

# A Unique Procedure to Identify Cell Surface Markers Through a Spherical Self-Organizing Map Applied to DNA Microarray Analysis

Yuh Sugii<sup>1,\*</sup>, Tomonari Kasai<sup>1,\*</sup>, Masashi Ikeda<sup>1</sup>, Arun Vaidyanath<sup>1</sup>, Kazuki Kumon<sup>1</sup>, Akifumi Mizutani<sup>1</sup>, Akimasa Seno<sup>1</sup>, Heizo Tokutaka<sup>2</sup>, Takayuki Kudoh<sup>1</sup> and Masaharu Seno<sup>1</sup>

<sup>1</sup>Laboratory of Nano-Biotechnology, Department of Medical Bioengineering Science, Graduate School of Natural Science and Biotechnology, Okayama University, Kita-ku, Okayama, Japan. <sup>2</sup>SOM Japan, Inc., Tottori, Japan. \*These authors contributed equally to this work.

**ABSTRACT:** To identify cell-specific markers, we designed a DNA microarray platform with oligonucleotide probes for human membrane-anchored proteins. Human glioma cell lines were analyzed using microarray and compared with normal and fetal brain tissues. For the microarray analysis, we employed a spherical self-organizing map, which is a clustering method suitable for the conversion of multidimensional data into two-dimensional data and displays the relationship on a spherical surface. Based on the gene expression profile, the cell surface characteristics were successfully mirrored onto the spherical surface, thereby distinguishing normal brain tissue from the disease model based on the strength of gene expression. The clustered glioma-specific genes were further analyzed by polymerase chain reaction procedure and immunocytochemical staining of glioma cells. Our platform and the following procedure were successfully demonstrated to categorize the genes coding for cell surface proteins that are specific to glioma cells. Our assessment demonstrates that a spherical self-organizing map is a valuable tool for distinguishing cell surface markers and can be employed in marker discovery studies for the treatment of cancer.

**KEYWORDS:** spherical Self Organizing Maps (sSOM), CD44, microarray, clustering, glioma

**CITATION:** Sugii et al. A Unique Procedure to Identify Cell Surface Markers Through a Spherical Self-Organizing Map Applied to DNA Microarray Analysis. *Biomarkers in Cancer* 2016;8:17–23 doi:10.4137/BIC.S33542.

**TYPE:** Original Research

**RECEIVED:** August 26, 2015. **RESUBMITTED:** January 13, 2015. **ACCEPTED FOR PUBLICATION:** January 15, 2015.

**ACADEMIC EDITOR:** Barbara Guinn

**PEER REVIEW:** Four peer reviewers contributed to the peer review report. Reviewers' reports totaled 1106 words, excluding any confidential comments to the academic editor.

**FUNDING:** This study was partly supported by MEXT/JSPS KAKENHI (grant numbers 26640079 and 90243493). The authors confirm that the funder had no influence over the study design, content of the article, or selection of this journal.

**COMPETING INTERESTS:** Authors disclose no potential conflicts of interest.

**COPYRIGHT:** © the authors, publisher and licensee Libertas Academica Limited. This is an open-access article distributed under the terms of the Creative Commons CC-BY-NC 3.0 License.

**CORRESPONDENCE:** mseno@okayama-u.ac.jp

Paper subject to independent expert single-blind peer review. All editorial decisions made by independent academic editor. Upon submission manuscript was subject to anti-plagiarism scanning. Prior to publication all authors have given signed confirmation of agreement to article publication and compliance with all applicable ethical and legal requirements, including the accuracy of author and contributor information, disclosure of competing interests and funding sources, compliance with ethical requirements relating to human and animal study participants, and compliance with any copyright requirements of third parties. This journal is a member of the Committee on Publication Ethics (COPE).

Published by Libertas Academica. Learn more about this journal.

## Introduction

Currently, the high-throughput screening technology is widely available in the field of life science, especially in relation to molecular diagnosis and drug discovery. The versatility of the microarray technology enables the simultaneous analysis of a large number of genes at any given time. Cluster analysis is usually performed on the results of DNA microarray experiments. However, the routine procedure of data mining dealing with huge number of signals obtained from microarray has not yet been optimized.

Various methods of hierarchical and nonhierarchical clustering have been employed in previous analyses. The most popular methods include nonhierarchical clustering such as *k*-means,<sup>1</sup> partitioning around medoids,<sup>2</sup> and the cluster affinity search technique.<sup>3</sup>

We have employed a spherical self-organizing map (sSOM), which is also a nonhierarchical clustering method, to cluster genes by the gene expression profiles of cells and tissues.<sup>4–9</sup> In this study, we attempted to identify human glioma-specific cell surface markers by analyzing nine glioma-derived cell lines and compared normal adult and fetal brain tissues. Because the information relating to marker proteins on cells is extremely useful in identifying and targeting cells specifically, a sophisticated and conventional procedure to identify cell-specific surface markers is highly desirable.

Our procedure proposed here is rather new and innovative in the analysis of data from gene clustering of the expression profiles obtained from the DNA microarray technique.

## Materials and Methods

**Cell lines and culturing.** We employed nine glioma cell lines for this study: A172, Gli36, U251MG, U373MG, GI-1, KG1C, T98G, CCFSTTG1, and TM31. A172, Gli36, U251MG, U373MG, GI-1, and KG1C cells were cultured in Dulbecco's Modified Eagle's Medium supplemented with 10% fetal bovine serum (FBS), containing 4 mM L-glutamine, 100 U/mL penicillin, and 100 µg/mL streptomycin. T98G and CCFSTTG1 cells were cultured in RPMI 1640 with 10% FBS, containing 2 mM L-glutamine, 100 U/mL penicillin, and 100 µg/mL streptomycin. TM31 cells were cultured in minimum essential medium with 10% FBS, 2 mM L-glutamine, 100 U/mL penicillin, and 100 µg/mL streptomycin. All cell lines were maintained at 37°C in a 5% CO<sub>2</sub>-humidified incubator.

**RNA preparation.** Total RNA was prepared from the cells using an RNeasy Mini Kit (Qiagen) according to the manufacturer's instructions. RNAs were essentially treated with DNase I to remove genomic DNA. To synthesize cDNA for DNA microarray analysis, 20 µg of total RNA was reverse-transcribed using SuperScript II (Invitrogen) with an oligo

dT<sub>18</sub> and dNTP-containing amino alkylated dUTP (0.4 mM, Ambion). Commercially obtained total RNA derived from normal adult and fetal brain (Stratagene) was compared as control throughout this study.

**Reverse transcription and quantitative polymerase chain reaction.** Using 2 µL of diluted cDNA (corresponding to 0.1 µg of original total RNA), real-time polymerase chain reaction (RT-PCR) was performed with the primers listed in Supplementary Table 1. The PCR profiles were 94°C for 5 minutes for initial denaturation followed by 95°C for 30 seconds, 55°C for 30 seconds, and 72°C for 30 seconds, followed by 72°C for 7 minutes final elongation. The cycling conditions were different and were carried out as follows: 25 cycles (for ID 287 and 1,286 and GAPDH), 28 cycles (for ID 2, 45 259, 314 339, 998, and 1,012), and 30 cycles (for the remaining candidates and epithelial growth factor receptor [EGFR]). For CD44s, caveolin-1, and GAPDH, quantitative RT-PCR (qRT-PCR) was performed using a LightCycler DX400 (Roche) with SYBR Green Realtime PCR Master Mix (Toyobo). The PCR profile was 40 cycles of 95°C for 10 seconds, 60°C for 10 seconds, and 72°C for 25 seconds.

**DNA microarray.** We originally designed the DNA microarray, which focused on cell membrane-bound proteins to identify cell surface markers specific to the cells.<sup>7-9</sup> It was designed to contain 1,795 oligonucleotide probes corresponding to human genes. To avoid the effect of alternative splicing, the coding sequence for the membrane-bound region or glycosylphosphatidylinositol (GPI) anchor-modified region was focused to design the oligonucleotide probes. The probes were conjugated on the slide glass coated with diamond-like carbon, as previously described.<sup>6,9</sup> The Cy3-labeled cDNA synthesized above was hybridized to the cell surface marker DNA microarray and then scanned with a FLA-8000 scanner (Fuji Film). Intensity for each spot of the array was captured by GenePix® Pro5.1 image analysis software (Axon Instrument).

**sSOM analysis.** For the initial screening of the genes, the obtained intensity of each spot from the microarray analysis of duplicates was evaluated by the following criteria:

$$|A - G| - V > 0,$$

where  $A$  denotes the gene expression level in normal brain tissue in adult or fetus,  $G$  denotes the average expression level of each gene from the nine glioma cell lines, and  $V$  denotes the standard deviation of each expressed gene among the nine glioma cell lines. The genes that were not expressed above zero were considered insignificant and filtered out. The values were then plotted on to the sSOM software “Blossom” obtained from SOM, Japan Co. Ltd.

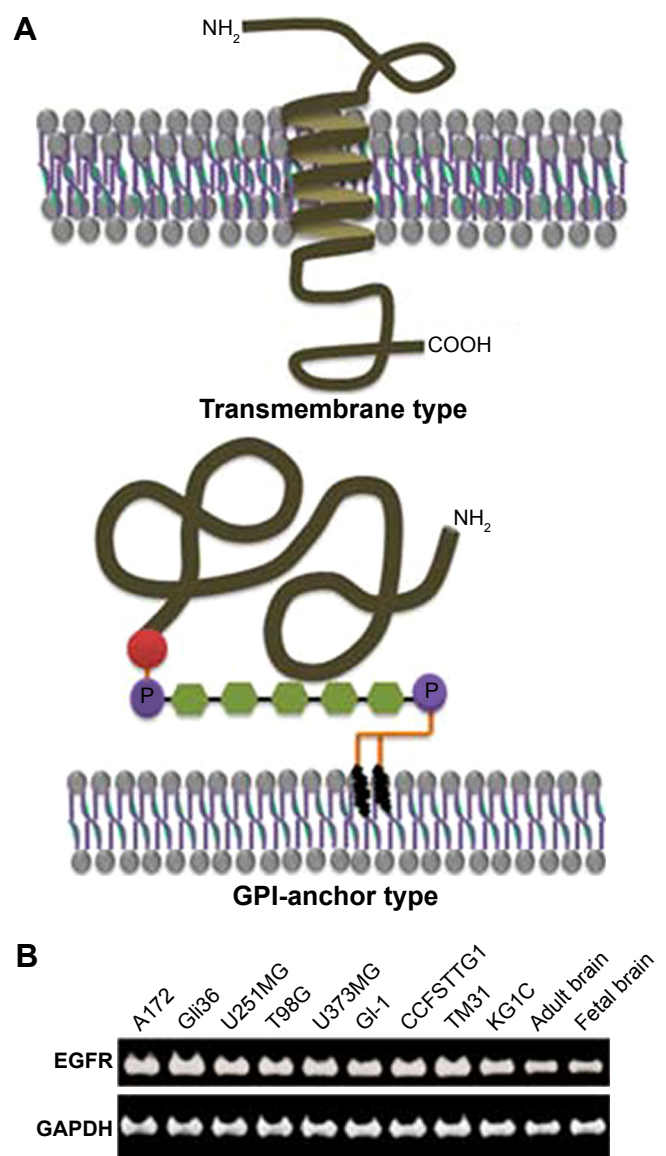
To find genes whose expression was significantly upregulated in glioma cell lines, we applied the following formula:

$$G - V > 0,$$

where  $G$  denotes the average of the difference between each expressed gene from the nine glioma (Gi) cell lines and gene expression level in adult or fetal brain ( $N$ );  $V$  denotes the standard deviation of  $(Gi - N)$ .

The SOM algorithm was previously described by Tokutaka et al<sup>10</sup> and Okita et al.<sup>11</sup>

**Immunostaining.** Glioma cells grown on 18 mm cover slips were washed with phosphate-buffered saline (PBS) twice, prior to fixation with 4% paraformaldehyde for 10 minutes. The fixed samples were incubated with blocking solution (PBS containing 10% FBS, 1% bovine serum albumin [BSA], and 0.02% NaN<sub>3</sub>), followed by incubation with anti-CD44 mouse



**Figure 1.** (A) Typical protein types integrated or anchored on cellular membrane. Transmembrane type has at least one region spanning the lipid bilayer. GPI-anchored type has a hydrophobic C-terminal tail (red) in the precursor form, and a processed C-terminal (brown) is attached to GPI and retained on the cell surface. (B) Expression of EGFR in the nine glioma cell lines and adult and fetal brain tissues. Evaluation was performed by reverse transcription PCR.

monoclonal antibody (Cell signaling Technology, diluted 1:100 in PBS containing 1% BSA) at 4°C overnight or with anti-caveolin 1 rabbit polyclonal antibody (Cell Signaling Technology, diluted 1:200) at room temperature for one hour. After incubation, the samples were washed with PBS three times and then incubated with Alexa-488 conjugated secondary antibody (Life Technologies) at a dilution of 1:300 for 30 minutes. After washing three times with PBS, the samples were mounted, and fluorescent images were captured using LSM 510 Meta (Zeiss).

## Results and Discussion

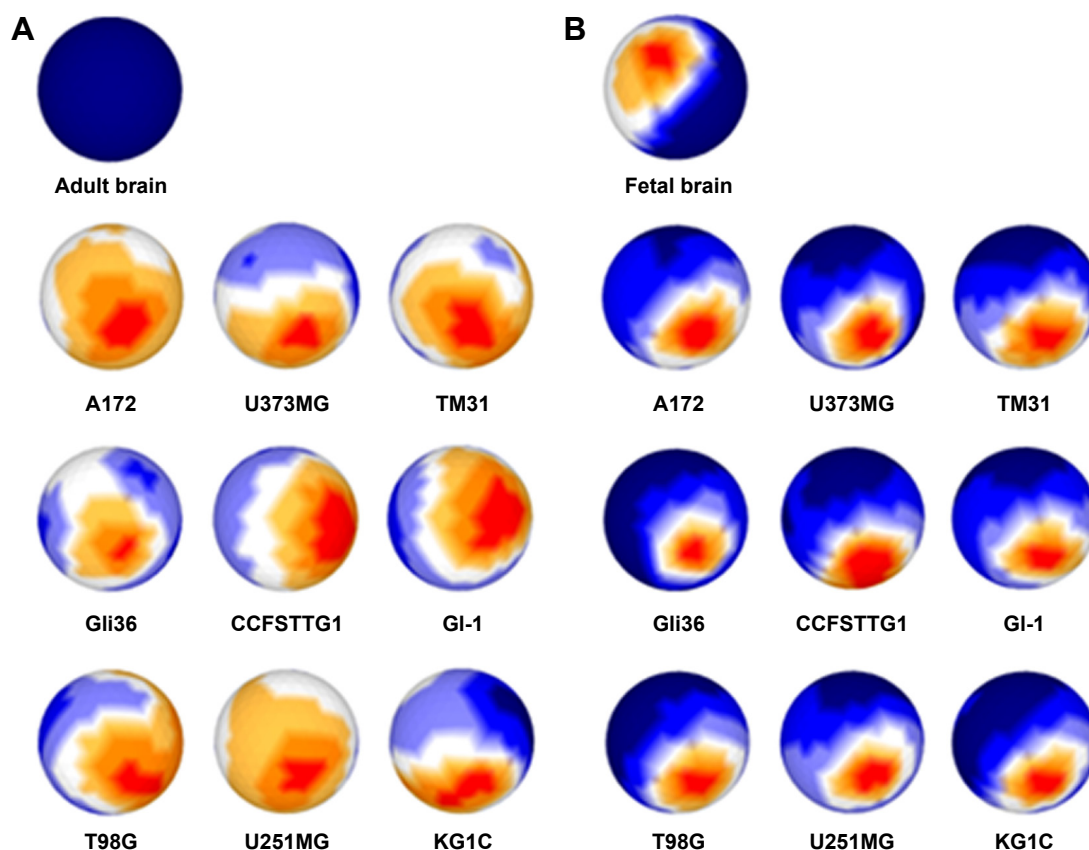
**Design of microarray for cell surface proteins.** We designed 1,797 oligonucleotide probes for human cDNA-coding transmembrane proteins and GPI-anchored proteins, which are located on the cell surface (Fig. 1A). Each probe was synthesized based on the nucleotide sequence coding for the transmembrane region or the region containing amino acid residues attached to GPI as a 60-mer modified with NH<sub>2</sub> at the 5'-end. The duplicated probes were covalently conjugated to the activated surface of diamond-like carbon-coated slide glass, as previously described.<sup>6,9</sup>

**Cell surface markers commonly expressed in gliomas.** We analyzed nine cell lines, namely, A172, Gli36, U251MG,

U373MG, GI-1, T98G, CCFSTTG1, TM31, and KG1C, which were derived from human glioma. It is well known that EGFR overexpression in tumor samples of low-grade glioma<sup>12</sup> and anaplastic astrocytoma<sup>13</sup> has been associated with poor prognosis. As shown in Figure 1B, EGFR was overexpressed in all cell lines evaluated in this study. However, EGFR is also clearly expressed in normal brain tissues, suggesting that EGFR is still not a good marker to distinguish glioma from normal cells. To screen for candidate markers specific and common to gliomas, total RNA from nine glioma cell lines and brains from adult and fetus was analyzed on our DNA microarray.

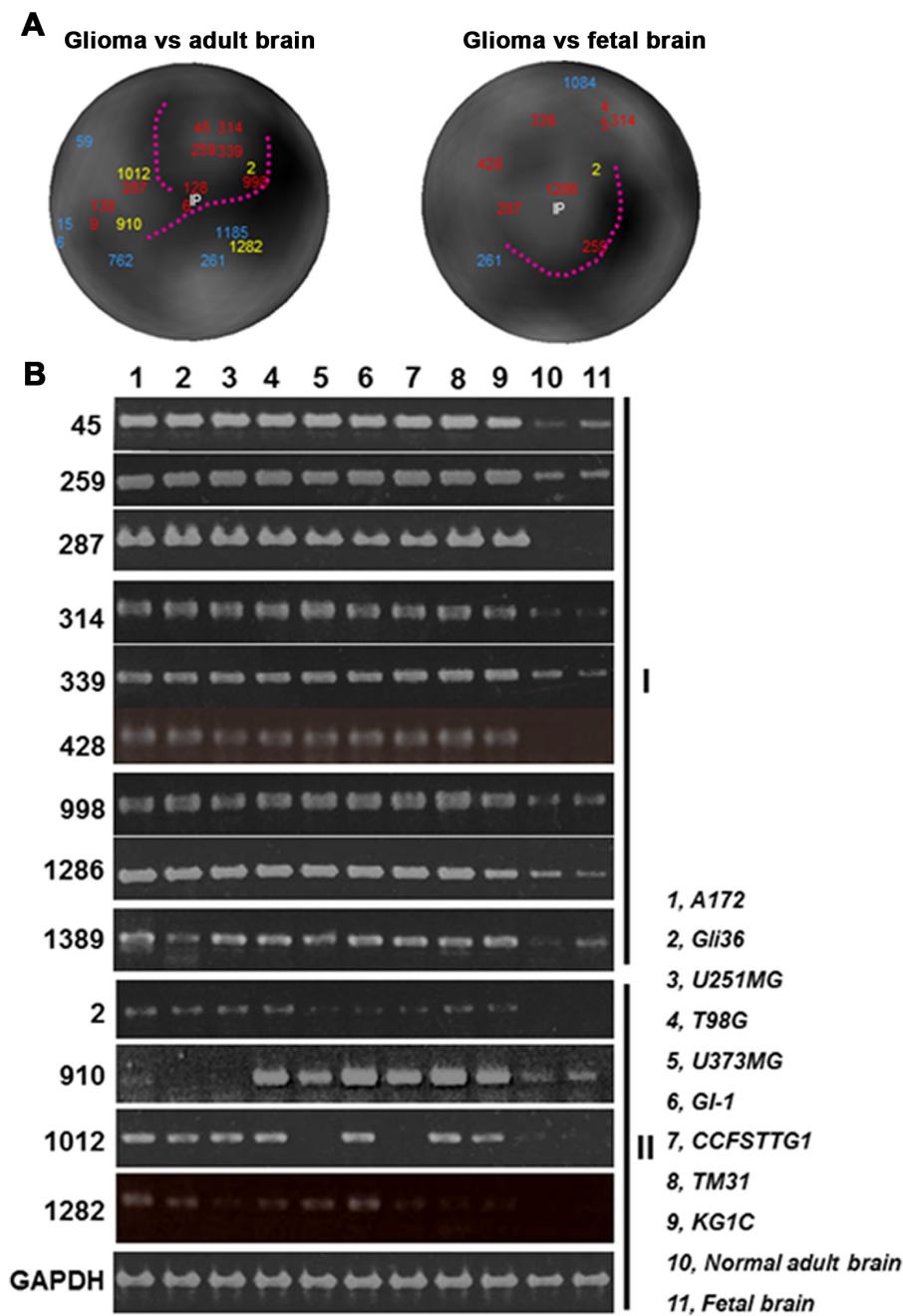
The genes were plotted in the two dimensions of  $V$  and  $|A - G|$  in Supplementary Figure 1. Because the genes, which had good differences in intensity between glioma and brain tissues and had very low  $V$  between gliomas, were considered helpful in characterizing glioma cells, the genes were selected for further sSOM analysis. As a result, 1,174 and 179 genes were selected for the analyses of normal adult brain and fetal brain tissues, respectively.

**Gene expression profiles on sphere surfaces.** The expression profiles were shown on each sphere surface for the selected genes (Fig. 2). The longitude and latitude were fixed in all sphere surfaces so that the profiles could be distinguished



**Figure 2.** Gene expression profiles of nine glioma cell lines and brain tissues presented on sphere surfaces. Profiles of intensity of each gene were plotted on the sphere surface with the longitude and latitude fixed at the same positions. Nine glioma cell lines vs normal adult brain (A) and vs fetal brain (B). Intensity of the spot is depicted in red, yellow, white, blue, and dark blue as very high, high, medium, low, and very low, respectively.





**Figure 3. (A)** Mining genes upregulated in gliomas by sSOM. Each number denotes the gene's identity. IP denotes the ideal point, where the expression in every glioma is maximum but zero expression in brain tissue. The points close to the IP could be nominated as the best candidates of the glioma marker. Dark areas (with broken lines) show the borders of each cluster of genes. Numbers in red, yellow, and blue represent close, good, and little relationship with IP, respectively, as the results of RT-PCR. **(B)** Evaluation of the expression of genes selected through sSOM procedure. Genes in groups I and II are the genes for which the numbers are shown in red and yellow, respectively. Evaluation was performed by reverse transcription PCR using agarose gel. The experiment was repeated three times and the same results were obtained.

at a glance. Gene expression profiles were compared as two sets between normal adult brain vs glioma, and fetal brain vs glioma. From the intensity of the gene expression plotted on the sSOM, it appears that the patterns of expression profiles were considerably different between the two comparisons. When compared with normal adult brain, the profiles of glioma appear very similar to one another while there was no significant gene expression visible in the normal adult brain on

the same side of the sphere. Fetal brain had the same expression profile on the same side. However, the pattern was different from the patterns of the glioma cell lines, which were again quite similar. When we compared the glioma cell panels alone, shown in Figure 2A and B, the heat map characteristics were entirely different between each other, based on the comparison with adult or fetal brain. The heat map characteristics shown in Figure 2 clearly emphasize that there is similarity in

the expression patterns within the glioma cell lines compared with those within adult or fetal brain. sSOM was able to show the glioma-specific characteristics irrespective of the different stages of the normal adult or fetal brain. Thus, some genes were specifically and commonly expressed in gliomas, as suggested by the red part of the profiles of glioma cell lines, which were localized in almost the same part of the sphere surfaces.

**Mining genes commonly expressed in glioma cell lines but not in brain tissues.** Although it was possible to select the genes of interest from the aforementioned procedure, we further considered the extraction of the genes to be focused by overlaying the profiles in one sSOM (Fig. 3A).

As the ideal point (IP), the virtual gene that was expressed in all glioma cell lines at the highest level, but not expressed in brain tissues, were inserted in the dataset for reference. Based on these calculations, we generated the gene expression profiles against the adult brain and fetal brain separately compared with glioma. In Figure 3A, both of the gene expression profiles were shown on the same side of the sphere surface with IP at the center. The genes located close to IP are interpreted as the genes expressed in all glioma cell lines but not in brain tissues. The dark part of the sphere surface translates to the distances apart from each other so that the dotted lines were able to clearly show the border of clusters. The genes evident in Figure 3A are listed in Table 1.

**Evaluation of genes commonly expressed in glioma cell lines.** Nineteen genes are shown in Figure 3A. The expression of these genes was evaluated by reverse transcription PCR (Fig. 3B), and CD44 and caveolin-1 were investigated by qRT-PCR (Supplementary Fig. 2). In Figure 3B, 13 genes showed a good relationship with glioma-specific expression. Genes expressed in all glioma cell lines were denoted as group I. Genes in group II were not expressed in few of the glioma cell lines. The genes in group I were shown in red, and those in group II were shown in yellow (Fig. 3A). The remaining six genes shown in blue could not be confirmed as being positively expressed in glioma. Based on these observations, the genes located close to IP were depicted in red, whereas the genes depicted in blue were located distant from IP (Fig. 3A). This suggests that sSOM clustering almost correlated with the results of gene expression results confirmed by PCR. In Figure 3A the 13 genes depicted in red and yellow has been tabulated in Table 1. Not only are there well-known genes but genes, whose function is not yet clear, are also listed. Because hyaluronic acid is abundant in the brain tissue, CD44 (hyaluronic acid receptor) might be a good marker of glioma among the listed genes. CD44 is known to have various forms resulting from alternative splicing<sup>14,15</sup> so that the variant form of CD44 in glioma cell lines was assessed by reverse transcription PCR (Supplementary Fig. 3). As a result, the standard CD44 (CD44s) form was found to be dominantly expressed in the cell lines. Moreover, CD44 directly/indirectly contributes to antioxidant status, drug resistance, and migration in cancer

**Table 1.** List of genes localized close to the IP in sSOM.

GENE ID	GENE NAME
2	1-acylglycerol-3-phosphate O-acyltransferase 2 (AGPAT2)
45	Adenosine A2b receptor (ADORA2B)
259	Caveolin-1, caveolae protein, 22kD (CAV1)
287	CD44 antigen (homing function and Indian blood group system)
314	CGI-31 protein (TXNDC14)
339	Chemokine-like factor super family member 6 (CMTM6)
428	Cornichon-like (CNIH)
910	Leptin receptor overlapping transcript-like 1 (LEPROTL1) membrane component,
998	Chromosome 11, surface marker 1 (M11S1)
1012	Met proto-oncogene (MET)
1282	Protein tyrosine phosphatase, receptor type, S (PTPRS)
1286	Proteolipid protein 2 (colonic epithelium-enriched) (PLP2)
1389	Reversion-inducing-cysteine-rich protein with kazal motifs (RECK)

cells.<sup>16,17</sup> The high expression levels of CD44 in glioma correlate with malignancy and prognosis<sup>18,19</sup> because CD44 is not only associated with astrocytes but also with cancer stem cells.<sup>20,21</sup>

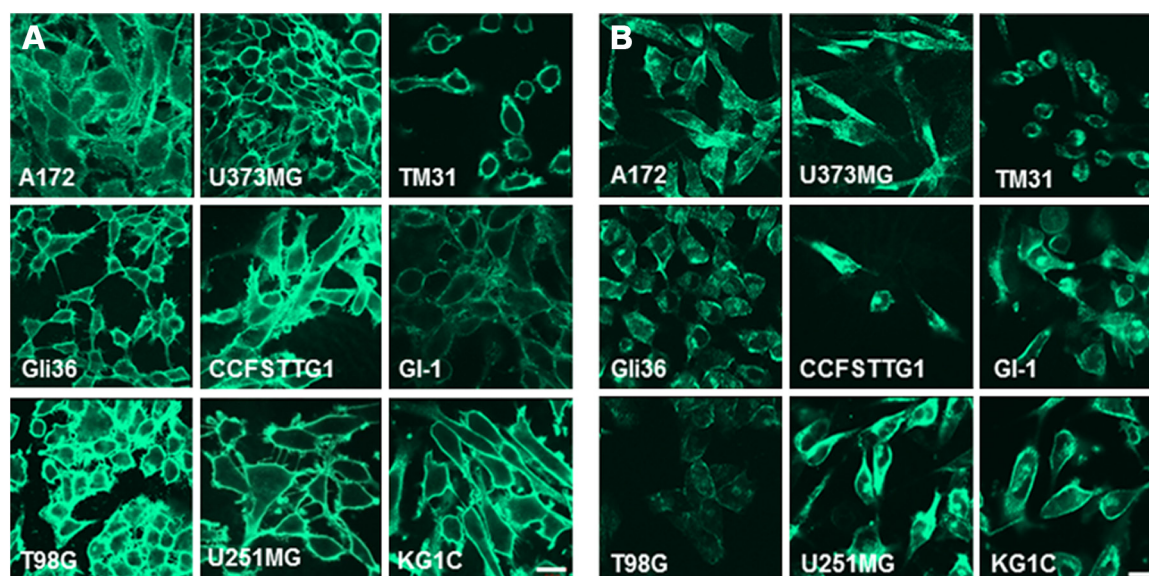
Translation of the gene of interest is considered the most crucial point in tumor marker discovery. The gene should transcribe and eventually be translated into protein because protein expression is an absolute requirement for the invasion, migration, and various signaling aspects of cancer cells. For the confirmation of protein expression in the cells, CD44 and caveolin-1 in the genes of group I were the best candidates, which cross-reacted with antibodies that could easily detect proteins; these two proteins were evaluated by immunostaining (Fig. 4A and B). Both antibodies against CD44 and caveolin-1 showed clear staining in all nine glioma cell lines. Because this staining was not observed by the secondary antibody, there was no nonspecific binding by the secondary antibody. We concluded that the proteins were present on the cellular membrane because of the observation of staining on cell connections.

## Conclusion

sSOM coupled with DNA microarray analysis has been successfully demonstrated to show gene expression profiles. Through this procedure, the identification of specific genes is possible for the nomination of cell surface markers, such as CD44 that are specific to glioma.

## Acknowledgments

The authors appreciate the excellent assistance of Ms. Mami Asakura throughout the entire study.



**Figure 4.** (A) Immunostaining of glioma cells with anti-CD44 antibody. Nine glioma cell lines were stained with anti-CD44 antibody followed by the secondary antibody labeled with fluorescein isothiocyanate (FITC). The secondary antibody did not show any background staining. The observation was performed by confocal microscopy at a magnification of  $\times 64$ . (B) Immunostaining of glioma cells with anti-caveolin-1 antibody. Nine glioma cell lines were stained with anti-caveolin-1 antibody followed by the secondary antibody labeled with FITC. The secondary antibody did not show any background staining. The observation was performed by confocal microscopy at a magnification of  $\times 64$ . The experiment was repeated three times and the same results were obtained.

### Author Contributions

Conceived and designed the experiments: YS, TKasai, and MS. Analyzed the data YS, MI, AV, KK, AS, and HT. Wrote the first draft of the manuscript: YS and MS. Contributed to the writing of the manuscript: YS, TKasai, AV, and MS. Agreed with the manuscript results and conclusions: YS, HT, and MS. Jointly developed the structure and arguments for the paper: AM and TKudoh. Made critical revisions and approved the final version of the manuscript: TKasai, AV, TKudoh, and MS. All the authors have reviewed and approved the final manuscript.

### Supplementary Materials

**Supplementary table 1.** Primer sets for RT-PCR and quantitative PCR.

**Supplementary figure 1.** Extraction of focused genes with feature. Each gene was plotted by nine glioma cell lines vs normal adult brain (A) and vs fetal brain (B) according to  $|A - G|$  in horizontal axis and  $V$  in vertical axis. The border is lined by  $V = |A - G|$ . The area around where  $|A - G| - V > 0$  is circled with red.

**Supplementary figure 2.** Gene expression levels of CD44 (A) and caveolin-1 (B). The relative expression levels of each cell line were confirmed by quantitative PCR. The graph shows the average levels of cell lines compared to adult brain.

**Supplementary figure 3.** Evaluation of the variable forms of CD44 in glioma cell lines. CD44 is known to be variable due to the alternative splicing. Primers were designed to amplify the variable region. RT-PCR was performed and the

fragment of 500 bp, which corresponds to the shortest form, was only amplified in each glioma cell line. M; size marker.

### REFERENCES

- MacQueen J. Some methods for classification and analysis of multivariate observations. In *Proceedings of the fifth Berkeley symposium on mathematical statistics and probability*. 1967;1(14):281–297.
- Kaufman L, Rousseeuw PJ. *Finding Groups in Data: An Introduction to Cluster Analysis*. New York: John Wiley & Sons; 1990.
- Ben-Dor A, Shamir R, Yakhini Z. Clustering gene expression patterns. *J Comput Biol*. 1999;6(3–4):281–297.
- Ritter H. Self-organizing maps in non-euclidean spaces. In: Oja E, Kaski S, eds. *Kohonen Maps*. Amsterdam: Elsevier; 1999:97–109.
- Kihato PK, Tokutaka H, Ohkita M, et al. Spherical and torus SOM approaches to metabolic syndrome evaluation. In *Neural Information Processing*. Springer Berlin Heidelberg; 2007:274–284.
- Tuoya, Hirayama K, Nagaoka T, et al. Identification of cell surface marker candidates on SV-T2 cells using DNA microarray on DLC-coated glass. *Biochem Biophys Res Commun*. 2005;334(1):263–268.
- Tuoya, Sugii Y, Satoh H, et al. Spherical self-organizing map as a helpful tool to identify category-specific cell surface markers. *Biochem Biophys Res Commun*. 2008;376(2):414–418.
- Abou-Sharieha S, Sugii Y, Tuoya, et al. Identification of TM9SF2 as a candidate of the cell surface marker common to breast carcinoma cells. *Chinese J Clin Onc*. 2009;6(1):1–9.
- Sugii Y, Kudoh T, Otani T, Ikeda M, Tokutaka H, Seno M. In: Mwasiagi JI, ed. *Clustering Genes, Tissues, Cells and Bioactive Chemicals by Sphere SOM. Self Organizing Maps-applications and novel algorithm design*. InTech; 2011:371–386.
- Tokutaka H, Yoshihara K, Fujimura K, Iwamoto K, Obu-Cann K. Application of self-organizing maps (SOM) to auger electron spectroscopy (AES). *Surf Interface Anal*. 1999;27(8):783–788.
- Okita M, Tokutaka H, Yoshihara K, Oyabu M. Comparison of spectrum cluster analysis with PCA and spherical SOM and related issues not amenable to PCA. In: *Advances in Self-Organizing Maps and Learning Vector Quantization. Volume 295 of the series Advances in Intelligent Systems and Computing*. 2004:239–248.
- Andersson U, Guo D, Malmer B, et al. Epidermal growth factor receptor family (EGFR, ErbB2–4) in gliomas and meningiomas. *Acta Neuropathol*. 2004;108(2):135–142.



13. Wrensch M, Wiencke JK, Wiemels J, et al. Serum IgE, tumor epidermal growth factor receptor expression, and inherited polymorphisms associated with glioma survival. *Cancer Res.* 2006;66(8):4531–4541.
14. Kaaijk P, Troost D, Morsink F, et al. Expression of CD44 splice variants in human primary brain tumors. *J Neurooncol.* 1995;26(3):185–190.
15. Eibl RH, Pietsch T, Moll J, et al. Expression of variant CD44 epitopes in human astrocytic brain tumors. *J Neurooncol.* 1995;26(3):165–170.
16. Tamada M, Nagano O, Tateyama S, et al. Modulation of glucose metabolism by CD44 contributes to antioxidant status and drug resistance in cancer cells. *Cancer Res.* 2012;72(6):1438–1448.
17. Chetty C, Vanamala SK, Gondi CS, Dinh DH, Gujrati M, Rao JS. MMP-9 induces CD44 cleavage and CD44 mediated cell migration in glioblastoma xenograft cells. *Cell Signal.* 2012;24(2):549–559.
18. Yoshida T, Matsuda Y, Naito Z, Ishiwata T. CD44 in human glioma correlates with histopathological grade and cell migration. *Pathol Int.* 2012;62(7):463–470.
19. Wei KC, Huang CY, Chen PY, et al. Evaluation of the prognostic value of CD44 in glioblastoma multiforme. *Anticancer Res.* 2010;30(1):253–259.
20. Pietras A, Katz AM, Ekström EJ, et al. Osteopontin-CD44 signaling in the glioma perivascular niche enhances cancer stem cell phenotypes and promotes aggressive tumor growth. *Cell Stem Cell.* 2014;14(3):357–369.
21. Sugihara E, Saya H. Complexity of cancer stem cells. *Int J Cancer.* 2012;132(6):1249–1259.