

# Interactions of Cannabinoids With Biochemical Substrates

Brian F Thomas

Analytical Chemistry and Pharmaceuticals, RTI International, Research Triangle Park, NC, USA.

Substance Abuse: Research and Treatment  
Volume 11: 1–9  
© The Author(s) 2017  
Reprints and permissions:  
sagepub.co.uk/journalsPermissions.nav  
DOI: 10.1177/1178221817711418



**ABSTRACT:** Recent decades have seen much progress in the identification and characterization of cannabinoid receptors and the elucidation of the mechanisms by which derivatives of the *Cannabis sativa* plant bind to receptors and produce their physiological and psychological effects. The information generated in this process has enabled better understanding of the fundamental physiological and psychological processes controlled by the central and peripheral nervous systems and has fostered the development of natural and synthetic cannabinoids as therapeutic agents. A negative aspect of this decades-long effort is the proliferation of clandestinely synthesized analogs as recreational street drugs with dangerous effects. Currently, the interactions of cannabinoids with their biochemical substrates are extensively but inadequately understood, and the clinical application of derived and synthetic receptor ligands remains quite limited. The wide anatomical distribution and functional complexity of the cannabinoid system continue to indicate potential for both therapeutic and side effects, which offers challenges and opportunities for medicinal chemists involved in drug discovery and development.

**KEYWORDS:** Cannabinoids, endocannabinoids, cannabinoid receptor subtypes, synthetic cannabinoids, cannabinoid ligands,  $\Delta^9$ -THC

**RECEIVED:** January 6, 2017. **ACCEPTED:** February 13, 2017.

**PEER REVIEW:** Four peer reviewers contributed to the peer review report. Reviewers' reports totaled 699 words, excluding any confidential comments to the academic editor.

**TYPE:** Scientific Review

**FUNDING:** The author(s) disclosed receipt of the following financial support for the research, authorship, and/or publication of this article: This work was supported in part by the National Institute on Drug Abuse DA-040460.

**DECLARATION OF CONFLICTING INTERESTS:** The author(s) declared no potential conflicts of interest with respect to the research, authorship, and/or publication of this article.

**CORRESPONDING AUTHOR:** Brian F Thomas, Analytical Chemistry and Pharmaceuticals, RTI International, Room 187, William F. Little Medicinal Chemistry Building, 3040 East Cornwallis Road, Research Triangle Park, NC 27709-2194, USA. Email: bft@rti.org

## Introduction

*Cannabis sativa* is one of society's oldest cultivated plants, with records of its propagation and use dating back thousands of years. Due to widespread consumption for medicinal and recreational purposes, the manner in which the chemical constituents in cannabis produce their pharmacological effects has been the subject of considerable interest and investigation. Initially, the production of crude but concentrated forms, such as hashish and tinctures, showed that the pharmacologically active chemical constituents could be isolated and studied. As a result, the molecular structures of the unique compounds in cannabis (the phytocannabinoids) and their associated pharmacological activities were further defined. These efforts culminated in the structural elucidation of the principal psychoactive constituent,  $\Delta^9$ -THC (Figure 1), and facilitated the discovery of extremely potent synthetic cannabinimimetic compounds, identification of their specific receptors and mechanisms of action, and further elucidation of the underlying biochemical systems through which cannabinoids exert their pharmacological actions. This article is an overview of the current understanding of the biomolecular basis for the pharmacological effects of cannabis and  $\Delta^9$ -THC-like cannabinimimetics in humans. Emphasis is on (1) the types of cannabinoid receptors and their anatomical distribution; (2) the endogenous lipid signaling molecules that interact with these receptors (the endocannabinoids); (3) the enzymes and cellular processes involved in the synthesis, liberation, and degradation of the primary endocannabinoids *N*-arachidonylethanolamine (anandamide) and 2-arachidonylethanolglycerol; and (4) the role of the endocannabinoid

system in the modulation of cellular signaling processes and neuronal excitability in areas of the brain effecting central nervous system function and behavior.

## Cannabinoid Receptors

Although interest in the pharmacology of cannabis dates back several millennia, unequivocal evidence supporting the existence of specific cannabinoid receptors in the central nervous system (CNS) of animals began to accumulate only recently. In the 1980s, extremely potent synthetic compounds (Figure 2) with cannabinimimetic activity in laboratory animals were shown to have rigorous structure-activity relationships, including stereoselectivity.<sup>1–4</sup> Further indication of the interaction of cannabinoids with specific receptor proteins was revealed through their ability to dose-dependently inhibit adenylate cyclase in a pertussis toxin-sensitive fashion that correlated with their pharmacological potency in laboratory animals.<sup>5–7</sup> Radiolabeling of the potent synthetic cannabinoid CP-55,940 provided proof of a saturable, high-affinity stereoselective biomolecular site in rat brain whose binding affinity for cannabinoids correlated to both the inhibition of adenylate cyclase in vitro and analgesic activity in vivo.<sup>8</sup> Autoradiography studies subsequently revealed the anatomical distribution of these high-affinity binding sites in the CNS<sup>9–13</sup> and peripheral tissues.<sup>14</sup> The pattern and density of distribution of the binding sites for cannabinoids in the brains of rats, dogs, monkeys, and humans were exceptional, with extremely high concentrations in the basal ganglia, hippocampus, cerebral cortex, and cerebellum (Figure 3). The widespread distribution of binding sites in

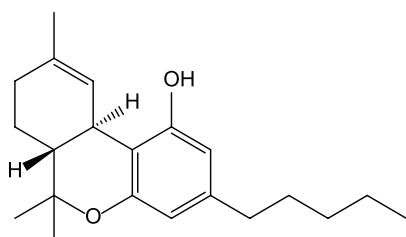


the CNS correlates with the diverse effects of cannabinoids observed in laboratory animals and humans, including alterations in movement (eg, locomotor activity, coordination, and catalepsy), feeding and satiety (“the munchies”), learning, memory, and affective states. The unique pattern of distribution facilitated the cloning, sequencing, and identification of a 7-transmembrane-spanning G protein-coupled cannabinoid receptor (GPCR) in the brain (CB<sub>1</sub>) that was shown to be responsible for many of the diverse pharmacological actions of cannabinoids.<sup>15–17</sup> A second receptor (CB<sub>2</sub>) was subsequently cloned and sequenced and found to be expressed in macrophages in the marginal zone of spleen and in other cells with immunological function.<sup>18</sup> While other receptors are substrates for certain cannabinoids, CB<sub>1</sub> and CB<sub>2</sub> are most closely associated with the pharmacological actions of  $\Delta^9$ -THC and other psychoactive cannabinoids in humans.

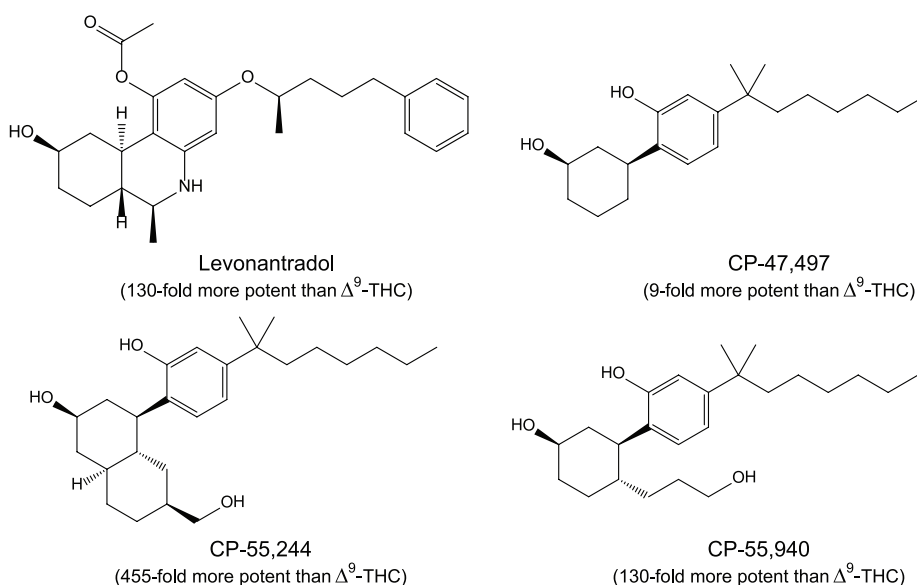
The CB<sub>1</sub> and CB<sub>2</sub> subtypes couple preferentially to G proteins of the G<sub>i</sub> and G<sub>o</sub> classes.<sup>7,19–21</sup> The GPCR signal transduction pathway serves to amplify intracellular processes in response to the formation of the ligand-bound receptor complex. On binding of a cannabinoid ligand, the conformational equilibrium of the GPCR is altered. A cannabinoid agonist alters the receptor conformations into those that activate the

trimeric G protein, causing G <sub>$\alpha$</sub>  to bind a molecule of guanine triphosphate (GTP) and dissociate from the other two G protein subunits. The activated G protein subunits disengage from the receptor and modulate signal amplification pathways involving several downstream effector proteins, including inhibition of specific adenylate cyclases and voltage-dependent calcium channels, and activation of inwardly rectifying potassium channels and several mitogen-activated protein kinases (with some variation depending on cell type, levels of receptor expression, and endogenous tone or constitutive activity; see Figure 4). Cannabinoid ligands can vary in their intrinsic activity or efficacy in producing conformational changes that result in a subsequent receptor-mediated response, with full agonists producing a maximal cellular response, partial agonists an intermediate response, antagonists no response (but reducing or blocking the effect of another ligand), and inverse agonists decreasing the constitutive activity of the receptor signaling complex, that is, driving the basal level of responsiveness negative, which is opposite to the effect of agonists. For example,  $\Delta^9$ -THC is a partial agonist with respect to its ability to stimulate GTP binding through the CB<sub>1</sub> receptor compared with CP-55,940, which is a full agonist.<sup>22–24</sup> This may help explain why smoking “Spice” and other synthetic cannabinoid-containing herbal formulations causes more severe panic attacks and other adverse effects than smoking cannabis.

The discovery of the CB<sub>1</sub>-selective receptor inverse agonist SR141716A (rimonabant) (Figure 5)<sup>26,27</sup> permitted the effects of  $\Delta^9$ -THC and opposing endogenous cannabinoid function to be further illuminated. For example, this compound was shown to produce physical withdrawal signs in rats made tolerant to the effects of  $\Delta^9$ -THC.<sup>28</sup> Many of the central effects produced by  $\Delta^9$ -THC, such as increased food consumption and impaired learning and memory, were attenuated by SR141716A,<sup>29,30</sup> providing further evidence of mediation through CB<sub>1</sub>.

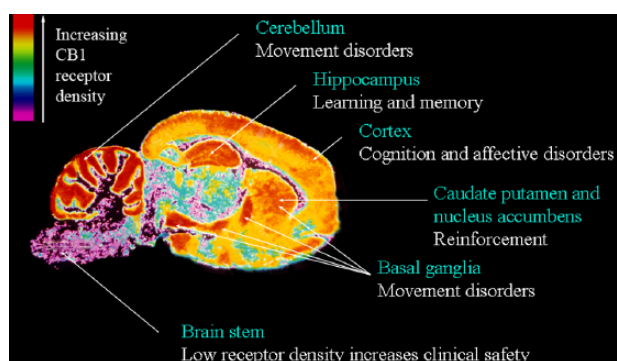


**Figure 1.**  $\Delta^9$ -THC, the principal psychoactive constituent in *Cannabis sativa*.



**Figure 2.** Four potent synthetic cannabinoids.

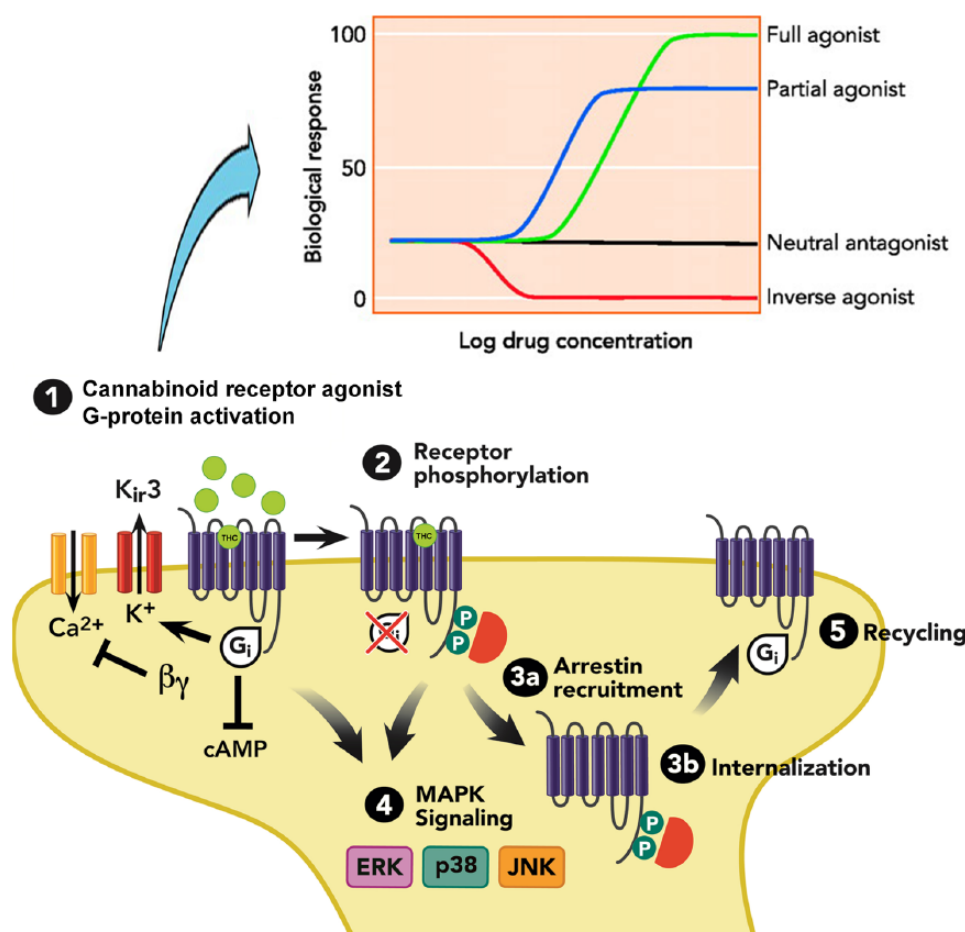
Furthermore, treatment with SR141716A alone enhanced spatial memory,<sup>31</sup> decreased food consumption,<sup>32</sup> and produced other pharmacological effects indicative of its ability to act as an inverse agonist or reverse existing endocannabinoid tone at the CB<sub>1</sub> receptor. SR141716A also blocked the discriminative stimulus effects of  $\Delta^9$ -THC in rodents and reduced the reinforcing effects and reinstatement of palatable food<sup>33–35</sup> and other drugs of abuse in animal self-administration models,



**Figure 3.** Radioligand autoradiograph of specific binding of [<sup>3</sup>H] CP-55,940 to a sagittal section of rat brain, showing high CB<sub>1</sub> receptor densities in the hippocampus, basal ganglia, and cerebellum.

including heroin,<sup>36</sup> cocaine,<sup>37</sup> nicotine,<sup>34,38,39</sup> and ethanol.<sup>33,40</sup> The CB<sub>2</sub>-selective inverse agonist SR144528 (Figure 5) was identified by the same research group at Sanofi<sup>41</sup> and shown to be a useful probe for cannabinoid-mediated effects in immune function.<sup>42</sup>

Cannabinoid receptors also contain allosteric sites that bind small molecules that alter receptor structure and function—that is, allosteric modulators. Allosteric sites are topographically distinct from those bound by orthosteric agonists (eg,  $\Delta^9$ -THC and CP-55,940) and antagonists (eg, SR141716A and SR144528). When allosteric modulators bind to the allosteric site, they alter the conformational equilibrium of the receptor, which affects the ability of the receptor to bind compounds at the orthosteric site and couple to signal transduction molecules. Thus, allosteric modulators may either positively or negatively modulate the affinity or efficacy of orthosteric agonists and antagonists. Both positive and negative allosteric modulators (Figure 6) of cannabinoid receptors produce pharmacological effects distinct from those produced by orthosteric ligands.<sup>43–51</sup> Theoretically, allosteric modulators possess no basal activity in the absence of orthosteric ligands. Because of this, allosteric modulators might provide more selective spatial and temporal signaling,<sup>52</sup> exerting their effects only in the



**Figure 4.** Cannabinoid receptor signaling and trafficking. Modified and reproduced with permission from Al-Hasani and Bruchas.<sup>25</sup>

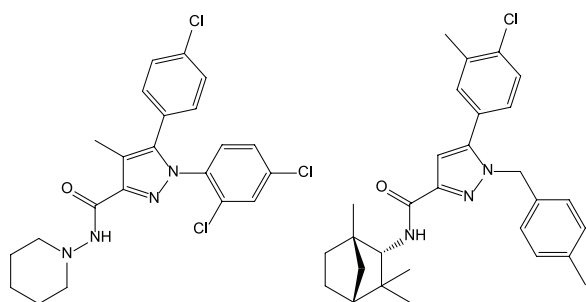
presence of orthosteric ligands such as endocannabinoids, which are transiently released on demand and removed from their sites of action by enzymatic hydrolysis or cellular uptake. Thus, this fine-tuning of endogenous ligand signaling through orthosteric binding sites, instead of directly activating or blocking the receptor, may provide a promising alternative strategy for treating cannabinoid receptor-mediated disorders. However, as some compounds might bind to the allosteric site and act alone to alter the receptor's inherent coupling to signaling molecules (constitutive activity and signaling bias), it is also possible for compounds to act as allosteric agonists and allosteric inverse agonists, exerting their effects in the absence of an orthosteric ligand.<sup>53,54</sup> Interestingly, there are phytocannabinoids in cannabis,<sup>47</sup> as well as endogenous chemical constituents found in humans,<sup>49,55,56</sup> that have been reported to produce allosteric modulation of cannabinoid receptor function.

### Endogenous Cannabinoid Signaling Molecules (Endocannabinoids)

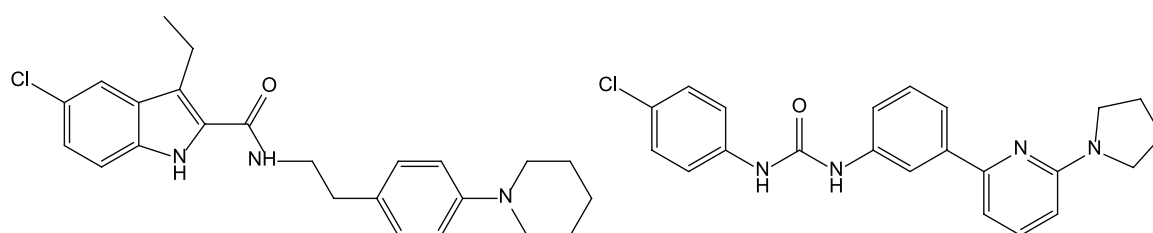
The sequencing and cloning of the cannabinoid receptors and the availability of high-affinity radiolabeled ligands facilitated the screening and identification of endocannabinoids that act as cannabinoid receptor modulators. The first endocannabinoid, anandamide (Figure 7), was isolated and identified in the porcine brain.<sup>57,58</sup> It was shown to have an affinity ( $K_i$ ) of approximately 50 nM for the CB<sub>1</sub> receptor<sup>57</sup> and a much lower affinity of 1600 nM for CB<sub>2</sub>.<sup>19</sup> Another endocannabinoid lipid, 2-arachidonoylglycerol (2-AG), was isolated and identified in canine gut and shown to bind to both CB<sub>1</sub> and CB<sub>2</sub> with  $K_i$  values of approximately 500 and 1400 nM, respectively.<sup>59</sup> Like  $\Delta^9$ -THC,

both compounds inhibit adenylate cyclase in isolated mouse spleen cells and electrically evoked contractions of the mouse vas deferens and produce the typical tetrad of pharmacological effects after intravenous administration in mice: antinociception, immobility, reduction in spontaneous activity, and reduction in rectal temperature.<sup>57,59–61</sup> 2-Arachidonoylglycerol is generally considered to be an orthosteric full agonist and anandamide an orthosteric partial agonist at both cannabinoid receptor subtypes in most tissues and signal transduction assays.<sup>62,63</sup> Many other endogenous and synthetic lipids have since been shown to interact with cannabinoid receptors.

Anandamide is derived from the precursor *N*-arachidonoyl phosphatidylethanolamine, which is synthesized by the relatively nonselective enzyme *N*-acyltransferase.<sup>64,65</sup> In the brain, anandamide and other *N*-acylethanolamines are released “on demand” in an activity-dependent manner by enzymatic cleavage of lipid precursors by phospholipase D<sup>66</sup> and other distinct biochemical pathways.<sup>67–69</sup> When released from the membrane, these lipids are typically bound reversibly to carrier or transport proteins called fatty acid-binding proteins.<sup>70</sup> *N*-acylethanolamines distributed in this way can act as diverse cellular signaling molecules in neural and nonneural tissues. Anandamide and other fatty acid amides are primarily degraded through the actions of fatty acid amide hydrolases (FAAHs).<sup>71–73</sup> Inhibitors of FAAH activity lead to increased levels of anandamide and other fatty acid amides and prostamides in tissues and biological fluids. Anandamide is also a substrate for metabolism through cyclooxygenase 2 (COX-2), resulting in the production of bioactive prostamides. Inhibition of FAAH and/or COX-2 increases endocannabinoid tone and is recognized as having therapeutic potential distinct from that available with exogenous receptor agonists of cannabinoid receptors.<sup>74</sup> FAAH (–/–) knockout mice have elevated levels of anandamide in the brain and demonstrate analgesia that is reversed by the CB<sub>1</sub> antagonist SR141716A.<sup>75</sup> Moreover, several FAAH inhibitors have analgesic and anti-inflammatory activity in animal models<sup>76,77</sup> and have been tested in clinical trials for a variety of therapeutic end points.<sup>78,79</sup> However, there is heightened awareness of the risks for significant adverse events with this relatively indirect approach to cannabinoid therapeutics after a fatality, and severe neurologic disorders were encountered in clinical trials of the FAAH inhibitor BIA 10-2474.<sup>80</sup> Although this compound is suspected to have a prolonged and broad

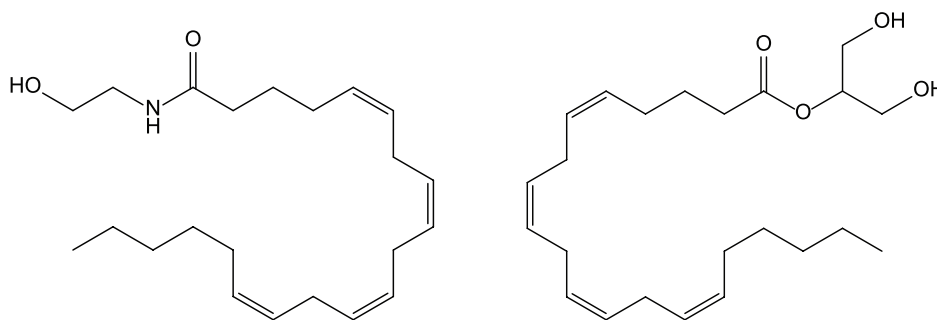


**Figure 5.** The CB<sub>1</sub>- and the CB<sub>2</sub>-selective inverse agonists SR141716A (left) and SR144528 (right).



**Figure 6.** CB<sub>1</sub> allosteric modulators. Org 27569 (left) and PSNCBAM-1 (right) display positive binding cooperativity with the orthosteric agonist CP-55,940 for CB<sub>1</sub> receptor binding as would positive allosteric modulators, but reduce the efficacy of orthosteric agonists in several in vitro functional assays.





**Figure 7.** The endocannabinoids arachidonylethanolamine (anandamide, left) and 2-arachidonoylglycerol (2-AG, right).

spectrum of activity at hydrolases compared with more selective FAAH inhibitors (such as PF-3845 by Pfizer and JNJ-42165279 by Janssen),<sup>81</sup> the underlying biochemical mechanisms involved in the toxic cerebral syndrome remain largely unknown.<sup>82</sup>

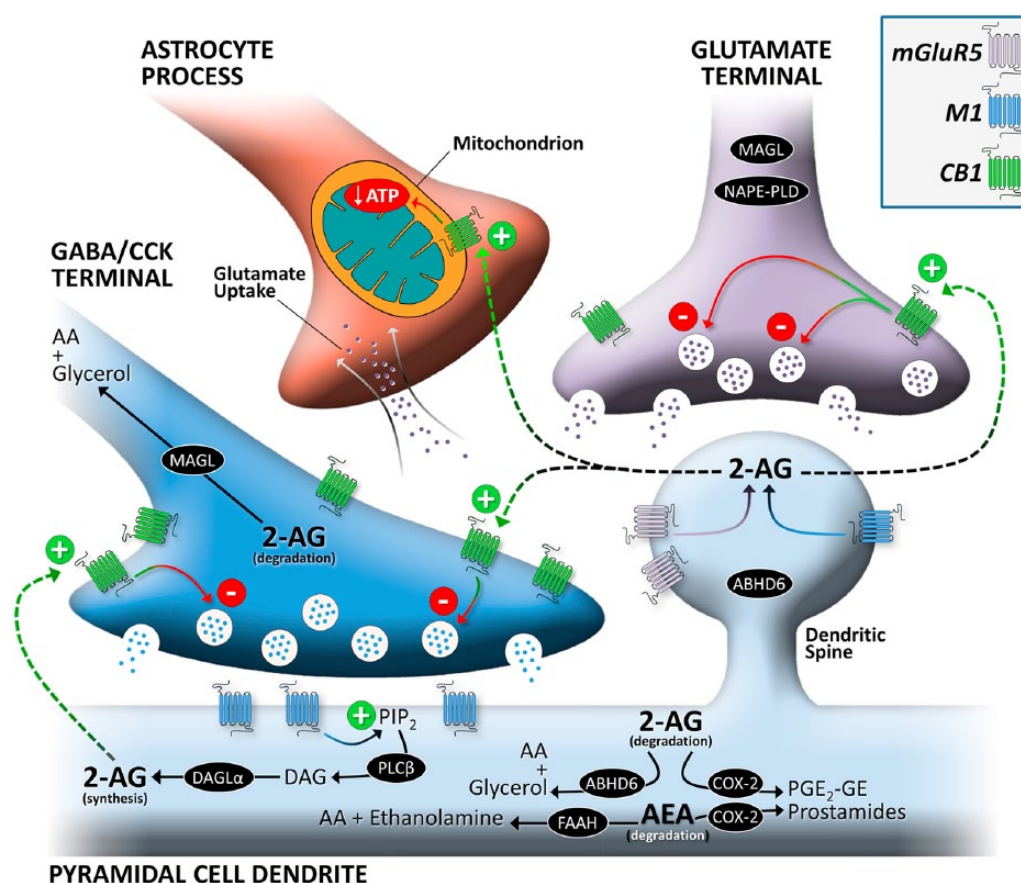
2-Arachidonoylglycerol is also an integral signaling component of lipid membranes but is produced, liberated, and degraded in a manner different from that of anandamide. In neuronal tissues, the synthesis of 2-AG begins with the precursor phosphatidylinositol 4,5-bisphosphate and proceeds via a diacylglycerol (DAG) intermediate that is cleaved to 2-AG by one of 2 diacylglycerol lipases, DAGL $\alpha$  or DAGL $\beta$ .<sup>83,84</sup> It appears likely that the DAG intermediate of 2-AG is synthesized on demand following

- Depolarization-induced activation of voltage-gated Ca<sup>2+</sup> channels, wherein the increased intracellular Ca<sup>2+</sup> concentration facilitates cleavage of phosphatidylcholine (PC) by phospholipase D to phosphatidic acid (PA), and subsequent removal of the phosphate group via PA phosphatase, to yield DAG;
- Activation of Gq/11-coupled receptors, such as metabotropic glutamate receptors and muscarinic acetylcholine receptors, coupled to phospholipase C (PLC $\beta$ )-mediated generation of DAG;
- Increase in DAG through activation of PLC $\gamma$ -coupled tyrosine kinase-linked growth factor receptors;
- Combinations of these biochemical pathways.<sup>85,86</sup>

Most of the DAG in the brain is enzymatically degraded by monoacylglycerol lipase (MAGL), and even modest systematic inhibition of MAGL can profoundly enhance 2-AG concentrations and effects. Acute inhibition of MAGL activity potentiates CB<sub>1</sub> receptor signaling<sup>87</sup> and produces agonist-like effects in laboratory animals.<sup>88</sup> However, both chronic pharmacological inhibition<sup>89</sup> and genetic deletion<sup>90</sup> of MAGL produce functional reductions in CB<sub>1</sub> receptor signaling (ie,  $\beta$ -arrestin 2-mediated desensitization) rather than activation.<sup>86,91</sup> The  $\alpha$ / $\beta$  domain-containing hydrolase 6,  $\alpha$ / $\beta$  domain-containing hydrolase 12, COX-2, and FAAH enzymes can also participate in the degradation of 2-AG.<sup>92,93</sup>

### The Multifaceted Functioning of the Endocannabinoid System

The neuronal endocannabinoid system involves the concerted actions of endocannabinoids, cannabinoid receptors, and the enzymes responsible for the synthesis and degradation of endocannabinoids. In the CNS, most CB<sub>1</sub> receptors function to modulate neurotransmitter release and are present in particularly high concentrations in preterminal axon segments and axon terminals while being sparsely distributed in the active zone of the synapse<sup>94</sup> (Figure 8). The enzymes involved in endocannabinoid biosynthesis and degradation are also heterogeneously distributed throughout the brain in a manner consistent with their function.<sup>95</sup> In the hippocampus, for example, the DAGL $\alpha$  isoform is concentrated on dendritic spine heads of pyramidal cells and produces 2-AG that participates in retrograde synaptic signaling with presynaptic CB<sub>1</sub> receptors located on afferent terminals, which serves to adjust neurotransmitter release as a function of postsynaptic activity.<sup>96</sup> Monoacylglycerol lipase is found in laminar and punctate staining patterns on the afferent axon terminals instead of the postsynaptic structures at the ultrastructural level, demonstrating the post- and presynaptic segregation of the primary enzymes responsible for synthesis and elimination of 2-AG, respectively, in the human hippocampus. The anatomical arrangement is consistent with the endocannabinoid-mediated retrograde regulation of neuronal activity and synaptic plasticity in the cortex, hippocampus, amygdala, and dorsal striatum involved in executive function, perception, integration, learning, memory, extinction, recall, and habit.<sup>86</sup> Inhibition of synaptic transmission by CB<sub>1</sub> agonists has been demonstrated in diverse regions of the central and peripheral nervous systems, involving glutamatergic, GABAergic, noradrenergic, cholinergic, and other neurotransmitters.<sup>97</sup> For instance, the cannabinoid receptor also functions in the peripheral (although still neuronal) and central (spinal and supraspinal) levels in the pain pathway. Even at the subcortical level where CB<sub>1</sub> density is relatively sparse, the endocannabinoid system regulates the release of hypothalamic orexigenic and anorexigenic signals and modulates activity in mesolimbic dopaminergic incentive pathways and opiodergic hedonic circuits controlling motivation for and perceived value of rewards such as palatable food.<sup>98</sup> The CB<sub>2</sub> receptor is expressed to a much lower extent in



**Figure 8.** Neuronal endocannabinoid system. Reproduced with permission from Lu and Mackie.<sup>100</sup>

neurons in the mammalian CNS. In particular, CB<sub>2</sub> messenger RNA and receptor protein have been found in several brain stem regions, including the dorsal motor nucleus of the vagus, the nucleus ambiguus, and the spinal trigeminal nucleus. Although CB<sub>2</sub> signaling has putative roles in addiction and behavior, its impact in CNS functions and pathologies is less certain than that of the CB<sub>1</sub> system.<sup>99</sup>

Components of the endocannabinoid system are also distributed throughout the periphery and in several nonneuronal tissues, where they participate in a range of physiological and pathological processes. For instance, endocannabinoid signaling in the gastrointestinal tract, adipocytes, liver, kidney, skeletal muscle cells, and pancreas contributes to the control of intestinal motility, nutrient intake, energy storage, metabolism, and elimination processes involved in homeostasis.<sup>101,102</sup> In the male and female reproductive systems, endocannabinoid signaling functions along with hormones in the control of fertility.<sup>103</sup> Cannabinoid receptors are also found on several immune cell types and within organs (eg, spleen and thymus) with immune system function<sup>14,104</sup> that can produce and degrade endocannabinoids. Endocannabinoid tone and exogenous cannabinoid agents such as  $\Delta^9$ -THC modulate cytokine (eg, tumor necrosis factor- $\alpha$ , interleukin-1 $\beta$ , interleukin-6, interleukin-12, and interleukin-10) and chemokine production, the expression of adhesion molecules, and the migration, proliferation, and apoptosis of cells.<sup>105,106</sup> Thus, the endocannabinoid system also

provides an integral component in the regulation of the cell cycle, immune system function, and inflammation. For example, the expression of CB<sub>2</sub> is increased in activated astrocytes, reactive microglia, oligodendrocytes, perivascular microglia, and neural progenitor cells, making the CB<sub>2</sub> receptor a particularly interesting biochemical target for the development of therapeutics for cancer, neuroinflammatory and neurodegenerative diseases, ischemic trauma, and stroke.<sup>107</sup>

### Conclusions and Future Directions

Many advances in our understanding of the receptors, biochemicals, and enzyme systems composing the endocannabinoid system have been made in the past few decades. Because of the widespread distribution and diverse functioning of the system components, the effects observed during its modulation or dysregulation can be numerous and varied. The neuromodulatory role of the system and its actions in the control of energy balance (at the level of both food intake/satiety and peripheral storage and metabolism) are two of the most well-characterized effects observed in humans. Individuals increasing their endogenous cannabinoid tone with cannabis or cannabinoids experience altered sensations, perceptions, cognition, learning, memory, and behavior. The pharmacological effects of either herbal cannabis or  $\Delta^9$ -THC vary in intensity with dose and route of administration and are modulated to some degree by the modest affinity and efficacy of the partial

agonist  $\Delta^9$ -THC. The subjective effects are often perceived as pleasant or euphoric, but increased appetite and antiemetic effects are the only clinically approved therapeutic indications for synthetically derived  $\Delta^9$ -THC (as dronabinol, trade name Marinol) in the United States, and it remains a scheduled substance because of its abuse liability. Consumption of illicit herbal products (eg, "Spice") containing synthetic cannabimimetic alkylindoles with high affinity and efficacy at CB<sub>1</sub> and CB<sub>2</sub> receptors can produce extreme alteration in the subjective effects observed in humans, leading to panic, confusion, anxiety, and other undesirable effects quite dissimilar from  $\Delta^9$ -THC. Chronic repeated exposure to cannabinoid agonists can alter receptor signal transduction and trafficking pathways (eg, receptor internalization and downregulation/desensitization) in a process of adaptation that can lead to tolerance, dependence, and withdrawal upon abstinence. CB<sub>1</sub> receptor expression levels and availability in homeostatic and mesolimbic reward regions are inversely related to body mass index across individuals with and without food intake disorders.<sup>98</sup> Obese individuals decreasing their endogenous cannabinoid tone with the human-use formulation of the inverse agonist SR141716A (rimonabant) tended to lose weight and have improved biological markers of diabetes mellitus.<sup>108–111</sup> However, the drug was removed from the market because of treatment-associated depression and suicidal ideation that could be associated with its inverse agonist activity in the mesolimbic reward system.<sup>98,109,110,112,113</sup>

It should be emphasized that the integration and function of the various components of the endocannabinoid system are complex and that modulation influences diverse physiological processes that continue to be identified and further characterized. As a result, our understanding of drug use, addiction, obesity, and other pathological conditions for which endocannabinoid-based therapeutics might be targeted continues to increase dramatically. Moreover, because of the multifaceted functioning of the system, opportunities for advances in therapeutic agents that directly or indirectly affect CB<sub>1</sub> and CB<sub>2</sub> receptors (eg, medicinal cannabis and synthetic  $\Delta^9$ -THC) are unlikely to provide clinical advantage in the absence of unwanted side effects. Nevertheless, it should also be recognized that the continued investigation of the endocannabinoid system provides a knowledge-based foundation for cannabis use/abuse and the development of more selective, effective, safe therapeutic agents. For example, compounds that selectively target CB<sub>1</sub> but do not cross the blood-brain barrier could eliminate CNS effects, such as abuse liability, yet retain peripheral effects on energy storage and utilization. Therefore, further investigation and development of endocannabinoid system modulators appear to be well-warranted and promising.

## Acknowledgements

Dr Gerald T. Pollard assisted in the critical review and editing of this manuscript.

## Author Contributions

BFT conceived and wrote the brief review.

## Disclosures and Ethics

As a requirement of publication author(s) have provided to the publisher signed confirmation of compliance with legal and ethical obligations including, but not limited to, the following: authorship and contributorship, conflicts of interest, privacy and confidentiality and (where applicable) protection of human and animal research subjects. The authors have read and confirmed their agreement with the ICMJE authorship and conflict of interest criteria. The authors have also confirmed that this article is unique and not under consideration or published in any other publication, and that they have permission from rights holders to reproduce any copyrighted material. Any disclosures are made in this section. The external blind peer reviewers report no conflicts of interest.

## REFERENCES

1. Johnson M, Melvin L, Althuis T, et al. Selective and potent analgesics derived from cannabinoids. *J Clin Pharmacol*. 1981;21:271S–282S.
2. Johnson MR, Melvin LS, Milne GM. Prototype cannabinoid analgesics, prostaglandins and opiates—a search for points of mechanistic interaction. *Life Sci*. 1982;31:1703–1706.
3. Johnson MR, Milne GM. Recent discoveries in the search for non-opiate analgesics. *J Heterocyclic Chem*. 1980;17:1817–1820.
4. Razdan RK. Structure-activity relationships in cannabinoids. *Pharmacol Rev*. 1986;38:75–149.
5. Howlett AC. Cannabinoid inhibition of adenylate cyclase. Biochemistry of the response in neuroblastoma cell membranes. *Mol Pharmacol*. 1985;27:429–436.
6. Howlett AC, Johnson MR, Melvin LS, Milne GM. Nonclassical cannabinoid analgesics inhibit adenylate cyclase: development of a cannabinoid receptor model. *Mol Pharmacol*. 1988;33:297–302.
7. Howlett AC, Qualy JM, Khachatrian LL. Involvement of Gi in the inhibition of adenylate cyclase by cannabimimetic drugs. *Mol Pharmacol*. 1986;29:307–313.
8. Devane WA, Dysarz FA III, Johnson MR, Melvin LS, Howlett AC. Determination and characterization of a cannabinoid receptor in rat brain. *Mol Pharmacol*. 1988;34:605–613.
9. Herkenham M. Cannabinoid receptor localization in brain: relationship to motor and reward systems. *Ann NY Acad Sci*. 1992;654:19–32.
10. Herkenham M, Lynn AB, de Costa BR, Richfield EK. Neuronal localization of cannabinoid receptors in the basal ganglia of the rat. *Brain Res*. 1991;547:267–274.
11. Herkenham M, Lynn AB, Johnson MR, Melvin LS, de Costa BR, Rice KC. Characterization and localization of cannabinoid receptors in rat brain: a quantitative in vitro autoradiographic study. *J Neurosci*. 1991;11:563–583.
12. Herkenham M, Lynn AB, Little MD, et al. Cannabinoid receptor localization in brain. *Proc Natl Acad Sci U S A*. 1990;87:1932–1936.
13. Thomas BF, Wei X, Martin BR. Characterization and autoradiographic localization of the cannabinoid binding site in rat brain using [3H]11-OH-delta 9-THC-DMH. *J Pharmacol Exp Ther*. 1992;263:1383–1390.
14. Kaminski NE, Abood ME, Kessler FK, Martin BR, Schatz AR. Identification of a functionally relevant cannabinoid receptor on mouse spleen cells that is involved in cannabinoid-mediated immune modulation. *Mol Pharmacol*. 1992;42:736–742.
15. Matsuda LA, Lolait SJ, Brownstein MJ, Young AC, Bonner TI. Structure of a cannabinoid receptor and functional expression of the cloned cDNA. *Nature*. 1990;346:561–564.
16. Gerard C, Mollereau C, Vassart G, Parmentier M. Nucleotide sequence of a human cannabinoid receptor cDNA. *Nucleic Acids Res*. 1990;18:7142.
17. Gerard CM, Mollereau C, Vassart G, Parmentier M. Molecular cloning of a human cannabinoid receptor which is also expressed in testis. *Biochem J*. 1991;279:129–134.
18. Munro S, Thomas KL, Abu-Shaar M. Molecular characterization of a peripheral receptor for cannabinoids. *Nature*. 1993;365:61–65.
19. Slipetz DM, O'Neill GP, Favreau L, et al. Activation of the human peripheral



- cannabinoid receptor results in inhibition of adenylyl cyclase. *Mol Pharmacol*. 1995;48:352–361.
20. Bayewitch M, Avidor-Reiss T, Levy R, Barg J, Mechoulam R, Vogel Z. The peripheral cannabinoid receptor: adenylyl cyclase inhibition and G protein coupling. *FEBS Lett*. 1995;375:143–147.
  21. Glass M, Felder CC. Concurrent stimulation of cannabinoid CB1 and dopamine D2 receptors augments cAMP accumulation in striatal neurons: evidence for a Gs linkage to the CB1 receptor. *J Neurosci*. 1997;17:5327–5333.
  22. Breivogel CS, Childers SR. Cannabinoid agonist signal transduction in rat brain: comparison of cannabinoid agonists in receptor binding, G-protein activation, and adenylyl cyclase inhibition. *J Pharmacol Exp Ther*. 2000;295:328–336.
  23. Griffin G, Atkinson PJ, Showalter VM, Martin BR, Abood ME. Evaluation of cannabinoid receptor agonists and antagonists using the guanosine-5'-O-(3-[3S]thio)-triphosphate binding assay in rat cerebellar membranes. *J Pharmacol Exp Ther*. 1998;285:553–560.
  24. Thomas BF, Gilliam AF, Burch DF, Roche MJ, Seltzman HH. Comparative receptor binding analyses of cannabinoid agonists and antagonists. *J Pharmacol Exp Ther*. 1998;285:285–292.
  25. Al-Hasani, Bruchas. Molecular mechanisms of opioid receptor-dependent signaling and behavior. *Anesthesiology*. 2011;115:1363–1381.
  26. Rinaldi-Carmona M, Barth F, Heaulme M, et al. SR141716A, a potent and selective antagonist of the brain cannabinoid receptor. *FEBS Lett*. 1994;350:240–244.
  27. Rinaldi-Carmona M, Barth F, Heaulme M, et al. Biochemical and pharmacological characterisation of SR141716A, the first potent and selective brain cannabinoid receptor antagonist. *Life Sci*. 1995;56:1941–1947.
  28. Tsou K, Patrick SL, Walker JM. Physical withdrawal in rats tolerant to delta 9-tetrahydrocannabinol precipitated by a cannabinoid receptor antagonist. *Eur J Pharmacol*. 1995;280:R13–R15.
  29. Lichtman AH, Martin BR. Delta 9-tetrahydrocannabinol impairs spatial memory through a cannabinoid receptor mechanism. *Psychopharmacology (Berl)*. 1996;126:125–131.
  30. Mallet PE, Beninger RJ. The cannabinoid CB1 receptor antagonist SR141716A attenuates the memory impairment produced by delta9-tetrahydrocannabinol or anandamide. *Psychopharmacology (Berl)*. 1998;140:11–19.
  31. Lichtman AH. SR 141716A enhances spatial memory as assessed in a radial-arm maze task in rats. *Eur J Pharmacol*. 2000;404:175–179.
  32. Wiley JL, Burston JJ, Leggett DC, et al. CB1 cannabinoid receptor-mediated modulation of food intake in mice. *Br J Pharmacol*. 2005;145:293–300.
  33. Arnone M, Maruani J, Chaperon F, et al. Selective inhibition of sucrose and ethanol intake by SR 141716, an antagonist of central cannabinoid (CB1) receptors. *Psychopharmacology*. 1997;132:104–106.
  34. De Vries TJ, de Vries W, Janssen MCW, Schoffeleer ANM. Suppression of conditioned nicotine and sucrose seeking by the cannabinoid-1 receptor antagonist SR141716A. *Behav Brain Res*. 2005;161:164–168.
  35. Ward SJ, Dykstra LA. The role of CB1 receptors in sweet versus fat reinforcement: effect of CB1 receptor deletion, CB1 receptor antagonism (SR141716A) and CB1 receptor agonism (CP-55940). *Behav Pharmacol*. 2005;16:381–388.
  36. De Vries TJ, Homberg JR, Binnekade R, Raaso H, Schoffeleer AN. Cannabinoid modulation of the reinforcing and motivational properties of heroin and heroin-associated cues in rats. *Psychopharmacology (Berl)*. 2003;168:164–169.
  37. Ward SJ, Rosenberg M, Dykstra LA, Walker EA. The CB1 antagonist rimonabant (SR141716) blocks cue-induced reinstatement of cocaine seeking and other context and extinction phenomena predictive of relapse. *Drug Alcohol Depend*. 2009;105:248–255.
  38. Cohen C, Perrault G, Griebel G, Soubrie P. Nicotine-associated cues maintain nicotine-seeking behavior in rats several weeks after nicotine withdrawal: reversal by the cannabinoid (CB1) receptor antagonist, rimonabant (SR141716). *Neuropsychopharmacology*. 2005;30:145–155.
  39. Cohen C, Perrault G, Voltz C, Steinberg R, Soubrie P. SR141716, a central cannabinoid (CB1) receptor antagonist, blocks the motivational and dopamine-releasing effects of nicotine in rats. *Behav Pharmacol*. 2002;13:451–463.
  40. Cippitelli A, Bilbao A, Hansson AC, et al. Cannabinoid CB1 receptor antagonism reduces conditioned reinstatement of ethanol-seeking behavior in rats. *Eur J Neurosci*. 2005;21:2243–2251.
  41. Rinaldi-Carmona M, Barth F, Millan J, et al. SR 144528, the first potent and selective antagonist of the CB2 cannabinoid receptor. *J Pharmacol Exp Ther*. 1998;284:644–650.
  42. McCoy KL, Matveyeva M, Carlisle SJ, Cabral GA. Cannabinoid inhibition of the processing of intact lysozyme by macrophages: evidence for CB2 receptor participation. *J Pharmacol Exp Ther*. 1999;289:1620–1625.
  43. Horswill JG, Bali U, Shaaban S, et al. PSNCBAM-1, a novel allosteric antagonist at cannabinoid CB1 receptors with hypophagic effects in rats. *Br J Pharmacol*. 2007;152:805–814.
  44. Price MR, Baillie GL, Thomas A, et al. Allosteric modulation of the cannabinoid CB1 receptor. *Mol Pharmacol*. 2005;68:1484–1495.
  45. German N, Decker AM, Gilmour BP, et al. Diarylureas as allosteric modulators of the cannabinoid CB1 receptor: structure-activity relationship studies on 1-(4-chlorophenyl)-3-{3-[6-(pyrrolidin-1-yl)pyridin-2-yl]phenyl}urea (PSNCBAM-1). *J Med Chem*. 2014;57:7758–7769.
  46. Greig IR, Baillie GL, Abdelrahman M, Trembleau L, Ross RA. Development of indole sulfonamides as cannabinoid receptor negative allosteric modulators. *Bioorg Med Chem Lett*. 2016;26:4403–4407.
  47. Laprairie RB, Bagher AM, Kelly ME, Denovan-Wright EM. Cannabidiol is a negative allosteric modulator of the cannabinoid CB1 receptor. *Br J Pharmacol*. 2015;172:4790–4805.
  48. Laprairie RB, Kulkarni AR, Kulkarni PM, et al. Mapping cannabinoid 1 receptor allosteric site(s): critical molecular determinant and signaling profile of GAT100, a novel, potent, and irreversibly binding probe. *ACS Chem Neurosci*. 2016;7:776–798.
  49. Pamplona FA, Ferreira J, Menezes de Lima O Jr, et al. Anti-inflammatory lipoxin A4 is an endogenous allosteric enhancer of CB1 cannabinoid receptor. *Proc Natl Acad Sci U S A*. 2012;109:21134–21139.
  50. Pertwee RG. Lipoxin A4 is an allosteric endocannabinoid that strengthens anandamide-induced CB1 receptor activation. *Proc Natl Acad Sci U S A*. 2012;109:20781–20782.
  51. Piscitelli F, Ligresti A, La Regina G, et al. Indole-2-carboxamides as allosteric modulators of the cannabinoid CB(1) receptor. *J Med Chem*. 2012;55:5627–5631.
  52. Nguyen T, Li JX, Thomas BF, Wiley JL, Kenakin TP, Zhang Y. Allosteric modulation: an alternate approach targeting the cannabinoid CB1 receptor. *Med Res Rev*. 2017;37:441–474.
  53. Khajehali E, Malone DT, Glass M, Sexton PM, Christopoulos A, Leach K. Biased agonism and biased allosteric modulation at the CB1 cannabinoid receptor. *Mol Pharmacol*. 2015;88:368–379.
  54. Schwartz TW, Holst B. Allosteric enhancers, allosteric agonists and allosteric modulators: where do they bind and how do they act? *Trends Pharmacol Sci*. 2007;28:366–373.
  55. Bauer M, Chicca A, Tamborini M, et al. Identification and quantification of a new family of peptide endocannabinoids (Pepcans) showing negative allosteric modulation at CB1 receptors. *J Biol Chem*. 2012;287:36944–36967.
  56. Vallee M, Vitiello S, Bellocchio L, et al. Pregnenolone can protect the brain from cannabis intoxication. *Science*. 2014;343:94–98.
  57. Devane WA, Hanus L, Breuer A, et al. Isolation and structure of a brain constituent that binds to the cannabinoid receptor. *Science*. 1992;258:1946–1949.
  58. Felder CC, Briley EM, Axelrod J, Simpson JT, Mackie K, Devane WA. Anandamide, an endogenous cannabinimimetic eicosanoid, binds to the cloned human cannabinoid receptor and stimulates receptor-mediated signal transduction. *Proc Natl Acad Sci U S A*. 1993;90:7656–7660.
  59. Mechoulam R, Ben-Shabat S, Hanus L, et al. Identification of an endogenous 2-monoglyceride, present in canine gut, that binds to cannabinoid receptors. *Biochem Pharmacol*. 1995;50:83–90.
  60. Smith PB, Compton DR, Welch SP, Razdan RK, Mechoulam R, Martin BR. The pharmacological activity of anandamide, a putative endogenous cannabinoid, in mice. *J Pharmacol Exp Ther*. 1994;270:219–227.
  61. Pertwee R, Griffin G, Hanus L, Mechoulam R. Effects of two endogenous fatty acid ethanolamides on mouse vasa deferentia. *Eur J Pharmacol*. 1994;259:115–120.
  62. Savinainen JR, Järvinen T, Laine K, Laitinen JT. Despite substantial degradation, 2-arachidonoylglycerol is a potent full efficacy agonist mediating CB1 receptor-dependent G-protein activation in rat cerebellar membranes. *Br J Pharmacol*. 2001;134:664–672.
  63. Gonsiorek W, Lunn C, Fan X, Narula S, Lundell D, Hipkin RW. Endocannabinoid 2-arachidonyl glycerol is a full agonist through human type 2 cannabinoid receptor: antagonism by anandamide. *Mol Pharmacol*. 2000;57:1045–1050.
  64. Di Marzo V, Fontana A, Cadas H, et al. Formation and inactivation of endogenous cannabinoid anandamide in central neurons. *Nature*. 1994;372:686–691.
  65. Cadas H, Gaillat S, Beltramo M, Venance L, Piomelli D. Biosynthesis of an endogenous cannabinoid precursor in neurons and its control by calcium and cAMP. *J Neurosci*. 1996;16:3934–3942.
  66. Schmid PC, Reddy PV, Natarajan V, Schmid HH. Metabolism of N-acyl ethanolamine phospholipids by a mammalian phosphodiesterase of the phospholipase D type. *J Biol Chem*. 1983;258:9302–9306.
  67. Liu J, Wang L, Harvey-White J, et al. A biosynthetic pathway for anandamide. *Proc Natl Acad Sci U S A*. 2006;103:13345–13350.
  68. Simon GM, Cravatt BF. Characterization of mice lacking candidate N-acyl ethanolamine biosynthetic enzymes provides evidence for multiple pathways that contribute to endocannabinoid production in vivo. *Mol Biosyst*. 2010;6:1411–1418.
  69. Tsuboi K, Ikematsu N, Uyama T, Deutsch DG, Tokumura A, Ueda N. Biosynthetic pathways of bioactive N-acyl ethanolamines in brain. *CNS Neurol Disord Drug Targets*. 2013;12:7–16.



70. Kaczocha M, Glaser ST, Deutsch DG. Identification of intracellular carriers for the endocannabinoid anandamide. *Proc Natl Acad Sci U S A*. 2009;106:6375–6380.
71. Deutsch DG, Chin SA. Enzymatic synthesis and degradation of anandamide, a cannabinoid receptor agonist. *Biochem Pharmacol*. 1993;46:791–796.
72. Desarnaud F, Cadas H, Piomelli D. Anandamide amidohydrolase activity in rat brain microsomes. Identification and partial characterization. *J Biol Chem*. 1995;270:6030–6035.
73. Giang DK, Cravatt BF. Molecular characterization of human and mouse fatty acid amide hydrolases. *Proc Natl Acad Sci U S A*. 1997;94:2238–2242.
74. Hermanson DJ, Gamble-George JC, Marnett LJ, Patel S. Substrate-selective COX-2 inhibition as a novel strategy for therapeutic endocannabinoid augmentation. *Trends Pharmacol Sci*. 2014;35:358–367.
75. Cravatt BF, Demarest K, Patricelli MP, et al. Supersensitivity to anandamide and enhanced endogenous cannabinoid signaling in mice lacking fatty acid amide hydrolase. *Proc Natl Acad Sci U S A*. 2001;98:9371–9376.
76. Lichtman AH, Leung D, Shelton CC, et al. Reversible inhibitors of fatty acid amide hydrolase that promote analgesia: evidence for an unprecedented combination of potency and selectivity. *J Pharmacol Exp Ther*. 2004;311:441–448.
77. Holt S, Comelli F, Costa B, Fowler CJ. Inhibitors of fatty acid amide hydrolase reduce carrageenan-induced hind paw inflammation in pentobarbital-treated mice: comparison with indomethacin and possible involvement of cannabinoid receptors. *Br J Pharmacol*. 2005;146:467–476.
78. Huggins JP, Smart TS, Langman S, Taylor L, Young T. An efficient randomised, placebo-controlled clinical trial with the irreversible fatty acid amide hydrolase-1 inhibitor PF-04457845, which modulates endocannabinoids but fails to induce effective analgesia in patients with pain due to osteoarthritis of the knee. *Pain*. 2012;153:1837–1846.
79. Li GL, Winter H, Arends R, et al. Assessment of the pharmacology and tolerability of PF-04457845, an irreversible inhibitor of fatty acid amide hydrolase-1, in healthy subjects. *Br J Clin Pharmacol*. 2012;73:706–716.
80. Mallet C, Dubray C, Dualé C. FAAH inhibitors in the limelight, but regrettably. *Int J Clin Pharmacol Ther*. 2016;54:498–501.
81. Kaur R, Sidhu P, Singh S. What failed BIA 10-2474 Phase I clinical trial? Global speculations and recommendations for future Phase I trials. *J Pharmacol Pharmacother*. 2016;7:120–126.
82. Kerbrat A, Ferre JC, Fillatre P, et al. Acute neurologic disorder from an inhibitor of fatty acid amide hydrolase. *N Engl J Med*. 2016;375:1717–1725.
83. Farooqui AA, Rammohan KW, Horrocks LA. Isolation, characterization, and regulation of diacylglycerol lipases from the bovine brain. *Ann NY Acad Sci*. 1989;559:25–36.
84. Bisogno T, Howell F, Williams G, et al. Cloning of the first sn1-DAG lipases points to the spatial and temporal regulation of endocannabinoid signaling in the brain. *J Cell Biol*. 2003;163:463–468.
85. Ohno-Shosaku T, Kano M. Endocannabinoid-mediated retrograde modulation of synaptic transmission. *Curr Opin Neurobiol*. 2014;29:1–8.
86. Hillard CJ. The endocannabinoid signaling system in the CNS: a primer. *Int Rev Neurobiol*. 2015;125:1–47.
87. Pan B, Wang W, Long JZ, et al. Blockade of 2-arachidonoylglycerol hydrolysis by selective monoacylglycerol lipase inhibitor 4-nitrophenyl 4-(dibenzo[d][1,3]dioxol-5-yl(hydroxy)methyl)piperidine-1-carboxylate (JZL184) Enhances retrograde endocannabinoid signaling. *J Pharmacol Exp Ther*. 2009;331:591–597.
88. Kinsey SG, O'Neal ST, Long JZ, Cravatt BF, Lichtman AH. Inhibition of endocannabinoid catabolic enzymes elicits anxiolytic-like effects in the marble burying assay. *Pharmacol Biochem Behav*. 2011;98:21–27.
89. Schlosburg JE, Blankman JL, Long JZ, et al. Chronic monoacylglycerol lipase blockade causes functional antagonism of the endocannabinoid system. *Nat Neurosci*. 2010;13:1113–1119.
90. Chanda PK, Gao Y, Mark L, et al. Monoacylglycerol lipase activity is a critical modulator of the tone and integrity of the endocannabinoid system. *Mol Pharmacol*. 2010;78:996–1003.
91. Imperatore R, Morello G, Luongo L, et al. Genetic deletion of monoacylglycerol lipase leads to impaired cannabinoid receptor CB<sub>1</sub>R signaling and anxiety-like behavior. *J Neurochem*. 2015;135:799–813.
92. Blankman JL, Simon GM, Cravatt BF. A comprehensive profile of brain enzymes that hydrolyze the endocannabinoid 2-arachidonoylglycerol. *Chem Biol*. 2007;14:1347–1356.
93. Hermanson DJ, Gamble-George JC, Marnett LJ, Patel S. Substrate-selective COX-2 inhibition as a novel strategy for therapeutic endocannabinoid augmentation. *Trends Pharmacol Sci*. 2014;35:358–367.
94. Nyíri G, Cserép C, Szabadits E, MacKie K, Freund TF. CB1 cannabinoid receptors are enriched in the perisynaptic annulus and on preterminal segments of hippocampal GABAergic axons. *Neuroscience*. 2005;136:811–822.
95. Tsou K, Nogueron MI, Muthian S, et al. Fatty acid amide hydrolase is located preferentially in large neurons in the rat central nervous system as revealed by immunohistochemistry. *Neurosci Lett*. 1998;254:137–140.
96. Katona I, Urban GM, Wallace M, et al. Molecular composition of the endocannabinoid system at glutamatergic synapses. *J Neurosci*. 2006;26:5628–5637.
97. Szabo B. Effects of phytocannabinoids on neurotransmission in the central and peripheral nervous systems. In: Pertwee RG, ed. *Handbook of Cannabis*. New York, NY: Oxford University Press; 2014: 157–167.
98. Ceccarini J, Weltens N, Ly HG, Tack J, Van Oudenhove L, Van Laere K. Association between cerebral cannabinoid 1 receptor availability and body mass index in patients with food intake disorders and healthy subjects: a [<sup>18</sup>F]MK-9470 PET study. *Transl Psychiat*. 2016;6:e853.
99. Van Sickle MD, Duncan M, Kingsley PJ, et al. Identification and functional characterization of brainstem cannabinoid CB2 receptors. *Science*. 2005;310:329–332.
100. Lu H-C, Mackie K. An Introduction to the Endogenous Cannabinoid System. *Biol Psychiat*. 2016;79:516–525.
101. Silvestri C, Di Marzo V. The endocannabinoid system in energy homeostasis and the etiopathology of metabolic disorders. *Cell Metab*. 2013;17:475–490.
102. Pertwee RG. Cannabinoids and the gastrointestinal tract. *Gut*. 2001;48:859–867.
103. Wang H, Dey SK, Maccarrone M. Jekyll and hyde: two faces of cannabinoid signaling in male and female fertility. *Endocr Rev*. 2006;27:427–448.
104. Lynn AB, Herkenham M. Localization of cannabinoid receptors and non-saturable high-density cannabinoid binding sites in peripheral tissues of the rat: implications for receptor-mediated immune modulation by cannabinoids. *J Pharmacol Exp Ther*. 1994;268:1612–1623.
105. Ligresti A, De Petrocellis L, Di Marzo V. From phytocannabinoids to cannabinoid receptors and endocannabinoids: pleiotropic physiological and pathological roles through complex pharmacology. *Physiol Rev*. 2016;96:1593–1659.
106. Klein TW, Lane B, Newton CA, Friedman H. The cannabinoid system and cytokine network. *Proc Soc Exp Biol Med*. 2000;225:1–8.
107. Navarro G, Morales P, Rodríguez-Cueto C, Fernández-Ruiz J, Jagerovic N, Franco R. Targeting cannabinoid CB2 receptors in the central nervous system. Medicinal chemistry approaches with focus on neurodegenerative disorders. *Front Neurosci*. 2016;10:406.
108. Despres JP, Golay A, Sjostrom L. Effects of rimonabant on metabolic risk factors in overweight patients with dyslipidemia. *N Engl J Med*. 2005;353:2121–2134.
109. Pi-Sunyer FX, Aronne LJ, Heshmati HM, Devin J, Rosenstock J. Effect of rimonabant, a cannabinoid-1 receptor blocker, on weight and cardiometabolic risk factors in overweight or obese patients: RIO-North America: a randomized controlled trial. *JAMA*. 2006;295:761–775.
110. Scheen AJ, Finer N, Hollander P, Jensen MD, Van Gaal LF. Efficacy and tolerability of rimonabant in overweight or obese patients with type 2 diabetes: a randomised controlled study. *Lancet*. 2006;368:1660–1672.
111. Van Gaal LF, Rissanen AM, Scheen AJ, Ziegler O, Rossner S. Effects of the cannabinoid-1 receptor blocker rimonabant on weight reduction and cardiovascular risk factors in overweight patients: 1-year experience from the RIO-Europe study. *Lancet*. 2005;365:1389–1397.
112. Faulconbridge LF, Wadden TA, Berkowitz RI, et al. Changes in symptoms of depression with weight loss: results of a randomized trial. *Obesity (Silver Spring)*. 2009;17:1009–1016.
113. Horder J, Cowen PJ, Di Simplicio M, Browning M, Harmer CJ. Acute administration of the cannabinoid CB1 antagonist rimonabant impairs positive affective memory in healthy volunteers. *Psychopharmacology (Berl)*. 2009;205:85–91.