

# Salivary biomarkers may measure stress responses in critically ill children

Despoina Tzira<sup>1</sup>, Anargyroula Prezerakou<sup>1</sup>, Ioannis Papadatos<sup>1</sup>, Artemis Vintila<sup>2</sup>, Anastasia Bartzeliotou<sup>3</sup>, Filia Apostolakou<sup>3</sup>, Ioannis Papassotiriou<sup>3</sup> and Vassiliki Papaevangelou<sup>4</sup>

SAGE Open Medicine

Volume 6: 1–10

© The Author(s) 2018

Article reuse guidelines:

sagepub.com/journals-permissions

DOI: 10.1177/2050312118802452

journals.sagepub.com/home/smo



## Abstract

**Objective:** Measurement of salivary biomarkers can provide important information regarding hypothalamic–pituitary–adrenal axis activity both under normal conditions as well as in response to psychological or physical stress. Our aim was to correlate salivary stress markers, such as cortisol,  $\alpha$ -amylase and immunoglobulin A, with the Pediatric Risk Index Score of Mortality, underlying disease (pathologic, trauma and postoperative), need for mechanical ventilation/sedation and time lag between onset of illness and admission in children admitted in the pediatric intensive care unit.

**Methods:** We enrolled 79 pediatric intensive care unit patients (2–14 years) over a 2-year period, which satisfy the including criteria, but finally salivary biomarkers were evaluated in 65 patients. Saliva samples were collected within 24 h of admission at 8 a.m., 2 p.m. and 8 p.m. to examine potential disruption of circadian rhythm.

**Results:** Overall, the salivary biomarkers were increased; specifically, median values were (a) cortisol at 8 a.m.: 50.04 nmol/L, 2 p.m.: 30.69 nmol/L and 8 p.m.: 247.12 nmol/L; (b)  $\alpha$ -amylase: at 8 a.m.: 22.567 U/L; 2 p.m.: 22.702 U/L and 8 p.m.: 21.484 U/L and (c) IgA at 8 a.m.: 95.10 mg/dL, 2 p.m.: 88.55 mg/dL and 8 p.m.: 80.80 mg/dL. Significantly higher levels were demonstrated in children younger than 6 years and those with Pediatric Risk Index Score of Mortality  $\geq 8$  upon admission. Disturbances in circadian rhythm were observed. Cortisol circadian rhythm disturbance was observed only in children with Pediatric Risk Index Score of Mortality score  $\geq 8$  upon admission while maintaining normal  $\alpha$ -amylase circadian rhythm, which was associated with less than 3 days hospitalization in pediatric intensive care unit. No daily variance in IgA was observed.

**Conclusion:** Salivary biomarkers may serve, in critically ill children, as a sensitive, non-invasive method, important for the early recognition of those at high risk and guiding intervention, before clinical deterioration, promoting the quality of health care in pediatric population.

## Keywords

Salivary cortisol, amylase, IgA, stress, pediatric critical illness

Date received: 18 April 2018; accepted: 29 August 2018

## Introduction

Critical illness may be induced by different underlying life-threatening diseases, such as infection, sepsis, trauma, respiratory insufficiency or hypoxia and severe neurological status. The associated endocrine, nervous, metabolic and immunological changes are defined as acute stress syndrome.<sup>1</sup> These changes are normally adaptive and time limited and aim to improve survival.<sup>2</sup> Unrecognized or untreated clinical deterioration can lead to serious adverse events, prolonged stay in the intensive care unit, poor outcome and even unexpected death.<sup>3,4</sup>

<sup>1</sup>Pediatric Intensive Care Unit, “P. & A. Kyriakou” Children’s Hospital, Athens, Greece

<sup>2</sup>Department of Pediatrics, Thriasio General Hospital, Athens, Greece

<sup>3</sup>Department of Clinical Biochemistry, “Aghia Sophia” Children’s Hospital, Athens, Greece

<sup>4</sup>Third Department of Pediatrics, National and Kapodistrian University of Athens, Athens, Greece

### Corresponding author:

Vassiliki Papaevangelou, Professor of Paediatric Infectious Diseases, Third Department of Pediatrics, National and Kapodistrian University of Athens, School of Medicine, University General Hospital ATTIKON, Rimini 1, Chaidari 12462, Athens, Greece.

Email: vpapaev@med.uoa.gr



Creative Commons Non Commercial CC BY-NC: This article is distributed under the terms of the Creative Commons

Attribution-NonCommercial 4.0 License (<http://www.creativecommons.org/licenses/by-nc/4.0/>) which permits non-commercial use, reproduction and distribution of the work without further permission provided the original work is attributed as specified on the SAGE and Open Access pages (<https://us.sagepub.com/en-us/nam/open-access-at-sage>).

**Table 1.** Salivary biomarkers in healthy and critically ill children.

Study	Population	Cortisol (nmol/L)	SAA (U/L)	SIgA (mg/dL)
Maguire et al. <sup>21</sup>	N=22 (5.1–18.5 years) Healthy children	8 a.m.: 0–25 (range) 12 mid-day: 0–10 8 p.m.: 0–4		
Gröschl et al. <sup>22</sup>	N=212 (2–15 years) Healthy children	8 a.m.: 3–54.9 (range) 2 p.m.: 1.1–2.7 8 p.m.: 0.2–8.7		
Balbao et al. <sup>23a</sup>	N=15 (49–187 months) Healthy children N=32 (0.7–201 months) Critically ill children	18.8 median (8–53.5) range 94.1 median (7.7–448.3) range		
Granger et al. <sup>24</sup> Review	Healthy children		400–900 (range)	
Starzak et al. <sup>25</sup>	N=74 (10.05 ± 1.68 years) Healthy children		8 a.m.: 79.83 (mean) ± 43.12 (SD)	2.439 (mean) ± 1.192 (SD)
Jafarzadeh et al. <sup>26</sup>	N=28 (1–10 years) Healthy children			8 a.m.: 4.2 (mean) ± 3.85 (SD)
Our study	N=65 (2–14 years) Critically ill children	8 a.m.: 50.04 median (range 4.24–1.563) 2 p.m.: 30.69 median (range 4.76–854) 8 p.m.: 247.12 median (range 4.0–370)	8 a.m.: 22.567 (range 4.46–261.25) 2 p.m.: 22.702 (range 4.32–380.79) 8 p.m.: 21.484 (range: 19.0–145.68)	8 a.m.: 95.10 (range 1–4.84) 2 p.m.: 88.55 (range 3–1.99) 8 p.m.: 80.80 (range 3–2.200)

<sup>a</sup>No specific time for sample collection was mentioned in the daily pattern of salivary  $\alpha$ -amylase and cortisol activity in children, which parallels with the previous findings in adults, but salivary  $\alpha$ -amylase activity over the course of a day is opposite to that observed for cortisol, with lowest levels 1 h after awakening and increasing levels over the day.<sup>27–29</sup>

The neuroendocrine dysfunction (NED) induced by stress significantly differs between healthy<sup>5</sup> and critically ill children<sup>6,7</sup> and likely varies from that in adults. The extent of NED has not been well defined in pediatric critical illness.<sup>8,9</sup> Relative or absolute adrenal insufficiency is a clinical condition, frequently met in intensive care unit patients, associated with fluid- and catecholamine-resistant hypotension, that leads to vasopressor-resistant shock and increases need of vasoactive support.<sup>10,11</sup> Many studies have focused on adrenal insufficiency in pediatric shock and sepsis.<sup>12–14</sup> Moreover, several studies have focused on stress induced by acute respiratory distress syndrome<sup>15</sup> and more recently burns.<sup>16</sup>

Reported incidence rates of adrenal insufficiency widely range from 30% to 88%. This disparity is likely due to the variety of diagnostic strategies. Researchers have attempted to provide the diagnosis of acute stress syndrome based on the observation of high baseline cortisol levels in pediatric patients with serious illness, using adrenocorticotrophic hormone stimulation tests and measurement of the adrenocorticotrophic hormone. The results indicate variability in the use of low- or high-dose corticotropin, in measurement of baseline cortisol level as well as in the use of total or free cortisol levels.<sup>17,18</sup>

Initially, salivary cortisol and  $\alpha$ -amylase measurement has been used to estimate perceived stress in healthy children and were measured in different age groups, gender, body mass index (BMI) and pubertal development.<sup>19,20</sup> Few studies have aimed to compare normal values in healthy children

and those with critical illness (Table 1). Variations in cortisol and  $\alpha$ -amylase reactivity in saliva have been observed with age, but not with BMI, sex and even menstruation in girls.<sup>27</sup>

Salivary cortisol has been used as an alternative tool for hypothalamic–pituitary–adrenal (HPA) axis function and deregulation.<sup>30</sup> Salivary  $\alpha$ -amylase (sAA) is suggested to reflect catecholaminergic changes due to increased activation of the sympathetic–adrenal–medullary (SAM) system during physical and psychological stress.<sup>31</sup> High levels of salivary cortisol and sAA have been related with psychological and physical stress.<sup>32,33</sup> Importantly, sAA seems to be more sensitive in conditions of acute stress compared with salivary cortisol.<sup>34,35</sup>

Little is known about salivary innate and adaptive immune responses to stress especially in children.<sup>36</sup> Neuroendocrine regulation of secretory IgA (SIgA) synthesis and secretion and potential implications in oral health have been studied.<sup>37</sup> Moreover, it has been demonstrated that psychological and physical stress may alter SIgA concentrations.<sup>38,39</sup> However, no published studies have been reported on the potential role of SIgA in pediatric patients with critical illness.

Over recent years, studies have shown the inability of early recognition of illness severity in acutely ill pediatric patients and recognition of those at risk for physiological deterioration.<sup>40–42</sup> In order to improve outcome, studies have evaluated warning signs and clinical alert criteria.<sup>43–45</sup>

In the context of pediatric intensive care management, risk factors have been established for predicting mortality, prognosis and outcome by the application of different

scoring systems (Pediatric Index of Mortality (PIM), PIM2, PIM3, PRISM and PRISM III).<sup>46–48</sup> Through the years, the quality of patient care for children admitted to intensive care units (ICUs) has significantly improved, achieving high survival ratios and documented decline in pediatric intensive care unit (PICU) mortality.<sup>49,50</sup> Moreover, the main goal should be long-term (health-related) quality of life.<sup>51</sup>

Over the past decade, research has focused on the identification of new biomarkers that might support diagnosis and prognosis of disease. More specifically, the need for the development of a rapid, validated, non-invasive and low cost method has led to extensive research on saliva as an ideal biological fluid.<sup>52–54</sup> Indeed, if further research indicates that salivary biomarkers are able to early recognize children in severe stress, their measurement may be a useful tool in ICU patients but also in the emergency room.

In this study, we aimed to correlate salivary biomarkers, such as cortisol,  $\alpha$ -amylase and SIgA, with disease severity in children admitted in the PICU. It was hypothesized that in case such a correlation was observed, these salivary biomarkers could be added to the existing scoring systems used for the early detection for critical illness.

## Material and methods

### Study population

A prospective study was conducted in the PICU of “P. & A. Kyriakou” Athens Children’s Hospital over a time period of 3 years (January 2011 to January 2014). This is an 8-bed tertiary PICU, in which critically ill children aged 1 month to 18 years with pediatric, oncologic, surgical disease as well as trauma are admitted. Since previous studies including stress biomarkers in PICU patients are lacking, no calculation of sample size was performed for this study. The protocol was approved by the hospitals Ethics committee.

All children admitted to the PICU during the study period were offered enrollment. Parents were informed about this observational study and asked to provide written informed consent. Exclusion criteria included age < 2 years, immunodeficiency, use of steroids, underlying malignancy, expected discharge within 24 h (usually children admitted for post-surgical observation) or imminent death. In addition, enrolled children in which we failed to collect all three samples at the pre-determined daily assessment were excluded from analysis. Assessment of patients enrolled included demographics (age at admission, gender and underlying disease) and clinical data (past medical history, underlying disease and symptoms and signs), while illness severity was assessed upon admission to PICU by calculating the Pediatric Risk Index Score of Mortality (PRISM III), according to the equation described by Pollack et al.<sup>55</sup> The Pediatric Risk of Mortality (PRISM) score is one of the main predictors of outcome used in the PICUs. It uses clinical and laboratory parameters and an increased score is associated with higher mortality. Additional clinical data included the

following: type of admission (medical, surgical or trauma), mechanical ventilation/sedation, treatment with vasoactive drugs, length of stay in the PICU and mortality. Salivary biomarkers were measured and compared in the groups of patients by sex and age (2–5 and 6–14 years). Also, in order to demonstrate the severity of illness, biomarkers were compared in patients with different types of admission, with PRISM score lower and equal/higher than 8, in those who are supported with mechanical ventilation and without mechanical ventilation, in those in need of vasoactive support and those who remains hospitalized in PICU above 3 days. To better describe how acutely ill our patients were, we arbitrarily selected to categorize our subjects in those admitted within less or more than 6 h from disease onset. By taking into account whether the child had a PRISM score equal/higher or lower than 8, whether he or she was supported with mechanical ventilation, whether he or she need vasoactive support at the first 24 h in PICU and whether he or she stayed for more or less than 3 days in the PICU, two severity groups were created, in order to compare salivary biomarkers in gravitated conditions. The results of saliva assessment were compared with those from reported studies in healthy and critical ill children, which provide values overall, without taking into account puberty, BMI, gender and other possible influencing factors like pain and sleep/sedation.

### Sample collection/analysis

Saliva samples were obtained, without any pre-treatment, only during the first 24 h of hospitalization in the PICU using the Salivette saliva collection system. For sampling, the Salivette swab (Sarstedt Ag & Co., Nümbrecht, Germany) was placed into the patient’s mouth for 2–5 min by a specially trained nurse. The technique did not differ in intubated patients. A minimum of 0.2 mL of saliva was needed as per the manufacturer’s recommendations to saturate the swab. The samples were then stored at  $-70^{\circ}\text{C}$  until analysis. To determine whether the circadian pattern of cortisol and  $\alpha$ -amylase secretion was retained, three samples were collected (8.00 a.m., 2.00 p.m. and 8.00 p.m.).

Salivary cortisol concentrations were measured using an electrochemiluminescence immunoassay using the Elecsys/Cobas e411 immunochemistry analyzer (Roche Co., Basel, Switzerland). The intra- and inter-assay precision coefficients of variation for salivary cortisol ranged from 1.5% to 6.1% and 4.1% to 8%, respectively. The analytical sensitivity was between 1.00 and 1750 nmol/L or 0.036 and 63.4  $\mu\text{g/dL}$  (defined by the Limit of Detection and the maximum of the master curve). Salivary  $\alpha$ -amylase concentrations were determined with Siemens Advia 1800 Clinical Chemistry System (Siemens Healthcare Diagnostics, Tarrytown, NY, USA) using the International Federation of Clinical Chemistry and Laboratory Medicine (IFCC) method.

Salivary secretory IgA (SIgA) concentrations were determined by means of an immune-nephelometric technique using the BN ProSpec nephelometer (Siemens Healthineers,

Erlangen, Germany). According to the manufacturer, the inter- and intra-assay coefficients of variation ranged 3.9%–6.8% and 1.8%–5.9%, respectively.

### Statistical analysis

The analysis was conducted with the software SPSS v.22. Descriptive statistics were calculated for all examined variables. Normality was evaluated using the Kolmogorov–Smirnov test. Since values had a non-normal distribution,

non-parametric tests were used for the analysis. Excessive values were excluded. Chi-square analysis was used for the examination of categorical variables and Mann–Whitney's, Kruskal–Wallis and Spearman's Rho analyses for differences in the levels of categorical variables in relation to the continuous. Salivary cortisol values were log-transformed. Significance was set at  $p \leq 0.05$ .

### Results

The study population consisted of 65 children, among 796 PICU admissions during the study period. Most children were excluded either because of age less than 2 years ( $n=357$ ), parental refusal to participate in the study ( $n=56$ ), admission for post-surgical observation ( $n=112$ ), malignancy ( $n=136$ ) or PICU hospitalization duration for less than 48 h ( $n=56$ ). Finally, 14 additional patients were enrolled, but later excluded because of no satisfactory saliva samples obtained, rendering salivary biomarkers immeasurable. Of 65 children for whom complete data were collected, 41 (64.1%) were males. Average age was  $7.52 \pm 3.91$  years. The majority of patients were admitted due to medical illness (52.3%), required mechanical ventilation (70.8%) and stayed at PICU for more than 3 days (66.1%). Table 2 depicts demographic and clinical data of our cohort.

#### Salivary biomarkers in study population

Overall, salivary biomarkers (cortisol, amylase and SIgA) were elevated when compared to the reported normal values in healthy and critical ill children<sup>21–26</sup> (Table 1) without variances concerning age, gender and BMI. Levels of the salivary biomarkers measured in our cohort are shown in Table 3.

#### Salivary biomarkers in different subgroups of patients

Children aged less than 2–5 years had significantly higher cortisol at 8 p.m. ( $73 \pm 93.5$ ) and higher SIgA at 8 a.m. ( $532.18 \pm 1101.5$ ) in comparison to children aged 6–14 years

**Table 2.** Characteristics of the cohort.

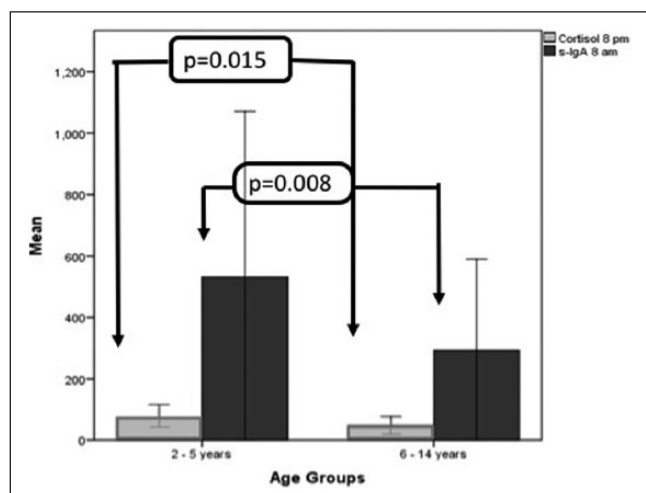
Characteristic	N (%)
Total patients	65
Age (years)	
2–5	23 (35.4)
6–14	42 (64.6)
Gender	
Male	41 (64.1)
Female	24 (36.9)
Type of admission	
Medical	34 (52.3)
Surgical	12 (18.5)
Trauma	19 (29.2)
Underlying disease	21 (32.3)
PRISM	
Less than 8	36 (55.4)
More than 8	29 (44.6)
Mechanical ventilation (MV)	46 (70.8)
Sedation	38 (58.5)
Use of vasoactive drugs	9 (14.1)
Time of admission	
Early (<6 h)	40 (61.5)
Delayed	25 (38.4)
Length of stay in ICU (days)	4.9 (median)
Less than 3 days	22 (33.8)
More than 3 days	43 (66.1)
Deaths	3 (4.6)

ICU: intensive care unit; PRISM: Pediatric Risk Index Score of Mortality.

**Table 3.** Salivary biomarkers (cortisol (nmol/L),  $\alpha$ -amylase (U/L) and IgA (mg/dL)).

	Cortisol 8 a.m.	Cortisol 2 p.m.	Cortisol 8 p.m.	$\alpha$ -Amylase 8 a.m.	$\alpha$ -Amylase 2 p.m.	$\alpha$ -Amylase 8 p.m.	IgA 8 a.m.	IgA 2 p.m.	IgA 8 p.m.
Mean	133.72	102.76	130.38	45,412.98	52,117.11	68,765.15	396.82	342.07	274.49
Median	54.64	32.77	27.37	262.22	260.29	245.50	121.50	102	80.80
SD	272.13	182.15	344.75	158,682.4	194,724.5	254,564.0	767.41	562.35	538.25
SE	32.52	22.25	41.50	18,446.46	23,109.56	30,211.19	102.54	77.24	71.29
95% CI	64.89	44.43	82.81	36,764.43	46,091.44	60,255.47	205.51	155	142.82
99% CI	86.16	59.03	109.99	48,791.85	61,196.18	80,001.93	273.64	206.54	190.12
Min	4.24	4.76	5.21	5.21	23.45	36.56	1.26	1.26	1.26
Max	1563	1163.6	1750	1750.00	11,4591.0	1,456,810	4110	3120	2900

CI: confidence interval; SE: standard error; SD: standard deviation; IgA: immunoglobulin A.



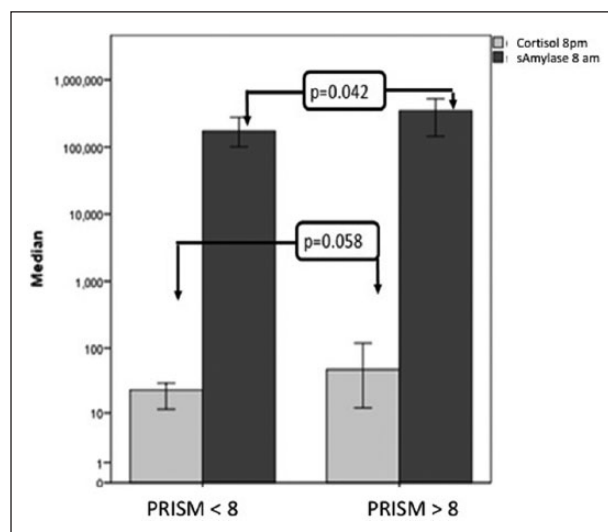
**Figure 1.** Salivary cortisol and SIgA between age groups. Evening salivary cortisol (8 p.m.) and morning SIgA (8 a.m.) were higher in younger children (2–5 years) when compared to the group of older children. Salivary cortisol levels were measured in nmol/L, while salivary IgA in mg/dL. Error bars: 95% CI.

( $47.17 \pm 79.16$ ,  $U=197$ ,  $p=0.015$  and  $292.86 \pm 790.25$ ,  $U=139$ ,  $p=0.008$ ), respectively (Figure 1). When patients were compared according to PRISM score upon admission, those with equal or higher PRISM score ( $>8$ ) were found to have significantly higher levels of saliva  $\alpha$ -amylase at 8 a.m. ( $U=328.5$ ,  $p=0.042$ ). Also, a trend for higher levels of salivary cortisol at 8 p.m. ( $U=228$ ,  $p=0.058$ ) was noted although this difference was not statistically significant (Figure 2). Despite the high levels overall, no significant difference was found between cortisol,  $\alpha$ -amylase and IgA levels when patients were categorized according to type for admission, PRISM score admission (lower/equal/higher than 8), immediate or delayed PICU hospitalization, length of PICU stay, mechanical ventilation and outcome.

Concerning the two severity groups, the results are shown in Table 4. The children in the high-gravity group had significantly higher cortisol at 2 p.m. ( $79.80 \pm 88.21$  vs  $25.80 \pm 24.71$ ,  $U=25$ ,  $p=0.036$ ; Figure 3). Although older children (6–14 years) were more likely to belong to the high-severity group when compared to children 2–5 years old (69.2% vs 30.8%), this difference was not statistically significant.

### Circadian rhythm of salivary biomarkers

Cortisol and  $\alpha$ -amylase normality was maintained by 49.2% and 35.4% of children, respectively. Salivary cortisol levels significantly changed during the first hospitalization day (Figure 4). Children maintaining normal cortisol circadian rhythm were more likely to have admission PRISM score  $<8$  ( $p=0.049$ ) and significantly lower salivary cortisol at 8 p.m. ( $U=217$ ,  $p=0.011$ ; Figure 5). Children not maintaining normal cortisol circadian rhythm had significantly higher cortisol



**Figure 2.** Salivary cortisol and  $\alpha$ -amylase according to PRISM score upon admission. Evening salivary cortisol (8 p.m.) and morning amylase levels (8 a.m.) were higher in children with PRISM score greater than 8 upon PICU admission. Salivary cortisol levels were measured in nmol/L, while salivary amylase in mg/dL. Error bars: 95% CI.

**Table 4.** High- and low-gravity group definition.

Variable	High gravity	Low gravity
PRISM	More than 8(29)	Up to 8(36)
Mechanical ventilation	Yes (46)	No (19)
Total days in PICU	More than 3(43)	Up to 3(22)
Vasoactive drugs	Yes (9)	No (56)

PICU: pediatric intensive care unit; PRISM: Pediatric Risk Index Score of Mortality.

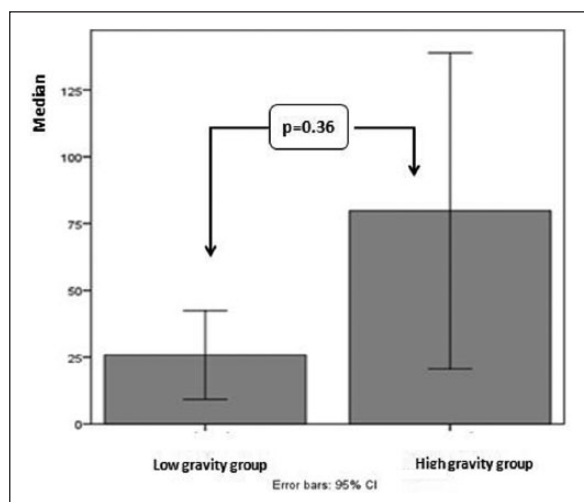
at 8 p.m. ( $U=217$ ,  $p=0.011$ ). Moreover, children who did not maintain normal  $\alpha$ -amylase circadian rhythm had significantly lower  $\alpha$ -amylase at 2 p.m. ( $U=173.5$ ,  $p=0.000$ ).

In addition, children who stayed in the PICU less than 3 days were more likely to maintain normal  $\alpha$ -amylase circadian rhythm ( $p=0.043$ ). Finally, 71.4% of children aged 6–14 years were unable to maintain a normal  $\alpha$ -amylase circadian rhythm as opposed to 28.6% of children aged 2–5 years ( $p=0.068$ ). Overall distribution of salivary biomarkers during the three different time points is shown in Figure 6.

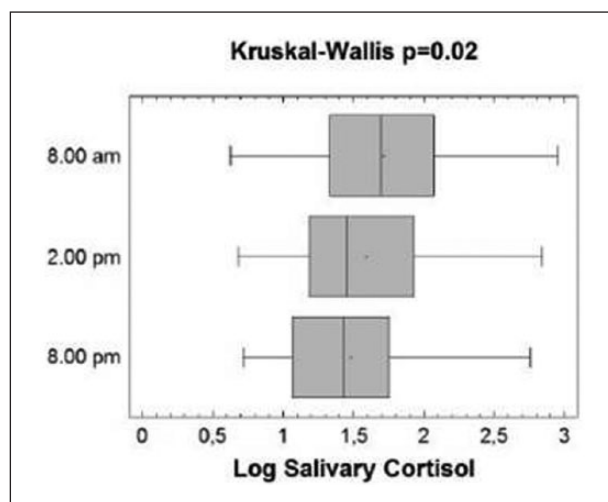
### Discussion

NED in children with life-threatening conditions has been extensively studied over the past 10 years. Although there has been significant research, risk factors for the development of adrenal insufficiency, which aggravates critical illness, remain unclear. Moreover, at present, there are no available biomarkers which may assist clinicians in the early detection of





**Figure 3.** Difference in salivary cortisol at 2 p.m. in the gravity groups.

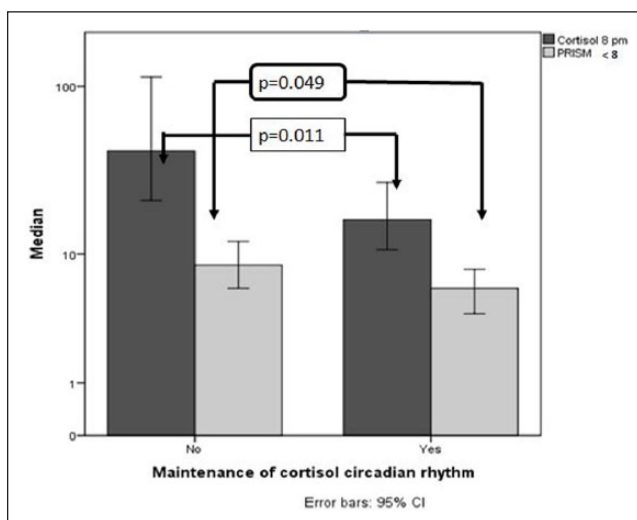


**Figure 4.** Salivary cortisol level changes during the first hospitalization day. Boxes represent the interquartile range, lines inside boxes represent the median value, cross represents mean marker and whiskers represent the lowest and highest observations. ANOVA repeat measures  $p=0.035$  (means) and Kruskal–Wallis  $p=0.02$  (medians).

impeding adrenal insufficiency.<sup>56,57</sup> This is important since these data may increase our understanding of pathogenesis and guide corticosteroid replacement therapy.<sup>58–60</sup>

Recent studies have demonstrated a strong relationship between childhood trauma,<sup>61</sup> stress, maltreatment, post-traumatic stress disorder (PTSD)<sup>62</sup> and deregulation of the hypothalamic–pituitary axis. More recently, salivary biomarker research has focused on physical exercise, obesity,<sup>25</sup> dentistry,<sup>20,54</sup> psychiatric diseases,<sup>63</sup> burns<sup>16</sup> and critical illness.<sup>64</sup>

The majority of studies from sports medicine have shown that SIgA has been implicated in stress and antimicrobial defense.<sup>65,66</sup> Moreover, recent studies have shown that



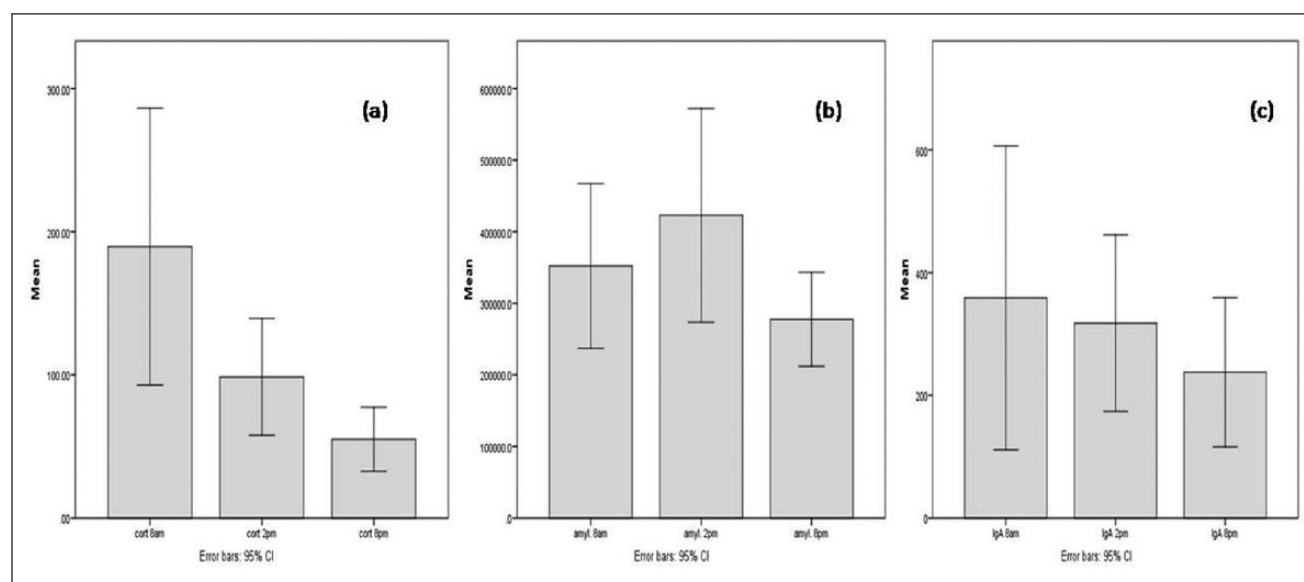
**Figure 5.** Characteristics of children maintaining normal cortisol circadian rhythm. Children maintaining normal cortisol circadian rhythm had lower levels of cortisol at 8 p.m. and had PRISM < 8 upon PICU admission. Error bars: 95% CI.

prolonged exercise and intensified training can evoke decreases in saliva secretion of SIgA resulting to an increased risk of upper respiratory tract infections (URTI) in adolescents and young adults.<sup>39,67</sup> Specifically, high levels of saliva SIgA are associated with low incidence of URTIs.

SIgA plays a significant role in the protection of URTI. SIgA exerts efficient microbial agglutination and virus neutralization and performs non-inflammatory extracellular and intracellular exclusion by inhibiting epithelial adherence and invasion.<sup>68</sup> Numerous studies have attempted to correlate salivary IgA levels to a variety of oral systemic diseases such as caries, periodontal diseases, tonsillitis, adenoid hyperplasia, secretory otitis media and upper respiratory infections.<sup>69,70</sup> Furthermore, it has been suggested that repeated antibiotic treatment may lead to persistently low salivary IgA levels. Sonesson<sup>71</sup> reported lower concentration of salivary IgA in the saliva of children in comparison to adolescents and adults. Levels of SIgA vary widely between individuals.<sup>26</sup>

In our study, levels of daily distribution of salivary biomarkers, namely, cortisol, amylase and SIgA, in a cohort of critically ill children upon admission to PICU are described. Potential association between salivary biomarkers and disease severity established by PRISM upon admission and need for mechanical ventilation, acute stress determined by time between disease onset and PICU admission and outcome ascertained by PICU hospitalization duration and death were assessed.

Overall, salivary biomarkers were significantly elevated when compared to published values in healthy children<sup>22,24–26</sup> (Table 1). As per Gröschl et al.,<sup>22</sup> reference salivary median cortisol levels in healthy children aged 2–15 years are 8 a.m. 3.0–54.9, 2 p.m. 1.1–20.7 and 8 p.m. 0.2–8.7 (nmol/L). Moreover, Maguire et al.<sup>21</sup> reported a range of salivary



**Figure 6.** Daily distribution of salivary biomarkers: (a) cortisol (nmol/L), (b)  $\alpha$ -amylase (U/L) and (c) IgA (mg/dL).

cortisol levels of 0–25 nmol/L at 8 a.m., 0–10 nmol/L at 2 p.m. and 0–4 nmol/L at 8 p.m. in children aged 5–18 years. In reference to sAA, Granger et al.<sup>24</sup> have reported levels ranging between 400 and 900 U/mL in healthy children. Concerning SIgA, Jafarzadeh et al.<sup>26</sup> reported median levels of  $4.26 \pm 3.85$  mg/dL in a small number of healthy children aged 1–10 years. Most recently, Starzak et al.<sup>25</sup> reported a median level of  $2.439 \pm 1.192$  mg/dL. Regarding critically ill children, Balbao et al.<sup>23</sup> reported values ranging between 7.7 and 448.3 nmol/L for salivary cortisol in children aged 0.5–8.3 years. Our results are in accordance with previous data indicating that critically ill children have higher salivary cortisol concentrations.<sup>23</sup> In addition, in this cohort, extremely high concentrations of sAA were observed, although considerable variation in levels was noted (Table 3). Indeed, in our cohort, although levels of SIgA were significantly higher when compared to those reported in healthy children<sup>25,26</sup> (Table 1), a significant variation was observed (Table 3). Therefore, no reliable postulation on the role of SIgA can be made from these data. In general, the significant increase in the examined biomarkers indicates the acute stress induced by critical illness influenced by other factors. Unfortunately, in the existing bibliography, concerning acute stress in pediatric emergency and intensive care is scarce. It has been hypothesized that biomarkers for diagnosing, monitoring and stratifying various forms of critical illness may be important and change the daily clinical practice in PICU.<sup>64</sup>

Importantly, to evaluate whether salivary biomarkers examined herein may be used as prognostic factors, possible association between salivary biomarkers and critical illness in children was examined. Younger children (<6 years old) and those with PRISM score equal and higher than 8 upon PICU admission were more likely to present with increased salivary biomarkers (Figures 1 and 2). Of note, we arbitrarily

elected to compare children according to their PRISM score upon admission (<8 and  $\geq 8$ ) following previous studies.<sup>72</sup>

Significant observations concerning the circadian rhythmicity were demonstrated. Most children had alteration of the circadian rhythm of both cortisol and  $\alpha$ -amylase. Regarding salivary cortisol, children with a PRISM score equal and higher than 8 upon admission were more likely to present with disruption of cortisol circadian rhythm which was most likely due to an increase in their cortisol values at 8 p.m. Gonzalez et al.<sup>73</sup> previously demonstrated abnormalities in cortisol regulation in children admitted to PICU lasting for 3–6 months post discharge. Moreover, putting together disease severity markers, namely, PRISM equal and  $>8$  upon admission, mechanical ventilation, use of vasoactive support and hospitalization in the PICU for more than 3 days, a group of high-gravity children was formed. However, in this group of children, only higher salivary cortisol levels at 2 p.m. were observed, possibly due to the small number of children in our cohort. sAA rhythm was frequently disrupted, mainly due to decreased levels at 2 p.m., since only the 35.4% of the study population maintained normality. Moreover, since altered circadian rhythm of  $\alpha$ -amylase was observed among children who remained hospitalized in the PICU for more than 3 days, an indirect marker of severity, one may postulate that decrease in sAA levels at 2 p.m. may serve as a surrogate marker of disease severity.

Overall, the development of biomarkers, especially in critically ill children, is important for the early diagnosis, guidance of treatment and monitoring.<sup>74</sup> The main goal is to discover specific associations between salivary biomarkers and NED or even outcome in pediatric critical care. These markers might be useful in understanding the pathogenesis and more importantly might assist in the early detection of the subgroup of patients in need of additional support.<sup>40–42</sup>

Salivary biomarkers are easy to obtain by non-invasive methods. Therefore, they could be used in combination with warning signs and clinical alert criteria,<sup>43–45</sup> in order to improve quality of care for critically children. The major challenge to be resolved before salivary biomarkers may be used in clinical practice is the harmonization of measurements since to date reports use different methodologies and variable reference ranges.

This study has several limitations. No healthy controls were included. Saliva samples were not examined simultaneously with blood samples. Furthermore, samples were taken only on the first day, upon PICU admission, whereas more samples examined prospectively might have provided valuable data and address association of salivary biomarkers with prognosis. Notably, time between disease onset and PICU admission as well as between admission and first sample collection differ between patients. These are undoubtedly factors that may affect biomarker levels. However, in such prospective studies, such limitations are difficult to overcome. Moreover, other potential influencing factors including puberty and sleep destruction were not evaluated. Importantly, one may postulate that the number of children was small and therefore the study lacks power to reveal meaningful associations. Moreover, the variance of values was significant. Furthermore, since biomarkers may be influenced by multiple confounding factors including age, sex and underlying disease, the results of this study rather represent a first attempt to describe potential associations rather than providing evidence for use of salivary biomarkers as a tool to estimate stress and outcome. These limitations were mainly due to logistical and financial constraints. Finally, results on sAA and SIgA need to be confirmed in future studies since considerable variations in levels were noted limiting the interpretability of these biomarkers.

## Conclusion

Despite aforementioned constraints, this study contributes to the literature by describing a pattern of salivary biomarkers in critically ill children. It is crucial to establish a practical and objective method which may provide clinical and/or laboratory criteria to identify children with severe stress and therefore poor prognosis upon admission to PICU. Ideally, this method should be easy to use, require no extensive experience of the observer, should be easy to reproduce, have a low cost and be minimally invasive and highly accurate. Salivary biomarkers may help identify children at high risk. Therefore, they may be easily added in existing scales used for evaluating children upon admission and monitoring critically ill children during hospitalization in the PICU.

However, inconsistent findings demonstrate the need to establish normative cortisol,  $\alpha$ -amylase and SIgA salivary levels and further describe changes in acute stress. Thence, using such a non-invasive method, salivary stress markers may potentially be added in new scores and assist clinicians

to early identify the subgroup of patients with critical illness and poor prognosis in need of additional support.

## Acknowledgements

We thank the medical and nurse staff in PICU department at “P. & A. Kyriakou,” Children’s Hospital, Athens, Greece for data collection.

## Declaration of conflicting interests

The author(s) declared no potential conflicts of interest with respect to the research, authorship, and/or publication of this article.

## Ethical approval

We obtained ethical approval from the Ethics Committee of “P. & A. Kyriakou,” Children’s Hospital, Athens, Greece where the study took place. The approval was issued on 7 July 2010.

## Funding

The author(s) received no financial support for the research, authorship, and/or publication of this article.

## Geolocation information

This work took place in a tertiary pediatric hospital in Athens, Greece.

## Informed consent

All participants were enrolled only after parents provided written informed consent.

## Lay summary

This study aimed to quantify stress in acutely ill children hospitalized in intensive care by measuring molecules in saliva during the first 24 h after admission. Indeed, it was found that the stress hormone, namely cortisol, as well as salivary amylase and secretory immunoglobulin A were increased in acutely ill children. Moreover, higher salivary markers were found in children younger than 6 years and those admitted with a high severity score upon admission, implying that if these findings are confirmed, measuring these molecules in saliva may help identifying children at high risk needing additional support.

## Trial registration

This was an observational study and therefore we did not proceed to obtain trial registration.

## ORCID iD

Vassiliki Papaevangelou  <https://orcid.org/0000-0001-6075-3002>

## References

1. Chrousos GP. Stress and disorders of the stress system. *Nat Rev Endocrinol* 2009; 5: 374–381.
2. Mc Ewen BS. Physiology and neurobiology of stress and adaptation: central role of the brain. *Physiol Rev* 2007; 87(3): 873–904.



3. Hassan-Smith Z. Overview of the endocrine response to critical illness: how to measure it and when to treat. *Best Pract Res Clin Endocrinol Metab* 2011; 25: 705–717.
4. Shulman DI, Palmert MR and Kemp SF. Adrenal insufficiency: still a cause of morbidity and death in childhood. *Pediatrics* 2007; 119(2): e484–e494.
5. Charmandari E, Achermann JC, Carel JC, et al. Stress response and child health. *Sci Signal* 2012; 5(248): mr1.
6. Menon K, Ward RE, Lawson ML, et al. A prospective multicenter study of adrenal function in critically ill children. *Am J Respir Crit Care Med* 2010; 182(2): 246–251.
7. Hebbar K, Rigby MR, Felner EI, et al. Neuroendocrine dysfunction in pediatric critical illness. *Pediatr Crit Care Med* 2009; 10(1): 35–40.
8. Trimarchi T. Endocrine problems in critically ill children: an overview. *AACN Clin Issues* 2006; 17(1): 66–78.
9. Langer M, Modi BP and Agus M. Adrenal insufficiency in the critically ill neonate and child. *Curr Opin Pediatr* 2006; 18(4): 448–453.
10. Charmandari E, Nicolaides NC and Chrousos GP. Adrenal insufficiency, www.thelancet.com
11. Hebbar KB, Stockwell JA, Leong T, et al. Incidence of adrenal insufficiency and impact of corticosteroid supplementation in critically ill children with systemic inflammatory syndrome and vasopressor-dependent shock. *Crit Care Med* 2011; 39(5): 1145–1150.
12. Inwald DP, Butt W and Tasker RC. Fluid resuscitation of shock in children: what, whence and whither? *Intensive Care Med* 2015; 41(8): 1457–1459.
13. Brierley J, Carcillo JA, Choong K, et al. Clinical practice parameters for hemodynamic support of pediatric and neonatal septic shock: 2007 update from the American College of Critical Care Medicine. *Crit Care Med* 2009; 37: 666–688.
14. Linck Júnior A, Rego Filho Ede A, Moriya LK, et al. Adrenal insufficiency in children with sepsis. *Rev Bras Ter Intensiva* 2011; 23(4): 478–483.
15. Samransamruajkit R, Jitchaiwat S, Deerojanawong J, et al. Adrenal insufficiency in early phase of pediatric acute lung injury/acute respiratory distress syndrome. *J Crit Care* 2007; 22(4): 314–318.
16. Brown NJ, Kimble RM, Rodger S, et al. Biological markers of stress in pediatric acute burn injury. *Burns* 2014; 40: 887–895.
17. Mushtaq T, Shakur F, Wales JK, et al. Reliability of the low dose synacthen test in children undergoing pituitary function testing. *J Pediatr Endocrinol Metab* 2008; 21: 1129–1132.
18. Magnotti M and Shimshi M. Diagnosing adrenal insufficiency: which test is best? The 1 µg or the 250 µg cosyntropin stimulation test? *Endocrine Pract* 2008; 14: 233–238.
19. Allen AP, Kennedy PJ, Cryan JF, et al. Biological and psychological markers of stress in humans: focus on the Trier Social Stress Test. *Neurosci Biobehav Rev* 2014; 38: 94–124.
20. Evans BE, Greaves-Lord K, Euser AS, et al. Determinants of physiological and perceived physiological stress reactivity in children and adolescents. *PLoS ONE* 2013; 8: e61724.
21. Maguire AM, Ambler GR, Moore B, et al. The clinical utility of alternative, less invasive sampling techniques in the assessment of oral hydrocortisone therapy in children and adolescents with hypopituitarism. *Eur J Endocrinol* 2007; 156(4): 471–476.
22. Gröschl M, Rauh M and Dörr HG. Circadian rhythm of salivary cortisol, 17alpha-hydroxyprogesterone, and progesterone in healthy children. *Clin Chem* 2003; 49(10): 1688–1691.
23. Balbao V, Costa M, Castro M, et al. Evaluation of adrenal function in critically ill children. *Clin Endocrinol* 2014; 81: 559–565.
24. Granger DA, Kivlighan KT, el-Sheikh M, et al. Salivary alpha-amylase in biobehavioral research: recent developments and applications. *Ann N Y Acad Sci* 2007; 1098: 122–144.
25. Starzak DE, Konkol KF and McKune AJ. Effects of cardiorespiratory fitness and obesity on salivary secretory IgA and alpha-amylase in South African children. *Children* 2016; 3(3): E12.
26. Jafarzadeh A, Sadeghi M, Karam GA, et al. Salivary IgA and IgE levels in healthy subjects: relation to age and gender. *Braz Oral Res* 2010; 24(1): 21–27.
27. Harris M, Cox S, Brett C, et al. Stress in childhood, adolescence and early adulthood, and cortisol levels in older age. *Stress* 2017; 20(2): 140–148.
28. Kirschbaum CL and Hellhammer D. Salivary cortisol. In: *Encyclopedia of stress*. Germany: University of Trier, Academic Press, 2000, vol. 3, pp. 379–383.
29. Adam E, Hoyt L and Granger D. Diurnal alpha amylase patterns in adolescents: associations with puberty and momentary mood states. *Biol Psychol* 2011; 88(2–3): 170–173.
30. Jessop DS and Turner-Cobb JM. Measurement and meaning of salivary cortisol: a focus on health and disease in children. *Stress* 2008; 11(1): 1–14.
31. Nater UM and Rohleder N. Salivary alpha-amylase as a non-invasive biomarker for the sympathetic nervous system: current state of research. *Psychoneuroendocrinology* 2009; 34(4): 486–496.
32. Fortunato CK, Dribin AE, Granger DA, et al. Salivary alpha-amylase and cortisol in toddlers: differential relations to affective behavior. *Dev Psychobiol* 2008; 50: 807–18.
33. Hellhammer DH, Wüst S and Kudielka BM. Salivary cortisol as a biomarker in stress research. *Psychoneuroendocrinology* 2009; 34(2): 163–171.
34. Wolf MJ, Nicholls E and Chen E. Chronic stress, salivary cortisol, and alpha-amylase in children with asthma and healthy children. *Biol Psychol* 2008; 78: 20–28.
35. Maruyama Y, Kawano A, Okamoto S, et al. Differences in salivary alpha-amylase and cortisol responsiveness following exposure to electrical stimulation versus the Trier Social Stress Tests. *PLoS ONE* 2012; 7(7): e39375.
36. Bosch JA and Carroll D. Stress and mucosal secretory immunity. In: Fink E (ed.) *Encyclopedia of stress*. 2nd ed. London: Elsevier, 2006, pp. 768–774.
37. Teeuw W, Bosch JA, Veerman EC, et al. Neuroendocrine regulation of salivary IgA synthesis and secretion: implications for oral health. *Biol Chem* 2004; 385: 1137–1146.
38. Matos-Gomes N, Katsurayama M, Makimoto FH, et al. Psychological stress and its influence on salivary flow rate, total protein concentration and IgA, IgG and IgM titers. *Neuroimmunomodulation* 2010; 17(6): 396–404.
39. Ring C, Carroll D, Hoving J, et al. Effects of competition, exercise, and mental stress on secretory immunity. *J Sports Sci* 2005; 23(5): 501–508.
40. Wolfler A, Osello R and Gualino J. The importance of mortality risk assessment: validation of the pediatric index of mortality 3 score. *Pediatr Crit Care Med* 2016; 17: 251–256.
41. Pollack MM, Holubkov R, Funai T, et al. The pediatric risk of mortality score: update 2015. *Pediatr Crit Care Med* 2016; 17: 2–9.
42. Visser IH, Hazelzet JA, Albers MJ, et al. Mortality prediction models for pediatric intensive care: comparison of overall and

- subgroup specific performance. *Intensive Care Med* 2013; 39: 942–950.
43. Namachivayam P, Shann F, Shekerdeman L, et al. Three decades of pediatric intensive care: who was admitted, what happened in intensive care, and what happened afterward. *Pediatr Crit Care Med* 2010; 11(5): 549–555.
  44. Pollack MM, Holubkov R, Funai T, et al. Pediatric intensive care outcomes: development of new morbidities during pediatric critical care. *Pediatr Crit Care Med* 2014; 15: 821–827.
  45. Aspesberro F, Mangione-Smith R and Zimmerman JJ. Health-related quality of life following pediatric critical illness. *Intensive Care Med* 2015; 41: 1235–1246.
  46. Tume L. The deterioration of children in ward areas in a specialist children's hospital. *Nurs Crit Care* 2007; 12: 12–19.
  47. Pearson GA (ed.). Why children die: a pilot study 2006, 2008, <http://www.cemach.org.uk/>
  48. Hodkinson P, Argent A, Wallis L, et al. Pathways to care for critically ill or injured children: a cohort study from first presentation to healthcare services through to admission to intensive care or death. *PLoS ONE* 2016; 11(1): e0145473.
  49. Parshuram CS, Duncan HP, Joffe AR, et al. Multicentre validation of the bedside paediatric early warning system score: a severity of illness score to detect evolving critical illness in hospitalised children. *Crit Care* 2011; 15: R184.
  50. Chapman S, Grocott M and Frank L. Systematic review of paediatric alert criteria for identifying hospitalised children at risk of critical deterioration. *Intensive Care Med* 2010; 36: 600–611.
  51. Seiger N, Maconochie I, Oostenbrink R, et al. Validity of different pediatric early warning scores in the emergency department. *Pediatrics* 2013; 132(4): e841–e850.
  52. Nunes LA, Mussavira S and Bindhu OS. Clinical and diagnostic utility of saliva as a non-invasive diagnostic fluid: a systematic review. *Biochem Med* 2015; 25(2): 177–192.
  53. Helmerhorst EJ and Oppenheim FG. Saliva: a dynamic proteome. *J Dent Res* 2007; 86(8): 680–693.
  54. Zhang A, Sun H and Wang X. Saliva metabolomics opens door to biomarker discovery, disease diagnosis, and treatment. *Appl Biochem Biotechnol* 2012; 168(6): 1718–1727.
  55. Pollack MM, Patel KM and Ruttimann UE. PRISM III: an updated pediatric risk of mortality score. *Crit Care Med* 1996; 24: 743–752.
  56. Uçar A, Baş F and Saka N. Diagnosis and management of pediatric adrenal insufficiency. *World J Pediatr* 2016; 12(3): 261–274.
  57. Nelson L and Markovitz B. Are we correctly diagnosing adrenal insufficiency or are we just spitting into the wind? *Pediatr Crit Care Med* 2015; 16(4): 385–386.
  58. Hanna W and Wong HR. Pediatric sepsis: challenges and adjunctive therapies. *Crit Care Clin* 2013; 29(2): 203–222.
  59. Menon K, McNally JD, Choong K, et al. A cohort study of pediatric shock: frequency of corticosteroid use and association with clinical outcomes. *Shock* 2015; 44(5): 402–409.
  60. Markovitz BP, Goodman DM, Watson RS, et al. A retrospective cohort study of prognostic factors associated with outcome in pediatric severe sepsis: what is the role of steroids? *Pediatr Crit Care Med* 2005; 6(3): 270–274.
  61. Heim C, Nater UM, Maloney E, et al. Childhood trauma and risk for chronic fatigue syndrome: association with neuroendocrine dysfunction. *Arch Gen Psychiatry* 2009; 66(1): 72–80.
  62. Pervanidou P. Biology of post-traumatic stress disorder in childhood and adolescence. *J Neuroendocrinol* 2008; 20(5): 632–638.
  63. Guerry JD and Hastings PD. In search of HPA axis dysregulation in child and adolescent depression. *Clin Child Fam Psychol Rev* 2011; 14(2): 135–160.
  64. Kaplan JM and Wong HR. Biomarker discovery and development in pediatric critical care medicine. *Pediatr Crit Care Med* 2011; 12(2): 165–173.
  65. Walsh NP, Gleeson M, Shephard RJ, et al. Position statement. Part one: immune function and exercise. *Exerc Immunol Rev* 2011; 17: 6–63.
  66. Brandtzaeg P. Secretory IgA: designed for anti-microbial defense. *Front Immunol* 2013; 6: 222.
  67. Nakamura D, Akimoto T, Suzuki S, et al. Daily changes of salivary secretory immunoglobulin A and appearance of upper respiratory symptoms during physical training. *J Sports Med Phys Fitness* 2006; 46(1): 152–157.
  68. Brandtzaeg P. Mucosal immunity: induction, dissemination, and effector functions. *Scand J Immunol* 2009; 70: 505–515.
  69. Lehtonen OP, Tenovuo J, Aaltonen AS, et al. Immunoglobulins and innate factors of immunity in saliva of children prone to respiratory infections. *Acta Pathol Microbiol Immunol Scand C* 1987; 95(1): 35–40.
  70. Parisotto TM, King WF, Duque C, et al. Immunological and microbiologic changes during caries development in young children. *Caries Res* 2011; 45(4): 377–385.
  71. Sonesson M. On minor salivary gland secretion in children, adolescents and adults. *Swed Dent J Suppl* 2011; 215: 9–64.
  72. Costa GA, Delgado AF, Ferraro A, et al. Application of the Pediatric Risk of Mortality Score (PRISM) score and determination of mortality risk factors in a tertiary pediatric intensive care unit. *Clinics* 2010; 65: 1087–1092.
  73. Gonzalez MDP, Als L, Donnell KOA, et al. Salivary cortisol and  $\alpha$ -amylase levels following admission to pediatric intensive care. *Arch Dis Child* 2010; 95(Suppl 1): A44.
  74. Goldman J, Becker ML, Jones B, et al. Development of biomarkers to optimize pediatric patient management: what makes children different? *Biomark Med* 2011; 5: 781–794.