



## REVIEW

# From Reductionism to Holism: Systems-oriented Approaches in Cancer Research

从简化论到整体论：癌症研究中的有机理念

Del reduccionismo al holismo: conceptos orgánicos en la investigación sobre el cáncer

Gunver Kienle, Dr med, Germany; Helmut Kiene, Dr Med, Germany

## Author Affiliations

Gunver S. Kienle, Dr med, and Helmut Kiene, Dr med, are senior research scientists at the Institute for Applied Epistemology and Medical Methodology at the University of Witten/Herdecke in Freiburg, Germany.

## Correspondence

Gunver S. Kienle, Dr med  
gunver.kienle@ifaemm.de

## Citation

Glob Adv Health Med.  
2012;1(5):66-75.

## Key Words

Cancer, reductionism, holism, biology, lymphoma, leukemia, organism, systems medicine

## Disclosure

The authors declare no competing interests.

## ABSTRACT

Somatic mutation theory of cancer has directed cancer research during the last century. A deluge of information on cellular, molecular, and genetic behavior was uncovered, but so was a mind-numbing complexity that still challenges research and concepts, and expectations in the war on cancer have by and large not been fulfilled. A change of paradigm beyond reductionism has been called for, especially as research ubiquitously points at the importance of tissue, microenvironment, extracellular matrix, embryonic and morphogenetic fields, and fields of tissue maintenance and organization in the processes of carcinogenesis, cancer control, and cancer progression, as well as in the control of cellular and genetic behavior. Holistic, organismic systems concepts open new perspectives for cancer research and treatment, as well as general biological understanding.

## 摘要

上个世纪，癌症体细胞突变理论主导着癌症研究。大量有关细胞、分子和基因行为的信息涌现出来，但却极为复杂，令人费解，这也给研究和理念带来挑战，总的来说，并未符合对癌症之战的预期。人们呼吁改变超越简化论的模式，特别是处处指向组织、微环境、细胞外基质、胚胎和形态发生场所、维护组织领域和组织癌变过程、癌症控制和癌症演化以及细胞和基因行为控制组织的重要性的相关研究。整体的有机系统概念可为癌症研究和治疗以及常规的生物学理解开启全新视角。

## SINOPSIS

La teoría del cáncer por mutación somática ha dirigido la investigación sobre el cáncer durante el último siglo. Se ha descubierto un aluvión de información sobre las

conductas celular, molecular y genética, pero también su abrumadora complejidad, que continúa poniendo a prueba la investigación y los conceptos y, en general, no se han cumplido las expectativas en la guerra contra el cáncer. Se ha pedido un cambio de paradigma más allá del reduccionismo, especialmente porque la investigación señala la importancia indudable de los campos tisulares, microambientales, de la matriz extracelular, embrionarios y morfogenéticos, y de los campos de mantenimiento y organización tisular en los procesos de carcinogénesis, control canceroso y progresión cancerosa, así como en el control de la conducta celular y genética. Los conceptos de los sistemas holísticos y orgánicos abren nuevas perspectivas para la investigación y el tratamiento del cáncer, además de impulsar la comprensión biológica en general.

*“Brücke and I, we have sworn to assert the truth that no forces are effective in the organism other than the strictly physico-chemical.”*

—Emil du Bois-Reymond, physiologist (1818-1896)

## REDUCTIONISTIC AND HOLISTIC PARADIGMS

Cancer research—like all life sciences—has developed in the tension between *nothing-but* and *more-than*<sup>1-3</sup>: The reductionistic paradigm rests on the hypothesis that every living organism is “nothing but” physical and chemical reactions and can be fully explained by interactions of its parts, while the holistic paradigm implies that the whole of a living organism is “more than” the sum of its constituent parts (Box 1).

Both paradigms date back to the ancient Greeks but have intensively directed research during the last centuries. The reductionistic paradigm was dominant during the last century. It was tremendously successful in guiding experimental science in generating an enormous mass of information on cellular and molec-

ular structures, characteristics, behavior, and interactions. This wealth of information, however, also revealed the immense complexity that currently confronts modern biology.

**Multiparticularism:** In human or animal organisms, tens of thousands of relevant functionally diverse biological molecules have been analyzed; hundreds or thousands of them are involved in the same process—such as tumor growth, tumor immunology, or gene function.

**Multirelationism:** These molecules interact with dozens or hundreds of other molecules, selectively and nonlinearly, meaning that the net effect in a biological process can differ substantially from its effect under isolated experimental conditions (“a small change in initial conditions can be vastly amplified to produce chaotic behavior”<sup>4</sup>).

**Pleiotropism, pluripotency, or multifunctionality:** Each cell or molecule, like cytokines, can have multiple functions and effects.

**Box 1** A Comparison of the Reductionistic and Holistic Paradigms<sup>3</sup>

Reductionistic Paradigm	Holistic Paradigm
<b>Particularism and Reductionism:</b> Everything in nature can be reduced to and explained by its parts—cells, molecules, and atoms—and their interaction.	<b>Holism:</b> There is a supramolecular, holistic order in nature; holistic, hierarchical higher natural laws can be found and applied.
<b>Materialism, mechanicism:</b> Every living organism and process can be explained in total by laws of physics and chemistry, equivalent to a machine.	<b>Living nature is a quality of its own:</b> There are special natural laws in living nature, above and in addition to physics and chemistry that can be found and applied.
<b>Darwinism:</b> The only cause of evolutionary change is chance and selection by survival advantage.	<b>Evolutionary holism:</b> There are specific laws of nature that guide evolution.

**Redundancy:** Different molecules and cells have the same effect.

**Context-dependency of the effects:** The effect of a certain molecule or cell on another cell or process is dependent on the context and can be the opposite. “In networks, context is everything.”<sup>5</sup>

These different dimensions of “mind-numbing”<sup>6</sup> complexity that crushed basic concepts of cellular and molecular interactions<sup>7</sup> preclude the precise and clear-cut understanding of how these molecules are integrated in cell, tissue, organ function, or organism as well as a reliable explanation and a precise prediction of biological processes by its constituent parts: “When we get to a certain network complexity, we completely fail to understand how it works”<sup>6</sup> or “Even if you construct a complete list of all the processes known to occur within a cell, that won’t tell you how it works.”<sup>8</sup> Faced with this challenge—to calculate coherent behavior out of more than a universe full of informational data—biology needs an approach “beyond reductionism,”<sup>9</sup> a “whole-istic biology”<sup>10</sup> approach to understand these complex systems. Systems biology became one of the emerging fields in an attempt to understand complex networks with methods like computational biology, simulations, and mathematical modeling. Still, living organisms have essential characteristics that reach beyond the complex interrelationship of thousands of molecules in networks: multilevel systems; an ability to react, adapt, and restore functions; the regulation and harmonization of all functions on different levels. To understand living organisms, a paradigm shift—a conceptual breakthrough—is needed.<sup>11,12</sup>

#### REDUCTIONISTIC CANCER CONCEPT: ARE WE READY TO GO BEYOND?

In cancer research and concepts, “reductionism has been the driving obsession.”<sup>13</sup> Cancer is understood as a cellular disease caused by cancer cells. Normal cells transform into cancer cells through random mutations in certain genes. (“Cancer is caused by alterations in

oncogenes, tumor-suppressor genes, and microRNA genes.”<sup>14</sup>) These mutations can be caused by chemicals, ionizing radiation, or viruses or during normal replication of chromosomes. This leads to increased and uncontrolled cell proliferation through gain-of-function mutations in oncogenes (they stimulate proliferation, survival, metastases) and through loss-of-function mutations in tumor-suppressor genes (they regulate and inhibit cell proliferation, promote DNA repair, induce apoptosis). These mutations are passed on to the daughter cells. Several mutations are needed to initiate cancer (multi-step development). Further mutations accumulate and lead to cancer progression: increased genetic instability generating genetic diversity; growth advantage through self-sufficiency in growth signals and insensitivity to anti-growth signals; aggressiveness; cell survival, evasion of natural cell death (apoptosis); sustained angiogenesis; tissue invasion; metastatic spread, etc. Cancer cells are distinct from normal cells; they are autonomous, uncontrolled by the microenvironment, tissue, organism, and the malignant process is irreversible, progressive, and cumulative, finally leading to the death of the host.<sup>14-17</sup> The adequate therapy according to this paradigm is to completely and aggressively eradicate all cancer cells, accepting mutilation of the patient; accordingly, wording and metaphors in oncology—research, treatment, patient communication, advertisement—are predominantly military.

Methods of cancer research and the concepts of the cancer cell were inspired and guided by two tremendously successful disciplines: parasitology, whose dramatic successes at the end of the 19th and beginning of the 20th centuries inspired all areas of medical research,<sup>18</sup> particularly with the successful discovery of antibiotics, and by the leading discipline of the 20th century, genetics. Seminal steps in the evolution of the reductionistic cancer paradigm are shown in Box 2.

In 1971, US President Richard Nixon declared the “war on cancer” (National Cancer Act of 1971) and announced the goal to cure cancer in the bicentennial year 1976.<sup>19</sup> With a national commitment and a similar concentrated effort that split the atom and took man to the moon, this dreaded disease should be conquered.<sup>20</sup> Although, unquestionably, the treatment and survival rates have substantially improved in some types of cancer such as lymphomas, leukemia, childhood malignancies, and testicular cancer, the overall goal is far from reached despite almost unlimited research funding and the transformation of cancer-drug development into a multibillion dollar industry. Up to 1990, death rates continuously increased, and since then, they slowly decreased, mainly due to cancer prevention through tobacco control and other endeavors.<sup>21</sup> Most patients with solid tumors do not respond to any given drug.<sup>22</sup> Altogether, death rates have changed little, and cancer has remained a major fatal disease in the industrialized world.

Reasons are manifold: inadequate tumor models used in the many cancer-drug screening programs; significant acute and long-term toxicity of anticancer

**Box 2** Seminal Steps in the Evolution of the Reductionistic Cancer Concept<sup>3</sup>

- Johannes Müller (1838): Cancer tissue is built up by cancer cells. Placed the cancer cell in the center of the oncological interest.
- Rudolf Virchow (1855-1863): Extended his aphorism—*Omnis cellula a cellula*—to cancer.
- Theodor Boveri (1914): Somatic mutation theory of cancer: Malignant neoplasms develop from a single cell that acquired a certain abnormality in its chromosome.
- Dulbecco and Sachs (1960-1961): Neoplastic transformation of mouse and hamster cells by DNA viruses; viral DNA is permanently integrated into the cellular DNA.
- Howard Temin (1960-1964): Provirus hypothesis: The RNA of a tumor virus acts as template for synthesis of DNA and is integrated into the cell genome as a provirus. It can serve as a template for progeny RNA viruses and can lead to malignant transformation in progeny cells.
- Berwald and Sachs (1965): Neoplastic transformation of mammalian embryo cells in cell culture by carcinogenic chemicals.
- Huebner and Todaro (1969): Viral oncogene hypothesis: Cells of vertebrates have viral genes that they transmit vertically to progeny cells. These can be activated by carcinogenes, irradiation, or aging and lead to cancer.
- Martin, Vogt, and Duesberg (1970-1973): Investigated first viral oncogene *src* with *src*-deletion mutants.
- Bruce Ames (1973-1975): Identified mutagens in salmonella assay; correlation between mutagenic and carcinogenic properties in chemicals: Carcinogens cause cancer through their ability to mutate genes. (Weinberg: this will “become the credo of our religion.”)
- Michael Bishop and Harold Varmus (1976): Viral oncogene *src* is not a true viral gene but a normal cellular gene. It controls cell division and growth. Normal cells carry potential cancer genes—proto-oncogenes—that can be activated to oncogenes.
- Robert Weinberg, Geoffrey Cooper, and others (1981): Activated oncogenes from cancer cells transferred into NIH 3T3 mouse fibroblasts induce their malignant transformation.
- Weinberg, Barbacid, and Wigler (1982): Human *ras* oncogene is activated by point mutation.
- Sporn, Roberts, and Todaro (1980-1985): Cancer cells produce and respond to their own growth factors (autocrine secretion).
- Cavenee, White (1983): Discovered tumor suppressor gene in retinoblastoma.

drugs; low response rates in patients due to low drug sensitivity (currently, expectations go to select responders and individually target the treatment to molecular characteristics of cancer cells); and rapid evolution of aggressive drug-resistant cells due to high mutation rates and selective pressure, resulting in transitory treatment responses.<sup>22,23</sup> But basically, the empirical observations revealed high complexity that thwarted the presumption of cancer as a “simple story.”<sup>24</sup> The somatic mutation theory was challenged by the multiple discoveries that genes were not the clear-cut “coded instructions”<sup>25</sup> for life, the “command center,”<sup>26</sup> or “hidden ruler of life”<sup>25</sup> as presupposed, where the function and structure clearly and unambiguously follows out of the DNA sequence. Instead, it was revealed that genes

themselves are de facto regulated on many levels: by histones; methylation; splicing (DNA sequences have to be cut out and put together to generate a “gene”) and alternative splicing (DNA sequences may produce different RNAs and hence different proteins);<sup>27-29</sup> RNA-editing;<sup>30</sup> RNA-transport from nucleus to cytoplasm;<sup>31</sup> modification of translation;<sup>32,33</sup> stabilization or degradation of mRNA; posttranslational modifications;<sup>34</sup> acetylation; methylation, etc. So, a certain DNA sequence can participate in the synthesis of many different proteins and many different functions. It is a passive source of material upon which a cell has to draw to synthesize proteins and tissues with certain functions<sup>35</sup> depending on its regulation. Besides, the DNA itself also turned out to be less stable than anticipated, but rather fluid, flexible, and able to reorganize rapidly.<sup>36-38</sup>

In the face of the disappointing results—“The war against cancer is far from over”<sup>39</sup>—the need for a turning point in cancer research and cancer paradigm is called for<sup>40-44</sup>: “The time has come, to shift the cancer paradigm.”<sup>45</sup> This is especially so, as mounting evidence points to the importance of the microenvironment, the tissue and organism in regulating genetic function and cellular behavior, in cancer development.

#### MICROENVIRONMENT REGULATES PHENOTYPE AND GENOTYPE OF CANCER CELLS

Why do we harbor so many potentially malignant tumors without getting cancer? In autopsies, cancer is found quite frequently, in many more instances than it appears during life. For instance, in the prostate glands from deceased young male patients, small foci of histological cancer were found in 27% and 34% of the men in their 30s and 40s, respectively.<sup>46</sup> Autopsies of 110 young and middle-aged Danish women (20-54 years) found malignancy in the breast of 22 women (20%, mostly carcinoma in situ), with multicentric and bilateral lesions in nearly half of them. Of the women in their 40s, 39% had malignant lesions in their breasts. The life-long cumulated frequency of clinical, invasive breast cancer in the Danish population, however, is just 6.5%.<sup>47</sup> In 101 consecutive autopsies of thyroids, occult papillary carcinoma was found in 36%. Ten glands even contained two to five tumor foci. Only a minimal proportion will ever become a clinical carcinoma. These lesions were even regarded as a normal finding not to be treated when incidentally found.<sup>48</sup> There are many other examples.<sup>42</sup>

Cancer cells are less autonomous than assumed: There is deluge of data showing that cell proliferation, survival, apoptosis, differentiation, polarity of cells, gene function, invasiveness, ability to metastasize, angiogenesis, and drug resistance are enhanced, inhibited, or otherwise modified by the microenvironment, the surrounding cells or molecules (Figure 1), including cytokines, lymphocytes, granulocytes, macrophages, fibroblasts, and many others. Interestingly, identical cytokines and identical cells quite commonly have different and often opposite effects on tumor cells' behavior, depending again on the context.<sup>3,7,49,50</sup>

A strong influence on tumor cell behavior is particularly exerted by the extracellular matrix.<sup>42,51-53</sup> Extracellular matrix also regulates normal development and function of an organism: embryogenesis, growth and differentiation of cells, gene function, apoptosis, tissue specificity, tissue structure, and normal homeostasis of the adult organism.<sup>54-58</sup> The classic feature of cancer tissue is the disturbed communication between cells and extracellular matrix.<sup>56,59,60</sup> Breaking cell-cell bonds and intercellular communication is known to induce neoplastic behavior.<sup>61</sup> Experimentally, the interaction between tumor cells and extracellular matrix could be improved by correcting the extracellular matrix receptor integrin (treating with inhibitory  $\beta 1$ -integrin antibodies in a 3-dimensional basement membrane culture). This led to a striking morphological and functional reversion of the breast cancer cells to a normal phenotype. Also, their malignancy in vivo was substantially reduced despite persisting prominent mutations, amplifications, and deletions on the genetic level.<sup>62</sup>

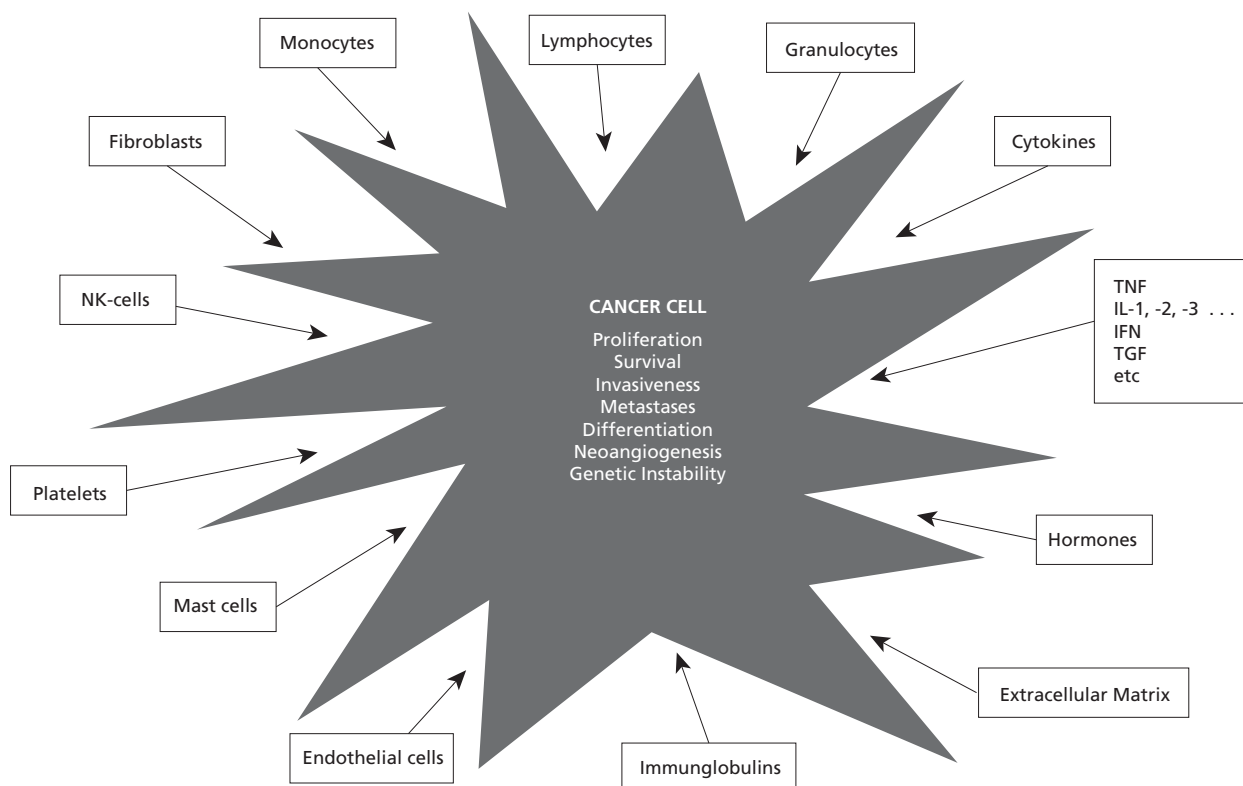
Cells can have a multitude of chromosomal mutations, but as long as the cells are in an appropriate cellular microenvironment that allows a cell to adopt a normal structure, the cell will display a normal phenotype.<sup>56</sup> Normal breast tissue adjacent to breast cancer tissue, for instance, displayed a normal morphological appearance in situ, although the cells contained chromosomal aberrations (loss of heterozygosity) identical to mutations that characterize invasive breast cancer.<sup>51,63</sup> Cancer researcher Bissell concluded,

*The structure of the tissue is dominant over the genome, and that we may need a new paradigm for how epithelia-specific genes are regulated in vivo. We also argue that unless the structure of the tissue is critically altered, malignancy will not progress, even in the presence of multiple chromosomal mutations.*<sup>56</sup>

The normal microenvironment and architecture of the tissue can constrain tumor development but, conversely, can also promote and induce cancer.<sup>42,53</sup>

### TUMOR TISSUE AS A POPULATION

Not only do the microenvironment, surrounding cells, molecules, and extracellular matrix influence the behavior of the tumor, tumor cells themselves also influence each other. Tumor tissue consists of a heterogeneous and dynamic cell population. The multiple subclones in a tumor tissue differ in important behavioral properties, such as growth rate, ability to metastasize, and sensitivity to treatment. When different tumor subpopulations with different characteristics are mixed together to mimic tumor heterogeneity, they influence each other's growth, metastatic behavior, and response to chemotherapeutics or hormones in a way that cannot be predicted from the behavior of the individual subclones. Growth can be induced, enhanced, reduced, or inhibited; insensitive clones can become sensitive and vice versa: Cell clones interact "any way they can."<sup>64-68</sup> The growth of multiple tumors in the same



**Figure 1** The behavior of cancer cells is influenced by various other cells and molecules.



experimental host often results in a mutual decrease in growth rate. After removal of a tumor, the growth of the remaining tumors or metastases is accelerated. When a second tumor was implanted, the growth of the others decreased.<sup>65,69,70</sup> Individual cell types do not function in isolation in a complex system. Cancer should therefore be dealt with and investigated as an integrated organ, a cancer cell society, with its own characteristics, rather than a collection of independently growing cells.<sup>68,71</sup>

### MALIGNANT TRANSFORMATION AND REVERSION OF MALIGNANCY BY THE ENVIRONMENT

Not only the phenotype but also the malignancy itself, the malignant transformation and its reversal, can be induced by the environment. For instance, cancer cells can induce a malignant transformation in neighboring normal cells. This was shown in athymic nude mice transplanted with human tumor cells—a classic experimental model in cancer research. When cells had grown to tumors, these were harvested and investigated: They consisted of either only human cancer cells (as expected), a mixture of both human cancer cells and mouse (host) transformed cells with abnormal karyotypes or chromosomal constitutions, or only transformed mouse cells with specific chromosomal abnormalities and malignant phenotypes.<sup>72-76</sup>

The initial dogma “once a cancer cell, always a cancer cell” was disproven by Barry Pierce and his colleagues, who demonstrated the differentiation of malignant neoplastic cells to benign cell types.<sup>77-79</sup> Back in the 1950s, his observations first of all led to a rejection by *Cancer's* editor, because “everybody knows that cancer cells cannot differentiate.”<sup>80</sup> Today, this phenomenon—cancer cells can differentiate to normal cells with normal behavior when exposed to certain environments or certain substances—is well known.<sup>81</sup>

Illmensee and Mintz were the first to demonstrate that teratocarcinoma cells, when transplanted into normal early embryos (embryoblasts) can reverse to normal cells (Figure 2). These embryos develop into normal healthy mice, which are in fact chimeras, a mosaic of tissues from normal embryonic cells derived from their “natural” parents and of cells derived from the teratocarcinoma that reversed to normality. The ex-carcinoma cells were found in all tissues—skin, eye, blood, bowel, heart, kidney, muscle, reproductive glands, and others. Subsequent breeding of a male showed that it produced viable sperm derived from the original teratocarcinoma cells. The resultant offspring did not develop tumors.<sup>82-85</sup> Similar experiments were conducted in other laboratories with other carcinoma cells such as myeloid leukemic cells,<sup>86,87</sup> neuroblastoma cells,<sup>88,89</sup> and melanoma cells<sup>90,91</sup> and showed that the normal embryonic milieu can reprogram metastatic tumor cells toward benign ones with normal behavior that display cell morphologies resembling the host cells.

The importance of cytoplasmatic, epigenetic regulation for gene (and oncogene) function and for the

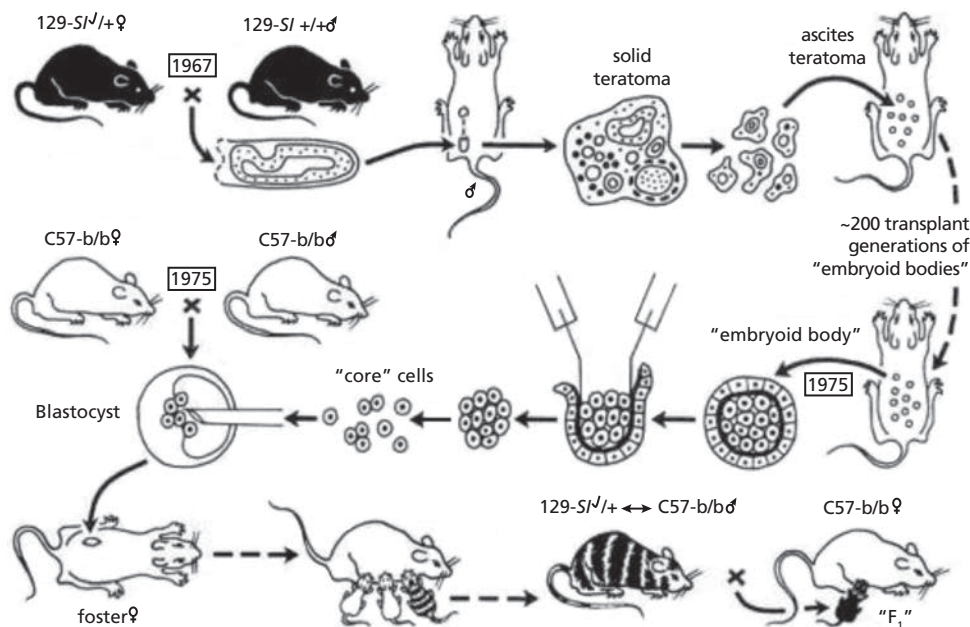
malignant or benign phenotype of the cell was shown by transplantation of nuclei from frog renal adenocarcinoma into activated but enucleated normal frog ova: no growth of cancer cells was observed, but a blastulae development up to early stage tadpoles with normal appearance occurred.<sup>92-94</sup> Transplantation of tissue of these tadpoles into normal hosts generated tissue indistinguishable from normal tissue.<sup>95</sup> Similar results also were observed after transplantation of the nucleus of other cancer types, such as medulloblastomas, melanomas, and some breast cancer and lymphoma cell lines, into enucleated oocytes.<sup>96,97</sup>

Adult tissue can also lead to reconversion of malignant to benign growth. For instance, the transplantation of basal cell carcinomas into the uterus of rats first led to tumor formation, which then regressed. After 4 to 6 weeks, the tumors had disappeared, and progressively larger stretches of the uterine lumen were covered with stratified epithelium, which resembled epidermis.<sup>98</sup> Highly aggressive cancer cells derived from liver epithelial cells produced aggressively growing tumors when transplanted subcutaneously; however, when transplanted into the liver, they lost aggressiveness and neoplastic behavior, either partly or completely with a fully differentiated morphology and integration into hepatic plates. This regulatory capacity of the liver microenvironment declined with advanced age. Although transplanted tumor cells partly responded to epigenetic differentiation signals of the hepatic tissue of older rats or when younger rats grew older, their progeny proliferated again, formed foci, and when removed from the liver, reverted to an aggressively tumorigenic phenotype.<sup>99,100</sup>

Cancer development as a physiological response to environmental perturbations or altered tissue environment was also confirmed by Farber et al, who treated rats with carcinogens, leading to a multitude of small nodules in the liver. These were resistant to a variety of agents, including carcinogens, and showed a whole array of differences from the normal liver tissue. They were regarded as a physiological pattern of adaptation to survive in a hostile environment. Only 2% to 5% of the nodules persisted and became the origin of slow evolution to cancer; the majority (95%-98%) of the nodules disappeared again by differentiation, remodeling, reorganization, and rearrangement of their component hepatocytes and blood vessels to form normal liver tissue.<sup>101,102</sup>

### CANCER AND EMBRYOLOGY AND TISSUE RENEWAL

Cancer cells and tissue closely resemble embryonic and regenerating cells and tissue in their proliferation, migration, invasiveness, neoangiogenesis, undifferentiation, synthesis of fetal proteins, potential immortality, induction of immunological tolerance in the host, etc. However, there is one key difference: In embryonic and regenerating tissues, these processes are highly organized, whereas in cancer they are displaced and unregulated. Cancer, therefore, is seen as “a problem of developmental biology”<sup>103,104</sup> and as a caricature



**Figure 2** Experiments by Mintz and Illmensee: Metastatic melanoma was produced by placing a 6-day male 129 embryo under a testis capsule. Ascites tumor of embryoid bodies was generated and was maintained in 200 transplant generations. The malignant core cells were injected into blastocysts from parents of C57BL/6 mice, which were then transferred to the uterus of pseudopregnant mothers. Normal mice, which were chimeras, were born with coal-colored mosaicism or internal tissue contribution of the 129 tumor cells. A mosaic male produced viable sperm of the 129 genotype. Despite originating from malignant cells, the progeny did not produce tumors. Figure source: Mintz B, Illmensee K, 1975.<sup>81</sup> Reprinted with permission from the author.

of the normal process of tissue renewal, where carcinoma cells grossly exaggerate normal characteristics,<sup>104</sup> or as “wounds that do not heal.”<sup>105</sup>

Interestingly, the ability to develop cancer is inversely correlated to the propensity for regeneration: Cancer has been found only in animals with a low or absent regenerative capacity of complete limbs or head, while animals with a strong ability to rebuild lost limbs hardly ever develop cancer.<sup>106-110</sup> This is especially noticeable in hydra, which can replace all limbs without any difficulties. It can be split in many small particles which assemble again to a new organism. It is potentially immortal. Never has any cancer or other tumor formation been found in hydras.

Turbellaria, a flatworm, has a strong regenerative ability, which differs within the body parts. When the turbellaria was treated with carcinogens, tumors could only be induced in nonregenerative parts of the worm but not in parts with a high regenerative capacity. Still, these tumors did not lead to the death of the worm and healed spontaneously with interesting features. After some growth, an open wound appeared at the tumor site, followed by change of the histological appearance: the tissue became increasingly structured, cells moved to the wound, tumor cells successively differentiated and showed the morphology of the normal local tissue until the tumor had completely disappeared. This process resembled normal regeneration. Sometimes supernumerary organs like little tails developed.<sup>110</sup> Similar observations were made in other powerful regeneration models, such as the lenses and iris or limbs from newts,

showing that the autonomous growth of malignant cells can be brought under control or reintegrated into the biological system by the regenerative process.<sup>111-113</sup> Correspondingly, an impaired, incomplete, or uncoordinated regenerative process after chronic injury or inflammation can give rise to a malignant tumor.<sup>112</sup> This resembles acute feverish infectious diseases in humans that are associated with a reduced cancer incidence and even with cancer remission, while chronic inflammation—which seems to be the result of an individual’s inability to eliminate infection and restore immune homeostasis—increases cancer risk.<sup>114</sup>

#### PHYSICAL ISOLATION AND CANCER

Physical isolation from the biological system alone can induce malignant tumor growth, as was discovered accidentally when rats’ kidneys were wrapped in cellophane film to produce experimental hypertension, but instead unexpectedly induced sarcomas that hardly ever develop spontaneously in these rats. Further investigations revealed that sarcomas could be induced just by embedding plastic films subcutaneously. The sarcomas were induced regardless of the chemical structure of the plastic film. The physical form, the physical separation, was critical. When the plastic had other physical forms, such as perforated film, fibers, textiles, powders, or granules, the sarcoma-inducing ability disappeared and few or no sarcomas were induced any more.<sup>115-118</sup> Thus, cancer can be induced by disturbed tissue topography—by disturbing the normal homeostatic relations and interaction between cells, tissues, and organs, their morphogenetic field.<sup>119</sup>

## TOWARDS AN SYSTEMS-ORIENTED (ORGANISMIC) CONCEPT IN CANCER RESEARCH

Michael Sporn, one of the leading figures in oncogene research (Box 2) stated, “Carcinoma is a disease of the whole organism. Although molecular and cell biology have immense power as analytical tools, the ultimate understanding and control of the process of carcinogenesis will require a new synthesis at the levels of tissue, organ, and organism.”<sup>44</sup> But what is an organism? The postgenomic era overcomes its crisis by making networks to the centerpiece of the new paradigm, of the systems biology’s endeavor to understand biological processes, to find the coordinating principles. While the notion of “system” has been known in biology for a century—with its eminent thinkers Paul Weiss, Ludwig von Bertalanffy, Walter M. Elsasser, and others—its meaning varied over time. Today, systems biology is based on the premise that a living organism consists of an interacting and dynamic network of genes, proteins, and other molecules that cause the function and behavior of the whole macroscopic organism. It uses bioinformatics and embraces a variety of experimental and computational approaches, including data mining to find hidden patterns (automated discovery) and simulation-based analysis to test hypotheses. This is facilitated by the rapid progress in molecular biology generating large quantitative datasets on the one side and the substantial advances in software and computational power on the other side.<sup>120,121</sup>

Creating these network models of biological process, however, still remains a “flat Earth systems biology.”<sup>11</sup> They do not address a whole host of considerations, including the fundamental characteristics of the living organism; the hierarchically structured different levels; emergence (“the behavior of the overall system typically manifests itself in totally new phenomena, called emergent behavior”<sup>4</sup>); cross-level interaction; vertical causality; harmonization; the development of the supracellular form or Gestalt of organs or body parts; the positional information within the whole despite parts being displaced; regeneration; robustness; and the reliable functioning of tissues, organs, and organism over decades or even a century. “For a conceptual breakthrough a new paradigm is needed . . . beyond the current parameters of networks and of systems.”<sup>11</sup>

Holistic thinking in biology can be traced back to ancient Greece and had its zeniths during German idealism with one of its outstanding figures, Johann Wolfgang von Goethe.<sup>1,2,122</sup> The concept of “system” was introduced into modern biology by Paul Weiss. He pointed out that the essence of a living system is its hierarchical order, with the macrodeterminism as its most decisive element: the macroscopic level has a high determinism, a high grade of order and predictability, and can maintain its order while the constituent parts are highly variable.<sup>123,124</sup>

*The property of the system as a whole to build, operate, and maintain itself in a state of desirable order-*

*liness, predictable from its repetitive and systematic recurrence and endurance, in spite of the continued flux and infinitely greater range of variation, hence, unpredictability, of the behavior of its constituent units, which carry out the building, operation, and maintenance. . . . In a system, the structure of the whole coordinates the play of the parts.”<sup>123</sup>*

The living system, ie, organism, is hierarchically ordered and consists of several interacting subordinate sub-systems. Each sub-system regulates its own subordinate smaller parts, restraining their degree of freedom (Figure 3). The system is lawful, and its laws can be found without knowing all of the details of the involved elementary processes.<sup>123</sup> In this sense, Weiss also derived a field theory for developmental biology. The field is structured and ascribes certain qualities, direction, intensities, and functions to every point of the field. It organizes the material. The field concept is similar to the ones in physics.<sup>125</sup> Weiss was also inspired by the Gestalt theory of Christian von Ehrenfels, Wertheimer, Köhler, Koffka, Lewin, and others, who made seminal discoveries that fundamentally influenced the theories of perception and Gestalt psychology.<sup>125-129</sup> A Gestalt is by definition a wholeness. It is more than the sum of its parts, and it is perceived independent of its parts. Gestalt became a model notion for systems biology. In general, scientific objectivity and scientific reasoning, as well as clinical judgment, often rely on Gestalt cognition.<sup>130,131</sup>

These strong concepts influenced many fields of modern science, of holistic and organismic concepts of biology and medicine. One of the most outstanding and well-elaborated organismic concepts of cancer was framed by the molecular and developmental biologists Sonnenschein and Soto. These distinguished cell researchers from Boston start with the question, “Why do cells proliferate?” The dominant premise is that *quiescence*, G<sub>0</sub>, is the default state of a cell in *Metazoa* and that cells divide only when they receive a positive signal, ie, are stimulated by growth factors. This notion has acquired an axiomatic quality although it is seldom discussed and has never been proven. Sonnenschein and Soto now propose the contrary: *proliferation* is the default state of cells, with the consequence that their control is mediated negatively by inhibitory signals. This is based on an evolutionary perspective and on their long experience working with cell cultures. Among microbiologists, it is generally accepted that *proliferation* is the default state of prokaryotes and unicellular eukaryotes; the ability to proliferate is constitutive to these organisms and largely depends on the availability of nutrition. As multicellular organisms evolved from unicellular organisms, a more complex control and restraint of cell proliferation evolved as well. Rate of proliferation depends on cell type, tissue, organ development, and physiological stage. Since cell cycle markers have been highly conserved from yeast to humans, is it implausible that the default state of *proliferation* inherent to unicellular organisms would have switched so fundamentally to *quiescence*.

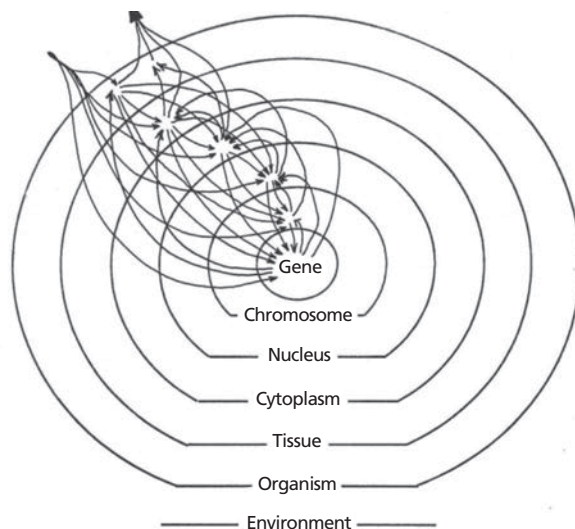
Instead, one can presume that *proliferation* is a constitutive property of all cells—unicellular and multicellular—meaning that cells will exercise their constitutive, built-in capacity to proliferate when adequately nourished and when extracellular or intracellular inhibitors are absent or inactive. This complies with experimental observations on cell proliferation.<sup>41,132</sup>

When proliferation is the default state of a cell, the control of proliferation has to be negative. Growth factors then block this inhibition of cell proliferation. The major difference between unicellular and multicellular systems is the coordinated control of cell regulation. And therein lies the new perspective on organisms and cancer, evolved from the concept of the morphogenetic field, which is a basic paradigm of embryology and developmental biology:

*We posit that in normal, adult, multicellular organisms there are discrete units of tissue maintenance and/or organization; histologically, they comprise the parenchyma and the stroma of an organ. During embryogenesis, adjacent stroma and epithelia exert instructive influences on each other resulting in organ formation. This complex web of interactive signaling continues throughout the lifespan of the individual. We further postulate that these units of tissue maintenance and/or organization are tridimensional and carry positional and historical information. They maintain the normal architecture of all organs and guide tissue turnover, remodeling and healing through a dynamic process.*<sup>41,132</sup>

These units of *tissue organization field* regulate cellular behavior, proliferation, mobility, differentiation, survival, invasiveness, etc. They are the primary locus of cancer development and the primary target of carcinogenic agents. Cancerogenesis begins with a disruption of normal interaction between cells and the subadjacent stroma of an organ. This leads to structural and functional changes in the affected tissue. Individual cells within these lesions recognize misinformation, which may lead to increased proliferation and disorders in organization or appearance such as dysplasia or metaplasia. Further deterioration of the tissue organization and/or maintenance field leads to carcinoma in situ. If the disturbance ceases, the process can still be restored. If the disturbance persists, cancer develops with increasing proliferation, invasiveness, metastatic ability, autonomy, survival, genetic instability, etc, due to diminished regulation by the disturbed morphogenetic field.<sup>41,132</sup>

This tissue organization field theory of cancer implies consequences for carcinogenesis research. Investigation of isolated cancer cells is of little relevance. Important, however, are investigations in the complete tissue, where the core changes are represented, such as in hyperplasia, dysplasia, metaplasia, and carcinoma in situ. Placing cells in a culture dish already disrupts the tissue field, potentially producing malignant cellular behavior because



**Figure 3** Concept of living organism by Paul Weiss: Interactive relations between hierarchically ordered subsystems. Adapted from Weiss PA, 1967.<sup>123</sup>

*The exploration of the tissue organization field theory of carcinogenesis requires the use of tissue recombination and transplantation experiments, comparable to the ones that informed embryologists about the inductive and permissive influences in organogenesis.*<sup>41,132</sup>

The experimental observations described above are compatible with the tissue organization field theory of neoplasia. This theory is also consistent with the conclusion of many researchers who have characterized cancer as

- a disease of organization<sup>133</sup>;
- a breakdown of the hierarchical organization<sup>65</sup>;
- an ongoing systemic failure in growth control<sup>134</sup>; homeostase,<sup>44</sup> or communication between epithelium and stroma<sup>44</sup>;
- a chronic, maladaptive tissue and organismic response to injury<sup>44</sup>;
- a caricature of tissue renewal<sup>103,135</sup>;
- a dynamic developmental disorder<sup>119</sup>;
- a disturbance of the morphogenetic field, specifically the field for tissue organization and/or maintenance<sup>132</sup>;
- a change in the growth-restraining forces<sup>134</sup>;
- a failure of host's organs and tissues to exercise growth control<sup>134</sup>;
- a multicellular life that has partially escaped from the hierarchical controls of tissue, organ, and organismal life<sup>136</sup>;
- an embryonic growth potential released from restraint<sup>134</sup>; and
- a disease of the whole organism.<sup>44</sup>

Further research within this organismic, holistic paradigm that understands cancer as deranged organs acting in the context of an organism has to concentrate on the tissue, organ, and organism.<sup>3</sup> Key requirements are new



and elaborate paradigms and conceptual breakthroughs as well as the investigation of microenvironmental regulation, normal development, tissue architecture, homeostasis, hygiogenesis, repair, and regeneration. Rather than “Why do smokers get cancer?” the question that is relevant is, “Why *don't* smokers get cancer?” Meaning: How do some organisms manage to restore health despite strong carcinogenic influences? Additionally, the restorative function of high feverous infections and the historic success of fever therapy with bacterial vaccines will be of renewed interest.<sup>114</sup> Salutogenetic metaphors may replace the current military ones.

## REFERENCES

- Dijksterhuis EJ. Die Mechanisierung des Weltbildes. Berlin, Göttingen, Heidelberg: Springer; 1956.
- Gloy K. Das Verständnis der Natur. 2. Die Geschichte des ganzheitlichen Denkens. Beck; 1996.
- Kienle GS, Kiene H. Beyond reductionism: zur Notwendigkeit komplexer, organischer Ansätze in der Tumorimmunologie und Onkologie. In: Kienle GS, Kiene H. Die Mistel in der Onkologie. Stuttgart, New York: Schattauer Verlag; 2003:333-432.
- Bonn D. Biocomplexity: look at the whole, not the parts. *Lancet*. 2001;357:288.
- Orosz CG. An introduction to immuno-ecology and immuno-informatics. In: Segel LA, Cohen IR, editors. Design principles for the immune system and other distributed autonomous systems. Oxford, New York: Oxford University Press; 2001:125-49.
- Service RF. Exploring the systems of life. *Science*. 1999;284:80-3.
- Nathan C, Sporn MB. Cytokines in context. *J Cell Biol*. 1991;113(5):981-6.
- Normile D. Building working cells “in silico.” *Science*. 1999;284:80-1.
- Gallagher R, Appenzeller T. Beyond reductionism. *Science*. 1999;284:79.
- Chong L, Ray B. Whole-istic biology. *Science*. 2002;295:1661.
- Mesarovic M, Sreenath SN. Beyond the flat earth perspective in systems biology. *Biol Theory*. 2006;1(1):33-4.
- Mesarovic MD, Sreenath SN, Keene JD. Search for organising principles: understanding in systems biology. *Systems Biology*. 2004;1(1):19-27.
- Weinberg RA. The genetic origins of human cancer. *Cancer*. 1988;61:1963-8.
- Croce CM. Oncogenes and cancer. *N Engl J Med*. 2008;358(5):502-11.
- Hanahan D, Weinberg RA. The hallmarks of cancer. *Cell*. 2000;100(1):57-70.
- Hanahan D, Weinberg RA. Hallmarks of cancer: the next generation. *Cell*. 2011;144(5):646-74.
- Muzny DM, Bainbridge MN, Chang K, Dinh HH, Drummond JA, Fowler G et al. Comprehensive molecular characterization of human colon and rectal cancer. *Nature*. 2012;487:330-7.
- Silverstein AM. A history of immunology. San Diego, New York, Boston, London, Sydney, Tokyo, Toronto: Academic Press Inc; 1989.
- Brennan R, Federico S, Dyer MA. The war on cancer: have we won the battle but lost the war? *Oncotarget*. 2010;1(2):77.
- Nixon, R. State of the Union Address. 1971 Jan 22.
- Jemal A, Ward E, Thun M. Declining death rates reflect progress against cancer. *PLoS ONE*. 2010;5(3):e9584.
- Chabner BA, Roberts TG. Chemotherapy and the war on cancer. *Nature Rev Cancer*. 2005;5(1):65-72.
- Gura T. Systems for identifying new drugs are often faulty. *Science*. 1997;278:1041-2.
- Weinberg RA. Racing to the beginning of the road. The search for the origin of cancer. London, New York, Toronto, Sydney, Auckland: Bantam Press; 1997.
- Dulbecco R. The design of life. New Haven, CT: Yale University Press; 1990.
- Vinson V, Purnell BA, Chin GJ, Marx J. Macromolecular ballet. *Science*. 2000;288(5470):1369.
- Sharp PA. Split genes and RNA splicing. *Cell*. 1994;77:805-15.
- Tamkun JW, Schwarzbauer JE, Hynes RO. A single rat fibronectin gene generates three different mRNAs by alternative splicing of a complex exon. *Proc Natl Acad Sci*. 1984;81:5140-4.
- Lopez AJ. Alternative splicing of pre-mRNA: developmental consequences and mechanisms of regulation. *Annu Rev Genet*. 1998;32(2):279-305.
- Brennicke A, Marchfelder A, Binder S. RNA editing. *FEMS Microbiol Rev*. 1999;23(3):297-316.
- Terry LJ, Shows EB, Wente SR. Crossing the nuclear envelope: hierarchical regulation of nucleocytoplasmic transport. *Science STKE*. 2007;318(5855):1412.
- Farabaugh PJ. Programmed translational frameshifting. *Microbiol Rev*. 1996;60(1):103-34.
- Groisman I, Engelberg-Kulka H. Translational bypassing: a new reading alternative of the genetic code. *Biochem Cell Biol*. 1995;73(11-12):1055-9.
- Walsh CT, Garneau-Tsodikova S, Gatto Jr GJ. Protein posttranslational modifications: the chemistry of proteome diversifications. *Angewandte Chemie Intl Ed*. 2005;44(45):7342-72.
- Nijhout HF. Metaphors and the role of genes in development. *Bioessays*. 1990;12(9):441-6.
- Walbot V, Cullis CA. Rapid genomic change in higher plants. *Ann Rev Plant Physiol*. 1985;36:367-96.
- Bennetzen JL. Transposable element contributions to plant gene and genome evolution. *Plant Mol Biol*. 2000;42(1):251-69.
- Deragon JM, Capi P. Impact of transposable elements on the human genome. *Ann Med*. 2000;32(4):264-73.
- Bailar III JC, Gornik HL. Cancer undefeated. *N Engl J Med*. 1997 May 29;336(22):1569-74.
- Goldstein I, Madar S, Rotter V. Cancer research, a field on the verge of a paradigm shift? *Trends Mol Med*. 2012;18(6):299-303.
- Sonnenschein C, Soto AM. Theories of carcinogenesis: an emerging perspective. Elsevier; 2008:372-7.
- Bissell MJ, Hines WC. Why don't we get more cancer? A proposed role of the microenvironment in restraining cancer progression. *Nature Medicine*. 2011;17(3):320-9.
- Platoni K. Thinking outside the cell. Oakland, CA: East Bay Express; 2007.
- Sporn MB. The war on cancer. *Lancet*. 1996;347:1377-81.
- Schipper H, Goh CR, Wang T-UL. Shifting the cancer paradigm: Must we kill to cure? *J Clin Oncol*. 1995;13(4):801-7.
- Sakr WA, Haas GP, Cassin BF, Pontes JE, Crissman JD. The frequency of carcinoma and intraepithelial neoplasia of the prostate in young male patients. *J Urol*. 1993;150(2 Pt 1):379.
- Nielsen M, Thomsen JL, Primdahl S, Dyreborg U, Andersen JA. Breast cancer and atypia among young and middle-aged women: a study of 110 medicolegal autopsies. *Br J Cancer*. 1987;56:814-9.
- Harach HR, Franssila KO, Wasenius VM. Occult papillary carcinoma of the thyroid. A “normal” finding in Finland. A systematic autopsy study. *Cancer*. 1985;56(3):531-8.
- Balkwill FR. Cytokine therapy of cancer. The importance of knowing the context. *Eur Cytokine Netw*. 1994;5(4):379-85.
- Sporn MB, Roberts AB. The multifunctional nature of peptide growth factors. In: Sporn MB, Roberts AB, editors. Peptide growth factors and their receptors. New York: Springer-Verlag; 1990. p. 3-15.
- Bissell MJ, LaBarge MA. Context, tissue plasticity, and cancer: are tumor stem cells also regulated by the microenvironment? *Cancer Cell*. 2005;7(1):17.
- Kenny PA, Bissell MJ. Tumor reversion: correction of malignant behavior by microenvironmental cues. *Intl J Cancer*. 2003;107(5):688-95.
- Egeblad M, Nakasone ES, Werb Z. Tumors as organs: complex tissues that interface with the entire organism. *Devel Cell*. 2010;18(6):884-901.
- Hagios C, Lochter A, Bissell MJ. Tissue architecture: the ultimate regulator of epithelial function? *Phil Trans R Soc Lond B*. 1998;353(1370):857-70.
- Bissell MJ, Hall HG, Parry G. How does the extracellular matrix direct gene expression? *J Theoret Biol*. 1982;99:31-68.
- Bissell MJ, Weaver VM, Lelièvre SA, Wang F, Petersen OW, Schmeichel KL. Tissue structure, nuclear organization, and gene expression in normal and malignant breast. *Cancer Res*. 1999;59(7 Suppl):1757S-64S.
- Adams JC, Watt FM. Regulation of development and differentiation by the extracellular matrix. *Development*. 1993;117:1183-98.
- Chen CS, Mrksich M, Huang S, Whitesides GM, Ingber DE. Geometric control of cell life and death. *Science*. 1997;276:1425-8.
- Cunha GR. Role of mesenchymal-epithelial interactions in normal and abnormal development of the mammary gland and prostate. *Cancer*. 1994;74:1030-44.
- Kaufman DG, Arnold JT. Stromal-epithelial interactions in normal and neoplastic development. In: Sirica AE, ed. Cellular and molecular pathogenesis. Philadelphia: Lippincott-Raven Publishers; 1996:403-31.
- Rubin H. Epigenetic nature of neoplastic transformation. In: Hodges GM, Rowlatt C, eds. Developmental biology and cancer. Boca Raton: CRC-Press; 1994:61-84.
- Weaver VM, Petersen OW, Wang F, et al. Reversion of the malignant phenotype of human breast cells in three-dimensional culture and in vivo by integrin blocking antibodies. *J Cell Biol*. 1997;137(1):231-45.
- Deng G, Lu Y, Zlotnikov G, Thor AD, Smith HS. Loss of heterozygosity in normal tissue adjacent to breast carcinomas. *Science*. 1996;274:2057-9.
- Heppner GH. Tumor cell societies. *J Natl Cancer Inst*. 1989;81(9):648-9.
- Heppner GH, Miller FR. The cellular basis of tumor progression. *Intl Rev Cytol*. 1998;177:1-56.
- Poste G, Greig R. On the genesis and regulation of cellular heterogeneity in malignant tumors. *Invasion Metastasis*. 1982;2:137-76.
- Heppner G. Cell-to-cell interaction in regulating diversity of neoplasms. *Semin Cancer Biol*. 1991;2:97-103.
- Heppner G. Cancer cell societies and tumor progression. *Stem Cells*. 1993;11:199-203.
- Prehn RT. The inhibition of tumor growth by tumor mass. *Cancer Res*. 1991;51:2-4.

69. Demicheli R, Retsky MW, Hrushesky WJ, Baum M, Gukas ID. The effects of surgery on tumor growth: a century of investigations. *Ann Oncol*. 2008;19(11):1821-8.
70. Heppner GH. Summation and synthesis: from the immunology point of view. In: Yang SS, Warner HR, editors. *The underlying molecular, cellular, and immunological factors in cancer*. New York: Plenum Press; 1993;315-20.
71. Ozen M, Multani AS, Kuniyasu H, Chung LW, von Eschenbach AC, Pathak S. Specific histologic and cytogenetic evidence for in vitro malignant transformation of murine host cells by three human prostate cancer cell lines. *Oncol Res*. 1997;9(8):433-8.
72. Pathak S, Nemeth MA, Multani AS, Thalmann GN, von Eschenbach AC, Chung LW. Can cancer cells transform normal host cells into malignant cells? *Br J Cancer*. 1997;76(9):1134-8.
73. Pathak S, Nemeth MA, Multani AS. Human tumor xenografts in nude mice are not always of human origin. A warning signal. *Cancer*. 1998;83(9):1891-2.
74. Goldenberg DM, Pavia RA. In vivo horizontal oncogenesis by a human tumor in nude mice. *Proc Natl Acad Sci*. 1982;79:2389-92.
75. Goldenberg DM, Pavia RA. Malignant potential of murine stromal cells after transplantation of human tumors into nude mice. *Science*. 1981;212:65-7.
76. Pierce GB, Dixon FJ. Testicular teratomas. I. Demonstration of teratogenesis by metamorphosis of multipotential cells. *Cancer*. 1959;12(3):573-83.
77. Pierce GB, Dixon FJ, Verney EL. Teratocarcinogenic and tissue-forming potentials of the cell types comprising neoplastic embryoid bodies. *Lab Invest*. 1960;9(6):583-602.
78. Pierce GB, Verney EL. An in vitro and in vivo study of differentiation in teratocarcinomas. *Cancer*. 1961;14:1017-29.
79. Pierce GB. On the boundary between development and neoplasia. An interview with Professor G. Barry Pierce [interview by Juan Arechaga]. *Int J Dev Biol*. 1993;37(1):5-16.
80. Nowak D, Stewart D, Koeffler HP. Differentiation therapy of leukemia: 3 decades of development. *Blood*. 2009;113(16):3655-65.
81. Mintz B, Illmensee K. Normal genetically mosaic mice produced from malignant teratocarcinoma cells. *Proc Natl Acad Sci*. 1975;72(9):3585-9.
82. Brinster RL. The effect of cells transferred into the mouse blastocyst on subsequent development. *J Exp Med*. 1974;140:1049-56.
83. Illmensee K, Mintz B. Totipotency and normal differentiation of single teratocarcinoma cells cloned by injection into blastocysts. *Proc Natl Acad Sci USA*. 1976;73(2):549-53.
84. Papaioannou VE, McBurney MW, Gardner RL, Evans MJ. Fate of teratocarcinoma cells injected into early mouse embryos. *Nature*. 1975;258:70-3.
85. Gootwine E, Webb CG, Sachs L. Participation of myeloid leukaemic cells injected into embryos in haematopoietic differentiation in adult mice. *Nature*. 1982;299:63-5.
86. Webb CG, Gootwine E, Sachs L. Developmental potential of myeloid leukemia cells injected into midgestation embryos. *Devel Biol*. 1984;101:221-4.
87. Wells RS, Miotto KA. Widespread inhibition of neuroblastoma cells in the 13- to 17-day-old mouse embryo. *Cancer Res*. 1986;46:1659-62.
88. Podesta AH, Mullins J, Pierce GB, Wells RS. The neurula stage mouse embryo in control of neuroblastoma. *Proc Natl Acad Sci*. 1984;81:7608-11.
89. Gerschenson M, Graves K, Carson SD, Wells RS, Pierce GB. Regulation of melanoma by the embryonic skin. *Proc Natl Acad Sci*. 1986;83:7307-10.
90. Kulesa PM, Kasemeier-Kulesa JC, Teddy JM, et al. Reprogramming metastatic melanoma cells to assume a neural crest cell-like phenotype in an embryonic microenvironment. *Proc Natl Acad Sci USA*. 2006;103(10):3752-7.
91. McKinnell RG, Deggs BA, Labat DD. Transplantation of pluripotent nuclei from triploid frog tumors. *Science*. 1969;165:394-6.
92. King TJ, DiBerardino MA. Transplantation of nuclei from the frog renal adenocarcinoma. I. Development of tumor nuclear-transplant embryos. *Ann N Y Acad Sci*. 1965;126:115-26.
93. DiBerardino MA, Mizell M, Hoffner NJ, Friesendorf DG. Frog larvae cloned from nuclei of pronephric adenocarcinoma. *Differentiation*. 1983;23:213-7.
94. McKinnell RG, Lust JM, Sauerbier W, et al. Genomic plasticity of the Lucke renal carcinoma: a review. *Int J Dev Biol*. 1993;37:213-9.
95. Li L, Connelly MC, Wetmore C, Curran T, Morgan JI. Mouse embryos cloned from brain tumors. *Cancer Res*. 2003;63(11):2733.
96. Hochedlinger K, Belloch R, Brennan C, et al. Reprogramming of a melanoma genome by nuclear transplantation. *Genes Devel*. 2004;18(15):1875-85.
97. Cooper M, Pinkus H. Intrauterine transplantation of rat basal cell carcinoma as a model for reversion of malignant to benign growth. *Cancer Res*. 1977;37:2544-7.
98. Coleman WB, Wennerberg AE, Smith GJ, Grisham JW. Regulation of the differentiation of diploid and some aneuploid rat liver epithelial (stemlike) cells by the hepatic microenvironment. *Am J Pathol*. 1993;142:1373-82.
99. McCullough KD, Coleman WB, Ricketts SL, Wilson JW, Smith GJ, Grisham JW. Plasticity of the neoplastic phenotype in vivo is regulated by epigenetic factors. *Proc Natl Acad Sci USA*. 1998;95(26):15333-8.
100. Farber E, Sarma DS. Hepatocarcinogenesis: A dynamic cellular perspective. *Lab Invest*. 1987;56(1):4-22.
101. Farber E, Rubin H. Cellular adaptation in the origin and development of cancer. *Cancer Res*. 1991;51:2751-61.
102. Pierce GB, Shikes R, Fink LM. *Cancer. A problem of developmental biology*. Englewood Cliffs, NJ: Prentice-Hall; 1978.
103. Pierce GB, Speers WC. Tumors as caricatures of the process of tissue renewal: Prospects for therapy by directing differentiation. *Cancer Res*. 1988;48:1996-2004.
104. Dvorak HF. Tumours: wounds that do not heal. Similarities between tumor stroma generation and wound healing. *N Engl J Med*. 1986;315:1650-9.
105. Domagk G. Die experimentelle Geschwulstforschung. *Handbuch der allgemeinen Pathologie*. 1956;6(3, Teil):242-367.
106. Tsonis PA. Regeneration in vertebrates. *Devel Biol*. 2000;221(2):273-84.
107. Gersch M. Zellentartung und Zellwucherung bei Regenwürmern nach Behandlung mit cancerogenen Kohlenwasserstoffen. *Archiv der Geschwulstforschung*. 1957;10(2):101-18.
108. Gersch M. Zellentartung und Zellwucherung bei wirbellosen Tieren. *Archiv der Geschwulstforschung*. 1951;3(1):1-18.
109. Seilern-Aspang F. Experimentelle Beiträge zur Frage der Zusammenhänge: Regenerationsfähigkeit—Geschwulstbildung. *Roux' Archiv für Entwicklungsmechanik*. 1960;152:491-516.
110. Okamoto M. Simultaneous demonstration of lens regeneration from dorsal iris and tumour production from ventral iris in the same newt eye after carcinogen administration. *Differentiation*. 1997;61(5):285-92.
111. Oviedo NJ, Beane WS. Regeneration: The origin of cancer or a possible cure? Amsterdam: Elsevier; 2009:557-64.
112. Seilern-Aspang F, Kratochwil K. Induction and differentiation of an epithelial tumour in the newt (*Triturus cristatus*). *J Embryol Exp Morphol*. 1962;10(3):337-56.
113. Kienle GS. Fever in cancer treatment: Coley's therapy and epidemiologic observations. *Glob Adv Health Med*. 2012;1(1):90-8.
114. Bischoff F, Bryson G. Carcinogenesis through solid state surfaces. *Prog Exp Tumor Res*. 1964;5:85-133.
115. Oppenheimer BS, Oppenheimer ET, Stout AP. Sarcomas induced in rats by implanting cellophane. *Proc Soc Exp Biol Med*. 1948;67:33-4.
116. Brand KG, Buoen LC, Johnson KH, Brand I. Etiological factors, stages, and the role of the foreign body in foreign body tumorigenesis: a review. *Cancer Res*. 1975;35:279-86.
117. Oppenheimer BS, Oppenheimer ET, Stout AP. Sarcomas induced in rodents by imbedding various plastic films. *Proc Soc Exp Biol & Med*. 1952;79:366-9.
118. Rubin H. Cancer as a dynamic developmental disorder. *Cancer Res*. 1985;45:2935-42.
119. Kitano H. Systems biology: a brief overview. *Science*. 2002;295(5560):1662-4.
120. Kitano H. Computational systems biology. *Nature*. 2002;420(6912):206-10.
121. Steiner R. *Goethes Weltanschauung*. 8 ed. Dornach: Rudolf Steiner Verlag; 1990.
122. Weiss PA. *The science of life*. Mount Kisco, New York: Futura Publishing Company; 1973.
123. Weiss PA. Das lebende System: Ein Beispiel für den Schichtendeterminismus. In: Koestler A, Smythies JR, editors. *Das neue Menschenbild. Die Revolutionierung der Wissenschaften vom Leben. Ein internationales Symposium*. Wien: Molden; 1967:13-70.
124. Drack M, Apfalter W, Pouvreau D. On the making of a system theory of life: Paul A Weiss and Ludwig von Bertalanffy's conceptual connection. *The Q Rev Biol*. 2007;82(4):349.
125. Ash MG, Woodward WR. Gestalt psychology in German culture, 1890-1967: holism and the quest for objectivity. Cambridge: Cambridge University Press; 1998.
126. Köhler W. Die Aufgabe der Gestaltpsychologie. Berlin, New York: Walter de Gruyter; 1971.
127. von Ehrenfels C. Über Gestaltqualitäten. *VjschrwissPh*. 1890;14.
128. Wertheimer M. Untersuchungen zur Lehre der Gestalt. Teil 1. *Psychol Forsch*. 1922;1:47-58.
129. Daston L, Galison P. *Objectivity*. New York: Zone Books; 2007.
130. Kienle GS, Kiene H. Clinical judgement and the medical profession. *J Eval Clin Pract*. 2011;17(4):621-7.
131. Sonnenschein C, Soto AM. The society of cells. *Cancer and control of cell proliferation*. 1 ed. New York: Springer-Verlag; 1999.
132. Smithers DW. On the nature of neoplasia in man. Edinburgh and London: E. & S. Livingstone Ltd; 1964.
133. Devitt JE. Breast cancer: Have we missed the forest because of the tree? *Lancet*. 1994;344:734-5.
134. Pierce GB, Cox Jr WF. Neoplasms as caricatures of tissue renewal. In: Saunders GF, editor. *Cell differentiation and neoplasia*. New York: Raven Press; 1978. p. 57-66.
135. Clark WH. The nature of cancer: Morphogenesis and progressive (self)-disorganization in neoplastic development. *Acta Oncol*. 1995;34(1):3-21.