

REVIEW

OPEN ACCESS

Full open access to this and thousands of other papers at <http://www.la-press.com>.

Promoter Methylation in Prostate Cancer and its Application for the Early Detection of Prostate Cancer Using Serum and Urine Samples

Hafiz Ahmed

Department of Biochemistry and Molecular Biology, Program in Oncology, Greenebaum Cancer Center, University of Maryland School of Medicine, Baltimore, MD 21201, USA. Email: ahmed@umbi.umd.edu

Abstract: Prostate cancer is the second most common cancer and the second leading cause of cancer death in men. However, prostate cancer can be effectively treated and cured, if it is diagnosed in its early stages when the tumor is still confined to the prostate. Combined with the digital rectal examination, the PSA test has been widely used to detect prostate cancer. But, the PSA screening method for early detection of prostate cancer is not reliable due to the high prevalence of false positive and false negative results. Epigenetic alterations including hypermethylation of gene promoters are believed to be the early events in neoplastic progression and thus these methylated genes can serve as biomarkers for the detection of cancer from clinical specimens. This review discusses DNA methylation of several gene promoters during prostate carcinogenesis and evaluates the usefulness of monitoring methylated DNA sequences, such as *GSTP1*, *RASSF1A*, *RARβ2* and galectin-3, for early detection of prostate cancer in tissue biopsies, serum and urine.

Keywords: prostate cancer, early detection, DNA methylation, *GSTP1*, *gal3*

Biomarkers in Cancer 2010:2 17–33

This article is available from <http://www.la-press.com>.

© the author(s), publisher and licensee Libertas Academica Ltd.

This is an open access article. Unrestricted non-commercial use is permitted provided the original work is properly cited.



Introduction

Prostate cancer (PCa) is the second most common cancer in men after skin cancer and the second leading cause of cancer death in men after lung cancer. In the United States, there are over 300,000 newly diagnosed cases each year, and about 40,000 patients die of the disease.¹ Approximately 90% of patients with advanced prostate cancer develop osseous metastases, which are difficult to eradicate. Patients with osseous metastases have a mean survival time of nine months to one year.¹ PCa can be effectively treated and cured, however, if it is diagnosed in its early stages (i.e. in stage I and II), when the tumor is still confined to the prostate. Combined with the digital rectal examination, the prostate specific antigen (PSA) test has been widely used to detect PCa (Cancer Facts, National Cancer Institute; http://cis.nci.nih.gov/fact/5_29.htm). This test measures the serum levels of PSA, an enzyme that is produced by the prostate and released into the bloodstream, reaching concentrations no more than 3–4 ng/ml in healthy individuals. PSA levels above that value are considered as an indication of possible PCa. However, PSA is specific for prostate tissues, but not for PCa. Various non-cancerous conditions such as benign prostatic hyperplasia (BPH), prostatitis, prostatic ischemia or infarction can cause elevated levels of PSA (http://cis.nci.nih.gov/fact/5_29.htm). Further, serum PSA levels are not always a sensitive indicator for PCa, as these may be normal despite the presence of the disease.² Thus, the PSA screening method for early detection of PCa is not reliable due to the high prevalence of false positive and false negative results (sensitivity 90%; specificity 10%–31%).³ Consequently, only 25 to 30 percent of men who have prostate biopsies based on elevated PSA levels are diagnosed with PCa.⁴ Recently, assays based on the detection of the specific serum marker EPCA-2 (sensitivity 94%, specificity 92%)⁵ and over-expression of telomerase (sensitivity 58%, specificity 100%), DD3 gene (sensitivity 67%, specificity 83%),³ and prostate cancer gene 3 (PCA3) (sensitivity 58%, specificity 72%)⁶ have been established and bear great promise for PCa diagnosis, and may reduce the number of unnecessary biopsies.

Epigenetic alterations, including hypermethylation of CpG islands in the gene promoters are believed to be early events in neoplastic progression.^{7–12} However, recent findings in prostate carcinogenesis

provide evidence that DNA hypomethylation changes occur subsequent to CpG island hypermethylation in later stages of carcinogenesis.¹³ Hypermethylation of tumor suppressor gene promoters contributes to their silencing during the neoplastic process.¹⁴ Thus, methylated gene promoters can serve as markers for the detection of cancer from clinical specimens such as tissue biopsies or body fluids.¹⁵ Compared to tests that measure cancer-related proteins or RNAs, tests that measure gene alterations at the DNA level have several advantages for the early detection of cancer. DNA is stable in many of the conditions under which clinical specimens are collected and stored. Many DNA modifications can be reliably detected by PCR-based techniques,^{16,17} meaning that very small amounts of DNA are needed for such tests. PCR amplification-based tests also allow detection of as few as one cancer cell (or genome copy) in a background of thousands of normal cells, thereby permitting detection of a cancer before it can be visualized by imaging or traditional pathology. Moreover, DNA alterations can be measured qualitatively, as well as quantitatively. Finally, assays based on the DNA alterations can be both diagnostic and prognostic. Therefore, methylated DNA sequences can form the basis of a sensitive and specific, robust and informative test for the detection of cancer.¹⁷

Alterations of DNA Methylation During Carcinogenesis: Hypomethylation in the Introns and Hypermethylation in the Promoter

DNA methylation refers to the covalent binding of a methyl group specifically to the carbon-5 position of cytosine residues of the dinucleotide CpG (Fig. 1). This is catalyzed by a family of enzymes, the DNA methyltransferases (DNMTs). Two types of DNA methylation alterations have been demonstrated in human cancers. The first refers to global hypomethylation in which the genomes of cancer cells show decreased methylation compared to normal cells.^{18–20} The hypomethylation is primarily due to the loss of methylation in repetitive elements and other non-transcribed regions of the genome. This genome-wide hypomethylation potentially leads to loss of imprinting, chromosomal instability, cellular hyperproliferation, and activation of oncogenes²¹ such as K-ras and PU.1.^{22–25}

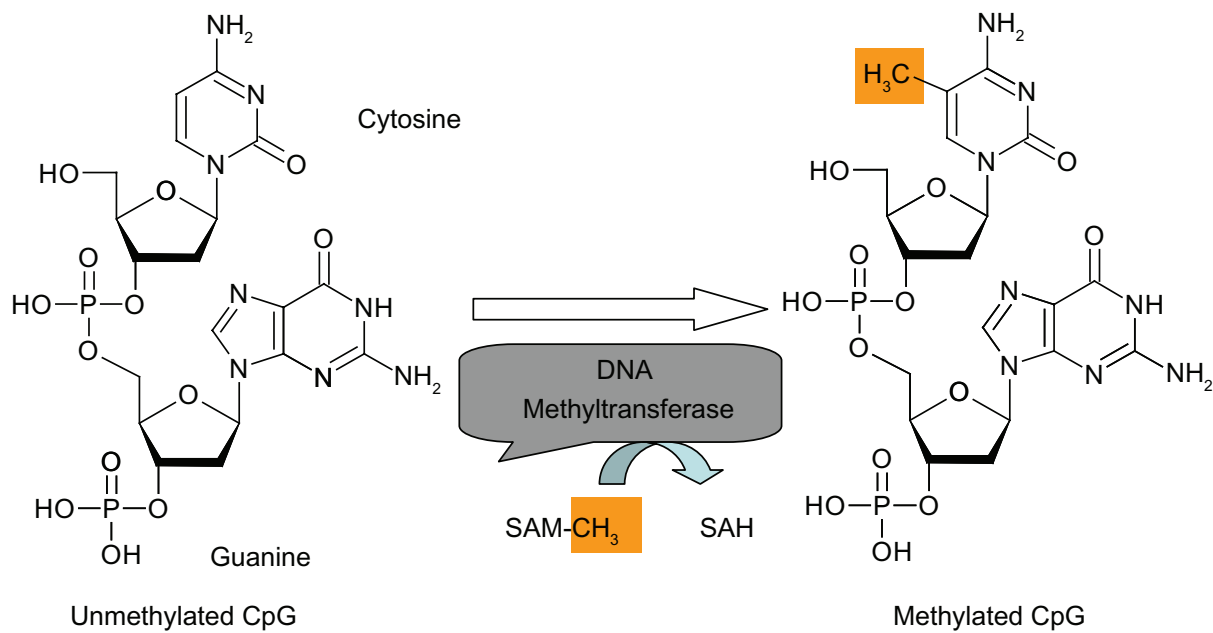


Figure 1. DNA methylation catalyzed by DNA methyltransferase. DNA methyltransferase transfers methyl group from S-adenosyl methionine (SAM-CH₃) to cytosine yielding S-adenosyl homocysteine (SAH) and 5-methylcytosine.

The second type of methylation alteration in cancer cells is the hypermethylation of CpG islands in the promoter regions of tumor suppressor and other regulatory genes that are normally unmethylated. The promoter regions of these genes may be inactivated by methylation, which silences their expression (Fig. 2). However, differential methylation is not a general mechanism for regulating gene expression, because most inactive promoters remained unmethylated.²⁶ It is thought that DNA methylation alters chromosome structure and defines regions for transcriptional regulation. Clusters of CpG sites are found dispersed around the genome and are referred to as CpG islands.²⁷ These islands are found in the promoter region of about 60% of genes, and in exons, introns, and repetitive elements of most genes. In normal cells, most CpG islands in the promoter regions are unmethylated whereas CpG islands in intronic regions and repetitive elements are heavily methylated, perhaps to help the cell identify regions for gene transcription.

Although the importance of CpG island methylation has been demonstrated in cancer, the mechanisms that lead to these changes in cancer are not yet understood. Of three members (DNMT1, DNMT3a, and DNMT3b) of the DNA methyltransferase family, DNMT1 is believed to be primarily involved in the maintenance of CpG methylation.^{28,29} However,

other studies suggest that DNMT3b, independently or in cooperation with DNMT1, also contributes to hypermethylation.^{30–32} The suppression of transcription by DNA methylation may occur by either direct inhibition³³ or indirect inhibition³⁴ of transcription factor binding. For the latter, a family of proteins known as methyl binding domain (MBD) proteins is believed to specifically bind DNA containing methylated CpG sites.³⁴ At least three of the five known members of this family (MeCP2, MBD2 and MBD3) have been shown to be associated with large protein complexes containing histone deacetylase (HDAC1 and HDAC2) and chromatin-remodeling (Sin3a and mi-2) activities.^{35,36} Histone deacetylase (HDAC1 and 2) and chromatin remodeling activities (Mi-2 and Sin3a) produce alterations in chromatin structure that make it refractory to transcriptional activation.³⁷ In addition to the large protein complexes, the MBD proteins may associate with several other complexes involved in transcriptional repression. Recently, MeCP2 was shown to interact with at least two other proteins, c-ski and N-CoR, known to be involved in transcriptional repression.³⁸ However, Ohm et al recently hypothesize that the stem cell-like chromatin pattern may predispose tumor suppressor genes to DNA hypermethylation and heritable gene silencing during tumor initiation and progression.³⁹

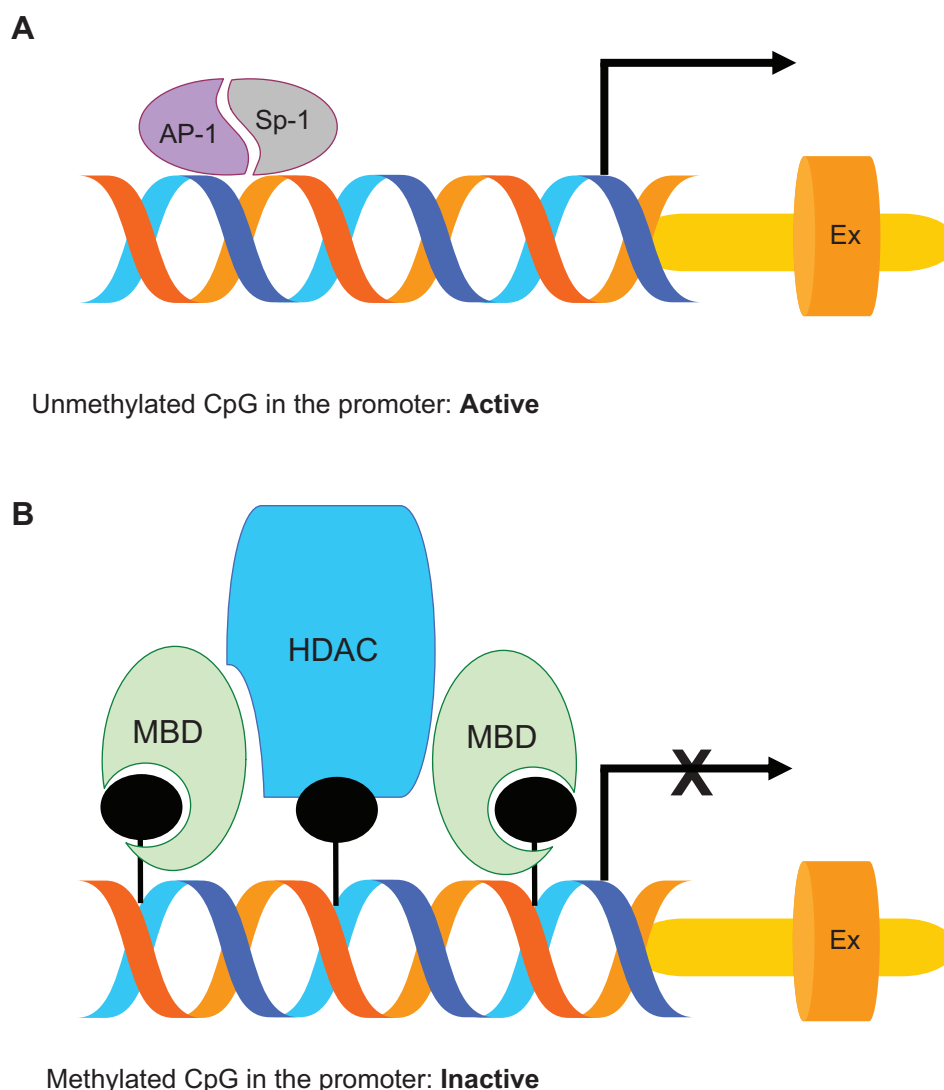


Figure 2. Simplified cartoon showing gene transcription by unmethylated promoter (A) and gene silencing by the methylated promoter (B). **A)** In normal prostate and pituitary tissues, tumor suppressor promoter is unmethylated and accessible to binding to the transcription factors such as AP-1 and Sp-1 for stimulation of gal3 transcription. **B)** In prostate cancer, promoters of several genes such as tumor suppressor, DNA repair gene, and gal3 are methylated and therefore bound by the methyl binding proteins (MBD) and histone deacetylase (HDAC). Thus the methylated promoter is not accessible to binding to the transcription factors and inactive.

As mentioned above, cancer cells exhibit two apparently opposing changes in the DNA methylation pattern: a decrease of DNA methylation in the intronic CpG islands and an increase of DNA methylation in the promoter CpG islands. Recent studies suggest that both changes may play important roles in the tumorigenic process. However, the increased methylation at the promoter CpG islands has been by far the most studied and has a much clearer role in carcinogenesis. Increased CpG island methylation can result in inactivation of many well-characterized tumor suppressor genes (e.g. *BRCA1*, breast cancer 1 gene) as well as inactivation of DNA repair genes, resulting in increased levels of genetic damage. The

most striking example is the pi isoform of glutathione S-transferase (*GSTP1*), which is involved in detoxification of potentially DNA-damaging electrophiles.⁴⁰

Hypermethylated Genes in Prostate Cancer

In prostate cancer, a large number of genes (e.g. DNA damage repair genes, tumor-suppressors, cell cycle control genes, cell adhesion molecules, and signal transduction genes) contribute to initiation and progression of the disease and expression of these genes is correlated with the pathological grade.^{12,15,41–45} Interestingly, expression of some of these genes is regulated by DNA methylation at their promoters.

In general, promoter hypermethylation is associated with the loss of expression of these genes. A spectrum of methods is available for DNA methylation. These include cytosine deamination PCR, semi-quantitative and quantitative methylation-specific PCR (MSP), differential methylation hybridization (DMH), restriction landmark genomic scanning (RLGS), single-nucleotide primer extension (SNuPE), pyrosequencing, and methylation microarray for large-scale genome analysis.^{15,46} However, MSP is a simple and sensitive method, and is the most commonly employed method for methylation analysis.¹⁵ Table 1 shows some common genes that are hypermethylated in the prostate cancer and are tested for the development of early detection. These genes participate in DNA damage repair (*GSTP1*, *MGMT*), cell adhesion (*CD44*, *EDNRB*, *ECADHERIN*, *APC*, *LGALS3*), cell growth, invasion and metastasis (*TIMP2*, *TIMP3*, *LGALS3*), apoptosis (DAPK), cell cycle control (*CDKN2A*, *CDKN1A*), signal transduction (*RASSF1A*), and hormonal responses (*AR*, *ER*, *RARβ2*).^{12,15,41–45}

The glutathione S transferases (GSTs) are a family of enzymes involved in protecting cells from DNA damage, and thence cancer initiation. GSTs carry out intracellular detoxification of xenobiotics and carcinogens by covalent bonding to glutathione via a thiol link.⁴⁷ In humans, six cytosolic isoforms of GST (alpha, mu, pi, sigma, theta, and omega) and one membrane isoform of GST have been described- of which the pi isoform (*GSTP1*) has been extensively studied.^{48,49} In prostate cancer, *GSTP1* is observed to be silenced by promoter methylation.^{17,39,50,51} *GSTP1* promoter methylation has been detected in cancerous as well as prostatic intraepithelial neoplasia (PIN) lesions, whereas it has been rarely detected in normal prostate or BPH tissues.^{40,52,53} Hypermethylation of *GSTP1* was also found in a subset of proliferative inflammatory atrophy (PIA) lesions, which are believed to be tumors precursors.⁵³

Another DNA repair gene O⁶-Methylguanine-DNA-Methyltransferase (*MGMT*) was found to be hypermethylated (moderate to high levels) in many cancers including prostate cancer.^{54,55} *MGMT* removes mutagenic and cytotoxic alkyl adducts from O⁶-guanine in DNA.⁵⁶ However, hypermethylation of this gene promoter results in a loss of function in various cancers including prostate cancer.^{55,57}

CD44, an integral membrane glycoprotein, plays a role in cell adhesion and cell-matrix interactions as a receptor for hyaluronic acid and osteopontin.⁵⁸ In prostate cancer, CD44, acts as a metastasis suppressor gene, and its down-regulation is associated with tumor progression and metastasis. Hypermethylation of CpG islands in the promoter region of CD44 results in decreased expression.^{59,60} In a recent study, methylation of CD44 was evaluated among men who develop biochemical PCa recurrence after receiving radical prostatectomy.⁶¹ The methylation profile of CD44 was found to be an independent predictor of biochemical recurrence (associated with 9-fold increased risk). This finding, if validated in larger studies, may identify patients with aggressive cancer.

The endothelin peptides consisting of three isoforms, ET-1, ET-2, and ET-3 have potent vasoconstrictive properties and are differentially expressed in various cells and tissues.⁶² Two receptors for endothelin peptides (ETA and ETB) have been identified in various cells and tissues. Belonging to a family of hyptohelical G-protein-coupled receptors, they are differentially expressed during prostate cancer progression and also differ in binding the endothelin isoforms.^{63,64} ETA binds to two isoforms ET-1 and ET-2 only, whereas ETB binds to all three isoforms ET-1, ET-2, and ET-3.⁶³ In prostate cancer, expression of ETA is increased, whereas expression of ETB is reduced.⁶⁵ Moreover, the ETB gene (*EDNRB*) is frequently methylated in prostate cancer samples, but to a less so in benign samples.^{66–68}

E-cadherin, a transmembrane glycoprotein and a member of the cadherin family of cell adhesion molecules, may function as a tumor suppressor gene in invasion and metastasis by mediating cell-cell adhesion via calcium-dependent interactions.⁶⁹ In prostate cancer, expression of E-cadherin is decreased during tumor progression and this decreased expression has been correlated with hypermethylation of the promoter in patients biopsies.^{70,71} However, in metastatic prostate cancer cells in bone, E-cadherin expression is increased.⁷² Interestingly, the promoter of E-cadherin gene (*CDH1*) is found unmethylated in the metastatic prostate cancer cells.⁷²

The adenomatous polyposis coli (APC) is a multifunctional protein that acts as a tumor suppressor gene in familial adenomatous polyposis.⁷³ It plays a role in the Wnt signaling pathway, cell migration, cell adhesion,

**Table 1.** Summary of genes whose promoters are frequently methylated in prostate cancer.

Gene	Function	Methylation frequency	Stage of methylation	Marker for early detection?	Refs.
<i>GSTP1</i>	Intracellular detoxification (DNA damage repair)	70% to 100% (63/69)	All stages, also PIN; negative in BPH	May be suitable	40, 52, 53
<i>MGMT</i>	Removal of alkyl adducts from O6-guanine (DNA damage repair)	0% to 75% (8/32)	NA	May not be suitable as methylation is rare in prostate cancer	54, 55
<i>CD44</i>	Tumor suppressor: metastasis	33% to 78% (31/40)	Early to advanced, also in normal	May not be suitable	59, 60
<i>EDNRB</i>	Tumor suppressor	38% to 83% (40/48)	Frequent in prostate cancer, also in BPH	May not be suitable	66–68
<i>CDH1</i>	Tumor suppressor: invasion and metastasis	33% to 70% (19/35)	Mostly in advanced stages	May not be suitable	70, 71
<i>APC</i>	Tumor suppressor: invasion	27% to 38% (21/83)	All stages including PIN	May be suitable	75, 76
<i>TIMP2</i>	Tumor suppressor: invasion	60% (25/42)	Low levels in tumor, also in BPH and normal	May not be suitable	82–84
<i>TIMP3</i>	Tumor suppressor: invasion	6% to 97% (114/118)	Low levels in tumor, also in BPH	May not be suitable	82–84
<i>DAPK</i>	Apoptosis	1% to 36% (27/95)	Prostate cancer, also BPH	May not be suitable	75, 82, 86
<i>RASSF1A</i>	Tumor suppressor: cell growth	53% to 100% (74/95)	Frequent in early stages	May be suitable	75, 86, 96, 98–100
<i>Cyclin D2</i>	Cell cycle regulator	32% (32/101)	Frequent at higher stages, also in normal	May not be suitable	90
<i>SFN</i>	Cell cycle regulator	40% to 100% (41/41)	Prostate cancer, also in BPH	May not be suitable	93, 94
<i>AR</i>	Hormone regulation	0% to 28% (3/38)	Early and advanced stages, but low methylation frequency	May not be suitable	104–106
<i>ERα</i>	Hormone regulation	19% to 95% (35/38)	Early stages (high), metastatic (low), also in BPH	May not be suitable	106, 110–113
<i>ERβ</i>	Hormone regulation	20% to 100% (30/38)	Early stages (high), metastatic (low), also in BPH	May not be suitable	106, 110–113
<i>SSBP2</i>	Hematopoietic growth regulation	61% (54/88)	All stages, high methylation at advanced stages, negative in BPH	May be suitable	122
<i>SLC18A2</i>	Mono amine vesicular transporter	88% (15/17)	Negative in normal tissue, but positive in BPH (2 of 5 samples)	May not be suitable	124
<i>MCAM</i>	Melanoma adhesion	80% (70/88)	Higher methylation at advanced stages, also in BPH	May not be suitable	123
<i>RARβ2</i>	Tumor suppressor	30% to 97% (112/118)	primary and hormone-refractory tumors, also HGPIN, but not BPH	May be suitable	76, 117–120
<i>gal3 (LGALS3)</i>	Cell adhesion, tumor progression, anti-apoptotic	100% (18/18)	HGPIN, Stage I, II (heavy), Stage III, IV (light)	May be suitable	126, 127

Abbreviation: NA, not available.

and mitosis.⁷⁴ In prostate cancer development, *APC* hypermethylation has been observed in early cancer stages and in more than 30% of PIN samples.^{75,76} The methylation frequency becomes higher as the disease progresses.^{75,77} However, hypermethylation of the *APC* promoter was also observed in BPH tissues.⁷⁸

Tissue inhibitors of metalloproteinases (TIMPs) are known to control the activity of matrix metalloproteinases (MMPs)⁷⁹ in several biological processes such as cell growth, apoptosis, invasion, metastasis and angiogenesis.^{80,81} Four members of TIMPs have been identified and are known to be down-regulated in prostate cancer.^{82,83} Down-regulation of TIMP proteins is associated with hypermethylation of the corresponding gene promoters.⁸⁴ In particular, low-level methylation of *TIMP2* and *TIMP3* promoters has been detected in prostate carcinoma as well as in BPH.^{82–84}

Death-associated protein kinase (DAPK), a member of the pro-apoptotic calcium regulated serine/threonine kinases, is expressed in all tissues.⁸⁵ Its inactivation leads to the loss of this important apoptotic pathway. Although different mechanisms may affect *DAPK* inactivation in cancer, it has been shown that aberrant methylation is mainly responsible for silencing of the *DAPK* gene; inactivation of *DAPK* by promoter methylation has been observed in prostate cancer and BPH samples, but not in PIN samples.^{75,82,86}

Cell cycle genes such as retinoblastoma protein (RB), cyclins, cyclin dependent kinases (CDKs), and CDK inhibitors (CDKIs) are very important in regulation of the cell cycle. In cancer, the efficacy of cell cycle checkpoints is often affected, especially control of the G1/S transition.⁸⁷ CDKIs are negative regulators of the cell cycle and considered to be tumor suppressor genes. CDKIs are categorized into two families, the INK4 family and the CIP/KIP (kinase inhibitor protein) family. The INK4 family is composed of four members CDKN2A or p16, CDKN2B or p15, CDKN2C or p18, and CDKN2D or p19.⁸⁸ The CIP/KIP family includes CDKN1A or p21, CDKN1B or p27, and CDKN1C or p57.⁸⁹ While the INK4 family specifically inhibits CDKs 4 and 6, the CIP/KIP family inhibits most CDKs.^{88,89}

In prostate cancer, cell cycle checkpoint genes can be inactivated by a number of mechanisms such as deletion, point mutation, and hypermethylation.

For example, cyclin D2 promoter methylation has been detected in prostate cancer and correlated with disease progression.⁹⁰ However, other cell cycle genes such as *p21* and *p27* are rarely methylated in prostate tumors.^{91,92} Decreased expression of another negative cell cycle regulator 14-3-3sigma (SFN) due to promoter methylation has been detected in many cancers including prostate tumor and BPH.^{93,94} Interestingly, in prostate cancer tissues, *p16* methylation has been frequently detected in exon 2 rather than in the promoter.⁵⁴

RAS proteins are involved in extra-cellular signal transduction and regulate cell growth, survival and differentiation.⁹⁵ A new family of genes encoding RAS-binding proteins, RAS association domain family 1 gene (*RASSF1*), has been identified as a tumor suppressor in many carcinomas.⁹⁶ The *RASSF1* gene produces two predominant transcripts, *RASSF1A* and *RASSF1C*, that are regulated by distinct CpG promoter elements.⁹⁷ These transcripts are present in normal human tissues, but *RASSF1A* has been found to be inactivated in some prostate and other cancers.^{96,98,99} Inactivation of *RASSF1A* at different stages of prostate cancer development is correlated with *RASSF1A* promoter methylation.^{75,86,100}

Androgens such as testosterone and 5 α -dihydrotestosterone are the main steroid hormones in the prostate and act through the androgen receptor (AR).¹⁰¹ The expression of the AR gene and androgen dependence is consistent with the early stages of prostate cancer.^{102,103} However, AR expression and androgen dependency is lost in the terminal stages of metastatic prostate cancer and the loss of AR expression appears to be regulated by DNA methylation in its promoter.^{104–106} Moreover, methylation appears to be more prevalent in hormone-refractory tumors than in primary tumors.¹⁰⁵

Estrogens are believed to play an important role in prostate carcinogenesis by acting through intracellular receptors, ER- α and ER- β .^{107,108} These receptors are expressed in a cell and tissue specific manner, and involved in the regulation of the normal function of reproductive tissues.¹⁰⁹ However, several studies have reported the loss or down-regulation of these receptors during prostate cancer development^{110,111} and the DNA methylation in their promoters has been associated with decreased or loss of expression of these two genes in prostate cancer.^{106,112} Moreover, a high



frequency of methylation in the promoter region of the ER- β has been observed at the early stages of the disease, whereas methylation declined in metastatic tumors.¹¹² Promoter methylation of ER- α and ER- β in BPH has also been reported to a lesser extent than in prostate cancer tumors.^{112,113}

RAR β 2, an isoform of the β -subtype retinoic acid receptor, is expressed in most tissues and acts as a tumor suppressor gene.^{114–116} In prostate cancer, expression of *RAR β 2* is decreased or lost and this loss of expression is found associated with methylation in the promoter region.⁷⁶ Methylation of *RAR β 2* in the promoter region has been frequently detected in PIN (low level), primary tumors, and hormone-refractory tumors (high level), but not in BPH and normal prostate.^{117–120}

Single-stranded DNA-binding protein 2 (*SSBP2*), a novel regulator of hematopoietic growth and differentiation,¹²¹ has recently been shown to be hypermethylated in prostate cancer.¹²² In a quantitative MSP assay, the *SSBP2* promoter was hypermethylated in 61.4% of prostate cancer cases. In PIN tissues, *SSBP2* showed intermediate hypermethylation (30%), but no methylation in BPH.¹²² Patients with tumors staging higher than pT3b (100%, 8 of 8) were found to be positive, indicating that *SSBP2* hypermethylation is associated with advanced tumor stage in prostate cancer.

The melanoma cell adhesion molecule (*MCAM*) gene promoter was recently found hypermethylated in prostate cancer (80%, 70/88) by quantitative MSP assay.¹²³ The *MCAM* promoter showed intermediate methylation in PIN (23%) and low methylation in BPH tissues (12.5). Like *SSBP2*, *MCAM* promoter methylation was directly correlated with tumor stage (pT3 + pT4) ($P = 0.001$) in primary prostate carcinoma.

The vesicular monoamine transporter 2 gene, *SLC18A2* was recently identified as a new target gene for CpG island hypermethylation in prostate adenocarcinoma.¹²⁴ *SLC18A2* is an integral membrane protein of secretory vesicles, predominantly expressed in neurons and neuroendocrine cells, where it transports monoamines such as dopamine, serotonin, and histamine from the cytosol into vesicles for storage and/or exocytotic release.¹²⁵ *SLC18A2* hypermethylation was detected in 15 of 17 (88%) of prostate cancers examined. Methylation of *SLC18A2* was very minimal in

4 of 4 adjacent nonmalignant prostate glands and in 3 of 5 BPH samples, whereas the remaining 2 BPH samples had dense hypermethylation.¹²⁴

The galectin-3 gene (*LGALS3*), a member of the galectin family, has recently been found to be hypermethylated in prostate adenocarcinoma.^{126–128} Galectins, a family of β -galactoside-binding lectins, are multifunctional proteins involved in a variety of biological processes such as growth development, immune functions, apoptosis, and cancer metastasis.^{129–131} Our studies and those of others indicate that galectins are transcriptionally regulated by DNA methylation.^{126,132} Gal3 was found strongly expressed in normal, BPH, and high grade PIN (HGPIN) tissues, whereas expression of gal3 was found decreased in prostate adenocarcinoma.^{127,133,134} By bisulfite sequencing of multiple prostate cancer specimens, the gal3 promoter of stage II tumors was seen to be heavily methylated throughout its entire length, but the gal3 promoter of stage III and IV tumors was lightly methylated. Whereas gal3 promoter in stage III showed few methylation sites, mostly between –199 to –252 nt, the gal3 promoter from stage IV tumor specimens was methylated between –112 to –227 nt. In stage I prostate cancer, however, both light and heavy methylation is evident in the gal3 promoter. In multiple normal prostate and BPH samples, the gal3 promoter was almost unmethylated. Overall, results indicated that the decreased expression of gal3 in tumor prostate is associated with the hypermethylation of its promoter.

Methylated Genes Suitable for Early Detection of Prostate Cancer

Although many genes are observed to be methylated in prostate cancer, a few genes have been investigated as targets for early detection (Table 2). Most have insufficient methylation frequency to provide the needed sensitivity, while other methylated genes are also present in the BPH, making them non-specific. The most suitable gene appears to be *GSTP1*, which is also the best studied in this regard. *GSTP1* promoter hypermethylation constitutes an ideal DNA-based biomarker for prostate cancer because it is present in up to 90% of prostatic cancer tissues and in 2/3 of high grade prostatic intraepithelial neoplasia (HGPIN) but not or rarely present in BPH tissue.^{17,135–138} Other genes are

Table 2. Methylated genes used for early detection of prostate cancer from biopsy and biological fluid specimens.

Gene/Gene cohort	Specimen	Sensitivity %	Specificity %	Refs.
<i>GSTP1</i>	Biopsy	91 (10/11)	100	52
<i>GSTP1</i>	Biopsy	73 (11/15)	100	141
<i>GSTP1</i>	Biopsy	75 (46/61)	100	142
<i>GSTP1, RARβ2, APC, TIG1</i>	Biopsy	97 (59/61)	100	144
<i>GSTP1</i>	Biopsy washing	100 (10/10)	100	143
<i>GSTP1</i>	Ejaculate	44 (4/9)	NA	139
<i>GSTP1</i>	Ejaculate	50 (4/8)	100	140
<i>GSTP1</i>	Serum	72 (23/32)	100	140
<i>GSTP1, PTGS2, Reprimo, TIG1</i>	Serum	42–47	92	148
<i>GSTP1, RASSF1, RARβ2</i>	Serum	28 (24/83)	100	149
<i>GSTP1</i>	Urine	27 (6/22)	100	145
<i>GSTP1</i>	Urine post massage	36 (4/11)	100	140
<i>GSTP1</i>	Urine post massage	73 (29/40)	98	152
<i>GSTP1</i>	Urine post biopsy	39 (7/18)	NA	151
<i>GSTP1, APC, EDNRB</i>	Urine post biopsy	71 (12/17)	NA	153
<i>GSTP1, INK4α, ARF, MGMT</i>	Urine	87 (45/52)	100	154
<i>GSTP1, INK4α, ARF, MGMT, RARβ2, TIMP3, CDH1, RASSF1A, APC</i>	Urine	100 (52/52) (positive for at least one gene)	<100	154
<i>GSTP1, RARβ2, APC, RASSF1A</i>	Urine post massage	86	89	86
<i>GSTP1, RASSF1A, ECDH1, APC, DAPK, MGMT, p14, p16, RARβ2, TIMP3</i>	Urine post massage	93 (positive for at least one gene)	NA	86
<i>GSTP1, RARβ2, APC</i>	Urine	55	80	120
<i>GSTP1, gal3</i>	Biopsy	96 (26/27)	100	127
<i>GSTP1, gal3</i>	Serum	100 (4/4)	100	127
<i>GSTP1, gal3</i>	Urine	100 (22/22)	ND	Unpublished

Abbreviations: NA, not available; ND, not determined.

also used in combination with *GSTP1* in multiple-gene cohort assays. Using ejaculates, Suh et al first reported the presence of methylated *GSTP1* in 4 out of 9 patients with prostate cancer.¹³⁹ Later, Goessl et al found methylation in the *GSTP1* promoter in 72% (23/32) of sera, in 50% (4/8) of ejaculates, and in 36% (4/11) of urine samples from patients with prostate cancer, but none in any body fluid from 26 control patients with BPH.¹⁴⁰ A qMSP (quantitative methylation specific PCR) study by Jeronimo et al reported the highest sensitivity (90.9%) and

specificity (100%).⁵² By measuring the relative level of methylated *GSTP1* DNA to *MYOD1* (i.e. ratio of *GSTP1* to *myoD1* methylation) in sextant prostate biopsy samples from 21 patients with elevated PSA levels, the authors correctly predicted the histological diagnosis of prostate cancer in 90.9% (10/11) of the biopsies from patients with prostate cancer and confirmed negative prostate cancer in all 10 patients whose biopsy displayed no evidence of cancer. A subsequent analysis of *GSTP1* methylation further demonstrated the ability of qMSP to detect tiny



cancer foci in a large background of normal tissue.¹⁴¹ Harden et al compared the results of blinded histological review of sextant biopsy samples from 72 excised prostates with those obtained from *GSTP1* qMSP.¹⁴² Histology alone detected prostate carcinoma with 64% sensitivity and 100% specificity, whereas the combination of histology and *GSTP1* qMSP detected prostate carcinoma with 75% (46/61) sensitivity and 100% specificity. Another study using *GSTP1* promoter methylation on washings of needle biopsies from patients accurately detected prostate cancer (10 out of 10).¹⁴³ One advantage of this approach is that methylation analysis is performed on cells that accumulate in the needle during biopsy washings and the procedure does not impede routine histopathological assessment of the biopsy tissue.¹⁴³ However, the bottleneck of this approach is that several biopsies of an individual patient are needed for the test.¹⁴³ Other genes that are useful for early detection for prostate cancer include *RASSF1A*, *RAR β 2*, *APC*, *AR* etc. (see Table 1), which are most often used in combination with *GSTP1*. For example, methylation analysis of a four-gene cohort (*GSTP1*, *RAR β 2*, *APC*, and *TIG1*) resulted in the detection of 59 of 61 prostate cancer cases with 100% specificity, a 33% improvement over histology alone.¹⁴⁴

The finding that the gal3 gene promoter is completely methylated in stage I and II PCa makes the gal3 gene (*LGALS3*) an ideal candidate for developing a methylation-specific PCR (MS-PCR) assay for early diagnosis of PCa.^{126,127} Because stage I and II tumors are still confined to the prostate gland, identification of these stages is very important for effective intervention and cure. As the gal3 promoter is also methylated in stage III and IV, but only lightly and only between nt positions -112 to -252, we designed primers covering -9 nt to +64 nt to specifically detect stage I and II PCa (Fig. 3).¹²⁷ Of 34 tissues (5 normal, 2 BPH, 11 stage I, 7 stage II, 7 stage III, and 2 stage IV) tested, gal3 MS-PCR was positive with all stage I and II tumor samples (100% sensitive) on a semi-quantitative MS-PCR assay.¹²⁷ As expected, the gal3 MS-PCR was negative for normal, BPH, stage III (except one), and stage IV samples. In order to detect stage III and IV PCa samples along with the stage I and II, another assay based on *GSTP1* promoter methylation has been added with the gal3 MS-PCR. The combined

MS-PCR assay (gal3 and *GSTP1*) detected 26 out of 27 prostate cancer tissues.¹²⁷

Early Detection of Prostate Cancer in the Biological Fluids such as Serum and Urine

Several studies suggest that prostate cancer can be detected in serum and urine.^{15,17,120,145} Identification of methylated DNA in urine would be a critical milestone in the development of a non-invasive diagnostic for early stages of prostate cancer. DNA passes into urine and blood through three main routes.¹⁴⁶ The first occurs when prostate cells are directly released into the urethra through prostatic ducts. DNA can also pass into urine by phagocytosis, in which macrophages engulf DNA from necrotic tumor tissue then the macrophages themselves appear in both urine and blood. Lastly, when cell proliferation is accelerated, cellular DNA content can overwhelm phagocytes and directly spill into circulation and urine.

The first study of body fluid-based detection involves the analysis of plasma samples of prostate cancer for the detection of *GSTP1* promoter hypermethylation. The *GSTP1* promoter was found hypermethylated in 72% (23/32) of PCa patients, but none of patients with BPH.^{140,147} To determine the usefulness of multiple markers in serum samples, Ellinger and colleagues recently performed qMSP to measure hypermethylation of CpG islands in *GSTP1*, *TIG1*, *PTGS2*, and *Reprimo*.¹⁴⁷ These specific genes have been implicated in the pathogenesis of prostate cancer, and hypermethylation of these genes has been identified in prostate cancer tissue. All four genes displayed higher methylation frequencies in tissues of PCa patients (42.3%, 9.5%, 2.4%, and 1.2%, respectively) compared to BPH patients (7.7%, 0%, 0%, and 0%, respectively) and healthy controls (all 0%).¹⁴⁸ Comparing serum DNA of PCa and BPH patients, hypermethylation of either gene was highly specific (92%) but less sensitive (42%–47%).¹⁴⁸ Moreover, hypermethylation of *GSTP1* in serum identified 4 patients with incidental prostate cancer recurrence.¹⁴⁸ These studies indicate that the detection of *GSTP1* promoter methylation may serve as an additional tool to identify PCa in those patients with a high suspicion of disease despite negative biopsies. Very recently, Sunami et al¹⁴⁹ assayed blood from 40 healthy individuals and 83 patients with varying stages of PCa using MS-PCR

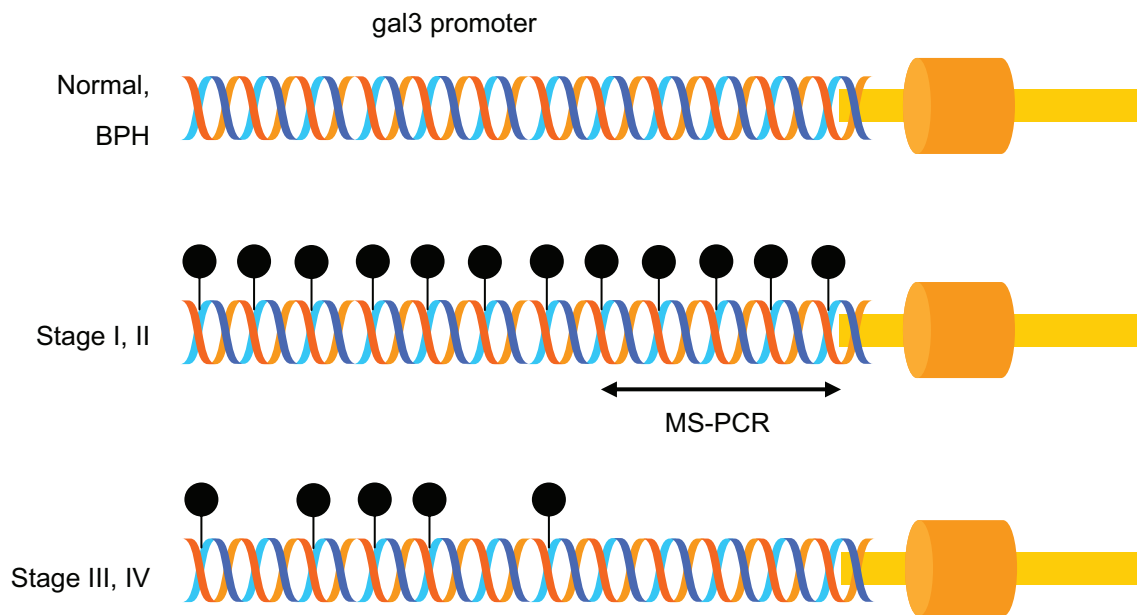


Figure 3. Schematic representation of MS-PCR. In normal and BPH prostate tissues, the gal3 promoter is unmethylated, whereas in stage I and II, it is methylated heavily. However, gal3 promoter is lightly methylated in stage III and IV. Stage-specific cytosine methylation of the gal3 promoter enabled the development of MS-PCR for the detection of stage I and II PCa.

of a 3-gene cohort (*GSTP1*, *RASSF1*, and *RARβ2*) and demonstrated detection of 28% cancer patients (24/83). However, a combination of the MS-PCR and PSA assays provided 89% sensitivity.

As described above, prostate cancers shed neoplastic cells or debris amenable to DNA analysis. Cairns et al¹⁴⁵ first analyzed voided urine samples from patients with prostate cancer and detected *GSTP1* hypermethylation in 27% of patients. The test was specific as patients with BPH were negative. Although *GSTP1* methylation was present in less than a third of PCa patient urine samples, the study showed for the first time that urine samples are amenable to DNA analysis. Later studies by Jeronimo et al¹⁵⁰ and Gonzalgo et al¹⁵¹ showed *GSTP1* methylation in 23% and 39%, respectively, of urine samples from PCa patients. In another study, post-prostatic massage urine samples were assayed for the presence of *GSTP1* promoter hypermethylation resulting 75% sensitivity and 98% specificity for prostate cancer in contrast to biopsies which had 91% sensitivity and 88% specificity. This study indicates that detection of increased *GSTP1* methylation in urine samples may improve the specificity of PSA.

Goessl et al¹⁵² demonstrated the utility of *GSTP1* methylation assays in urine sediments collected after prostate massage (sensitivity 73%; specificity 98%).

Additional markers could potentially increase assay sensitivity. Rogers et al¹⁵³ evaluated the concordance between post-digital rectal examination (DRE) and post-prostate biopsy urine samples using conventional MS-PCR analysis of 3 gene promoters (*GSTP1*, *APC*, and *EDNRB*) in patients with suspected or confirmed prostate cancer. Prostate cancer was detected on prostate biopsy in 12 of 17 patients (71%). Promoter methylation of *GSTP1* (24%), *APC* (12%) and *EDNRB* (66%) was detected in post-DRE urine specimens. In post-biopsy urine specimens, methylation frequency of *GSTP1*, *APC*, and *EDNRB* was 18%, 18%, and 77%, respectively. The concordance between post-DRE and post-biopsy urine samples was 94% for *GSTP1* and *APC*, and 82% for *EDNRB*, suggesting that urine collected after DRE may be used for molecular analysis with results similar to those in post-biopsy urine samples.

An additional study in which multiple gene analyses were evaluated is that of Hoque et al,¹⁵⁴ who monitored a 4-gene cohort (*GSTP1*, *CDKN2A* (formerly *p16*), *PSCD2* (formerly *ARF*), and *MGMT*) that could theoretically detect 87% of prostate cancers at 100% specificity. However, *GSTP1* alone demonstrated a sensitivity of 48% at a specificity of 100%. In the same article, Hoque et al reported qMSP analysis of promoter methylation of 9-gene cohort (*p16[INK4a]*,



p14[ARF], *MGMT*, *GSTP1*, *RARβ2*, *CDH1*, *TIMP3*, *RASSF1A*, and *APC*) in 52 urine sediment from PCa patients and 91 controls.¹⁵⁴ These 9 genes were chosen because their expression is frequently silenced by hypermethylation in prostate cancer.^{154,155} Promoter hypermethylation was identified in at least 1 of the 9 genes in all 52 prostate cancer patients.¹⁵⁴

Roupret et al⁸⁶ examined urine samples from 95 prostate cancer patients undergoing radical prostatectomy and from 38 control patients for aberrant methylation of 10 genes (*GSTP1*, *RASSF1A*, *ECDH1*, *APC*, *DAPK*, *MGMT*, *p14*, *p16*, *RARβ2*, and *TIMP3*). At least 1 gene was found hypermethylated in almost all cancer patients with a rare detection of *p14* (6.3%) and frequent detection of *GSTP1* (83.2%).⁸⁶ The 4-gene combination of *GSTP1*, *RASSF1A*, *RARβ2*, and *APC* best discriminated malignant from nonmalignant cases with a sensitivity of 86% and a specificity of 89%. However, these investigators used a 1-min prostate massage and bladder catheterization, which would hinder widespread adoption.

Vener et al¹²⁰ recently tested urine samples from 234 patients with PSA concentrations \geq 2.5 microg/L using 3 gene-cohort, *GSTP1*, *RARβ2*, and *APC*. In the first cohort of 121 patients, the authors demonstrated 55% sensitivity and 80% specificity; in the second cohort of 113 patients, they found a comparable sensitivity of 53% and specificity of 76%.

Our studies of gal3 MS-PCR in combination with *GSTP1* MS-PCR for a limited number of PCa patient serum¹²⁷ detected cancer in all sera (4/4), although more specimens should be tested for achieving a statistically significant dataset. Gal3 MS-PCR was also tested for a few urine samples from PCa patients and found positive in all specimens (22/22) (unpublished results).

Concluding Remarks

Several studies suggest that assays based on the detection of DNA methylation may provide better specificity and sensitivity than the PSA test. Furthermore, the methylated genes themselves may serve as promising biomarkers for early detection of prostate cancer. However, it should be emphasized that most published studies have been in small scale. Large scale studies will be necessary before any of these assays can be considered clinically useful. In addition to clinical validation, assays for methylated genes

must be robust, simple, sensitive, specific, and made available at affordable costs.

Regarding specificity of the assay, the most important consideration is to select a gene or genes whose promoter methylation is specific to prostate cancer. For example, *GSTP1* is methylated in 90% of prostate cancer, 30% of breast cancer, 25% of hepatic cancer, and less than 10% in bladder and renal cancers.¹⁷ Given that prostate cancer is a disease of males and that hepatic cancer is relatively rare in the Western world, methylation analysis of *GSTP1* from male specimens would provide specificity to prostate cancer around 90%. Some other points are important to consider in order to improving specificity. Promoters of tumor suppressor genes are not typically methylated in normal cells, but methylated in tumor cells. Conversely, other genes, such as *myoD1* or *GDF15*, show low levels of methylation in normal cells and high levels of methylation in tumor cells.^{156,157} Some genes such as maspin (*SERPINB5*) show tissue-specific methylation patterns in normal cells.¹⁵⁸ Moreover, some genes (e.g. *GSTP1*, *RARβ2*, *RASSF1A*) from normal cells of aging individuals are known to accumulate low-level promoters methylation.¹⁵⁹ Therefore, these genes should be investigated in age-matched negative controls to establish a quantitative cut-off point for the amount of methylation that would indicate the presence of cancer.

Regarding sensitivity, most studies of single genes or combinations of multiple genes did not reach a sensitivity of more than 75% and most importantly, these markers failed to detect early stages of prostate cancer.^{120,144} Therefore, a reliable marker for early detection (stage I, II) of prostate cancer is yet to be identified. We have reported heavy promoter methylation of gal3 gene (*LGALS3*) in early stages of prostate cancer and have demonstrated the usefulness of *LGALS3* promoter methylation for early detection of prostate cancer (stage I and II) in a small number of specimens (tissue, serum, and urine)¹²⁷ (also unpublished results). Therefore, it is reasonable to propose that the quantitative measurement of gal3 promoter methylation in combination with that of *GSTP1* should provide both sensitivity and specificity approaching 100%.

The specificity of gal3 MS-PCR to prostate cancer is in question as gal3 is also known to be aberrantly expressed in many cancers. In most cancers such

as lung, liver, gastric, head and neck, thyroid, and bladder cancers, expression of gal3 is increased,^{160–165} while expression is decreased in prostate, kidney, and pituitary cancers.^{127,132,133,166} Although the loss of gal3 expression in pituitary tumor is partially due to promoter methylation, these methylation sites are distinct from those we observe in PCa by gal3 MS-PCR. Thus, by judicious primer design to target only the PCa-relevant regions the assay should be insensitive to pituitary cancer. Although it remains to be seen if the gal3 promoter is heavily methylated in kidney cancers, gal3 MS-PCR in a several urine specimens from kidney and bladder cancers yielded negative results (unpublished data) underscoring its specificity to prostate cancer. However, non-specificity of the assay can be substantially reduced by combining the assay with the conventional PSA test as explained below. The PSA test is complicated by a large number of false positive results (specificity 10%–31%) rather than the false negative results (sensitivity 90%). However, the PSA false positive data are due to non-cancerous conditions of the prostate such as BPH, prostatitis, prostatic ischemia or infarction, as the PSA is specific for prostate tissues. Thus combining the gal3/*GSTP1* cohort assay with the PSA test would increase the diagnostic power of the assay by reducing the gal3/*GSTP1* false positive results. With this combined test, four scenarios are possible. Scenario 1: High PSA and positive result with our gal3/*GSTP1* cohort assay = Confirmed prostate cancer; Scenario 2: Low PSA and negative result with gal3/*GSTP1* assay = No prostate cancer; Scenario 3: High PSA and negative result with gal3/*GSTP1* assay = No prostate cancer; and Scenario 4: Low PSA and positive result with gal3/*GSTP1* assay = May not be prostate cancer but may be positive with other cancer. The result of this last scenario may also represent indolent prostate cancer, depending on the gal3 selectivity for the indolent cancer yet to be established.

The selectivity of the assay for indolent prostate cancer bears some consideration. Indolent cancer (associated with low Gleason grade and a low PSA value) rarely becomes symptomatic during a patient's lifetime, and patients with indolent cancer are offered active surveillance rather than treatment.^{167,168} However, a sensitive assay such as qMSP or "MethyLight" (detection limit 20 pg of DNA, equivalent to one cell or one genome copy) and early detection markers of

prostate cancer identify a considerable proportion of cancers that are indolent.¹⁶⁷ There is a measurable risk, however, of over-treatment of patients with indolent disease, which should be avoided because of potential adverse psychological and somatic side effects.¹⁶⁸ Therefore, if the assay turns out to be positive with indolent cancer (samples with low PSA, Scenario 4 as described above), further tests (such as sarcosine marker)¹⁶⁹ should be performed to confirm the indolence behavior of the cancer prior to any treatment.

The prospect for improved detection of PCa with the gal3/*GSTP1* combined MS-PCR assay is promising. However, optimization of this combined assay and its validation in large scale studies are necessary before this combined assay can be considered clinically useful.

Conflict of Interest Statement

The author is one of the two inventors on a patent related to the application of galectin-3 promoter hypermethylation for early detection of prostate cancer.

Acknowledgments

The author is very grateful to Dr. Thambi Dorai (Saint Vincent Catholic Medical Centers, New York, NY) and Dr. Eric Schott (University of Maryland Biotechnology Institute, Baltimore, MD) for critically reading the manuscript and helpful suggestions. The work carried out in the author's laboratory has been supported by the UMBI Presidential Proof of Concept Award and the National Institute of Health Grant RO3 CA133935-01.

References

1. Stewart DA, Cooper CR, Sikes RA. Changes in extracellular matrix (ECM) and ECM-associated proteins in the metastatic progression of prostate cancer. *Reprod Biol Endocrinol.* 2004;2:2–14.
2. Thompson IM, Pauler DK, Goodman PJ, Tangen CM, Lucia MS, et al. Prevalence of prostate cancer among men with a prostate-specific antigen level = 4.0 ng per milliliter. *New Eng J Med.* 2004;350:2239–46.
3. Hessels D, Verhaegh GW, Schalken JA, Witjes JA. Applicability of biomarkers in the early diagnosis of prostate cancer. *Expert Rev Mol Diagn.* 2004;4:513–26.
4. Keetch DW, Catalona WJ, Smith DS. Serial prostatic biopsies in men with persistently elevated serum prostate specific antigen values. *J Urol.* 1994;151:1571–4.
5. Leman ES, Cannon GW, Trock BJ, et al. EPCA-2: A highly specific serum marker for prostate cancer. *Urology.* 2007;69:714–20.
6. Marks LS, Fradet Y, Deras IL, et al. PCA3 molecular urine assay for prostate cancer in men undergoing repeat biopsy. *Urology.* 2007;69:532–5.
7. Hanahan D, Weinberg RA. The hallmarks of cancer. *Cell.* 2000;100:57–70.



8. Strathdee G, Brown R. Aberrant DNA methylation in cancer: potential clinical interventions. *Expert Rev Mol Med*. 2002;4:1–17.
9. Lund AH, van Lohuizen M. Epigenetics and cancer. *Genes Develop*. 2004;18:2315–35.
10. Ducasse M, Brown MA. Epigenetic aberrations and cancer. *Molecular Cancer*. 2006;5:60.
11. Shelton BP, Misso NL, Shaw OM, Arthaningtyas E, Bhoola KD. Epigenetic regulation of human epithelial cell cancers. *Curr Opin Mol Ther*. 2008;10:568–78.
12. Schulz WA, Hoffmann MJ. Epigenetic mechanisms in the biology of prostate cancer. *Semin Cancer Biol*. 2009;19:172–80.
13. Yegnasubramanian S, Haffner MC, Zhang Y, et al. DNA hypomethylation arises later in prostate cancer progression than CpG island hypermethylation and contributes to metastatic tumor heterogeneity. *Cancer Res*. 2008;68:8954–67.
14. Jones PA, Baylin SB. The fundamental role of epigenetic events in cancer. *Nat Rev Genet*. 2002;3:415–28.
15. Hoque MO. DNA methylation changes in prostate cancer: current developments and future clinical implementation. *Expert Rev Mol Diagn*. 2009;9:243–57.
16. Sidransky D. Nucleic acid-based methods for the detection of cancer. *Science*. 1997;278:1054–58.
17. Cairns P. Gene methylation and early detection of genitourinary cancer: the road ahead. *Nature Reviews Cancer*. 2007;7:531–43.
18. Ehrlich M. DNA methylation in cancer: too much, but also too little. *Oncogene*. 2002;21:5400–13.
19. Vucic EA, Brown CJ, Lam WL. Epigenetics of cancer progression. *Pharmacogenomics*. 2008;9:215–34.
20. Pogribny IP, Beland FA. DNA hypomethylation in the origin and pathogenesis of human diseases. *Cell Mol Life Sci*. 2009;66:2249–61.
21. Franco R, Schoneveld O, Georgakilas AG, Panayiotidis MI. Oxidative stress, DNA methylation and carcinogenesis. *Cancer Lett*. 2008;266:6–11.
22. Benbrahim-Tallaa L, Waterland RA, Styblo M, Achanzar WE, Webber MM, Waalkes MP. Molecular events associated with arsenic-induced malignant transformation of human prostatic epithelial cells: aberrant genomic DNA methylation and K-ras oncogene activation. *Toxicol Appl Pharmacol*. 2005;206:288–98.
23. Fan T, Schmidtmann A, Xi S, et al. DNA hypomethylation caused by Lsh deletion promotes erythroleukemia development. *Epigenetics*. 2008;3:134–42.
24. Kanai Y. Alterations of DNA methylation and clinicopathological diversity of human cancers. *Pathol Int*. 2008;58:544–58.
25. Nagarajan RP, Costello JF. Molecular epigenetics and genetics in neuro-oncology. *Neurotherapeutics*. 2009;6:436–46.
26. Weber M, Hellmann I, Stadler MB, et al. Distribution, silencing potential and evolutionary impact of promoter DNA methylation in the human genome. *Nat Genet*. 2007;39:457–66.
27. Illingworth RS, Bird AP. CpG islands—‘a rough guide’. *FEBS Lett*. 2009;583:1713–20.
28. Bestor TH. Activation of mammalian DNA methyltransferase by cleavage of a Zn binding regulatory domain. *Embo J*. 1992;11:2611–7.
29. Robert MF, Morin S, Beaulieu N, et al. DNMT1 is required to maintain CpG methylation and aberrant gene silencing in human cancer cells. *Nat Genet*. 2003;33:61–5.
30. El-Osta A. DNMT cooperativity—the developing links between methylation, chromatin structure and cancer. *Bioessays*. 2003;25:1071–84.
31. Benbrahim-Tallaa L, Waterland RA, Dill AL, Webber MM, Waalkes MP. Tumor suppressor gene inactivation during cadmium-induced malignant transformation of human prostate cells correlates with overexpression of de novo DNA methyltransferase. *Environ Health Perspect*. 2007;115:1454–9.
32. Roll JD, Rivenbark AG, Jones WD, Coleman WB. DNMT3b overexpression contributes to a hypermethylator phenotype in human breast cancer cell lines. *Mol Cancer*. 2008;7:15.
33. Tate PH, Bird AP. Effects of DNA methylation on DNA-binding proteins and gene expression. *Curr Opin Genet Dev*. 1993;3:226–31.
34. Hendrich B, Bird A. Identification and characterization of a family of mammalian methyl-CpG binding proteins. *Mol Cell Biol*. 1998;18:6538–47.
35. Zhang Y, et al. Analysis of the NuRD subunits reveals a histone deacetylase core complex and a connection with DNA methylation. *Genes Dev*. 1999;13:1924–35.
36. Nan X, et al. Transcriptional repression by the methyl-CpG-binding protein MeCP2 involves a histone deacetylase complex. *Nature*. 1998;393:386–9.
37. Tyler JK, Kadonaga JT. The “dark side” of chromatin remodeling: repressive effects on transcription. *Cell*. 1999;99:443–6.
38. Kokura K, et al. The Ski protein family is required for MeCP2-mediated transcriptional repression. *J Biol Chem*. 2001;276:34115–21.
39. Ohm JE, McGarvey KM, Yu X, et al. A stem cell-like chromatin pattern may predispose tumor suppressor genes to DNA hypermethylation and heritable silencing. *Nat Genet*. 2007;39:237–42.
40. Lee WH, et al. Cytidine methylation of regulatory sequences near the pi-class glutathione S-transferase gene accompanies human prostatic carcinogenesis. *Proc Natl Acad Sci U S A*. 1994;91:11733–7.
41. Schulz WA, Hatina J. Epigenetics of prostate cancer: beyond DNA methylation. *J Cell Mol Med*. 2006;10:100–25.
42. Diaw L, Woodson K, Gillespie JW. Prostate Cancer Epigenetics: A Review on gene regulation. *Gene Regulation Systems Biol*. 2007;1:313–25.
43. Li LC, Dahiya R. Epigenetics of prostate cancer. *Front Biosci*. 2007;12:3377–97.
44. Murphy TM, Perry AS, Lawler M. The emergence of DNA methylation as a key modulator of aberrant cell death in prostate cancer. *Endocr Relat Cancer*. 2008;15:11–25.
45. Nelson WG, De Marzo AM, Yegnasubramanian S. Epigenetic alterations in human prostate cancers. *Endocrinology*. 2009;150:3991–4002.
46. Estécio MR, Issa JP. Tackling the methylome: recent methodological advances in genome-wide methylation profiling. *Genome Med*. 2009;1:106.
47. Berhane K, Widersten M, Engström A, et al. Detoxication of base propenals and other alpha, beta-unsaturated aldehyde products of radical reactions and lipid peroxidation by human glutathione transferases. *Proc Natl Acad Sci U S A*. 1994;91:1480–4.
48. Henderson CJ, McLaren AW, Moffat GJ, Bacon EJ, Wolf CR. Pi-class glutathione S-transferase: regulation and function. *Chem Biol Interact*. 1998;111–112:69–82.
49. Wang L, Xu J, Ji C, et al. Cloning, expression and characterization of human glutathione S-transferase Omega 2. *Int J Mol Med*. 2005;16:19–27.
50. Cairns P, Esteller M, Herman JG, et al. Molecular detection of prostate cancer in urine by *GSTP1* hypermethylation. *Clin Cancer Res*. 2001;7:2727–30.
51. Meiers I, Shanks JH, Bostwick DG. Glutathione S-transferase pi (*GSTP1*) hypermethylation in prostate cancer: review. *Pathology*. 2007;39:299–304.
52. Jerónimo C, Usadel H, Henrique R, et al. Quantitation of *GSTP1* methylation in non-neoplastic prostatic tissue and organ-confined prostate adenocarcinoma. *J Natl Cancer Inst*. 2001;93:1747–52.
53. Nakayama M, Bennett CJ, Hicks JL, et al. Hypermethylation of the human glutathione S-transferase-pi gene (*GSTP1*) CpG island is present in a subset of proliferative inflammatory atrophy lesions but not in normal or hyperplastic epithelium of the prostate: a detailed study using laser-capture microdissection. *Am J Pathol*. 2003;163:923–33.
54. Konishi N, Nakamura M, Kishi M, et al. DNA hypermethylation status of multiple genes in prostate adenocarcinomas. *Jpn J Cancer Res*. 2002;93:767–73.
55. Soejima H, Zhao W, Mukai T. Epigenetic silencing of the *MGMT* gene in cancer. *Biochem Cell Biol*. 2005;83:429–37.
56. Esteller M, Herman JG. Generating mutations but providing chemosensitivity: the role of O6-methylguanine DNA methyltransferase in human cancer. *Oncogene*. 2004;23:1–8.
57. Kim JI, Suh JT, Choi KU, et al. Inactivation of O6-methylguanine-DNA methyltransferase in soft tissue sarcomas: association with K-ras mutations. *Hum Pathol*. 2009;40:934–41.
58. Naor D, Sionov RV, Shalom D. CD44: structure, function, and association with the malignant process. *Adv Cancer Res*. 1997;71:241–319.
59. Verkaik NS, Trapman J, Romijn JC, et al. Down-regulation of CD44 expression in human prostatic carcinoma cell lines is correlated with DNA hypermethylation. *Int J Cancer*. 1999;80:439–43.

60. Lou W, Krill D, Dhir R, et al. Methylation of the CD44 metastasis suppressor gene in human prostate cancer. *Cancer Res.* 1999;59:2329–31.
61. Woodson K, O'Reilly KJ, Ward DE, et al. CD44 and PTGS2 methylation are independent prognostic markers for biochemical recurrence among prostate cancer patients with clinically localized disease. *Epigenetics.* 2006;1:183–6.
62. Rubanyi GM, Polokoff MA. Endothelins: molecular biology, biochemistry, pharmacology, physiology, and pathophysiology. *Pharmacol Rev.* 1994;46:325–415.
63. Goto K, Hama H, Kasuya Y. Molecular pharmacology and pathophysiological significance of endothelin. *Jpn J Pharmacol.* 1996;72:261–90.
64. Carducci MA, Jimeno A. Targeting bone metastasis in prostate cancer with endothelin receptor antagonists. *Clin Cancer Res.* 2006;12(Pt 2): 6296s–300s.
65. Nelson JB, Chan-Tack K, Hedican SP, et al. Endothelin-1 production and decreased endothelin B receptor expression in advanced prostate cancer. *Cancer Res.* 1996;56:663–8.
66. Nelson JB, Lee WH, Nguyen SH, et al. Methylation of the 5' CpG island of the endothelin B receptor gene is common in human prostate cancer. *Cancer Res.* 1997;57:35–7.
67. Pao MM, Tsutsumi M, Liang G, et al. The endothelin receptor B (*EDNRB*) promoter displays heterogeneous, site specific methylation patterns in normal and tumor cells. *Hum Mol Genet.* 2001;10:903–10.
68. Jeronimo C, Henrique R, Campos PF, et al. Endothelin B receptor gene hypermethylation in prostate adenocarcinoma. *J Clin Pathol.* 2003;56:52–5.
69. Baranwal S, Alahari SK. Molecular mechanisms controlling E-cadherin expression in breast cancer. *Biochem Biophys Res Commun.* 2009; 384:6–11.
70. Graff JR, Herman JG, Lapidus RG, et al. E-cadherin expression is silenced by DNA hypermethylation in human breast and prostate carcinomas. *Cancer Res.* 1995;55:5195–9.
71. Li LC, Zhao H, Nakajima K, et al. Methylation of the E-cadherin gene promoter correlates with progression of prostate cancer. *J Urol.* 2001;166:705–9.
72. Saha B, Kaur P, Tsao-Wei D, et al. Unmethylated E-cadherin gene expression is significantly associated with metastatic human prostate cancer cells in bone. *Prostate.* 2008;68:1681–8.
73. Klarmann GJ, Decker A, Farrar WL. Epigenetic gene silencing in the Wnt pathway in breast cancer. *Epigenetics.* 2008;3:59–63.
74. Fearnhead NS, Britton MP, Bodmer WF. The ABC of APC. *Hum Mol Genet.* 2001;10:721–33.
75. Kang GH, Lee S, Lee HJ, et al. Aberrant CpG island hypermethylation of multiple genes in prostate cancer and prostatic intraepithelial neoplasia. *J Pathol.* 2004;202:233–40.
76. Costa VL, Henrique R, Jerónimo C. Epigenetic markers for molecular detection of prostate cancer. *Dis Markers.* 2007;23:31–41.
77. Richiardi L, Fiano V, Vizzini L, et al. Promoter methylation in APC, RUNX3, and GSTP1 and mortality in prostate cancer patients. *J Clin Oncol.* 2009;27:3161–8.
78. Ellinger J, Bastian PJ, Jurgan T, et al. CpG island hypermethylation at multiple gene sites in diagnosis and prognosis of prostate cancer. *Urology.* 2008;71:161–7.
79. Gomez DE, Alonso DF, Yoshiji H, et al. Tissue inhibitors of metalloproteinases: structure, regulation and biological functions. *Eur J Cell Biol.* 1997;74:111–22.
80. Fassina G, Ferrari N, Brigati C, et al. Tissue inhibitors of metalloproteinases: regulation and biological activities. *Clin Exp Metastasis.* 2000;18:111–20.
81. Lambert E, Dasse E, Haye B, et al. TIMPs as multifaceted proteins. *Crit Rev Oncol Hematol.* 2004;49:187–98.
82. Yegnasubramanian S, Kowalski J, Gonzalgo ML, et al. Hypermethylation of CpG islands in primary and metastatic human prostate cancer. *Cancer Res.* 2004;64:1975–86.
83. Jeronimo C, Henrique R, Hoque MO, et al. A quantitative promoter methylation profile of prostate cancer. *Clin Cancer Res.* 2004;10:8472–8.
84. Pulukuri SM, Patibandla S, Patel J, et al. Epigenetic inactivation of the tissue inhibitor of metalloproteinase-2 (TIMP-2) gene in human prostate tumors. *Oncogene.* 2007;26:5229–37.
85. Bialik S, Kimchi A. DAP-kinase as a target for drug design in cancer and diseases associated with accelerated cell death. *Semin Cancer Biol.* 2004;14:283–94.
86. Rouprêt M, Hupertan V, Yates DR, et al. Molecular detection of localized prostate cancer using quantitative methylation-specific PCR on urinary cells obtained following prostate massage. *Clin Cancer Res.* 2007;13:1720–5.
87. Peter M, Herskowitz I. Joining the complex: cyclin-dependent kinase inhibitory proteins and the cell cycle. *Cell.* 1994;79:181–4.
88. Ortega S, Malumbres M, Barbacid M. Cyclin D-dependent kinases, INK4 inhibitors and cancer. *Biochim Biophys Acta.* 2002;1602:73–87.
89. Sherr CJ, Roberts JM. Inhibitors of mammalian G1 cyclindependent kinases. *Genes Dev.* 1995;9:1149–63.
90. Padar A, Sathyanarayana UG, Suzuki M, et al. Inactivation of cyclin D2 gene in prostate cancers by aberrant promoter methylation. *Clin Cancer Res.* 2003;9:4730–4.
91. Kibel AS, Christopher M, Faith DA, et al. Methylation and mutational analysis of p27(kip1) in prostate carcinoma. *Prostate.* 2001;48:248–53.
92. Bott SR, Arya M, Kirby RS, et al. p21WAF1/CIP1 gene is inactivated in metastatic prostatic cancer cell lines by promoter methylation. *Prostate Cancer Prostatic Dis.* 2005;8:321–6.
93. Hermeking H. The 14-3-3 cancer connection. *Nat Rev Cancer.* 2003;3:931–43.
94. Lodygin D, Hermeking H. The role of epigenetic inactivation of 14-3-3sigma in human cancer. *Cell Res.* 2005;15:237–46.
95. Song MS, Song SJ, Ayad NG, et al. The tumour suppressor *RASSF1A* regulates mitosis by inhibiting the APC-Cdc20 complex. *Nat Cell Biol.* 2004;6:129–37.
96. Dammann R, Schagdarsurengin U, Seidel C, et al. The tumor suppressor *RASSF1A* in human carcinogenesis: an update. *Histol Histopathol.* 2005;20:645–63.
97. Dammann R, Schagdarsurengin U, Strunnikova M, et al. Epigenetic inactivation of the Ras-association domain family 1 (*RASSF1A*) gene and its function in human carcinogenesis. *Histol Histopathol.* 2003;18: 665–77.
98. Hesson LB, Cooper WN, Latif F. The role of *RASSF1A* methylation in cancer. *Dis Markers.* 2007;23:73–87.
99. Kawamoto K, Okino ST, Place RF, et al. Epigenetic modifications of *RASSF1A* gene through chromatin remodeling in prostate cancer. *Clin Cancer Res.* 2007;13:2541–8.
100. Aitchison A, Warren A, Neal D, et al. *RASSF1A* promoter methylation is frequently detected in both pre-malignant and non-malignant microdissected prostatic epithelial tissues. *Prostate.* 2007;67:638–44.
101. Heinlein CA, Chang C. Androgen receptor in prostate cancer. *Endocr Rev.* 2004;25:276–308.
102. Visakorpi T, Hyytinen E, Koivisto P, et al. In vivo amplification of the androgen receptor gene and progression of human prostate cancer. *Nat Genet.* 1995;9:401–6.
103. Golias Ch, Iliadis I, Peschos D, Charalabopoulos K. Amplification and co-regulators of androgen receptor gene in prostate cancer. *Exp Oncol.* 2009;31:3–8.
104. Jarrard DF, Kinoshita H, Shi Y, et al. Methylation of the androgen receptor promoter CpG island is associated with loss of androgen receptor expression in prostate cancer cells. *Cancer Res.* 1998;58:5310–4.
105. Kinoshita H, Shi Y, Sandefur C, et al. Methylation of the androgen receptor minimal promoter silences transcription in human prostate cancer. *Cancer Res.* 2000;60:3623–30.
106. Sasaki M, Tanaka Y, Perinchery G, et al. Methylation and inactivation of estrogen, progesterone, and androgen receptors in prostate cancer. *J Natl Cancer Inst.* 2002;94:384–90.
107. Carruba G, Miceli MD, Comito L, et al. Multiple estrogen function in human prostate cancer cells. *Ann N Y Acad Sci.* 1996;784:70–84.
108. Carruba G. Estrogens and mechanisms of prostate cancer progression. *Ann N Y Acad Sci.* 2006;1089:201–17.
109. Mosselman S, Polman J, Dijkema R. ER beta: identification and characterization of a novel human estrogen receptor. *FEBS Lett.* 1996;392:49–53.
110. Horvath LG, Henshall SM, Lee CS, et al. Frequent loss of estrogen receptor-beta expression in prostate cancer. *Cancer Res.* 2001;61:5331–5.



111. Bardin A, Boule N, Lazennec G, et al. Loss of ERbeta expression as a common step in estrogen-dependent tumor progression. *Endocr Relat Cancer*. 2004;11:537–51.
112. Nojima D, Li LC, Dharia A, et al. CpG hypermethylation of the promoter region inactivates the estrogen receptor-beta gene in patients with prostate carcinoma. *Cancer*. 2001;92:2076–83.
113. Li LC, Chui R, Nakajima K, et al. Frequent methylation of estrogen receptor in prostate cancer: correlation with tumor progression. *Cancer Res*. 2000;60:702–6.
114. Liu Y, Lee MO, Wang HG, et al. Retinoic acid receptor beta mediates the growth-inhibitory effect of retinoic acid by promoting apoptosis in human breast cancer cells. *Mol Cell Biol*. 1996;16:1138–49.
115. Ivanova T, Petrenko A, Gritsko T, et al. Methylation and silencing of the retinoic acid receptor-beta 2 gene in cervical cancer. *BMC Cancer*. 2002;2:4.
116. Fendri A, Masmoudi A, Khabir A, et al. Inactivation of *RASSF1A*, *RAR-beta2* and *DAP-kinase* by promoter methylation correlates with lymph node metastasis in nasopharyngeal carcinoma. *Cancer Biol Ther*. 2009;8:444–51.
117. Nakayama T, Watanabe M, Yamanaka M, et al. The role of epigenetic modifications in retinoic acid receptor beta2 gene expression in human prostate cancers. *Lab Invest*. 2001;81:1049–57.
118. Yamanaka M, Watanabe M, Yamada Y, et al. Altered methylation of multiple genes in carcinogenesis of the prostate. *Int J Cancer*. 2003;106:382–7.
119. Jeronimo C, Henrique R, Hoque MO, et al. Quantitative *RARbeta2* hypermethylation: a promising prostate cancer marker. *Clin Cancer Res*. 2004;10:4010–4.
120. Vener T, Derecho C, Baden J, et al. Development of a multiplexed urine assay for prostate cancer diagnosis. *Clin Chem*. 2008;54:874–82.
121. Liang H, Samanta S, Nagarajan L. *SSBP2*, a candidate tumor suppressor gene, induces growth arrest and differentiation of myeloid leukemia cells. *Oncogene*. 2005;24:2625–34.
122. Liu JW, Nagpal JK, Sun W, et al. *ssDNA-binding protein 2* is frequently hypermethylated and suppresses cell growth in human prostate cancer. *Clin Cancer Res*. 2008;14:3754–60.
123. Liu JW, Nagpal JK, Jeronimo C, et al. Hypermethylation of *MCAM* gene is associated with advanced tumor stage in prostate cancer. *Prostate*. 2008;68:418–26.
124. Sørensen KD, Wild PJ, Mortezaei A, et al. Genetic and epigenetic *SLC18A2* silencing in prostate cancer is an independent adverse predictor of biochemical recurrence after radical prostatectomy. *Clin Cancer Res*. 2009;15:1400–10.
125. Weihe E, Eiden LE. Chemical neuroanatomy of the vesicular amine transporters. *FASEB J*. 2000;14:2435–49.
126. Ahmed H, Banerjee PB, Vasta GR. Differential expression of galectins in normal, benign and malignant prostate epithelial cells: Silencing of galectin-3 expression in prostate cancer by its promoter methylation. *Biochem Biophys Res Commun*. 2007;358:241–6.
127. Ahmed H, Cappello F, Rodolico V, Vasta GR. Evidence of heavy methylation in the galectin-3 promoter in early stages of prostate adenocarcinoma: Development and validation of a methylated marker for early diagnosis of prostate cancer. *Trans Oncol*. 2009;2:146–56.
128. Ahmed H. Epigenetics of galectin-3-A novel regulatory mechanism of its transcription during carcinogenesis. In: *Experimental Medicine Review*, Vol. II (Editors: A. Gerbino, G. Zummo, G. Crescimanno), 2009 (In press).
129. Liu FT, Rabinovich GA. Galectins as modulators of tumour progression. *Nat Rev Cancer*. 2005;5:29–41.
130. Elola MT, Wolfenstein-Todel C, Troncoso MF, Vasta GR, Rabinovich GA. Galectins: matrixcellular glycan-binding proteins linking cell adhesion, migration, and survival. *Cell Mol Life Sci*. 2007;64:1679–700.
131. Vasta GR. Roles of galectins in infection. *Nat Rev Microbiol*. 2009;7:424–38.
132. Ruebel KH, Jin L, Qian X, et al. Effects of DNA methylation on galectin-3 expression in pituitary tumors. *Cancer Res*. 2005;65:1136–40.
133. Pacis RA, Pilat MJ, Pienta KJ, et al. Decreased galectin-3 expression in prostate cancer. *Prostate*. 2000;44:118–23.
134. van den Brule FA, Waltregny D, Liu FT, Castronovo V. Alteration of the cytoplasmic/nuclear expression pattern of galectin-3 correlates with prostate carcinoma progression. *Int J Cancer*. 2000;89:361–7.
135. Goessl C, Müller M, Straub B, Miller K. DNA alterations in body fluids as molecular tumor markers for urological malignancies. *Eur Urol*. 2002;41:668–76.
136. Brooks JD, Weinstein M, Lin X, et al. CG island methylation changes near the *GSTP1* gene in prostatic intraepithelial neoplasia. *Cancer Epidemiol Biomarkers Prev*. 1998;7:531–6.
137. Millar DS, Ow KK, Paul CL, Russell PJ, Molloy PL, Clark SJ. Detailed methylation analysis of the glutathione S-transferase pi (*GSTP1*) gene in prostate cancer. *Oncogene*. 1999;18:1313–24.
138. Duffy MJ, Napieralski R, Martens JW, et al; EORTC Pathobiology Group. Methylated genes as new cancer biomarkers. *Eur J Cancer*. 2009;45:335–46.
139. Suh CI, Shanafelt T, May DJ, et al. Comparison of telomerase activity and *GSTP1* promoter methylation in ejaculate as potential screening tests for prostate cancer. *Mol Cell Probes*. 2000;14:211–7.
140. Goessl C, Krause H, Müller M, et al. Fluorescent methylation-specific polymerase chain reaction for DNA-based detection of prostate cancer in bodily fluids. *Cancer Res*. 2000;60:5941–5.
141. Harden SV, Guo Z, Epstein JI, Sidransky D. Quantitative *GSTP1* methylation clearly distinguishes benign prostatic tissue and limited prostate adenocarcinoma. *J Urol*. 2003;169:1138–42.
142. Harden SV, Sanderson H, Goodman SN, et al. Quantitative *GSTP1* methylation and the detection of prostate adenocarcinoma in sextant biopsies. *J Natl Cancer Inst*. 2003;95:1634–7.
143. Goessl C, Müller M, Heicappell R, et al. Methylation-specific PCR for detection of neoplastic DNA in biopsy washings. *J Pathol*. 2002;196:331–4.
144. Tokumaru Y, Harden SV, Sun DI, Yamashita K, Epstein JI, Sidransky D. Optimal use of a panel of methylation markers with *GSTP1* hypermethylation in the diagnosis of prostate adenocarcinoma. *Clin Cancer Res*. 2004;10:5518–22.
145. Cairns P, Esteller M, Herman JG, et al. Molecular detection of prostate cancer in urine by *GSTP1* hypermethylation. *Clin Cancer Res*. 2001;7:2727–30.
146. Maxwell A, McCudden CR, Wians F. Recent advances in the detection of prostate cancer using epigenetic markers in commonly collected laboratory samples. *Lab Medicine*. 2009;40:171–8.
147. Goessl C, Müller M, Heicappell R, Krause H, Miller K. DNA-based detection of prostate cancer in blood, urine, and ejaculates. *Ann N Y Acad Sci*. 2001;945:51–8.
148. Ellinger J, Haan K, Heukamp LC, et al. CpG island hypermethylation in cell-free serum DNA identifies patients with localized prostate cancer. *Prostate*. 2008;68:42–9.
149. Sunami E, Shinozaki M, Higano CS, et al. Multimarker circulating DNA assay for assessing blood of prostate cancer patients. *Clin Chem*. 2009;55:559–67.
150. Jerónimo C, Usadel H, Henrique R, et al. Quantitative *GSTP1* hypermethylation in bodily fluids of patients with prostate cancer. *Urology*. 2002;60:1131–5.
151. Gonzalgo ML, Pavlovich CP, Lee SM, Nelson WG. Prostate cancer detection by *GSTP1* methylation analysis of postbiopsy urine specimens. *Clin Cancer Res*. 2003;9:2673–7.
152. Goessl C, Müller M, Heicappell R, et al. DNA-based detection of prostate cancer in urine after prostatic massage. *Urology*. 2001;58:335–8.
153. Rogers CG, Gonzalgo ML, Yan G, et al. High concordance of gene methylation in post-digital rectal examination and post-biopsy urine samples for prostate cancer detection. *J Urol*. 2006;176:2280–4.
154. Hoque MO, Topaloglu O, Begum S, et al. Quantitative methylation-specific polymerase chain reaction gene patterns in urine sediment distinguish prostate cancer patients from control subjects. *J Clin Oncol*. 2005;23:6569–75.
155. Topaloglu O, Hoque MO, Tokumaru Y, et al. Detection of promoter hypermethylation of multiple genes in the tumor and bronchoalveolar lavage of patients with lung cancer. *Clin Cancer Res*. 2004;10:2284–8.



156. Ibanez de Caceres I, Dulaimi E, Hoffman AM, Al-Saleem T, Uzzo RG, Cairns P. Identification of novel target genes by an epigenetic reactivation screen of renal cancer. *Cancer Res.* 2006;66:5021–8.
157. Kagan J, Srivastava S, Barker PE, Belinsky SA, Cairns P. Towards clinical application of methylated DNA sequences as cancer biomarkers: A joint NCI's EDNR and NIST workshop on standards, methods, assays, reagents and tools. *Cancer Res.* 2007;67:4545–9.
158. Futscher BW, Oshiro MM, Wozniak RJ, et al. Role for DNA methylation in the control of cell type specific maspin expression. *Nat Genet.* 2002;31:175–9.
159. Kwabi-Addo B, Chung W, Shen L, et al. Age-related DNA methylation changes in normal human prostate tissues. *Clin Cancer Res.* 2007;13:3796–802.
160. Hsu DK, Dowling CA, Jeng KC, Chen JT, Yang RY, Liu FT. Galectin-3 expression is induced in cirrhotic liver and hepatocellular carcinoma. *Int J Cancer.* 1999;81:519–26.
161. Miyazaki J, Hokari R, Kato S, et al. Increased expression of galectin-3 in primary gastric cancer and the metastatic lymph nodes. *Oncol Rep.* 2002;9:1307–12.
162. Yoshimura A, Gemma A, Hosoya Y, et al. Increased expression of the LGALS3 (galectin 3) gene in human non-small-cell lung cancer. *Genes Chromosomes Cancer.* 2003;37:159–64.
163. Sakaki M, Oka N, Nakanishi R, Yamaguchi K, Fukumori T, Kanayama HO. Serum level of galectin-3 in human bladder cancer. *J Med Invest.* 2008;55:127–32.
164. Saussez S, Glinioer D, Chantrain G, et al. Serum galectin-1 and galectin-3 levels in benign and malignant nodular thyroid disease. *Thyroid.* 2008;18:705–12.
165. Saussez S, Decaestecker C, Mahillon V, et al. Galectin-3 upregulation during tumor progression in head and neck cancer. *Laryngoscope.* 2008;118:1583–90.
166. Merseburger AS, Kramer MW, Hennenlotter J, et al. Loss of galectin-3 expression correlates with clear cell renal carcinoma progression and reduced survival. *World J Urol.* 2008;26:637–42.
167. Bangma CH, Roemeling S, Schröder FH. Overdiagnosis and overtreatment of early detected prostate cancer. *World J Urol.* 2007;25:3–9.
168. Bangma CH, Roobol MJ, Steyerberg EW. Predictive models in diagnosing indolent cancer. *Cancer.* 2009;115(13 Suppl):3100–6.
169. Sreekumar A, Poisson LM, Rajendiran TM, et al. Metabolomic profiles delineate potential role for sarcosine in prostate cancer progression. *Nature.* 2009;457:910–4.

Publish with Libertas Academica and every scientist working in your field can read your article

"I would like to say that this is the most author-friendly editing process I have experienced in over 150 publications. Thank you most sincerely."

"The communication between your staff and me has been terrific. Whenever progress is made with the manuscript, I receive notice. Quite honestly, I've never had such complete communication with a journal."

"LA is different, and hopefully represents a kind of scientific publication machinery that removes the hurdles from free flow of scientific thought."

Your paper will be:

- Available to your entire community free of charge
- Fairly and quickly peer reviewed
- Yours! You retain copyright

<http://www.la-press.com>