



Molecular Characterization of Carbapenem-Resistant *Klebsiella pneumoniae* Species Isolated From a Tertiary Hospital, Ankara, Turkey

Nevreste Celikbilek,^{1*} Ozlem Unaldi,² Fisun Kirca,¹ Aysegul Gozalan,¹ Ziya C Acikgoz,^{1,3} and Riza Durmaz^{2,3}

¹Ataturk Training and Research Hospital, Department of Medical Microbiology, Bilkent, Ankara, Turkey

²Public Health Institution of Turkey, National Molecular Microbiology Reference Laboratory, Sıhhiye, Ankara, Turkey

³Yildirim Beyazıt University, Faculty of Medicine, Department of Medical Microbiology, Bilkent, Ankara, Turkey

*Corresponding author: Nevreste Celikbilek, MD, Microbiologist (MD), Present address: Ataturk Training and Research Hospital, Medical Microbiology Laboratory, Bilkent, Ankara, Turkey. Tel: +90-5335151210, Fax: +90-3122912728, E-mail: nevrestec@yahoo.com

Received 2017 February 28; Revised 2017 May 31; Accepted 2017 June 25.

Abstract

Background: Carbapenem-resistant *Klebsiella pneumoniae* isolates can spread among the hospitalized patients and result in serious infections and increase mortality. Molecular studies provide useful information about resistance mechanisms and cross-transmission among the resistant isolates.

Objectives: The current study aimed at investigating phenotypic and molecular characteristics of the carbapenem resistance and clonal relationship among the *K. pneumoniae* isolates recovered from infection sites and rectal swabs of the patients hospitalized in a tertiary hospital.

Methods: Resistance to carbapenems was investigated by disc-diffusion and E-test methods. Modified Hodge test (MHT) and ethylenediaminetetraacetic acid (EDTA)-combine disc (ECD) methods were performed to determine carbapenemases. Carbapenemase-encoding genes including *blaOXA-48*, *blaNDM-1*, *blaKPC*, *blaIMP*, and *blaVIM* were investigated by multiplex polymerase chain reaction (PCR). Clonal relationship among the isolates was determined by the pulsed-field gel electrophoresis (PFGE).

Results: Carbapenem resistance was observed in 93 (5.8%) of the 1605 *K. pneumoniae* isolates. Majority (n = 66, 71%) of the resistant isolates were recovered from the patients in intensive care units (ICUs). Almost all carbapenem-resistant *K. pneumoniae* isolates (n = 91, 97.8%) were positive with MHT. Only 6 (6.5%) of the resistant isolates were positive with ECD method. The *blaOXA-48* and *blaNDM-1* were found in 90.3% (n = 84) and 6.5% (n = 6) of the resistant isolates, respectively. The pulsed-field gel electrophoresis yielded 55 different pulsotypes. Fifteen pulsotypes were identified as clusters with ≥ 2 isolates and a clustering rate of 57%. Based on the similarity coefficient higher than 85%, a total of 75 (80.6%) isolates were clonally related to each other.

Conclusions: The high rate of carbapenem resistance and 80.6% clonal relationship between the isolates collected in a 3-year period indicated a serious potential threat for the hospital-acquired infections and pointed longtime cross-contamination.

Keywords: Carbapenemase, Pulse-field Gel Electrophoresis, Multiplex Polymerase Chain Reaction, *Klebsiella pneumoniae*

1. Background

Klebsiella species are Gram-negative rods in Enterobacteriaceae family. They can cause different types of infections, such as pneumonia, bloodstream infection, wound or surgical site infections, meningitides, and urinary tract infections (1, 2). *Klebsiella* spp. has developed resistance to many antibiotics including carbapenems. Carbapenem-resistant *K. pneumoniae* is the most common species in this genus and it can cause serious infections in healthcare setting and increase mortality rates (1). The recent emergence and dissemination of this resistant species is frequently reported worldwide (3-7). The main reason for car-

bapenem resistance is the production of carbapenemases with or without high level AmpC or extended-spectrum beta-lactamase (ESBL) production and the loss of porin channel (8, 9).

Carbapenemases are beta-lactamases that hydrolyze penicillins, usually cephalosporins and carbapenems at different levels and monobactams except metallo-beta-lactamases (MBL) (3). The most commonly reported carbapenemases are class A (serine carbapenemases, such as *K. pneumoniae* carbapenemase (KPC), class B (MBLs, such as New Delhi MBL (NDM), Verona integron-encoded MBL (VIM), and imipenemase (IMP), and class D (OXA carbapenemase such as *blaOXA-48* (3, 10). *Klebsiella pneumo-*

niae carbapenemase enzymes hydrolyze all beta-lactams and are partially inhibited by clavulanic acid, tazobactam, and boronic acid. Metallo-beta-lactamases do not hydrolyze aztreonam and their activity is not inhibited by clavulanic acid, tazobactam, and boronic acid, but they can be inhibited by zinc chelators such as ethylenediaminetetraacetic acid (EDTA). On the other hand, *bla*OXA-48 type enzymes hydrolyze aminopenicillins, ureidopenicillins, and carbapenems, but not significantly hydrolyze the broad-spectrum cephalosporins. Also, they are not inhibited by clavulanic acid, tazobactam, and boronic acid, but their activity is inhibited by NaCl in vitro (11).

Clinical and laboratory standards institute (CLSI) suggests the use of ertapenem as a screening antibiotic and modified Hodge test (MHT) as a confirmatory phenotypic test to detect the carbapenemases (12). Boronic acid and EDTA double or combined disc methods are performed to detect MBLs. Polymerase chain reaction (PCR) is a commonly used method to detect *bla* genes of carbapenemases (13).

Molecular typing methods determine the clonal relationships between the microorganisms and provide information about epidemiologic data such as the source and transmission routes of the infections, confirmation of outbreaks, and they help to evaluate hospital infection control measures (14, 15). Several molecular methods including plasmid profile analysis, restriction endonuclease analysis (REA) of chromosomal DNA, restriction fragment length polymorphism (RFLPs), random-amplified PCR, ribotyping, pulsed-field gel electrophoresis (PFGE), DNA sequencing, and more recently whole genome sequencing (WGS) are used to assess clonal relatedness of the clinically important bacteria (14, 15). Although WGS has ultimate resolution and is already used for the molecular typing of many microorganisms in developed countries, it is still too laborious and time-consuming to obtain useful data in routine surveillance (15). Currently, among the DNA fingerprinting methods, PFGE is a worldwide used reliable, discriminative, and reproducible method for a variety of bacterial species including *K. pneumoniae* (16-18).

2. Objectives

The infections caused by carbapenem-resistant *K. pneumoniae* isolates are a current challenge during treatment and infection control in hospitals due to their rapid transmission and the limited antibiotic options available. Identification of clonal relationship and resistance mechanisms among these resistant strains isolated from hospitalized patients would be very important to evaluate effectiveness of the infection control and treatment programs applied in the study population and develop more effective

programs to minimize spread of the resistant pathogens. Therefore, the current study aimed at investigating the carbapenemase enzymes and clonal relationships among the carbapenem-resistant *K. pneumoniae* isolates in a tertiary hospital.

3. Methods

3.1. Ethics Statement

The current study protocol was approved by the ethics committee of Ankara Atatürk training and educating hospital (date, 21/05/2014, number 78). The study was conducted in accordance with the tenets of the Helsinki declaration. The current study was carried out in a tertiary training and research hospital that had 488 beds with 10 intensive care units (ICUs) from March 2012 to January 2015.

3.2. Bacterial Isolates

Klebsiella pneumoniae isolates were cultured from various clinical samples including blood, urine, wound/abscess, tracheal aspirate/bronchoalveolar lavage, and rectal swabs of the inpatients. Biochemical tests such as the fermentation of glucose and lactose, hydrogen sulfide production, citrate utilization, urease activity, motility, indol production, ornithine-decarboxylase activity, and commercial API 20E (Bio-Merieux, France) kit were used to identify *K. pneumoniae* isolates.

3.3. Antibiotic Susceptibility Testing

All identified *K. pneumoniae* isolates were subjected to antibiotic susceptibility testing by Kirby-Bauer disc diffusion method and the results were interpreted according to CLSI criteria (12). As recommended by CLSI, *Escherichia coli* ATCC 25922 strain was used as a negative control. Ertapenem was used to screen carbapenem resistance as recommended by CLSI. Ertapenem resistance was confirmed by the gradient diffusion method (E-test, Bio-Merieux, France).

3.4. Modified Hodge Test

The MHT was performed for all ertapenem-resistant isolates by following the protocol of CLSI (12). Briefly, a 0.5 McFarland standard suspension of *E. coli* ATCC 25922 was prepared in saline. A 1:10 dilution of this suspension was streaked as lawn onto a Mueller-Hinton agar (MHA) plate. Ertapenem disc (10 µg) was placed in the center of the plate. Test and control samples were inoculated in a straight line from the edge of ertapenem disc to the edge of the plate. After 18 to 24 hour incubation, the plates were examined for the enhanced growth around the bacteria straight at the intersection of the straight line and the zone

of inhibition. The presence of enhanced growth was evaluated as positive for carbapenemase production. *K. pneumoniae* ATCC-BAA1705 and *K. pneumoniae* ATCC-BAA1706 were used as positive and negative controls, respectively.

3.5. Ertapenem/Ethylenediaminetetraacetic Acid-Combined Disk Test

Ertapenem/EDTA-combined disk test (Ertapenem-ECD) was performed to detect metallo- β -lactamases. A 0.5 McFarland suspension of test samples was inoculated onto plates with MHA. Two ertapenem discs (10 μ g) were placed on the plate, and 10 μ L of EDTA solution was added to one of them to obtain the desired EDTA concentration (750 μ g). The inhibition zones of the ertapenem and ertapenem/EDTA disks were compared after 16 to 18 hours of incubation. If the increase in inhibition zone with the ertapenem and EDTA disc was ≥ 7 mm as compared with the ertapenem disc alone, the isolate was considered as MBL positive (13, 19).

3.6. Polymerase Chain Reaction

All carbapenem-resistant *K. pneumoniae* isolates were tested for the presence of carbapenemase-encoding genes including *bla*OXA-48, *bla*NDM-1, *bla*KPC, *bla*IMP, and *bla*VIM by the multiplex PCR using the primers described previously (20-22). A bacterial suspension (equal to McFarland 4 turbidity) was prepared in sterile water and boiled for 10 minutes. Then, it was centrifuged for 2 minutes at 13000 g and the supernatant was used as the DNA source. The PCR reaction mixture contained 1.5 mM MgCl₂, each of the deoxynucleotide triphosphates at a concentration of 200 μ M, 5 μ L of 10 \times PCR buffer (750 mM Tris-HCl (pH 8.8), 200 mM (NH₄)₂SO₄, 0.1% (v/v) Tween 20), 10 pmol of each primer, and 2.5 U of Taq DNA polymerase (Thermo Scientific-Fermentas Corporation, Vilnius, Lithuania) in a final reaction volume of 50 μ L. The following amplification conditions were used: initial denaturation at 94°C for 3 minutes, followed by 35 cycles of 94°C for 30 seconds, 55°C for 30 seconds, and 72°C for 1 minute, with a final extension step at 72°C for 7 minutes. The amplified DNA products were analyzed by electrophoresis on a 1.5% agarose gel and the results were evaluated according to the size of each amplicon (20-22).

3.7. Pulsed-Field Gel Electrophoresis

Pulsed-field gel electrophoresis (PFGE) of the carbapenem-resistant *K. pneumoniae* isolates was performed following the protocol of Durmaz et al. (23). Briefly, bacterial cells were embedded into low melting agarose including sodium dodecyl sulfate. Cells in plugs

were digested with lysozyme and proteinase K. After washing the plugs, genomic DNA was digested with 20 U of *Xba*I restriction endonuclease (Thermo Scientific-Fermentas Corporation, Vilnius, Lithuania). DNA fragments were separated using a CHEF-DR II system (Bio-Rad Laboratories, Nazareth, Belgium) at 14°C with 6 Volt/cm² for 20 hours. The initial and final switching time was 5 and 30 seconds, respectively. The gel was stained with ethidium bromide (5 μ g/mL) for 20 minutes and destained with distilled water for 30 minutes. The DNA band profiles were visualized under UV light, photographed using gel logic 2200 imaging system (Kodak Co., Rochester, NY, USA), and analyzed by GelCompar II electrophoresis software (version 7.0; Applied Maths, Sint-Martens-Latem, Belgium). A 1% band tolerance was used to compare DNA profiles. Clonal relationship among isolates was evaluated by the criteria of Tenover et al. (16).

3.8. Statistical Analysis

The data were analyzed with SPSS software version 18. The Pearson chi-square test was used to analyze the data and statistically significant level was accepted as less than 0.05.

4. Results

Ertapenem resistance was determined in 93 of the 1605 (5.8%) *K. pneumoniae* isolates cultured from various clinical samples and rectal swabs of the inpatients. Of the carbapenem-resistant *K. pneumoniae* isolates, 28 (30.1%) were isolated from rectal swab samples of the inpatients and these patients were evaluated as colonized with *K. pneumoniae*. The remaining 65 carbapenem-resistant *K. pneumoniae* isolates were recovered as a pure culture from blood (n = 20, 21.5%), urine (n = 20, 21.5%), wound/abscess (n = 17, 18.3%), and tracheal aspirate/bronchoalveolar lavage (n = 8, 8.6%) of the inpatients who had clinical signs of pneumonia, sepsis, urinary tract infections, abscess, or burn wound infections. These clinical and laboratory findings were evaluated together and these isolates were accepted as infectious agents. The 71% (66/93) of the resistant isolates were from ICUs, others were isolated from the patients hospitalized in various wards (table 1 in Supplementary file).

Ninety-one (97.8%) of the carbapenem-resistant *K. pneumoniae* isolates were positive with MHT confirming carbapenemase production. Only 6 (6.5%) isolates were positive with ECD method demonstrating MBLs (table 1 in Supplementary file). Multiplex PCR yielded negative results in 3 (3.2%) of the 93 carbapenem-resistant isolates, the remaining 90 isolates were positive. All 6 isolates showing ECD

positivity had *bla*NDM-1 (6.5%). The majority of the resistant isolates had *bla*OXA-48 ($n = 84$, 90.3%). No isolate had both *bla*NDM1 and *bla*OXA-48 simultaneously. The *bla*KPC, *bla*IMP, and *bla*VIM resistance genes were not detected in any of the isolates (table 1 in Supplementary file).

Pulse-field gel electrophoresis of the 93 *K. pneumoniae* isolates yielded 55 different pulsotypes (PFGE types). Of the pulsotypes, 15 comprised of clusters and the size of each ranged from 2 to 9 strains, while the remaining 40 were unique, each included 1 strain only. The clustering rate was 57% (53/93 isolates). Based on the application of similarity coefficient higher than 85%, 11 major PFGE groups were distinguished and 80.6% of the tested strains were clonally related. Pulsotype 4 was the largest one, harboring 9 strains, followed by pulsotype 2 (seven strains), pulsotype 1 (six strains), pulsotype 10 (five strains), and pulsotype 35 (four strains) (Figure 1).

The 66 *K. pneumoniae* isolates cultured from the patients in ICUs were classified in 40 different pulsotypes. The 12 pulsotypes were clusters including a total of 38 isolates; the clustering rate was 57.6%. On the other hand, 21 different pulsotypes were determined among the 27 isolates from various services and the clustering rate was 37%. There was no significant difference between the clustering rates of the isolates from the ICUs and those of the other clinics ($P = 0.072$). According to the clinical samples, there was significant difference between the clustering rates of the isolates cultured from different samples ($P = 0.006$). The highest clustering rate was observed in the rectal swab isolates (64.3%), followed by urine (40%), blood (35%), and wound/abscess (23.5%) isolates. All lower respiratory tract isolates showed unique pulsotypes (Table 2).

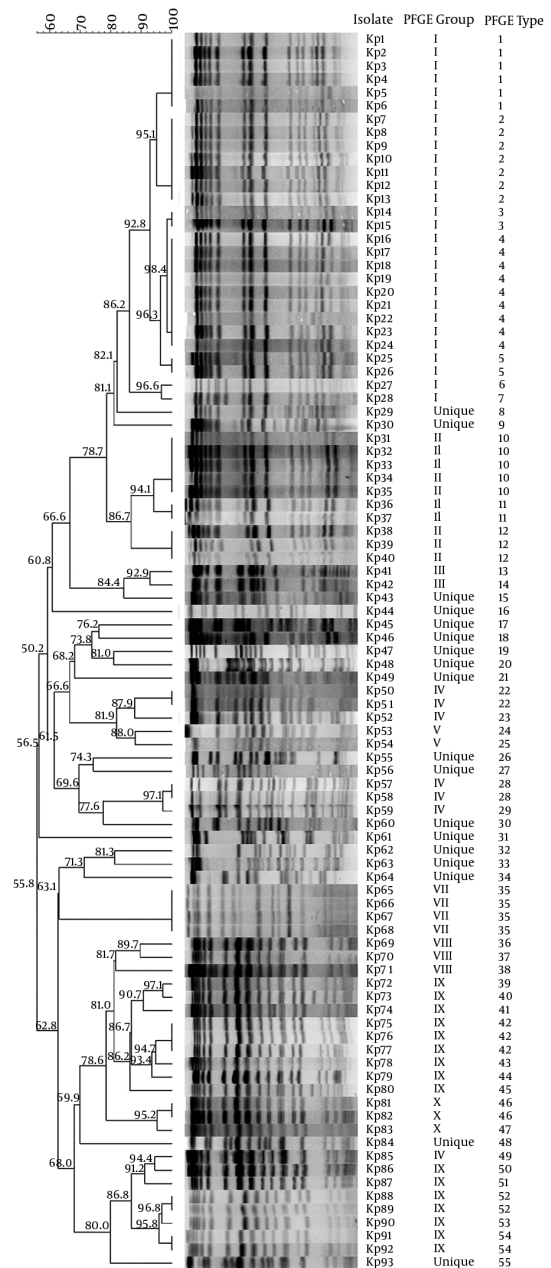
Table 2. The PFGE Typing Results of *K. pneumoniae* Isolates in Different Samples

Type of Sample	No of Isolates	PFGE Typing Results	
		No. of different pulsotypes	Clustering rate, %
Blood	20	16	35
Urine	20	16	40
Wound/abscess	17	14	23,5
Lower respiratory tract	8	8	All unique
Rectal swab	28	16	64.3

5. Discussion

There is a real threat of the increasing carbapenemase producing isolates that causes serious hospital-acquired

Figure 1. Dendrogram of *Xba*I PFGE Typing of the 93 Carbapenem-Resistant *K. pneumoniae* Isolates



The isolates with indistinguishable PFGE types were indicated with the same number. The isolates showing PFGE types, which differed from the other only one or more bands, were indicated with unique numbers. PFGE groups indicated with the same Roman numbers were defined based on the similarity coefficient $\geq 85\%$. The numbers given on the branches indicated similarity coefficient values.

infections and the high mortality rates. The prevalence of carbapenem resistance in *K. pneumoniae* isolates was 3.6% to 10.8% in USA according to the center for disease control

and prevention (CDC) 2008 report. Meanwhile in Europe, according to European antimicrobial resistance surveillance network (EARS-Net) data, it was reported as 7.3% (24, 25). In Turkey, the rate of carbapenem resistance was reported in 2.2% of *K. pneumoniae* isolates recovered in a university hospital from 2004 to 2007 (26). Thereafter, the increased resistance rates varying from 3.7% to 16.6% were reported from different hospitals (27-29).

In the Hitit-2 surveillance study of 2007 performed on the isolates from 13 hospitals located in different geographic regions of Turkey, the prevalence of carbapenem resistance in *K. pneumoniae* was notified as 3.1% ranging from 0 to 16% (27). Similarly, Kuzucu et al. found 3.6% carbapenem resistance among the *K. pneumoniae* isolates from the East part of Turkey in the same time period (28). Then, the rate of carbapenem resistance slightly increased to 6.8% in 2013 (29). In agreement with the previous data, the current study showed that 5.8% of *K. pneumoniae* isolates recovered from a tertiary hospital in the capital city of Turkey were phenotypically resistant to carbapenems.

Modified Hodge test is a reliable test especially for KPC and *bla*OXA-48 producing isolates, but not for MBL producers (12). Similar to the current study data, the current study found that nearly all ertapenem-resistant *K. pneumoniae* isolates with *bla*OXA-48 were positive with MHT. Parallel to the current study data, Kuzucu et al., also showed that all of the carbapenem-resistant isolates were MHT positive (28). In contrast to these results, in another study, MHT positivity was found only in 1 out of 7 isolates with carbapenemase genes (5), and it was concluded that MHT might be false negative, especially in the presence of ESBL or AmpC with reduced porine activity (5, 30). In the present study, ECD method was positive in 6.5% of the tested ertapenem-resistant isolates and all of them harbored *bla*NDM-1, suggesting high concordance between ECD method and PCR. This result was in agreement with those of the previous reports indicating the reliability of combine disc methods to detect MBL producing isolates (30, 31).

In the present study, more than 90% of the carbapenem-resistant *K. pneumoniae* isolates were *bla*OXA-48 positive. This enzyme was firstly reported from a *K. pneumoniae* isolate in Turkey in 2001 (22). Later, it was reported from different hospitals with increased rates (29, 32). A multi-central surveillance study performed at a Turkish university hospital from 2009 to 2013 showed that more than 96% of *K. pneumoniae* isolates harbored *bla*OXA-48 carbapenemase (21). In another multi-central study conducted on the patients from different hospitals of Turkey as part of the European survey of carbapenemase producing *Enterobacteriaceae* (EuSCAPE), the high prevalence (83%) of *bla*OXA-48 was also confirmed (33).

In the current study, *bla*NDM-1 gene was observed in 6

(6.5%) of the resistant isolates, 4 of them were from clinical samples and 2 from rectal swabs. There were no direct epidemiological link such as common isolation date and/or hospitalized wards between these isolates, except that 2 of them were in the same pulsotype, suggesting that the NDM-1 producer isolates mostly came from different clones. In Turkey, the first NDM-1 positive *K. pneumoniae* isolate was reported from the blood culture of a child patient in 2011 (34). In 2013, the study performed on 94 carbapenem-resistant *K. pneumoniae* isolates recovered from rectal swab samples of inpatients reported that 4.3% of the isolates produced only NDM-1, and 1% produced both *bla*OXA-48 and NDM-1 (35). Currently, a NDM-1 positive *K. pneumoniae* epidemic was described in a tertiary hospital and 2 of the isolates also harbored the *bla*OXA-48 (36). Parallel to the results of Turkey, the emergence of NDM-1 producers among *K. pneumoniae* and other *Enterobacteriaceae* members is reported worldwide, especially from India and Middle East and Far East countries (37, 38).

Verona integron-encoded MBLs and IMPs are the most common MBLs worldwide especially in Greece, Taiwan, and Japan. *Klebsiella pneumoniae* carbapenemase was first reported in 1996, and became more widespread and today is the most common carbapenemase (3, 7, 39). In the present study, KPC, IMP, and VIM were not determined from any of the isolates. Similar to the current study data, 2 recent studies performed on carbapenem-resistant *K. pneumoniae* clinical isolates from different hospitals of Turkey, no positive results for KPC, IMP, and VIM enzymes were reported (40, 41). In a multicentral surveillance study, the prevalence of VIM, IMP, and KPC among 136 carbapenem-resistant *E. coli* and *K. pneumoniae* isolates was reported as 2.8%, 1.4%, and 0%, respectively (33). Based on the results of the current and those of previous studies, it can be speculated that these enzymes are not a major problem in Turkey yet; however, it is worth to follow their incidence.

Pulse-field gel electrophoresis provides very useful data to understand the epidemiology of carbapenem-resistant *K. pneumoniae* isolates and to revise and enhance infection control programs to prevent bacterial transmission (17). In the current study, the results of PFGE showed that more than half of the carbapenem-resistant *K. pneumoniae* isolates were identified in clusters and according to the similarity coefficient higher than 85%, clonally relatedness among the tested isolates increased to 80.6%. This result indicated the emergence and spread of these resistant isolates across the hospital. The current study also indicated that cross-transmission was not restricted in a specific clinic or time period. For instance, although the 9 *K. pneumoniae* isolates clustered in the largest PFGE type, 4 were mainly isolated from the reanimation unit, this clone was also found in 2 other services and it stayed in the stud-

ies hospital in a 20-month period. The second largest PFGE type 2 comprised of 7 isolates collected from 4 different samples of the patients in 5 different services during the 6-month period.

The PFGE type 1 included 6 species isolated from the patients hospitalized in 4 different services during a period of 12 months. Similar to the current study, PFGE of multidrug-resistant *K. pneumoniae* isolates in Egypt revealed that clonally related strains were isolated from various sources such as different patients in the same hospital and environmental samples (17). A recent study performed on carbapenem-resistant *K. pneumoniae* clinical isolates in Shandog, China, showed that the strains in the same PFGE type were isolated in the same clinic for more than 2 years (6). As already indicated (18, 42), the high rate of clonally relatedness among the isolates from different services in a wide time period was an important evidence for ongoing cross-transmission of these resistant isolates in the current study setting. Infected or colonized patients, hospital staff, and/or contaminated equipment might affect this cross-transmission.

5.1. Conclusion

High rate (80.6%) of clonal relationship between the carbapenem-resistant isolates collected in a 3-year period indicates a longtime cross-contamination in study population. Therefore, strict infection control and surveillance measures combined with careful and reasonable use of antibiotics are very important to minimize the spread of carbapenem resistance.

Supplementary Material

Supplementary material(s) is available [here](#).

Acknowledgments

The current study was supported by Ankara Yıldırım Beyazıt University research foundation (Project no: 1406).

Footnote

Authors' Contribution: Study concept and design, Riza Durmaz, Nevreste Celikbilek, Ziya Cibali Acikgoz; acquisition of data, Ziya Cibali Acikgoz, Nevreste Celikbilek, Fisun Kirca, Aysegul Gozalan, and Ozlem Unaldi; analysis and interpretation of data: Ozlem Unaldi, Riza Durmaz, and Nevreste Celikbilek; drafting of the manuscript, Nevreste Celikbilek, Riza Durmaz, and Ozlem Unaldi; critical revision of the manuscript for important intellectual content, Riza Durmaz and Nevreste Celikbilek; statistical analysis, Aysegul Gozalan; administrative, technical, and material

support, Ziya Cibali Acikgoz and Riza Durmaz; study supervision, Riza Durmaz and Ziya Cibali Acikgoz.

References

1. Cristina ML, Sartini M, Ottria G, Schinca E, Cenderello N, Crisalli MP, et al. Epidemiology and biomolecular characterization of carbapenem-resistant klebsiella pneumoniae in an Italian hospital. *J Prev Med Hyg.* 2016;**57**(3):E149–56. [PubMed: 27980379].
2. Sanchez M, Herruzo R, Marban A, Araujo P, Asensio MJ, Leyva F, et al. Risk factors for outbreaks of multidrug-resistant Klebsiella pneumoniae in critical burn patients. *J Burn Care Res.* 2012;**33**(3):386–92. doi: 10.1097/BCR.0b013e318231df95. [PubMed: 21979841].
3. Gupta N, Limbago BM, Patel JB, Kallen AJ. Carbapenem-resistant Enterobacteriaceae: epidemiology and prevention. *Clin Infect Dis.* 2011;**53**(1):60–7. doi: 10.1093/cid/cir202. [PubMed: 21653305].
4. Watkins RR, Bonomo RA. Increasing prevalence of carbapenem-resistant Enterobacteriaceae and strategies to avert a looming crisis. *Expert Rev Anti Infect Ther.* 2013;**11**(6):543–5. doi: 10.1586/eri.13.46. [PubMed: 23750724].
5. Eser OK, Altun Uludag H, Ergin A, Boral B, Sener B, Hascelik G. [Carbapenem resistance in ESBL positive Enterobacteriaceae isolates causing invasive infections]. *Mikrobiyol Bul.* 2014;**48**(1):59–69. [PubMed: 24506716].
6. Jin Y, Song X, Liu Y, Wang Y, Zhang B, Fan H, et al. Characteristics of carbapenemase-producing Klebsiella pneumoniae as a cause of neonatal infection in Shandong, China. *Exp Ther Med.* 2017;**13**(3):1117–26. doi: 10.3892/etm.2017.4070. [PubMed: 28450951].
7. Lee CR, Lee JH, Park KS, Kim YB, Jeong BC, Lee SH. Global Dissemination of Carbapenemase-Producing Klebsiella pneumoniae: Epidemiology, Genetic Context, Treatment Options, and Detection Methods. *Front Microbiol.* 2016;**7**:895. doi: 10.3389/fmicb.2016.00895. [PubMed: 27379038].
8. Poirel L, Heritier C, Tolun V, Nordmann P. Emergence of oxacillinase-mediated resistance to imipenem in Klebsiella pneumoniae. *Antimicrob Agents Chemother.* 2004;**48**(1):15–22. doi: 10.1128/AAC.48.1.15-22.2004. [PubMed: 14693513].
9. Carrer A, Poirel L, Yilmaz M, Akan OA, Feriha C, Cuzon G, et al. Spread of OXA-48-encoding plasmid in Turkey and beyond. *Antimicrob Agents Chemother.* 2010;**54**(3):1369–73. doi: 10.1128/AAC.01312-09. [PubMed: 20086157].
10. Canton R, Akova M, Carmeli Y, Giske CG, Glupczynski Y, Gniadkowski M, et al. Rapid evolution and spread of carbapenemases among Enterobacteriaceae in Europe. *Clin Microbiol Infect.* 2012;**18**(5):413–31. doi: 10.1111/j.1469-0691.2012.03821.x. [PubMed: 22507109].
11. Nordmann P, Poirel L. Strategies for identification of carbapenemase-producing Enterobacteriaceae. *J Antimicrob Chemother.* 2013;**68**(3):487–9. doi: 10.1093/jac/dks426. [PubMed: 23104494].
12. Clinical and Laboratory Standards Institute. Performance standards for antimicrobial susceptibility testing, approved standards and twenty-seventh informational supplement (M100-S27) CLSI. 2017.
13. Tsakris A, Poulou A, Pournaras S, Voulgari E, Vrioni G, Themeli-Digalaki K, et al. A simple phenotypic method for the differentiation of metallo-beta-lactamases and class A KPC carbapenemases in Enterobacteriaceae clinical isolates. *J Antimicrob Chemother.* 2010;**65**(8):1664–71. doi: 10.1093/jac/dkq210. [PubMed: 20542902].
14. Ranjbar R, Karami A, Farshad S, Giammanco GM, Mammina C. Typing methods used in the molecular epidemiology of microbial pathogens: a how-to guide. *New Microbiol.* 2014;**37**(1):1–15. [PubMed: 24531166].
15. Sabat AJ, Budimir A, Nashev D, Sa-Leao R, van Dijk J, Laurent F, et al. Overview of molecular typing methods for outbreak detection and epidemiological surveillance. *Euro Surveill.* 2013;**18**(4):20380. [PubMed: 23369389].

16. Tenover FC, Arbeit RD, Goering RV. How to select and interpret molecular strain typing methods for epidemiological studies of bacterial infections: a review for healthcare epidemiologists. Molecular Typing Working Group of the Society for Healthcare Epidemiology of America. *Infect Control Hosp Epidemiol.* 1997;**18**(6):426–39. doi: [10.1086/647644](https://doi.org/10.1086/647644). [PubMed: [9181401](https://pubmed.ncbi.nlm.nih.gov/9181401/)].
17. Mohamed ER, Aly SA, Halby HM, Ahmed SH, Zakaria AM, El-Asheer OM. Epidemiological typing of multidrug-resistant Klebsiella pneumoniae, which causes paediatric ventilator-associated pneumonia in Egypt. *J Med Microbiol.* 2017;**66**(5):628–34. doi: [10.1099/jmm.0.000473](https://doi.org/10.1099/jmm.0.000473). [PubMed: [28485710](https://pubmed.ncbi.nlm.nih.gov/28485710/)].
18. Ohadian Moghadam S, Pourmand MR, Douraghi M, Sabzi S, Ghaffari P. Utilization of PFGE as a Powerful Discriminative Tool for the Investigation of Genetic Diversity among MRSA Strains. *Iran J Public Health.* 2017;**46**(3):351–6. [PubMed: [28435821](https://pubmed.ncbi.nlm.nih.gov/28435821/)].
19. Lee K, Lim YS, Yong D, Yum JH, Chong Y. Evaluation of the Hodge test and the imipenem-EDTA double-disk synergy test for differentiating metallo-beta-lactamase-producing isolates of *Pseudomonas* spp. and *Acinetobacter* spp. *J Clin Microbiol.* 2003;**41**(10):4623–9. doi: [10.1128/JCM.41.10.4623-4629.2003](https://doi.org/10.1128/JCM.41.10.4623-4629.2003). [PubMed: [14532193](https://pubmed.ncbi.nlm.nih.gov/14532193/)].
20. Garza-Ramos U, Morfin-Otero R, Sader HS, Jones RN, Hernandez E, Rodriguez-Noriega E, et al. Metallo-beta-lactamase gene bla(IMP-15) in a class 1 integron, In95, from *Pseudomonas aeruginosa* clinical isolates from a hospital in Mexico. *Antimicrob Agents Chemother.* 2008;**52**(8):2943–6. doi: [10.1128/AAC.00679-07](https://doi.org/10.1128/AAC.00679-07). [PubMed: [18490501](https://pubmed.ncbi.nlm.nih.gov/18490501/)].
21. Gomez-Gil MR, Pano-Pardo JR, Romero-Gomez MP, Gasior M, Lorenzo M, Quiles I, et al. Detection of KPC-2-producing *Citrobacter freundii* isolates in Spain. *J Antimicrob Chemother.* 2010;**65**(12):2695–7. doi: [10.1093/jac/dkq352](https://doi.org/10.1093/jac/dkq352). [PubMed: [20851814](https://pubmed.ncbi.nlm.nih.gov/20851814/)].
22. Poirel L, Bonnin RA, Nordmann P. Genetic features of the widespread plasmid coding for the carbapenemase OXA-48. *Antimicrob Agents Chemother.* 2012;**56**(1):559–62. doi: [10.1128/AAC.05289-11](https://doi.org/10.1128/AAC.05289-11). [PubMed: [22083465](https://pubmed.ncbi.nlm.nih.gov/22083465/)].
23. Durmaz R, Otlu B, Koksall F, Hosoglu S, Ozturk R, Ersoy Y, et al. The optimization of a rapid pulsed-field gel electrophoresis protocol for the typing of *Acinetobacter baumannii*, *Escherichia coli* and *Klebsiella* spp. *Jpn J Infect Dis.* 2009;**62**(5):372–7. [PubMed: [19762987](https://pubmed.ncbi.nlm.nih.gov/19762987/)].
24. Hidron AI, Edwards JR, Patel J, Horan TC, Sievert DM, Pollock DA, et al. NHSN annual update: antimicrobial-resistant pathogens associated with healthcare-associated infections: annual summary of data reported to the National Healthcare Safety Network at the Centers for Disease Control and Prevention, 2006–2007. *Infect Control Hosp Epidemiol.* 2008;**29**(11):996–1011. doi: [10.1086/591861](https://doi.org/10.1086/591861). [PubMed: [18947320](https://pubmed.ncbi.nlm.nih.gov/18947320/)].
25. European Center for Disease Control . European Antimicrobial Resistance Surveillance Network 2014. [cited February]. Available from: http://ecdc.europa.eu/en/healthtopics/antimicrobial-resistance-and-consumption/antimicrobial_resistance/EARS-Net/Pages/EARS-Net.aspx.
26. Us E, Tekeli A, Arkan Akan O, Dolapci I, Sahin F, Karahan ZC. [Molecular epidemiology of carbapenem-resistant Klebsiella pneumoniae strains isolated between 2004–2007 in Ankara University Hospital, Turkey]. *Mikrobiyol Bul.* 2010;**44**(1):1–10. [PubMed: [20455393](https://pubmed.ncbi.nlm.nih.gov/20455393/)].
27. Gur D, Hascelik G, Aydin N, Telli M, Gultekin M, Ogulnc D, et al. Antimicrobial resistance in gram-negative hospital isolates: results of the Turkish HITT-2 Surveillance Study of 2007. *J Chemother.* 2009;**21**(4):383–9. doi: [10.1179/joc.2009.21.4.383](https://doi.org/10.1179/joc.2009.21.4.383). [PubMed: [19622455](https://pubmed.ncbi.nlm.nih.gov/19622455/)].
28. Kuzucu C, Yetkin F, Gorgec S, Ersoy Y. [Investigation of the susceptibilities of extended-spectrum beta-lactamase-producing *Escherichia coli* and *Klebsiella* spp. strains to ertapenem and other carbapenems]. *Mikrobiyol Bul.* 2011;**45**(1):28–35. [PubMed: [21341156](https://pubmed.ncbi.nlm.nih.gov/21341156/)].
29. Zarakolu P, Eser OK, Aladag E, Al-Zahrani IA, Day KM, Atmaca O, et al. Epidemiology of carbapenem-resistant Klebsiella pneumoniae colonization: a surveillance study at a Turkish university hospital from 2009 to 2013. *Diagn Microbiol Infect Dis.* 2016;**85**(4):466–70. doi: [10.1016/j.diagmicrobio.2016.05.012](https://doi.org/10.1016/j.diagmicrobio.2016.05.012). [PubMed: [27306118](https://pubmed.ncbi.nlm.nih.gov/27306118/)].
30. Girlich D, Poirel L, Nordmann P. Value of the modified Hodge test for detection of emerging carbapenemases in Enterobacteriaceae. *J Clin Microbiol.* 2012;**50**(2):477–9. doi: [10.1128/JCM.05247-11](https://doi.org/10.1128/JCM.05247-11). [PubMed: [22116154](https://pubmed.ncbi.nlm.nih.gov/22116154/)].
31. Doyle D, Peirano G, Lascols C, Lloyd T, Church DL, Pitout JD. Laboratory detection of Enterobacteriaceae that produce carbapenemases. *J Clin Microbiol.* 2012;**50**(12):3877–80. doi: [10.1128/JCM.02117-12](https://doi.org/10.1128/JCM.02117-12). [PubMed: [22993175](https://pubmed.ncbi.nlm.nih.gov/22993175/)].
32. Aktas Z, Kayacan CB, Schneider I, Can B, Midilli K, Bauernfeind A. Carbapenem-hydrolyzing oxacillinase, OXA-48, persists in Klebsiella pneumoniae in Istanbul, Turkey. *Chemotherapy.* 2008;**54**(2):101–6. doi: [10.1159/000118661](https://doi.org/10.1159/000118661). [PubMed: [18303258](https://pubmed.ncbi.nlm.nih.gov/18303258/)].
33. Cakar A, Akyon Y, Gur D, Karatuna O, Ogunc D, Ozhak Baysan B, et al. [Investigation of carbapenemases in carbapenem-resistant *Escherichia coli* and *Klebsiella pneumoniae* strains isolated in 2014 in Turkey]. *Mikrobiyol Bul.* 2016;**50**(1):21–33. [PubMed: [27058326](https://pubmed.ncbi.nlm.nih.gov/27058326/)].
34. Labarca J, Poirel L, Ozdamar M, Turkoglu S, Hakko E, Nordmann P. KPC-producing Klebsiella pneumoniae, finally targeting Turkey. *New Microbes New Infect.* 2014;**2**(2):50–1. doi: [10.1002/nmi.2.42](https://doi.org/10.1002/nmi.2.42). [PubMed: [25356342](https://pubmed.ncbi.nlm.nih.gov/25356342/)].
35. Alp E, Percin D, Colakoglu S, Durmaz S, Kurkcu CA, Ekincioglu P, et al. Molecular characterization of carbapenem-resistant Klebsiella pneumoniae in a tertiary university hospital in Turkey. *J Hosp Infect.* 2013;**84**(2):178–80. doi: [10.1016/j.jhin.2013.03.002](https://doi.org/10.1016/j.jhin.2013.03.002). [PubMed: [23623803](https://pubmed.ncbi.nlm.nih.gov/23623803/)].
36. Karabay O, Altindis M, Koroglu M, Karatuna O, Aydemir OA, Erdem AF. The carbapenem-resistant Enterobacteriaceae threat is growing: NDM-1 epidemic at a training hospital in Turkey. *Ann Clin Microbiol Antimicrob.* 2016;**15**:6. doi: [10.1186/s12941-016-0118-4](https://doi.org/10.1186/s12941-016-0118-4). [PubMed: [26860360](https://pubmed.ncbi.nlm.nih.gov/26860360/)].
37. Yanik K, Emir D, Eroglu C, Karadag A, Guney AK, Gunaydin M. [Investigation of the presence of New Delhi metallo-beta-lactamase-1 (NDM-1) by PCR in carbapenem-resistant gram-negative isolates]. *Mikrobiyol Bul.* 2013;**47**(2):382–4. [PubMed: [23621739](https://pubmed.ncbi.nlm.nih.gov/23621739/)].
38. Munoz-Price LS, Poirel L, Bonomo RA, Schwaber MJ, Daikos GL, Cormican M, et al. Clinical epidemiology of the global expansion of Klebsiella pneumoniae carbapenemases. *Lancet Infect Dis.* 2013;**13**(9):785–96. doi: [10.1016/S1473-3099\(13\)70190-7](https://doi.org/10.1016/S1473-3099(13)70190-7). [PubMed: [23969216](https://pubmed.ncbi.nlm.nih.gov/23969216/)].
39. Lopez-Cerero L, Egea P, Gracia-Ahufinger I, Gonzalez-Padilla M, Rodriguez-Lopez F, Rodriguez-Bano J, et al. Characterisation of the first ongoing outbreak due to KPC-3-producing Klebsiella pneumoniae (ST512) in Spain. *Int J Antimicrob Agents.* 2014;**44**(6):538–40. doi: [10.1016/j.ijantimicag.2014.08.006](https://doi.org/10.1016/j.ijantimicag.2014.08.006). [PubMed: [25446907](https://pubmed.ncbi.nlm.nih.gov/25446907/)].
40. Iraz M, Ozad Duzgun A, Sandalli C, Doymaz MZ, Akkoyunlu Y, Saral A, et al. Distribution of beta-lactamase genes among carbapenem-resistant Klebsiella pneumoniae strains isolated from patients in Turkey. *Ann Lab Med.* 2015;**35**(6):595–601. doi: [10.3343/alm.2015.35.6.595](https://doi.org/10.3343/alm.2015.35.6.595). [PubMed: [26354347](https://pubmed.ncbi.nlm.nih.gov/26354347/)].
41. Sahin K, Tekin A, Ozdas S, Akin D, Yapislar H, Dilek AR, et al. Evaluation of carbapenem resistance using phenotypic and genotypic techniques in Enterobacteriaceae isolates. *Ann Clin Microbiol Antimicrob.* 2015;**14**:44. doi: [10.1186/s12941-015-0105-1](https://doi.org/10.1186/s12941-015-0105-1). [PubMed: [26444537](https://pubmed.ncbi.nlm.nih.gov/26444537/)].
42. Yetkin G, Otlu B, Cicek A, Kuzucu C, Durmaz R. Clinical, microbiologic, and epidemiologic characteristics of *Pseudomonas aeruginosa* infections in a University Hospital, Malatya, Turkey. *Am J Infect Control.* 2006;**34**(4):188–92. doi: [10.1016/j.ajic.2005.11.010](https://doi.org/10.1016/j.ajic.2005.11.010). [PubMed: [16679175](https://pubmed.ncbi.nlm.nih.gov/16679175/)].