

Crystal structure of 2-benzoylamino-*N'*-(4-hydroxybenzylidene)-3-(thiophen-2-yl)prop-2-eno-hydrazide

Karant N. Subbulakshmi,^a Badiadka Narayana,^a Hemmige S. Yathirajan,^{b*} Jerry P. Jasinski,^c Ravindranath S. Rathore^d and Christopher Glidewell^e

Received 1 July 2016

Accepted 6 July 2016

Edited by W. T. A. Harrison, University of Aberdeen, Scotland

Keywords: crystal structure; supramolecular structure; molecular conformation; hydrogen bonding.

CCDC reference: 1491115

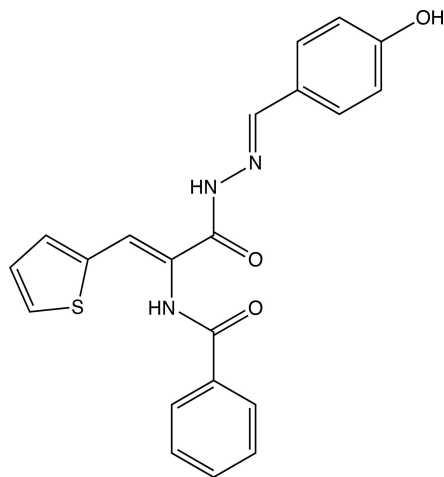
Supporting information: this article has supporting information at journals.iucr.org/e

^aDepartment of Chemistry, Mangalore University, Mangalagangothri 574 199, DK, Mangalore, India, ^bDepartment of Studies in Chemistry, University of Mysore, Manasagangothri, Mysuru 570 006, India, ^cDepartment of Chemistry, Keene State College, 229 Main Street, Keene, NH 03435-2001, USA, ^dDepartment of Bioinformatics, Central University of South Bihar, BIT Campus, PO B. V. College, Patna 800 014, India, and ^eSchool of Chemistry, University of St Andrews, Fife KY16 9ST, Scotland. *Correspondence e-mail: yathirajan@hotmail.com

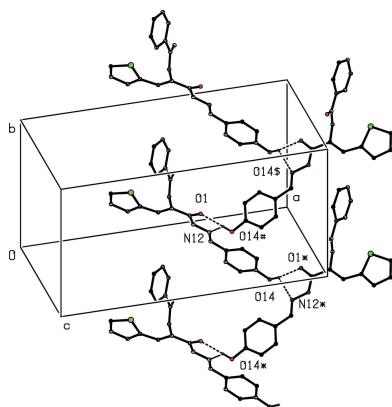
In the title compound, C₂₁H₁₇N₃O₃S, the non-H atoms, apart from those in the benzoyl group, are almost coplanar (r.m.s. deviation = 0.049 Å) and the benzoyl group is almost orthogonal to the plane of the rest of the molecule [dihedral angle = 80.34 (6)°]. In the crystal, a combination of N—H···O and asymmetric bifurcated O—H···(N,O) hydrogen bonds link the molecules into a three-dimensional network. Weak C—H···O interactions are also observed.

1. Chemical context

Compounds containing hydrazide and Schiff base functionality are of interest as examples of this class have been shown to exhibit antifungal (Singh & Dash, 1988), anti-inflammatory (Todeschini *et al.*, 1998), antimicrobial (Pandeya *et al.*, 1999) and antitumour activity (Desai *et al.*, 2001).



We report here the crystal structure of the title compound, (I) (Fig. 1), which we compare with the closely related compound methyl 2-benzoylamino-3-(thiophen-2-yl)prop-2-enoate, (II) (Subbulakshmi *et al.*, 2015). The constitutions of compounds (I) and (II) differ simply in the notional replacement of the COOMe unit in (II) by the CONHN=CHC₆H₄OH group in (I). Compound (I) was prepared by condensation of 2-benzoylamino-3-(thiophen-2-yl)prop-2-enoaldehyde with 4-hydroxybenzaldehyde, whereas compound (II) was prepared by the hydrolytic ring-opening of 2-phenyl-4-[(thiophen-2-yl)-methylidene]-1,3-



OPEN ACCESS

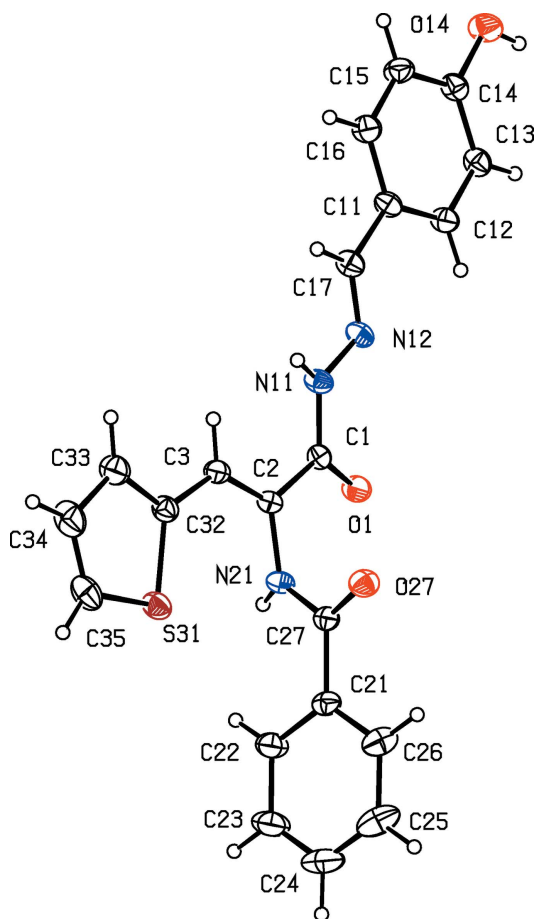


Figure 1
The molecular structure of compound (I), showing displacement ellipsoids drawn at the 30% probability level.

oxazol-5(4*H*)-one to form 2-(benzoylamino)-3-(thiophen-2-yl)prop-2-enoic acid, followed by esterification.

2. Structural commentary

The central core of the molecule of (I), encompassing atoms N21, C3, C2, C1, N11, N12, C17 and C11, is roughly planar: the maximum deviation of any of the component atoms from the mean plane is 0.0859 (14) Å with an r.m.s. deviation of 0.049 Å. The thienyl ring and the aryl ring (C11–C16) are both nearly coplanar with the central spacer unit, making dihedral angles of 1.60 (12) and 5.35 (11)°, respectively. By contrast, the aryl ring (C21–C26) is almost orthogonal to the central unit, making a dihedral angle of 80.34 (6)°. The molecules of (I) exhibit no internal symmetry and they are thus conformationally chiral: the centrosymmetric space group confirms that compound (I) crystallizes as a conformational racemate. The bond distances show clearly that the bonds C2–C3 and N12–C17 are localized double bonds, consistent with the location of the H atoms as deduced from difference maps, ruling out the occurrence in the crystal of any other tautomeric forms. The non-bonded intramolecular distance O1...O27, 3.820 (3) Å, rules out any possibility of an intramolecular O–H...O hydrogen bond.

Table 1
Hydrogen-bond geometry (Å, °).

<i>D</i> –H... <i>A</i>	<i>D</i> –H	H... <i>A</i>	<i>D</i> ... <i>A</i>	<i>D</i> –H... <i>A</i>
N11–H11...O27 ⁱ	0.86 (2)	2.10 (2)	2.9400 (18)	168 (2)
N21–H21...O1 ⁱⁱ	0.827 (19)	2.238 (19)	3.0002 (18)	153.5 (18)
O14–H14...O1 ⁱⁱⁱ	0.84 (3)	1.97 (3)	2.7727 (19)	162 (3)
O14–H14...N12 ⁱⁱⁱ	0.84 (3)	2.59 (3)	3.133 (2)	124 (2)
C3–H3...O27 ⁱ	0.93	2.52	3.333 (2)	147
C17–H17...O27 ⁱ	0.93	2.57	3.350 (2)	142
C24–H24...O14 ^{iv}	0.93	2.58	3.364 (3)	142

Symmetry codes: (i) $-x+1, -y+1, -z+1$; (ii) $-x+1, y, -z+\frac{3}{2}$; (iii) $-x+\frac{3}{2}, y-\frac{1}{2}, -z+\frac{3}{2}$; (iv) $x-\frac{1}{2}, y+\frac{3}{2}, z$.

3. Supramolecular interactions

In the crystal, the molecules of (I) are linked into a three-dimensional network by a combination of two N–H...O hydrogen bonds and a three-centre (bifurcated) O–H...*(N,O)* hydrogen bond (Table 1). The three-centre interaction is planar within experimental uncertainty with both acceptors in the same molecule, and it is markedly asymmetric. While the longer component might, perhaps, be regarded as an adventitious contact given the proximity of the two acceptor sites, the great propensity of hydroxyl groups to act as hydrogen-bond donors (Desiraju & Steiner, 1999) cautions against this interpretation. Very asymmetric three-centre hydrogen bonds are, in fact, not uncommon: for example, in the structure of 2-amino-4,6-dimethoxy-5-nitrosopyrimidine–

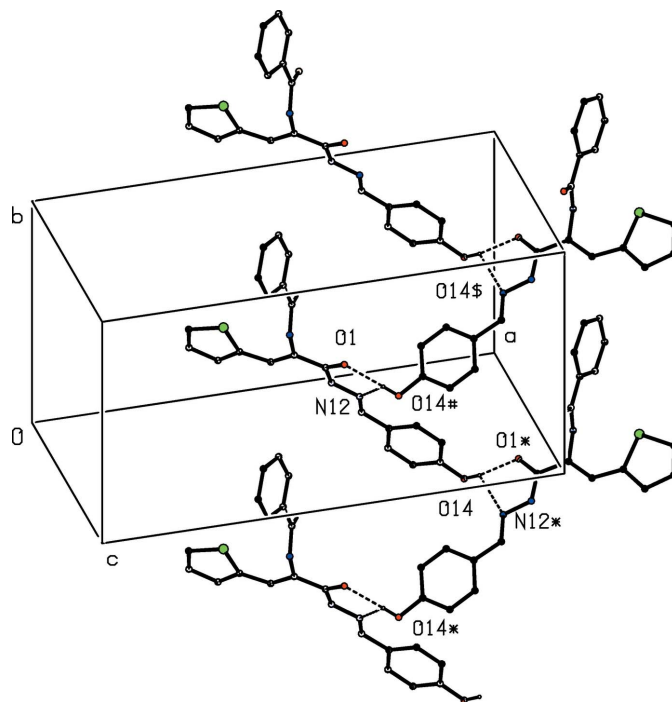


Figure 2
Part of the crystal structure of compound (I), showing the formation of a hydrogen-bonded chain of rings parallel to [010]. Hydrogen bonds are shown as dashed lines and, for the sake of clarity, the H atoms not involved in the motif shown have been omitted. The atoms marked with an asterisk (*), a hash (#) or a dollar sign (\$) are at the symmetry positions $(\frac{2}{3} - x, -\frac{1}{2} + y, \frac{3}{2} - z)$, $(\frac{2}{3} - x, \frac{1}{2} + y, \frac{3}{2} - z)$ and $(x, 1 + y, z)$, respectively.

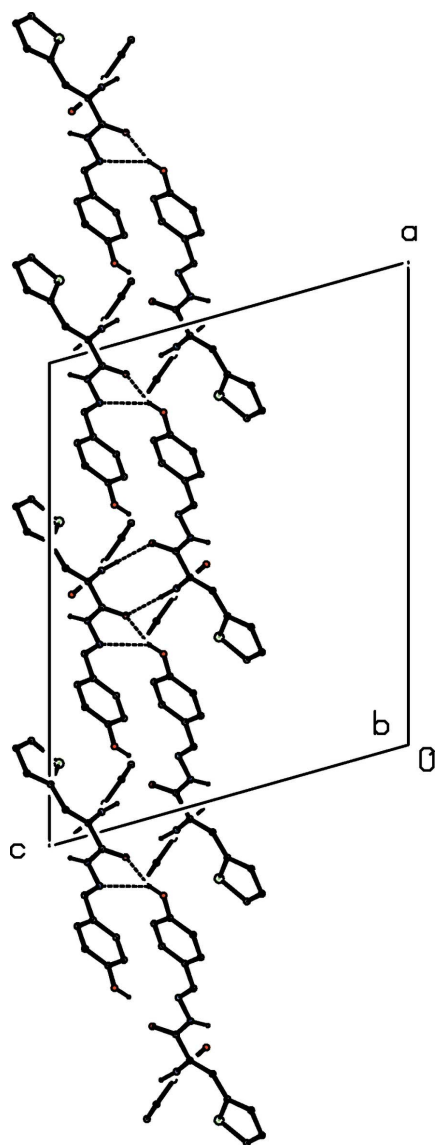


Figure 3

A projection along [010] of part of the crystal structure of compound (I), showing the linking of the [010] chains to form a sheet parallel to (001). Hydrogen bonds are shown as dashed lines and, for the sake of clarity, the H atoms bonded to C atoms have been omitted.

water (4/3) (Glidewell *et al.*, 2002) there are six different three-centre hydrogen bonds, two of which, both of O—H... (N,O) type, show asymmetries comparable with that found here in (I); markedly asymmetric N—H... (N,O) systems occur in the structures of 2-amino-4,6-bis(benzyloxy)-5-nitrosopyrimidine (Quesada *et al.*, 2002), and in (*E*)-3-dimethylamino-2-(1*H*-indol-3-ylcarbonyl)acrylonitrile, where the two acceptors form parts of different molecules (Galvez *et al.*, 2008); and a very asymmetric N—H... $(O)_2$ hydrogen bond having the two acceptors in different molecules occurs in the structure of 3,3-difluoro-5-nitro-1*H*-indol-2(3*H*)-one (Glidewell *et al.*, 2005).

The formation of the hydrogen-bonded network in (I) is most readily analysed in terms of simpler substructures of lower dimensionality (Ferguson *et al.*, 1998*a,b*; Gregson *et al.*, 2000). In the simplest of the substructures, molecules related by a 2_1 screw axis are linked by the three-centre hydrogen

bond to form a $C(8)C(11)[R^2_2(5)]$ chain of rings running parallel to the [010] direction (Fig. 2). The chains of this type are linked by the N—H...O hydrogen bond having atom O1 as the acceptor (Table 1) to form a two-dimensional substructure in the form of a sheet lying parallel to (001) (Fig. 3). Finally, these sheets are linked by the N—H...O hydrogen bond having atom O27 as the acceptor to form a continuous framework structure (Fig. 4). This network is reinforced by a number of weak C—H...O interactions (Table 1), but these are not essential to its formation.

4. Database survey

In the crystal structure of compound (II) (Subbulakshmi *et al.*, 2015), a combination of N—H...O and C—H... π (arene) hydrogen bonds links the molecules into sheets; in the struc-

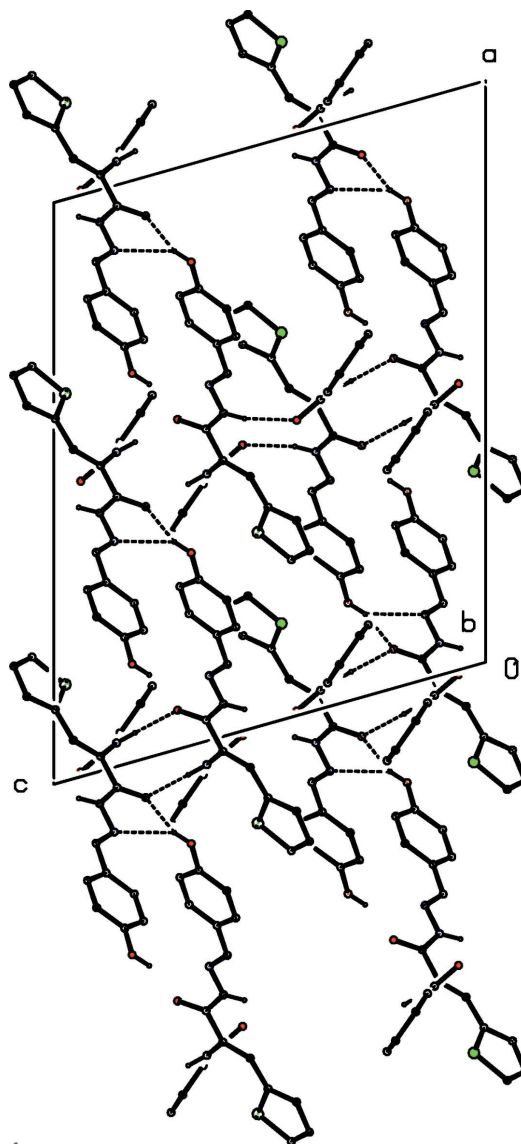


Figure 4

A projection along [010] of part of the crystal structure of compound (I), showing the linking of the (001) sheets to form a three-dimensional framework structure. Hydrogen bonds are shown as dashed lines and, for the sake of clarity, the H atoms bonded to C atoms have been omitted.

Table 2
Experimental details.

Crystal data	
Chemical formula	C ₂₁ H ₁₇ N ₃ O ₃ S
<i>M_r</i>	391.43
Crystal system, space group	Monoclinic, <i>C2/c</i>
Temperature (K)	298
<i>a</i> , <i>b</i> , <i>c</i> (Å)	22.5212 (7), 10.1879 (4), 17.3592 (5)
β (°)	105.801 (3)
<i>V</i> (Å ³)	3832.5 (2)
<i>Z</i>	8
Radiation type	Mo <i>K</i> α
μ (mm ⁻¹)	0.20
Crystal size (mm)	0.42 × 0.32 × 0.18
Data collection	
Diffractometer	Agilent Xcalibur Eos Gemini
Absorption correction	Multi-scan (<i>CrysAlis PRO</i> ; Agilent, 2014)
<i>T_{min}</i> , <i>T_{max}</i>	0.757, 0.965
No. of measured, independent and observed [<i>I</i> > 2σ(<i>I</i>)] reflections	9963, 4419, 3426
<i>R_{int}</i>	0.024
(sin θ/λ) _{max} (Å ⁻¹)	0.651
Refinement	
<i>R</i> [<i>F</i> ² > 2σ(<i>F</i> ²)], <i>wR</i> (<i>F</i> ²), <i>S</i>	0.043, 0.113, 1.04
No. of reflections	4419
No. of parameters	262
H-atom treatment	H atoms treated by a mixture of independent and constrained refinement
$\Delta\rho_{\text{max}}$, $\Delta\rho_{\text{min}}$ (e Å ⁻³)	0.24, -0.26

Computer programs: *CrysAlis PRO* (Agilent, 2014), *SHELXS97* (Sheldrick, 2008), *SHELXL2014* (Sheldrick, 2015) and *PLATON* (Spek, 2009).

ture of (*E*)-*N'*-[1-(2-hydroxyphenyl)ethylidene]-3-methoxybenzohydrazide the molecules are linked by a single N—H...O hydrogen bond to form simple *C*(4) chains (Li & Ban, 2009); and the molecules of (*E*)-*N'*-(4-hydroxybenzylidene)-3-nitrobenzohydrazide are linked into sheets by a combination of N—H...O, O—H...*N*(O) and C—H...O hydrogen bonds (Meng *et al.*, 2012).

5. Synthesis and crystallization

A mixture of 2-benzoylamino-3-(thiophen-2-yl)prop-2-enoylhydrazine (2.87 g, 0.01 mol), and 4-hydroxybenzaldehyde (1.22 g, 0.01 mol) in ethanol (20 ml) was stirred at ambient temperature for 4 h. The resulting solid product was collected by filtration, washed with cold water, dried in air and recrystallized from ethanol solution: m.p. 534–535 K. Crystals of (*I*) were grown by slow evaporation at room temperature of a solution in 1,4-dioxane-methanol (1:1, *v/v*).

6. Refinement

Crystal data, data collection and structure refinement details are summarized in Table 2. All H atoms were located in difference maps. The H atoms bonded to C atoms were then treated as riding atoms in geometrically idealized positions with C—H = 0.93 Å and with *U*_{iso}(H) = 1.2 *U*_{eq}(C). For the H atoms bonded to O or N atoms, the atomic coordinates were refined with *U*_{iso}(H) = 1.2 *U*_{eq}(N) or 1.5 *U*_{eq}(O), giving the O—H and N—H distances shown in Table 1.

Acknowledgements

KNS gratefully acknowledges the Department of Chemistry, Shri Madhwa Vadiraja Institute of Technology, Bantakal (VTU Belgam) for providing research facilities. JPJ acknowledges the NSF–MRI program (grant No. 1039027) for funds to purchase the X-ray diffractometer.

References

- Agilent (2014). *CrysAlis PRO*. Agilent Technologies Ltd, Yarnton, England.
- Desai, S. B., Desai, P. B. & Desai, K. R. (2001). *Heterocycl. Commun.* **7**, 83–90.
- Desiraju, G. R. & Steiner, T. (1999). In *The Weak Hydrogen Bond*. Oxford University Press.
- Ferguson, G., Glidewell, C., Gregson, R. M. & Meehan, P. R. (1998*a*). *Acta Cryst.* **B54**, 129–138.
- Ferguson, G., Glidewell, C., Gregson, R. M. & Meehan, P. R. (1998*b*). *Acta Cryst.* **B54**, 139–150.
- Galvez, J., Quiroga, J., Cobo, J., Low, J. N. & Glidewell, C. (2008). *Acta Cryst.* **C64**, o385–o387.
- Glidewell, C., Low, J. N., Marchal, A., Melguizo, M. & Quesada, A. (2002). *Acta Cryst.* **C58**, o655–o657.
- Glidewell, C., Low, J. N. & Wardell, J. L. (2005). *Acta Cryst.* **C61**, o57–o59.
- Gregson, R. M., Glidewell, C., Ferguson, G. & Lough, A. J. (2000). *Acta Cryst.* **B56**, 39–57.
- Li, C.-M. & Ban, H.-Y. (2009). *Acta Cryst.* **E65**, o876.
- Meng, X.-F., Wang, D.-Y. & Ma, J.-J. (2012). *Acta Cryst.* **E68**, o20.
- Pandeya, S. N., Sriram, D., Nath, G. & De Clercq, E. (1999). *Farmaco*, **54**, 624–628.
- Quesada, A., Low, J. N., Melguizo, M., Nogueras, M. & Glidewell, C. (2002). *Acta Cryst.* **C58**, o355–o358.
- Sheldrick, G. M. (2008). *Acta Cryst.* **A64**, 112–122.
- Sheldrick, G. M. (2015). *Acta Cryst.* **C71**, 3–8.
- Singh, W. M. & Dash, B. C. (1988). *Pesticides*, **22**, 33–37.
- Spek, A. L. (2009). *Acta Cryst.* **D65**, 148–155.
- Subbulakshmi, K. N., Narayana, B., Yathirajan, H. S., Akkurt, M., Çelik, Ö., Ersanlı, C. & Glidewell, C. (2015). *Acta Cryst.* **C71**, 742–751.
- Todeschini, A. R., de Miranda, A. L. P., da Silva, K. C. M., Parrini, S. C. & Barreiro, E. J. (1998). *Eur. J. Med. Chem.* **33**, 189–199.

supporting information

Acta Cryst. (2016). E72, 1099-1102 [https://doi.org/10.1107/S2056989016010975]

Crystal structure of 2-benzoylamino-*N'*-(4-hydroxybenzylidene)-3-(thiophen-2-yl)prop-2-enohydrazide

Karant N. Subbulakshmi, Badiadka Narayana, Hemmige S. Yathirajan, Jerry P. Jasinski, Ravindranath S. Rathore and Christopher Glidewell

Computing details

Data collection: *CrysAlis PRO* (Agilent, 2014); cell refinement: *CrysAlis PRO* (Agilent, 2014); data reduction: *CrysAlis PRO* (Agilent, 2014); program(s) used to solve structure: *SHELXS97* (Sheldrick, 2008); program(s) used to refine structure: *SHELXL2014* (Sheldrick, 2015); molecular graphics: *PLATON* (Spek, 2009).

2-Benzoylamino-*N'*-(4-hydroxybenzylidene)-3-(thiophen-2-yl)prop-2-enohydrazide

Crystal data

$C_{21}H_{17}N_3O_3S$

$M_r = 391.43$

Monoclinic, $C2/c$

$a = 22.5212$ (7) Å

$b = 10.1879$ (4) Å

$c = 17.3592$ (5) Å

$\beta = 105.801$ (3)°

$V = 3832.5$ (2) Å³

$Z = 8$

$F(000) = 1632$

$D_x = 1.357$ Mg m⁻³

Mo $K\alpha$ radiation, $\lambda = 0.71073$ Å

Cell parameters from 6327 reflections

$\theta = 3.4\text{--}32.0^\circ$

$\mu = 0.20$ mm⁻¹

$T = 298$ K

Plate, colourless

$0.42 \times 0.32 \times 0.18$ mm

Data collection

Agilent Xcalibur Eos Gemini
diffractometer

Detector resolution: 16.0416 pixels mm⁻¹

φ and ω scans

Absorption correction: multi-scan
(*CrysAlis PRO*; Agilent, 2014)

$T_{\min} = 0.757$, $T_{\max} = 0.965$

9963 measured reflections

4419 independent reflections

3426 reflections with $I > 2\sigma(I)$

$R_{\text{int}} = 0.024$

$\theta_{\max} = 27.6^\circ$, $\theta_{\min} = 3.4^\circ$

$h = -25 \rightarrow 29$

$k = -13 \rightarrow 7$

$l = -20 \rightarrow 22$

Refinement

Refinement on F^2

Least-squares matrix: full

$R[F^2 > 2\sigma(F^2)] = 0.043$

$wR(F^2) = 0.113$

$S = 1.04$

4419 reflections

262 parameters

0 restraints

Hydrogen site location: mixed

H atoms treated by a mixture of independent
and constrained refinement

$w = 1/[\sigma^2(F_o^2) + (0.0475P)^2 + 2.5641P]$

where $P = (F_o^2 + 2F_c^2)/3$

$(\Delta/\sigma)_{\max} = 0.001$

$\Delta\rho_{\max} = 0.24$ e Å⁻³

$\Delta\rho_{\min} = -0.26$ e Å⁻³

Special details

Geometry. All esds (except the esd in the dihedral angle between two l.s. planes) are estimated using the full covariance matrix. The cell esds are taken into account individually in the estimation of esds in distances, angles and torsion angles; correlations between esds in cell parameters are only used when they are defined by crystal symmetry. An approximate (isotropic) treatment of cell esds is used for estimating esds involving l.s. planes.

Fractional atomic coordinates and isotropic or equivalent isotropic displacement parameters (\AA^2)

	<i>x</i>	<i>y</i>	<i>z</i>	$U_{\text{iso}}^*/U_{\text{eq}}$
C1	0.53659 (7)	0.43211 (16)	0.64694 (9)	0.0306 (3)
O1	0.56722 (5)	0.47222 (13)	0.71288 (7)	0.0423 (3)
C2	0.47457 (7)	0.48794 (16)	0.60847 (9)	0.0299 (3)
C3	0.43369 (7)	0.43455 (17)	0.54526 (9)	0.0347 (4)
H3	0.4469	0.3586	0.5252	0.042*
N11	0.55560 (6)	0.33591 (15)	0.60668 (8)	0.0348 (3)
H11	0.5363 (9)	0.3157 (19)	0.5583 (12)	0.042*
N12	0.61135 (6)	0.27363 (15)	0.63980 (8)	0.0350 (3)
C17	0.62189 (8)	0.17766 (18)	0.59827 (10)	0.0372 (4)
H17	0.5924	0.1570	0.5509	0.045*
C11	0.67784 (7)	0.09896 (17)	0.62156 (10)	0.0349 (4)
C12	0.72750 (8)	0.13084 (18)	0.68643 (10)	0.0382 (4)
H12	0.7261	0.2068	0.7156	0.046*
C13	0.77876 (8)	0.05097 (19)	0.70785 (10)	0.0393 (4)
H13	0.8115	0.0730	0.7515	0.047*
C14	0.78174 (8)	−0.06236 (18)	0.66441 (10)	0.0373 (4)
O14	0.83122 (6)	−0.14325 (14)	0.68163 (9)	0.0524 (4)
H14	0.8583 (12)	−0.115 (3)	0.7211 (15)	0.079*
C15	0.73300 (8)	−0.09439 (18)	0.59955 (11)	0.0436 (4)
H15	0.7346	−0.1700	0.5701	0.052*
C16	0.68189 (8)	−0.01392 (19)	0.57854 (10)	0.0421 (4)
H16	0.6494	−0.0358	0.5345	0.050*
N21	0.45947 (6)	0.60302 (14)	0.64533 (8)	0.0326 (3)
H21	0.4510 (9)	0.5932 (19)	0.6884 (11)	0.039*
C27	0.46800 (7)	0.72320 (17)	0.61800 (9)	0.0314 (3)
O27	0.49198 (6)	0.73798 (13)	0.56269 (7)	0.0435 (3)
C21	0.44374 (8)	0.83722 (17)	0.65374 (9)	0.0360 (4)
C22	0.40355 (9)	0.8231 (2)	0.70116 (12)	0.0497 (5)
H22	0.3933	0.7395	0.7149	0.060*
C23	0.37867 (11)	0.9317 (3)	0.72807 (14)	0.0642 (6)
H23	0.3519	0.9210	0.7600	0.077*
C24	0.39294 (12)	1.0539 (2)	0.70834 (14)	0.0676 (7)
H24	0.3756	1.1267	0.7263	0.081*
C25	0.43304 (14)	1.0707 (2)	0.66171 (15)	0.0737 (7)
H25	0.4430	1.1548	0.6485	0.088*
C26	0.45857 (11)	0.9615 (2)	0.63441 (12)	0.0551 (5)
H26	0.4857	0.9727	0.6030	0.066*
S31	0.33408 (2)	0.61148 (5)	0.52709 (3)	0.04314 (14)
C32	0.37235 (8)	0.47716 (18)	0.50374 (10)	0.0367 (4)

C33	0.33582 (9)	0.4137 (2)	0.43779 (12)	0.0518 (5)
H33	0.3482	0.3392	0.4153	0.062*
C34	0.27760 (9)	0.4737 (3)	0.40789 (12)	0.0597 (6)
H34	0.2473	0.4425	0.3640	0.072*
C35	0.27068 (9)	0.5808 (2)	0.44974 (12)	0.0533 (5)
H35	0.2353	0.6323	0.4378	0.064*

Atomic displacement parameters (\AA^2)

	U^{11}	U^{22}	U^{33}	U^{12}	U^{13}	U^{23}
C1	0.0294 (8)	0.0327 (8)	0.0303 (7)	0.0004 (6)	0.0090 (6)	0.0012 (6)
O1	0.0340 (6)	0.0506 (8)	0.0378 (6)	0.0050 (5)	0.0019 (5)	−0.0115 (6)
C2	0.0310 (8)	0.0298 (8)	0.0301 (7)	0.0047 (6)	0.0107 (6)	0.0002 (6)
C3	0.0330 (8)	0.0346 (9)	0.0370 (8)	0.0039 (7)	0.0103 (7)	−0.0042 (7)
N11	0.0316 (7)	0.0407 (8)	0.0293 (6)	0.0108 (6)	0.0037 (6)	−0.0008 (6)
N12	0.0307 (7)	0.0406 (8)	0.0335 (7)	0.0096 (6)	0.0086 (6)	0.0043 (6)
C17	0.0346 (8)	0.0429 (10)	0.0323 (8)	0.0077 (7)	0.0062 (7)	0.0036 (7)
C11	0.0338 (8)	0.0383 (9)	0.0330 (8)	0.0069 (7)	0.0097 (7)	0.0043 (7)
C12	0.0378 (9)	0.0399 (10)	0.0368 (8)	0.0055 (7)	0.0103 (7)	−0.0036 (7)
C13	0.0332 (8)	0.0485 (11)	0.0335 (8)	0.0033 (8)	0.0047 (7)	0.0003 (8)
C14	0.0337 (8)	0.0367 (9)	0.0401 (9)	0.0080 (7)	0.0078 (7)	0.0092 (7)
O14	0.0425 (7)	0.0490 (8)	0.0558 (8)	0.0182 (6)	−0.0034 (6)	−0.0021 (7)
C15	0.0417 (10)	0.0354 (10)	0.0488 (10)	0.0076 (8)	0.0043 (8)	−0.0061 (8)
C16	0.0360 (9)	0.0439 (11)	0.0402 (9)	0.0058 (8)	0.0000 (7)	−0.0040 (8)
N21	0.0376 (7)	0.0343 (8)	0.0279 (6)	0.0073 (6)	0.0123 (6)	−0.0011 (6)
C27	0.0296 (8)	0.0349 (9)	0.0266 (7)	0.0033 (6)	0.0023 (6)	−0.0035 (6)
O27	0.0537 (8)	0.0439 (8)	0.0375 (6)	−0.0012 (6)	0.0203 (6)	−0.0028 (5)
C21	0.0363 (9)	0.0357 (9)	0.0305 (8)	0.0061 (7)	−0.0002 (7)	−0.0061 (7)
C22	0.0499 (11)	0.0483 (12)	0.0534 (11)	0.0079 (9)	0.0185 (9)	−0.0102 (9)
C23	0.0613 (14)	0.0656 (16)	0.0688 (14)	0.0177 (12)	0.0231 (11)	−0.0200 (12)
C24	0.0798 (17)	0.0531 (14)	0.0641 (14)	0.0248 (12)	0.0095 (12)	−0.0189 (11)
C25	0.108 (2)	0.0359 (12)	0.0719 (15)	0.0058 (13)	0.0156 (15)	−0.0041 (11)
C26	0.0741 (15)	0.0385 (11)	0.0527 (11)	0.0012 (10)	0.0175 (11)	−0.0040 (9)
S31	0.0342 (2)	0.0489 (3)	0.0449 (3)	0.00813 (19)	0.00828 (18)	−0.0011 (2)
C32	0.0326 (8)	0.0431 (10)	0.0338 (8)	0.0015 (7)	0.0080 (7)	−0.0027 (7)
C33	0.0381 (10)	0.0649 (14)	0.0475 (10)	0.0022 (9)	0.0034 (8)	−0.0158 (9)
C34	0.0363 (10)	0.0921 (18)	0.0430 (10)	0.0006 (11)	−0.0025 (8)	−0.0101 (11)
C35	0.0328 (9)	0.0762 (15)	0.0471 (11)	0.0103 (9)	0.0047 (8)	0.0074 (10)

Geometric parameters (\AA , $^\circ$)

C1—O1	1.2342 (19)	N21—C27	1.346 (2)
C1—N11	1.340 (2)	N21—H21	0.826 (19)
C1—C2	1.487 (2)	C27—O27	1.2322 (19)
C2—C3	1.341 (2)	C27—C21	1.489 (2)
C2—N21	1.421 (2)	C21—C26	1.374 (3)
C3—C32	1.440 (2)	C21—C22	1.387 (3)
C3—H3	0.9300	C22—C23	1.378 (3)

N11—N12	1.3844 (18)	C22—H22	0.9300
N11—H11	0.859 (19)	C23—C24	1.353 (4)
N12—C17	1.275 (2)	C23—H23	0.9300
C17—C11	1.455 (2)	C24—C25	1.378 (4)
C17—H17	0.9300	C24—H24	0.9300
C11—C16	1.388 (2)	C25—C26	1.394 (3)
C11—C12	1.392 (2)	C25—H25	0.9300
C12—C13	1.378 (2)	C26—H26	0.9300
C12—H12	0.9300	S31—C35	1.702 (2)
C13—C14	1.391 (3)	S31—C32	1.7235 (18)
C13—H13	0.9300	C32—C33	1.376 (2)
C14—O14	1.352 (2)	C33—C34	1.411 (3)
C14—C15	1.381 (2)	C33—H33	0.9300
O14—H14	0.84 (3)	C34—C35	1.343 (3)
C15—C16	1.379 (2)	C34—H34	0.9300
C15—H15	0.9300	C35—H35	0.9300
C16—H16	0.9300		
O1—C1—N11	123.27 (15)	C27—N21—H21	121.3 (14)
O1—C1—C2	120.61 (15)	C2—N21—H21	116.8 (14)
N11—C1—C2	116.11 (13)	O27—C27—N21	121.39 (15)
C3—C2—N21	120.54 (14)	O27—C27—C21	121.18 (16)
C3—C2—C1	124.32 (15)	N21—C27—C21	117.32 (14)
N21—C2—C1	115.10 (13)	C26—C21—C22	118.82 (18)
C2—C3—C32	129.69 (16)	C26—C21—C27	118.41 (17)
C2—C3—H3	115.2	C22—C21—C27	122.62 (17)
C32—C3—H3	115.2	C23—C22—C21	120.6 (2)
C1—N11—N12	120.08 (13)	C23—C22—H22	119.7
C1—N11—H11	122.5 (13)	C21—C22—H22	119.7
N12—N11—H11	117.2 (13)	C24—C23—C22	120.5 (2)
C17—N12—N11	113.83 (14)	C24—C23—H23	119.8
N12—C17—C11	123.09 (15)	C22—C23—H23	119.8
N12—C17—H17	118.5	C23—C24—C25	120.1 (2)
C11—C17—H17	118.5	C23—C24—H24	119.9
C16—C11—C12	118.20 (15)	C25—C24—H24	119.9
C16—C11—C17	119.08 (15)	C24—C25—C26	119.9 (2)
C12—C11—C17	122.71 (16)	C24—C25—H25	120.1
C13—C12—C11	120.66 (17)	C26—C25—H25	120.1
C13—C12—H12	119.7	C21—C26—C25	120.2 (2)
C11—C12—H12	119.7	C21—C26—H26	119.9
C12—C13—C14	120.29 (16)	C25—C26—H26	119.9
C12—C13—H13	119.9	C35—S31—C32	91.97 (10)
C14—C13—H13	119.9	C33—C32—C3	123.35 (17)
O14—C14—C15	117.42 (17)	C33—C32—S31	110.17 (14)
O14—C14—C13	123.00 (16)	C3—C32—S31	126.48 (13)
C15—C14—C13	119.57 (15)	C32—C33—C34	112.82 (19)
C14—O14—H14	110.1 (19)	C32—C33—H33	123.6
C16—C15—C14	119.75 (17)	C34—C33—H33	123.6

C16—C15—H15	120.1	C35—C34—C33	112.70 (18)
C14—C15—H15	120.1	C35—C34—H34	123.7
C15—C16—C11	121.52 (16)	C33—C34—H34	123.7
C15—C16—H16	119.2	C34—C35—S31	112.35 (15)
C11—C16—H16	119.2	C34—C35—H35	123.8
C27—N21—C2	121.16 (13)	S31—C35—H35	123.8
O1—C1—C2—C3	−166.88 (16)	C2—N21—C27—O27	−3.6 (2)
N11—C1—C2—C3	11.8 (2)	C2—N21—C27—C21	172.62 (13)
O1—C1—C2—N21	11.0 (2)	O27—C27—C21—C26	−11.9 (2)
N11—C1—C2—N21	−170.33 (14)	N21—C27—C21—C26	171.89 (16)
N21—C2—C3—C32	1.0 (3)	O27—C27—C21—C22	163.63 (16)
C1—C2—C3—C32	178.77 (16)	N21—C27—C21—C22	−12.6 (2)
O1—C1—N11—N12	1.9 (3)	C26—C21—C22—C23	0.3 (3)
C2—C1—N11—N12	−176.74 (14)	C27—C21—C22—C23	−175.14 (17)
C1—N11—N12—C17	175.03 (16)	C21—C22—C23—C24	0.3 (3)
N11—N12—C17—C11	179.60 (16)	C22—C23—C24—C25	−0.6 (4)
N12—C17—C11—C16	171.54 (17)	C23—C24—C25—C26	0.4 (4)
N12—C17—C11—C12	−7.3 (3)	C22—C21—C26—C25	−0.5 (3)
C16—C11—C12—C13	−1.0 (3)	C27—C21—C26—C25	175.14 (18)
C17—C11—C12—C13	177.86 (16)	C24—C25—C26—C21	0.1 (4)
C11—C12—C13—C14	0.5 (3)	C2—C3—C32—C33	178.32 (19)
C12—C13—C14—O14	178.76 (17)	C2—C3—C32—S31	−1.3 (3)
C12—C13—C14—C15	0.1 (3)	C35—S31—C32—C33	0.22 (16)
O14—C14—C15—C16	−178.83 (17)	C35—S31—C32—C3	179.89 (17)
C13—C14—C15—C16	−0.1 (3)	C3—C32—C33—C34	179.77 (18)
C14—C15—C16—C11	−0.5 (3)	S31—C32—C33—C34	−0.6 (2)
C12—C11—C16—C15	1.0 (3)	C32—C33—C34—C35	0.7 (3)
C17—C11—C16—C15	−177.89 (18)	C33—C34—C35—S31	−0.5 (3)
C3—C2—N21—C27	−86.1 (2)	C32—S31—C35—C34	0.18 (18)
C1—C2—N21—C27	95.92 (17)		

Hydrogen-bond geometry (\AA , $^\circ$)

$D\cdots H\cdots A$	$D\cdots H$	$H\cdots A$	$D\cdots A$	$D\cdots H\cdots A$
N11—H11 \cdots O27 ⁱ	0.86 (2)	2.10 (2)	2.9400 (18)	168 (2)
N21—H21 \cdots O1 ⁱⁱ	0.827 (19)	2.238 (19)	3.0002 (18)	153.5 (18)
O14—H14 \cdots O1 ⁱⁱⁱ	0.84 (3)	1.97 (3)	2.7727 (19)	162 (3)
O14—H14 \cdots N12 ⁱⁱⁱ	0.84 (3)	2.59 (3)	3.133 (2)	124 (2)
C3—H3 \cdots O27 ⁱ	0.93	2.52	3.333 (2)	147
C17—H17 \cdots O27 ⁱ	0.93	2.57	3.350 (2)	142
C24—H24 \cdots O14 ^{iv}	0.93	2.58	3.364 (3)	142

Symmetry codes: (i) $-x+1, -y+1, -z+1$; (ii) $-x+1, y, -z+3/2$; (iii) $-x+3/2, y-1/2, -z+3/2$; (iv) $x-1/2, y+3/2, z$.