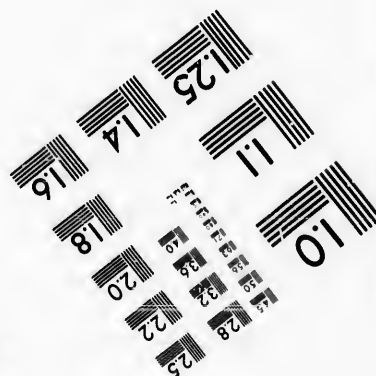
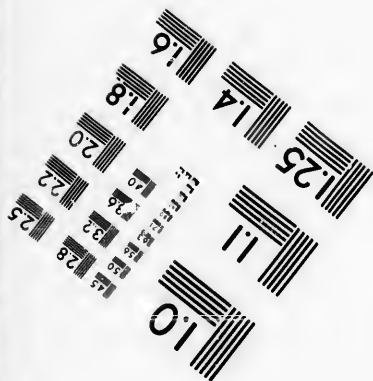
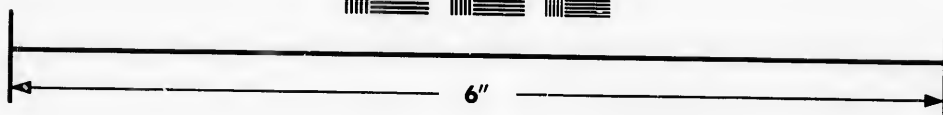
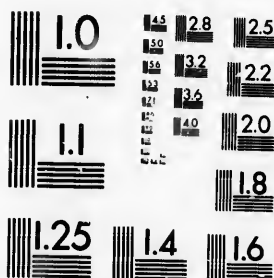


IMAGE EVALUATION TEST TARGET (MT-3)



Photographic
Sciences
Corporation

23 WEST MAIN STREET
WEBSTER, N.Y. 14580
(716) 872-4503

**CIHM/ICMH
Microfiche
Series.**

**CIHM/ICMH
Collection de
microfiches.**



Canadian Institute for Historical Microreproductions / Institut canadien de microreproductions historiques

© 1986

Technical and Bibliographic Notes/Notes techniques et bibliographiques

The Institute has attempted to obtain the best original copy available for filming. Features of this copy which may be bibliographically unique, which may alter any of the images in the reproduction, or which may significantly change the usual method of filming, are checked below.

L'Institut a microfilmé le meilleur exemplaire qu'il lui a été possible de se procurer. Les détails de cet exemplaire qui sont peut-être uniques du point de vue bibliographique, qui peuvent modifier une image reproduite, ou qui peuvent exiger une modification dans la méthode normale de filmage sont indiqués ci-dessous.

- ☐ Coloured covers/
Couverture de couleur
- ☐ Covers damaged/
Couverture endommagée
- ☐ Covers restored and/or laminated/
Couverture restaurée et/ou pelliculée
- ☐ Cover title missing/
Le titre de couverture manque
- ☐ Coloured maps/
Cartes géographiques en couleur
- ☐ Coloured ink (i.e. other than blue or black)/
Encre de couleur (i.e. autre que bleue ou noire)
- ☐ Coloured plates and/or illustrations/
Planches et/ou illustrations en couleur
- ☒ Bound with other material/
Relié avec d'autres documents
- ☐ Tight binding may cause shadows or distortion
along interior margin/
La reliure serrée peut causer de l'ombre ou de la
distorsion le long de la marge intérieure
- ☐ Blank leaves added during restoration may
appear within the text. Whenever possible, these
have been omitted from filming/
Il se peut que certaines pages blanches ajoutées
lors d'une restauration apparaissent dans le texte,
mais, lorsque cela était possible, ces pages n'ont
pas été filmées.
- ☐ Additional comments:
Commentaires supplémentaires:

- ☐ Coloured pages/
Pages de couleur
- ☒ Pages damaged/
Pages endommagées
- ☐ Pages restored and/or laminated/
Pages restaurées et/ou pelliculées
- ☒ Pages discoloured, stained or foxed/
Pages décolorées, tachetées ou piquées
- ☐ Pages detached/
Pages détachées
- ☒ Showthrough/
Transparence
- ☐ Quality of print varies/
Qualité inégale de l'impression
- ☐ Includes supplementary material/
Comprend du matériel supplémentaire
- ☐ Only edition available/
Seule édition disponible
- ☐ Pages wholly or partially obscured by errata
slips, tissues, etc., have been refilmed to
ensure the best possible image/
Les pages totalement ou partiellement
obscurcies par un feuillet d'errata, une pelure,
etc., ont été filmées à nouveau de façon à
obtenir la meilleure image possible.

This item is filmed at the reduction ratio checked below/
Ce document est filmé au taux de réduction indiqué ci-dessous.

10X	14X	18X	22X	26X	30X
<input type="checkbox"/>	<input type="checkbox"/>	<input type="checkbox"/>	<input checked="" type="checkbox"/>	<input type="checkbox"/>	<input type="checkbox"/>
12X	16X	20X	24X	28X	32X

re
détails
es du
modifier
er une
l'image

The copy filmed here has been reproduced thanks to the generosity of:

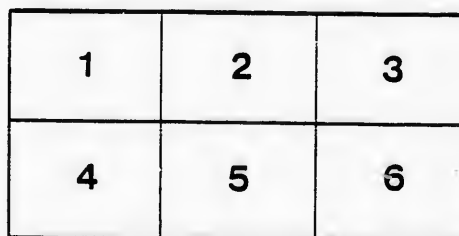
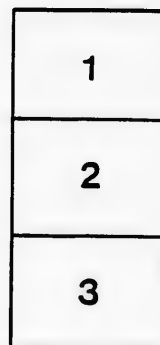
Library
Agriculture Canada

The images appearing here are the best quality possible considering the condition and legibility of the original copy and in keeping with the filming contract specifications.

Original copies in printed paper covers are filmed beginning with the front cover and ending on the last page with a printed or illustrated impression, or the back cover when appropriate. All other original copies are filmed beginning on the first page with a printed or illustrated impression, and ending on the last page with a printed or illustrated impression.

The last recorded frame on each microfiche shall contain the symbol ➡ (meaning "CONTINUED"), or the symbol ▼ (meaning "END"), whichever applies.

Maps, plates, charts, etc., may be filmed at different reduction ratios. Those too large to be entirely included in one exposure are filmed beginning in the upper left hand corner, left to right and top to bottom, as many frames as required. The following diagrams illustrate the method:



L'exemplaire filmé fut reproduit grâce à la générosité de:

Bibliothèque
Agriculture Canada

Les images suivantes ont été reproduites avec le plus grand soin, compte tenu de la condition et de la netteté de l'exemplaire filmé, et en conformité avec les conditions du contrat de filmage.

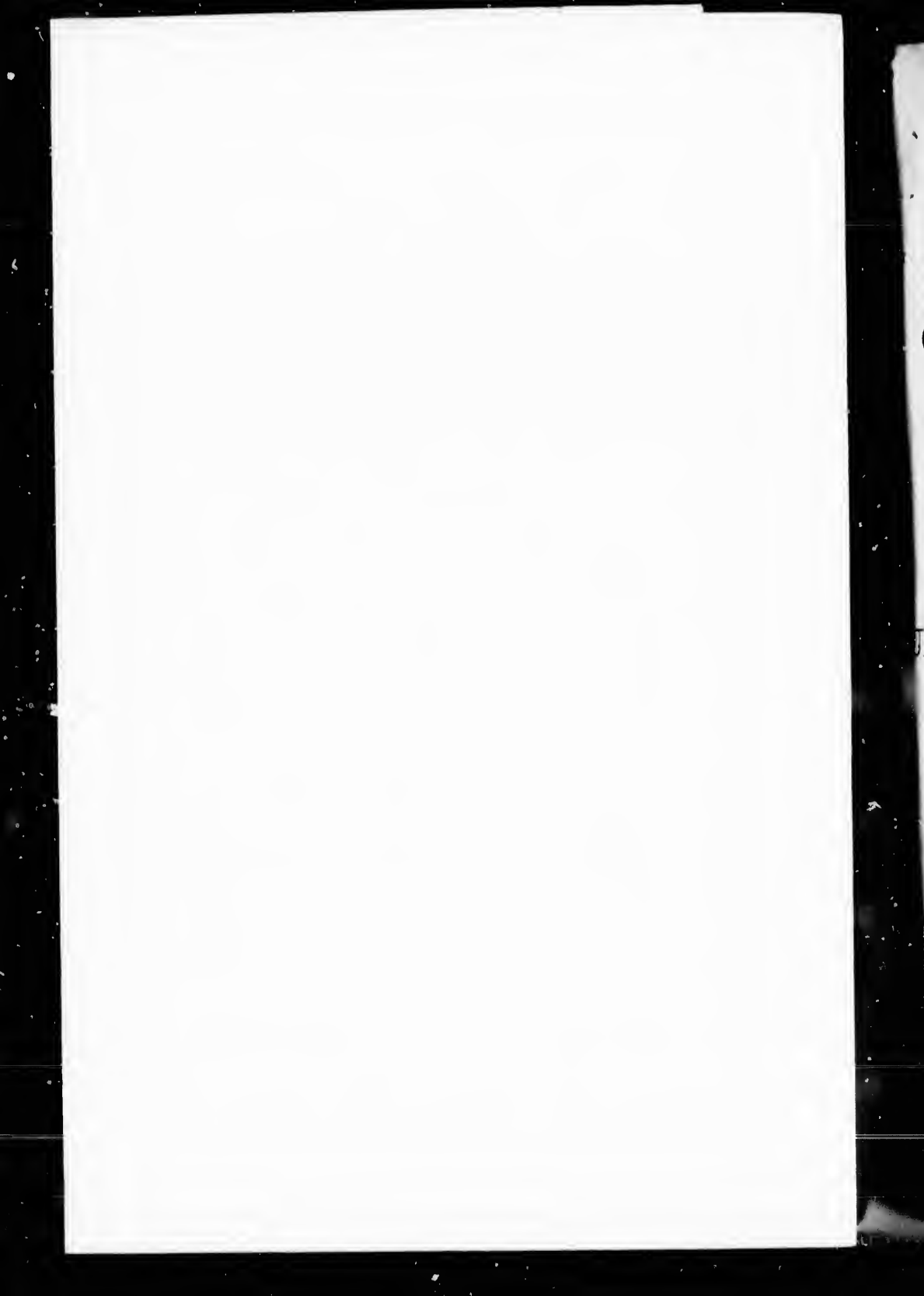
Les exemplaires originaux dont la couverture en papier est imprimée sont filmés en commençant par le premier plat et en terminant soit par la dernière page qui comporte une empreinte d'impression ou d'illustration, soit par le second plat, selon le cas. Tous les autres exemplaires originaux sont filmés en commençant par la première page qui comporte une empreinte d'impression ou d'illustration et en terminant par la dernière page qui comporte une telle empreinte.

Un des symboles suivants apparaîtra sur la dernière image de chaque microfiche, selon le cas: le symbole ➡ signifie "A SUIVRE", le symbole ▼ signifie "FIN".

Les cartes, planches, tableaux, etc., peuvent être filmés à des taux de réduction différents. Lorsque le document est trop grand pour être reproduit en un seul cliché, il est filmé à partir de l'angle supérieur gauche, de gauche à droite, et de haut en bas, en prenant le nombre d'images nécessaire. Les diagrammes suivants illustrent la méthode.

errata
to

pelure,
on à



7
7

CATAL

OF

CANADIAN PLANTS

IN THE

HOLMES' HERBARIUM,

IN THE CABINET OF THE

UNIVERSITY OF M^cGILL COLLEGE.

PREPARED BY THE LATE
PROF. JAMES BARNSTON, M.D.

Extracted from the April number of the CANADIAN NATURALIST.)

Montreal:
PRINTED BY JOHN LOVELL, ST. NICHOLAS STREET.
1859.

7

CATAL

OF

CANADIAN PLANTS

IN THE

HOLMES' HERBARIUM,

IN THE CABINET OF THE

UNIVERSITY OF M^cGILL COLLEGE.

PREPARED BY THE LATE
PROF. JAMES BARNSTON, M.D.

Extracted from the April number of the CANADIAN NATURALIST.)

Montreal :
PRINTED BY JOHN LOVELL, ST. NICHOLAS STREET.
1859.

2

2

C

[I
were
the y
to th
an e
plete
Unde
acco
mod
his in
to ha
In it
but it
as a
Mont
betwe
the S
of soi
tions
also
afford

CATALOGUE

OF

CANADIAN PLANTS.

[INTRODUCTORY NOTE.—The plants comprising this herbarium were collected and determined by Prof. A. F. Holmes, M. D., in the year 1820 and following years, and were presented by him to the University in 1856. They are admirably prepared and in an excellent state of preservation, and represent in a very complete manner the Flora of the Island of Montreal and its vicinity. Under the care of the late Prof. Barnston, they were arranged according to the classification of Gray; the nomenclature was modernized, and a catalogue partly prepared, to which it was his intention to have added the results of his own researches, and to have published the whole as a synopsis of the Flora of Montreal. In its present form, the catalogue falls far short of this design; but it is hoped that its publication may nevertheless be regarded as a useful contribution to Canadian Botany. The Island of Montreal is geographically a very important station. Situated between the parallels of 45° and 46° N. lat., at the confluence of the St. Lawrence and the Ottawa, and presenting a great variety of soil and elevation, it affords an epitome of the botanical conditions of the middle region of Canada. The present collection also derives additional interest from the circumstance, that it affords many localities of species which have become locally

extinct, owing to the progress of cultivation and the extension of the city. Lastly, the herbarium of the College being arranged in such a manner as to be easily accessible, it is hoped that the present catalogue may make it more useful to students of botany, and that it may form a groundwork for a complete Flora of the vicinity of Montreal.

The names in the catalogue are those attached to the specimens by Dr. Holmes. The more modern names, where any change has occurred, are added with the initials J. B. The Grasses and Cariees of the collection, and a separate collection of Forest Trees and Shrubs, still remain unarranged, and will, if possible, be published in a supplementary list.—J. W. D.]

Ranunculaceæ.

- ✓ *Atragene Americana*. June 4, 1822. Mountain.
- ✓ *Clematis Virginica*. August 20, 1821. Below Hallowell's House.
- ✓ *Anemone Pennsylvanica*. June 16, 1821. Papineau Woods, &c.
- ✓ " *Virginiana*. July 8, 1821. Mountain.
- ✓ *Thalictrum dioicum*. Meadow Rue.
- ✓ " *cornuti*.
- ✓ *Hepatica triloba*. May 4, 1821. Mountain. = *acutidula*
- ✓ *Ranunculus filiformis*. August 13, 1821. St. Helen's Island.
(*R. flammula*, var. *reptans*, Gray, J. B.)
- ✓ *Ranunculus fluviatilis*. June 27, '21. River St. Pierre. (R. Purshii, Torr. and Gray, J. B.) = *acutidula* var. *viridis*
- ✓ *Ranunculus delphinifolius*. June 29, 1821. Laclède Woods.
(R. Purshii, Torr. and Gray, J. B.)
- ✓ *Ranunculus hirsutus*. July 23, 1821. Meadows near Gregory's.
(*R. Pennsylvanicus*, Linn., Gray, J. B.)
- ✓ *Ranunculus acris* (crowfoot, buttercup). June 18, 1821. Common.
- ✓ " *repens*. August 10, 1821. Common.
- ✓ " *abortivus*. June 21. Mountain.
- ✓ " *lanuginosus*. June 11, 1821. Mountain. (*R. recurvatus*, J. B.)
- ✓ *Coptis trifolia* (gold-thread). May 20, 1821. Mountain.
- ✓ *Caltha palustris* (marsh marigold). May 23, 1821. Meadows, &c.
- ✓ *Aquilegia Canadensis* (colombine). May 20, 1821. Mountain.
- ✓ *Actæa alba* (bane-berry). May 31, 1821. Mountain.
- ✓ " *rubra*. May 15, 1821. Papineau Road.

Menispermaceæ.

- ✓ *Menispermum Canadense* (moonseed). July 19, 1821. St. Martin.

Berberidaceæ.

- ✓ *Podophyllum peltatum* (may-apple). 1821. In a garden, at Nicholson's, on the mountain.

Cabombaceæ.

- ✓ *Hydropeltis purpurea* (water shield). Sept. 3, 1821. River, near Point St. Charles. (*Brasenia peltata*, Pursh, J. B.)

Nymphaeaceae.

- Nymphaea odorata* (pond-lily). July 23, 1821. Mouth of St. Pierre.
Nuphar advena (yellow pond-lily). July 23, 1821. River St. Pierre, &c.

Sarraceniacae.

- Sarracenia purpurea* (pitcher-plant, Indian cup). June, 1820. Savanne, St. Michel.

Papaveraceae.

- Chelidonium majus* (celandine). Roadside. 1821.
Sanguinaria Canadensis (blood-root). May 15, 1821. Mountain, Papineau Woods.

Fumariaceae.

- Corydalis glauca*. June 16, 1821. Papineau Road.
 " *Canadensis* (squirrel corn). May 7, 1822. Mountain. (*Dicentra Canadensis*, DC. Gray. J. B.)
Corydalis encullaria (Dutchman's breeches). May 7, 1822. Mountain. (*Dicentra cucullaria*, DC. Gray. J. B.)

Cruciferae.

- Nasturtium amphibium*. Br. and DC. July 23, 1821. Gregory's Creek.
Sisymbrium (*Nasturtium*) *palustre*. July 21, 1821. In a yard.
Dentaria diphylla (pepper-root). May 31, 1821. Mountain.
Cardamine Pennsylvania (bitter cress). June 7, 1822. Nuns' Island, Laehine Wood. (*C. hirsuta*, J. B.)
Turritis (*Arabis*) *laevigata*. June 22, 1821. Mountain. = *perfoliata*
Erysimum Barbarea (winter cress). June 6, 1821. Nichol's Gully. (*Barbarea vulgaris*, Torr.)
Sinapis alba (white mustard). 1821. Common. = *origina*
 " *nigra* (black mustard). 1821. Common. = *Barbarea*
Thlaspi bursa-pastoris (shepherd's purse). July 11, 1821. Common. (*Capsella*, Vent.)
 " *arvense*. July 21. Common.
 " *campestre* (*Lepidium campestre*). July 3, 1822. In a field, Three Rivers. = *loc. hibernica*
Lepidium Virginicum (wild pepper grass). Aug. 2, 1821. Roadside, Citadel Hill.

Capparidaceae.

- Cleome dodecandra*. Aug. 13, 1821. Shore St. Helen's. (*Polanisia graveolens*, Raf., Gray, J. B.)

Violaceae.

- Viola Canadensis* (Canada violet). May 31, 1821. Mountain, &c.
Viola pubescens (downy yellow violet). May 23, 1821. Papineau Woods.
 " *blanda* (sweet white violet). May 25, 1822. Savanne, &c.
 " *Selkirkii* (great-spurred violet). Goldie.
 " *striata* (pale violet). May 13, 1821. Swamp, St. Denis-st. = *curvata*
 " *cucullata* (common blue violet). Mountain.
 " *sagittata* (arrow-leaved violet). May 30, 1825. Nuns' Island, Berthier, &c.

Parnassiaceae.

- Parnassia Caroliniana*. 1820.

Hypericaceæ.

- *Hypericum ascyroides* (great St. John's-wort). July 29, 1821. Swamp, St Denis Street. (*H. pyramidatum*, Torr., J. B.)
- " *Canadense*. July 29, 1821. Meadows between Suburbs.
- " *perforatum* (common St. John's-wort). July 28, 1821. Swamp, St. Denis Street.
- " *corymbosum*. July 27, 1821. Swamp, St. Denis Street, et aliis, August 8, Gregory's Woods.
- *Hypericum Virginicum*. Aug. 11, 1821. Woods beyond Gregory's.
- " *sphaerocarpon*. July 9, 1821. Shore near River St. Pierre. (*H. hypericum*, J. B.) = *ellipticum*.
- " *parviflorum*. 1821. Papineau Woods. (*H. mutilum*, J. B.)

Caryophyllaceæ.

- *Alsine media* (chickweed). 1821. Common. (*Stellaria media*, Smith [sec Torrey], J. B.)
- *Stellaria graminea* (stitch-wort). June 29, 1821. Lachine Woods. (*S. longifolia*, J. B.)
- *Arenaria lateriflora*. June 16, 1821. Papineau Road. (*Mœhringia laterifolia*, Gray, J. B.)
- *Cerastium dichotomum*. June 25, 1821. Mountain. (*C. oblongifolium*, Torrey, J. B.) = *minarum*.
- " *vulgatum* (mouse-eared chickweed). June 16, 1821. Common.
- " *viscosum*. June 4, 1822. Mountain side.
- *Mollugo verticillata* (carpet weed). Sept. 27. (An immigrant from further south, Gray.)

Portulacaceæ.

- *Portulacca oleracea* (purslane). August 14, 1821. Common.
- *Claytonia Virginica* (spring beauty). May 7, 1822. Mountain. (Is not this *C. Caroliniana*, Michaux. J. B.)

Malvaceæ.

- *Malva rotundifolia* (Mallow). August 1, 1821. Common.

Oxalidaceæ.

- *Oxalis Dillenii* (wood-sorrel, sheep-sorrel). June 29, 1821. Very common. (*O. stricta*, J. B.)
- " *acetosella* (wood-sorrel). July 10, 1822. Woods near Montreal, Portages of Black River, Three Rivers.

Geraniaceæ.

- *Geranium Carolinianum* (Cranesbill), *maculatum*.
- " *Robertianum* (herb Robert) Isle aux Hurons.

Balsaminaceæ.

- *Impatiens noli-me-tangere* (balsamine). Aug. 9, 1821. Common in most brooks, (*I. fulva*, *I. biflora*, Pursh, J. B.)
- " *biflora*. Aug. 31, 1821. Mountain. (*I. pallida*, *I. noli-me-tangere*, Pursh and Michaux, J. B.)

Limnanthaceæ.

- *Flœrkea lacustris*. June 7, 1822. Nuns' Island. (*F. proserpinacoides*, Willd., Gray, J. B.)

Rutaceæ.

- *Zanthoxylum fraxineum* (pricky ash). June 3, 1821. Garden. (*Z. Americanum*.)

Anacardiaceæ.

- Rhus typhina* (stag's-horn sumach). July 18, 1821. Mountain.
 " *toxiceodendron* (poison ivy), var. *quercifolia*. June 20, 1821.
 Below McGillivray's.

Vitaceæ.

- Vitis riparia* (wild grape, winter grape). June 13, 1821. In an orchard. (*V. cordifolia*, var. *riparia*, J. B.)
Cissus hederacea (American ivy), Pursh. Sept. 18, 1821. Mountain. (*Ampelopsis quinquefolia*, Michaux, J. B.)

Rhamnaceæ.

- Rhamnus alnifolius* (buck-thorn). June 4, 1821. Savanne, St. Michel.

Celastraceæ.

- Celastrus scandens* (wax-work). June 13, 1821. Nichol's garden.

Sapindaceæ.

- Staphylea trifolia* (bladder-nut). July 19, 1821. St. Martins.
Acer saccharinum (sugar maple). June 5, '21. Above Cleghorn's.
 " *rubrum* (red maple). April 30, 1824, and Sept. 27.
 " *spicatum* (mountain maple). May 31, 1821. Mountain.

Polygalaceæ.

- Polygala verticillata* (milk-wort). Sept. 11, 1821. Boucheville
 " *paucifolia*, Blair. [Island.]

Leguminosæ.

- Trifolium repens* (white clover). July 8, 1821. Mountain.
 " *pratense* (red clover). June 13, 1821. Papineau Wood.
Astragalus Canadensis. Sept. 8, 1821. Island opposite Point St. Charles.
Hedysarum glutinosum. 1821. Papineau Wood. (*Desmodium nudiflorum*, DC.)
 " *acuminatum*. Aug. 2, 1821. Mountain, &c. (*Desmodium acuminatum*, DC.)
 " *Canadense*. July 18, 1821. Cross-road beyond the Tanneries. (*Desmodium Canadense*, DC.)
Vicia cracca (wild vetch). 1820.
Lathyrus stipulaceus (marsh vetchling). July 9, 1821. Shore, Chapman's Brewery. (*L. palustris*, var. *myrtifolius*.)
 " *venosus*. July 23, 1821. River St. Pierre.
 " *palustris* (marsh vetchling). July 14, 1821. St. Martin; also Three Rivers. (*Phaseolus diversifolius*, J. B.)
Vicia sativa (common vetch). July 21. Nichol's Gully.
Glycine apios (ground-nut). Aug. 22, 1821. Nichol's Gully, &c. (*Apios tuberosa*, Torrey.)
 " *monoica*. Aug. 20, 1821. Hollowell's, &c. (*Amphicar-pæa monoica*, Torrey.)

Rosaceæ.

- Prunus Pennsylvanica* (wild cherry). May 22, 1821. Nichol's. (*Cerasus Pennsylvanica*, J. B.)
 " *serotina* (choke cherry). May 29, '21. Nichol's. (?*Virginiana*.)
Spiræa latifolia (meadow sweet). Aug. 2, 1821. Papineau Woods. (*S. salicifolia*, Gray, J. B.)
 " *tomentosa*, second specimen. August 2, 1821, Papineau Woods, &c.
 " *opulifolia*, second specimen. July 19, 1821. St. Martin.

- Agrimonia eupatoria*. July 19, 1821. Below Quesnel's.
Sanguisorba Canadensis (Canadian burnet). 1820. Savanne.
Genm rivale (purple avens). June 11, 1821. Hallowell's, &c.
 " *album*. June 29, 1821. Lachine Woods. (G. Virginianum, Gray, J. B.)
 " *strictum* (Canadense). July 8, 1821. Mountain.
Potentilla anserina. June 18, 1821. Common.
 " *palustris*.
 " *fruticosa*. June 4, 1821. Savanne. July 14, 1821.
 " *tridentata*. July 2, 1822. Three Rivers.
 " *Norvegica*. July 19, 1821. Common.
 " *simplex* (cinquefoil). June 22, 1821. Field above Cimetière. (P. Canadensis.)
Fragaria Canadensis (Virginian strawberry). May 18, 1821. Common.
Dalibarda repens. July 14, 1821. Savanne et aliis.
Rubus villosus (blackberry). June 11, 1821. Mountain.
 " *strigosus* (wild raspberry). June 29, 1821. Lachine Wood.
 " *odoratus* (purple-flowering raspberry). June 22, 1821. Mountain.
 " *trivialis* (low blackberry). June 22, 1821. Mountain. (R. Canadensis, Gray, J. B.)
 " *triflorus* (dwarf raspberry). May 15, '21. Papineau Woods, &c.
 " *occidentalis* (black raspberry). June 6, 1821. McGillivray's.
Rosa Carolina. June 20, 1821. Below McGillivray's. (Probably R. blanda, J. B.)
 " *Carolina*. July 23, 1821. Bank of River St. Pierre.
 " *rubiginosa* (sweet-briar). June 20, '21. Below McGillivray's.
Crataegus eoccinea (scarlet-fruited thorn). May 30, 1821. Nichol's. *Crataegus*
 " *crus-galii* (cock-spur thorn). June 6, '21. McGillivray's.
 " *tomentosa* (black or pear thorn), var. *punctata*, Gray. *Crataegus*
Aronia melanocarpa. June 16, 1821. Papineau Woods. (Pyrus arbutifolia, Torrey, J. B.)
 " *ovalis* (shad-bush). May 31, 1821. Mountain. (Amelanchier Canadensis, var. oblongifolia, Torrey.)
 " *botryapium*. May 20, 1821. Mountain. (Amelanchier Canadensis.)
Sorbus Americana (mountain ash). June 16, 1821. Papineau Woods. (Pyrus Americana, DC.)
Lythraceæ.
Lythrum verticillatum. Aug. 8, 1821. Mouth of River St. Pierre. (Nescea verticillata, J. B.)
Onagraceæ.
Oenothera muricata. July 19, 1821. Below Quesnel's. (O. biennis, var. muricata.)
 " *biennis* (evening primrose). July 19, 1821. Below Quesnel's, et aliis. (Var. grandiflora, J. B.)
 " *pusilla*. June 18, 1821. (O. pumila, J. B.)
Epilobium angustifolium (willow herb). July 14, 1821. Savanne, et aliis.
 " *tetragonum*. July 29, 1821. Swamp, St. Denis Street. (E. coloratum, Torrey, J. B.)
 " *palustre*. August 11, 1821. Woods beyond Gregory's. (Probably E. coloratum, J. B.)

Epilobium lineare. August 11, 1821. Gregory's Meadows. (E. palustre, var. lineare, Gray, J. B.)

Isnardia palustris (water purslane). July 23, 1821. Bank of the River St. Pierre. (*Ludwigia palustris*, Ell., Gray, J. B.)

Circea Lutetiana (enchanter's night-shade). July 14, 1821. Savanne, &c.

" *Alpina*. July 12, 1821. Mountain, &c.

Myriophyllum spicatum (water milfoil). July 23, 1821. Gregory's Pond.

Grossulacæ.

Ribes —? June 4, 1854. Savanne. (Char. very close to *R. rotundifolium*, Michaux, Torrey, J. B.)

" *triflorum* (wild gooseberry). May 30, 1821. Papineau Woods. (Very likely *R. cynosbati* [see Torr. and also Gray] J. B.)

" *floridum* (wild black currant). May 22, 1821. Hallowell's Swamp, &c.

" *rubrum* (red currant). May 30, 1821.

" *prostratum* (fetid currant). L'Isle.

" *lacustre* (swamp gooseberry). June 4, 1821. Savanne.

Cucurbitacæ.

Sicyos angulatus (star cucumber). Sept. 18, 1821. Field between Suburbs.

Crassulacæ.

Penthorum sedoides (Ditch stone-crop). July 23, 1821. Edge of River St. Pierre.

Saxifragacæ.

Saxifraga nivalis (early saxifrage). May 20, 1821. Mountain. (*S. Virginensis*, J. B.)

Chrysosplenium Americanum (golden saxifrage). 1821. Mountain.

— *Mitella diphylla* (mitre wort). May 23, 1821. Mountain.

" *cordifolia*. June 4, 1821. Savanne, &c. (*M. nuda*, J. B.)

Tiarella cordifolia. May 23, 1821. Mountain.

Umbelliferæ.

Pastinaca sativa (parsnip). July 19, 1821. Common.

Heracleum lanatum (cow parsnip). June 30, 1821. Bank, mouth of the River St. Pierre.

Smyrniolum integririmum. June 22, 1821. Small mountain. (*Zizia integririma*, DC., J. B.)

" *aureum*. June 7, 1822. Nuns' Island. (*Thaspium aureum*, Nutt, Gray, J. B.)

Sanicula Marilandica (snake root). June 18, 1821. Mountain, &c.

Cicuta maculata (spotted cowbane). July 19, 1821. Fields below McGillivray's, &c.

" *bulbifera*. Aug. 11, 1821. Woods beyond Gregory's.

Sium lineare. July 23, 1821. Bank of River St. Pierre.

" *latifolium*. July 27, 1821. Near Gregory's.

Charophyllum Canadense. (*Cryptotaenia Canadensis*, DC. Torrey, J. B.)

Myrrhis longistylis (smooth sweet cicely). June 29, 1821. Lachine Woods. (*Osmorrhiza longistylis*, DC., J. B.)

Charophyllum Claytoni (hairy sweet cicely). June 11, 1822. Lachine Woods, Mountain. (*Osmorrhiza brevistylis*, DC., see Torrey, J. B.)

Araliaceæ.

- *Aralia racemosa* (spikenard). August 2.
- " *nudicaulis* (wild sarsaparilla). June 11, 1821. Mountain.
- " *hispida* (bristly sarsaparilla). July 5, 1822. Three Rivers.
- " *trifolia* (dwarf ginseng). May 15, 1821. Papineau Woods.
- *Panax quinquefolia* (ginseng). 1821. Mountain. (*Aralia quinquefolia*, J. B.)

Cornaceæ.

- Cornus Canadensis* (bunch-berry, pigeon-berry). 1821. Not uncommon.
- " *alternatifolia*. Aug. 31, 1825.
- " *sericea* (silky cornel or dogwood). June 30, 1825.
- " *circinata* (round-leaved dogwood). 1821.
- " *alba* (red-osier dogwood). 1821. (*C. stolonifera*, Michaux, J. B.)

Caprifoliaceæ.

- *Lonicera parviflora* (small honeysuckle). 1821. Mountain.
- *Xylosteon ciliatum* (fly honeysuckle). May 25, 1822. Savanne and Papineau Woods. (*Lonicera ciliata*, Muhl., Gray, J. B.)
- *Lonicera oblongifolia* (swamp honeysuckle), Muhl., J. B.
- *Linnaea borealis* (twin flower). July 14, 1821. Savanne, &c.
- *Dicervilla humilis* (bush honeysuckle). 1821. Mountain. (*Dicervilla trifida*, Mœnch, Gray, J. B.)
- *Triosteum perfoliatum*. Oct. 3, 1821. Papineau Woods.
- *Sambucus Canadensis* (elder), July 18, 1821. Roadside, cross-road near Côte St. Hilaire.
- " *pubescens* (red-berried elder). May 20, 1821. Mountain. (*S. pubens*, Gray, J. B.)
- " *ebulus*. July 7, 1821. Roadside, Côte St. Antoine. (Dwarf-elder mentioned in Hooker, Gray and Torrey, J. B.)
- *Viburnum oxycoccus* (tree-cranberry). June 8, 1821. Nichol's Gully. (*V. opulus*, L., Gray and Torrey, J. B.)
- " *lentago* (sheep-berry). June 6, 1821. Nichol's Gully.
- " *acerifolium*. July 16. *fruticosa*, L.
- " *lantanoïdes*. 1820.
- " *nudum*. July 2, 1822. Three Rivers; also wood above Cadieux. (*Approaches* var. *cassinoides*, Gray, J. B.)

Rubiaceæ.

- *Galium asprellum* (rough bedstraw). 1821. Common.
- " *Bermudianum*. June 22, 1821. Mountain. (More likely *G. Circæsans* [see Gray, Torrey and Hooker], J. B.)
- " *triflorum*. June 22, 1821. Mountain.
- " *strictum*. July 29. (Equivalent to *G. boreale*, L., [see Hooker, Torrey and Gray,] J. B.)
- " *aparine*. June 7, 1822. Nuns' Island.
- " *trifidum*. (L. J. B.)
- " *boreale*.
- *Mitchella repens* (partridge-berry). July 14, 1821. Savanne et aliis
- *Cephalanthus occidentalis* (button-bush). August 11, 1821. Gregory's Meadows.
- Houstonia* (*Oldenlandia*) *purpurea*, vel *ciliolata*. Blair, Belleville, and above Fort George.
- Houstonia cœrulea*, Gray.

trifida, J. B.

Compositae.

- Mountain.
 Three Rivers.
 Eau Woods.
 Aralia quin-
 1. Not un-
 825.
 onifera, Mi-
 ntain.
 Savanne and
 B.)
 ne, &c.
 in. (Dier-
 ds.
 side, cross-
 1. Mountain.
 St. Antoine.
 and Torrey,
 1. Nichol's
 J. B.)
 hol's Gully.
 wood above
 ray, J. B.)
 (More likely
 r], J. B.)
 eale, L, [see
 Savanne et
 1821. Gre-
 ata. Blair,
- Eupatorium verticillatum. 1820. Côte St. Paul. (Eupatorium
 purpureum, J. B.)
 " maculatum. August 24, 1821. Papineau Woods.
 (Eupatorium purpureum.)
 " ageratoides (white snake-root). August 20, 1821.
 Hollowell's.
 " perfoliatum (thorough-wort). August 9, 1821. Be-
 tween Recollet Street and St. Antoine Suburbs.
 Aster divergens. Aug. 28, 1821. Nichol's. (A. miser, var. J. B.)
 " lanceolatus? Aug. 22, 1821.
 " macrophyllus. Aug. 31, 1821. Mountain.
 " patens. August 31, 1821. Common.
 " cordifolius. August 28, 1821. Common.
 " rigidus. Sept. 10, 1821. (Diplopappus linarifolius.)
 " sagittifolius. Sept. 3, 1821. Côte St. Paul.
 " amygdalinus, Pursh. (A. umbellatus, Aiton.) Aug. 11,
 1821. Woods beyond Gregory's. (Diplopappus umbel-
 latus, Torrey and Gray.)
 Aster puniceus. August 20, 1821. Hollowell's.
 " acuminatus. August 17, 1821. Mountain.
 Erigeron heterophyllum (scabious). Aug. 28, 1821. Cross-road,
 Côte des Neiges. (Erigeron annuum.)
 " strigosum. July 14, 1821. Savanne.
 " Canadense (horse-weed). Aug. 2, 1821. Papineau Road.
 " purpureum (flea-bane). June 13, 1821. Mountain. (E.
 Philadelphicum.)
 Solidago livida. Sept. 8, 1821. Côte St. Paul. (S. caesia.)
 " latifolia. August 17, 1821. Mountain.
 " bicolor. August 31, 1821. Mountain.
 " macrophylla. August 3, 1824.
 " nemoralis. Aug. 31, 1821. Field above Cleghorn's.
 " altissima, var. vulgaris. Aug. 24, '21. Papineau Woods.
 " procera. August 20, 1821. Wood below Hollowell's.
 (S. Canadensis, var. procera, Torrey, J. B.)
 " Canadensis. Aug. 3, 1821. Nichol's Gully, &c. &c.
 " lanceolata. Sept. 8, 1821. Côte St. Paul.
 Ambrosia artemisiifolia (Roman rag-weed). Roadside.
 " trifida (great rag-weed). August 8, 1821. Common.
 Xanthium strumarium (cockle-bur). August 13, 1821. Bridge,
 River St. Pierre.
 Rudbeckia laciniata (cone-flower). August 28, 1821. Cross-road,
 Côte des Neiges; also River St. Pierre.
 Helianthus decapetalus (wild sunflower). Aug. 17, 1821. Mountain.
 " trachelifolius. August, 1821. Mountain.
 Bidens pilosa (tick-weed). July 17, 1821. Field above French
 burying-ground.
 " connata (swamp beggar-ticks), August 17, 1821. Field
 above French burying-ground.
 " Beckii (water-marigold). August 27, 1821. River, near
 Point St. Charles.
 " cernua (bur-marigold). Sept. 3, 1821. Côte St. Paul.
 Common.
 Helenium autumnale (sneeze-weed). Sept. 11, 1821. Boucherville
 Islands.

- *Achillea millefolium* (yarrow). 1821. Common.
 — *Anthemis cotula* (May-weed). 1821. Very common; roadside.
 (Maruta cotula.)
 — *Chrysanthemum Leucanthemum* (white-weed). June 13, 1821.
 (*Leucanthemum vulgare*.)
 — *Artemisia vulgaris* (mug-wort). Sept. 8, 1821. Common.
 — *Gnaphalium uliginosum* (cud-weed). August 20, 1821. Between
 suburbs.
 — " *luteo-album*? Sept. 8, 1821. Côte St. Paul.
 — " *margaritaceum* (pearly everlasting). August 2, 1821.
 Papineau Wood. (*Antennaria margaritacea*, J. B.)
 — " *plantaginifolium* (plantain-leaved everlasting). 1821.
 Common. (*Antennaria plantaginifolia*, J. B.)
 — *Senecio vulgaris* (groundsel). July 7, 1822. Roadside.
 — " *hieracifolius* (fire-weed). August 15, 1821. Roadside.
 (*Erechtithites hieracifolia*.)
 — *Cnicus altissimus* (tall thistle). Aug. 28, 1821. Road St. Catherine.
 (*Cirsium altissimum*, J. B.)
 — " *muticus* (swamp thistle). (*Cirsium muticum*.)
 — " *discolor*. August 17, 1821. Field above French burying-
 ground. (*Cirsium discolor*.)
 — " *horridulus* (yellow thistle). 1821. Very common. (*Cir-
 sium horridulum*.)
 — *Aretium lappa* (burdock). August 7, 1821. Common. (*Lappa
 major*, Gray, J. B.)
 — *Cichorium intybus* (chicory). July 19, 1821. Rather common.
 — *Leontodon taraxacum*. 1821. Very common. (*Taraxacum
 dens-leonis*.)
 — *Hieraceum Kalmii* (Canada hawk-weed). Aug. 17, 1821. Mountain.
 (H. Canadense, Torrey, J. B.)
 — *Hieracium paniculatum* (panicle hawk-weed). August 2, 1821.
 Papineau Wood.
 — " *Marianum* (rough hawk-weed). Aug. 24, 1821. Gully,
 Papineau Road. (H. seabrum, Torrey, J. B.)
 — *Prenanthes cordata* (tall white-lettuce). Aug. 24, 1821. Papineau
 Wood. (*Nabalus altissimus*, Torrey, J. B.)
 — " *virgata*? Aug. 17, 1821. Mountain.
 — " *alba* (white-lettuce). Sept. 8, 1821. Côte St. Paul.
 ("Nabalus albus.")
 — " *racemosa*. August 11, 1821. Hallowell's. (*Nabalus
 racemosus*.)
 — *Sonchus arvensis* (corn sow-thistle). August 19, 1821. Between
 suburbs.
 — " *palustris*. Aug. 17, 1821. Between suburbs.
 — " *leucophæus*. July 14, 1821. Savanne, et aliis. (*Mul-
 gedium leucophæum*, Gray, J. B.)
 — " *oleraceus* (sow-thistle). July 19, 1821. Below Quesnel's.
 — *Lactuca elongata* (wild lettuce). Aug. 24, 1821. Papineau Wood.

Lobeliaceæ.

- *Lobelia cardinalis* (cardinal flower). Sept. 3, 1821. Gulley, Côte
 St. Paul.
 — " *inflata* (Indian tobacco). Aug. 2, '21. Papineau Wood, &c.
 — " *Kalmii*. Sept. 11, '21. Côte St. Paul, Boucherville Islands.

Campanulaceæ.

- Campanula rotundifolia* (harebell). July 20, 1822. Falls of Grande Mou, River St. Maurice.
 " *aparinoides* (marsh bellflower), Pursh. Aug. 17, 1821. Meadow between suburbs.

Ericaceæ.

- Vaccinium corymbosum* (swamp blueberry), Torrey, J. B.
 " *Pennsylvanicum* (Torrey), (or *V. corymbosum*, var. *pallidum*, of Gray, J. B.)
 " *oxycoccus* (small cranberry). *Oxycoccus palustris*. 1820. Savanne St. Michel.
Gaultheria hispidula (creeping snowberry). August 21, 1821. (*Chiogenes hispidula*, Torrey and Gray, J. B.)
 " *procumbens* (winter-green, tea-berry, checker-berry). Aug. 2, 1821. Papineau Woods.
Epigaea repens (trailing arbutus, May flower). 1821. Three Rivers.
Andromeda polifolia. May 26, 1825.
 " *calyculata*, Torrey. (*Cassandra calyculata*, Gray, J. B.)
Kalmia glauca (pale laurel). July 14, 1821. Savanne.
 " *angustifolia* (sheep laurel). July 14, 1821. Savanne.
Ledum palustre (Labrador tea). June 4, 1821. Savanne.
Rhodora Canadensis. June 4, 1821, Savanne, and June 14, 1821, wood above Cadieux.
Pyrola rotundifolia. July 8, 1821. Mountain.
 " *uniflora*. July 8, 1821. Mountain swamp, et aliis. (*Moneses uniflora*, J. B.)
 " *umbellata*. Aug. 2, 1821. Mountain and Papineau Woods. (*chimaphila umbellata*, J. B.)
 " *secunda*. July 8, 1821. Mountain swamp.
 " *asarifolia*. July 10, 1822. Portage des Grès, Black River. (var. *P. rotundifolia*.)
 " *minor*. July 8, 1821. Mountain swamp.
 " *elliptica* (with two bracts). July 2, 1825.
Monotropa uniflora (Indian-pipe, death-flower). August 7, 1821. Mountain.
Ilex Canadensis (mountain holly). June 4, 1821. Savanne. (*Neuopanthus Canadensis*, DC., Gray, J. B.)
Prinos verticillatus (black alder). July 3, 1822, Wood above Cadieux. Oct. 3, 1821, Papineau Woods. (*Ilex verticillata*, Gray, J. B.)
- Plantaginaceæ.*
Plantago major (plantain). 1821. Gregory's Wood. Common.
- Primulaceæ.*
Lysimachia capitata (tufted loose-strife). July 4, 1822. Island above Nuns' Island. (*Naumburgia thyrsoiflora*, Gray, J. B.)
Lysimachia ciliata. Aug. 2, 1821. Papineau Woods, &c.
 " *racemosa*. June 23, 1821. Gregory's Meadows. (*L. stricta*, Ait., J. B.)
Trientalis Americana (starflower). June 11, 1821. Mountain, &c.
- Lentibulaceæ.*
Utricularia vulgaris (bladder-wort). July 23, 1821. River St. Pierre.
- Orobanchaceæ.*
Orobanchë Virginiana (beech-drops). Oct. 3, '21. Papineau Woods. (*Epiphegus Americanum*, Torrey, and *E. Virginiana*, Gray, J. B.)

Scrophulariaceæ.

Asclepias tuberosa (fig-wort). June 11, 1821. Mountain.
(*S. nodosa*, J. B.)

Verbascum thapsus (mullein) 1821. Common in fields.

Mimulus ringens (monkey flower). July 12, 1821. Pond at the Cross, et aliis.

Lindernia pyxidaria (false pimpernel). Sept. 8, 1821. Rocks, Point St. Charles. (*L. attenuata*, Torrey, *Ilysanthes gratioloides*, Gray, J. B.)

Veronica anagallis (water speedwell). June 27, 1821. Lachine Woods.

" *scutellata* (marsh speedwell). June 29, 1821. Lachine Woods.

" *peregrina* (purslane speedwell). June 4, 1822. Rather common, Mountain side.

" *serpyllifolia* (thyme-leaved speedwell). May 29, 1821. (same with white flowers, Berthier.)

Gerardia purpurea. Aug. 17, 1821. Between the Recollet and St Antoine Suburbs.

Pedicularis Canadensis. May 31, 1821. Mountain.

Melampyrum arvense. July 12, 1822. Three Rivers. (*M. Americanum*.)

Acanthaceæ.

Justicia pedunculosa (water willow). June 30, 1821. Mouth of the St. Pierre. (*Dianthera Americana*, J. B.)

Verbenaceæ.

Verbena angustifolia. July 3, 1822. Island above Nuns'.

" *hastata* (blue vervain). July 18, 1821. Below Quesnel's.

" *urticifolia*. August 1, 1821. Roadside, Côte St. Antoine, et aliis.

Phryma leptostachia (lop-seed). July 14, 1821. Savanne, et aliis.

Labiataæ.

✕ *Teucrium Canadense* (wood-sage). Sept. 11, 1821. Boucherville Island.

✕ *Lycopus Europæus*. July 29, 1821. Meadows.

" *Virginicus* (bugle-weed). Aug. 2 1821. Papineau Wood.

✕ *Mentha tenuis*. Sept. 1, 1821. Roadside, Côte St. Charles. (*M. viridis*.)

✕ *Mentha borealis* (wild-mint). July 27, 1821. Mouth of River St. Pierre, et aliis. (*M. Canadensis*, Torrey, J. B.)

✕ *Pycnanthemum lanceolatum* (mountain-mint). October 10, 1821. Nuns' Island.

✕ *Hyssopus nepetoides*. Aug. 17, 1821. Mountain. (*Lophanthus nepetoides*, J. B.)

✕ *Nepeta cataria* (catnip). Aug. 7, 1821. Mountain, near McTavish's.

✕ *Dracopcephalum Virginianum* (false dragon-head). Sept. 8, 1821. Small island opposite Point St. Charles. (*Physostegia Virginiana*, Gray, J. B.)

✕ *Prunella vulgaris* (heal-all). July 19, 1821. Below Quesnel's.

✕ *Scutellaria lateriflora* (skull-cap). August 11, 1821. Wood beyond Gregory's.

✕ " *galericulata*. Aug. 2, 1821. Papineau Woods, et aliis.

✕ " *parvula*. June 22, '21. Mountain, below Priests' farm.

Galeopsis tetrahit (hemp-nettle). August 1, 1821. Common.

- ✓ *Stachys aspera*. Sept. 11, 1821. Boucherville Islands. (*S. palustris*, var. *aspera*, Gray, J. B.)
- ✗ *Leonurus cardiaca* (mother-wort). September 2, 1821. Roadside, Sherbrooke Street.
- Borraginaceæ.**
Lycopsis arvensis (small bugloss). June 20, 1821. Open lot, St. James Street.
Lithospermum officinale (gromwell). 1821. Common.
 — *Cynoglossum officinale* (hound's-tongue). 1821. Common.
Myosotis lappula (stick-seed). 1821. Common. (*Echinospermum lappula*, J. B.)
Cynoglossum amplificaule (wild comfrey). June 11, 1821. Mountain. (*C. Virginicum*, Gray, J. B.)
- Hydrophyllaceæ.**
Hydrophyllum Virginicum (water-leaf). June 16, 1821. Papineau Woods, &c.
- Convolvulaceæ.**
Convolvulus sepium (hedge bindweed). July 27, 1821. Near the mouth of River St. Pierre. (*Calystegia sepium*, R. Br. Gray, J. B.)
Convolvulus stans (low bindweed). July 2, 1822. Three Rivers. (*Calystegia spithamea* of Pursh [see Gray and Torrey], J. B.)
Cuscuta Americana (dodder). Sept. 11, 1821. Boucherville Island. (*C. Gronovii*, Willd., Gray, J. B.)
- Solanaceæ.**
Solanum nigrum (nightshade). Aug. 8, 1821. Garden, Point St. Charles, &c.
Nicandra physaloides. Sept. 7, 1821. Garden, but wild.
Datura stramonium (thorn-apple). Sept. 3, 1821. Grey Nuns' court.
Hyoscyamus niger (black henbane). 1821. Common, roadside.
- Gentianaceæ.**
Gentiana saponaria (soapwort gentian). Sept. 3, 1821. Meadows, Côte St. Paul, Sept. 11.
Menyanthes trifoliata (buck-bean). May 28, '21. Pool near the Cross.
- Apocynaceæ.**
Apocynum hypericifolium (Indian hemp). July 27, 1821. Bridge, River St. Pierre. (*A. cannabinum*, var. *hypericifolium*, Gray.)
 — *Apocynum androsaemifolium* (dogbane). June 21, 1821. Mountain.
- Asclepiadaceæ.**
Asclepias syriaca (milkweed, silkweed). July 27, 1821. Common. (*A. cornuti*, Gray, J. B.)
 " *incarnata*. July 22, '21. Meadows, Recollet Suburb, &c.
- Oleaceæ.**
Fraxinus cypripetala (white ash). June 25, 1821. Mountain. (*F. Americana*.)
 " *sambucifolia* (black ash). June 5, Nichol's, and May 17.
- Aristolochiaceæ.**
Asarum Canadense (wild ginger). May 15, 1821. Mountain, Papineau Woods, &c.
- Chenopodiaceæ.**
Chenopodium album (lamb's quarter). 1822. Common.
 " *hybridum* (goose-foot). Aug. 28, 1821. St. Catharine Wood.

Blitum capitatum (strawberry-blite). 1820.

Atriplex patula (orache). Aug. 22, 1821. Roadside. (*A. hastata* Gray, J. B.)

Amarantaceæ.

Amaranthus hypochondriacus (prince's feather). Sept. 17, 1821. Roadside, Bleury Street.

" *viridis*. Aug. 13, 1821. Vacant lot, St. James Street.

retroflexus (pig-weed). Sept. 3, 1821. Common.

Polygonaceæ.

Polygonum Persicaria. July 19, 1821. Common.

" *lapathifolium*. July 21, 1821. Between Suburbs. (*P. nodosum*, Pers., Gray, J. B.)

" *coccineum* (*amphibium*, L.), var. *terrestre*. Sept. 11, 1821. Boucherville Island.

" *Pennsylvanicum*. July 23, 1821. Mouth of River St. Pierre, et aliis.

" *mite*. Sept. 3, 1822. Meadows, Côte St. Paul.

" *Virginianum*. Sept. 11, 1821. Boucherville Island.

" *aviculare*. August 11, 1821. (Common with var. *P. tenue*, J. B.)

" *sagittatum*. Aug. 17, 1821. Between Suburbs.

" *hydropiperoides*. Aug. 31, 1821. Very common.

" *coccineum*. July 29, 1821. Swamp, St. Denis Street. (*P. amphibium*, var. *aquaticum*, J. B.)

" *scandens*. August 20, 1821. Near Hallowell's. (*P. dumetorum*, Gray, J. B.)

" *convolvulus*. July 19, 1821. Below Quesnel's.

Rumex Britannicus (swamp dock). August 11, 1821. Gregory's meadows. (See Torrey, also Gray, *R. verticillatus*.)

" *verticillatus*. June 29, 1821. Lachine Road.

" *crispus* (curled dock). 1821. Common.

" *obtusifolius* (bitter dock). July 13, 1821. Ditch near Beaver Hall.

" *acetosella* (field sorrel). June 16, 1821. Papineau Road, common.

Thymeleaceæ.

Direa palustris (leather-wood).

Euphorbiaceæ.

Euphorbia Helioseopia (sun-spurge).

Acalypha Caroliniana. Aug. 7, 1821. Common.

Urticaceæ.

Ulmus Americana (elm). April 30, 1824. Nichol's Gully, &c.

" *fulva* (slippery or red elm). April 30, 1824.

Celtis occidentalis (hackberry).

Urtica divaricata (wood-nettle). Aug. 7, 1821. Mountain. (*U. Canadensis*, Torrey, *Laportea Canadensis*, Gray.)

" *pumila* (buck-weed). Aug. 17, 1821. Mountain. (*Adike pumila*, Torrey, *Pilea pumila*, Gray.)

" *proceræ* (tall-nettle). Aug. 20, 1821. Wood near Hallowell's, &c. (*U. gracilis*, Gray.)

Pilea glabra. May 19, 1821. St. Martin. (*P. Americana*, Torrey, var. *pubescens*, Gray, J. B.)

Cannabis sativa (hemp). July 29, 1821. Common, roadside.

Platanaceæ.

Platanus occidentalis (plane-tree). May 29, 1825.

Juglandaceæ.

- Juglans alba* (shell-bark hickory). (*Carya alba*).
 " *tomentosa* (mockernut hickory). (*Carya tomentosa*).
 " *sulcata* (thick shell-bark hickory). (*Carya sulcata*).
 " *amara* (bitter-nut hickory). (*Carya amara*).
 " *cinerea* (butternut). Mountain.

Cupuliferæ.

- Quercus olivæformis* (bur-oak). (*Q. macrocarpa*, var. *olivæformis*, Gray).
 " *rubra* (red oak).
 " *coccinea* (scarlet oak).
Corylus avellana (hazel-nut). June 22, 1821. Small mountain.
 (*C. rostrata*, J. B).
Carpinus Americana (hornbeam).
Ostrya Virginica (hop hornbeam).
Fagus ferruginea (beech).

Myricaceæ.

Myrica gale (sweet gale). Sept., 1821. Island opposite Point St. Charles.

Betulaceæ.

- Betula nana* (dwarf-birch). June 9, 1825.
 " *papyracea* (canoe-birch). May 11, 1825, and Sept. 11.
 " *populifolia* (poplar-leaved birch). Sept. 26. (*B. alba*, var. *populifolia*).
Alnus serrulata (smooth alder). July 29.
 " *undulata* (green alder). June 11, 1821. (*A. viridis*).

Salicaceæ.

- Populus angulata* (angled cotton-wood). Sept., 1821.
 " *tremuloides* (aspen). May 10, 1821.
 " *grandidentata*. September 30.

Coniferæ.

- Pinus balsamea* (balsam fir). May 25, 1821. Savanne. (*Abies balsamea*, Gray).
 " *strobus* (white pine). May 25, 1821. Savanne.
 " *pendula* (larch, tamarack). (*Larix Americana*).
Taxus Canadensis (ground-hemlock). May 20, 1824.

Araceæ.

- Arum triphyllum* (Indian turnip). June 16, 1821. Papineau Wood.
Symplocarpus foetidus (skunk cabbage). Salish.

Typhaceæ.

- Sparganium simplex* (bur-reed). (July 23, 1821. Meadows near Gregory's).
 " *ramosum*. June 29, 1821. Lachine Wood, et aliis.
Typha latifolia (cat-tail). July 24, 1821. Savanne.
 " *vulgaris*. Sept. 11, 1821. Boucherville Islands.

Lemnaceæ.

Lemna polyrrhiza (duck-weed). Sept. 8, 1821. Common.

Naiadaceæ.

- Potamogeton compressus* (pond-weed). July 29, 1824.
 " *fluitans*. August 14, 1821.
 " *lucens*. Sept. 8, '21. River, near Point St. Charles.

- Potamogeton natans. July 23, 1821. River St. Pierre.
 " perfoliatus. July 27, 1821. River St. Pierre and
 Three Rivers.

Alismaceæ.

- Alisma plantago (water-plantain). July 23, 1821. Near Gregory's.
 (Var. Americanum, J. B.)
 Sagittaria sagittifolia (arrow-head). July 29, 1821. (Var.
 variabilis, Gray.)
 " latifolia. Aug. 4. At Nichol's. (Var. variabilis.)
 " gracilis. July 27. River St. Pierre.

Hydrocharidaceæ.

- Vallisneria spiralis (tape-grass). Sept. 8, 1821. River, near Point
 St. Charles.

Orchidaceæ.

- Orehis spectabilis. 1821.
 " dilatata. June 11, 1821. Mountain swamp. (Platanthera
 dilatata.)
 " fimbriata. July 23, 1821. Gregory's Meadows, et aliis.
 (Platanthera psychodes, var. grandiflora, Torrey.)
 " orbiculata. June 11, 1821. Mountain-swamp and Portage
 des Grès. (Platanthera orbiculata.)
 Habenaria macrophylla. July 10, 1822. Portage des Grès.
 (Platanthera orbiculata.)
 Satyrium bracteatum. July 5, 1822. Swamp and Rivers. (Pla-
 tanthera bracteata.)
 Neottia cernua (ladies' tresses). Sept. 3, 1821. Côte St. Paul.
 (Spiranthes cernua, Torrey, J. B.)
 Arethusa bulbosa. July 5, 1822. Swamp, Three Rivers.
 " ophioglossoides. July 5, 1821. Swamp, Three Rivers.
 (Pogonia ophioglossoides.)
 Calypso borealis. May 25, 1822.
 Cymbidium pulchellum (grass-pink). July 14, 1821. Savanne.
 (Calopogon pulchellus.)
 Atalaxis liliifolia. July 14, 1821. Savanne. (Liparis liliifolia.)
 Cymbidium odontorhizum. July, 1822. Papineau Wood. (Co-
 rallorhiza odontorhiza.)
 " corallorhizum. June 4, 1821. Savanne. (Corallor-
 hiza innata.)
 Cyprripedium arietinum. June 4, 1821. Savanne.
 " humile (low ladies'-slipper). June 2, 1822. (C
 acule.)
 " spectabile (gay ladies'-slipper). June 25, 1821.
 Mountain-swamp.
 " pubescens (yellow ladies'-slipper). June 4, 1821.
 Savanne.
 " parviflorum (small yellow ladies'-slipper). June 4,
 1821. Savanne.

Iridaceæ.

- Sisyrinchium anceps (blue-eyed grass). June 11, 1821. Common
 in fields. (S. Bermudiana, J. B.)

Smilacæ.

- Smilax peduncularis. June 25, 1821. Mountain.
 Trillium grandiflorum (wake-robin). May 14, 1821. Gully at
 Tanneries, Mountain, &c.

Trillium pictum. May 26, 1821. Papineau Wood. (T. erythrocarpum, Michaux, Gray, J. B.)

" *cernuum*.

" *erectum*. May 15, 1821. Papineau Road.

Medeola Virginica (Indian cucumber). June 11, 1821. Swamp, Mountain.

Liliaceæ.

Convallaria angustifolia (Solomon's seal). May 26, 1821. Papineau Road. (*Polygonatum biflorum*, Ell., Gray, J. B.)

" *bifolia*. June 11, 1821. Mountain. (*Smilacina*

bifolia, Ker, var. *Canadensis*, Gray, J. B.)

" *polygonatum*. May 30, 1821. Mountain. (*Streptopus roseus*, Michaux, Gray, J. B.)

" *racemosa*. June 17, 1821. Mountain. (*Smilacina racemosa*, Desf., Gray, J. B.)

" *stellata*. June 4, 1821. Savanne. (*Smilacina stellata*, Desf., Gray, J. B.)

" *borealis*. June 4, 1821. Savanne, et aliis. (*Clin-tonia borealis*, Raf., Gray, J. B.)

Allium Canadense (wild garlic), Kalm. July 3, 1821. Island above Nuns' Island.

Lilium Philadelphicum (wild orange-lily.) (L.) J. B.

" *Canadense* (Canadian lily). 1820. Laprairie.

Erythronium dens-canis (dog's-tooth violet). May 5, 1821. Mountain. (E. *Americanum*, Smith, J. B.)

Melanthaceæ.

Uvularia grandiflora (large bell-wort). May 15, '21. Papineau Road.

" *sessilifolia*. May 15, 1821. Papineau Road.

Veratrum viride (white hellebore). July 5, 1821. Three River's swamp.

Tofieldia glutinosa. Cleghorn's, Quebec. June 28, 1827.

Pontederiaceæ.

Pontederia cordata (pickerel-weed). July 27, 1821. Mouth of River Saint Pierre.

Gramineæ.

Zizania clavulosa (Indian rice). July 27, 1821. River St. Pierre. (*Z. aquatica*.)

Equisetaceæ.

Equisetum arvense (mare's-tail).

" *palustre*.

" *limosum*.

Filices.

Polypodium vulgare. August 7, 1821. Mountain.

Struthiopteris Pennsylvanica. July 3, 1822. Papineau Woods.

(S. *Germaica*, J. B.) (*Ostrich-fern*).

Pteris gracilis. June 15, 1822. Mountain. (*Allosorus gracilis*, J. B.)

" *aquilina* (brake). August 2, 1821. Common.

Adiantum pedatum (maiden-hair fern). June 25, 1821. Mountain.

Asplenium rhizophyllum. April 30, 1822. Cleghorn's garden; originally from St. Helen's. (*Camptosorus rhizophyllum*, J. B.)

thelypteroides. July 17, 1821. Mountain.

- Asplenium angustifolium*. June 25, 1821. Mountain. (*Asplenium Filix-fœmina*, J. B.)
- Athyrium bulbiferum*. June 25, 1821. Mountain. (*Cystopteris bulbifera*.)
- " *Thelypteris*. Aug. 11, 1821. Gregory's Meadows. (*Aspidium Thelypteris*, J. B.)
- " ———. July 16. (*Cystopteris fragilis*, Bernh.)
- Aspidium dilatatum*. Oct. 3, 1820. Papineau Wood. (*A. spinulosum*, var. *dilatatum*, Gray, J. B.)
- " *cristatum*. June 16, 1821. Papineau Woods.
- " *Goldianum*. June 15, 1822. Mountain. From Mr. Goldie.
- " *marginale*. June 16, 1821. Papineau Woods.
- " *acrostichoides*. Sept. 18, 1821. Mountain.
- " ———. June 16, 1821. Papineau Woods.
- Onoclea sensibilis*. Aug. 2, 1821. Papineau Woods.
- Woodsia hyperborea*. August 7, 1821. Mountain.
- Osmunda regalis* (flowering-fern). August 11, 1821. Wood beyond Gregory's.
- " *interrupta*. June 16, 1821. Papineau Woods. (*O. Claytoniana*.)
- " *cinnamomea*. June 11, 1821. Mountain-swamp.
- Botrychium gracile*. June 25, 1821. Mountain (*B. Virginicum*.)
- Lycopodiaceæ*.
- Lycopodium dendroideum*. June 16, 1821. Papineau Wood.
- " *clavatum* (club-moss). July. Papineau Wood.
- " *lucidulum*. Oct. 3, 1821. Papineau Wood.
- " *complanatum*. Woods north of Papineau Road. July 3.

(Asplenium
(Cystopteris
adows. (As-
Bernh.)
d. (A. spin-
ds.
n Mr. Goldie.
ds.
ds.
Wood beyond
Woods. (O.
ramp.
arginicum.)
Wood.
Wood.
od.
ineau Road.

