

DOT/FAA/AM-05/8  
Office of Aerospace Medicine  
Washington, DC 20591

# Enantiomeric Analysis of Ephedrines and Norephedrines

S.M. Wang<sup>a,b</sup>

R.J. Lewis<sup>b</sup>

D. Canfield<sup>b</sup>

T.L. Lia<sup>bc</sup>

R.H. Liu<sup>bc</sup>

<sup>a</sup> Central Police University  
Taoyuan, Taiwan

<sup>b</sup> Civil Aerospace Medical Institute  
Federal Aviation Administration  
Oklahoma City, OK 73125

<sup>c</sup> Department of Justice Sciences  
University of Alabama at Birmingham  
Birmingham, AL 35294

April 2005

Final Report

This document is available to the public through:

- The Defense Technical Information Center  
Ft. Belvoir, VA 22060
- The National Technical Information Service  
Springfield, VA 22161



U.S. Department  
of Transportation

**Federal Aviation  
Administration**

## **NOTICE**

This document is disseminated under the sponsorship of the U.S. Department of Transportation in the interest of information exchange. The United States Government assumes no liability for the contents thereof.

### Technical Report Documentation Page

1. Report No. DOT/FAA/AM-05/8		2. Government Accession No.		3. Recipient's Catalog No.	
4. Title and Subtitle  Enantiomeric Analysis of Ephedrines and Norephedrines				5. Report Date April 2005	
				6. Performing Organization Code	
7. Author(s)  Wang SM <sup>a,b</sup> , Lewis RJ <sup>b</sup> , Canfield D <sup>b</sup> , Lia TL <sup>a</sup> , Liu RH <sup>b,c</sup>				8. Performing Organization Report No.	
9. Performing Organization Name and Address  <sup>a</sup> Central Police University, Taoyuan, Taiwan <sup>b</sup> FAA CAMI, P.O. Box 25082, Oklahoma City, OK 73125 <sup>c</sup> Department of Justice Sciences, University of Alabama at Birmingham, Birmingham, AL 35294				10. Work Unit No. (TRAIS)	
				11. Contract or Grant No.	
12. Sponsoring Agency name and Address  Office of Aerospace Medicine Federal Aviation Administration 800 Independence Avenue, S.W. Washington, DC 20591				13. Type of Report and Period Covered	
				14. Sponsoring Agency Code	
15. Supplemental Notes  This work was accomplished under the approved task AM-B-04-TOX-204.					
16. Abstract  Concerned with variations in abuse potential and control status among various isomers of ephedrines and norephedrines, this study was conducted to develop an effective method for the simultaneous analysis of eight ephedrine-related compounds along with structurally similar cathinones. Among various approaches studied, a 60m HP-5MS (0.25 mm ID, 0.25 µm film thickness) was successfully used to characterize the following compounds that were derivatized with (–)-α-methoxy-α-trifluoromethylphenylacetic acid (MTPA): (+)-cathinone, (–)-cathinone, (+)-norephedrine, (–)-norephedrine, (+)-norpseudoephedrine, (+)-ephedrine, (–)-ephedrine, (–)-pseudoephedrine, (+)-pseudoephedrine. (–)-Cathine standard was not available but should also be resolvable under this analytical procedure. This method was successfully applied to the analysis of selected cold remedies for characterizing the enantiomeric compositions of the compounds present in these samples.					
17. Key Words Enantiomer, Ephedrine, Norephedrine, Chiral Derivatization				18. Distribution Statement Document is available to the public through the Defense Technical Information Center, Ft. Belvoir, VA 22060; and the National Technical Information Service, Springfield, VA 22161	
19. Security Classif. (of this report) Unclassified		20. Security Classif. (of this page) Unclassified		21. No. of Pages 14	
				22. Price	



## **ACKNOWLEDGMENTS**

The authors are thankful to the financial support provided by the (Taiwanese) National Bureau of Controlled Drugs, Department of Health (DOH92-NNB-1005), and the provision of a research environment by the U.S. Federal Aviation Administration's Civil Aerospace Medical Institute (Oklahoma City, OK), which greatly facilitated the preparation of this manuscript.



# ENANTIOMERIC ANALYSIS OF EPHEDRINES AND NOREPHEDRINES

## INTRODUCTION

“Chirality” is currently a topic at the forefront of academic research, as evidenced by the award of the 2001 Noble Prize in Chemistry to “three scientists who devised techniques for catalytic asymmetric synthesis — the use of chiral catalysts to accelerate the production of single-enantiomer compounds for pharmaceutical use and a wide range of other applications.”(1) In the pharmaceutical industry, drug firms are actively involved in developing new drugs as single enantiomers and in carrying out “racemic switches” — redeveloping racemic mixture drugs as single enantiomers — resulting in a significant increase in the percentage of drugs marketed as single enantiomers.(2)

Enantiomeric analysis of abused drugs is also an important issue in forensic laboratories. Data resulting from enantiomeric analysis can (a) provide information for sentencing guidance for certain drug-related offenses; (b) assist in drug-related investigations; and (c) determine whether the drug of concern is derived from a controlled substance. For example, ephedrine and pseudoephedrine ( $\Psi$ -ephedrine) are common over-the-counter (OTC) pharmaceuticals. They are also frequently used as adulterants in packaging drugs of abuse.(3) (–)-Ephedrine has been a popular precursor for illicit manufacturing of (+)-methamphetamine.(4,5) Investigation of clandestine laboratory activities reported (6,7) the use of ephedra plant (*Ma Huang*) material for methamphetamine manufacturing; (–)-ephedrine and (+)- $\Psi$ -ephedrine in this plant are extracted for conversion to methamphetamine in these illicit manufacturing processes. Thus, the identification of ephedrine and  $\Psi$ -ephedrine, and their enantiomeric composition in methamphetamine samples, may help identify the drug’s precursor material and provide valuable information to the investigation process. Also of significant analytical concern is the reported false methamphetamine identification in urine specimens due to excessive consumption of ephedrine and  $\Psi$ -ephedrine.(8)

Enantiomeric analysis of abused drugs in the authors’ laboratories date back to 1981, mainly involving gas chromatographic and nuclear magnetic resonance spectrometric approaches.(9–13) More recent studies utilized liquid chromatography and capillary electrophoresis.(14,15) Concerned with the presence of ephedrine-related compounds in OTC cold remedies and its implications in sport drug testing (16), this study was

conducted to develop a method that can be effectively used to determine the enantiomeric compositions of the following structurally related compounds: ephedrines,  $\Psi$ -ephedrine, norephedrines (phenylpropanolamine, or PPA), norpseudoephedrine (nor- $\Psi$ -ephedrine, or cathine), and cathinones. Methods thereby developed were then applied to selected OTC cold remedies to detect the presence and enantiomeric compositions of these compounds.

## EXPERIMENTAL

### Standards and reagents

R(+)-Cathinone, S(–)-cathinone, S,R(+)-ephedrine, R,S(–)-ephedrine, S,S(+)- $\Psi$ -ephedrine, R,R(–)- $\Psi$ -ephedrine, S,R/R,S(±)-norephedrine, Internal standard (S,R(+)-ephedrine- $d_3$ , 1 mg/mL in methanol) were purchased from Cerilliant Int. Co. (Austin, TX); S,S(+)-nor- $\Psi$ -ephedrine (1 mg/mL) was purchased from Sigma Co. (St. Louis, MO). The structures of these compounds are shown in Figure 1.

Chiral derivatization reagents and their sources are as follows: (–)- $\alpha$ -methoxy- $\alpha$ -trifluoromethylphenylacetic (MTPA), (S)-(–)-*N*-(trifluoroacetyl)-prolyl chloride (*L*-TPC) (Aldrich: St. Louis, MO); 2,3,4,6-tetra-*O*-acetyl- $\beta$ -D-glucopyranosyl isothiocyanate, R-(+)- $\alpha$ -phenylethyl isocyanate, 2,3,4-triacetyl- $\alpha$ -D-arabinopyranosyl isothiocyanate (Fluka Chemie GmbH: Industriestrasse, Buchs, Switzerland). Achiral derivatization reagents and their sources are: 9-fluorenylmethyl chloromate, *N*-(phenylseleno)-phthalimide, *N,O*-bis(trimethylsilyl)-acetamide (BSA), pentafluoropropionic anhydride (PFPA), heptafluorobutyric anhydride (HFBA) (Aldrich: St. Louis, MO); 4-carboethoxyhexafluorobutyl chloride (4-CB) (Lancaster: Windham, NH).

Nineteen readily available OTC cold remedies (13 syrup, 6 capsule) were purchased from local drug stores in the greater Taipei area.

### Sample preparation

Typical extraction, derivatization, and GC-MS analysis studies utilized 2 mL of standard mixtures or specimens. Standard mixtures were prepared to contain 1000 ng of each analyte following the general procedure described below. Standards obtained from the suppliers (typically 1 mg/mL in methanol) were first diluted to 10  $\mu$ g/mL (in ethanol). 100  $\mu$ L of each standard was then taken and mixed into 2 mL of drug-free syrup.

The preparation of OTC samples was as follows. Those in syrup forms were diluted (typically diluting 100  $\mu\text{L}$  to 2 mL), while those in capsule forms were emptied and dissolved into 10 mL of blank syrup with further dilution (typically diluting 20  $\mu\text{L}$  to 2 mL).

To determine extraction efficiency, the following procedure was used to derive the amount of the analytes resulting from the process without the extraction step. A mixture containing all analytes of interest was prepared by mixing 100  $\mu\text{L}$  each of the diluted standards (10  $\mu\text{g/mL}$ ) in a clean tube. The mixture was dried under nitrogen and then processed in parallel with other standard mixtures that had completed the extraction step.

### Derivatization procedure

Standard mixtures and OTC specimens in aqueous solutions were extracted and derivatized following either a one-step or two-step procedure as described below. Using *l*-TPC as example, the one-step procedure involved mixing 2 mL sample, 100  $\mu\text{L}$  internal standard ((+)-ephedrine- $\text{d}_3$ , 10  $\mu\text{g/mL}$ ), 0.5-mL saturated  $\text{K}_2\text{CO}_3$  solution, 50  $\mu\text{L}$  *l*-TPC, and 6 mL ethyl acetate for 10 min. The mixture was then centrifuged (5 min), followed by removing the upper layer to a clean tube that was dried under a nitrogen stream. The residue was typically reconstituted with 200- $\mu\text{L}$  ethyl acetate of which 1  $\mu\text{L}$  was used for each GC-MS analysis.

Using MTPA derivatization as an example, the two-step process was carried out as follows. Typically, the internal standard, 2 mL standard mixture (or specimen), and 0.5 mL saturated  $\text{K}_2\text{CO}_3$  solution were mixed for 30 sec. The mixture was then extracted with 6-mL ethyl acetate by shaking (10 min), followed by centrifugation (5 min). The upper layer was transferred into a clean tube and dried under nitrogen. For the derivatization step, the residue was added 50  $\mu\text{L}$  *N,N*-dicyclohexycarbodiimide and 100  $\mu\text{L}$  MTPA. The reaction mixture was thoroughly mixed, then incubated at 70°C for 20 min. This same two-step procedure was used when HFBA was used for derivatization, except that 1 mL of 2 N NaOH, instead of 0.5 mL saturated  $\text{K}_2\text{CO}_3$  solution, was used prior to the addition of ethyl acetate for extraction.

### GC-MS analysis

GC-MS analysis was performed on a HP 5890 Series II GC interfaced to an HP 5971 MS (Agilent: Palo Alto, CA). Two columns used in this study were: 25 m HP 5MS (0.20 mm ID, 0.33  $\mu\text{m}$  film thickness) and 60 m HP 5MS (0.25 mm ID, 0.25  $\mu\text{m}$  film thickness) from Agilent (Wilmington, DE). Helium carrier gas flow rate was 1.0 mL/min. The injector and GC-MS interface temperatures were maintained at 250 and 280°C, respectively. Temperature of the GC oven was programmed

using different parameters for the analysis of products derived from different derivatization reagents (Table 1). For the 60 m column, a typical GC-MS run took 30 min or less.

The MSD was initially operated under full-scan mode to derive the retention time and full-scan mass spectrum information for each analyte. This information was then used to identify each analyte in standard mixtures and OTC specimens. Full-scan mass spectra were further used for the selection of ions suitable for use in selected ion monitoring (SIM) mode.

## RESULTS AND DISCUSSION

### Resolution

As shown in Section 2.1, a total of 11 derivatization reagents (5 chiral and 6 achiral) were included in this study. MTPA was found to be the most effective chiral derivatization reagent, allowing complete base-line resolution of the 10 structurally closely related compounds of interest shown in Figure 2. (–)-Cathine was not available for this study; however, it should have been resolved, were it included in the mixture.

Shown in Figure 3 are the mass spectra of (+)- $\Psi$ -norephedrine (A), (+)-norephedrine (B), (+)- $\Psi$ -ephedrine (C), (+)- $\Psi$ -ephedrine (D), and (+)-ephedrine- $\text{d}_3$  (E) (all as MTPA derivatives). Mass spectra of the corresponding (–)-somers are practically indistinguishable and, therefore, are not shown.

Derivatization products resulting from the commonly used *l*-TPC also result in good resolution of the analytes, with the exception of (–)-ephedrine and (–)- $\Psi$ -ephedrine. Furthermore, ions that may be used for designating the analytes and their deuterated analogs are less characteristic.

When the determination of analytes' enantiomeric compositions is not needed, HFBA-derivatization was found very effective (Fig. 4). Analysis time can be further reduced by increasing the column temperature following the elution of cathine and norephedrine (peaks 1 and 2 in Fig. 4). Mass spectra of representative compounds with HFBA derivatization are shown in Figure 5.

### Evaluation of analytical parameters

Common analytical parameters, such as limits of detection and quantitation (LOD and LOQ) and extraction efficiency, have been studied. Evaluations were performed on MTPA and HFBA derivatizations using ephedrine as the exemplar compound. Results listed in Table 2 were established using the criteria and procedure described below.

Commonly adapted criteria were used to confirm the presence of a specific analyte in a test sample, i.e., ions



monitored for a specific analyte have to present at an acceptable retention time ( $\pm 2\%$ ) with acceptable intensity ratios ( $\pm 20\%$ ) of that established by a standard. The LOD was defined as the lowest concentration of a standard solution meeting the above criteria, while LOQ was defined as the lowest concentration of a standard solution that met these criteria and with an observed analyte concentration that is within  $\pm 20\%$  of the targeted value.

A series of standard solutions with the following concentrations of ephedrine were used for LOD and LOQ evaluations: 2000, 1000, 500, 250, 100, 80, 60, 40 ng/mL. Applying the criteria described above, the method's LOD and LOQ were determined to be 60 and 80 ng/mL for both HFBA and MTPA derivatives.

### Application to the analysis of common OTC cold remedies

As reported in an earlier study (16), various ephedrine-related compounds were found in readily available OTC cold remedies. Attempts to correlate the occurrences and concentrations of these compounds in OTC remedies with the analytical findings derived from testing athletes during sport-competition events have not been conclusive. With this in mind, the authors thought an additional dimension of information (enantiomeric composition) may help studies of this nature. Thus, various chiral and achiral derivatization approaches were explored, of which the most effective ones were applied to the analysis of a limited number of OTC cold remedies (from 19 manufacturers). Preliminary data shown in Table 3 are promising, and further studies will be pursued and applied to a comprehensive list of OTC remedies, selected prescription medicines, and relevant urine specimen sets.

### CONCLUSION

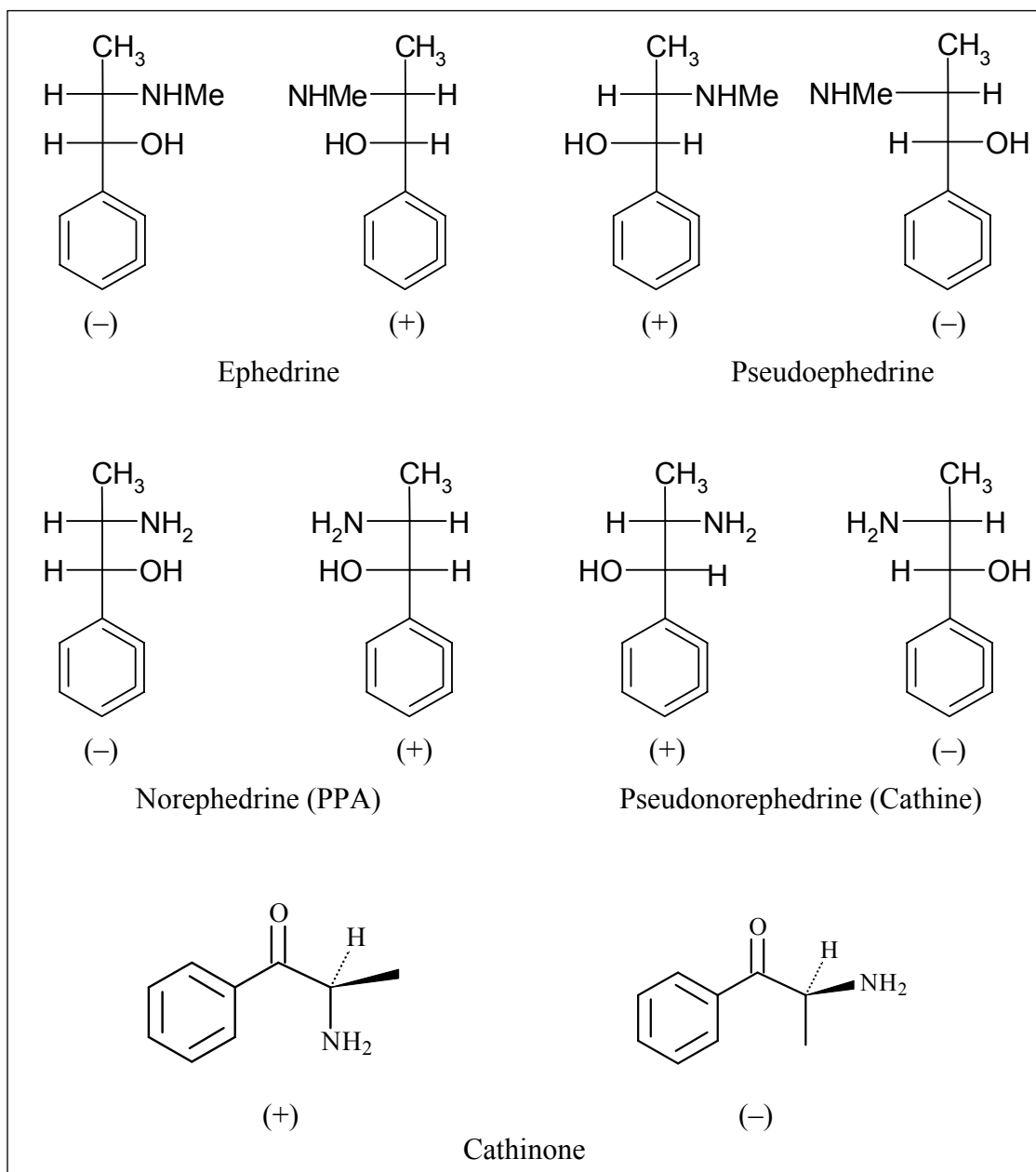
An effective methodology has been established for the analysis of the following structurally related compounds and their enantiomers: cathinone, ephedrine,  $\Psi$ -ephedrine, norephedrine, and nor- $\Psi$ -ephedrine. Using MTPA as the derivatization reagent, the resulting products can be baseline resolved by a 60 m HP 5MS capillary column. HFBA is effective when enantiomeric compositions are not needed. Preliminary application studies have also shown great potentials in providing an additional dimension of information (enantiomeric compositions) for source-tracing studies.

### REFERENCES

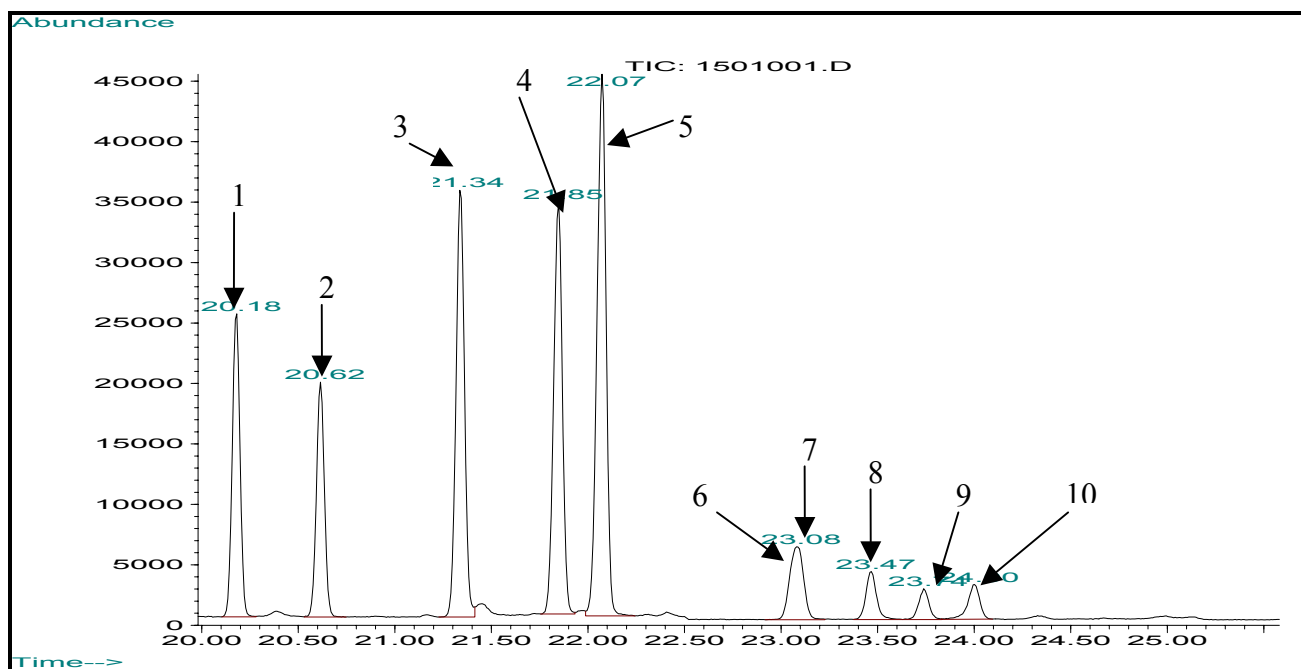
- (1) Long J, Yarnell A, Eds. Chemistry Nobel honors Knowle, Noyori, Sharpless for chiral synthesis. *C&EN*, Oct. 15, 2001, 5.
- (2) Stinson SC. Chiral pharmaceutical, *C&EN*, Oct. 15, 2001, 79–97.
- (3) Noggle FT, Clark CR. Liquid chromatographic analysis of samples containing cocaine local anesthetics and other amines. *J Assoc Off Anal Chem.* 1983; 66: 151–7.
- (4) Ely RA, McGrath DC. Lithium-ammonia reduction of ephedrine to methamphetamine: An unusual clandestine synthesis. *J Forensic Sci.* 1990; 35: 720–3.
- (5) Noggle FT, DeRuiter J, Clark CN. Liquid chromatographic determination of enantiomeric composition of methamphetamine prepared from ephedrine and pseudoephedrine. *Anal Chem.* 1988; 58: 1643–8.
- (6) Andrews KM. Ephedra's role as a precursor in the clandestine manufacture of methamphetamine. *J Forensic Sci.* 1995; 40: 551–560.
- (7) Hutchinson K, Andrews KM. The use and availability of ephedra products in the United States. *Microgram.* 1995; 28: 256–63.
- (8) Department of Health and Human Services, Notice to All DHHS/NIDA Certified Laboratories, Feb. 4, 1991.
- (9) Liu J[R]H, Ku WW. Determination of enantiomeric *N*-trifluoroacetyl-*L*-prolyl chloride amphetamine derivatives by capillary gas-liquid chromatography/mass spectrometry with chiral and achiral stationary phases. *Anal Chem.* 1981; 53: 2180–7.
- (10) Liu J[R]H, Ku WW, Tsay JT, Fitzgerald MP, Kim S. Approaches to drug sample differentiation. III: A comparative study of the use of chiral and achiral capillary column gas chromatography/mass spectrometry for the determination of methamphetamine enantiomers and possible impurities. *J Forensic Sci.* 1982; 27: 39–48.
- (11) Liu J[R]H, Ku WW, Tsay JT, Fitzgerald MP. Separation and characterization of drugs and their enantiomers by capillary column gas-liquid chromatography/mass spectrometry. *J Assoc Off Anal Chem.* 1983; 66: 1443–6.

- (12) Liu J[R]H, Tsay JT. The use of chiral lanthanide shift reagents for the nuclear magnetic resonance spectrometric determination of amphetamine enantiomers. *Analyst*. 1982; 107: 544–9.
- (13) Liu J[R]H, Ramesh S, Tsay JT, Ku WW, Fitzgerald MP, Angelos S, Lins CLK. Approaches to drug sample differentiation. II: Nuclear magnetic resonance spectrometric determination of amphetamine enantiomers. *J Forensic Sci*. 1981; 26: 656–63.
- (14) Sellers JK, Duffitt GL, Gaiones ML, Liu RH. High performance liquid chromatographic analysis of enantiomeric composition of abused drugs. *Forensic Sci Rev*. 1996; 8: 91–109.
- (15) Iwanicki RM, Maier K, Zlotnick JA, Liu RH, Kuo TL, Tagliaro F. Separation of enantiomeric ephedrine and pseudoephedrine — High pressure liquid chromatography and capillary electrophoresis. *J Forensic Sci*. 1999; 44: 470–4.
- (16) Tseng YL, Hsu HR, Kuo FH, Shieh MH, Chang CF. Ephedrine in over-the-counter cold medicines and urine specimens collected during sport competitions. *J Anal Toxicol*. 2003; 27: 359–65.

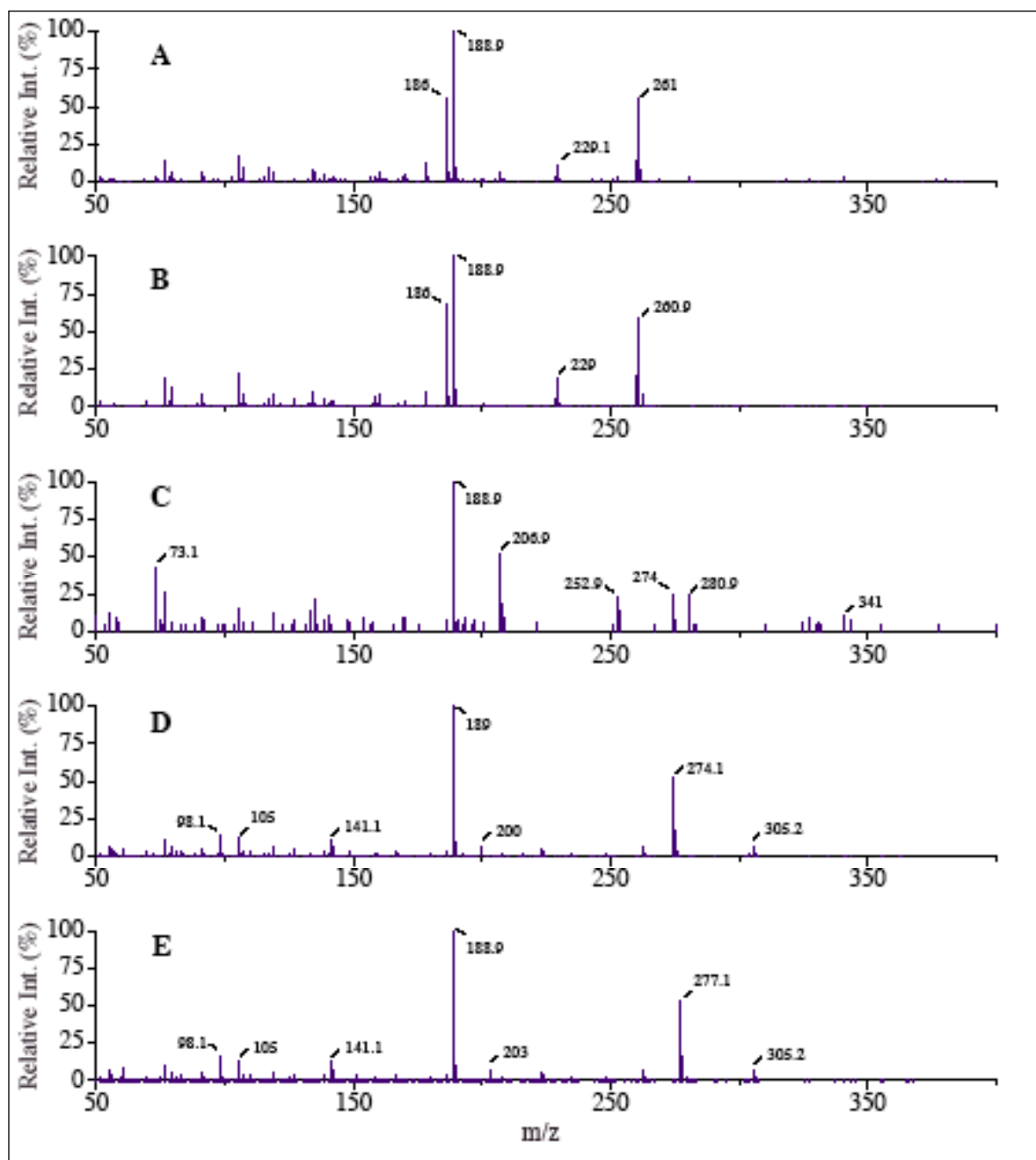
## FIGURES AND TABLES



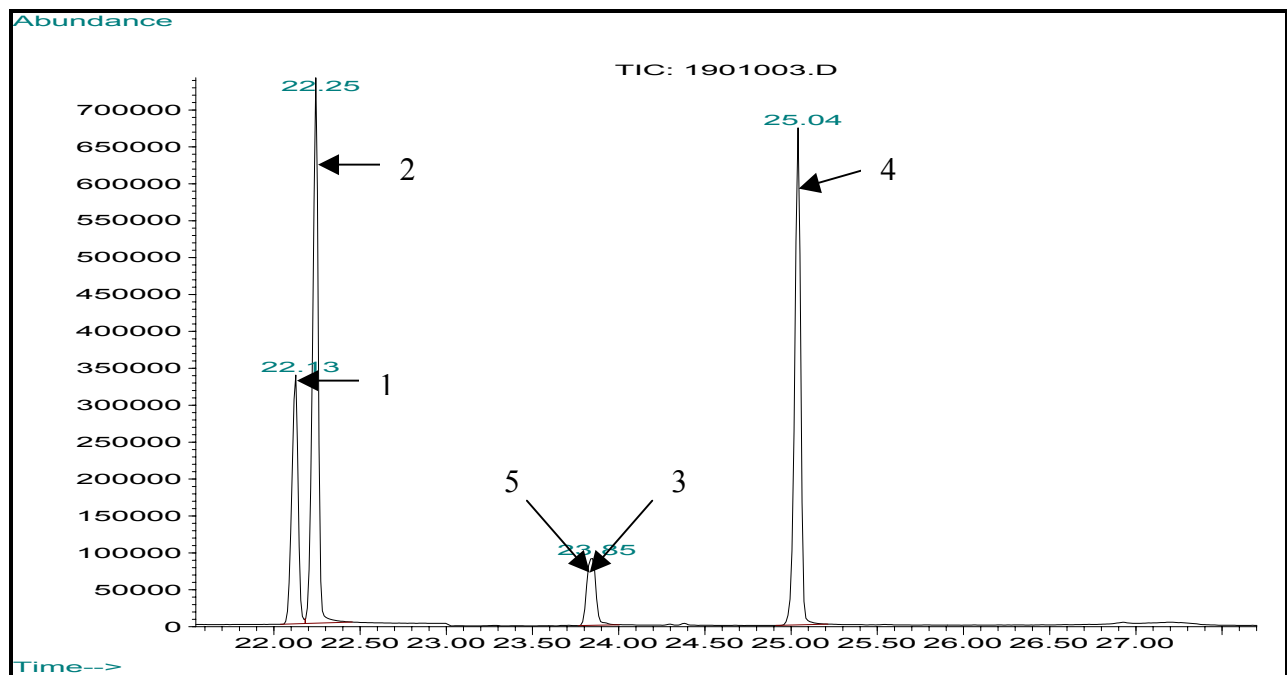
**Figure 1.** Structures of ephedrine and structurally related compounds.



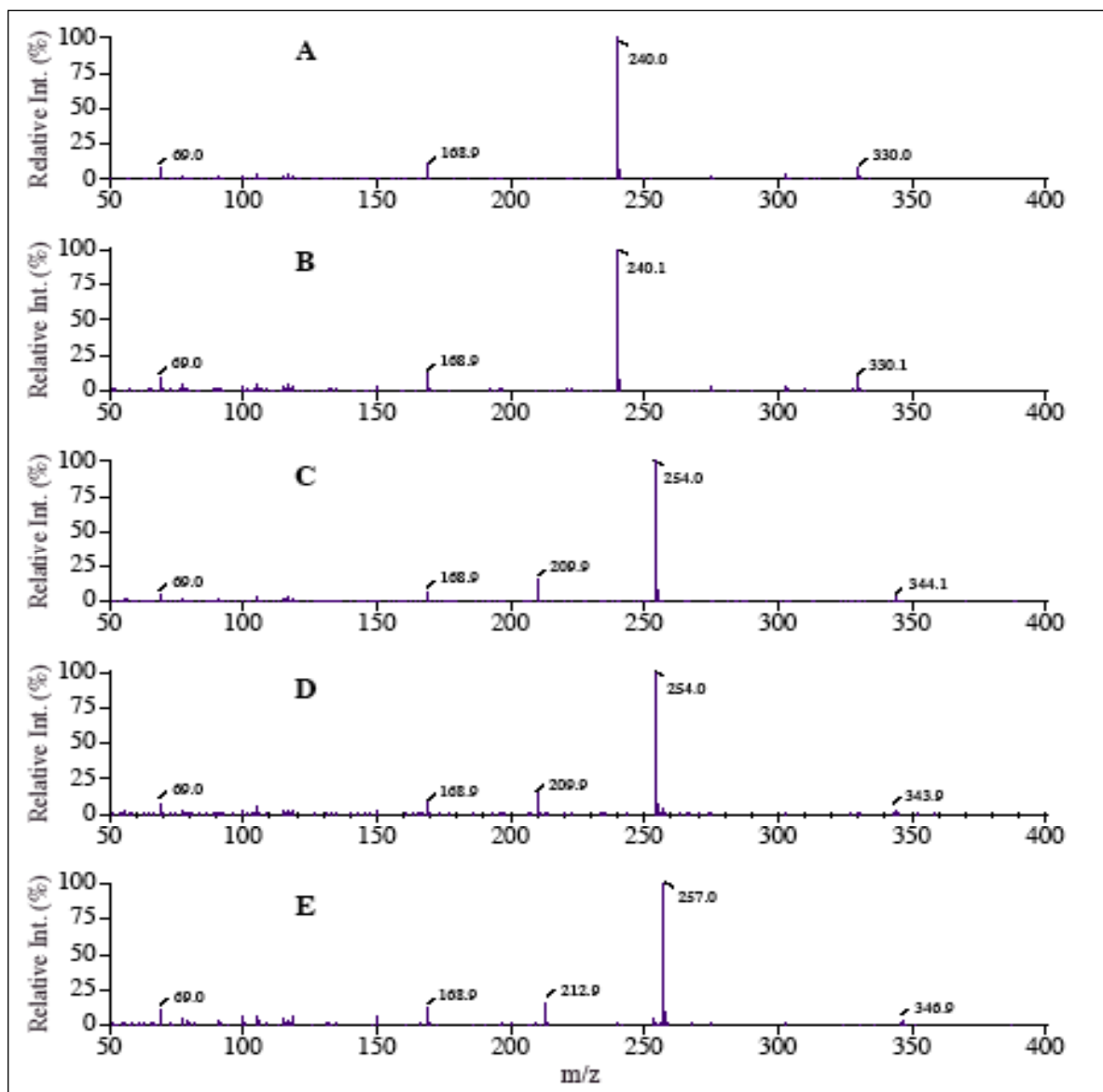
**Figure 2.** Ion chromatogram of MTPA-derivatives: (+)-Cathinone (1), (–)-cathinone (2), (+)-norephedrine (3), (–)-norephedrine (4), (+)-nor- $\Psi$ -ephedrine (5), (+)-ephedrine- $d_3$  (6), (+)-ephedrine (7), (–)-ephedrine (8), (–)- $\Psi$ -ephedrine (9), and (+)- $\Psi$ -ephedrine (10) (all as MTPA-derivatives).



**Figure 3.** Mass spectra of (+)- $\Psi$ -norephedrine (A), (+)-norephedrine (B), (+)- $\Psi$ -ephedrine (C), (+)-ephedrine (D), and (+)-ephedrine- $d_3$  (E) (all as MTPA-derivatives).



**Figure 4.** Ion chromatogram of HFBA-derivatives: Cathine (1), ( $\pm$ )-norephedrine (2), ( $\pm$ )-ephedrine (3), ( $\pm$ )- $\Psi$ -ephedrine (4), (+)-ephedrine- $d_3$  (5) (all as HFBA-derivatives).



**Figure 5.** Mass spectra of (+)-Ψ-norephedrine (A), (+)-norephedrine (B), (+)-Ψ-ephedrine (C), (+)-ephedrine (D), and (+)-ephedrine-d<sub>3</sub> (E) (all as HFBA-derivatives).

## TABLES

**Table 1.** Gas chromatograph oven temperature programming parameters for the analysis of analytes resulting from three derivatization reagents.

Derivatization reagent	Starting (°C)	Hold (Min)	Rate (°C/Min)	End (°C)	Hold (Min)	Rate (°C/Min)	End (°C)	Hold (Min)
HFBA	60	0	5	200	0	25	250	—
l-TPC	160	5	5	250	—	—	—	—
MTPA	160	0	5	220	1	25	250	—

**Table 2.** Evaluation of common analytical parameters resulting from HFBA and MTPA derivatizations.

Parameter	HFBA	MTPA
Recovery (%) <sup>a</sup>	72 ± 4 <sup>b</sup>	90 ± 7 <sup>b</sup>
LOD (ng/mL)	60	60
LOQ (ng/mL)	80	80

<sup>a</sup> Evaluated using triplicates of 2-mL standard solutions containing 500 ng/mL ephedrine.

<sup>b</sup> Mean ± standard deviation.

**Table 3.** Enantiomeric composition (µg/mL) of the targeted 10 analytes found in various cold remedies.

Sample	Derivative	Cathinone		Norephedrine		Nor-ψ-ephedrine		Ephedrine		ψ-Ephedrine	
		(+)	(-)	(+)	(-)	(+)	(-) <sup>b</sup>	(+)	(-)	(+)	(-)
2	MTPA	— <sup>a</sup>	—	—	—	0.039 <sup>b</sup>	— <sup>c</sup>	—	1.84	0.565	—
	HFBA	—	—	—	—	0.123	—	1.50	—	0.850	—
9	MTPA	—	—	—	—	—	— <sup>c</sup>	—	2.39	1.02	—
	HFBA	—	—	—	—	—	—	2.33	—	0.951	—
10	MTPA	—	—	—	—	—	— <sup>c</sup>	—	1.36	0.737	—
	HFBA	—	—	—	—	—	—	1.27	—	0.600	—
15	MTPA	0.186	—	—	—	—	— <sup>c</sup>	—	—	—	—
	HFBA	—	—	—	—	—	—	—	—	—	—
16	MTPA	—	—	—	—	—	— <sup>c</sup>	0.549	0.414	48.1	—
	HFBA	—	—	—	—	—	—	4.62	—	21.9	—
17	MTPA	—	—	—	—	—	— <sup>c</sup>	—	0.111	0.089	—
	HFBA	—	—	—	—	—	—	0.115	—	0.043 <sup>b</sup>	—
19	MTPA	1.35	26.8	1.19	2130	340	— <sup>c</sup>	—	—	—	—
	HFBA	—	—	—	2860	0.940	—	—	—	—	—

<sup>a</sup> Below detection limit (60 ng/mL as established for ephedrine).

<sup>b</sup> Below LOD and LOQ as established for ephedrine. However, distinct chromatographic peaks and mass spectra were observed and the listed concentrations were estimated.

<sup>c</sup> No standard was available; thus, these analytical findings are tentative.