

RESEARCH ARTICLE

Open Access

# Experimental evaluation does not reveal a direct effect of microRNA from the callipyge locus on *DLK1* expression

Huijun Cheng<sup>1,2</sup>, Xuewen Xu<sup>1,2</sup>, Tracy Hadfield<sup>3</sup>, Noelle Cockett<sup>3</sup>, Carole Charlier<sup>1</sup>, Michel Georges<sup>1</sup> and Haruko Takeda<sup>1\*</sup>

## Abstract

**Background:** Polar overdominance at the ovine callipyge (*CLPG*) locus involves the post-transcriptional *trans*-inhibition of *DLK1* in skeletal muscle of *CLPG/CLPG* sheep. The abundant maternally expressed microRNAs (miRNAs) mapping to the imprinted *DLK1-GTL2* domain are prime candidate mediators of this *trans*-effect.

**Results:** We have tested the affinity of 121 miRNAs processed from this locus for *DLK1* by co-transfecting COS1 cells with a vector expressing the full-length ovine *DLK1* with corresponding mimic miRNAs. None of the tested miRNAs was able to down regulate *DLK1* to the extent observed *in vivo*.

**Conclusions:** This suggests that other factors, with or without these miRNAs, are involved in mediating the observed *trans*-effect.

**Keywords:** Callipyge, Muscle development, Polar overdominance, *DLK1*, MicroRNA, *Trans*-effect, Post-transcriptional gene regulation, Reporter assay

## Background

The callipyge phenotype is a muscular hypertrophy that is exclusively expressed by heterozygous sheep inheriting the *CLPG* mutation from their sire (genotype +<sup>Mat</sup>/*CLPG*<sup>Pat</sup>). This non-Mendelian mode of inheritance with parent-of-origin effect is referred to as polar overdominance [1,2]. The underlying increase in the proportion and size of fast twitch muscle fibers is thought to be caused by ectopic expression of *DLK1* and/or *PEG11* (also known as *RTL1*) protein in skeletal muscle of +<sup>Mat</sup>/*CLPG*<sup>Pat</sup> animals. This ectopic expression results from the inactivation – by the *CLPG* A to G point mutation – of a muscle-specific silencer element that post-natally downregulates the expression of *DLK1* and *PEG11* in *cis* [3–6]. *CLPG*<sup>Mat</sup>/+<sup>Pat</sup> animals do not express the phenotype because *DLK1* and *PEG11* genes are imprinted and only expressed from the paternal allele. It is thought that *CLPG/CLPG* animals do not express the phenotype because of the additional ectopic

expression of non-coding RNAs (ncRNAs) that are (i) imprinted and expressed from the maternal allele, (ii) controlled in *cis* by the same muscle-specific silencer element, and (iii) post-transcriptionally down-regulating *DLK1* and *PEG11* in *trans* [7]. Maternally expressed ncRNA genes in the *CLPG* locus include four long ncRNAs (lncRNA) (*GTL2*, *anti-PEG11*, *RIAN* and *MIRG*) as well as 110 and 47 embedded miRNAs and C/D snoRNAs, respectively [8–10]. For *PEG11* the *trans*-inhibition results from RNA-induced silencing complex (RISC)-mediated cleavage of *PEG11* transcripts by at least three perfectly complementary miRNAs processed from the maternally expressed *anti-PEG11* lncRNA [11]. For *DLK1*, the mechanism of the *trans*-inhibition remains unknown. The present working model for the callipyge phenomenology is summarized in Additional file 1: Figure S1.

When compared to +<sup>Mat</sup>/*CLPG*<sup>Pat</sup> animals, *DLK1* levels in *CLPG/CLPG* animals are more severely reduced at the protein (~10-fold) than at the mRNA (~3-fold) level [5,12,13]. This pattern is compatible with a miRNA-mediated effect that would affect mRNA stability and translation. It made the abundant miRNAs from

\* Correspondence: htakeda@ulg.ac.be

<sup>1</sup>Unit of Animal Genomics, GIGA-R & Faculty of Veterinary Medicine, University of Liège (B34), 1 Avenue de l'Hôpital, 4000 Liège, Belgium  
Full list of author information is available at the end of the article

the *DLK1-GTL2* domain prime candidate mediators of the observed *trans*-inhibition. However, bioinformatic analyses did not reveal a striking affinity of any of these miRNAs for *DLK1*. At best, there was some evidence suggesting that they might have an unusual affinity for the open reading frame (ORF) of *DLK1* when assumed to act jointly as a team [10]. As bioinformatic target predictions reputedly have limited sensitivity and specificity, we wanted to experimentally evaluate the effect of the miRNAs from the *DLK1-GTL2* domain on ovine *DLK1*.

## Results

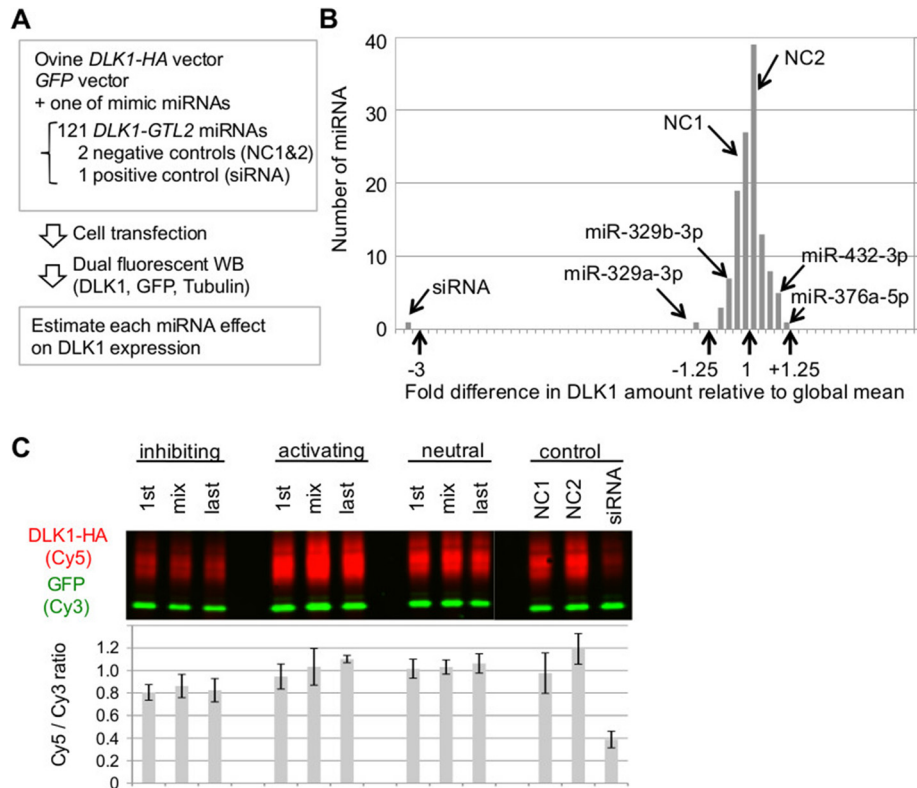
Given the prior evidence that (i) the miRNA from the *DLK1-GTL2* domain might target the ORF of *DLK1* rather than its 3' untranslated region (UTR) [10], and (ii) that their effect might be more pronounced on protein than mRNA concentrations [5], we decided to develop a reporter assay that would (i) express full-length ovine *DLK1* transcripts including 5' UTR, ORF and 3' UTR, and (ii) assay protein rather than mRNA levels. We first performed 5' and 3' rapid amplification of cDNA ends (RACE) experiments using RNA from sheep skeletal muscle to accurately map the predominant transcription start and poly-adenylation sites of *DLK1* (see Additional file 1: Figure S2). We then assembled a 1,405-bp fragment corresponding to 209-bp of ovine upstream sequence (encompassing the transcription start site mapped 174-bp upstream of the ATG start codon), 954-bp of ORF corresponding to the ovine *DLK1* C2 isoform appended with a 9-residue human influenza haemagglutinin (HA) carboxyterminal tag, and 242-bp of downstream sequences including an *XhoI* restriction site (6-bp) and the 236-bp ovine *DLK1* 3' UTR (ending exactly at the position of the ovine poly-adenylation site) (see Additional file 1: Figure S3A; Additional file 1: Text S1). We selected the C2 isoform of *DLK1* as (i) it is at least 100 times more abundant than the A isoform in ovine skeletal muscle between -2 and +8 weeks relative to birth, and (ii) the ratio of the transcript levels of the C2 and A isoforms is not affected by *CLPG* genotype (implying that both isoforms encompass the determinants required for the *trans*-effect)[5,14]. The HA tag was introduced because available anti-human *DLK1* antibodies did not effectively recognize ovine *DLK1* (data not shown). The corresponding fragment was cloned in a slightly modified pcDNA3.1(-) vector, 1-bp downstream of the vector-specific transcriptional start site and 30-bp upstream of the vector-specific bovine growth hormone polyadenylation site. The resulting construct (p3.1M-*DLK1*-HA) was completely sequenced to confirm its integrity. It was shown, upon transfection in COS1 cells, (i) to generate a transcript of expected size (~1.4-kb) (Northern blotting), (ii) bounded by the vector-specific transcription start and polyadenylation

sites (and hence appended with 1-base of upstream and 30-bases of downstream vector-specific sequences) (5' and 3' RACE), and (iii) producing a protein of expected size recognized by anti-HA antibodies (~34 kDa after deglycosylation, Western blotting) (see Additional file 1: Figure S3). Within the examined range, *DLK1* amounts estimated by phosphorimaging and densitometry increased linearly with loaded quantities ( $r^2 = 0.98$ ) (see Additional file 1: Figure S4).

We designed 121 mimic miRNAs, corresponding to one or two isomirs for 108 of the 110 miRNA species from the *DLK1-GTL2* domain detected in ovine muscle [10] (see Additional file 2: Table S1 and Methods). In addition, we designed one perfectly complementary anti-*DLK1* siRNA as positive control and two miRNAs, corresponding to scrambled miR-127 and miR-377, as negative controls (hereafter referred to as siRNA, NC1, and NC2, respectively).

We transfected COS1 cells with a mixture of *DLK1*-expressing p3.1M-*DLK1*-HA vector, GFP-expressing pcDNA3-GFP vector (to evaluate and correct for variation in transfection efficiency and gel-loaded protein amount), and individual mimic miRNA (Figure 1A). We performed  $\geq 4$  independent transfections for each miRNA, and ran  $\geq 2$  independent Western blot experiments per transfection, yielding an average of 8.3 usable measures per miRNA. *DLK1* amounts, estimated by densitometry, were normalized to GFP amounts as detailed in Methods (see Additional file 1: Figure S5).

As expected (because of its perfect complementarity and predicted cleavage activity), the siRNA positive control exhibited a strong inhibitory effect. It behaved as a complete outlier, reducing the amount of *DLK1* ~3-fold when compared to the average of the two negative controls, and this effect was highly significant ( $p = 2 \times 10^{-16}$ ) (Figure 1B and see Additional file 2: Table S2). Seven of the 121 tested miRNAs significantly ( $p \leq 0.05/121 = 4 \times 10^{-4}$ ) altered *DLK1* levels when compared to the average of the negative controls. One of these caused a reduction in *DLK1* levels (miR-329a-3p, 1.25-fold reduction,  $p = 3.8 \times 10^{-4}$ ), while the remaining six increased amounts of *DLK1* ( $\leq 1.28$ -fold increase,  $p \geq 1 \times 10^{-8}$ ). Overall, the 121 miRNAs and the two negative controls appeared to belong to one population (Figure 1B). Accordingly, when compared to the average of all miRNAs (except for the siRNA), one miRNA significantly decreased *DLK1* levels (miR-329a-3p, 1.31-fold reduction,  $p = 3.2 \times 10^{-5}$ ), and two significantly increased *DLK1* levels (miR-376a-5p, 1.25-fold increase,  $p = 5 \times 10^{-7}$ ; miR-432-3p, 1.18-fold increase,  $p = 1.8 \times 10^{-5}$ ). MiR-329b-3p, which differs from miR-329a-3p at only two residues near the 3' end, reduced *DLK1* amounts 1.1-fold when compared to the overall average, but this was not significant when accounting for multiple testing ( $p = 0.047$ ). MiR-329a-3p



**Figure 1 Experimental evaluation of the effect of microRNA from the callipyge locus on DLK1 expression.** (A) Overview of experimental procedure of ovine DLK1 reporter assay. We co-transfected COS1 cells with a mixture of ovine full-length (5' UTR, ORF, and 3' UTR) *DLK1*-expressing vector (p3.1M-*DLK1*-HA), *GFP*-expressing vector (pcDNA3-*GFP*) for normalizing transfection efficiency and gel-loaded protein amount, and one of 121 mimic miRNA candidates from the *DLK1*-*GTL2* imprinted domain, two negative controls (NC1, NC2), and one siRNA targeting the *DLK1* ORF as positive control. To facilitate protein quantification, an HA epitope was engineered at the carboxyterminal end of *DLK1*. Amounts of *DLK1*, *GFP*, and endogenous Tubulin were estimated by dual fluorescent Western blot (WB). Effect of each miRNA on *DLK1* translation was estimated by normalizing *DLK1* with either *GFP* or Tubulin amounts (corrected *DLK1* amount). (B) Distribution of effects of the 121 mimic miRNAs on *DLK1* protein amounts. Effects are expressed as fold difference with respect to the overall (minus siRNA) mean. The effects of two negative (NC1, NC2) and one positive (siRNA) controls are shown, as are the effects of the most inhibiting miR-329a-3p, the closely related miR-329b-3p, and the most activating miR-376a-5p and miR-432-3p. *GFP* was used for normalization. (C) Evaluation of synergistic action of multiple miRNA on *DLK1* amount. We selected seven miRNAs consistently showing inhibiting, activating, and neutral effects on *DLK1* amount. COS1 cells were co-transfected with the p3.1M-*DLK1*-HA and pcDNA3-*GFP* vectors along with either a mixture of the seven miRNAs (mix), or a single miRNA having shown the lowest (1st) or highest (last) corrected *DLK1* amount upon transfection in each group. *DLK1*-HA and *GFP* protein levels were estimated by dual fluorescent WB analysis (upper panel). Means of corrected *DLK1* amounts with standard deviations for four independent experiments are shown (lower panel).

and miR-329b-3p have two 6-mer matches in the ORF and one in the 3' UTR. However, neither of these is evolutionary conserved (see Additional file 1: Figure S6). miR-329a-3p and miR-329b-3p accounted respectively for 0.0014% and 0.19% of miRNA molecules derived from the *DLK1*-*GTL2* domain and 0.00043% and 0.056% of total miRNA molecules in skeletal muscle of *CLPG*/*CLPG* animals [10]. It is also noteworthy that we did not observe a convincing correlation between effect on *DLK1* levels and bioinformatically predicted affinity for *DLK1*, whether using seed-based scores [15] or Miranda [16], and whether considering the 3' UTR, the ORF, the 5' UTR or the full-length *DLK1* transcript (see Additional file 1: Figure S7; Additional file 2: Table S2).

Taken together, these data suggest that none of the tested miRNAs effectively regulates *DLK1*. Although the effect of miR-329a-3p is significant, we consider the evidence insufficient to claim that it is biologically relevant. Indeed, (i) the effects of the 121 tested miRNAs are approximately normally distributed, encompass the effects of the two negative controls, and are not correlated with predicted affinity for *DLK1*, (ii) there are more miRNAs that have a significant positive effect than miRNAs that have a negative effect on *DLK1* expression (which is unlikely to reflect a genuine biological activity given the known *modus operandi* of miRNAs), (iii) the effect of miR-329a-3p becomes insignificant when considered jointly with the closely related miR-329b-3p, (iv) the

expression level of miR-329a-3p in ovine skeletal muscle is extremely low. What is certain is that none of the tested miRNAs is capable – under the utilized conditions – to single-handedly downregulate *DLK1* to the extent that is observed *in vivo* in skeletal muscle of *CLPG/CLPG* sheep.

It remains possible that the observed *trans*-inhibition of *DLK1* results from the synergistic action of multiple miRNAs. Although we could obviously not test all combinations of miRNAs, we transfected COS1 cells with pools of seven miRNAs chosen (i) amongst the most inhibiting, and (ii) most activating miRNAs. The pools of extremes inhibited, respectively enhanced, *DLK1* expression to a degree similar to their constituent miRNAs, but did not reveal convincing evidence for a synergistic effect (Figure 1C and see Additional file 1: Figure S8).

## Discussion

The aim of this study was to experimentally verify whether any of the miRNAs processed from the ovine *DLK1-GTL2* domain might post-transcriptionally down-regulate *DLK1* to a degree that is commensurate with what is observed in skeletal muscle of *CLPG/CLPG* sheep. Although one miRNA (miR-329a-3p) yielded an effect deemed significant even when accounting for multiple testing, it was not considered to be relevant with regards to the *trans*-inhibition of *DLK1* in *CLPG/CLPG* animals for the reasons given above. Of note, when performing ANOVA analysis the “miRNA effect” (not including the three controls) was highly significant ( $p < 2 \times 10^{-16}$ ). Thus, the effects of at least some miRNAs are repeatable despite being modest. This could reflect subtle effects on *DLK1*, on GFP, or on the cellular machinery.

Negative results are in essence uncomfortable to interpret. They may be false negatives because the established reporter assay misses an essential component that is required for the responsible miRNAs to exert their effect. MiRNA-mediated regulation of *DLK1* may require auxiliary *trans*-acting factors not expressed in COS1 cells. The expressed transcripts corresponded for >93% to the ovine *DLK1* C2 mRNA, yet included 36-bases of extra upstream, 33-bases of extra internal (HA tag), and 30-bases of extra downstream sequence, and these may have affected miRNA-target interactions. To discriminate between a miRNA-dependent versus independent mechanism, we have conducted immuno-precipitation experiments using antibodies directed against the Argonaut components of the RISC [17], hoping to show an increase in *DLK1* co-immunoprecipitation in skeletal muscle of *CLPG/CLPG* when compared to  $+^{Mat}/CLPG^{Pat}$  animals, but have so far failed to obtain convincing results (data not shown).

Alternatively, our results may be true negatives and indicate that the *trans*-inhibition of *DLK1* observed *in vivo* is not a post-transcriptional regulation mediated directly by miRNAs processed from the *DLK1-GTL2* domain. It is worthwhile noting in this regard that, while the larger effect on *DLK1* protein than on *DLK1* transcripts is reminiscent of early reports of the *modus operandi* of the archetypical animal miRNA *lin-4* on its *lin-28* and *lin-14* targets in *C. elegans*, *lin-4*'s mode of action has since been revisited and shown to be more in line with the canonical one in which mRNA destabilization accounts for the major component of repression [18,19]. Moreover, the ~3-fold and ~10-fold down-regulation of *DLK1* observed respectively at the mRNA and protein levels *in vivo* would be rather extreme for miRNA-dependent effects [20,21]. Alternative hypotheses include a direct post-transcriptional effect of one or several of the maternally expressed lncRNAs, or an indirect post-transcriptional effect of anyone of the ncRNAs from the domain. As for most lncRNAs, little is known about the function of the maternally expressed *GTL2*, *RIAN* and *MIRG* genes. It has been suggested that *GTL2* recruits Polycomb Repressive Complex 2 (PRC2) to down-regulate the reciprocally imprinted *DLK1* gene in *cis* [22]. Preliminary results of the co-transfection of COS1 cells with p3.1M-*DLK1*-HA with a vector expressing the predominant isoform of ovine *GTL2* (corresponding to human *GTL2* variant 1, NR\_002766.2) does not support a direct inhibitory *trans*-effect of *GTL2* on *DLK1* expression, on the contrary (see Additional file 1: Figure S9). The hypothesis of an indirect effect posits that the maternally expressed ncRNAs affect targets that do not originate from the *DLK1-GTL2* locus, and that these in turn affect *DLK1* expression. Such indirect effects may manifest themselves by changes in transcript levels that could be studied by comparing the transcriptome (including small RNAs) of *CLPG<sup>Mat</sup>/+<sup>Pat</sup>* with that of  $+/+$  animals, and efforts towards that goal are in progress. Along similar lines, Bidwell *et al.* [23] recently showed that muscle of *CLPG/CLPG* animals exhibited lower expression of a group of key regulatory genes for muscle development (e.g. *ZFP106*, *RPS6KA3*, *MEF2A*), that might render them less responsive to the hypertrophic stimuli of the paternal allele-specific genes.

The apparently stronger effect on *DLK1* protein (~10-fold) than on *DLK1* transcript (~3-fold) level suggests a post-transcriptional mechanism. This hypothesis received considerable support from the demonstration of the RISC-mediated cleavage of *PEG11* by miRNAs processed from anti-*PEG11* [11]. However, we cannot totally exclude a transcriptional mechanism. It may be worthwhile, in this regard, to perform ribosome profiling [24] experiments to verify whether the predicted translational inhibition of *DLK1* transcripts in *CLPG/CLPG* animals



when compared to +<sup>Mat</sup>/CLPG<sup>Pat</sup> animals is indeed observed. Lack of such effect would force us to re-evaluate scenarios involving transcriptional regulation.

More work will be needed to gain a full understanding of the molecular mechanisms underlying the *trans*-inhibition of *DLK1*, which is key element of polar overdominance at the *CLPG* locus.

## Conclusions

Contrary to that of *PEG11*, the *trans*-inhibition of *DLK1* that is observed in *CLPG/CLPG* sheep and lies at the heart of polar overdominance, may not depend on post-transcriptional regulation by miRNAs from the *DLK1-GTL2* domain.

## Methods

### Ethical statement

All animal procedures were carried out in strict accordance with the recommendations in the Guide for the Care and Use of Laboratory Animals of Utah State University and approved by the Animal Ethics Committees of Utah State University (IACUC #386).

### RACE

The 5' and 3' ends of *DLK1* transcripts were determined using the GeneRacer Kit (Invitrogen, Carlsbad, CA) according to the manufacturer's instructions. Briefly, total RNA was isolated either from skeletal muscle (*longissimus dorsi*) of 2-week-old sheep of the four possible *CLPG* genotypes (+/+, +<sup>Mat</sup>/CLPG<sup>Pat</sup>, CLPG<sup>Mat</sup>/+, Pat, CLPG/CLPG), or from COS1 cells 24 hrs after transfection with the ovine *DLK1* expressing p3.1M-*DLK1*-HA vector. For 5' RACE, 3 µg of total RNA was used for ligation of the GeneRacer RNA Oligo to the 5' end of RNA with a 5' cap structure. RNA was then reverse transcribed using SuperScript III reverse transcriptase using random hexamers. For 3' RACE, cDNA was synthesized using the GeneRacer Oligo dT primer. These cDNAs were then amplified with the GeneRacer 5' and *DLK1*-specific 5' GSP-A primers for 5' RACE, and the GeneRacer 3' and *DLK1*-specific 3' GSP-S primers for 3' RACE, respectively. Nested PCR amplifications were performed using diluted PCR products with the GeneRacer 5' nested and *DLK1*-specific 5' NGSP-A primers for 5' RACE, and the GeneRacer 3' nested and *DLK1*-specific 3' NGSP-S primers for 3' RACE, respectively. For both 5' RACE PCRs, we used the Expand Long Template PCR System (Roche Diagnostics, Basel, Switzerland) with PCR conditions: 94°C for 2 min; 10 cycles of 94°C for 10 sec, 62°C for 30 sec and 68°C for 1 min; 22 cycles of 94°C for 15 sec, 62°C for 30 sec and 68°C for 1 min; and 68°C for 7 min. We used the Phusion DNA polymerase (Finnzymes, Espoo, Finland) for the 3' RACE PCRs using touchdown PCR condition: 98°C for 30 sec; 8 cycles of

98°C for 15 sec, 66°C for 20 sec and 72°C for 40 sec; 20 cycles of 98°C for 15 sec, 62°C for 20 sec and 72°C for 40 sec; and 72°C for 3 min. The nested PCR products were analyzed by agarose gel electrophoresis, purified from the gel, and sequenced either directly or after subcloning in the pCR2.1 TA cloning vector (Invitrogen) to determine the 5' and 3' ends of the *DLK1* transcripts. All primer sequences are listed in Additional file 2: Table S3.

### Generation of the p3.1M-*DLK1*-HA *DLK1* expression vector

The ovine *DLK1* ORF (C2 isoform) was PCR-amplified using ovine skeletal muscle cDNA with primers p3.1-CS and p3.1-CA containing *Xba*I and *Xho*I sites at their 5' ends, respectively. The reverse primer (p3.1-CA) included a HA tag sequence (AGCGTAGTCTGGG ACGTCGTATGGGTA) to add the HA epitope at the carboxyterminus of ovine *DLK1* protein. The *Xba*I/*Xho*I double-digested PCR fragment was cloned into the *Xba*I/*Xho*I sites of the pcDNA3.1(-) mammalian expression vector (Invitrogen) to create an intermediate vector p3.1-*DLK1*-CDS-HA. The 5' UTR and a part of the coding sequence of ovine *DLK1* was amplified from genomic DNA using the Expand Long Template PCR system with primers p3.1-5S containing an *Xba*I site at the 5' end and p3.1-5A encompassing an endogenous *Nco*I site in the middle of the primer. The ovine *DLK1* 3' UTR was PCR-amplified using genomic DNA with primers, p3.1-3S and p3.1-3A containing *Xho*I and *Eco*RI sites at their 5' ends, respectively. The two resultant PCR fragments were double-digested with *Xba*I/*Nco*I and *Xho*I/*Eco*RI, respectively, and inserted sequentially into the p3.1-*DLK1*-CDS-HA vector at the corresponding sites to generate the p3.1-*DLK1*-FL-HA vector. To minimize vector sequence in the transcripts (more specifically the multiple cloning region between the transcription start and end sites of the vector), we modified the original pcDNA3.1(-) vector (referred to as p3.1M). We introduced an *Xba*I recognition site adjacent to the putative transcriptional start site and an *Eco*RI site upstream of the bovine growth hormone polyadenylation signal of the vector using the Quickchange lightening site-directed mutagenesis kit (Stratagene, La Jolla, CA) with oligonucleotides pc3.1-*Xba*I-intro-U/D and pc3.1-*Eco*RI-intro-U/D, respectively. The insert of the p3.1-*DLK1*-FL-HA (containing the HA tagged full-length of ovine *DLK1*) was excised by an *Xba*I/*Eco*RI double-digestion and transferred to the modified p3.1M vector at the corresponding sites to generate the final p3.1M-*DLK1*-HA vector. Orientation and integrity of the 1,405-bp insert was confirmed by sequencing using the BigDye Terminator v3.1 Cycle Sequencing kits and the 3730 DNA Analyzer (Applied Biosystems, Foster City, CA) in three sequencing reactions using primers, Seq-S, Seq-A,

and 3' NGSP-S. Primer information is available in Additional file 2: Table S3.

#### Mimic miRNAs – choice of the system

To co-express miRNAs from the *DLK1-GTL2* domain with the vector expressing *DLK1*, we initially elected to clone the corresponding miRNA precursors in expression vectors and co-transfect them. The hope was that one vector would allow for the expression of multiple miRNA species and isomirs (one miRNA precursor can give rise to two miRNA “species” (from the 5p and 3p arms, respectively), that can each come in multiple forms or “isomirs”), and that this would optimally mimic the condition prevailing *in vivo* at minimum cost. We realized, however, that the expression levels of the different miRNA species varied enormously, without necessarily mimicking the *in vivo* ratios [10], at concentrations that would often be <1% of endogenous *let7d* levels (data not shown). As this would make comparisons between miRNAs nearly impossible, we opted for the use of synthetic “mimic” miRNAs.

#### Mimic miRNAs – molecular design

We evaluated the efficacy of different designs of mimic miRNAs using the luciferase assay described in Takeda et al. [17] (see Additional file 1: Figure S10). It is based on the pRL-4xTex and pRL-4xRom vectors, that each contains four tandem repeats respectively with and without miR-1 target sites. We compared four types of mimic miRNAs: (i) an unmodified RNA duplex corresponding to the endogenous mature and star ovine miR-1 miRNAs (hence with bulge, wobble base pairs and mismatch), (ii) an unmodified RNA duplex corresponding to the mature ovine miR-1 and its perfect reverse complement, with 2-nt 3' overhangs at both ends (UU for the passenger strand), (iii) the same as in (ii) but with modified 5' ends aimed at promoting the incorporation of the guide strand into the RISC complex: 5' P (phosphate) for the mature miRNA strand and/or 5' NH<sub>2</sub> for the passenger strand, and (iv) the proprietary miR-1 miRNA Precursor purchased from Ambion. While type (i) (i.e. a copy of the endogenous double-stranded miRNA) did not have any effect, types (ii), (iii) and (iv) worked equally well. We opted for type (ii) with unmodified mature strand and 5' NH<sub>2</sub> modified passenger strand. The 3' overhangs for all passenger strands corresponded to UU dinucleotides. Corresponding oligonucleotides were purchased from GenePharma (Shanghai, China).

#### Mimic miRNAs – sequence determination

To select representative mimic miRNA sequences for all miRNAs from the *DLK1-GTL2* domain, we simultaneously utilized (i) previously generated RNA-Seq

information that was used to establish a catalogue of miRNAs expressed in ovine skeletal muscle with special emphasis on the *DLK1-GTL2* domain [10], (ii) miRNA characteristics inferred from meta-analyses of mouse and *Drosophila melanogaster* small RNAs [25,26], and (iii) information of human, mouse, and bovine orthologs from miRBase [27]. In most cases, the selected sequences corresponded to the most abundant isomirs in the ovine RNA-Seq data, matching the miRBase registered sequences, and formed a canonical mature and star miRNA duplex with 3' overhangs. To those, we added (i) “star” sequences that were not registered in the miRBase but were observed in our RNA-Seq data, and (ii) alternative isomir with 5' heterogeneity that represented more than one third of the reads of a corresponding miRBase-registered miRNA or with more than 200 reads in any of the RNA-Seq libraries. A-to-I editing [10] or untemplated nucleotide addition (data not shown) were observed in some of miRNAs from the *DLK1-GTL2* domain. This was accounted for by synthesizing isomirs with mixed bases at the corresponding sites. The complete list of 121 tested mimic miRNAs is provided in Additional file 2: Table S1. MiRNAs derived from the 5p and 3p arms of a miRNA hairpin precursor are suffixed with -5p and -3p, respectively, irrespective of their relative expression levels.

To design negative control miRNA, we first shuffled sequences of five miRNAs (oar-miR-433-3p, 127-3p, 3957-3p, 377-3p, and 376c-3p) ten times each. We then counted the number of 8-mer, 7mer-A1, 7mer-m8, and 6-mer seed matches [15] of these shuffled sequences to the full-length ovine *DLK1* C2 isoform. In addition, to minimize off-target effects on unintended endogenous RNAs, we predicted the number of genome wide conserved miRNA target sites across most mammals using the TargetScan Custom software [28,29]. Two of the shuffled sequences that showed neither 6-, 7- nor 8-mer seed matches to the ovine *DLK1* and the lowest number of predicted genome-wide conserved target sites (seven and one conserved targets, respectively) were selected as negative controls (designated as Scr-oar-miR-127-3p (NC1) and Scr-oar-miR-377-3p (NC2)). In addition, we purchased one siRNA targeting the ovine *DLK1* ORF by using the BLOCK-iT RNAi Designer (Invitrogen), to be used as positive control.

#### Cell culture and transient transfection

COS1 cells were cultured in Dulbecco's modified Eagle's medium supplemented with 10% fetal bovine serum and 0.1 mM non-essential amino acids, 100 units/ml penicillin and 100 mg/ml streptomycin at 37°C (GIBCO, Renfrewshire, UK). One day before transfection, 0.5 × 10<sup>5</sup> cells were seeded in a 12-well plate in 800 µl of growth medium without antibiotics. We then co-

transfected the cells with 200  $\mu$ l of Opti-MEM medium (GIBCO) containing 200 ng of the p3.1M-*DLK1*-HA vector, 400 ng of pcDNA3-*GFP* vector (Plasmid ID: 13031 obtained from Addgene, Cambridge, MA) along with 40 pmols of synthetic mimic miRNA (GenePharma)(final concentration 40 nM) or 5 pmols of siRNA (Invitrogen) using 4  $\mu$ l of Lipofectamin 2000 (Invitrogen) according to the manufacturer's instructions.

#### Dual fluorescence Western blotting

Total protein was extracted from COS1 cells 24 hrs after transfection using a modified RIPA buffer containing 50 mM Tris-HCl (pH 7.6), 150 mM NaCl, 1% Igepal CA-630, 0.25% sodium deoxycholate, 1 mM EDTA and the complete protease inhibitor cocktail (Roche). The lysate was centrifuged at 12,000  $\times$  g for 15 min at 4°C and protein concentration of the supernatant was determined using the micro BCA Protein Assay Kit (Pierce, Rockford, IL) according to the manufacturer's instructions. Eight  $\mu$ g of protein were boiled for 5 min in Laemmli buffer (62.5 mM Tris-HCl (pH 7.6), 2% sodium dodecyl sulfate (SDS), 10% glycerol, 0.004% bromophenol blue, 5%  $\beta$ -mercaptoethanol) and loaded on a NuPAGE Novex 4-12% Bis-Tris Midi gel (Invitrogen). Electrophoresis was performed with the XCell4 SureLock Midi-Cell electrophoresis chamber (Invitrogen) at 200 V for 30 min at room temperature in the NuPAGE MOPS SDS Running buffer (Invitrogen). Protein was then transferred to a Hybond-LFP Polyvinylidene difluoride (PVDF) membrane (GE Healthcare, Buckinghamshire, UK) at 200 mA for 90 min at 4°C using the NuPAGE transfer buffer (Invitrogen) in a Criterion Blotter (BioRad, Hercules, CA). The membrane was blocked with 10% non-fat dry milk in PBST buffer (1 mM  $\text{KH}_2\text{PO}_4$ , 10 mM  $\text{Na}_2\text{HPO}_4$ , 137 mM NaCl, 2.7 mM KCl, 0.1% Tween 20) either at room temperature for 1 hr or at 4°C overnight. The membrane was incubated sequentially with a series of antibodies diluted in the blocking buffer at room temperature for 1 hr. We used a rabbit polyclonal anti-HA tag antibody (1:4000 dilution) (ab9110, Abcam, Cambridge, UK), an ECL Plex anti-rabbit IgG antibody conjugated with Cy5 dye (1:2500) (PA45011, GE Healthcare), a mouse monoclonal anti-GFP antibody (1:1000) (clone JL-8, Clontech Laboratories, Mountain View, CA), a mouse monoclonal anti- $\alpha$ -Tubulin antibody (1:8000) (T6074, Sigma, St. Louis, MO), and an ECL Plex anti-mouse IgG antibody conjugated with Cy3 dye (1:4000) (PA43010, GE Healthcare). Membranes were washed three times for 10 min in PBST buffer with gentle shaking between incubations. The membrane was then dried at 37°C for 1 hr, followed by scanning with the Typhoon 9400 scanner (GE healthcare). Band intensities corresponding to HA-tagged *DLK1*, *GFP*, and *Tubulin* were quantified using the ImageQuant TL

software (GE healthcare). For normalization, the band intensities were first divided by the corresponding membrane-specific averages (not including siRNA), yielding "relative" *DLK1*, *GFP*, *Tubulin* amounts. The relative *DLK1* amounts were then divided by either the corresponding relative *GFP* or *Tubulin* amounts, yielding "corrected" *DLK1* amounts. We performed more than four independent transfections of cells for each mimic miRNA, and ran more than two independent Western blot experiments per transfection. MiRNA effect on the *DLK1* expression was estimated by comparing the mean of the corrected *DLK1* amounts for a given miRNA either to the global mean (not including siRNA data) or to the average of NC1 and NC2 data.

#### Deglycosylation

As *DLK1* has been reported to be *N*- and *O*-glycosylated [30], we carried out Western blot analysis using proteins treated with the Protein Deglycosylation mix (New England Biolabs, Ipswich, MA) according to the manufacturer's instructions. Briefly, COS1 cells transfected with the p3.1M-*DLK1*-HA vector were harvested in the Phosphate Buffered Saline (GIBCO) supplied with 1% Igepal CA-630 and the complete protease inhibitor cocktail. Twenty  $\mu$ g of protein were denatured at 99°C for 10 min and treated at 37°C for 4 hrs with a mixture of deglycosylation enzymes that were expected to remove all *N*-linked and simple *O*-linked glycans, as well as some complex *O*-linked glycans. Western blot was performed as described above.

#### Northern blot analysis

Total RNA was isolated from COS1 cells 24 hrs after transfection with the p3.1M-*DLK1*-HA vector using the Trizol reagent (Invitrogen) according to the manufacturer's protocol. Ten  $\mu$ g of total RNA was denatured at 50°C for 10 min in 20  $\mu$ l of 1  $\times$  MOPS buffer (20 mM 3-(*N*-morpholino) propanesulfonic acid, 5 mM sodium acetate, 1 mM EDTA, 1 mM EGTA, pH 7.0) supplied with 2.4 M formaldehyde and 50% formamide. The RNA was mixed with loading buffer (final 5% glycerol, 0.025% bromophenol blue, 0.025% xylene cyanol) and subjected to electrophoresis on a 1% agarose gel containing 1.75 M formaldehyde in 1  $\times$  MOPS buffer at 5 V/cm for 3.5 hrs. After electrophoresis, the RNA was transferred onto a Hybond-N<sup>+</sup> nylon membrane (GE Healthcare) with 10  $\times$  SSC buffer (150 mM sodium citrate, 1.5 M NaCl, pH 7.0) and UV cross-linked essentially as described in Sambrook *et al.* [31]. A DNA fragment containing the ovine *DLK1* ORF region (857-bp) was gel-purified after digesting the plasmid p3.1M-*DLK1*-HA with *Nco*I and *Bgl*II and labeled with [ $\alpha$ -<sup>32</sup>P] dCTP (GE Healthcare) using the Prime-It II random primer labeling kit (Stratagene). The membrane was pre-hybridized with the



ULTRAhyb buffer (Ambion) at 42°C for 2 hrs and then hybridized with  $1 \times 10^6$  cpm/ml of the  $^{32}\text{P}$ -labeled probe at 45°C overnight. Membranes were washed twice at 55°C for 20 min in  $2 \times \text{SSC}$  and 0.1% SDS, then twice at 55°C for 30 min in  $0.1 \times \text{SSC}$  and 0.1% SDS. Membranes were exposed to the Hyperfilm ECL film (GE Healthcare) for 3 hrs.

#### Generation of ovine *GTL2* expression vector

Ovine *GTL2* sequence (see Additional file 1: Text S2) was PCR-amplified from cDNA synthesized with random hexamers from *longissimus dorsi* skeletal muscle RNA of an 8-week-old *CLPG/CLPG* animal using the Phusion DNA polymerase with primers, ovGTL2-FL-S1 and ovGTL2-FL-A1 (see Additional file 2: Table S3). The resultant PCR product was sub-cloned into the pCRII-blunt-TOPO vector (Invitrogen) and subjected to DNA sequencing for confirmation. The insert was excised with *EcoRI* and ligated into the corresponding site of the pcDNA3.1(-) vector to produce the p3.1-*GTL2* and p3.1-*antiGTL2* vectors that express ovine *GTL2* in sense and antisense orientations, respectively. Integrity of the insert was confirmed by sequencing.

#### In silico affinity score of miRNA to *DLK1*

Affinity scores of each miRNA for ovine *DLK1* transcript expressed from the p3.1M-*DLK1*-HA were computed using Miranda [16] and a seed-based score [15]. Miranda scores were obtained by running the Miranda v3.3a software using the miRNA sequences (see Additional file 2: Table S1) and the ovine *DLK1* 5' UTR, ORF, 3' UTR, and full-length sequences (see Additional file 1: Text S1). For the Grimson seed match score, we simply counted the number of sites complementary to miRNA seed sequences (8mer, 7mer-A1, 7mer-m8, 6mer, and 6mer-offset seed matches [15]) on the *DLK1* sequences. Pearson correlation coefficients between the prediction scores and the corrected *DLK1* amounts (*DLK1*/GFP) (without controls) and its significant levels were calculated using standard procedures.

#### Additional files

**Additional file 1: Figure S1.** Working model for polar overdominance at the ovine callipyge locus [11]. **Figure S2:** Characterization of the 5' and 3' ends of ovine *DLK1* transcripts in ovine skeletal muscle. **Figure S3:** Construction and characterization of the p3.1M-*DLK1*-HA vector expressing full length ovine *DLK1* [30]. **Figure S4:** Quantitativeness of Western blot analysis of ovine *DLK1* protein. **Figure S5:** Dual fluorescent Western blot to measure *DLK1* amount. **Figure S6:** Conservation around oar-miR-329a-3p 6-mer seed matches on *DLK1* [15,32]. **Figure S7:** Weak correlation between miRNA-target affinity score and *DLK1* [15,16]. **Figure S8:** MiRNAs used for a multiple-miRNA transfection test. **Figure S9:** Effect of *GTL2* lncRNA expression on *DLK1* amount. **Figure S10:** Functionality of synthetic mimic miRNAs [17]. **Text S1:** RNA sequence transcribed from

the p3.1M-*DLK1*-HA expression vector. **Text S2:** Ovine *GTL2* sequence in the p3.1-*GTL2* expression vector.

**Additional file 2: Table S1.** Mimic miRNA sequence information [10,33]. **Table S2:** Effect of each mimic miRNA on *DLK1* expression and its correlation with predicted affinity scores [15,16]. **Table S3:** Oligonucleotides used in this study.

#### Abbreviations

CLPG: Callipyge; *DLK1*: Delta-like 1 homolog (Drosophila); *PEG11*: Paternally expressed gene 11; *RTL1*: Retrotransposon-like 1; *GTL2*: Gene trap locus 2; *RIAN*: RNA imprinted and accumulated in nucleus; *MIRG*: MicroRNA containing gene; miRNA: microRNA; ncRNA: non-coding RNA; lncRNA: long non-coding RNA; snoRNA: small nucleolar RNA; dsRNA: double stranded RNA; ORF: Open reading frame; UTR: Untranslated region; PRC2: Polycomb repressive complex 2; RACE: Rapid amplification of cDNA ends; HA: Haemagglutinin; RISC: RNA-induced silencing complex; moR: miRNA-offset RNA.

#### Competing interests

The authors declare that they have no competing interests.

#### Authors' contributions

HC, XX, CC, MG and HT contributed to the conception and design of the study, and analysis and interpretation of data. TH and NC provided sheep samples. HC performed experiments. HC, MG, and HT drafted the manuscript. CC, TH and NC helped to draft the manuscript. All authors read and approved the final manuscript.

#### Acknowledgments

We would like to thank Dr. Zissimos Mourelatos (University of Pennsylvania) and Dr. Yukihide Tomari (University of Tokyo) for advice in mimic miRNA design, and Ms Xin Zhang, Dr. Ming Fang and Dr. Kateryna Shostak (University of Liège) for their kind help to HC. We also thank the GIGA sequencing facility (University of Liège) for their support. This work was funded by the FNRS (project 2.4544.11), by the Communauté Française de Belgique (ARC Mirage), by China state-sponsored post-graduate study abroad program (to HC), and by BELSPO (postdoctoral fellowship to XX).

#### Author details

<sup>1</sup>Unit of Animal Genomics, GIGA-R & Faculty of Veterinary Medicine, University of Liège (B34), 1 Avenue de l'Hôpital, 4000 Liège, Belgium. <sup>2</sup>Key Lab of Agricultural Animal Genetics, Breeding and Reproduction of Ministry of Education, College of Animal Science & Technology, Huazhong Agricultural University, Wuhan 430070, P. R. China. <sup>3</sup>Department of Animal, Dairy and Veterinary Sciences, Utah State University, Logan, UT 84322, USA.

Received: 15 June 2014 Accepted: 16 October 2014

Published: 30 October 2014

#### References

- Cockett NE, Jackson SP, Shay TL, Farnir F, Berghmans S, Snowder GD, Nielsen DM, Georges M: **Polar overdominance at the ovine callipyge locus.** *Science* 1996, **273**:236–238.
- Lawson HA, Cheverud JM, Wolf JB: **Genomic imprinting and parent-of-origin effects on complex traits.** *Nat Rev Genet* 2013, **14**:609–617.
- Charlier C, Segers K, Karim L, Shay T, Gyapay G, Cockett N, Georges M: **The callipyge mutation enhances the expression of coregulated imprinted genes in cis without affecting their imprinting status.** *Nat Genet* 2001, **27**:367–369.
- Freking BA, Murphy SK, Wylie AA, Rhodes SJ, Keele JW, Leymaster KA, Jirtle RL, Smith TP: **Identification of the single base change causing the callipyge muscle hypertrophy phenotype, the only known example of polar overdominance in mammals.** *Genome Res* 2002, **12**:1496–1506.
- Davis E, Jensen CH, Schroder HD, Farnir F, Shay-Hadfield T, Kliem A, Cockett N, Georges M, Charlier C: **Ectopic expression of *DLK1* protein in skeletal muscle of padumal heterozygotes causes the callipyge phenotype.** *Curr Biol* 2004, **14**:1858–1862.
- Byrne K, Colgrave ML, Vuocolo T, Pearson R, Bidwell CA, Cockett NE, Lynn DJ, Fleming-Waddell JN, Tellam RL: **The imprinted retrotransposon-like**



- gene PEG11 (RTL1) is expressed as a full-length protein in skeletal muscle from Callipyge sheep. *PLoS One* 2010, **5**:e8638.
7. Georges M, Charlier C, Cockett N: **The callipyge locus: evidence for the trans interaction of reciprocally imprinted genes.** *Trends Genet* 2003, **19**:248–252.
  8. Charlier C, Segers K, Wagenaar D, Karim L, Berghmans S, Jaillon O, Shay T, Weissenbach J, Cockett N, Gyapay G, Georges M: **Human-ovine comparative sequencing of a 250-kb imprinted domain encompassing the callipyge (clpg) locus and identification of six imprinted transcripts: DLK1, DAT, GTL2, PEG11, antiPEG11, and MEG8.** *Genome Res* 2001, **11**:850–862.
  9. Edwards CA, Mungall AJ, Matthews L, Ryder E, Gray DJ, Pask AJ, Shaw G, Graves JA, Rogers J, Savoir consortium, Dunham I, Renfree MB, Ferguson-Smith AC: **The evolution of the DLK1-DIO3 imprinted domain in mammals.** *PLoS Biol* 2008, **6**:e135.
  10. Caiment F, Charlier C, Hadfield T, Cockett N, Georges M, Baurain D: **Assessing the effect of the CLPG mutation on the microRNA catalog of skeletal muscle using high-throughput sequencing.** *Genome Res* 2010, **20**:1651–1662.
  11. Davis E, Caiment F, Tordoir X, Cavaille J, Ferguson-Smith A, Cockett N, Georges M, Charlier C: **RNAi-mediated allelic trans-interaction at the imprinted Rtl1/Peg11 locus.** *Curr Biol* 2005, **15**:743–749.
  12. Murphy SK, Freking BA, Smith TP, Leymaster K, Nolan CM, Wylie AA, Evans HK, Jirtle RL: **Abnormal postnatal maintenance of elevated DLK1 transcript levels in callipyge sheep.** *Mamm Genome* 2005, **16**:171–183.
  13. White JD, Vuocolo T, McDonagh M, Grounds MD, Harper GS, Cockett NE, Tellam R: **Analysis of the callipyge phenotype through skeletal muscle development; association of Dlk1 with muscle precursor cells.** *Differentiation* 2008, **76**:283–298.
  14. Vuocolo T, Cockett NE, Tellam RL: **Expression of imprinted genes surrounding the callipyge mutation in ovine skeletal muscle.** *Aust J Exp Agric* 2005, **45**:879–892.
  15. Grimson A, Farh KK, Johnston WK, Garrett-Engle P, Lim LP, Bartel DP: **MicroRNA targeting specificity in mammals: determinants beyond seed pairing.** *Mol Cell* 2007, **27**:91–105.
  16. John B, Enright AJ, Aravin A, Tuschl T, Sander C, Marks DS: **Human MicroRNA targets.** *PLoS Biol* 2004, **2**:e363.
  17. Takeda H, Charlier C, Farnir F, Georges M: **Demonstrating polymorphic miRNA-mediated gene regulation in vivo: application to the g + 6223G -> A mutation of Texel sheep.** *RNA* 2010, **16**:1854–1863.
  18. Bagga S, Bracht J, Hunter S, Massier K, Holtz J, Eachus R, Pasquinelli AE: **Regulation by let-7 and lin-4 miRNAs results in target mRNA degradation.** *Cell* 2005, **122**:553–563.
  19. Guo H, Ingolia NT, Weissman JS, Bartel DP: **Mammalian microRNAs predominantly act to decrease target mRNA levels.** *Nature* 2010, **466**:835–840.
  20. Baek D, Villen J, Shin C, Camargo FD, Gygi SP, Bartel DP: **The impact of microRNAs on protein output.** *Nature* 2008, **455**:64–71.
  21. Selbach M, Schwanhauser B, Thierfelder N, Fang Z, Khanin R, Rajewsky N: **Widespread changes in protein synthesis induced by microRNAs.** *Nature* 2008, **455**:58–63.
  22. Zhao J, Ohsumi TK, Kung JT, Ogawa Y, Grau DJ, Sarma K, Song JJ, Kingston RE, Borowsky M, Lee JT: **Genome-wide identification of polycomb-associated RNAs by RIP-seq.** *Mol Cell* 2010, **40**:939–953.
  23. Bidwell CA, Waddell JN, Taxis TM, Yu H, Tellam RL, Neary MK, Cockett NE: **New insights into polar overdominance in callipyge sheep.** *Anim Genet* 2014, **45**(Suppl 1):51–61.
  24. Ingolia NT, Ghaemmaghami S, Newman JR, Weissman JS: **Genome-wide analysis in vivo of translation with nucleotide resolution using ribosome profiling.** *Science* 2009, **324**(5924):218–223.
  25. Chiang HR, Schoenfeld LW, Ruby JG, Auyeung VC, Spies N, Baek D, Johnston WK, Russ C, Luo S, Babiarz JE, Blleloch R, Schroth GP, Nusbaum C, Bartel DP: **Mammalian microRNAs: experimental evaluation of novel and previously annotated genes.** *Genes Dev* 2010, **24**:992–1009.
  26. Berezhikov E, Robine N, Samsonova A, Westholm JO, Naqvi A, Hung JH, Okamura K, Dai Q, Bortolamiol-Becet D, Martin R, Zhao Y, Zamore PD, Hannon GJ, Marra MA, Weng Z, Perimon N, Lai EC: **Deep annotation of Drosophila melanogaster microRNAs yields insights into their processing, modification, and emergence.** *Genome Res* 2011, **21**(2):203–215.
  27. Griffiths-Jones S: **The microRNA Registry.** *Nucleic Acids Res* 2004, **32**:D109–D111.
  28. TargetScan custom [http://www.targetscan.org/vert\_50/seedmatch.html]
  29. Lewis BP, Burge CB, Bartel DP: **Conserved seed pairing, often flanked by adenosines, indicates that thousands of human genes are microRNA targets.** *Cell* 2005, **120**:15–20.
  30. PhosphoSitePlus (DLK1) [http://www.phosphosite.org/proteinAction.do?id=21757&showAllSites=true]
  31. Sambrook J, Fritsch EF, Maniatis T: *Molecular Cloning: A Laboratory Manual*. 1989.
  32. Blanchette M, Kent WJ, Riemer C, Elnitski L, Smit AF, Roskin KM, Baertsch R, Rosenbloom K, Clawson H, Green ED, Haussler D, Miller W: **Aligning multiple genomic sequences with the threaded blockset aligner.** *Genome Res* 2004, **14**:708–715.
  33. Shi W, Hendrix D, Levine M, Haley B: **A distinct class of small RNAs arises from pre-miRNA-proximal regions in a simple chordate.** *Nat Struct Mol Biol* 2009, **16**:183–189.

doi:10.1186/1471-2164-15-944

**Cite this article as:** Cheng et al.: Experimental evaluation does not reveal a direct effect of microRNA from the callipyge locus on DLK1 expression. *BMC Genomics* 2014 **15**:944.

**Submit your next manuscript to BioMed Central and take full advantage of:**

- Convenient online submission
- Thorough peer review
- No space constraints or color figure charges
- Immediate publication on acceptance
- Inclusion in PubMed, CAS, Scopus and Google Scholar
- Research which is freely available for redistribution

Submit your manuscript at  
www.biomedcentral.com/submit

