

CASE REPORT

Open Access

Plasmapheresis in a patient with antiphospholipid syndrome before living-donor kidney transplantation: a case report

Tadashi Sofue^{1*}, Yushi Hayashida², Taiga Hara¹, Kazuyo Kawakami¹, Nobufumi Ueda², Yoshio Kushida³, Masashi Inui⁴, Hiroaki Dobashi⁵, Yoshiyuki Kakehi² and Masakazu Kohno¹

Abstract

Background: Early graft thrombosis and bleeding complications remain important causes of early graft loss following kidney transplantation in patients with antiphospholipid syndrome. Anti- β 2-glycoprotein I IgG is a disease-specific antibody in patients with antiphospholipid syndrome. Although plasmapheresis is partially effective for antibody removal, the optimal treatment allowing successful transplantation in patients with antiphospholipid syndrome has not been established. This is the first report of a patient with antiphospholipid syndrome who successfully underwent living-donor kidney transplantation following prophylactic plasmapheresis for removal of anti- β 2-glycoprotein I IgG.

Case presentation: A 37-year-old Japanese female was scheduled to undergo a living-donor kidney transplant from her mother. At age 25 years, she experienced renal vein thrombosis, was diagnosed with antiphospholipid syndrome secondary to systemic lupus erythematosus, and was subsequently treated with prednisolone and warfarin. At age 37 years, she was diagnosed with end stage kidney disease, requiring maintenance hemodialysis because of recurrent renal vein thrombosis despite taking anticoagulation therapy. The pretreatment protocol consisted of prophylactic plasmapheresis plus full anticoagulation therapy to counteract the risks of early graft thrombosis. Anticardiolipin and anti- β 2-glycoprotein I IgGs were successfully removed by both double filtration plasmapheresis and plasma exchange. The allograft kidney began to function soon after transplantation. No obvious thrombotic complications were observed after transplantation, although anti- β 2-glycoprotein I IgG increased to the level observed before plasmapheresis. One year after transplantation, the patient's kidney function remains stable while receiving anticoagulation therapy as well as a maintenance immunosuppressive regimen.

Conclusion: Prophylactic plasmapheresis plus full anticoagulation therapy may be an effective strategy in patients with antiphospholipid syndrome undergoing living-donor kidney transplantation.

Keywords: Antiphospholipid syndrome, Living-donor kidney transplantation, Plasmapheresis, Anti- β 2-glycoprotein I IgG

Background

Early graft thrombosis and bleeding complications remain important causes of early graft loss following kidney transplantation in patients with antiphospholipid syndrome (APS) [1-4]. APS is a multisystem autoimmune disorder characterized clinically by recurrent arterial and/or venous thrombosis and/or pregnancy morbidity, and serologically

by the presence of antiphospholipid antibodies (aPL), including lupus anticoagulant (LA), anticardiolipin (aCL) and anti- β 2-glycoprotein I (anti- β 2GPI) antibodies. APS can be classified as primary or secondary to systemic lupus erythematosus (SLE). aCL antibody has been regarded as a major antiphospholipid antibody and a marker for APS. In contrast, anti- β 2GPI antibody is a relatively new disease-specific antibody for APS and considered a cause of thrombotic complications [5,6].

The "two hit" model of thrombosis in APS patients states that an initiating "first hit" injury disrupts the

* Correspondence: sofue@med.kagawa-u.ac.jp

¹Division of Nephrology and Dialysis, Department of CardioRenal and Cerebrovascular Medicine, Faculty of Medicine, Kagawa University, 1750-1 Ikenobe, Miki-cho, Kita-gun, Kagawa 761-0793, Japan

Full list of author information is available at the end of the article

endothelium, and that aPL potentiates thrombus formation as a “second hit” [7]. The “first hit” injury to the endothelium can include trauma, surgery, infection and drugs [8,9], making surgical procedures an important risk factor for thrombosis in patients with APS.

Anticoagulation therapy with warfarin is recommended in patients with APS to prevent recurrent arterial and/or venous thrombosis [10,11]. Anticoagulation therapy before and at the time of kidney transplantation has been reported to reduce the risk of early posttransplant thrombosis in the allograft [2]. However, anticoagulation therapy increases the risk of bleeding complications, which may lead to early allograft loss [3]. Moreover, patients with APS are at high risk of allograft thrombosis even when taking anticoagulation therapy [3].

Prophylactic temporary plasmapheresis for antibody removal has been reported effective in patients with APS and acute thrombotic complications [12,13]. Plasmapheresis has been found to reduce serum titers of aCL and anti- β 2GPI IgGs [12,14]. Although anticoagulation therapy with heparin is recommended for pregnant women with APS [15], prophylactic plasmapheresis has been reported partially effective in these women [16,17]. To our knowledge, prophylactic plasmapheresis has been reported useful in only one patient with primary APS undergoing kidney transplantation [4]. Therefore, the optimal treatment strategy allowing successful kidney transplantation in patients with APS has not yet been established. This report describes a patient with secondary APS, who underwent prophylaxis with plasmapheresis, in addition to full anticoagulation therapy, prior to successful living-donor kidney transplantation.

Case presentation

A 37-year-old Japanese woman, scheduled to undergo a living-donor, ABO-compatible kidney transplant from her mother, was referred to our kidney transplant center in July 2012. At age 25 years, she had experienced acute kidney injury (AKI) due to bilateral renal vein thrombosis. At that time, she was diagnosed with APS secondary to SLE because of the repeated detection of high titers of antibody to double-stranded DNA (300 U/ml) and aCL IgG (39.6 U/ml) and low serum complement 3 (C3; 34 mg/dl) and complement 4 (C4; 2 mg/dl) concentrations. Following the diagnosis of AKI, she underwent hemodialysis (HD) for 2 weeks. Plasma exchange (PE), methylprednisolone pulse therapy and anticoagulation therapy ameliorated her AKI, and she no longer needed HD. She subsequently received immunosuppressive therapy with 5 mg prednisolone and anti-coagulant therapy with warfarin, to maintain an international normalized ratio (INR) between 2.0 and 3.0. During this time, her serum creatinine concentration remained stable (1.2 to 1.4 mg/dl; 103 to 120 μ mol/L). However, at age 36 years,

she experienced recurrent bilateral renal vein thrombosis and was again diagnosed with AKI. At the time of recurrent thrombosis, her INR was 1.5, which was lower than the target therapeutic range, despite receiving a sufficient amount of warfarin (3.0 mg/day). At the time of recurrence, her LA was positive (ratio 1.3; normal range <1.3), as determined by the Gradipore-LA Dilute Russell's viper venom time (dRVVT) test (Medical & Biological Laboratories Co., Ltd., Nagoya, Japan). The combination of immunosuppressive and anticoagulant therapy could not restore her kidney function. At age 37 years, she was diagnosed with end stage kidney disease, requiring maintenance HD. Because of thrombosis, three consecutive operations for arteriovenous fistula failed. Finally, an arteriovenous graft was created as vascular access for HD. All tests performed to investigate the causes of thrombophilia were within normal ranges, except for aPL assays. SLE activity was considered low because her serum C3 (91 mg/dl) and C4 (23 mg/dl) concentrations were normal, and there was no evidence of antibody to double-stranded DNA (<5.0 IU/ml). Her pre-treatment aCL and anti- β 2GPI IgG concentrations were 42.6 U/ml (normal range <10 U/ml) and 13.9 U/ml (normal range <3.5 U/ml), respectively. Plasma aCL IgG (MESACUP cardiolipin test, Medical & Biological Laboratories Co., Ltd) and anti- β 2GPI IgG (anti-CL- β 2GPI EIA kit, Yamasa Co., Choshi, Japan) were measured by enzyme-linked immunosorbent assays. The dRVVT test before kidney transplantation was positive (ratio 1.3). Her 63-year-old mother had sufficient eGFR (109 ml/min/1.73 m²) and two human leukocyte antigen (HLA) mismatches with the recipient. Tests for histocompatibility, including complement-dependent cytotoxicity (CDC) crossmatch, flow crossmatch and flow cytometry panel-reactive antibody (PRA) tests, showed that the donor and recipient were histocompatible.

Kidney transplantation was planned for February 2013. The pretreatment protocol consisted of prophylactic plasmapheresis plus full anticoagulation therapy to counteract the risks of early graft thrombosis and bleeding. Double filtration plasmapheresis (DFPP) was performed using a KM-8900EX (Kuraray Medical, Tokyo, Japan) machine with a Plasmacure PE-05 plasma separator (Kuraray Medical) and Evaflux 2A20 plasma fractionator (Kawasumi Laboratories, Tokyo, Japan). During DFPP, 2500 ml of blood was treated, with replacement by 450 ml of 11.25% albumin solution. PE was performed using a KM-8900EX machine with a Plasmacure PE-05 plasma separator, with replacement by 2700 ml of fresh frozen plasma (FFP).

The clinical course and treatment of the patient are shown in Figure 1. The induction immunosuppressive regimen consisted of combination therapy with prolonged-release tacrolimus, mycophenolate mofetil (MMF), methylprednisolone and basiliximab. MMF (1000 mg/day), was

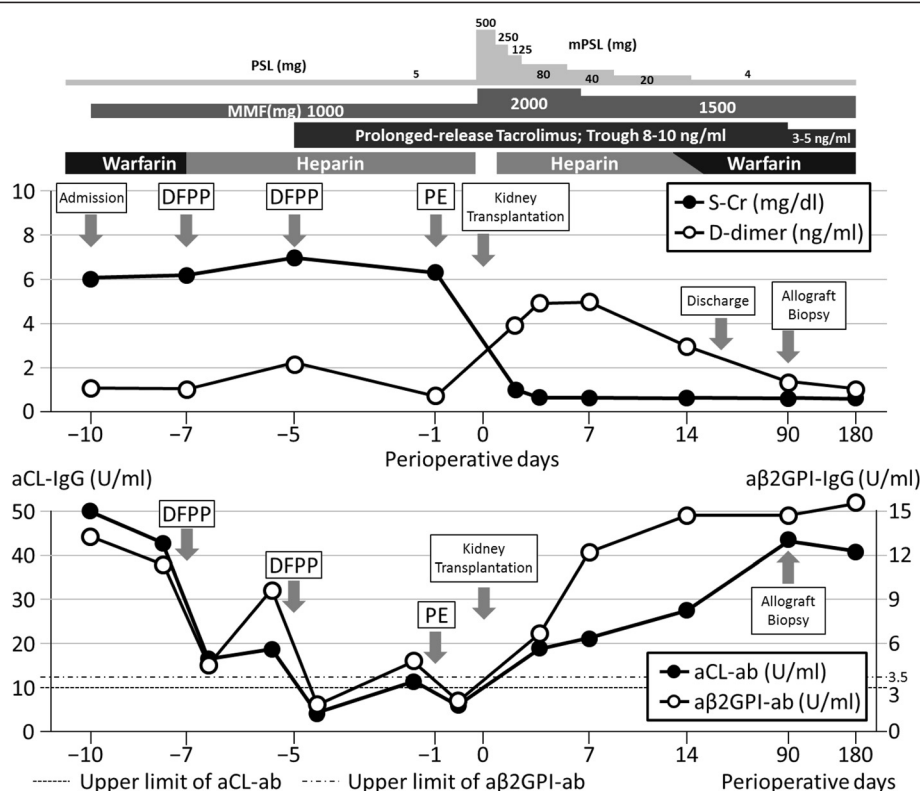


Figure 1 Clinical course and treatment of the patient. Abbreviations: PSL, prednisolone; mPSL, methylprednisolone; MMF, mycophenolate mofetil; S-Cr, serum creatinine; DFPP, double filtration plasmapheresis; PE, plasma exchange; aCL, anticardiolipin; IgG, immunoglobulin G; aβ2GPI, anti-β2 glycoprotein I.

started 10 days before kidney transplantation. Anticoagulation therapy with 2.5 mg/day warfarin was replaced by daily continuous injections of heparin (10,000 units/day), starting 7 days before transplantation, with the dose of heparin adjusted to maintain an activated partial thromboplastin time (APTT) of 40 to 60, with heparin suspended 3 hours before surgery. DFPP was performed on days -6 and -4 and PE on day -1. aCL and anti-β2GPI IgGs were successfully removed by both DFPP and PE, with both being within normal range on day -1 (3.8 IU/ml and 1.9 U/ml, respectively). No apparent adverse effects were observed during plasmapheresis.

The right kidney of the donor was transplanted into the right iliac fossa of the recipient. Intraoperative bleeding was 582 ml and the amount of transfused red cell concentrates was 560 ml. Post-operative hemoglobin was 9.4 g/dl. Allograft kidney function rapidly appeared after kidney transplantation. Anti-coagulation therapy with heparin (10,000 units/day) was restarted on the morning of day +1 and replaced by warfarin on day +14. After transplantation, aCL and anti-β2GPI IgGs increased to their levels before plasmapheresis. However, no obvious thrombotic complications, including increased serum d-dimer levels, were observed after transplantation. The patient was discharged 21 days after transplantation, receiving

maintenance anti-coagulation therapy with warfarin (3 mg/day) and a maintenance immunosuppressive regimen, consisting of prolonged-release tacrolimus (6 mg/day), MMF (1500 mg/day) and methylprednisolone (4 mg/day).

Three months after kidney transplantation, her serum creatinine level was stable (0.69 mg/dl; 59.5 μmol/L) without apparent proteinuria, and her titer of anti-β2GPI IgG was high (17.8 U/ml). Pathological findings of a protocol allograft biopsy taken 3 months after kidney transplantation are shown in Figure 2. There was no evidence of arteriole thrombosis or lupus nephritis. Her Banff score was t1 i1 g0 v0 ci0 ct1 mm0 cv0 ah0 ptc0; and immunofluorescence findings were negative. Borderline changes were diagnosed.

At the present time, one year after transplantation, her serum creatinine concentration remains stable (0.67 mg/dl; 57.8 μmol/L), although she has a high anti-β2GPI IgG titer (31.9 U/ml) and is positive on the dRVVT test (ratio 1.3). She has not experienced any bleeding or thrombotic complications while remaining on anticoagulant therapy with warfarin to maintain an INR between 2.0 and 3.0.

Discussion

We have shown here that prophylaxis with plasmapheresis and full anticoagulation therapy was an effective

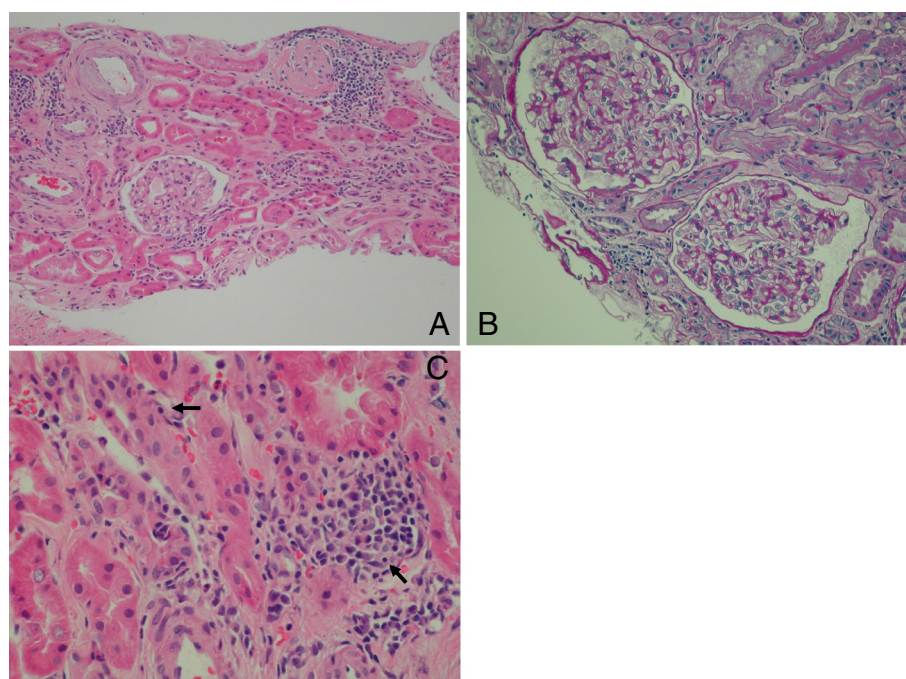


Figure 2 Renal histopathological findings showing the absence of (A) arteriole thrombosis (hematoxylin and eosin staining, low power field) and (B) lupus nephritis (periodic acid-Schiff staining, high power field), but (C) slight lymphocyte infiltration into tubules (Banff score, t1) (hematoxylin and eosin staining, high power field).

strategy in a patient with secondary APS who underwent living-donor kidney transplantation. These treatments are important because once the thrombotic process is initiated, there is no effective therapy available to lyse the clot and to recover the allograft [3].

Prophylactic plasmapheresis could reduce both aCL and anti- β 2GPI IgGs to their normal ranges. Although we found that DFFP removed 70% of both aCL and anti- β 2GPI IgGs, a previous report found that DFPP with Evaflux 2A20 removed around 20% of total IgG [18]. We also found that PE removed 56% of both aCL and anti- β 2GPI IgGs, whereas product information for Plasmacure PE-05 stated that PE removed 96% of total IgG [19]. Treatment with PE has been reported to reduce anti-HLA antibodies while not affecting tetanus IgG in kidney transplant recipients [20]. As replacement with FFP should be effective in maintaining permanent immunity, we considered that our method of plasmapheresis could remove disease-specific IgG while leaving permanent immunity intact. Unfortunately, however, we could not determine whether plasmapheresis affected the results of dRVVT tests. A case report showed that treatment with plasmapheresis decreased dRVVT test results [21]. Thus, IgG removal by plasmapheresis would remove LA as well as other aPLs.

We used prophylactic temporary plasmapheresis in this patient only to prevent perioperative thrombotic complications. Endothelial injuries can result from the

surgical procedures used during kidney transplantation, including perfusion with organ preservation solution and ischemia/reperfusion injury, although these injuries are considered temporary. Therefore, temporary prophylactic aPL removal may have reduced the risk of thrombosis during the early post-operative period. Moreover, perioperative bleeding complications may be prevented by discontinuing anticoagulant therapy. That is, removal by plasmapheresis of a sufficient amount of anti- β 2GPI IgG could allow anticoagulant therapy to be safely discontinued for 24 hours perioperatively. Although the maintenance immunosuppressive regimen could not reduce anti- β 2GPI IgG after kidney transplantation, continuous plasmapheresis to remove increased anti- β 2GPI IgG was not recommended. An international consensus statement has suggested that plasmapheresis be used only at the time of thrombotic complications [10]. Sufficient anticoagulation therapy during the maintenance phase after kidney transplantation is considered effective in preventing thrombotic complications in patients with APS.

A recent non-randomized pilot study showed that rituximab, a chimeric monoclonal antibody against CD20, may play a role in the treatment of patients with refractory catastrophic APS [22]. In Japan, rituximab is frequently used as an induction immunosuppressant for ABO-incompatible kidney transplantation [23]. However, treatment with rituximab was unable to change aPL profiles [24]. Moreover, two randomized clinical trials with

rituximab (the EXPLORER and LUNAR studies), which did not show rituximab efficacy in patients with SLE, did not include patients with APS [25,26]. Because we considered the efficacy and safety of rituximab in patients with APS secondary to SLE not established, we did not treat our patient with rituximab prophylaxis.

The long-term prognosis of patients with APS after kidney transplantation has been reported to be poor [27]. Although these patients did not develop major thrombotic complications, the presence of aCL IgG was associated with poor transplantation outcomes [27]. Recently, anti- β 2GPI IgG was reported to initiate arteriosclerotic changes [6]. Long-term monitoring of cardiovascular disease and kidney function is necessary for these patients.

Conclusions

We describe here the successful living-donor kidney transplantation in a patient with secondary APS following a combination of prophylactic plasmapheresis and anticoagulation therapy. Although it is impossible to conclude that plasmapheresis is useful as prophylaxis for thrombosis in patients with APS undergoing kidney transplantation based on the findings in a single patient, our results suggest that further studies are warranted.

Consent

Written informed consent was obtained from the patient for publication of this Case report and any accompanying images. A copy of the written consent is available for review by the Editor of this journal.

Abbreviations

aCL: Anticardiolipin; AKI: Acute kidney injury; aPL: Antiphospholipid; APS: Antiphospholipid syndrome; APTT: Activated partial thromboplastin time; β 2GPI: β 2-glycoprotein I; C3: Complement 3; C4: Complement 4; CDC: Complement-dependent cytotoxicity; DFPP: Double filtration plasmapheresis; dRVVT: Dilute Russell's viper venom time; FFP: Fresh frozen plasma; HD: Hemodialysis; HLA: Human leukocyte antigen; INR: International normalized ratio; LA: Lupus anticoagulant; MMF: Mycophenolate mofetil; PE: Plasma exchange; PRA: Panel-reactive antibody; SLE: Systemic lupus erythematosus.

Competing interests

The authors declare that they have no competing interests.

Authors' contributions

TS designed and drafted the manuscript. TS, YH, TH, KK, NU, MI, and HD participated in the interpretation of patient data and in the revision of the final draft. YH and NU were closely involved in patient care. YK made the pathological diagnosis. All authors have read and approved the final manuscript.

Acknowledgements

This work was supported in part by a grant-in-aid for scientific research from the Ministry of Education, Culture, Sports, Science and Technology of Japan (#24791653 to TS) and the fund for Kagawa University Young Scientists 2014 (to TS).

Author details

¹Division of Nephrology and Dialysis, Department of CardioRenal and Cerebrovascular Medicine, Faculty of Medicine, Kagawa University, 1750-1 Ikenobe, Miki-cho, Kita-gun, Kagawa 761-0793, Japan. ²Department of

Urology, Kagawa University, Kagawa, Japan. ³Department of Pathology, Kagawa University, Kagawa, Japan. ⁴Department of Urology, Tokyo Women's Medical University, Yachiyo Medical Center, 477-96 Owada-Shinden, Yachiyo, Chiba 276-8524, Japan. ⁵Division of Endocrinology and Metabolism, Hematology, Rheumatology and Respiratory Medicine, Department of Internal Medicine, Kagawa University, Kagawa, Japan.

Received: 12 May 2014 Accepted: 9 October 2014

Published: 15 October 2014

References

- Knight RJ, Schanzer H, Rand JH, Burrows L: Renal allograft thrombosis associated with the antiphospholipid antibody syndrome. *Transplantation* 1995, **60**:614–615.
- Chew CG, Bannister KM, Mathew TH, Russ G, Seymour A: Thrombotic microangiopathy related to anticardiolipin antibody in a renal allograft. *Nephrol Dial Transplant* 1999, **14**:436–438.
- Vaidya S, Gugliuzza K, Daller JA: Efficacy of anticoagulation therapy in end-stage renal disease patients with antiphospholipid antibody syndrome. *Transplantation* 2004, **77**:1046–1049.
- Ruffatti A, Marson P, Valente M, Ciprian M, Tonello M, Marchini F, Cozzi E, Rigotti P: Plasma exchange in a patient with primary antiphospholipid syndrome undergoing kidney transplantation. *Transpl Int* 2007, **20**:475–477.
- De Laat HB, Derksen RHWM, Urbanus RT, Roest M, De Groot PG: β 2-glycoprotein I-dependent lupus anticoagulant highly correlates with thrombosis in the antiphospholipid syndrome. *Blood* 2004, **104**:3598–3602.
- Willis R, Pierangeli SS: Anti- β 2-glycoprotein I antibodies. *Ann N Y Acad Sci* 2013, **1285**:44–58.
- Giannakopoulos B, Krilis SA: The pathogenesis of the antiphospholipid syndrome. *N Engl J Med* 2013, **368**:1033–1044.
- Sciascia S, Cuadrado MJ, Khamashta M, Roccatello D: Renal involvement in antiphospholipid syndrome. *Nat Rev Nephrol* 2014, **10**:279–289.
- Asherson RA: The catastrophic antiphospholipid syndrome, 1998. A review of the clinical features, possible pathogenesis and treatment. *Lupus* 1998, **7**(Suppl 2):S55–S62.
- Asherson RA, Cervera R, De Groot PG, Erkan D, Boffa MC, Piette JC, Khamashta MA, Shoenfeld Y, Catastrophic Antiphospholipid Syndrome Registry Project Group: Catastrophic antiphospholipid syndrome: international consensus statement on classification criteria and treatment guidelines. *Lupus* 2003, **12**:530–534.
- Lim W, Crowther MA, Eikelboom JW: Management of antiphospholipid antibody syndrome: a systematic review. *JAMA* 2006, **295**:1050–1057.
- Otsubo S, Nitta K, Yumura W, Nihei H, Mori N: Antiphospholipid syndrome treated with prednisolone, cyclophosphamide and double-filtration plasmapheresis. *Intern Med* 2002, **41**:725–729.
- Flamholz R, Tran T, Grad GI, Mauer AM, Olopade OI, Ellman MH, McKinsey JF, Jeon HR, Baron JM, Baron BW: Therapeutic plasma exchange for the acute management of the catastrophic antiphospholipid syndrome: β 2(1)-glycoprotein I antibodies as a marker of response to therapy. *J Clin Apher* 1999, **14**:171–176.
- Neuwelt CM, Daikh DI, Linfoot JA, Pfister DA, Young RG, Webb RL, London SS, Asherson RA: Catastrophic antiphospholipid syndrome: response to repeated plasmapheresis over three years. *Arthritis Rheum* 1997, **40**:1534–1539.
- Di Prima FA, Valenti O, Hyseni E, Giorgio E, Faraci M, Renda E, De Domenico R, Monte S: Antiphospholipid syndrome during pregnancy: the state of the art. *J Prenat Med* 2011, **5**:41–53.
- Frampton G, Cameron JS, Thom M, Jones S, Raftery M: Successful removal of anti-phospholipid antibody during pregnancy using plasma exchange and low-dose prednisolone. *Lancet* 1987, **330**:1023–1024.
- Ruffatti A, Marson P, Pengo V, Favaro M, Tonello M, Bortolati M, Minucci D, De Silvestro G: Plasma exchange in the management of high risk pregnant patients with primary antiphospholipid syndrome. A report of 9 cases and a review of the literature. *Autoimmun Rev* 2007, **6**:196–202.
- Sueoka A: Therapeutic apheresis application using membrane plasma fractionation technology: present scope and limitations. *Ther Apher* 2000, **4**:211–212.
- The Product Information for Plasmacure PE [http://www.kawasumi.jp/english/hp/medical/plas/p_plas.html]
- Everly MJ, Terasaki PI, Hopfield J, Trivedi HL, Kaneku H: Protective immunity remains intact after antibody removal by means of proteasome inhibition. *Transplantation* 2010, **90**:1493–1498.

21. Van Wissen S, Bastiaansen BAJ, Stroobants AK, van den Dool EJ, Idu MM, Levi M, Stroes ESG: **Catastrophic antiphospholipid syndrome mimicking a malignant pancreatic tumour—a case report.** *Lupus* 2008, **17**:586–590.
22. Berman H, Rodriguez-Pinto I, Cervera R, Morel N, Costedoat-Chalumeau N, Erkan D, Shoenfeld Y, Espinosa G, Catastrophic Antiphospholipid Syndrome (CAPS) Registry Project Group (European Forum on Antiphospholipid Antibodies): **Rituximab use in the catastrophic antiphospholipid syndrome: descriptive analysis of the CAPS registry patients receiving rituximab.** *Autoimmun Rev* 2013, **12**:1085–1090.
23. Tanabe K: **Japanese experience of ABO-incompatible living kidney transplantation.** *Transplantation* 2007, **84**:S4–S7.
24. Erkan D, Vega J, Ramon G, Kozora E, Lockshin MD: **A pilot open-label phase II trial of rituximab for non-criteria manifestations of antiphospholipid syndrome.** *Arthritis Rheum* 2013, **65**:464–471.
25. Merrill JT, Neuwelt CM, Wallace DJ, Shanahan JC, Latinis KM, Oates JC, Utset TO, Gordon C, Isenberg DA, Hsieh HJ, Zhang D, Brunetta PG: **Efficacy and safety of rituximab in moderately-to-severely active systemic lupus erythematosus: the randomized, double-blind, phase II/III systemic lupus erythematosus evaluation of rituximab trial.** *Arthritis Rheum* 2010, **62**:222–233.
26. Rovin BH, Furie R, Latinis K, Looney RJ, Fervenza FC, Sanchez-Guerrero J, Maciuga R, Zhang D, Garg JP, Brunetta P, Appel G, LUNAR Investigator Group: **Efficacy and safety of rituximab in patients with active proliferative lupus nephritis: the Lupus Nephritis Assessment with Rituximab study.** *Arthritis Rheum* 2012, **64**:1215–1226.
27. Canaud G, Bienaime F, Noel LH, Royal V, Alyanakian MA, Dautzenberg MD, Rabant M, Posson J, Thervet E, Anglicheau D, Kreis H, Martinez F, Legendre C, Zuber J: **Severe vascular lesions and poor functional outcome in kidney transplant recipients with lupus anticoagulant antibodies.** *Am J Transplant* 2010, **10**:2051–2060.

doi:10.1186/1471-2369-15-167

Cite this article as: Sofue et al.: Plasmapheresis in a patient with antiphospholipid syndrome before living-donor kidney transplantation: a case report. *BMC Nephrology* 2014 **15**:167.

Submit your next manuscript to BioMed Central and take full advantage of:

- Convenient online submission
- Thorough peer review
- No space constraints or color figure charges
- Immediate publication on acceptance
- Inclusion in PubMed, CAS, Scopus and Google Scholar
- Research which is freely available for redistribution

Submit your manuscript at
www.biomedcentral.com/submit

