



RESEARCH

Open Access

Overcoming restriction as a barrier to DNA transformation in *Caldicellulosiruptor* species results in efficient marker replacement

Daehwan Chung^{1,2}, Joel Farkas^{1,2} and Janet Westpheling^{1,2*}

Abstract

Background: Thermophilic microorganisms have special advantages for the conversion of plant biomass to fuels and chemicals. Members of the genus *Caldicellulosiruptor* are the most thermophilic cellulolytic bacteria known. They have the ability to grow on a variety of non-pretreated biomass substrates at or near ~80°C and hold promise for converting biomass to bioproducts in a single step. As for all such relatively uncharacterized organisms with desirable traits, the ability to genetically manipulate them is a prerequisite for making them useful. Metabolic engineering of pathways for product synthesis is relatively simple compared to engineering the ability to utilize non-pretreated biomass.

Results: Here we report the construction of a deletion of *cbel* (Cbes2438), which encodes a restriction endonuclease that is as a major barrier to DNA transformation of *C. bescii*. This is the first example of a targeted chromosomal deletion generated by homologous recombination in this genus and the resulting mutant, JWCB018 (Δ pyrFA Δ cbel), is readily transformed by DNA isolated from *E. coli* without *in vitro* methylation. PCR amplification and sequencing suggested that this deletion left the adjacent methyltransferase (Cbes2437) intact. This was confirmed by the fact that DNA isolated from JWCB018 was protected from digestion by Cbel and HaeIII. Plasmid DNA isolated from *C. hydrothermalis* transformants were readily transformed into *C. bescii*. Digestion analysis of chromosomal DNA isolated from seven *Caldicellulosiruptor* species by using nine different restriction endonucleases was also performed to identify the functional restriction-modification activities in this genus.

Conclusion: Deletion of the *cbel* gene removes a substantial barrier to routine DNA transformation and chromosomal modification of *C. bescii*. This will facilitate the functional analyses of genes as well as metabolic engineering for the production of biofuels and bioproducts from biomass. An analysis of restriction-modification activities in members of this genus suggests a way forward to eliminating restriction as a barrier to DNA transformation and efficient genetic manipulation of this important group of hyperthermophiles.

Keywords: *Caldicellulosiruptor* species, Biomass conversion, Restriction-modification enzymes, Cbel, M.Cbel, Targeted deletion

Background

Biomass recalcitrance represents the greatest obstacle to the efficient conversion of lignocellulosic biomass to commodity chemicals and biofuels [1-3]. For this reason, thermophilic cellulolytic bacteria that are capable of degrading and utilizing plant biomass are of special interest. Members of the *Caldicellulosiruptor* genus are

able to utilize several plant-derived substrates efficiently, including unpretreated switchgrass, and are the most thermophilic of the cellulolytic bacteria (optimum growth temperature near 80°C) [4-6]. These species accomplish plant biomass degradation by producing an arsenal of extracellular carbohydrate degrading enzymes [4,7,8] that include cellulases with multiple catalytic enzyme modules in a single multi-domain enzyme. This is distinct from, but somewhat similar to, membrane-bound cellulosomes exemplified by *Clostridium thermocellum* and other anaerobes [5,8-11].

* Correspondence: janwest@uga.edu

¹Department of Genetics, University of Georgia, Athens, GA 30602, USA

²The BioEnergy Science Center, Oak Ridge National Laboratory, Oak Ridge, TN 37831, USA

Recent growth experiments on crystalline cellulose (Avicel) revealed a significant disparity in plant cell wall deconstruction capability among eight sequenced *Caldicellulosiruptor* species [4]. These distinctive features provide a unique opportunity for the identification of enzymes that facilitate plant biomass decomposition, as well as the basis for a better understanding of the mechanisms of crystalline cellulose degradation.

The development of *Caldicellulosiruptor* species for “consolidated bioprocessing” (CBP) [12] has been limited by the lack of genetic tools required to create stable strains with high yields of desired biofuels and/or bioproducts. Recently, we reported methods for efficient DNA transformation of *C. bescii* and *C. hydrothermalis*, including transformation of a shuttle vector [13] and the ability to direct marker replacement between non-replicating plasmids and chromosomal genes [14]. Restriction by CbeI was shown to be an absolute barrier to DNA transformation [15], but could be overcome by *in vitro* methylation of DNA by a cognate methyltransferase, M.CbeI [14].

Restriction-modification (R-M) systems were initially identified in *Escherichia coli* nearly 6 decades ago [16,17] and are now known to be wide spread in bacteria and archaea. Almost 90% of bacterial genomes contain R-M systems and 43% contain four or more according to “The Restriction Enzyme Database” (REBASE) [18]. R-M systems comprise pairs of distinctive enzymatic activities, a restriction endonuclease and a DNA methyltransferase. R-M systems are classified as type I, type II, type IIS, type III and type IV according to enzyme composition, cofactor requirements, recognition sequence symmetry, location of DNA cleavage relative to the recognition site, and mode of action [19]. They provide the best-characterized defense mechanism in prokaryotes - a “self-nonself discrimination”, against invasion of foreign DNA that includes phages or conjugative plasmids [20,21]. The methyltransferase subunits of R-M systems methylate specific sites in the host DNA (“self”) thus preventing cleavage by the cognate restriction endonuclease. Nonmethylated foreign DNA (“nonself”) is cleaved by the restriction endonuclease [22]. R-M systems also constitute a formidable barrier to efficient DNA transformation for genetic manipulation, especially DNA from other genera, most notably, *E. coli*. Eliminating restriction endonuclease activities in a number of host organisms, including *Bacillus subtilis* [23], *Thermosynechococcus elongates* [24], *Borrelia burgdorferi* [25], and *Clostridium acetobutylicum* [26], improved transformation efficiency and simplified the transformation protocols by removing the time-consuming laborious DNA modification steps.

Here we show that deletion of the gene encoding the CbeI (Cbes2438) restriction endonuclease resulted in a strain that is easily transformable with unmethylated

DNA from *E. coli*, eliminating the need for *in vitro* methylation by M.CbeI (Cbes2437). CbeI is a type II restriction endonuclease that recognizes the sequence 5'-GGCC-3' [15]. We further extend the current study to the analysis of chromosomal DNA modification in other species of *Caldicellulosiruptor*, showing that the pattern of DNA modification is quite diverse across the genus. Both GenBank [27] and REBASE [18] predicted that all 8 sequenced *Caldicellulosiruptor* species [28-33] contain a large number of R-M systems. While the isolation or construction of restriction-deficient strains for all members of this genus is impractical at this time, plasmid DNA from *C. hydrothermalis*, which appears to have a similar R-M system to *C. bescii*, is transformable to *C. bescii* without additional modification. We present a strategy for transformation and genetic manipulation of the other species within the *Caldicellulosiruptor* genus.

Results and discussion

Restriction digestion analysis of chromosomal DNA from *Caldicellulosiruptor* species

We previously reported that the restriction endonuclease, CbeI, presents an absolute barrier to transformation of *C. bescii* [15] with DNA isolated from *E. coli*, and this was successfully overcome by *in vitro* methylation of transforming DNA with M.CbeI, the cognate methyltransferase [14]. The observation that restriction was an absolute barrier to DNA transformation of *C. bescii* prompted us to investigate the prevalence of functional R-M systems in other *Caldicellulosiruptor* species. The finding that the M.CbeI methylated DNA successfully transformed *C. hydrothermalis* [13] suggested that *C. hydrothermalis* and *C. bescii* might share similar R-M activities. A large number of putative R-M systems with significant variation were detected in *Caldicellulosiruptor* species based on REBASE [18] and GenBank [27] analysis. To address the issue of which, if any, of these R-M systems are functional, chromosomal DNA was isolated from 7 *Caldicellulosiruptor* species and digested with each of 9 different restriction endonucleases, all of which have commercially available cognate methyltransferases (Table 1 and Additional file 1: Figure S1). We found that all species tested contain at least 3 types of functional R-M systems (Table 1). DNA isolated from each of the 7 species was resistant to digestion by BamHI and BspEI, indicating the presence of a cognate methyltransferase for these restriction endonucleases is common in this genus. Resistance to digestion by HaeIII was observed for *C. bescii*, *C. hydrothermalis*, *C. kristjansonii*, and *C. saccharolyticus*. Resistance to digestion by MboI was observed for *C. kristjansonii*, *C. saccharolyticus*, *C. obsidiansis*, *C. lactoaceticus*, and *C. kronotskyensis*. HaeIII (5'-GGCC-3')

Table 1 Susceptibility of *Caldicellulosiruptor* species chromosomal DNA to restriction endonuclease digestion

Source	Restriction endonucleases used for digestion								
	AluI	BamHI	BspEI	EcoRI	HaeIII	HhaI	HpaII	MboI	MspI
<i>C. bescii</i> DSM6725	+	-	-	+	-	+	+	+	+
<i>C. hydrothermalis</i> DSM 18901	+	-	-	+	-	+	+	+	+
<i>C. kristjansonii</i> DSM12137	+	-	-	+	-	+	+	-	+
<i>C. saccharolyticus</i> DSM8903	+	-	-	+	-	+	+	-	+
<i>C. obsidiansis</i> ATCC BAA-2073	+	-	-	+	+	+	+	-	+
<i>C. lactoaceticus</i> DSM9545	+	-	-	+	+	+	+	-	+
<i>C. kronotskyensis</i> DSM12137	+	-	-	+	+	+	-	-	-

"+" susceptible to digestion; "-" resistance to digestion.

and MboI (5'-GATC-3') would be expected to act as a formidable barrier for DNA transformation from *E. coli* for these species, since both enzymes are four base cutters and are known to be absolute barriers to DNA transformation in other microorganisms [15,34,35]. *C. kronotskyensis* appears to be the most different from the other species in terms of R-M systems, as it has apparent methyltransferase activity specific to HpaII and MspI recognition sites. All 7 tested species were sensitive to digestion by AluI, EcoRI, and HhaI (Table 1). In this limited test, we observed no differences between *C. bescii* and *C. hydrothermalis* and, in fact, plasmid DNA from *E. coli* methylated *in vitro* with M.CbeI readily transformed both *C. hydrothermalis* and *C. bescii* [13,14]. Both *C. kristjansonii* and *C. saccharolyticus* were very similar to *C. bescii* and *C. hydrothermalis*, differing only by one cognate methyltransferase activity (Table 1). This preliminary analysis with the nine enzymes tested has already provided access to genetic manipulation of *C. hydrothermalis* and while it is possible, if not likely, that other functional R-M systems exist, these data provide insight into extending genetic technologies to other members of this genus.

Construction of a *cbeI* deletion in *C. bescii*

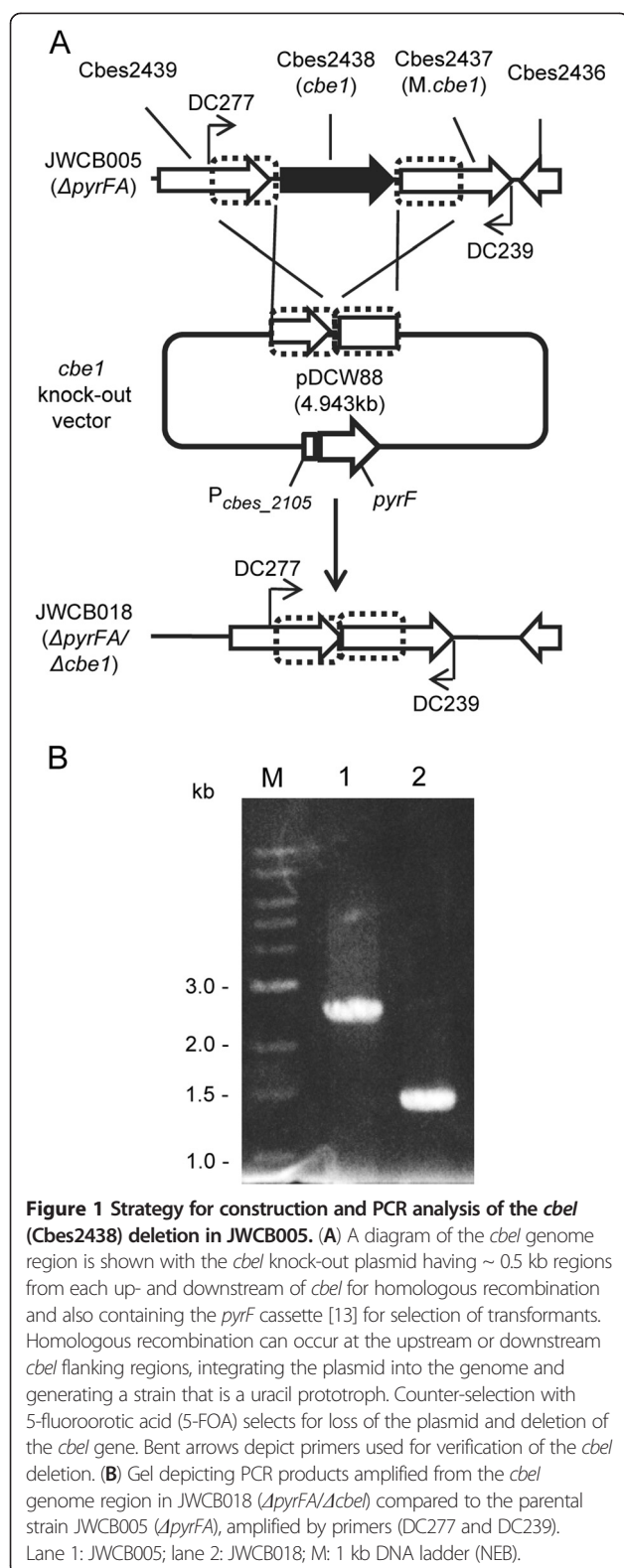
Transformation of DNA from *E. coli* to *C. bescii* required *in vitro* methylation of the DNA with M.CbeI, which was expressed and purified from *E. coli*, requiring a considerable amount of time and effort [14]. More importantly, the degree of methylation *in vitro* had a profound effect on the transformation efficiency introducing an element of variation in the method. CbeI was, therefore, an obvious first target for a chromosomal deletion in *C. bescii*. To test whether a deletion of *cbeI* would alleviate restriction of DNA from *E. coli* in *C. bescii* and allow transformation of unmethylated DNA, we constructed a chromosomal deletion of *cbeI* (Cbes2438) in JWCB005 (Figure 1A, Table 2) [13], using a targeted marker replacement strategy previously described [14]. Strain JWCB005 (Δ pyrFA, *ura*⁻/5-FOA^R) previously shown to be suitable for nutritional

selection and counter-selection for 5-fluoroorotic acid (5-FOA) [13] was used as a host strain. The *cbeI* knock-out vector, pDCW88, contains a 927 bp DNA fragment that includes both the 5' (440 bp) and 3' (487 bp) flanking regions of *cbeI*, and the wild type *pyrF* cassette [13] for uracil prototrophic selection of transformants (Figure 1A, Additional file 1: Figure S2). This non-replicating vector in *C. bescii* was transformed into JWCB005 (Δ pyrFA) with selection for uracil prototrophy followed by counter-selection for 5-fluoroorotic acid (5-FOA) resistance. Initial screening of 18 isolates by PCR revealed merodiploids with a mixture of wild type and *cbeI* deletion genomes. Three of these were further purified on solid medium without 5-FOA and analyzed by PCR amplification of the *cbeI* locus in the chromosome with primers DC277 and DC239 (Figure 1). PCR amplification of this locus from the parent strain JWCB005 (Δ pyrFA) produced the expected wild type ~2.4 kb band, while amplification from JWCB018 produced a ~1.4 kb band indicating a deletion within this region (Figure 1B). The site of the deletion was confirmed by DNA sequence analysis of the PCR product. The resulting strain, JWCB018 (Δ pyrFA Δ cbeI) (Table 2) was used for further analysis.

The *cbeI* gene is located in the chromosome adjacent to the gene encoding M.CbeI, its cognate methyltransferase [14,15]. The two genes are separated by only 45 bases, and are likely to be transcriptionally coupled. The deletion of *cbeI* spanned the entire *cbeI* coding region, but left the potential regulatory region upstream intact, and deleted only 23 bases of the downstream flanking region leaving the entire M.CbeI coding region intact. Chromosomal DNA isolated from JWCB018 was completely protected from cleavage by HaeIII and CbeI *in vitro* (data not shown), suggesting that M.CbeI is still functional in JWCB018. Growth of this mutant was comparable to growth of the parent JWCB005 and the wild type strain.

The JWCB018 is efficiently transformed with unmethylated DNA

To assess the effect of the *cbeI* deletion on transformation of *C. bescii* with unmethylated DNA from *E. coli*,



JWCB005 (Δ *pyrFA*) and JWCB018 (Δ *pyrFA* Δ *cbe1*) were transformed with unmethylated pDCW89 DNA, using a recently developed replicating shuttle vector [13] containing a

wild type copy of the *pyrF* allele for uracil prototrophic selection (Figure 2). No transformants of the parent strain, JWCB005, were detected using unmethylated plasmid DNA isolated from *E. coli* ($<10^{-8}$ transformants per μ g plasmid DNA). The Δ *cbe1* strain, however, was readily transformed with unmethylated pDCW89 DNA isolated from *E. coli* ($\sim 1.0 \times 10^3$ transformants per μ g of plasmid DNA, Figure 2A). Methylated plasmid DNA transformed into the parent strain (JWCB005) at a frequency ($\sim 0.5 \times 10^3$ transformants per mg plasmid DNA) and the difference is likely due to incomplete methylation of the plasmid DNA *in vitro*. Transformation of *C. bescii* was initially confirmed by PCR amplification of the pSC101 *E. coli* replication origin fragment present only in the plasmid (data not shown). Isolation of large quantities of pDCW89 from *C. bescii* for direct analysis proved to be difficult, likely due to low copy number as a result of competition with the endogenous plasmid, pBAS2 [13,37]. Total DNA isolated from JWCB018 transformants was used to “back-transform” *E. coli* and plasmid DNA isolated from these back-transformants was analyzed by restriction digestion (Figure 2B). pDCW89 DNA isolated from the “back transformants” was indistinguishable from the pDCW89 used to transform *C. bescii* and showed no obvious signs of rearrangement or deletion through transformation into JWCB018, replication in *C. bescii* or back-transformation to *E. coli* (Figure 2B).

Plasmid DNA isolated from *C. hydrothermalis* readily transforms strain JWCB005 (Δ *pyrFA*) without *in vitro* methylation

Given the fact that *C. hydrothermalis* and *C. bescii* showed the same observed functional R-M activities (Table 1), we anticipated that DNA isolated from *C. hydrothermalis* would be methylated by its homologue of M.CbeI (Calhy0409) and that plasmid DNA isolated from *C. hydrothermalis* might transform *C. bescii* without *in vitro* methylation. Plasmid DNA was readily isolated from *C. hydrothermalis* transformants (perhaps indicating a high copy number in *C. hydrothermalis* as it is derived from a high copy number *C. bescii* native plasmid [13,37]) and used to transform *C. bescii*. Transformants were obtained at frequencies comparable to M.CbeI methylated plasmid ($\sim 0.5 \times 10^3$ per mg of plasmid DNA). The presence of pDCW89 in transformants was confirmed using PCR amplification of the *aac* (apramycin resistance gene), pSC101 *ori* region, and *pyrF* cassette, contained only on the plasmid. The size of the PCR products obtained in this analysis were as expected and were generated from total DNA isolated from the JWCB005 transformants and plasmid DNA isolated from *E. coli*, but not from JWCB005 (Figure 3). Total DNA, isolated from JWCB005 transformants, was back-transformed to *E. coli* for further analysis.

Table 2 Strains and plasmids used in this study

Strains or plasmid	Strain and genotype/phenotype	Source
<i>Caldicellulosiruptor</i>		
<i>C. bescii</i> DSM6725	Wild type / (ura ⁺ /5-FOA ^S)	DSMZ ¹
<i>C. hydrothermalis</i> DSM18901	Wild type / (ura ⁺ /5-FOA ^S)	DSMZ ¹
<i>C. kristjansonii</i> DSM12137	Wild type / (ura ⁺ /5-FOA ^S)	DSMZ ¹
<i>C. saccharolyticus</i> DSM8903	Wild type / (ura ⁺ /5-FOA ^S)	DSMZ ¹
<i>C. obsidiansis</i> ATCC BAA-2073	Wild type / (ura ⁺ /5-FOA ^S)	DSMZ ¹
<i>C. lactoaceticus</i> DSM9545	Wild type / (ura ⁺ /5-FOA ^S)	DSMZ ¹
<i>C. kronotskyensis</i> DSM12137	Wild type / (ura ⁺ /5-FOA ^S)	DSMZ ¹
JWCB005	<i>C. bescii</i> Δ pyrFA / (ura ⁺ /5-FOA ^R)	[13]
JWCB018	<i>C. bescii</i> Δ pyrFA Δ cbeI / (ura ⁺ /5-FOA ^R)	This study
JWCH003	<i>C. hydrothermalis</i> IScahyl insertion mutation in pyrF gene / (ura ⁺ /5-FOA ^R)	[13,36]
JWCH005	JWCH003 transformed with M.CbeI methylated pDCW89 / (ura ⁺ /5-FOA ^S)	[13]
<i>Escherichia coli</i>		
JW291	DH5a containing pDCW88 (Apramycin ^R)	This study
JW292	DH5a containing pDCW89 (Apramycin ^R)	[13]
Plasmids		
pDCW88	cbeI knock-out vector (Apramycin ^R)	This study
pDCW89	<i>E. coli</i> / <i>Caldicellulosiruptor</i> species shuttle vector (Apramycin ^R)	[13]

¹German collection of microorganisms and cell cultures.

Restriction analysis of plasmid DNA isolated from back-transformants showed that pDCW89 was structurally stable through transformation and replication in *C. bescii* (data not shown).

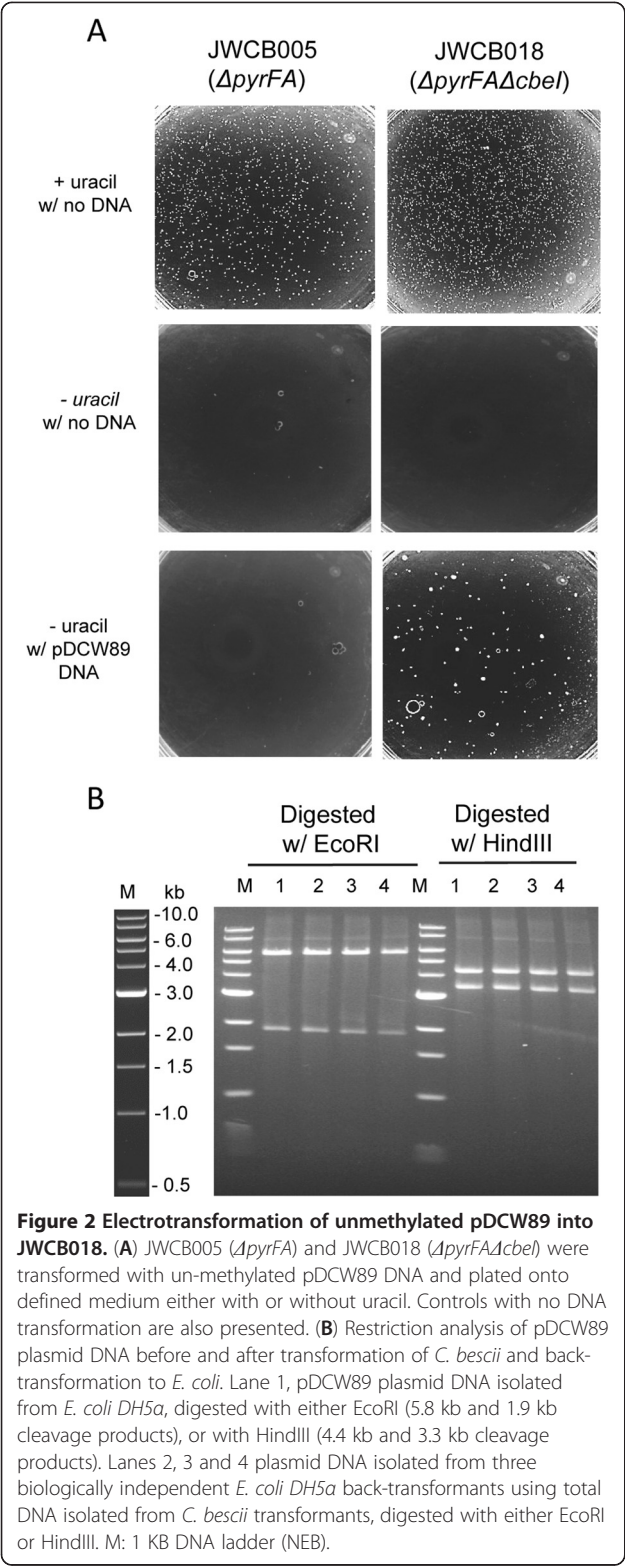
Conclusions

Here we report the construction of a deletion of *cbeI* (Cbes2438), which encodes a potent restriction endonuclease whose activity is apparently an absolute barrier to transformation of DNA from *E. coli* to *C. bescii*. We recently showed that *in vitro* methylation of DNA from *E. coli* with M.cbeI, a cognate methyltransferase from *C. bescii*, allowed transformation. Deletion of *cbeI* is the first targeted deletion in this genus and the resulting mutant, JWCB018 (Δ pyrFA Δ cbeI), is readily transformed by DNA isolated from *E. coli* without *in vitro* methylation. PCR amplification and sequencing suggested that this deletion left the adjacent methyltransferase (M.CbeI) intact and its function was confirmed by the fact that chromosomal DNA isolated from JWCB018 was protected from digestion by CbeI and HaeIII *in vitro*.

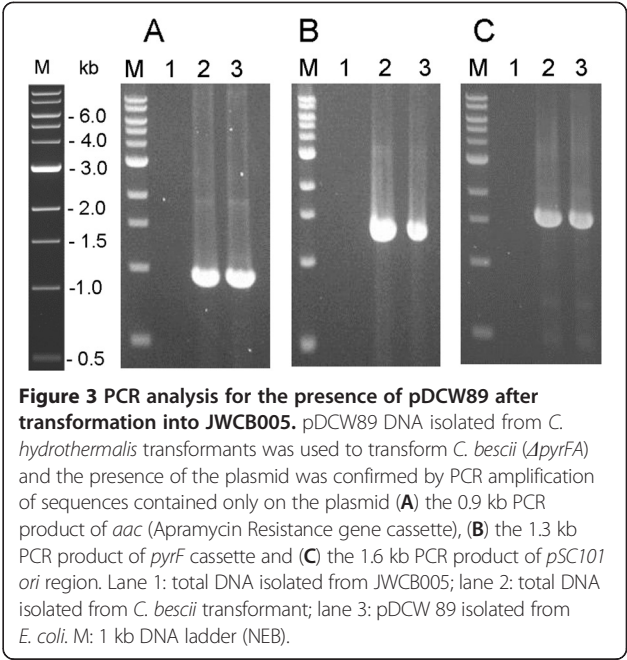
The construction of this mutant strain removes a substantial barrier to routine transformation and chromosomal modification and is substantially more efficient than other possible methods including modification of the vector prior to transformation, using engineered vectors containing no or fewer restriction sites recognized by restriction endonuclease in host [38,39], conditional

inactivation of the R-M systems [40,41] or using group II intron insertion technology to disrupt a restriction system in *Clostridium acetobutylicum* [26]. The ability demonstrated here to make targeted gene deletions is a powerful and direct tool for the investigation of *in vivo* gene function and the deletion of this endonuclease resulted in a strain that will provide the basis for further genetic manipulation. The combined efficiencies of transformation and homologous recombination (with as few as 450 bp of homology) in *C. bescii* allow us to use non-replicating plasmids for genetic manipulation. This is fortuitous and a significant benefit for the development of *Caldicellulosiruptor* species as CBP organisms. The proven CBP microbe, *Clostridium thermocellum*, for example, is genetically tractable but the efficiency of transformation and/or recombination does not permit the use of non-replicating plasmids for marker replacement, significantly extending the time required for mutant construction [42].

Plasmid DNA isolated from *C. hydrothermalis* was able to transform *C. bescii* JWCB005 (Δ pyrFA) and *C. bescii* JWCB018 (Δ pyrFA Δ cbeI), however total DNA isolated from the *C. bescii* transformant did not transform *C. hydrothermalis*. This apparent contradiction could be due to the low concentration of pDCW89 in total DNA isolated from the *C. bescii* transformant [13]. Alternatively, this may be due to yet another unidentified R-M system difference between these species. REBASE [18]



predicts that the genome of *C. bescii* encodes as many as six methyltransferases in addition to M.CbeI and that *C. hydrothermalis* contains as many as six restriction



endonucleases, one of which (Calhy0018) is a type IV (methyl-directed) restriction endonuclease not present in *C. bescii*. If this type IV restriction endonuclease is active and recognizes methylated DNA formed by a *C. bescii* methyltransferase not present in *C. hydrothermalis*, the DNA isolated directly from *C. bescii* would be cleaved. Somewhat surprisingly, the disruption of only one functional restriction enzyme was enough to overcome restriction as a barrier to transformation of *C. bescii* by *E. coli* DNA. This may be due to the fact that BamHI and BspEI are rare cutters in *C. bescii* genomic DNA and neither of these sites is present in pDCW88 used to make the deletion of *cbeI*. Only one BspEI site is present in the pDCW89 shuttle vector and that may be protected due to an overlapping *dam* site created by *in vivo* methylation in *E. coli* DH5 α . It is also possible that the cognate restriction endonuclease of the BspEI methyltransferase is inactive or absent altogether.

Perhaps the most powerful conclusion to be drawn from these data is the direction forward in overcoming R-M systems as a barrier to transformation of other *Caldicellulosiruptor* species. As shown in *C. bescii*, a 4 base cutter such as CbeI (5'-GGCC-3') is a formidable obstacle to transformation. In contrast, 6 base cutters can be easily avoided during plasmid construction (as with BamHI and BspEI here), as long as the functional R-M system is known. Based on our findings, all *Caldicellulosiruptor* species show at least three DNA methyltransferase activities (Table 1), though it is not known that all modification activities are paired with a cognate restriction activity. *In vitro* methylation of plasmid DNA with cell-free extracts may be useful going

forward to identify restriction activities that present obstacles to transformation. In any case, these observations emphasize that successful transformation is largely empirical. It was perhaps fortunate that *C. bescii* was the first chosen for genetic manipulation, because only one methyltransferase activity was required for efficient transformation of DNA from *E. coli*.

Methods

Strains, media and growth conditions

Caldicellulosiruptor and *E. coli* strains used in this study are listed in Table 2. All *Caldicellulosiruptor* species were grown anaerobically in liquid or on solid surface in either modified DSMZ 516 medium [14] or in low osmolarity defined (LOD) medium [43] with maltose as the carbon source. *C. bescii*, *C. kristjansonii*, and *C. obsidiansis* were incubated at 75°C. *C. hydrothermalis*, *C. kronotskyensis*, *C. lactoaceticus*, and *C. saccharolyticus* were incubated at 68°C. For growth of auxotrophic mutants, the defined medium contained 40 µM uracil. *E. coli* strain DH5α was used for plasmid DNA constructions and preparations. Standard techniques for *E. coli* were performed as described [44]. *E. coli* cells were grown in LB broth supplemented with apramycin (50 µg/mL) and plasmid DNA was isolated using a Qiagen Mini-prep Kit. Chromosomal DNA from *Caldicellulosiruptor* strains was extracted using the Quick-gDNA™ MiniPrep (Zymo) or using the DNeasy Blood & Tissue Kit (Qiagen) according to the manufacturer's instructions. Plasmid DNA isolation from *Caldicellulosiruptor* species was performed as described [15].

Construction of pDCW88

A 927 bp DNA fragment containing the 5' flanking region (440 bp) and the 3' flanking region (487 bp) of *cbeI* (Cbes2438) was generated by overlap extension polymerase chain reaction (OE-PCR) using primers DC265 (with KpnI site), DC266, DC267, and DC268 (with ApaLI site). All PCR reactions were performed using *pfu* turbo (Agilent Technologies), and *C. bescii* genomic DNA as a template. The DNA fragments containing the apramycin resistance gene cassette, *pyrF* cassette, and the *E. coli* *pSC101* replication origin, were amplified from pDCW89 [13] using primers DC081 (with KpnI site) and DC262 (with ApaLI site). These two linear DNA fragments were digested with KpnI and ApaLI, and ligated to generate pDCW88 using Fast-link DNA Ligase kit (Epicentre Biotechnologies) according to the manufacturer's instructions. DNA sequences of the primers are shown in Additional file 1: Table S1. A diagram of pDCW88 is shown in Additional file 1: Figure S2. *E. coli* strain DH5α cells were transformed by electroporation in a 2-mm-gap cuvette at 2.5 V and transformants were selected for apramycin resistance. The sequence of

pDCW88 was confirmed by Automatic sequencing (Macrogen USA, Maryland). All plasmids are available on request.

Screening, purification, and sequence verification of deletion mutants

To construct strain JWCB018, one microgram of M.CbeI methylated pDCW88 DNA was used to electrotransform JWCB005 (*ΔpyrFA*) as described [14]. Cells were then plated onto solid defined medium (without uracil and casein) and uracil prototrophic transformant colonies were inoculated into liquid medium for genomic DNA extraction and subsequent PCR screening of the targeted region. Confirmed transformants were inoculated into nonselective liquid defined medium, with 40 µM uracil, and incubated overnight at 75°C to allow loop-out of the plasmid DNA. The cultures were plated onto 5-FOA (8 mM) containing solid medium. After initial screening, transformants containing the expected deletion were further purified by three additional passages under selection on solid medium and screened a second time by PCR to check for segregation of the deleted allele. The deletions were then verified by PCR amplification and sequence analysis. A PCR product was generated from genomic DNA by using primers (DC277 and DC239) outside the homologous regions used to construct the deletion, and internal primers were used to sequence the PCR product. For PCR, the extension time was sufficient to allow amplification of the wild-type allele, if it were still present. Another set of primers, one located inside of the Cbes2438 open reading frame, and the other located outside of the flanking region were used for further verification. Growth of this strain, JWCB018, supplemented with uracil (40 µM) was comparable to wild type reaching a cell density of $\sim 2 \times 10^8$ in 20 hours. Cells were counted in a Petroff Hausser counting chamber using a phase-contrast microscope with 40X magnification.

Transformation of *C. bescii* and selection of transformants

Electrotransformations of JWCB005 and JWCB018 with unmethylated pDCW89 from *E. coli* or isolated plasmid DNA from *C. hydrothermalis* transformants were performed as described [14]. For selection of transformants, after electro-pulse the recovery cultures with pDCW89 DNA (0.5 – 1.0 µg) were plated onto the defined medium without casein and uracil. Uracil prototrophic transformants were inoculated into liquid medium for DNA isolation. The presence of plasmid sequences in *C. bescii* transformants was confirmed by PCR amplification of the *aac* (apramycin resistance gene cassette) gene, the *pSC101 ori* region, and the *pyrF* cassette, present only on pDCW89. The

transformation frequencies reported herein take into account the number of cells plated as determined by culture cell counts (this does not take into account the plating efficiency), and, where indicated, the total amount of DNA added (i.e., the number of transformants per microgram of DNA). *E. coli* strain DH5 α cells were used for back-transformation.

Restriction endonuclease digestion of *Caldicellulosiruptor* species chromosomal DNA

Chromosomal DNA isolated from seven *Caldicellulosiruptor* species was subjected to digestion with the REs AluI, BamHI, BspEI, EcoRI, HaeIII, HhaI, HpaII, MboI, and MspI. All enzymes were from New England Biolabs. For each reaction, 1 microgram of DNA was incubated with the enzyme and appropriate buffer for 1 hour according to the manufacturer's instructions. After incubation, digestion patterns were compared by electrophoresis on a 1.0% agarose gel.

Additional file

Additional file 1: Figure S1. Restriction endonuclease digests of chromosomal DNA isolated from *Caldicellulosiruptor* species. The nine restriction enzymes employed in this analysis are indicated on the top of the gel. **(A)** *C. bescii* chromosomal DNA. **(B)** *C. saccharolyticus* chromosomal DNA. M: 1 kb DNA ladder (NEB). **Figure S2.** Diagram of the *cbel* (Cbes2438) knock-out vector. The gray colored boxes indicate sequences originating from *C. bescii*. Restriction sites and primers are indicated. *aac*, apramycin resistant gene cassette; pSC101, low copy replication origin in *E. coli*; *repA* and *par*, plasmid-encoded genes required for pSC101 replication and partition. **Table S1.** Primers used in this study.

Abbreviations

CBP: Consolidated bioprocessing; *C. bescii*: *Caldicellulosiruptor bescii*; *C. hydrothermalis*: *Caldicellulosiruptor hydrothermalis*; *C. kristjanssonii*: *Caldicellulosiruptor kristjanssonii*; *C. saccharolyticus*: *Caldicellulosiruptor saccharolyticus*; *C. obsidiansis*: *Caldicellulosiruptor obsidiansis*; *C. lactoaceticus*: *Caldicellulosiruptor lactoaceticus*; *C. kronotskyensis*: *Caldicellulosiruptor kronotskyensis*; R-M: Restriction-modification; REBASE: Restriction Enzyme Database; 5-FOA: 5-fluoroorotic acid; LOD: Low osmolarity defined; *Aac*: Apramycin resistance gene cassette; LB: Luria broth.

Competing interests

The authors declare that they have no competing interests.

Authors' contributions

DC designed and carried out the overall experiments, analyzed results and wrote the manuscript. JF participated in its design and coordination, carried out the restriction analysis, and drafted the manuscript. JW helped conceive of the study, participated in its design and coordination, and helped to draft and reviewed the manuscript. All authors read and approved the final manuscript.

Acknowledgements

We thank Jennifer Copeland for outstanding technical assistance, Bob Kelly and Sara Blumer-Schuetz for providing the *Caldicellulosiruptor* species used in this study, Joe Groom and Jenna Young for critical review of the manuscript. This work was supported by The BioEnergy Science Center supported by a U.S. Department of Energy Bioenergy Research Center supported by the Office of Biological and Environmental Research in the DOE Office of Science. JF was supported in part by a predoctoral Graduate Training in Genetics grant (NIH 5T32GM007103-30) to the Genetics Department of the University of Georgia.

Received: 1 April 2013 Accepted: 21 May 2013

Published: 29 May 2013

References

- Himmel ME, Ding SY, Johnson DK, Adney WS, Nimlos MR, Brady JW, Foust TD: Biomass recalcitrance: engineering plants and enzymes for biofuels production. *Science* 2007, **315**:804–807.
- McCann MC, Carpita NC: Designing the deconstruction of plant cell walls. *Curr Opin Plant Biol* 2008, **11**:314–320.
- Wilson DB: Three microbial strategies for plant cell wall degradation. *Ann N Y Acad Sci* 2008, **1125**:289–297.
- Blumer-Schuetz SE, Giannone RJ, Zurawski JV, Ozdemir I, Ma Q, Yin Y, Xu Y, Kataeva I, Poole FL 2nd, Adams MW, et al: *Caldicellulosiruptor* core and pangenomes reveal determinants for noncellulosomal thermophilic deconstruction of plant biomass. *J Bacteriol* 2012, **194**:4015–4028.
- Blumer-Schuetz SE, Kataeva I, Westpheling J, Adams MW, Kelly RM: Extremely thermophilic microorganisms for biomass conversion: status and prospects. *Curr Opin Biotechnol* 2008, **19**:210–217.
- Yang SJ, Kataeva I, Hamilton-Brehm SD, Engle NL, Tschaplinski TJ, Doeppke C, Davis M, Westpheling J, Adams MW: Efficient degradation of lignocellulosic plant biomass, without pretreatment, by the thermophilic anaerobe "Anaerocellum thermophilum" DSM 6725. *Appl Environ Microbiol* 2009, **75**:4762–4769.
- Blumer-Schuetz SE, Lewis DL, Kelly RM: Phylogenetic, microbiological, and glycoside hydrolase diversities within the extremely thermophilic, plant biomass-degrading genus *Caldicellulosiruptor*. *Appl Environ Microbiol* 2010, **76**:8084–8092.
- Dam P, Kataeva I, Yang SJ, Zhou F, Yin Y, Chou W, Poole FL 2nd, Westpheling J, Hettich R, Giannone R, et al: Insights into plant biomass conversion from the genome of the anaerobic thermophilic bacterium *Caldicellulosiruptor bescii* DSM 6725. *Nucleic Acids Res* 2011, **39**:3240–3254.
- Bayer EA, Belaich JP, Shoham Y, Lamed R: The cellulosomes: multienzyme machines for degradation of plant cell wall polysaccharides. *Annu Rev Microbiol* 2004, **58**:521–554.
- Bayer EA, Setter E, Lamed R: Organization and distribution of the cellulosome in *Clostridium thermocellum*. *J Bacteriol* 1985, **163**:552–559.
- Gold ND, Martin VJ: Global view of the *Clostridium thermocellum* cellulosome revealed by quantitative proteomic analysis. *J Bacteriol* 2007, **189**:6787–6795.
- Lynd LR, van Zyl WH, McBride JE, Laser M: Consolidated bioprocessing of cellulosic biomass: an update. *Curr Opin Biotechnol* 2005, **16**:577–583.
- Chung D, Cha M, Farkas J, Westpheling J: Construction of a stable replicating shuttle vector for *Caldicellulosiruptor* species: Use for extending genetic methodologies to other members of this Genus 2013. *PLoS One* 2013, **8**:e62881.
- Chung D, Farkas J, Huddleston JR, Oliver E, Westpheling J: Methylation by a unique α -class N4-cytosine methyltransferase is required for DNA transformation of *Caldicellulosiruptor bescii* DSM6725. *PLoS One* 2012, **7**:e43844.
- Chung DH, Huddleston JR, Farkas J, Westpheling J: Identification and characterization of Cbel, a novel thermostable restriction enzyme from *Caldicellulosiruptor bescii* DSM 6725 and a member of a new subfamily of HaeIII-like enzymes. *J Ind Microbiol Biotechnol* 2011, **38**:1867–1877.
- Bertani G, Weigle JJ: Host controlled variation in bacterial viruses. *J Bacteriol* 1953, **65**:113–121.
- Luria SE, Human ML: A nonhereditary, host-induced variation of bacterial viruses. *J Bacteriol* 1952, **64**:557–569.
- Roberts RJ, Vincze T, Posfai J, Macelis D: REBASE—a database for DNA restriction and modification: enzymes, genes and genomes. *Nucleic Acids Res* 2010, **38**:D234–236.
- Roberts RJ, Belfort M, Bestor T, Bhagwat AS, Bickle TA, Bitinaite J, Blumenthal RM, Degtyarev S, Dryden DT, Dybvig K, et al: A nomenclature for restriction enzymes, DNA methyltransferases, homing endonucleases and their genes. *Nucleic Acids Res* 2003, **31**:1805–1812.
- Arber W, Linn S: DNA modification and restriction. *Annu Rev Biochem* 1969, **38**:467–500.
- Murray NE: 2001 Fred Griffith review lecture. Immigration control of DNA in bacteria: self versus non-self. *Microbiology* 2002, **148**:3–20.
- Thomas CM, Nielsen KM: Mechanisms of, and barriers to, horizontal gene transfer between bacteria. *Nat Rev Microbiol* 2005, **3**:711–721.

23. Ohshima H, Matsuoka S, Asai K, Sadaie Y: **Molecular organization of intrinsic restriction and modification genes BsuM of *Bacillus subtilis* Marburg.** *J Bacteriol* 2002, **184**:381–389.
24. Iwai M, Katoh H, Katayama M, Ikeuchi M: **Improved genetic transformation of the thermophilic cyanobacterium, *Thermosynechococcus elongatus* BP-1.** *Plant Cell Physiol* 2004, **45**:171–175.
25. Kawabata H, Norris SJ, Watanabe H: **BBE02 disruption mutants of *Borrelia burgdorferi* B31 have a highly transformable, infectious phenotype.** *Infect Immun* 2004, **72**:7147–7154.
26. Dong H, Zhang Y, Dai Z, Li Y: **Engineering clostridium strain to accept unmethylated DNA.** *PLoS One* 2010, **5**:e9038.
27. Benson DA, Karsch-Mizrachi I, Lipman DJ, Ostell J, Sayers EW: **GenBank.** *Nucleic Acids Res* 2010, **38**:D46–51.
28. Bredholt S, Sonne-Hansen J, Nielsen P, Mathrani IM, Ahring BK: ***Caldicellulosiruptor kristjanssonii* sp. nov., a cellulolytic, extremely thermophilic, anaerobic bacterium.** *Int J Syst Bacteriol* 1999, **49**(3):991–996.
29. Hamilton-Brehm SD, Mosher JJ, Vishnivetskaya T, Podar M, Carroll S, Allman S, Phelps TJ, Keller M, Elkins JG: ***Caldicellulosiruptor obsidiansis* sp. nov., an anaerobic, extremely thermophilic, cellulolytic bacterium isolated from obsidian pool, yellowstone national park.** *Appl Environ Microbiol* 2010, **76**:1014–1020.
30. Huang CY, Patel BK, Mah RA, Baresi L: ***Caldicellulosiruptor owensensis* sp. nov., an anaerobic, extremely thermophilic, xylanolytic bacterium.** *Int J Syst Bacteriol* 1998, **48**(1):91–97.
31. Miroshnichenko ML, Kublanov IV, Kostrikin NA, Tourova TP, Kolganova TV, Birkeland NK, Bonch-Osmolovskaya EA: ***Caldicellulosiruptor kronotskyensis* sp. nov. and *Caldicellulosiruptor hydrothermalis* sp. nov., two extremely thermophilic, cellulolytic, anaerobic bacteria from Kamchatka thermal springs.** *Int J Syst Evol Microbiol* 2008, **58**:1492–1496.
32. Rainey FA, Donnison AM, Janssen PH, Saul D, Rodrigo A, Bergquist PL, Daniel RM, Stackebrandt E, Morgan HW: **Description of *Caldicellulosiruptor saccharolyticus* gen. nov., sp. nov.: an obligately anaerobic, extremely thermophilic, cellulolytic bacterium.** *FEMS Microbiol Lett* 1994, **120**:263–266.
33. Svetlichnyi VA, Svetlichnaya TP, Chernykh NA, Zavarzin GA: ***Anaerocellum thermophilum* Gen. Nov. Sp. Nov. An extremely thermophilic cellulolytic eubacterium isolated from Hot-springs in the valley of geysers.** *Microbiology* 1990, **59**:598–604.
34. Grogan DW: **Cytosine methylation by the SuaI restriction-modification system: implications for genetic fidelity in a hyperthermophilic archaeon.** *J Bacteriol* 2003, **185**:4657–4661.
35. Donahue JP, Israel DA, Peek RM, Blaser MJ, Miller GG: **Overcoming the restriction barrier to plasmid transformation of *Helicobacter pylori*.** *Mol Microbiol* 2000, **37**:1066–1074.
36. Chung D, Farkas J, Westpheling J: **Detection of a novel active transposable element in *Caldicellulosiruptor hydrothermalis* and a new search for elements in this genus.** *J Ind Microbiol Biotechnol* 2013, **40**(5):517–521. doi:10.1007/s10295-013-1244-z.
37. Clausen A, Mikkelsen MJ, Schroder I, Ahring BK: **Cloning, sequencing, and sequence analysis of two novel plasmids from the thermophilic anaerobic bacterium *Anaerocellum thermophilum*.** *Plasmid* 2004, **52**:131–138.
38. Elhai J, Vepritskiy A, Muro-Pastor AM, Flores E, Wolk CP: **Reduction of conjugal transfer efficiency by three restriction activities of *Anabaena* sp. strain PCC 7120.** *J Bacteriol* 1997, **179**:1998–2005.
39. Lee SY, Mermelstein LD, Bennett GN, Papoutsakis ET: **Vector construction, transformation, and gene amplification in *Clostridium acetobutylicum* ATCC 824.** *Ann N Y Acad Sci* 1992, **665**:39–51.
40. Edwards RA, Helm RA, Maloy SR: **Increasing DNA transfer efficiency by temporary inactivation of host restriction.** *Biotechniques* 1999, **26**:892–894. 896, 898 passim.
41. van der Rest ME, Lange C, Molenaar D: **A heat shock following electroporation induces highly efficient transformation of *Corynebacterium glutamicum* with xenogeneic plasmid DNA.** *Appl Microbiol Biotechnol* 1999, **52**:541–545.
42. Tripathi SA, Olson DG, Argyros DA, Miller BB, Barrett TF, Murphy DM, McCool JD, Warner AK, Rajgarhia VB, Lynd LR, et al: **Development of pyrF-based genetic system for targeted gene deletion in *Clostridium thermocellum* and creation of a pta mutant.** *Appl Environ Microbiol* 2010, **76**:6591–6599.
43. Farkas J, Chung D, Cha M, Copeland J, Grayeski P, Westpheling J: **Improved growth media and culture techniques for genetic analysis and assessment of biomass utilization by *Caldicellulosiruptor bescii*.** *J Ind Microbiol Biotechnol* 2013, **40**:41–49. doi:10.1007/s10295-012-1202-1.
44. Sambrook J, Russell D: *Molecular cloning: a laboratory manual*. Cold Spring Harbor Laboratory Press; 2001.

doi:10.1186/1754-6834-6-82

Cite this article as: Chung *et al.*: Overcoming restriction as a barrier to DNA transformation in *Caldicellulosiruptor* species results in efficient marker replacement. *Biotechnology for Biofuels* 2013 **6**:82.

Submit your next manuscript to BioMed Central and take full advantage of:

- Convenient online submission
- Thorough peer review
- No space constraints or color figure charges
- Immediate publication on acceptance
- Inclusion in PubMed, CAS, Scopus and Google Scholar
- Research which is freely available for redistribution

Submit your manuscript at
www.biomedcentral.com/submit

