

# 2007 Nissan Altima-2351 Hybrid Electric Vehicle Battery Test Results



*Tyler Gray  
Chester Motloch  
James Francfort*

January 2010

The Idaho National Laboratory is a U.S. Department of Energy National Laboratory  
Operated by Battelle Energy Alliance

# **2007 Nissan Altima-2351 Hybrid Electric Vehicle Battery Test Results**

***Tyler Gray<sup>1</sup>  
Chester Motloch<sup>1</sup>  
James Francfort<sup>2</sup>***

**January 2010**

**Prepared for the  
U.S. Department of Energy  
Assistant Secretary for Energy Efficiency and Renewable Energy  
Under DOE Idaho Operations Office  
Contract DE-AC07-05ID14517**

---

1 Electric Transportation Engineering Corporation

2 Idaho National Laboratory

***Disclaimers***

This document highlights work sponsored by agencies of the U.S. Government. Neither the U.S. Government nor any agency thereof, nor any of its employees, makes any warranty, express or implied, or assumes any legal liability or responsibility for the accuracy, completeness, or usefulness of any information, apparatus, product, or process disclosed, or represents that its use would not infringe privately owned rights. Reference herein to any specific commercial product, process, or service by trade name, trademark, manufacturer, or otherwise does not necessarily constitute or imply its endorsement, recommendation, or favoring by the U.S. Government or any agency thereof. The views and opinions of authors expressed herein do not necessarily state or reflect those of the U.S. Government or any agency thereof.

## **ABSTRACT**

The U.S. Department of Energy's Advanced Vehicle Testing Activity conducts several different types of tests on hybrid electric vehicles (HEVs), including testing the HEV batteries when both the vehicles and batteries are new and at the conclusion of 160,000 miles of on-road accelerated testing. This report documents battery testing performed and battery testing results for the 2007 Nissan Altima HEV, number 2351 (VIN 1N4CL21E87C172351). The battery testing was performed by the Electric Transportation Engineering Corporation. The Idaho National Laboratory and the Electric Transportation Engineering Corporation conduct the Advanced Vehicle Testing Activity for the U.S. Department of Energy's Vehicle Technologies Program.

## CONTENTS

ABSTRACT.....	iii
ACRONYMS.....	v
1. TEST RESULTS .....	1
1.1 Static Capacity Test Results.....	1
1.2 Hybrid Pulse Power Characterization Test Results.....	2
1.3 Acceleration Test Results.....	6
1.4 Fuel Economy Test Results.....	8
1.5 Conclusion .....	12

## FIGURES

1. Voltage versus energy discharged.....	2
2. Ten-second charge pulse resistance versus energy discharged.....	3
3. Ten-second charge pulse power versus energy discharged.....	3
4. Ten-second discharge pulse resistance versus energy discharged .....	4
5. Ten-second discharge pulse power versus energy discharged .....	4
6. Peak power values with Department of Energy targets .....	5
7. Useable energy .....	6
8. Battery power versus time.....	7
9. Battery voltage versus time.....	7
10. Battery current versus time .....	8
11. Percent time at motive power level.....	9
12. Percent time at regenerative power level .....	10
13. Regenerative energy source comparison.....	11
14. Ideal regenerative energy destination.....	11
15. Monthly and cumulative fuel economy.....	12

## ACRONYMS

Ah	amp-hour
BOT	beginning of test
DOE	U.S. Department of Energy
EOT	end of test
HEV	hybrid electric vehicle
HPPC	Hybrid Pulse Power Characterization
kW	kilowatt
SOC	state of charge
V	volt
VDC	volt direct current
VIN	vehicle identification number
Vpc	volt per cell
Wh	watt-hour

# 2007 Nissan Altima-2351 Hybrid Battery Test Results

## 1. TEST RESULTS

The U.S. Department of Energy's (DOE's) Advanced Vehicle Testing Activity conducts vehicle, battery, and infrastructure testing on several different vehicle technologies, including hybrid electric vehicles (HEVs). This report provides test results for beginning-of-test (BOT) and end-of-test (EOT) battery testing conducted on a 2007 Nissan Altima HEV, number 2351 (VIN 1N4CL21E87C172351) in the battery test laboratory and during vehicle operations. BOT testing is conducted when a vehicle is new and EOT testing is conducted after a vehicle has completed approximately 160,000 miles of on-road accelerated testing. The battery laboratory test results include those from the Static Capacity Test and the Hybrid Pulse Power Characterization (HPPC) Test.<sup>3</sup> Vehicle test results include those from Acceleration Testing and Fuel Economy Testing.<sup>4</sup>

The battery and vehicle testing was performed by the Electric Transportation Engineering Corporation. The Idaho National Laboratory and the Electric Transportation Engineering Corporation conduct the Advanced Vehicle Testing Activity for DOE's Vehicle Technologies Program.

### 1.1 Static Capacity Test Results

Results from the laboratory BOT and EOT Static Capacity Test are provided as follows:

	Test Date	Odometer (mi)	Rated Capacity (Ah)	Measured Capacity (Ah)	Measured Energy (Wh)
BOT	September 20, 2007	413	6.5	5.74	1,480
EOT	August 14, 2009	161,111	6.5	5.62	1,446
Difference	—	160,698	—	-0.12 (-2.1%)	-34 (-2.3%)

Figure 1 shows battery voltage versus energy discharged. This graph illustrates voltage values during constant current discharge versus cumulative energy discharged from the battery at a C/1 constant current discharge rate at BOT and EOT.

---

<sup>3</sup> Static Capacity and HPPC test procedures were performed based on the *FreedomCAR Battery Test Manual for Power-Assist Hybrid Electric Vehicles*, DOE/ID-11069, October 2003, Procedures 3.2 and 3.3, respectively. The measured capacity at the time of testing was used to determine the magnitude of current during the HPPC test.

<sup>4</sup> Acceleration Testing and Fuel Economy Testing procedures were performed in accordance with the Advanced Vehicle Testing Activity HEVAmerica test procedures ETA-HTP02 and ETA-HTP03, respectively.

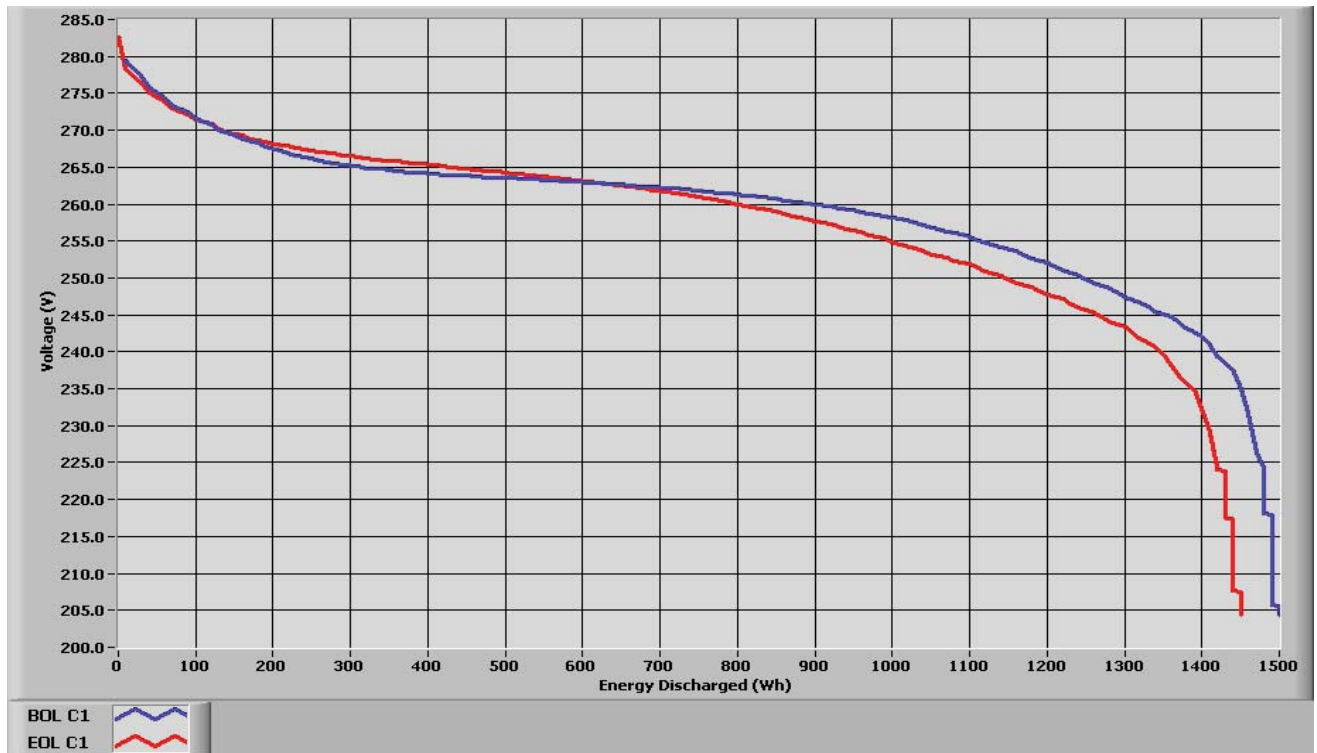


Figure 1. Voltage versus energy discharged.

## 1.2 Hybrid Pulse Power Characterization Test Results

HPPC test results are summarized as follows:

	10s Discharge Power (kW)	1s Discharge Power (kW)	10s Charge Power (kW)	1s Charge Power (kW)	Maximum Cell Voltage (V)	Minimum Cell Voltage (V)
BOT	25.7	34.4	23.4	32.2	1.5	1.0
EOT	25.9	35.7	24.1	36.9	1.5	1.0
Difference	0.2 (0.8%)	1.2 (3.5%)	0.7 (3.0%)	4.7 (15%)	—	—

Figures 2 and 4 illustrate the battery's charge and discharge pulse resistance graphs, showing internal resistance over a range of 10 to 90% depth of discharge. Each curve represents the specified HPPC BOT or EOT resistance at the end of the 10-second pulse interval.

Figures 3 and 5 illustrate the battery's charge and discharge pulse power graphs, showing the pulse power over a range of 10 to 90% depth of discharge. Each curve represents the specified HPPC BOT or EOT available power at the end of the 10-second pulse interval at the cell voltage limits.

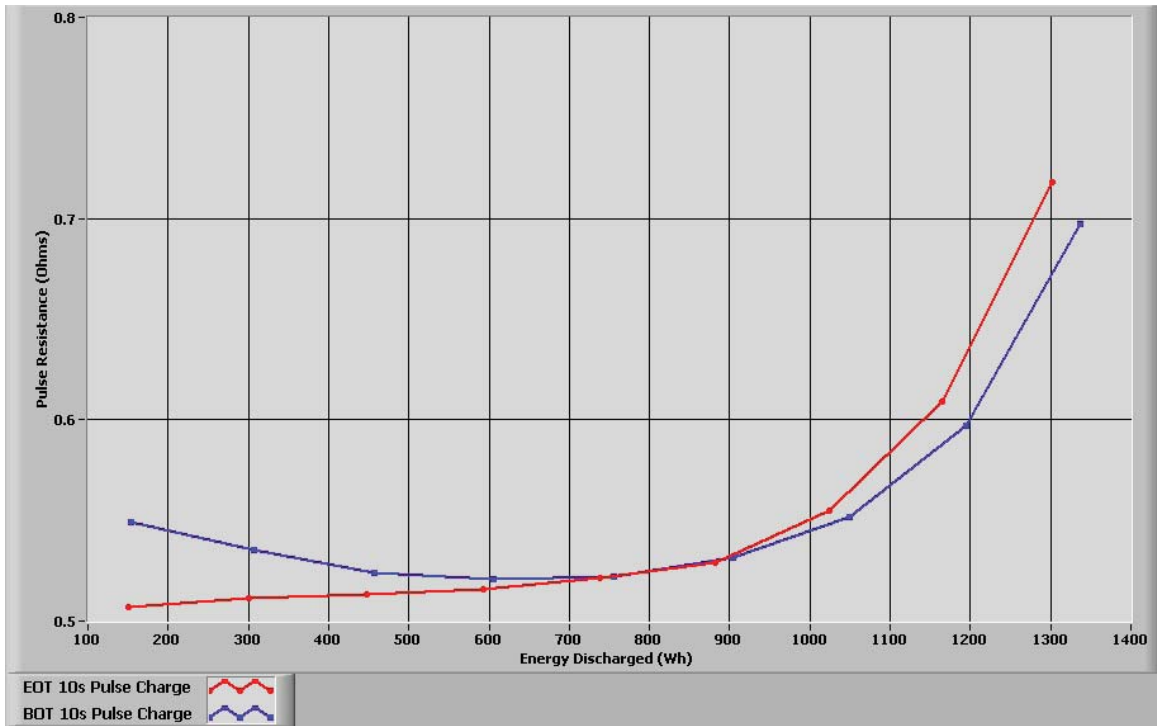


Figure 2. Ten-second charge pulse resistance versus energy discharged.

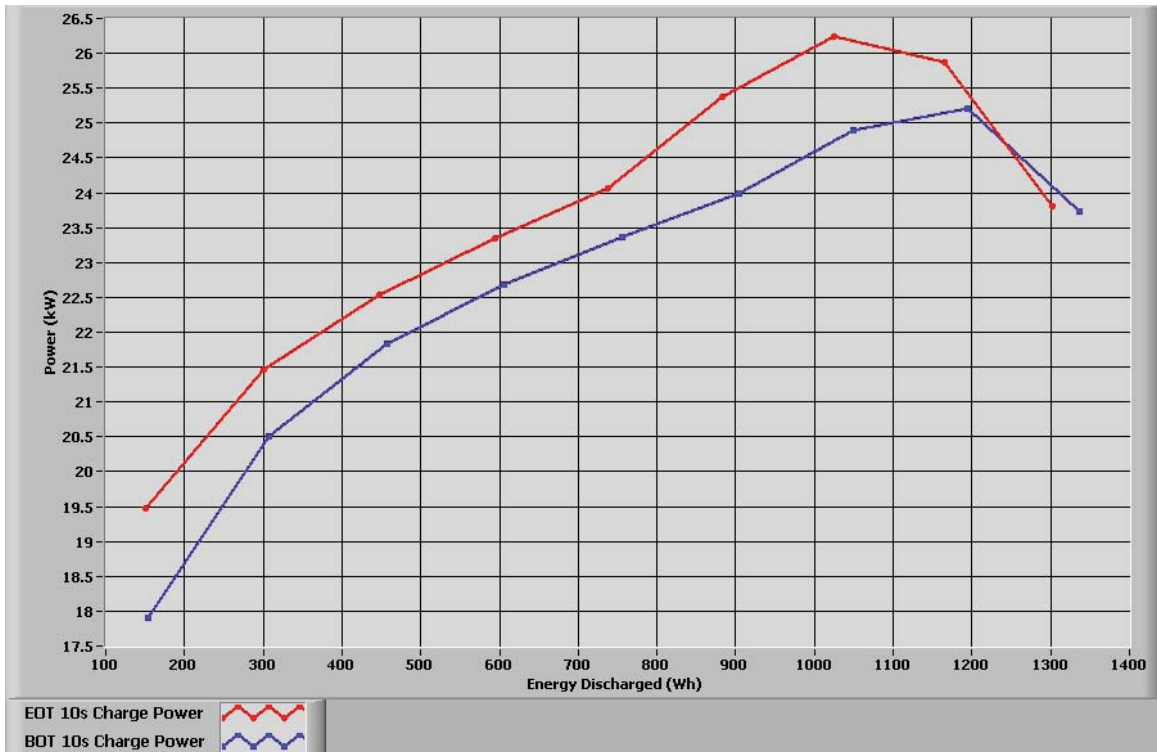


Figure 3. Ten-second charge pulse power versus energy discharged.

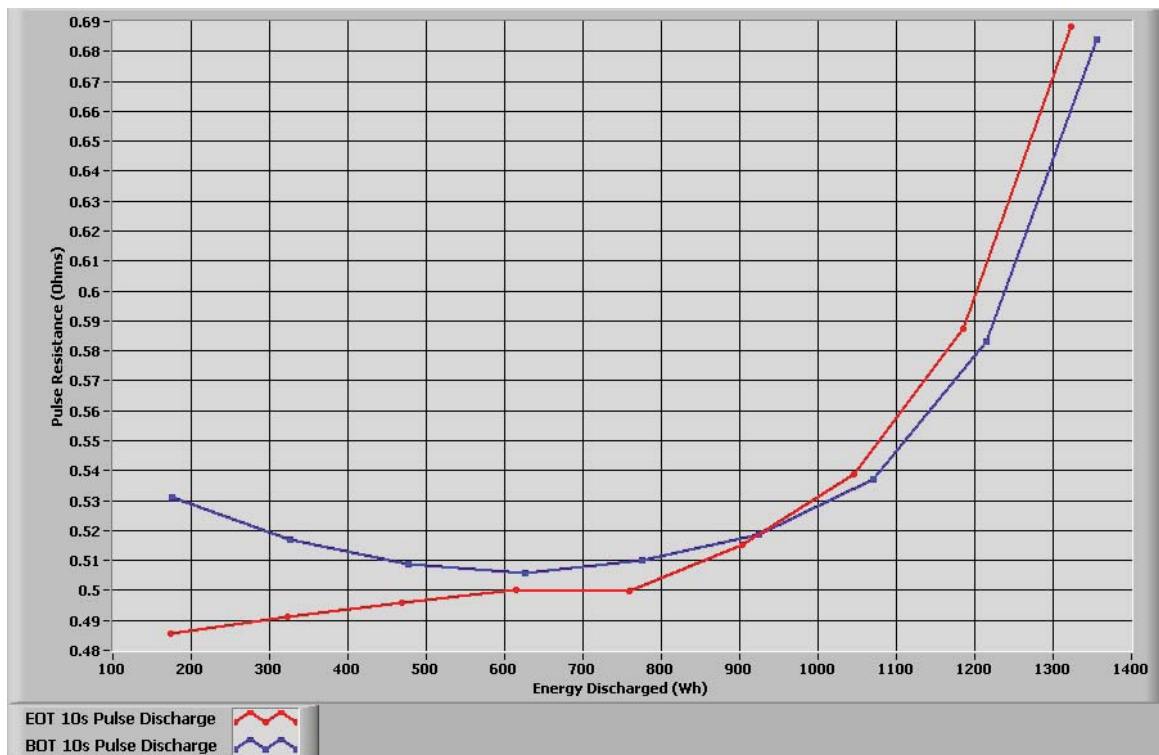


Figure 4. Ten-second discharge pulse resistance versus energy discharged.

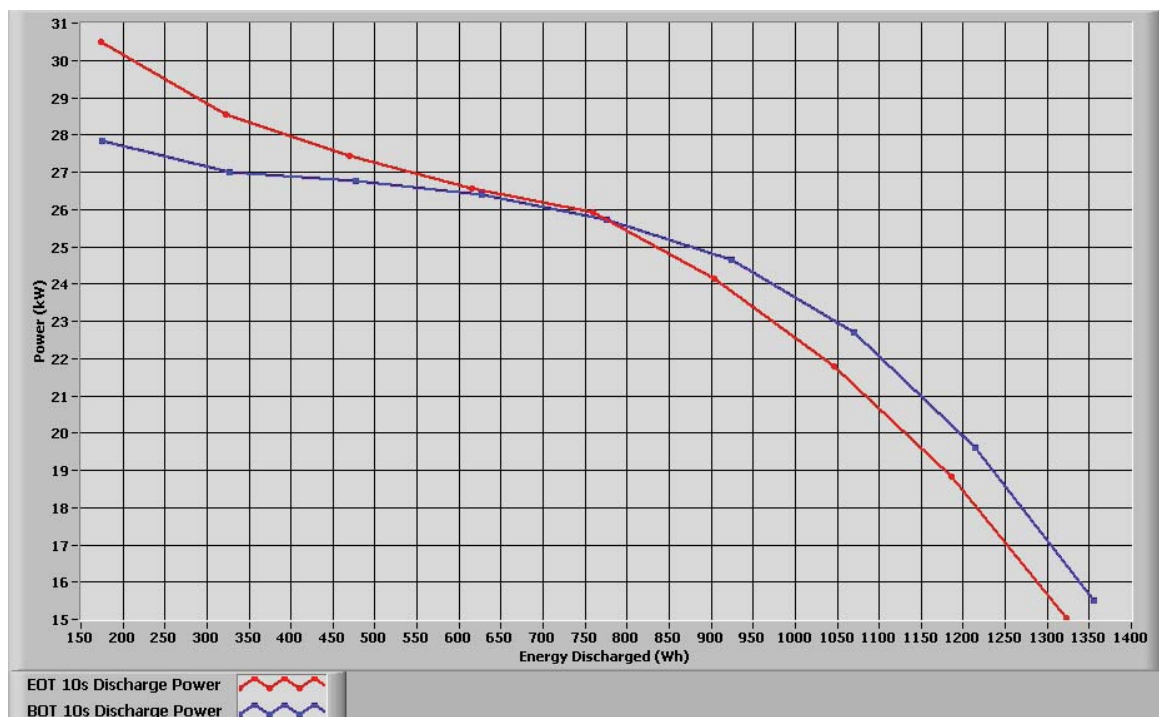


Figure 5. Ten-second discharge pulse power versus energy discharged.

Figure 6 is a plot of the battery's BOT and EOT HPPC 10-second pulse power values as a function of state of charge (SOC). The graph shows the power values over the range of SOC and DOE targets of 25-kW discharge power and 20-kW regenerative power for a hybrid minimum power assist battery. The BOT battery test meets DOE power performance targets for battery SOC range of 82 to 42.5%. The EOT battery test meets DOE power performance targets for battery SOC range of 87.5 to 43%.

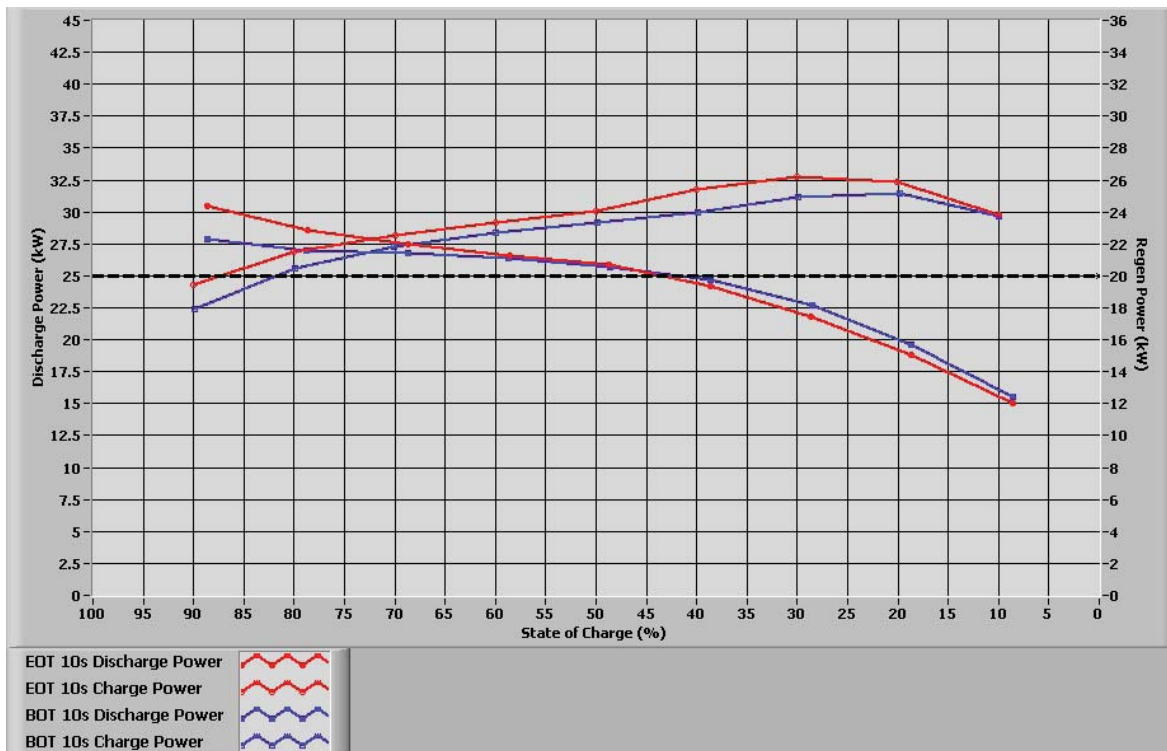


Figure 6. Peak power values with Department of Energy target.

Figure 7 is a plot of the battery's BOT and EOT useable energy as a function of power. The x-axis indicates a desired discharge or charge power level and the y-axis indicates the useable energy at that power. The dashed horizontal line shows the DOE minimum power assist HEV energy target of 300 Wh. The dashed vertical line shows the DOE minimum power assist power performance target of 25 kW. The Altima battery's BOT useable energy curve falls above and to the right of the intersection of DOE energy and power performance targets. The maximum power that can be delivered while meeting the DOE energy target is 26.2 kW at 300 Wh. The maximum energy that can be delivered while meeting the DOE power target is 625 Wh at 25 kW. This indicates that at the time of BOT testing the Altima battery performance was above DOE targets. The Altima battery's EOT useable energy curve falls above and to the right of the intersection of DOE energy and power performance targets. The maximum power that can be delivered while meeting the DOE energy target is 26.6 kW at 300 Wh. The maximum energy that can be delivered while meeting the DOE power target is 665 Wh at 25 kW. This indicates that at the time of EOT testing, the Altima battery performance was above DOE targets.

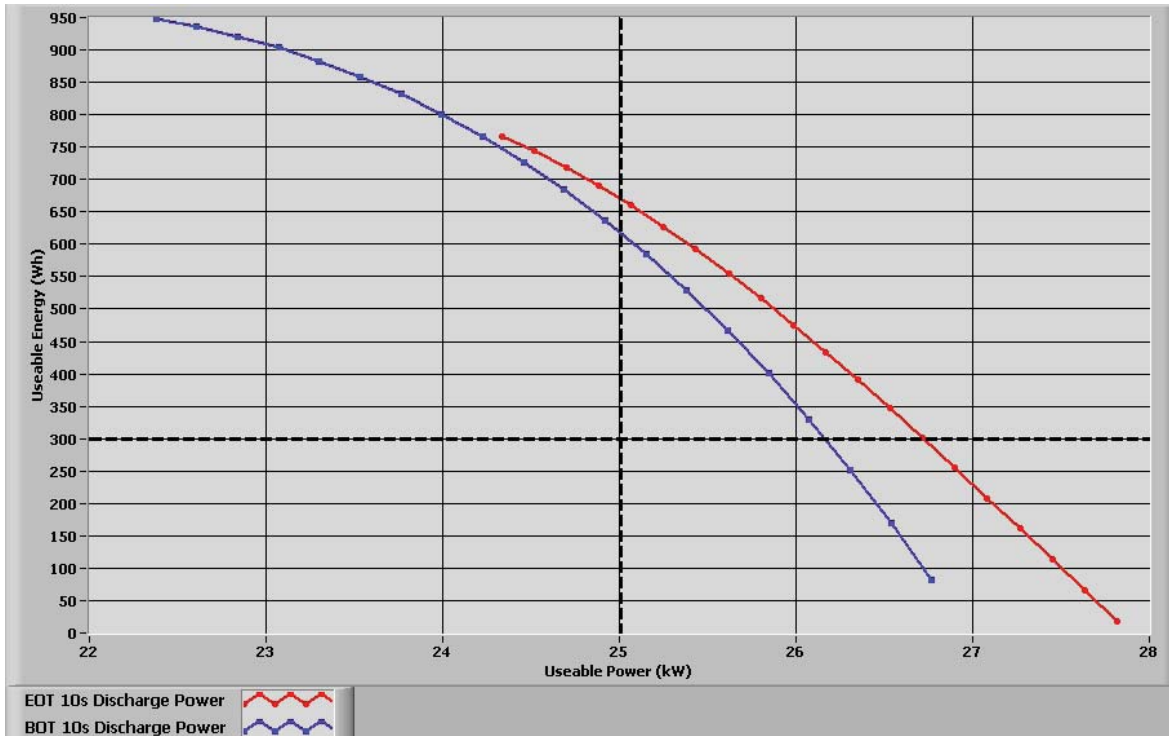


Figure 7. Usable energy.

### 1.3 Acceleration Test Results

BOT and EOT results from vehicle on-track acceleration tests are summarized as follows:

	Average Discharge Power Over 10s (kW)	Energy Discharged at 1 Mile (Wh)	Capacity Discharged at 1 Mile (Ah)	Average Power Over 1 Mile (kW)	Minimum Discharge Pack Voltage (V)	Minimum Discharge Cell Voltage (V)
BOT	25.8	189	0.88	17.1	209.8	1.03
EOT	26.4	201	0.91	17.9	213.0	1.04

Figure 8 shows battery power versus time during the 1-mile acceleration test at EOT and BOT. This graph is the basis for power calculations over the specified time interval and the cumulative discharged energy capacity during the duration of the test. Initially, during the acceleration test, the power quickly ramps up from about 0 kW to a peak value. This initial peak power is used as a reference point for the complement of the power analyses. Ideally, the power would remain constant; however, battery system dynamics, which may include battery control logic, cause the voltage to drop, resulting in a gradual reduction in power.

Figure 9 shows battery voltage versus time during the 1-mile acceleration test at BOT and EOT. Values are analyzed to determine the battery control module's minimum allowable voltage if possible. Although the test may not yield a definitive minimum voltage value, it can yield an approximation for comparison to the HPPC analysis results. This graph also shows the impact of power electronics and battery controller on the voltage response.



Figure 8. Battery power versus time.

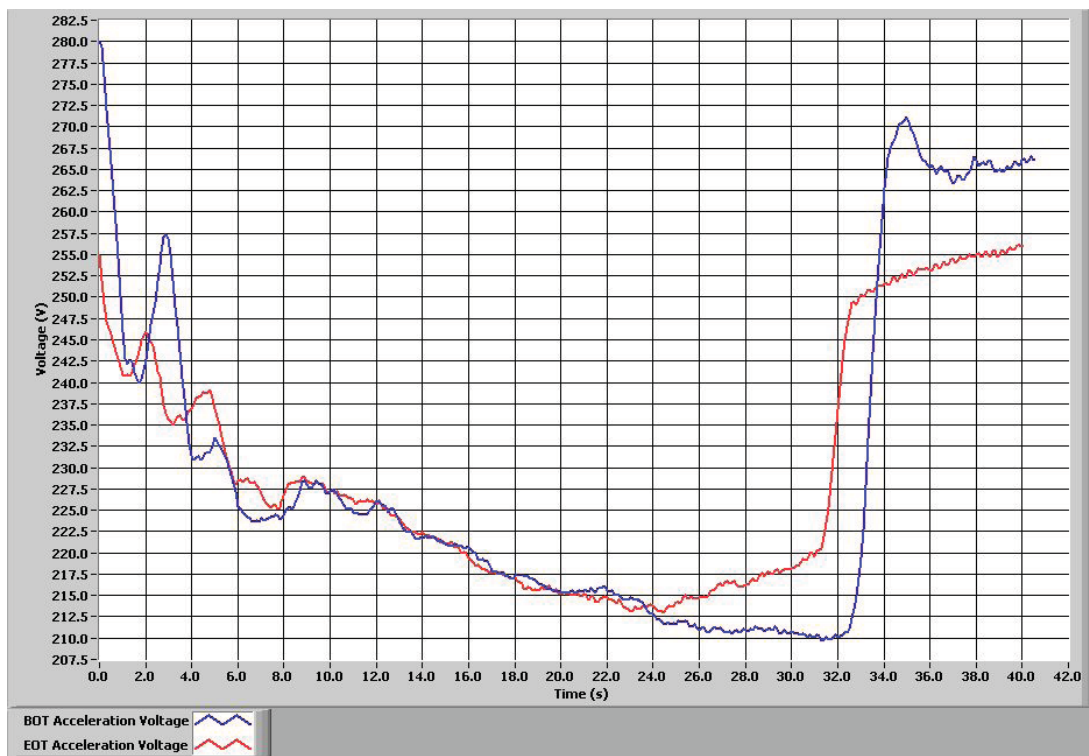


Figure 9. Battery voltage versus time.

Figure 10 shows battery current versus time during the 1-mile acceleration test at BOT and EOT. This graph also is the basis for determining the discharged capacity during the test run. Lastly, the power results in Figure 8 can be obtained by simply multiplying the voltage values from Figure 9 by the current values in Figure 10.

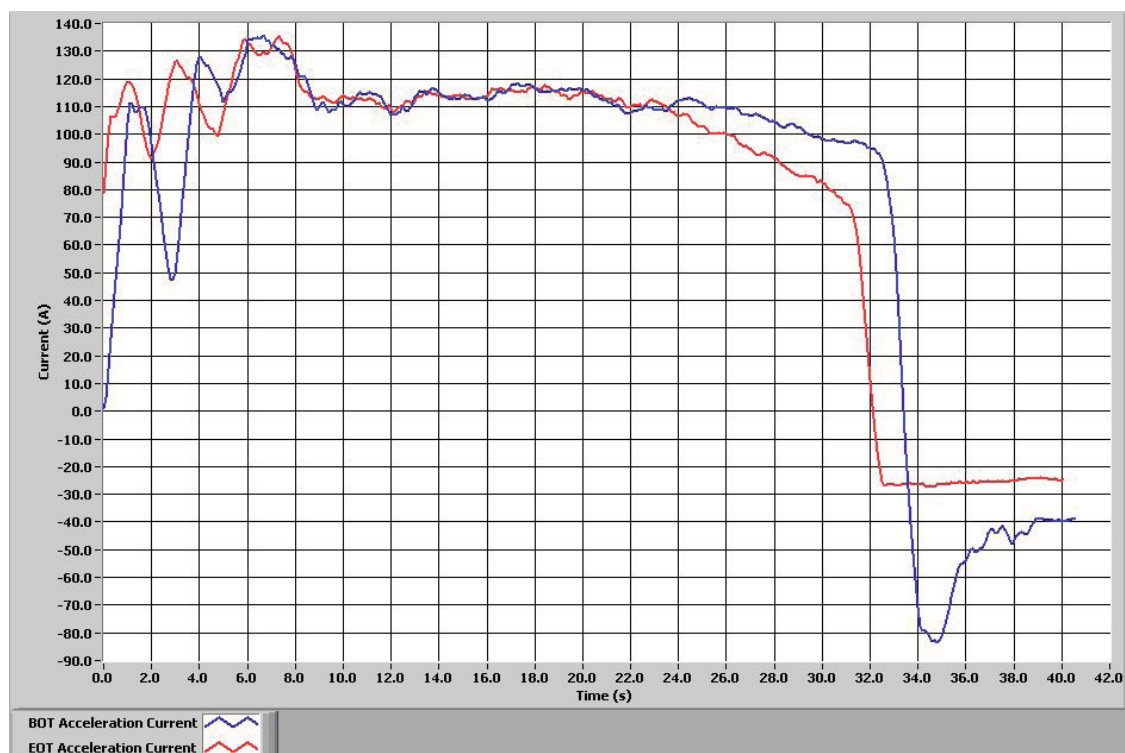


Figure 10. Battery current versus time.

## 1.4 Fuel Economy Test Results

Battery performance results from testing conducted on an electric dynamometer (Urban Dynamometer Drive Schedule<sup>5</sup>) at BOT and average fuel economy recorded while the vehicle was operating in an on-road fleet<sup>6</sup> approximately 53% in city and 47% in highway<sup>7</sup> types of routes are summarized as follows:

Peak Discharge Power (kW)	37.6	Maximum Charge Pack Voltage (V)	304.5
Peak Regenerative Power (kW)	29.4	Maximum Charge Cell Voltage (V)	1.49
Measured Discharge Capacity (Ah)	8.69	Minimum Discharge Pack Voltage (V)	210.3
Measured Regenerative Capacity (Ah)	9.16	Minimum Discharge Cell Voltage (V)	1.03
Discharge/Charge Ratio	0.949	Average Fuel Economy (mpg)	29.9

<sup>5</sup> Urban Dynamometer Drive Schedule was performed as defined by the Environmental Protection Agency. The definition of the Urban Dynamometer Drive Schedule can be found at <http://www.epa.gov/nvfe/methods/uddsdds.gif>.

<sup>6</sup> On-road fleet testing is performed by the Electric Transportation Engineering Corporation (in conjuncture with JP Morgan Chase Bank's courier services). The vehicles are driven a combination of city and highway routes by several different drivers to expedite the amount mileage needed to reach EOT.

<sup>7</sup> The type of on-road driving routes for the two Altima HEVs is summarized as 53% city and 47% highway in the Advanced Vehicle Testing Activity's Final Fleet Testing Results fact sheet that can be found at <http://avt.inel.gov/pdf/hev/finalfact2007NissanAltima.pdf>.

Figure 11 illustrates the vehicle motive power histogram throughout one of the tested drive schedules. Motive power is a calculated value representing instantaneous theoretical positive wheel power required to complete the urban drive cycle. The x-axis of the bar graph represents the center point of a particular power level. For example, the first bar graph with a power of 2 represents all power values between 1 and 3 kW (lower boundary is inclusive and upper boundary is non-inclusive). The corresponding y-value at this power level is the percent time at this particular power band throughout the entire drive cycle (regeneration power and zero power non-inclusive). Directly beside the vehicle motive power value is the same analysis performed on the battery output power for a particular power band. While the occurrences of vehicle motive power and battery discharge power in each power band in Figure 11 are not necessarily coincident in time, it is possible to conclude from the overall shapes of the distributions that the battery provides a substantial fraction of the required vehicle motive power. Efficiency losses between the battery and wheels are not included in this figure, and naturally reduce the contribution of the battery to vehicle motive power.

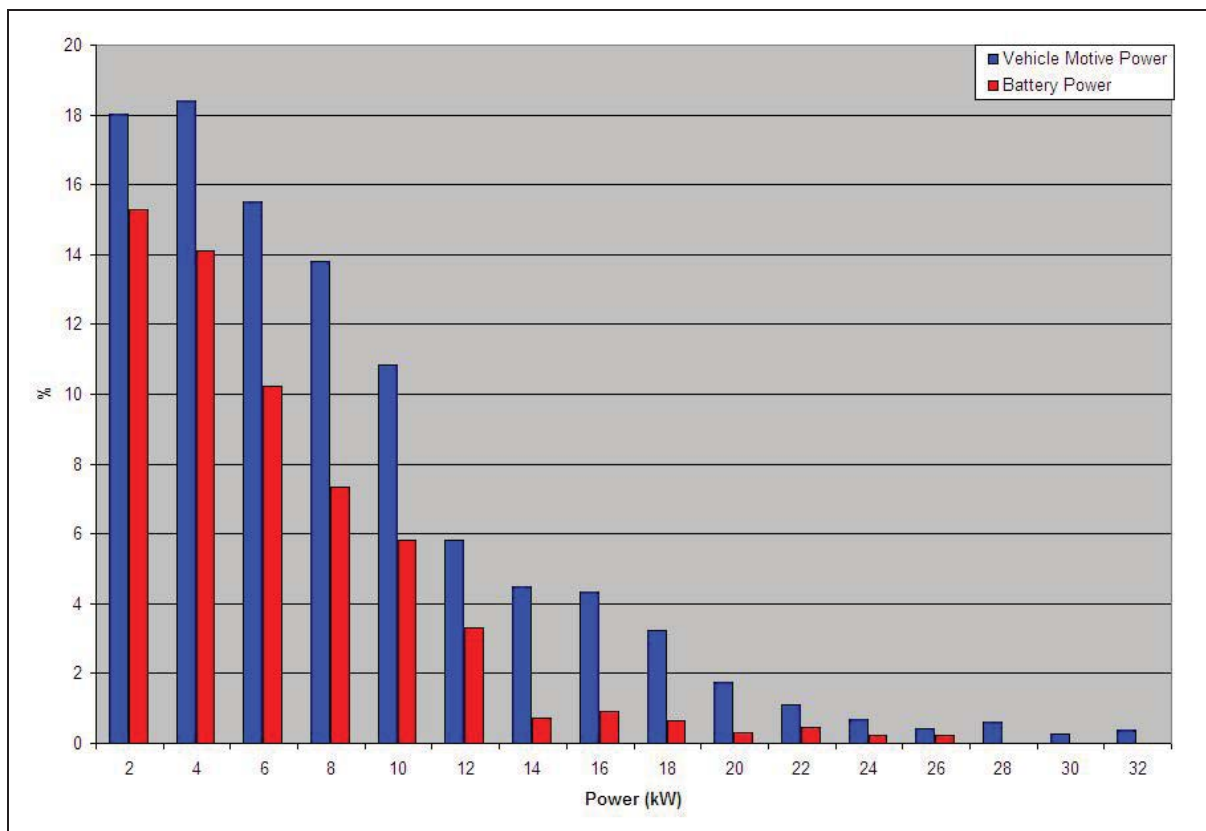


Figure 11. Percent time at motive power level.

Figure 12 illustrates the vehicle regenerative braking power histogram throughout one of the tested urban drive cycles. Regenerative braking power is a calculated value that represents the theoretical negative wheel power required to decelerate the vehicle on the urban drive cycle. Figure 12 compares the distributions of available braking power and actual battery charge power. The overall shapes of the distributions indicate that the battery captures a substantial fraction of the vehicle power available during braking.

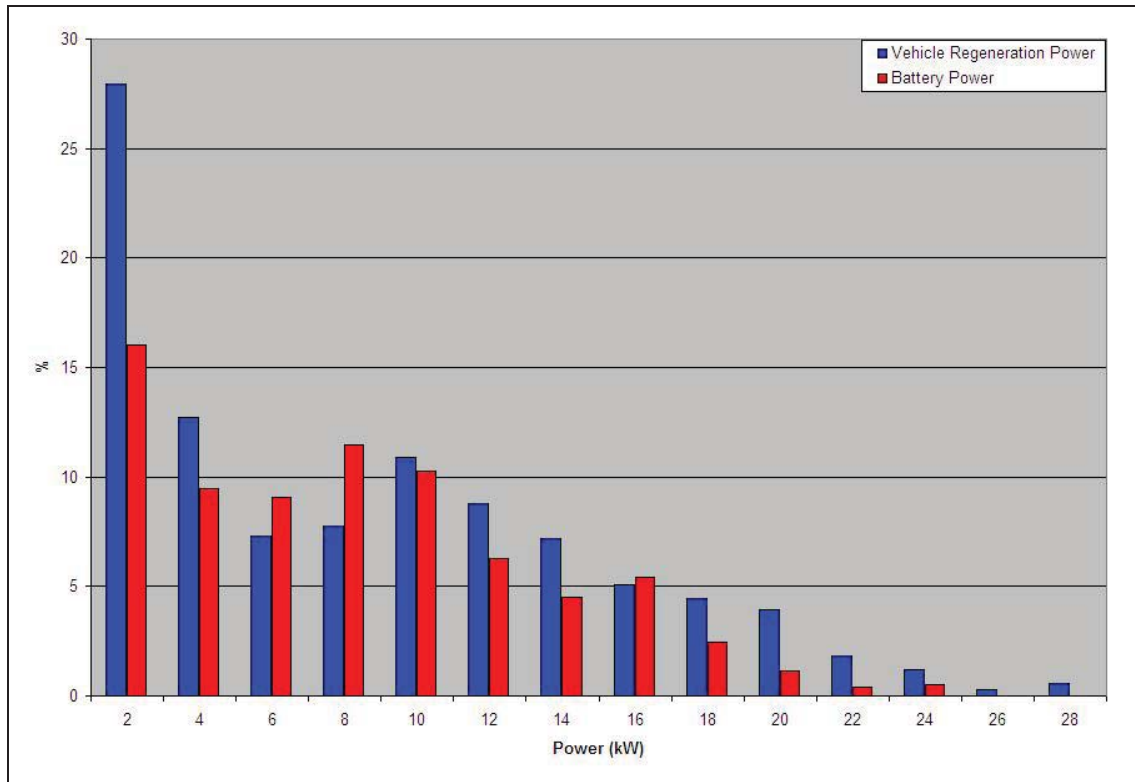


Figure 12. Percent time at regenerative power level.

Figure 13 is a pie chart showing the sources of battery charging. The chart shows the percent of battery charging time when the battery experienced ideal versus non-ideal charging. Ideal charging refers to regenerative braking during deceleration where the deceleration force is in excess of the vehicle drag forces. On a non-hybrid vehicle, this would require the brakes to be pressed and excess energy would be converted to heat at the brakes. In a hybrid vehicle, a portion of this excess energy can be captured and stored for later use. Because this charge method is capturing energy that is normally lost, the charge event is considered ideal. The second charging type is called non-ideal because the vehicle charges the battery by the use of the internal combustion engine and generator. This can happen during acceleration, cruising, or deceleration when excess engine load is available or when the battery state of charge has dropped below a minimum level. This is non-ideal because the internal combustion engine charges the battery. In some cases, this can be beneficial for overall fuel economy by maintaining optimum load on the engine to increase efficiency; however, it is still considered non-ideal because gasoline is used to charge the batteries.

Figure 14 is a pie graph that shows the percent of vehicle regeneration energy captured in the battery. By calculating total vehicle energy available at the wheels during an ideal charge event and performing a direct comparison of energy into the battery, the percent energy into the battery can be calculated. In addition, system losses can be determined as the difference between energy available from the vehicle and energy into the battery. Although each component of loss cannot be determined, the total system loss can be measured by this method. Also, it should be noted that this calculation does not take into account losses at the battery due to charge inefficiency. This measurement is merely a calculation of how

efficiently the vehicle charging mechanism is able to capture regeneration energy during an ideal charge event.<sup>8</sup>

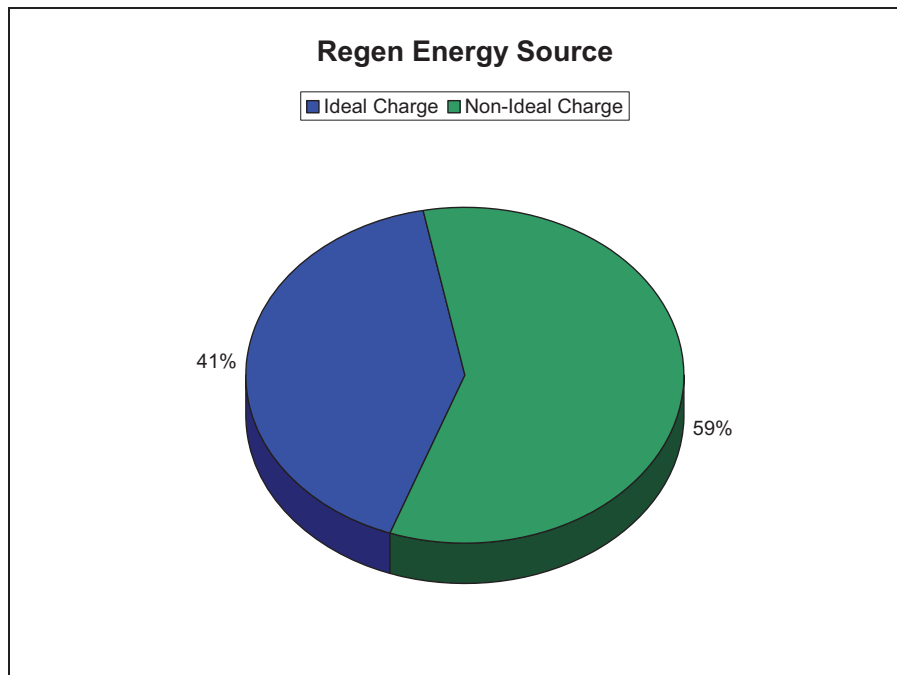


Figure 13. Regenerative energy source comparison.

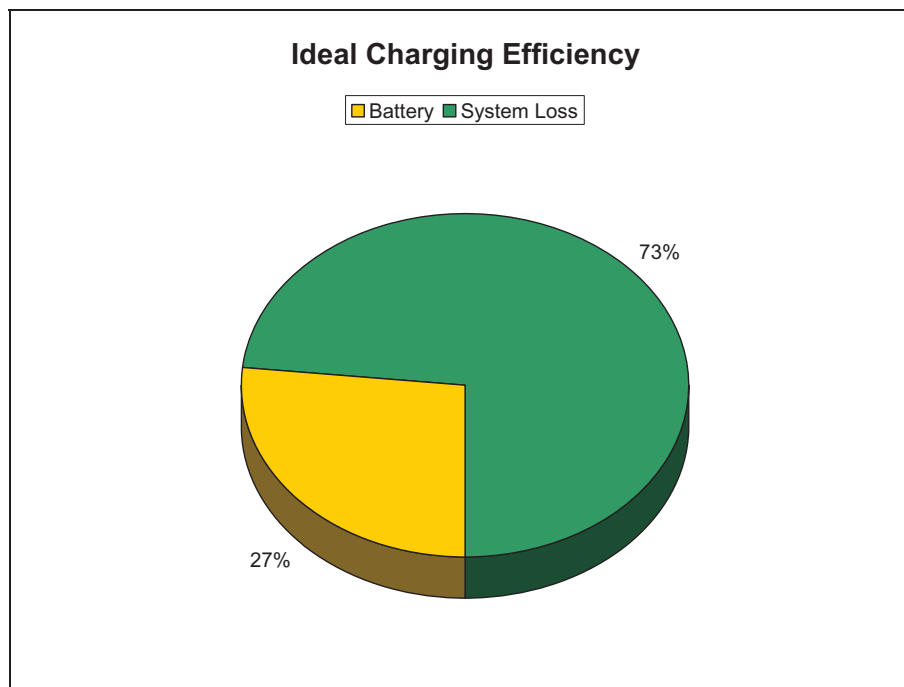


Figure 14. Ideal regenerative energy destination.

---

<sup>8</sup> Results shown in Figures 13 and 14 do not consider the case when non-ideal engine charging occurs during a regenerative braking event. The impact of this case during the UDDS test is assumed to be negligible.

Figure 15 presents the combined monthly fuel economy and cumulative fuel economy for the two Altima HEVs that were on-road accelerated tested. The monthly fuel economy is derived from the amount of fuel consumed, based on fleet fueling records, and the distance traveled, based on vehicle odometer readings, for each vehicle within that month. The cumulative fuel economy is a running total of each month's fuel consumption and distance traveled. While there is no way, with only this data, to directly correlate vehicle fuel economy to operation of the battery pack, it can be seen from Figure 15 that fuel economy for these vehicles remained relatively unchanged over the last 18 months of testing, even with the battery degradation demonstrated by the EOT battery test.

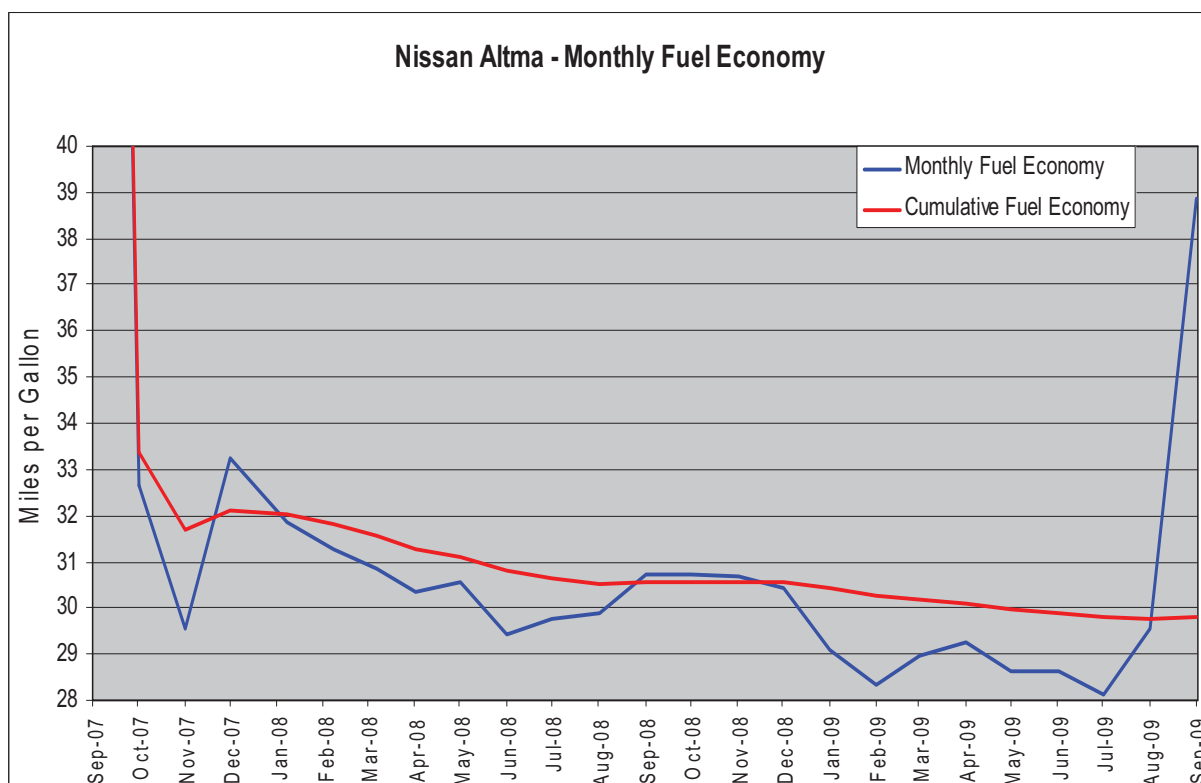


Figure 15. Monthly and cumulative fuel economy.

## 1.5 Conclusion

The Nissan Altima number 2351 experienced a 2.1% degradation in battery capacity and stayed above the DOE performance targets for all aspects of the HPPC test over the duration of 160,000 miles of accelerated durability testing.

## Appendix A

### Vehicle Specifications and Test Results Summary

Vehicle Specifications	Battery Specifications
Manufacturer: Nissan Model: Altima Year: 2007 Number of Motors <sup>a</sup> : 1 Motor Power Rating <sup>b</sup> : 105 kW VIN #: 1N4CL21E87C172351	Manufacturer: Panasonic EV Battery Type: Nickel Metal Hydride Rated Capacity: 6.5 Ahr (C/3 rate) Rated Power: 216 W (per cell) Nominal Pack Voltage: 244.8 VDC Nominal Cell Voltage: 1.2 V Number of Cells: 204
Beginning-of-Test Vehicle Baseline Performance Test Results <sup>c</sup>	
Acceleration Test	Fuel Economy Test
Peak Discharge Power @ 10 seconds <sup>d</sup> : 25.8 kW Peak Discharge Power @ 1 second <sup>d</sup> : 29.4 kW Energy Discharged @ 1 mile <sup>e</sup> : 189 Whr Capacity Discharged @ 1 mile <sup>e</sup> : 0.88 Ahr Minimum Discharge Pack Voltage: 209.8 VDC Minimum Discharge Cell Voltage: 1.03 V	Peak Discharge Power: 37.62 kW Peak Charge Power: 24.35 kW Measured Capacity Discharged <sup>f</sup> : 8.69 Ahr Measured Capacity Regenerated <sup>f</sup> : 9.16 Ahr Battery Discharge/Charge Ratio <sup>g</sup> : 0.949 Maximum Charge Pack Voltage: 304.5 VDC Maximum Charge Cell Voltage: 1.49 Vpc Minimum Discharge Pack Voltage: 210.3 VDC Minimum Discharge Cell Voltage: 1.03 Vpc
End-of-Test Vehicle Baseline Performance Test Results	
Acceleration Test	
Peak Discharge Power @ 10 seconds <sup>d</sup> : 26.4 kW Peak Discharge Power @ 1 second <sup>d</sup> : 29.3 kW Energy Discharged @ 1 mile <sup>e</sup> : 201 Whr Capacity Discharged @ 1 mile <sup>e</sup> : 0.91 Ahr Minimum Discharge Pack Voltage: 213.0 VDC Minimum Discharge Cell Voltage: 1.04 V	
Battery Beginning-of-Test Laboratory Test Results	
Hybrid Pulse Power Characterization Test	Static Capacity Test
Peak Pulse Discharge Power @ 10 seconds <sup>h</sup> : 25.7 kW Peak Pulse Discharge Power @ 1 second <sup>h</sup> : 34.4 kW Peak Pulse Charge Power @ 10 seconds <sup>h</sup> : 23.4 kW Peak Pulse Charge Power @ 1 second <sup>h</sup> : 32.2 kW Maximum Cell Charge Voltage: 1.5 V Minimum Cell Discharge Voltage: 1.0 V	Measured Average Capacity: 5.74 Ahr Measured Average Energy Capacity: 1,480 Whr Vehicle Odometer: 413 miles Date of Test: September 20, 2007
Battery End-of-Test Laboratory Test Results	
Hybrid Pulse Power Characterization Test	Static Capacity Test
Peak Pulse Discharge Power @ 10 seconds <sup>h</sup> : 25.9 kW Peak Pulse Discharge Power @ 1 second <sup>h</sup> : 35.7 kW Peak Pulse Charge Power @ 10 seconds <sup>h</sup> : 24.1 kW Peak Pulse Charge Power @ 1 second <sup>h</sup> : 36.9 kW Maximum Cell Charge Voltage: 1.5 V Minimum Cell Discharge Voltage: 1.0 V	Measured Average Capacity: 5.62 Ahr Measured Average Energy Capacity: 1,446 Whr Vehicle Odometer: 161,111 miles Date of Test: August 14th, 2009

Degradation of Battery Over Test Period <sup>i</sup>	
Hybrid Pulse Power Characterization Test	Static Capacity Test
Peak Pulse Discharge Power @ 10 seconds <sup>h</sup> : 0.2 kW (0.7%)	Measured Average Capacity: 0.12 Ahr (2.1%)
Peak Pulse Discharge Power @ 1 second <sup>h</sup> : -1.2 kW (-3.5%)	Measured Average Energy Capacity: 30 Whr (2.3%)
Peak Pulse Charge Power @ 10 seconds <sup>h</sup> : -0.7 kW (-14%)	
Peak Pulse Charge Power @ 1 second <sup>h</sup> : -4.7 kW (-15%)	
<b>Analysis Notes:</b> <ul style="list-style-type: none"> <li>a. Motor refers to any motor capable of supplying traction power.</li> <li>b. Motor power rating refers to the manufacturer's peak power rating for the motor(s) supplying traction power.</li> <li>c. Vehicle test results are derived from baseline testing of Altima VIN 2351.</li> <li>d. The peak power at a specified duration is the average power value over a specified interval beginning at the measured maximum power of the pulse.</li> <li>e. The capacity\energy value is defined as the net value over a 1-mile, full-throttle acceleration test.</li> <li>f. Cumulative capacity measurement over two hot start urban drive cycles and two hot start highway drive cycles.</li> <li>g. Ratio is calculated as the ratio of measured capacity discharge to measured capacity regenerated. The initial and final states of charge are not specifically known, but are controlled by the battery management system and are within its normal range.</li> <li>h. Calculated value based on selected battery voltage limits and at 50% SOC. of measured capacity at the time of testing.</li> <li>i. All values are the degradation or difference in the battery from initial laboratory test to final laboratory test.</li> </ul>	