

2009

Hanford Site Annual Illness and Injury Surveillance Report



Hanford Site

2009 Illness and Injury Surveillance Report

Questions or comments about this report or the Illness and Injury Surveillance Program (IISP) may be directed to:

E-mail:

Dr. Cliff Strader at [**cliff.strader@hq.doe.gov**](mailto:cliff.strader@hq.doe.gov)
or Dr. Bonnie Richter at [**bonnie.richter@hq.doe.gov**](mailto:bonnie.richter@hq.doe.gov)

or direct letters to:

Mail Stop HS-13 / GTN Building
U.S. Department of Energy
1000 Independence Avenue, S.W.
Washington, DC 20585-0270

Additional information about the Department of Energy's Office of Illness and Injury Prevention Programs, the IISP, and annual reports for DOE sites participating in this program can be found at:

<http://www.hss.energy.gov/healthsafety/WSHP/epi/surv/>



ACKNOWLEDGEMENT

LifeART images copyright 2000 Lippincott Williams & Wilkins. All rights reserved.

This document was produced under contract number DE-AC05-06OR23100 between the
U.S. Department of Energy and Oak Ridge Associated Universities.

Hanford Site 2009 Illness and Injury Surveillance Report

At A Glance

The Hanford work force increased 18 percent, from 12,158 employees in 2008 to 14,356 employees in 2009. The average age of the work force decreased by 1 year for women and 2 years for men from 2008 to 2009, as a result of hiring workers less than 30 years of age. Overall, the work force at the DOE Illness and Injury Surveillance Program (IISP) sites is aging, so this decrease in average age is unusual.

Women reported 441 diagnoses and men reported 1,148 diagnoses in 2009. The number of reported diagnoses was stable from 2008 to 2009.

The rates for all diagnoses combined decreased 7 percent among women and 14 percent among men from 2008 to 2009. This decrease was not due to any particular diagnostic category. The rates for women have been lower than those of men since 2005. This is contrary to what we saw for all IISP sites from 1999 to 2008.

Sixty-two workers reported 71 cancer diagnoses in 2009. Six of these workers reported a cancer diagnosis in previous years. The rate at which workers reported cancer diagnoses tripled from 2003 to 2007, but a decrease in the rate occurred from 2007 to 2008 and remained the same for 2009.

The overall rate of prostate cancer diagnoses, which is usually the most frequently reported cancer among men each year, has been fairly steady since 2004. No diagnoses for prostate cancer were reported in 2003. Over the 5-year period beginning in 2005, Crafts workers, who made up 9 percent of the work force, accounted for 17 percent of the workers who reported prostate cancer. This trend may result from the fact that the Crafts group is the occupational group with the highest average age and the possibility that this group is more compliant with the policy to report back through Occupational Medicine after an absence.

Among women, breast cancer made up 45 percent (5 diagnoses) of the 11 cancer diagnoses reported in 2009. Five women reported breast cancer in 2009. Women reporting breast cancer since 2005 have been in the Professional, Administrative Support, and Technical Support occupational groups, which made up 91 percent of the work force. Seventy-seven percent of the women were aged 50+. The distribution of the women reporting breast cancer in 2009 was similar to the occupational and age distributions observed since 2004.

Hanford reported 248 definite sentinel health event diagnoses in 2009. Musculoskeletal conditions and injuries accounted for 39 percent and 38 percent of the definite SHEO diagnoses, respectively. The number of definite sentinel health event diagnoses has increased since 2004, when 225 SHEO diagnoses were recorded. In 2009, 86 percent of the SHEOs were reported among workers in the Technical Support, Service, Security and Fire, Crafts, and Line Operators occupational categories, which comprised 34 percent of the work force.

There were 18 definite SHEO diagnoses for carpal tunnel syndrome, reported by 17 workers (11 men and 6 women). Fifty-three percent of the workers reporting carpal tunnel syndrome were from the Technical Support and Line Operators occupational groups. In total, these 18 diagnoses were responsible for 1,382 days absent.

The number of OSHA-recordable events decreased 11 percent, from 153 events in 2008 to 136 events in 2009. The rate of OSHA events has fluctuated since 2004 when the rate was 1.4 per 100 workers. The 2009 rate of 0.9 per 100 workers was lower than the 2008 rate of 1.3 per 100 workers. Collectively, the IISP sites have experienced a consistent reduction in the rate of OSHA-recordable events since the late 1990s.

In 2009, Crafts workers had the highest rate of OSHA-recordable events among women and Service workers had the highest rate among men. Since 2006, the rate of OSHA events has been increasing among men in the Service and Crafts groups. In contrast, the OSHA rate among male Line Operators has been low and stable since 2006, after having the highest rate in 2003. Similar trends were seen for women in these occupational groups, although the fluctuations in rates from year to year were greater because of the small number of women in these groups.

All but 1 OSHA event (135 OSHA events) were the result of an accident. Overexertion and strenuous movements (24 percent), being struck by an object (22 percent), and falls (19 percent) accounted for 65 percent of accidents among men. Among women, overexertion and strenuous movements (46 percent) and falls (27 percent) were the most common accidents.

The Hanford Site Work Force – 2009

The Work Force by Gender and Age 1

The Work Force by Gender and Job
Category 1

Number and Length of Absences

Absence Rate by Gender and Age 2

Number of Days Absent by
Gender and Age 2

Absence Rate by Job Category
and Gender 3

Average Duration of Absence by
Job Category and Gender 3

Diagnostic Categories

Number of Diagnoses and Lost Calendar
Days by Diagnostic Category
(Categorized by ICD-9-CM) and Gender 4

Common Diagnoses Among Female
Workers in 2009 5

Common Diagnoses Among Male
Workers in 2009 6

Number of Most Frequently Reported
Diagnoses by Job Category and Gender 7

Rates of Disease Occurrence

Rates for All Illnesses and Injuries Combined
by Job Category, Gender, and Age 8

Rates for Selected Diagnostic Categories
by Job Category, Gender, and Age 8

Time Trends

Age-Adjusted Rates for All Diagnoses
Combined Among Women and Men from
2003 to 2009 10

Age-Adjusted Rates for Selected Diagnostic
Categories Among Women and Men from
2003 to 2009 11

Age-Adjusted Rates for All Diagnoses
Combined Among Women and Men by Job
Category from 2003 to 2009 12

Sentinel Health Events for Occupations (SHEOs)

Characteristics of SHEOs by Gender 13

SHEO Diagnoses by Gender 13

Occupational Safety and Health Administration (OSHA)-Recordable Events

OSHA-Recordable Events by Gender
and Age 14

OSHA-Recordable Events by Job
Category and Gender 14

Diagnostic and Accident Categories for OSHA-Recordable Events

OSHA-Recordable Diagnoses by
Diagnostic Category and Gender 15

OSHA-Recordable Accidents by Type
and Gender 16

Rates of OSHA-Recordable Events

OSHA-Recordable Rates by Age and Job
Categories Among Women, All Diagnoses
Combined 17

OSHA-Recordable Rates by Age and Job
Categories Among Men, All Diagnoses
Combined 17

Time Trends for OSHA-Recordable Events

Age-Adjusted Rates for All OSHA-Recordable
Diagnoses Combined Among Women and Men
by Job Category from 2003 to 2009 18

Appendices

Appendices A-W 20

The Hanford Site Work Force - 2009

Figure 1. The Work Force by Gender and Age

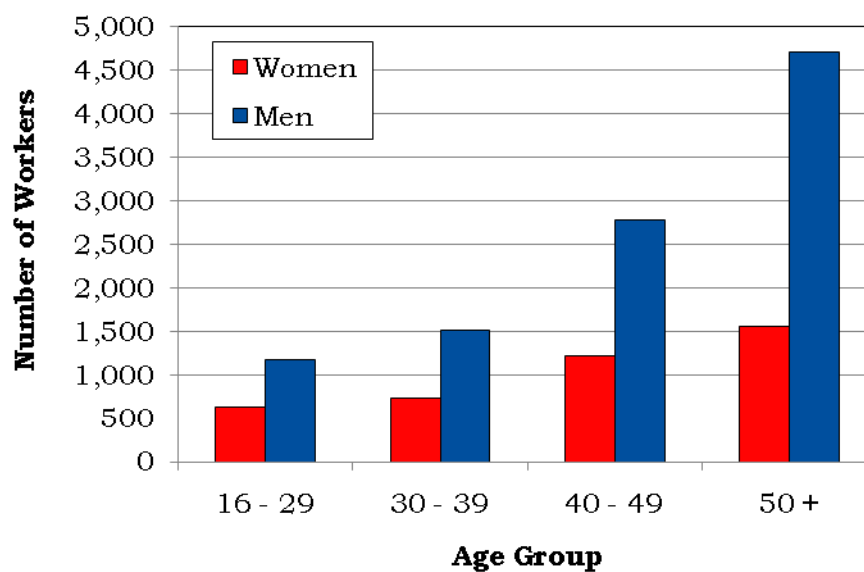


Figure 2. The Work Force by Gender and Job Category

Job Category	Women	Men
Professional	1,734 41%	5,055 50%
Administrative Support	1,688 40%	1,006 10%
Technical Support	401 10%	1,064 10%
Service	112 3%	564 6%
Security and Fire	67 2%	452 4%
Crafts	27 1%	1,005 10%
Line Operators	145 3%	1,036 10%
Total	4,174 100%	10,182 100%

Number and Length of Absences

Figure 3. Absence Rate by Gender and Age

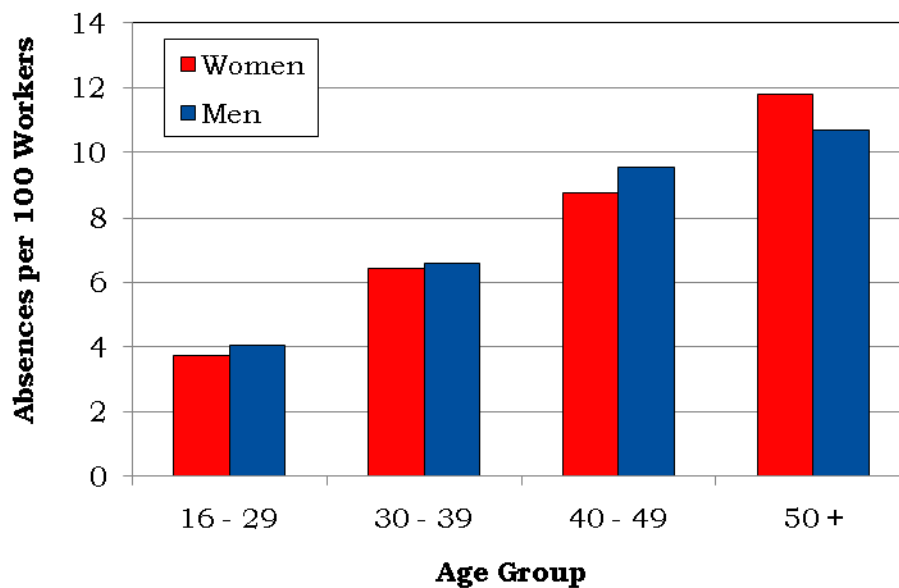
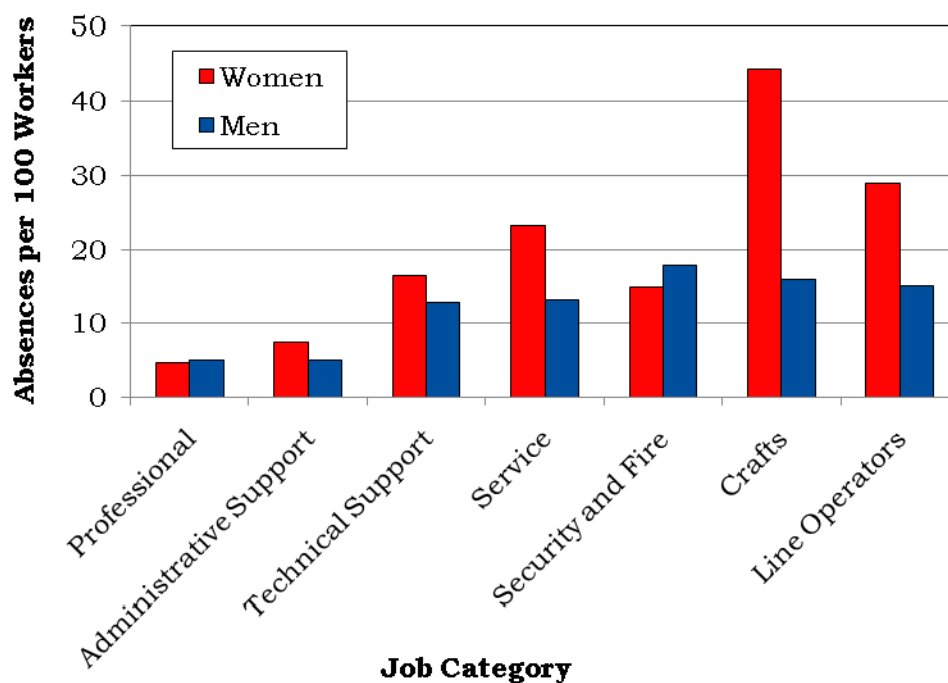
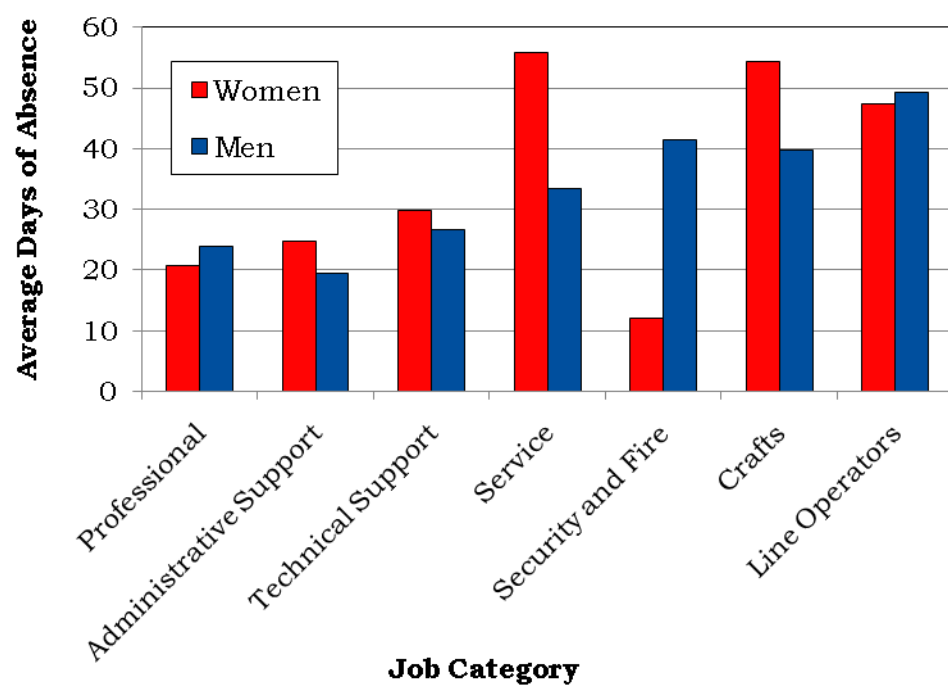


Figure 4. Number of Days Absent by Gender and Age

Gender	Age	Number of Absences	Number of Days Absent	
			Total	Average
Women*	16-29	24	303	13
	30-39	48	1,119	23
	40-49	107	4,061	38
	50+	185	5,505	30
	Total	364	10,988	30
Men	16-29	48	1,854	39
	30-39	100	2,647	26
	40-49	265	8,900	34
	50+	502	17,271	34
	Total	915	30,672	34

*Normal pregnancies were excluded from absences for women.

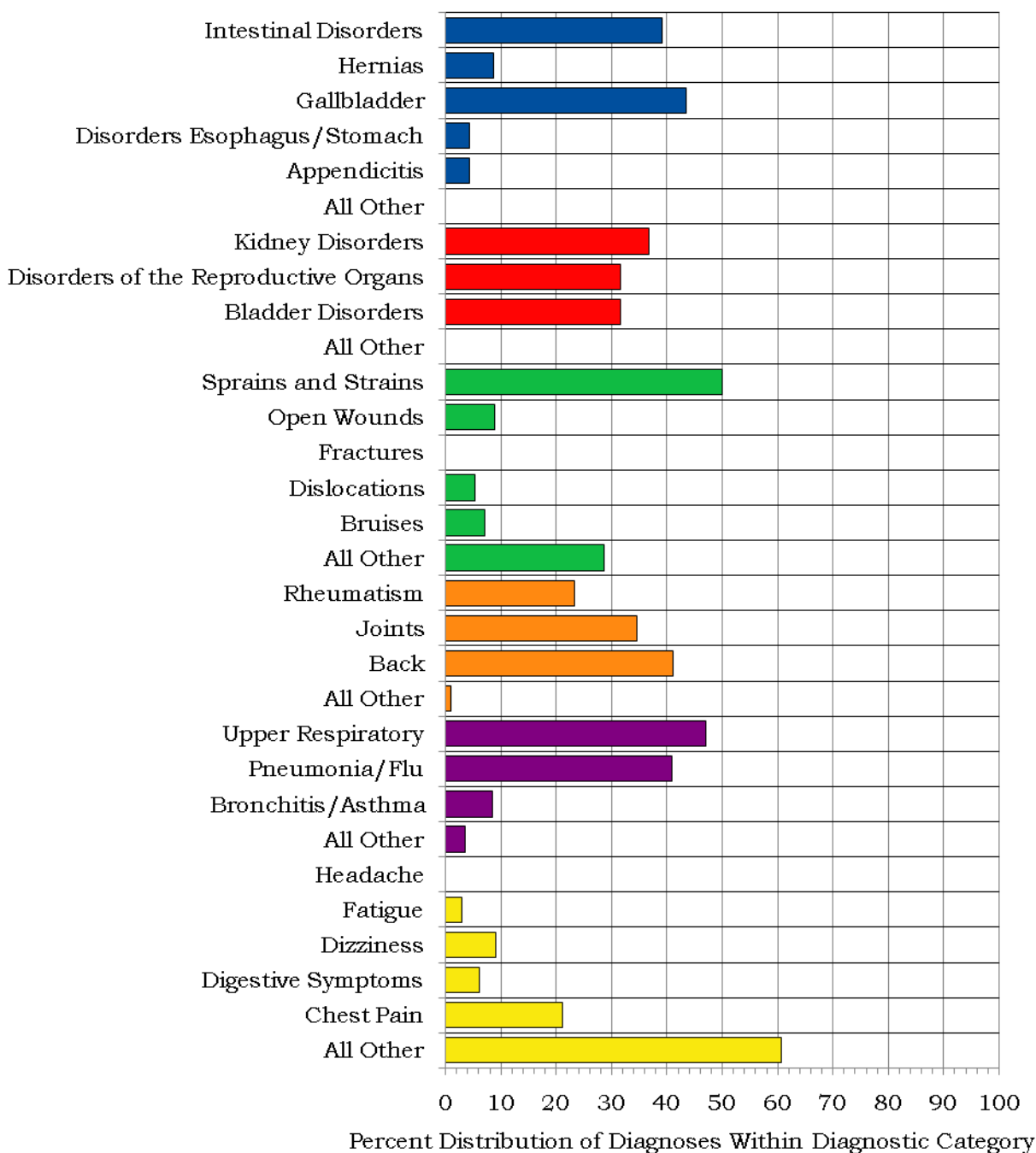
Figure 5. Absence Rate by Job Category and Gender**Figure 6. Average Duration of Absence by Job Category and Gender**

Diagnostic Categories

Figure 7. Number of Diagnoses and Lost Calendar Days by Diagnostic Category (Categorized by ICD-9-CM) and Gender

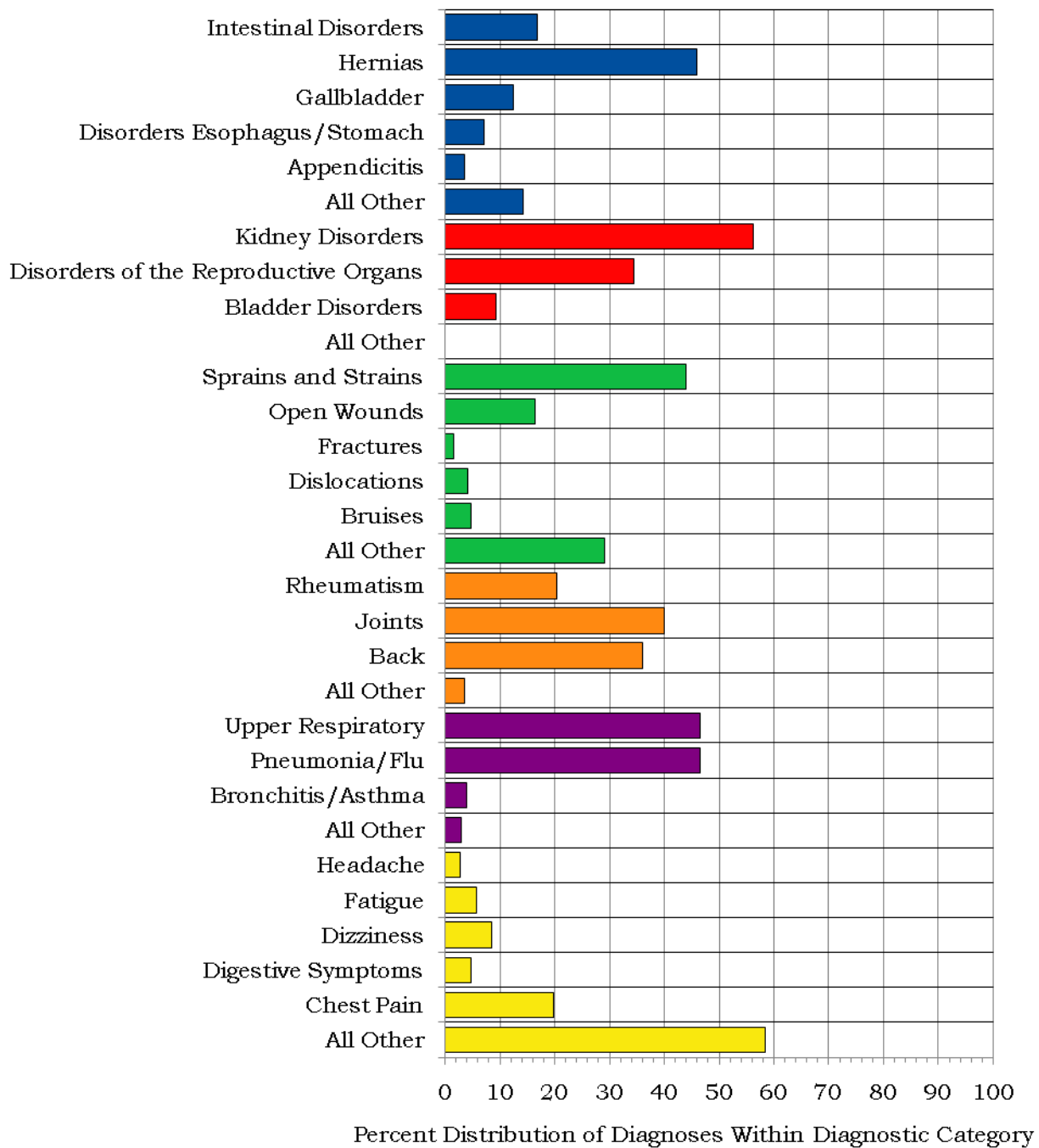
Diagnostic Category	Women		Men	
	Number of Diagnoses	Number of Lost Calendar Days	Number of Diagnoses	Number of Lost Calendar Days
Benign Growths	9	384	29	512
Blood	0	0	0	0
Cancer	11	280	60	2,520
Digestive	23	614	113	2,738
Endocrine / Metabolic	8	128	40	1,056
Existing Birth Condition	0	0	1	1
Genitourinary	19	494	32	482
Heart/Circulatory	17	333	105	3,000
Infections/Parasites	11	210	24	696
Injury	56	1,721	189	5,601
Miscarriage	0	0	NA	NA
Musculoskeletal	107	3,535	225	9,466
Nervous System	38	2,051	72	6,096
Psychological	20	1,568	23	1,902
Respiratory	83	945	99	1,355
Skin	6	57	30	629
Unspecified Symptoms	33	584	106	2,258

Note: Lost calendar days for each absence are counted more than once when multiple diagnoses occur in different diagnostic categories for the same absence.

Figure 8. Common Diagnoses Among Female Workers in 2009

Digestive, 23 Diagnoses	Musculoskeletal, 107 Diagnoses
Genitourinary, 19 Diagnoses	Respiratory, 83 Diagnoses
Injury, 56 Diagnoses	Unspecified Symptoms, 33 Diagnoses

Figure 9. Common Diagnoses Among Male Workers in 2009



■ Digestive, 113 Diagnoses	■ Musculoskeletal, 225 Diagnoses
■ Genitourinary, 32 Diagnoses	■ Respiratory, 99 Diagnoses
■ Injury, 189 Diagnoses	■ Unspecified Symptoms, 106 Diagnoses

Figure 10. Number of Most Frequently Reported Diagnoses by Job Category and Gender

Job Category	Men		Women	
Professional	Musculoskeletal	51	Musculoskeletal	32
	Digestive	44	Respiratory	16
	Heart/Circulatory	41	Nervous System	14
Administrative Support	Digestive	10	Respiratory	29
	Unspecified Symptoms	10	Injury	24
	Heart/Circulatory	8	Musculoskeletal	22
Technical Support	Injury	27	Musculoskeletal	19
	Musculoskeletal	21	Respiratory	18
	Respiratory	20	Injury	14
Service	Injury	24	Musculoskeletal	11
	Musculoskeletal	23	Respiratory	9
	Unspecified Symptoms	11	Unspecified Symptoms	4
Security and Fire	Musculoskeletal	34	Respiratory	4
	Injury	27	Psychological	2
	Respiratory	8	Digestive	1
			Injury	1
			Unspecified Symptoms	1
			Skin	1
Crafts	Musculoskeletal	50	Musculoskeletal	8
	Injury	32	Respiratory	2
	Digestive	25	Psychological	2
	Respiratory	25		
Line Operators	Musculoskeletal	41	Musculoskeletal	15
	Injury	35	Injury	9
	Heart/Circulatory	26	Respiratory	5
			Digestive	5
			Unspecified Symptoms	5

Rates of Disease Occurrence

Figure 11. Rates for All Illnesses and Injuries Combined by Job Category, Gender, and Age

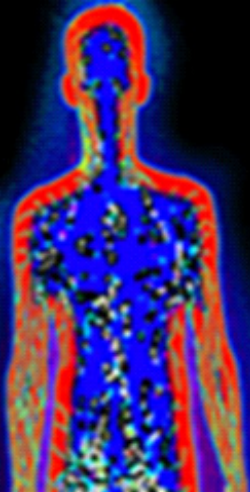
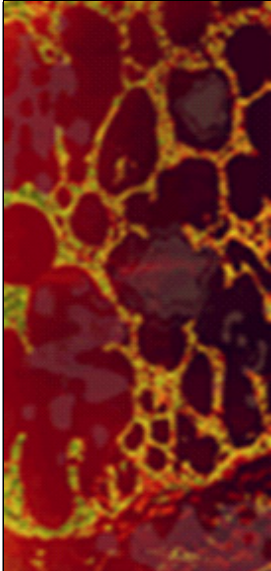
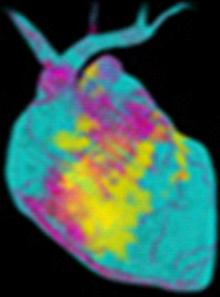
All Illnesses & Injuries Combined	Rate per 1,000			
	Job Category	Age	Men	Women
	Professional	<50	45	43
		50+	78	81
	Administrative Support	<50	40	71
		50+	103	125
	Technical Support	<50	119	162
		50+	232	283
	Service	<50	134	224
		50+	190	333
	Security and Fire	<50	213	132
		50+	231	172
	Crafts	<50	147	200
		50+	255	917
	Line Operators	<50	179	369
		50+	238	377

Figure 12. Rates for Selected Diagnostic Categories by Job Category, Gender, and Age

Cancer	Rate per 1,000			
	Job Category	Age	Men	Women
	Professional	<50	3	2
		50+	10	2
	Administrative Support	<50	2	1
		50+	14	6
	Technical Support	<50	3	7
		50+	8	0
	Service	<50	0	0
		50+	9	19
	Security and Fire	<50	0	0
		50+	19	0
	Crafts	<50	2	0
		50+	6	0
	Line Operators	<50	6	0
		50+	5	0

**Figure 12. Rates for Selected Diagnostic Categories
by Job Category, Gender, and Age (Continued)**

Heart/Circulatory	Rate per 1,000			
	Job Category	Age	Men	Women
	Professional	<50	2	0
		50+	14	5
	Administrative Support	<50	4	6
		50+	14	6
	Technical Support	<50	13	7
		50+	25	10
	Service	<50	3	0
		50+	14	0
	Security and Fire	<50	0	0
		50+	6	0
	Crafts	<50	4	0
		50+	10	0
	Line Operators	<50	19	12
		50+	33	0

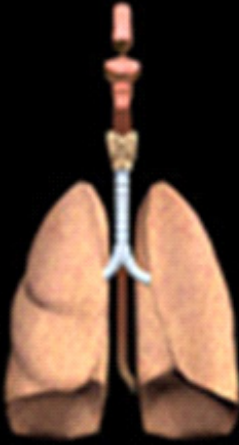

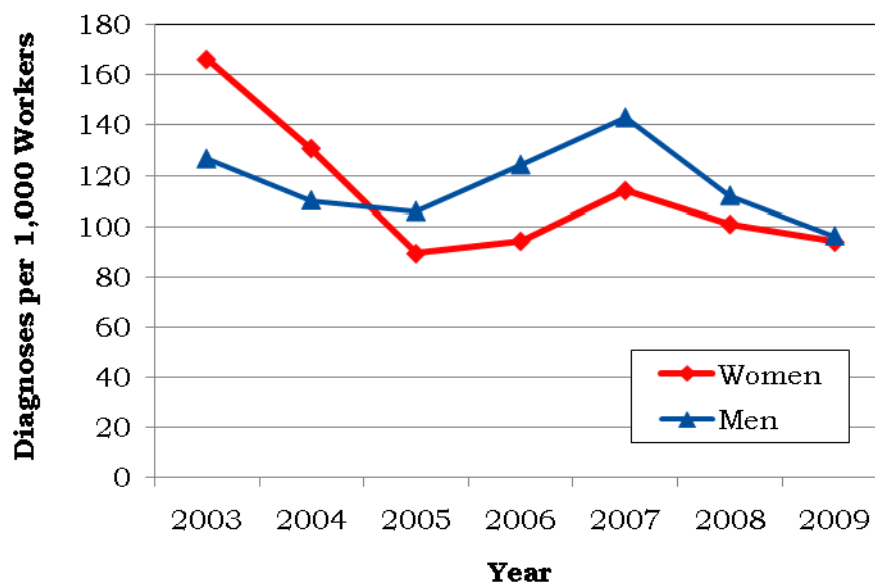
Respiratory	Rate per 1,000			
	Job Category	Age	Men	Women
	Professional	<50	4	10
		50+	2	8
	Administrative Support	<50	4	10
		50+	0	27
	Technical Support	<50	18	30
		50+	20	91
	Service	<50	12	69
		50+	18	93
	Security and Fire	<50	24	26
		50+	6	103
	Crafts	<50	26	67
		50+	24	83
	Line Operators	<50	15	12
		50+	24	66

Figure 12. Rates for Selected Diagnostic Categories by Job Category, Gender, and Age (Continued)

Injury	Rate per 1,000			
	Job Category	Age	Men	Women
	Professional	<50	5	4
		50+	10	5
	Administrative Support	<50	2	12
		50+	14	17
	Technical Support	<50	23	40
		50+	31	20
	Service	<50	41	0
		50+	45	0
	Security and Fire	<50	71	0
		50+	38	34
	Crafts	<50	34	0
		50+	30	83
	Line Operators	<50	31	48
		50+	38	82

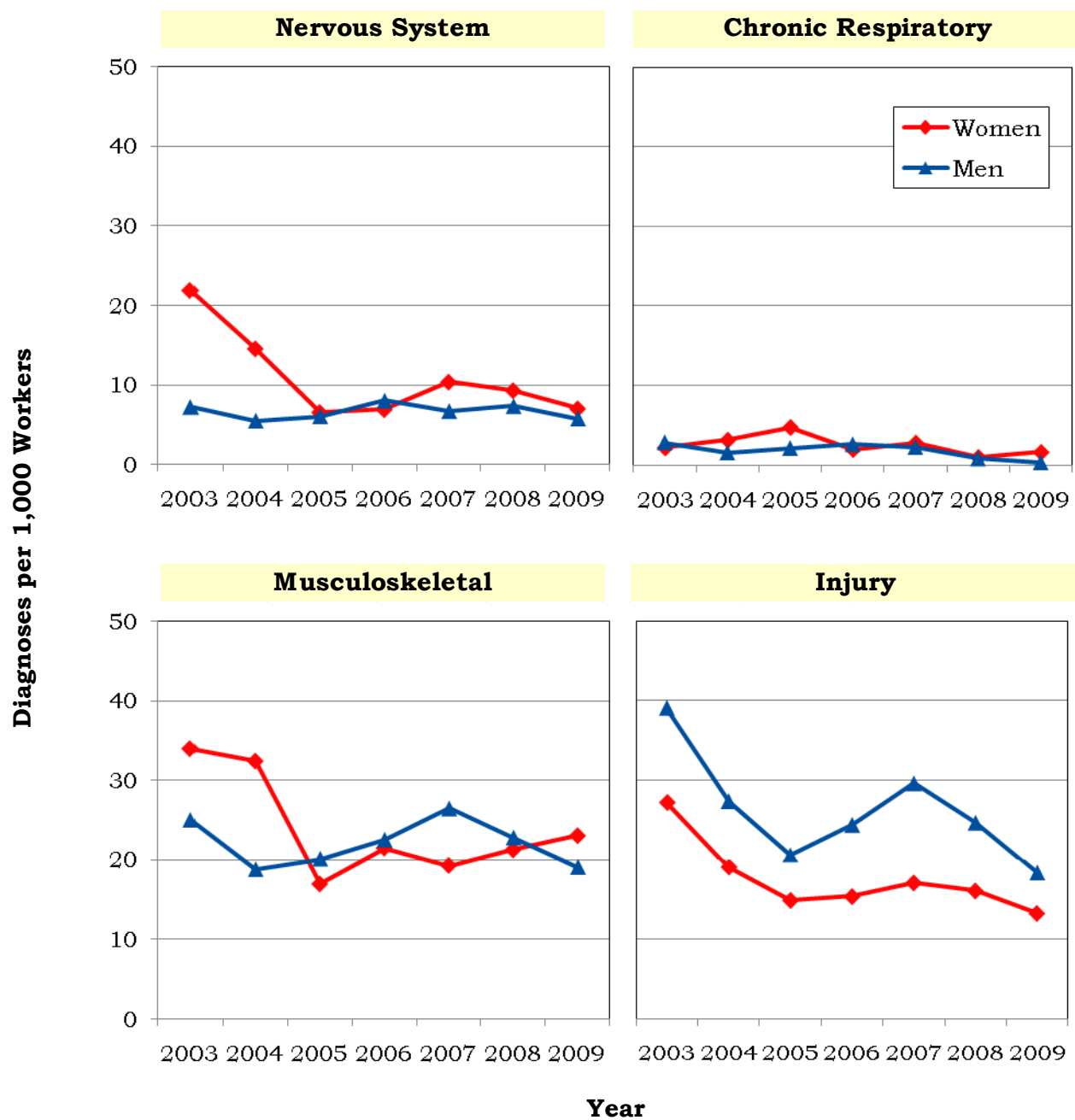
Time Trends

Figure 13. Age-Adjusted Rates for All Diagnoses Combined Among Women and Men from 2003 to 2009*



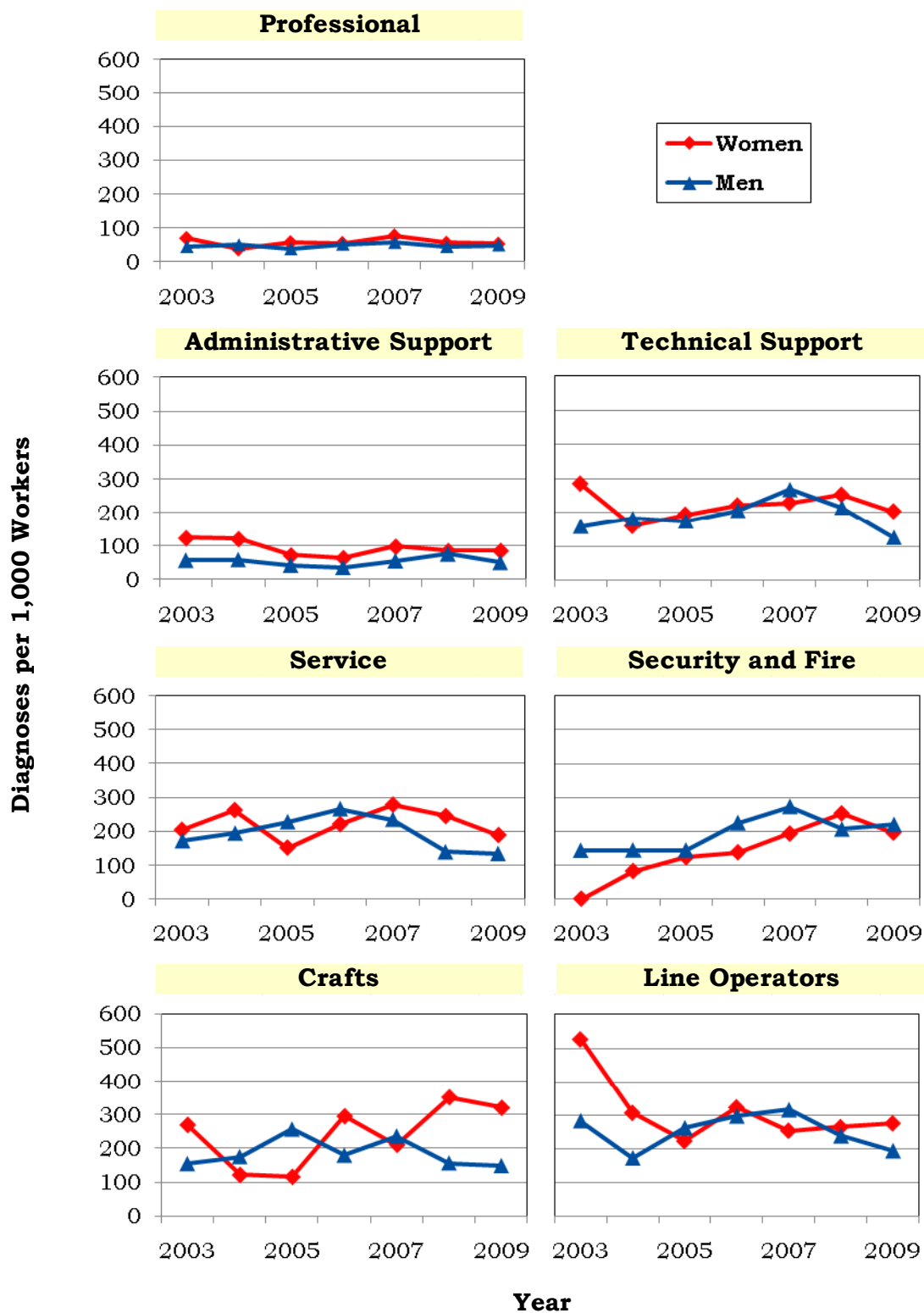
*Standardized to age distribution of 2000 U.S. population.

Figure 14. Age-Adjusted Rates for Selected Diagnostic Categories Among Women and Men from 2003 to 2009*



*Standardized to age distribution of 2000 U.S. population.

Figure 15. Age-Adjusted Rates for All Diagnoses Combined Among Women and Men by Job Category from 2003 to 2009*



*Standardized to age distribution of 2000 U.S. population.

Sentinel Health Events for Occupations (SHEOs)

An occupational sentinel health event (SHEO) is a disease, disability, or death that is likely to be occupationally related. Although sentinel health events may indicate an occupational exposure, many may result from nonoccupational exposures. Sentinel health events are therefore assessed in two categories:

Definite Sentinel Health Events: Diseases that are unlikely to occur in the absence of an occupational exposure (e.g., asbestosis).

Possible Sentinel Health Events: Diseases that may be occupational but can also occur in the absence of an occupational exposure (e.g., lung cancer or carpal tunnel syndrome).

Figure 16. Characteristics of SHEOs by Gender

	Total Number of SHEO Diagnoses		Total Number of Days Absent	
	Men	Women	Men	Women
Definite	192	56	6,674	2,792
Possible	20	8	2,880	383
Total	212	64	9,554	3,175

Figure 17. SHEO Diagnoses by Gender

Diagnoses	Gender	
	Women	Men
Carpal Tunnel Syndrome	13	26
Musculoskeletal Conditions	27	69
Injuries	17	78
Other Conditions	7	39

Occupational Safety and Health Administration (OSHA)-Recordable Events

Figure 18. OSHA-Recordable Events by Gender and Age

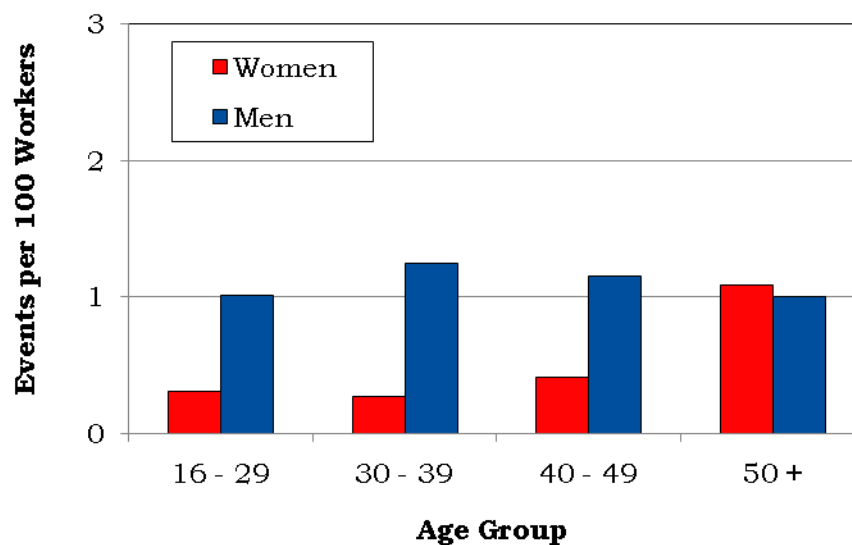
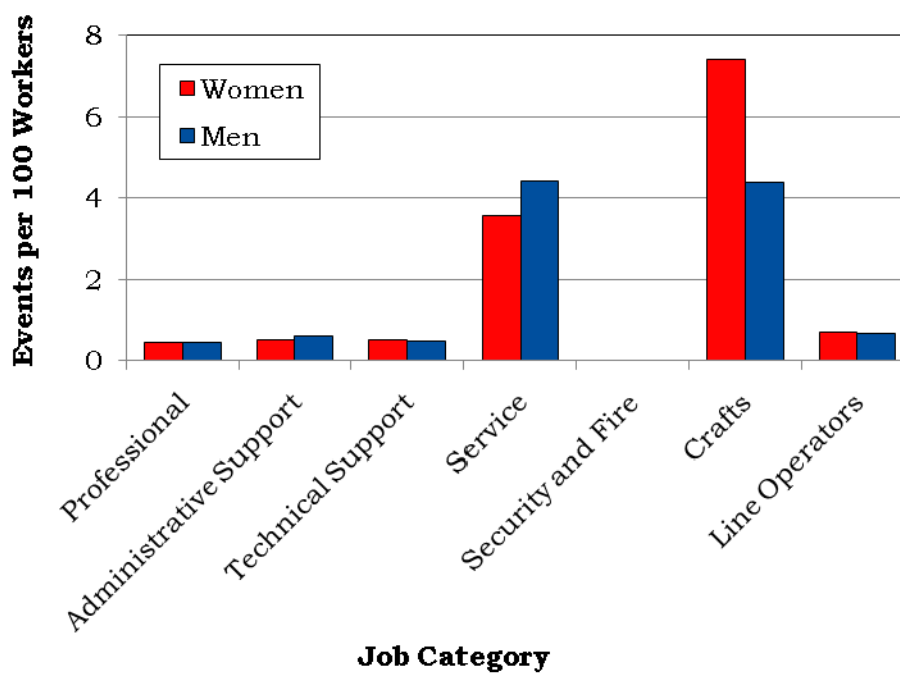


Figure 19. OSHA-Recordable Events by Job Category and Gender



Diagnostic and Accident Categories for OSHA-Recordable Events

Figure 20. OSHA-Recordable Diagnoses by Diagnostic Category and Gender

Diagnostic Category	Gender	
	Women	Men
Musculoskeletal	7	28
Nervous System	5	1
Skin	0	2
Unspecified Symptoms	0	1
Injury	23	120
Fractures - Upper Limb	1	16
Fractures - Lower Limb	2	9
Dislocations	1	1
Back Sprains & Strains	3	15
Other Sprains & Strains	9	14
Intracranial Injuries	0	2
Open Wounds - Head, Neck, Trunk	0	11
Open Wounds - Upper Limb	1	19
Superficial Injuries	1	1
Bruises	1	8
Foreign Bodies Entering Orifice	0	4
Burns	0	3
Unspecified Injuries	3	14
Adverse Reactions to Non-Medical Substances	0	3
Adverse Reactions to External Causes	1	0

Figure 21. OSHA-Recordable Accidents by Type and Gender

Accident Category	Gender	
	Women	Men
	Number of Accidents	Number of Accidents
Motor Vehicle Nontraffic	1	1
Falls	7	21
Natural/Environmental Factors	2	4
Submersion/Suffocation/Foreign Bodies	0	6
Other Accidents	16	77
Struck by an Object	2	24
Caught Between Objects	1	9
Machinery	0	9
Cutting/Piercing Instrument/Object	1	7
Hot, Corrosive, or Caustic Material/Steam	0	2
Overexertion/Strenuous Movements	12	26
Total	26	109

Rates of OSHA-Recordable Events

Figure 22. OSHA-Recordable Rates by Age and Job Categories Among Women, All Diagnoses Combined

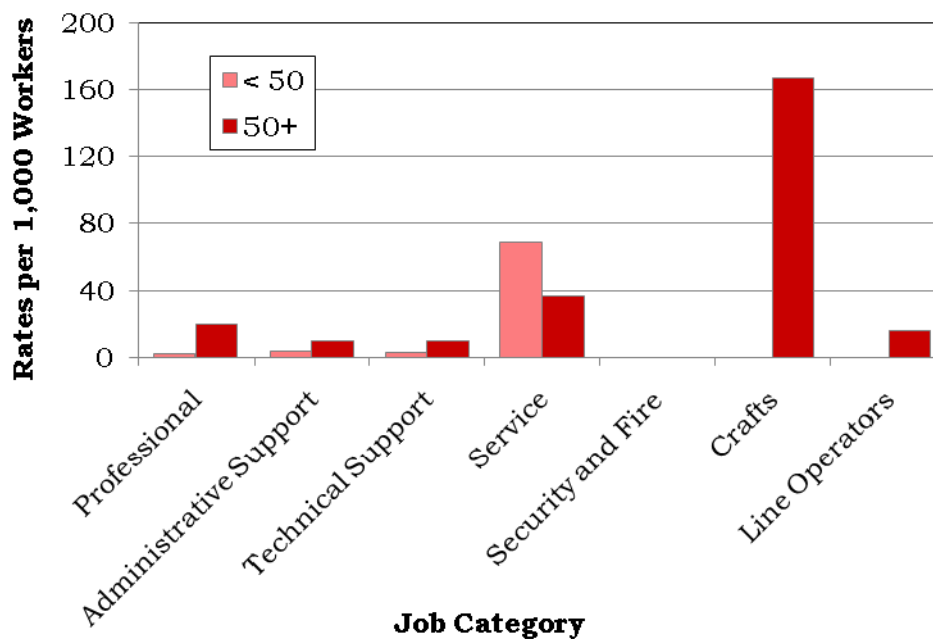
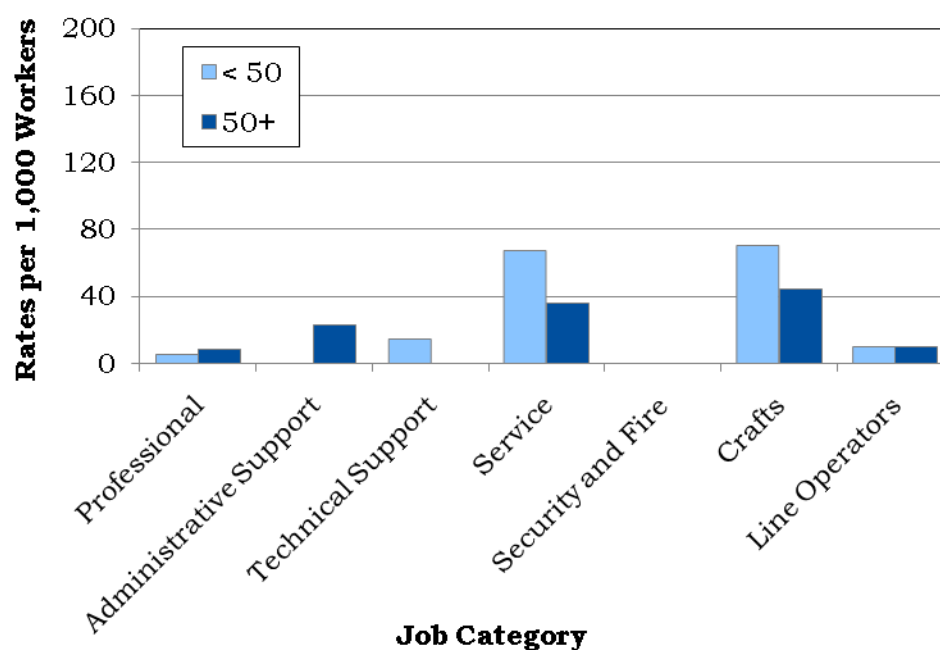
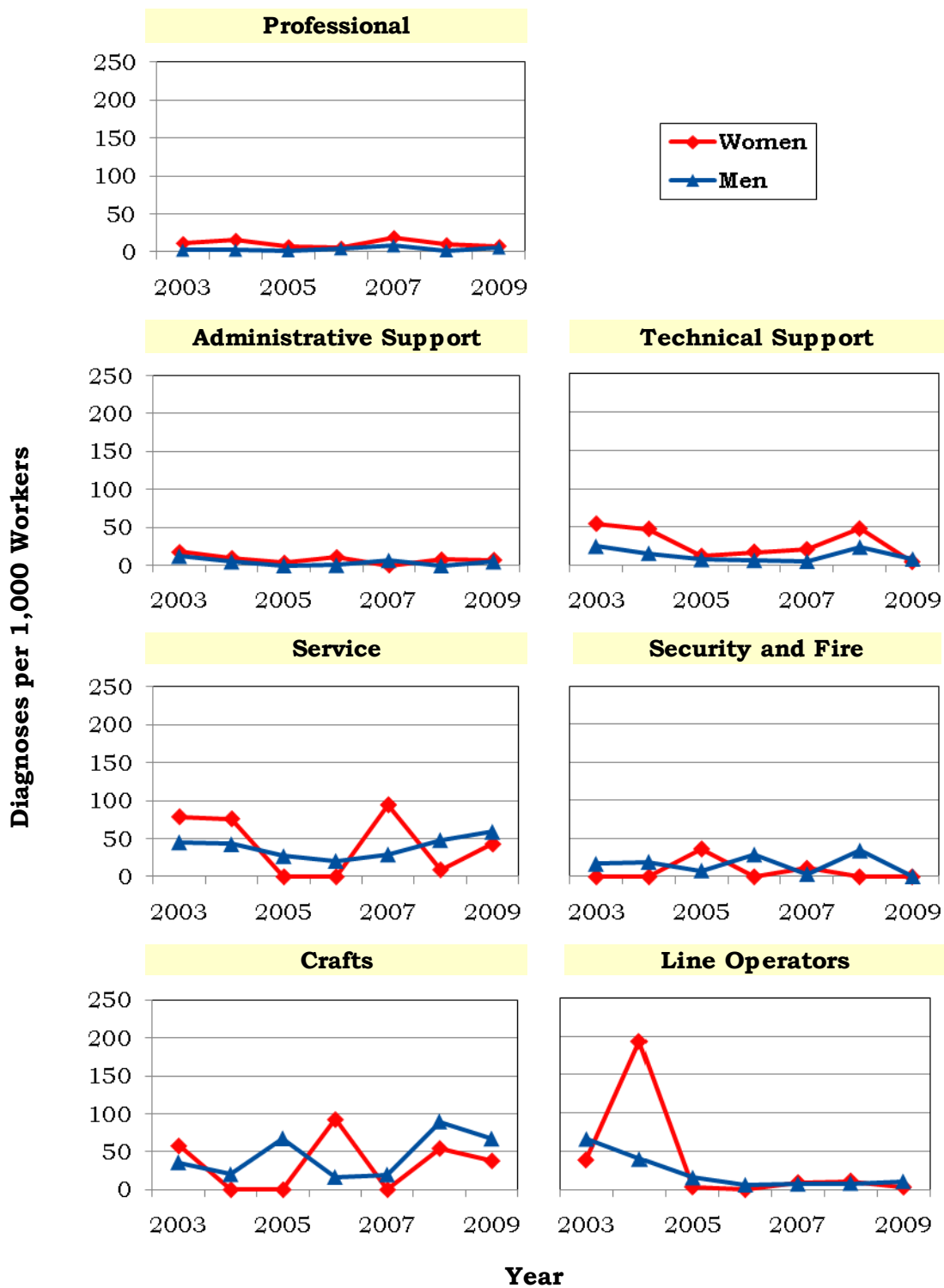


Figure 23. OSHA-Recordable Rates by Age and Job Categories Among Men, All Diagnoses Combined



Time Trends for OSHA-Recordable Events

Figure 24. Age-Adjusted Rates for All OSHA-Recordable Diagnoses Combined Among Women and Men by Job Category from 2003 to 2009*



*Standardized to age distribution of 2000 U.S. population.

Appendices

Hanford Site 2009

Absence Data

Appendix A. Work Force by Gender, Age, and Job Category

Job Category	Women					Men					TOTAL
	Age Group				TOTAL	Age Group				TOTAL	
	16 - 29	30 - 39	40 - 49	50 +		16 - 29	30 - 39	40 - 49	50 +		
Professional	250	331	547	606	1,734	415	656	1,376	2,608	5,055	6,789
Administrative Support	244	299	440	705	1,688	153	174	242	437	1,006	2,694
Technical Support	125	60	117	99	401	258	133	316	357	1,064	1,465
Service	7	17	34	54	112	85	106	152	221	564	676
Security and Fire	7	13	18	29	67	76	91	129	156	452	519
Crafts	2	4	9	12	27	72	174	257	502	1,005	1,032
Line Operators	5	24	55	61	145	126	185	305	420	1,036	1,181
TOTAL	640	748	1,220	1,566	4,174	1,185	1,519	2,777	4,701	10,182	14,356

Appendix B. Age Distribution of the Work Force by Gender

Year	Women				Men			
	Percent Distribution by Age Group				Percent Distribution by Age Group			
	16 - 29	30 - 39	40 - 49	50 +	16 - 29	30 - 39	40 - 49	50 +
1993	28.81	28.44	26.20	16.54	13.18	29.53	30.90	26.39
1994	28.57	28.18	26.35	16.90	13.52	28.54	31.19	26.75
1995	26.39	28.54	28.66	16.41	12.20	28.49	34.18	25.13
1996	18.80	29.63	32.71	18.86	7.76	27.83	37.30	27.10
1997	17.44	30.23	33.39	18.94	7.75	27.28	39.52	25.45
1998	16.95	29.30	32.53	21.22	6.86	24.96	38.76	29.42
1999	17.03	27.84	32.68	22.45	6.97	23.18	38.16	31.68
2000	16.36	26.28	33.26	24.10	7.11	21.37	37.03	34.49
2001	15.47	24.73	33.69	26.12	7.58	20.23	36.00	36.19
2002	15.43	23.37	32.97	28.23	7.27	18.34	35.69	38.70
2003	4.45	20.96	36.90	37.68	2.96	15.36	37.13	44.56
2004	3.70	19.05	37.40	39.85	2.86	14.21	36.48	46.45
2005	10.69	19.70	32.59	37.02	6.47	14.30	33.04	46.19
2006	12.34	19.05	31.97	36.64	6.78	13.76	33.28	46.18
2007	11.64	18.02	32.14	38.19	6.61	13.40	32.33	47.66
2008	12.24	17.95	31.35	38.47	7.39	13.46	30.21	48.94
2009	15.33	17.92	29.23	37.52	11.64	14.92	27.27	46.17

Hanford Site 2009
Absence Data

Appendix C. Total Number of Workers Who Reported at Least One Absence by Gender, Age, and Job Category*

Job Category	Women					Men					TOTAL
	Age Group				TOTAL	Age Group				TOTAL	
	16 - 29	30 - 39	40 - 49	50 +		16 - 29	30 - 39	40 - 49	50 +		
Professional	4	11	25	36	76	7	16	61	142	226	302
Administrative Support	10	14	27	61	112	3	0	12	28	43	155
Technical Support	4	7	21	17	49	14	3	39	49	105	154
Service	0	2	6	11	19	4	8	23	29	64	83
Security and Fire	2	1	0	3	6	9	15	17	29	70	76
Crafts	0	1	2	2	5	2	13	34	85	134	139
Line Operators	0	5	10	15	30	5	24	37	59	125	155
TOTAL	20	41	91	145	297	44	79	223	421	767	1,064

*Only those job categories and gender/age combinations with at least one absence appear in this table.

Appendix D. Total Number of Absences by Gender, Age, and Job Category*

Job Category	Women					Men					TOTAL
	Age Group				TOTAL	Age Group				TOTAL	
	16 - 29	30 - 39	40 - 49	50 +		16 - 29	30 - 39	40 - 49	50 +		
Professional	4	11	27	40	82	7	19	65	166	257	339
Administrative Support	11	16	28	71	126	3	0	14	33	50	176
Technical Support	5	10	27	24	66	14	6	52	64	136	202
Service	0	2	8	16	26	5	9	27	33	74	100
Security and Fire	4	1	0	5	10	10	20	19	32	81	91
Crafts	0	1	2	9	12	2	16	40	102	160	172
Line Operators	0	7	15	20	42	7	30	48	72	157	199
TOTAL	24	48	107	185	364	48	100	265	502	915	1,279

*Only those job categories and gender/age combinations with at least one absence appear in this table.

Hanford Site 2009
Absence Data

Appendix E. Distribution of the Number of Calendar Days Missed per Absence by Gender and Age*

Number of Calendar Days	Women					Men					TOTAL
	Age Group				TOTAL	Age Group				TOTAL	
	16 - 29	30 - 39	40 - 49	50 +		16 - 29	30 - 39	40 - 49	50 +		
< 15	21	30	53	86	190	35	69	160	269	533	723
15 - 28	0	9	19	43	71	6	11	36	77	130	201
29 - 42	2	2	11	22	37	3	3	24	43	73	110
43 - 56	0	1	4	8	13	1	2	8	22	33	46
57 - 91	1	4	9	14	28	2	6	17	36	61	89
92 - 182	0	2	9	10	21	0	8	17	43	68	89
183 +	0	0	2	2	4	1	1	3	12	17	21
TOTAL	24	48	107	185	364	48	100	265	502	915	1,279

*Only those gender/age combinations with at least one absence appear in this table.

Hanford Site 2009
Absence Data

Appendix F. Distribution of the Number of Calendar Days Missed per Absence by Gender and Job Category*

Women

Number of Calendar Days	Job Category							TOTAL
	Professional	Administrative Support	Technical Support	Service	Security and Fire	Crafts	Line Operators	
< 15	46	61	38	15	8	4	18	190
15 - 28	15	32	6	1	2	4	11	71
29 - 42	13	14	7	2	0	0	1	37
43 - 56	5	4	2	1	0	0	1	13
57 - 91	1	11	7	4	0	1	4	28
92 - 182	2	4	6	1	0	3	5	21
183 +	0	0	0	2	0	0	2	4
TOTAL	82	126	66	26	10	12	42	364

Men

Number of Calendar Days	Job Category							TOTAL
	Professional	Administrative Support	Technical Support	Service	Security and Fire	Crafts	Line Operators	
< 15	158	32	84	44	52	77	86	533
15 - 28	53	6	15	5	9	24	18	130
29 - 42	16	5	12	6	7	12	15	73
43 - 56	7	2	4	4	0	12	4	33
57 - 91	9	5	8	7	5	15	12	61
92 - 182	10	0	13	7	6	14	18	68
183 +	4	0	0	1	2	6	4	17
TOTAL	257	50	136	74	81	160	157	915

*Only those gender/job category combinations with at least one absence appear in this table.

Hanford Site 2009

Absence Data

Appendix G. Number of Diagnoses in Each Diagnostic Category by Gender and Age*

		Women				
		Age Group				TOTAL
		16 - 29	30 - 39	40 - 49	50 +	
Diagnostic Category	ICD-9-CM Code					
INFECTIOUS & PARASITIC DISEASES (DIS)	001-139	1	3	2	5	11
-Intestinal Infectious Dis	001-009	0	0	2	2	4
-Other Bacterial Dis	030-041	0	1	0	0	1
-Polio & Other Viral CNS Dis	045-049	0	0	0	0	0
-Viral Dis with Exanthem	050-059	0	1	0	2	3
-Arthropod-Borne Viral Dis	060-066	0	0	0	0	0
-Other Viral Dis & Chlamydiae	070-079	1	1	0	0	2
-Rickettsioses & Other Arthropod	080-088	0	0	0	0	0
-Mycoses	110-118	0	0	0	1	1
-Other Infections & Parasitic Dis	130-136	0	0	0	0	0
MALIGNANT NEOPLASMS	140-208, 209.0-209.3, 230-234	0	1	4	6	11
-Digestive & Peritoneal	150-159	0	0	1	0	1
-Respiratory & Intrathoracic	160-165	0	0	0	1	1
-Bone, Connective Tissue, Skin	170-173, 176	0	1	1	2	4
-Breast	174-175	0	0	2	3	5
-Genitourinary	179-189	0	0	0	0	0
-Nervous System	190-192	0	0	0	0	0
-Other & Unspecified Sites	195-199, 209.7	0	0	0	0	0
-Lymphatic & Hematopoietic	200-208	0	0	0	0	0
-Carcinoma in situ	230-234	0	0	0	0	0
BENIGN & UNCERTAIN NEOPLASMS	209.4-209.6, 210-229, 235-239	0	0	6	3	9
ENDOCRINE/METABOLIC/IMMUNITY	240-279	0	0	1	7	8
-Thyroid Gland Disorders	240-246	0	0	0	2	2
-Other Endocrine Gland Dis	249-259	0	0	0	2	2
-Nutritional Deficiencies	260-269	0	0	0	1	1
-Other Metabolic & Immunity Disorders	270-279	0	0	1	2	3
MENTAL DISORDERS	290-319	5	1	9	5	20
-Psychoses	290-299	0	0	0	0	0
-Non-Psychotic Disorders	300-302, 306-316	5	0	8	5	18
-Alcohol Dependence	303	0	0	0	0	0
-Drug Dependence	304-305	0	1	1	0	2
NERVOUS SYSTEM (NS) & SENSE ORGANS	320-389	1	2	15	20	38
-Inflammatory Dis of Central NS	320-326	0	0	0	0	0
-Organic Sleep Disorders	327	0	0	0	0	0
-Pain	338	0	0	3	2	5

(Continued)

*Only those diagnostic categories and gender/age combinations with at least one occurrence appear in this table.

Hanford Site 2009

Absence Data

Appendix G. Number of Diagnoses in Each Diagnostic Category by Gender and Age*

		Men					TOTAL
		Age Group				TOTAL	
		16 - 29	30 - 39	40 - 49	50 +		
Diagnostic Category	ICD-9-CM Code						
INFECTIOUS & PARASITIC DISEASES (DIS)	001-139	1	3	9	11	24	35
-Intestinal Infectious Dis	001-009	0	0	2	0	2	6
-Other Bacterial Dis	030-041	0	0	2	2	4	5
-Polio & Other Viral CNS Dis	045-049	0	0	1	0	1	1
-Viral Dis with Exanthem	050-059	0	0	2	3	5	8
-Arthropod-Borne Viral Dis	060-066	0	0	1	1	2	2
-Other Viral Dis & Chlamydiae	070-079	0	1	1	3	5	7
-Rickettsioses & Other Arthropod	080-088	0	0	0	1	1	1
-Mycoses	110-118	1	1	0	0	2	3
-Other Infections & Parasitic Dis	130-136	0	1	0	1	2	2
MALIGNANT NEOPLASMS	140-208, 209.0-209.3, 230-234	0	3	12	45	60	71
-Digestive & Peritoneal	150-159	0	0	3	8	11	12
-Respiratory & Intrathoracic	160-165	0	0	0	4	4	5
-Bone, Connective Tissue, Skin	170-173, 176	0	3	6	9	18	22
-Breast	174-175	0	0	0	1	1	6
-Genitourinary	179-189	0	0	3	13	16	16
-Nervous System	190-192	0	0	0	1	1	1
-Other & Unspecified Sites	195-199, 209.7	0	0	0	3	3	3
-Lymphatic & Hematopoietic	200-208	0	0	0	5	5	5
-Carcinoma in situ	230-234	0	0	0	1	1	1
BENIGN & UNCERTAIN NEOPLASMS	209.4-209.6, 210-229, 235-239	1	4	9	15	29	38
ENDOCRINE/METABOLIC/IMMUNITY	240-279	2	1	9	28	40	48
-Thyroid Gland Disorders	240-246	0	0	0	1	1	3
-Other Endocrine Gland Dis	249-259	0	0	5	15	20	22
-Nutritional Deficiencies	260-269	0	0	0	0	0	1
-Other Metabolic & Immunity Disorders	270-279	2	1	4	12	19	22
MENTAL DISORDERS	290-319	2	4	7	10	23	43
-Psychoses	290-299	0	0	1	0	1	1
-Non-Psychotic Disorders	300-302, 306-316	2	3	4	10	19	37
-Alcohol Dependence	303	0	0	1	0	1	1
-Drug Dependence	304-305	0	1	1	0	2	4
NERVOUS SYSTEM (NS) & SENSE ORGANS	320-389	2	6	19	45	72	110
-Inflammatory Dis of Central NS	320-326	0	0	0	1	1	1
-Organic Sleep Disorders	327	0	0	1	0	1	1
-Pain	338	0	0	1	1	2	7

(Continued)

*Only those diagnostic categories and gender/age combinations with at least one occurrence appear in this table.

Hanford Site 2009

Absence Data

Appendix G. Number of Diagnoses in Each Diagnostic Category by Gender and Age*

		Women				
		Age Group				TOTAL
		16 - 29	30 - 39	40 - 49	50 +	
Diagnostic Category	ICD-9-CM Code					
-Other Disorders of Central NS	340-349	0	0	2	2	4
-Disorders of Peripheral NS	350-359	0	2	7	10	19
-Disorders of Eye	360-379	1	0	1	6	8
-Diseases of Ear & Mastoid	380-389	0	0	2	0	2
CIRCULATORY SYSTEM	390-459	1	3	5	8	17
-Chronic Rheumatic Heart Dis	393-398	0	0	0	0	0
-Hypertensive Dis	401-405	0	0	3	6	9
-Ischemic Heart Dis	410-414	0	1	0	0	1
-Dis of Pulmonary Circulation	415-417	0	0	0	0	0
-Other Heart Dis	420-429	1	1	0	1	3
-Cerebrovascular Dis	430-438	0	0	0	1	1
-Dis of Arteries & Capillaries	440-449	0	0	0	0	0
-Dis of Veins, Lymphatics, Other	451-459	0	1	2	0	3
RESPIRATORY SYSTEM	460-519	8	13	16	46	83
-Acute Respiratory Infections	460-466	1	3	10	21	35
-Other Dis Upper Respiratory Tract	470-478	0	1	0	3	4
-Pneumonia & Influenza	480-488	5	9	6	14	34
-Chronic Obstructive Dis	490-496	1	0	0	6	7
-Other Respiratory Dis	510-519	1	0	0	2	3
DIGESTIVE SYSTEM	520-579	1	2	4	16	23
-Oral Cavity, Saliva Glands, Jaw	520-529	0	0	0	0	0
-Esophagus, Stomach, Duodenum	530-538	0	0	0	1	1
-Appendicitis	540-543	0	0	1	0	1
-Hernias	550-553	0	1	0	1	2
-Enteritis, Colitis	555-558	1	1	1	2	5
-Other Intestinal Dis	560-569	0	0	0	4	4
-Other Digestive Dis	570-579	0	0	2	8	10
GENTOURINARY SYSTEM	580-629	1	4	6	8	19
-Nephritis, Nephrosis	580-589	0	0	0	1	1
-Other Urinary Dis	590-599	1	3	2	6	12
-Male Genital Organ Dis	600-608	0	0	0	0	0
-Breast Disorders	610-612	0	0	1	0	1
-Pelvic Inflammatory Dis	614-616	0	0	1	0	1
-Other Female Disorders	617-629	0	1	2	1	4
SKIN AND SUBCUTANEOUS TISSUE	680-709	0	1	3	2	6
-Infections	680-686	0	0	1	0	1
-Other Inflammatory Conditions	690-698	0	0	0	0	0

(Continued)

*Only those diagnostic categories and gender/age combinations with at least one occurrence appear in this table.

Hanford Site 2009

Absence Data

Appendix G. Number of Diagnoses in Each Diagnostic Category by Gender and Age*

		Men					TOTAL
		Age Group					
		16 - 29	30 - 39	40 - 49	50 +	TOTAL	
Diagnostic Category	ICD-9-CM Code						
-Other Disorders of Central NS	340-349	2	2	1	4	9	13
-Disorders of Peripheral NS	350-359	0	3	8	21	32	51
-Disorders of Eye	360-379	0	0	3	13	16	24
-Diseases of Ear & Mastoid	380-389	0	1	5	5	11	13
CIRCULATORY SYSTEM	390-459	3	1	26	75	105	122
-Chronic Rheumatic Heart Dis	393-398	0	0	0	4	4	4
-Hypertensive Dis	401-405	0	1	17	26	44	53
-Ischemic Heart Dis	410-414	0	0	1	16	17	18
-Dis of Pulmonary Circulation	415-417	0	0	0	1	1	1
-Other Heart Dis	420-429	0	0	4	14	18	21
-Cerebrovascular Dis	430-438	0	0	3	8	11	12
-Dis of Arteries & Capillaries	440-449	0	0	0	1	1	1
-Dis of Veins, Lymphatics, Other	451-459	3	0	1	5	9	12
RESPIRATORY SYSTEM	460-519	8	17	34	40	99	182
-Acute Respiratory Infections	460-466	2	3	11	21	37	72
-Other Dis Upper Respiratory Tract	470-478	0	4	5	0	9	13
-Pneumonia & Influenza	480-488	6	10	17	13	46	80
-Chronic Obstructive Dis	490-496	0	0	0	4	4	11
-Other Respiratory Dis	510-519	0	0	1	2	3	6
DIGESTIVE SYSTEM	520-579	0	10	29	74	113	136
-Oral Cavity, Saliva Glands, Jaw	520-529	0	1	1	2	4	4
-Esophagus, Stomach, Duodenum	530-538	0	0	1	7	8	9
-Appendicitis	540-543	0	1	0	3	4	5
-Hernias	550-553	0	5	18	29	52	54
-Enteritis, Colitis	555-558	0	0	3	2	5	10
-Other Intestinal Dis	560-569	0	3	4	8	15	19
-Other Digestive Dis	570-579	0	0	2	23	25	35
GENITOURINARY SYSTEM	580-629	0	5	9	18	32	51
-Nephritis, Nephrosis	580-589	0	0	0	2	2	3
-Other Urinary Dis	590-599	0	3	7	9	19	31
-Male Genital Organ Dis	600-608	0	2	2	7	11	11
-Breast Disorders	610-612	0	0	0	0	0	1
-Pelvic Inflammatory Dis	614-616	0	0	0	0	0	1
-Other Female Disorders	617-629	0	0	0	0	0	4
SKIN AND SUBCUTANEOUS TISSUE	680-709	2	2	7	19	30	36
-Infections	680-686	1	0	4	13	18	19
-Other Inflammatory Conditions	690-698	0	0	1	1	2	2

(Continued)

*Only those diagnostic categories and gender/age combinations with at least one occurrence appear in this table.

Hanford Site 2009

Absence Data

Appendix G. Number of Diagnoses in Each Diagnostic Category by Gender and Age*

		Women				
		Age Group				TOTAL
		16 - 29	30 - 39	40 - 49	50 +	
Diagnostic Category	ICD-9-CM Code					
-Other	700-709	0	1	2	2	5
MUSCULOSKELETAL & CONNECTIVE TISSUE	710-739	5	10	33	59	107
-Arthropathies	710-719	1	2	11	23	37
-Dorsopathies	720-724	2	6	17	19	44
-Rheumatism, Excluding Back	725-729	2	2	4	17	25
-Other Dis & Acquired Deformities	730-739	0	0	1	0	1
CONGENITAL ANOMALIES	740-759	0	0	0	0	0
SYMPTOMS, SIGNS, & ILL-DEFINED CONDITIONS	780-799	2	4	14	13	33
-Symptoms	780-789	2	4	12	9	27
-Non-Specific Abnormal Findings	790-796	0	0	2	4	6
INJURY & POISONING	800-999	7	12	13	24	56
-Fracture - Skull	800-804	0	0	0	0	0
-Fracture - Upper Limb	810-819	0	0	0	0	0
-Dislocation	830-839	0	0	1	2	3
-Sprains & Strains - Back	846-847	0	2	0	1	3
-Sprains & Strains - Other	840-845, 848	1	3	9	12	25
-Intracranial Injury	850-854	0	0	0	0	0
-Internal Injury - Thorax, Abdomen, Pelvis	860-869	0	0	0	0	0
-Open Wound - Head, Neck, Trunk	870-879	0	0	1	0	1
-Open Wound - Upper Limb	880-887	2	1	0	0	3
-Open Wound - Lower Limb	890-897	0	0	0	1	1
-Late Effects of Accident	905-909	0	0	0	1	1
-Superficial Injury	910-919	2	1	0	2	5
-Contusion	920-924	1	2	1	0	4
-Crushing Injury	925-929	0	0	0	0	0
-Foreign Body Entering Orifice	930-939	0	0	0	0	0
-Burns	940-949	0	1	0	0	1
-Poisoning - Medicinal/Biological	960-979	1	0	0	1	2
-Toxic Effects - Non-medicinal	980-989	0	0	0	0	0
-Unspecified Effects - External Causes	990-995	0	1	0	0	1
-Complications of Surgical/Medical Care	996-999	0	1	1	4	6
HEALTH STATUS/HEALTH SERVICE CONTACT	V01-V89	77	175	239	351	842
-Communicable Dis	V01-V06	0	0	0	0	0
-Isolation & Prophylactic Measures	V07-V09	0	1	0	0	1
-Personal & Family History	V10-V19	0	1	3	2	6

(Continued)

*Only those diagnostic categories and gender/age combinations with at least one occurrence appear in this table.

Hanford Site 2009

Absence Data

Appendix G. Number of Diagnoses in Each Diagnostic Category by Gender and Age*

		Men					TOTAL
		Age Group				TOTAL	
		16 - 29	30 - 39	40 - 49	50 +		
Diagnostic Category	ICD-9-CM Code						
-Other	700-709	1	2	2	5	10	15
MUSCULOSKELETAL & CONNECTIVE TISSUE	710-739	15	21	74	115	225	332
-Arthropathies	710-719	9	4	32	45	90	127
-Dorsopathies	720-724	4	11	31	35	81	125
-Rheumatism, Excluding Back	725-729	2	3	9	32	46	71
-Other Dis & Acquired Deformities	730-739	0	3	2	3	8	9
CONGENITAL ANOMALIES	740-759	0	0	0	1	1	1
SYMPTOMS, SIGNS, & ILL-DEFINED CONDITIONS	780-799	7	15	31	53	106	139
-Symptoms	780-789	4	10	20	38	72	99
-Non-Specific Abnormal Findings	790-796	3	5	11	15	34	40
INJURY & POISONING	800-999	19	37	44	89	189	245
-Fracture - Skull	800-804	0	0	0	1	1	1
-Fracture - Upper Limb	810-819	1	0	0	1	2	2
-Dislocation	830-839	1	0	5	2	8	11
-Sprains & Strains - Back	846-847	1	6	4	4	15	18
-Sprains & Strains - Other	840-845, 848	4	13	15	36	68	93
-Intracranial Injury	850-854	0	0	1	2	3	3
-Internal Injury - Thorax, Abdomen, Pelvis	860-869	0	0	2	1	3	3
-Open Wound - Head, Neck, Trunk	870-879	1	1	2	1	5	6
-Open Wound - Upper Limb	880-887	3	2	4	12	21	24
-Open Wound - Lower Limb	890-897	0	1	2	2	5	6
-Late Effects of Accident	905-909	0	1	0	0	1	2
-Superficial Injury	910-919	3	2	5	6	16	21
-Contusion	920-924	1	4	0	4	9	13
-Crushing Injury	925-929	1	0	1	0	2	2
-Foreign Body Entering Orifice	930-939	1	0	0	0	1	1
-Burns	940-949	1	1	0	1	3	4
-Poisoning - Medicinal/Biological	960-979	0	3	0	0	3	5
-Toxic Effects - Non-medicinal	980-989	1	1	3	10	15	15
-Unspecified Effects - External Causes	990-995	0	0	0	2	2	3
-Complications of Surgical/Medical Care	996-999	0	2	0	4	6	12
HEALTH STATUS/HEALTH SERVICE CONTACT	V01-V89	81	180	444	962	1,667	2,509
-Communicable Dis	V01-V06	0	1	0	0	1	1
-Isolation & Prophylactic Measures	V07-V09	0	0	0	1	1	2
-Personal & Family History	V10-V19	1	1	2	9	13	19

(Continued)

*Only those diagnostic categories and gender/age combinations with at least one occurrence appear in this table.

Hanford Site 2009

Absence Data

Appendix G. Number of Diagnoses in Each Diagnostic Category by Gender and Age*

		Women				
		Age Group				TOTAL
		16 - 29	30 - 39	40 - 49	50 +	
Diagnostic Category	ICD-9-CM Code					
-Health Services Reproduction/Development	V20-V29	5	3	0	0	8
-Health Status	V40-V49	3	26	74	111	214
-Specific Procedures/Aftercare	V50-V59	1	7	4	10	22
-Other Circumstances	V60-V69	68	137	157	228	590
-Examination & Investigation	V70-V82	0	0	0	0	0
-Other Specified Exposures	V87	0	0	0	0	0
-Acquired Absence of Organs	V88	0	0	1	0	1

*Only those diagnostic categories and gender/age combinations with at least one occurrence appear in this table.

Hanford Site 2009

Absence Data

Appendix G. Number of Diagnoses in Each Diagnostic Category by Gender and Age*

		Men					
		Age Group				TOTAL	
		16 - 29	30 - 39	40 - 49	50 +		
Diagnostic Category	ICD-9-CM Code						
-Health Services Reproduction/Development	V20-V29	1	0	0	0	1	9
-Health Status	V40-V49	13	44	125	322	504	718
-Specific Procedures/Aftercare	V50-V59	2	9	11	23	45	67
-Other Circumstances	V60-V69	64	123	306	599	1,092	1,682
-Examination & Investigation	V70-V82	0	2	0	7	9	9
-Other Specified Exposures	V87	0	0	0	1	1	1
-Acquired Absence of Organs	V88	0	0	0	0	0	1

	Women					Men					
	Age Group				TOTAL	Age Group				TOTAL	
	16 - 29	30 - 39	40 - 49	50 +		16 - 29	30 - 39	40 - 49	50 +		
Diagnostic Category	109	231	370	573	1,283	143	309	763	1,600	2,815	4,098
Total											

*Only those diagnostic categories and gender/age combinations with at least one occurrence appear in this table.

Hanford Site 2009

Absence Data

Appendix H. Total Number of Calendar Days Absent in Each Diagnostic Category by Gender and Age*

		Women				
		Age Group				TOTAL
		16 - 29	30 - 39	40 - 49	50 +	
Diagnostic Category	ICD-9-CM Code					
INFECTIOUS & PARASITIC DISEASES (DIS)	001-139	12	32	18	148	210
MALIGNANT NEOPLASMS	140-208, 209.0-209.3, 230-234	0	21	60	199	280
BENIGN & UNCERTAIN NEOPLASMS	209.4-209.6, 210-229, 235-239	0	0	167	217	384
ENDOCRINE/METABOLIC/IMMUNITY	240-279	0	0	23	105	128
MENTAL DISORDERS	290-319	63	26	1,131	348	1,568
NERVOUS SYSTEM (NS) & SENSE ORGANS	320-389	80	29	1,080	862	2,051
CIRCULATORY SYSTEM	390-459	80	28	90	135	333
RESPIRATORY SYSTEM	460-519	57	162	122	604	945
DIGESTIVE SYSTEM	520-579	5	69	114	426	614
GENITOURINARY SYSTEM	580-629	4	62	175	253	494
SKIN AND SUBCUTANEOUS TISSUE	680-709	0	7	18	32	57
MUSCULOSKELETAL & CONNECTIVE TISSUE	710-739	127	343	1,002	2,063	3,535
CONGENITAL ANOMALIES	740-759	0	0	0	0	0
SYMPTOMS, SIGNS, & ILL-DEFINED CONDITIONS	780-799	16	72	306	190	584
INJURY & POISONING	800-999	25	307	410	979	1,721

*Absences with >1 ICD-9-CM code in the same diagnostic category were counted only once. Only those diagnostic categories and gender/age combinations with at least one occurrence appear in this table.

Hanford Site 2009

Absence Data

Appendix H. Total Number of Calendar Days Absent in Each Diagnostic Category by Gender and Age*

		Men					
		Age Group				TOTAL	
		16 - 29	30 - 39	40 - 49	50 +		
Diagnostic Category	ICD-9-CM Code						
INFECTIOUS & PARASITIC DISEASES (DIS)	001-139	1	36	308	351	696	906
MALIGNANT NEOPLASMS	140-208, 209.0-209.3, 230-234	0	6	519	1,995	2,520	2,800
BENIGN & UNCERTAIN NEOPLASMS	209.4-209.6, 210-229, 235-239	4	42	84	382	512	896
ENDOCRINE/METABOLIC/IMMUNITY	240-279	4	26	150	876	1,056	1,184
MENTAL DISORDERS	290-319	1,203	158	234	307	1,902	3,470
NERVOUS SYSTEM (NS) & SENSE ORGANS	320-389	1,205	568	2,619	1,704	6,096	8,147
CIRCULATORY SYSTEM	390-459	15	12	386	2,587	3,000	3,333
RESPIRATORY SYSTEM	460-519	115	199	410	631	1,355	2,300
DIGESTIVE SYSTEM	520-579	0	294	623	1,821	2,738	3,352
GENITOURINARY SYSTEM	580-629	0	66	138	278	482	976
SKIN AND SUBCUTANEOUS TISSUE	680-709	28	177	106	318	629	686
MUSCULOSKELETAL & CONNECTIVE TISSUE	710-739	1,510	818	2,468	4,670	9,466	13001
CONGENITAL ANOMALIES	740-759	0	0	0	1	1	1
SYMPTOMS, SIGNS, & ILL-DEFINED CONDITIONS	780-799	48	514	292	1,404	2,258	2,842
INJURY & POISONING	800-999	157	604	1,199	3,641	5,601	7,322

*Absences with >1 ICD-9-CM code in the same diagnostic category were counted only once. Only those diagnostic categories and gender/age combinations with at least one occurrence appear in this table.

Hanford Site 2009

Absence Data

Appendix I. Number of Diagnoses in Each Diagnostic Category by Gender and Job Category*

		Women			
		Job Category			
		Professional	Administrative Support	Technical Support	Service
Diagnostic Category	ICD-9-CM Code				
INFECTIOUS & PARASITIC DISEASES (DIS)	001-139	3	3	1	1
-Intestinal Infectious Dis	001-009	1	0	0	1
-Other Bacterial Dis	030-041	1	0	0	0
-Viral Dis with Exanthem	050-059	0	2	0	0
-Other Viral Dis & Chlamydiae	070-079	1	1	0	0
-Mycoses	110-118	0	0	1	0
MALIGNANT NEOPLASMS	140-208, 209.0-209.3, 230-234	3	5	2	1
-Digestive & Peritoneal	150-159	1	0	0	0
-Respiratory & Intrathoracic	160-165	0	1	0	0
-Bone, Connective Tissue, Skin	170-173, 176	0	1	2	1
-Breast	174-175	2	3	0	0
BENIGN & UNCERTAIN NEOPLASMS	209.4-209.6, 210-229, 235-239	5	3	0	0
ENDOCRINE/METABOLIC/IMMUNITY	240-279	0	5	0	0
-Thyroid Gland Disorders	240-246	0	0	0	0
-Other Endocrine Gland Dis	249-259	0	2	0	0
-Nutritional Deficiencies	260-269	0	1	0	0
-Other Metabolic & Immunity Disorders	270-279	0	2	0	0
MENTAL DISORDERS	290-319	2	9	1	1
-Non-Psychotic Disorders	300-302, 306-316	2	8	1	1
-Drug Dependence	304-305	0	1	0	0
NERVOUS SYSTEM (NS) & SENSE ORGANS	320-389	14	12	7	2
-Pain	338	1	0	1	1
-Other Disorders of Central NS	340-349	1	2	0	0
-Disorders of Peripheral NS	350-359	9	5	4	1
-Disorders of Eye	360-379	2	4	2	0
-Diseases of Ear & Mastoid	380-389	1	1	0	0
CIRCULATORY SYSTEM	390-459	3	10	3	0
-Hypertensive Dis	401-405	2	4	3	0
-Ischemic Heart Dis	410-414	0	0	0	0
-Other Heart Dis	420-429	1	2	0	0
-Cerebrovascular Dis	430-438	0	1	0	0
-Dis of Veins, Lymphatics, Other	451-459	0	3	0	0
RESPIRATORY SYSTEM	460-519	16	29	18	9
-Acute Respiratory Infections	460-466	6	11	7	3

(Continued)

*Only those diagnostic categories and gender/job category combinations with at least one occurrence appear in this table.

Hanford Site 2009

Absence Data

Appendix I. Number of Diagnoses in Each Diagnostic Category by Gender and Job Category*

		Women			
		Job Category			TOTAL
		Security and Fire	Crafts	Line Operators	
Diagnostic Category	ICD-9-CM Code				
INFECTIOUS & PARASITIC DISEASES (DIS)	001-139	0	0	3	11
-Intestinal Infectious Dis	001-009	0	0	2	4
-Other Bacterial Dis	030-041	0	0	0	1
-Viral Dis with Exanthem	050-059	0	0	1	3
-Other Viral Dis & Chlamydiae	070-079	0	0	0	2
-Mycoses	110-118	0	0	0	1
MALIGNANT NEOPLASMS	140-208, 209.0-209.3, 230-234	0	0	0	11
-Digestive & Peritoneal	150-159	0	0	0	1
-Respiratory & Intrathoracic	160-165	0	0	0	1
-Bone, Connective Tissue, Skin	170-173, 176	0	0	0	4
-Breast	174-175	0	0	0	5
BENIGN & UNCERTAIN NEOPLASMS	209.4-209.6, 210-229, 235-239	0	0	1	9
ENDOCRINE/METABOLIC/IMMUNITY	240-279	0	0	3	8
-Thyroid Gland Disorders	240-246	0	0	2	2
-Other Endocrine Gland Dis	249-259	0	0	0	2
-Nutritional Deficiencies	260-269	0	0	0	1
-Other Metabolic & Immunity Disorders	270-279	0	0	1	3
MENTAL DISORDERS	290-319	2	2	3	20
-Non-Psychotic Disorders	300-302, 306-316	1	2	3	18
-Drug Dependence	304-305	1	0	0	2
NERVOUS SYSTEM (NS) & SENSE ORGANS	320-389	0	0	3	38
-Pain	338	0	0	2	5
-Other Disorders of Central NS	340-349	0	0	1	4
-Disorders of Peripheral NS	350-359	0	0	0	19
-Disorders of Eye	360-379	0	0	0	8
-Diseases of Ear & Mastoid	380-389	0	0	0	2
CIRCULATORY SYSTEM	390-459	0	0	1	17
-Hypertensive Dis	401-405	0	0	0	9
-Ischemic Heart Dis	410-414	0	0	1	1
-Other Heart Dis	420-429	0	0	0	3
-Cerebrovascular Dis	430-438	0	0	0	1
-Dis of Veins, Lymphatics, Other	451-459	0	0	0	3
RESPIRATORY SYSTEM	460-519	4	2	5	83
-Acute Respiratory Infections	460-466	3	2	3	35

(Continued)

*Only those diagnostic categories and gender/job category combinations with at least one occurrence appear in this table.

Hanford Site 2009

Absence Data

Appendix I. Number of Diagnoses in Each Diagnostic Category by Gender and Job Category*

		Women			
		Job Category			
		Professional	Administrative Support	Technical Support	Service
Diagnostic Category	ICD-9-CM Code				
-Other Dis Upper Respiratory Tract	470-478	1	1	0	1
-Pneumonia & Influenza	480-488	8	13	8	3
-Chronic Obstructive Dis	490-496	0	3	2	2
-Other Respiratory Dis	510-519	1	1	1	0
DIGESTIVE SYSTEM	520-579	3	10	2	1
-Esophagus, Stomach, Duodenum	530-538	0	0	0	0
-Appendicitis	540-543	0	1	0	0
-Hernias	550-553	0	1	1	0
-Enteritis, Colitis	555-558	1	1	0	0
-Other Intestinal Dis	560-569	1	1	1	0
-Other Digestive Dis	570-579	1	6	0	1
GENITOURINARY SYSTEM	580-629	3	11	4	1
-Nephritis, Nephrosis	580-589	0	1	0	0
-Other Urinary Dis	590-599	3	7	2	0
-Breast Disorders	610-612	0	0	0	1
-Pelvic Inflammatory Dis	614-616	0	1	0	0
-Other Female Disorders	617-629	0	2	2	0
SKIN AND SUBCUTANEOUS TISSUE	680-709	1	2	1	0
-Infections	680-686	0	1	0	0
-Other	700-709	1	1	1	0
MUSCULOSKELETAL & CONNECTIVE TISSUE	710-739	32	22	19	11
-Arthropathies	710-719	14	7	6	4
-Dorsopathies	720-724	11	6	11	6
-Rheumatism, Excluding Back	725-729	7	8	2	1
-Other Dis & Acquired Deformities	730-739	0	1	0	0
SYMPTOMS, SIGNS, & ILL-DEFINED CONDITIONS	780-799	5	13	5	4
-Symptoms	780-789	4	10	4	3
-Non-Specific Abnormal Findings	790-796	1	3	1	1
INJURY & POISONING	800-999	7	24	14	0
-Dislocation	830-839	0	1	1	0
-Sprains & Strains - Back	846-847	0	1	2	0
-Sprains & Strains - Other	840-845, 848	3	8	6	0
-Open Wound - Head, Neck, Trunk	870-879	1	0	0	0
-Open Wound - Upper Limb	880-887	0	1	1	0
-Open Wound - Lower Limb	890-897	0	1	0	0

(Continued)

*Only those diagnostic categories and gender/job category combinations with at least one occurrence appear in this table.

Hanford Site 2009

Absence Data

Appendix I. Number of Diagnoses in Each Diagnostic Category by Gender and Job Category*

		Women			
		Job Category			TOTAL
		Security and Fire	Crafts	Line Operators	
Diagnostic Category	ICD-9-CM Code				
-Other Dis Upper Respiratory Tract	470-478	0	0	1	4
-Pneumonia & Influenza	480-488	1	0	1	34
-Chronic Obstructive Dis	490-496	0	0	0	7
-Other Respiratory Dis	510-519	0	0	0	3
DIGESTIVE SYSTEM	520-579	1	1	5	23
-Esophagus, Stomach, Duodenum	530-538	0	1	0	1
-Appendicitis	540-543	0	0	0	1
-Hernias	550-553	0	0	0	2
-Enteritis, Colitis	555-558	1	0	2	5
-Other Intestinal Dis	560-569	0	0	1	4
-Other Digestive Dis	570-579	0	0	2	10
GENITOURINARY SYSTEM	580-629	0	0	0	19
-Nephritis, Nephrosis	580-589	0	0	0	1
-Other Urinary Dis	590-599	0	0	0	12
-Breast Disorders	610-612	0	0	0	1
-Pelvic Inflammatory Dis	614-616	0	0	0	1
-Other Female Disorders	617-629	0	0	0	4
SKIN AND SUBCUTANEOUS TISSUE	680-709	1	0	1	6
-Infections	680-686	0	0	0	1
-Other	700-709	1	0	1	5
MUSCULOSKELETAL & CONNECTIVE TISSUE	710-739	0	8	15	107
-Arthropathies	710-719	0	2	4	37
-Dorsopathies	720-724	0	2	8	44
-Rheumatism, Excluding Back	725-729	0	4	3	25
-Other Dis & Acquired Deformities	730-739	0	0	0	1
SYMPTOMS, SIGNS, & ILL-DEFINED CONDITIONS	780-799	1	0	5	33
-Symptoms	780-789	1	0	5	27
-Non-Specific Abnormal Findings	790-796	0	0	0	6
INJURY & POISONING	800-999	1	1	9	56
-Dislocation	830-839	1	0	0	3
-Sprains & Strains - Back	846-847	0	0	0	3
-Sprains & Strains - Other	840-845, 848	0	1	7	25
-Open Wound - Head, Neck, Trunk	870-879	0	0	0	1
-Open Wound - Upper Limb	880-887	0	0	1	3
-Open Wound - Lower Limb	890-897	0	0	0	1

(Continued)

*Only those diagnostic categories and gender/job category combinations with at least one occurrence appear in this table.

Hanford Site 2009

Absence Data

Appendix I. Number of Diagnoses in Each Diagnostic Category by Gender and Job Category*

		Women			
		Job Category			
		Professional	Administrative Support	Technical Support	Service
Diagnostic Category	ICD-9-CM Code				
-Late Effects of Accident	905-909	0	1	0	0
-Superficial Injury	910-919	1	2	1	0
-Contusion	920-924	0	3	1	0
-Burns	940-949	0	0	1	0
-Poisoning - Medicinal/Biological	960-979	0	2	0	0
-Unspecified Effects - External Causes	990-995	0	0	1	0
-Complications of Surgical/Medical Care	996-999	2	4	0	0
HEALTH STATUS/HEALTH SERVICE CONTACT	V01-V89	249	303	134	41
-Isolation & Prophylactic Measures	V07-V09	0	1	0	0
-Personal & Family History	V10-V19	2	2	1	1
-Health Services Reproduction/Development	V20-V29	4	2	2	0
-Health Status	V40-V49	71	79	33	8
-Specific Procedures/Aftercare	V50-V59	7	9	2	1
-Other Circumstances	V60-V69	164	210	96	31
-Acquired Absence of Organs	V88	1	0	0	0

*Only those diagnostic categories and gender/job category combinations with at least one occurrence appear in this table.

Hanford Site 2009

Absence Data

Appendix I. Number of Diagnoses in Each Diagnostic Category by Gender and Job Category*

		Women			
		Job Category			TOTAL
		Security and Fire	Crafts	Line Operators	
Diagnostic Category	ICD-9-CM Code				
-Late Effects of Accident	905-909	0	0	0	1
-Superficial Injury	910-919	0	0	1	5
-Contusion	920-924	0	0	0	4
-Burns	940-949	0	0	0	1
-Poisoning - Medicinal/Biological	960-979	0	0	0	2
-Unspecified Effects - External Causes	990-995	0	0	0	1
-Complications of Surgical/Medical Care	996-999	0	0	0	6
HEALTH STATUS/HEALTH SERVICE CONTACT	V01-V89	20	20	75	842
-Isolation & Prophylactic Measures	V07-V09	0	0	0	1
-Personal & Family History	V10-V19	0	0	0	6
-Health Services Reproduction/Development	V20-V29	0	0	0	8
-Health Status	V40-V49	3	4	16	214
-Specific Procedures/Aftercare	V50-V59	1	1	1	22
-Other Circumstances	V60-V69	16	15	58	590
-Acquired Absence of Organs	V88	0	0	0	1

	Women							
	Job Category							TOTAL
	Professional	Administrative Support	Technical Support	Service	Security and Fire	Crafts	Line Operators	
Diagnostic Category								
Total	346	461	211	72	30	34	129	1,283

*Only those diagnostic categories and gender/job category combinations with at least one occurrence appear in this table.

Hanford Site 2009

Absence Data

Appendix I. Number of Diagnoses in Each Diagnostic Category by Gender and Job Category*

		Men			
		Job Category			
		Professional	Administrative Support	Technical Support	Service
Diagnostic Category	ICD-9-CM Code				
INFECTIOUS & PARASITIC DISEASES (DIS)	001-139	6	3	5	1
-Intestinal Infectious Dis	001-009	0	0	1	0
-Other Bacterial Dis	030-041	3	0	1	0
-Polio & Other Viral CNS Dis	045-049	0	0	1	0
-Viral Dis with Exanthem	050-059	1	0	2	0
-Arthropod-Borne Viral Dis	060-066	0	2	0	0
-Other Viral Dis & Chlamydiae	070-079	0	0	0	1
-Rickettsioses & Other Arthropod	080-088	1	0	0	0
-Mycoses	110-118	0	1	0	0
-Other Infections & Parasitic Dis	130-136	1	0	0	0
MALIGNANT NEOPLASMS	140-208, 209.0-209.3, 230-234	33	7	5	2
-Digestive & Peritoneal	150-159	9	0	2	0
-Respiratory & Intrathoracic	160-165	1	1	0	0
-Bone, Connective Tissue, Skin	170-173, 176	5	4	2	0
-Breast	174-175	1	0	0	0
-Genitourinary	179-189	10	2	1	1
-Nervous System	190-192	1	0	0	0
-Other & Unspecified Sites	195-199, 209.7	1	0	0	1
-Lymphatic & Hematopoietic	200-208	4	0	0	0
-Carcinoma in situ	230-234	1	0	0	0
BENIGN & UNCERTAIN NEOPLASMS	209.4-209.6, 210-229, 235-239	8	2	7	1
ENDOCRINE/METABOLIC/IMMUNITY	240-279	10	6	10	2
-Thyroid Gland Disorders	240-246	0	0	1	0
-Other Endocrine Gland Dis	249-259	4	5	5	1
-Other Metabolic & Immunity Disorders	270-279	6	1	4	1
MENTAL DISORDERS	290-319	9	1	5	0
-Psychoses	290-299	1	0	0	0
-Non-Psychotic Disorders	300-302, 306-316	6	1	4	0
-Alcohol Dependence	303	1	0	0	0
-Drug Dependence	304-305	1	0	1	0
NERVOUS SYSTEM (NS) & SENSE ORGANS	320-389	21	2	13	5
-Inflammatory Dis of Central NS	320-326	1	0	0	0
-Organic Sleep Disorders	327	1	0	0	0
-Pain	338	0	0	0	0

(Continued)

*Only those diagnostic categories and gender/job category combinations with at least one occurrence appear in this table.

Hanford Site 2009

Absence Data

Appendix I. Number of Diagnoses in Each Diagnostic Category by Gender and Job Category*

		Men			
		Job Category			TOTAL
		Security and Fire	Crafts	Line Operators	
Diagnostic Category	ICD-9-CM Code				
INFECTIOUS & PARASITIC DISEASES (DIS)	001-139	3	2	4	24
-Intestinal Infectious Dis	001-009	0	0	1	2
-Other Bacterial Dis	030-041	0	0	0	4
-Polio & Other Viral CNS Dis	045-049	0	0	0	1
-Viral Dis with Exanthem	050-059	1	0	1	5
-Arthropod-Borne Viral Dis	060-066	0	0	0	2
-Other Viral Dis & Chlamydiae	070-079	2	2	0	5
-Rickettsioses & Other Arthropod	080-088	0	0	0	1
-Mycoses	110-118	0	0	1	2
-Other Infections & Parasitic Dis	130-136	0	0	1	2
MALIGNANT NEOPLASMS	140-208, 209.0-209.3, 230-234	3	4	6	60
-Digestive & Peritoneal	150-159	0	0	0	11
-Respiratory & Intrathoracic	160-165	1	0	1	4
-Bone, Connective Tissue, Skin	170-173, 176	1	2	4	18
-Breast	174-175	0	0	0	1
-Genitourinary	179-189	1	0	1	16
-Nervous System	190-192	0	0	0	1
-Other & Unspecified Sites	195-199, 209.7	0	1	0	3
-Lymphatic & Hematopoietic	200-208	0	1	0	5
-Carcinoma in situ	230-234	0	0	0	1
BENIGN & UNCERTAIN NEOPLASMS	209.4-209.6, 210-229, 235-239	0	5	6	29
ENDOCRINE/METABOLIC/IMMUNITY	240-279	0	5	7	40
-Thyroid Gland Disorders	240-246	0	0	0	1
-Other Endocrine Gland Dis	249-259	0	1	4	20
-Other Metabolic & Immunity Disorders	270-279	0	4	3	19
MENTAL DISORDERS	290-319	1	2	5	23
-Psychoses	290-299	0	0	0	1
-Non-Psychotic Disorders	300-302, 306-316	1	2	5	19
-Alcohol Dependence	303	0	0	0	1
-Drug Dependence	304-305	0	0	0	2
NERVOUS SYSTEM (NS) & SENSE ORGANS	320-389	6	12	13	72
-Inflammatory Dis of Central NS	320-326	0	0	0	1
-Organic Sleep Disorders	327	0	0	0	1
-Pain	338	0	1	1	2

(Continued)

*Only those diagnostic categories and gender/job category combinations with at least one occurrence appear in this table.

Hanford Site 2009

Absence Data

Appendix I. Number of Diagnoses in Each Diagnostic Category by Gender and Job Category*

		Men			
		Job Category			
		Professional	Administrative Support	Technical Support	Service
Diagnostic Category	ICD-9-CM Code				
-Other Disorders of Central NS	340-349	3	0	1	2
-Disorders of Peripheral NS	350-359	7	1	8	1
-Disorders of Eye	360-379	7	0	1	2
-Diseases of Ear & Mastoid	380-389	2	1	3	0
CIRCULATORY SYSTEM	390-459	41	8	18	4
-Chronic Rheumatic Heart Dis	393-398	3	1	0	0
-Hypertensive Dis	401-405	12	3	11	3
-Ischemic Heart Dis	410-414	9	1	0	1
-Dis of Pulmonary Circulation	415-417	1	0	0	0
-Other Heart Dis	420-429	10	2	2	0
-Cerebrovascular Dis	430-438	6	1	1	0
-Dis of Arteries & Capillaries	440-449	0	0	0	0
-Dis of Veins, Lymphatics, Other	451-459	0	0	4	0
RESPIRATORY SYSTEM	460-519	17	2	20	8
-Acute Respiratory Infections	460-466	5	1	8	3
-Other Dis Upper Respiratory Tract	470-478	4	0	1	0
-Pneumonia & Influenza	480-488	8	1	11	5
-Chronic Obstructive Dis	490-496	0	0	0	0
-Other Respiratory Dis	510-519	0	0	0	0
DIGESTIVE SYSTEM	520-579	44	10	11	5
-Oral Cavity, Saliva Glands, Jaw	520-529	1	0	2	0
-Esophagus, Stomach, Duodenum	530-538	2	2	0	1
-Appendicitis	540-543	2	0	1	0
-Hernias	550-553	19	5	6	3
-Enteritis, Colitis	555-558	0	1	0	0
-Other Intestinal Dis	560-569	6	1	1	0
-Other Digestive Dis	570-579	14	1	1	1
GENITOURINARY SYSTEM	580-629	10	2	3	2
-Nephritis, Nephrosis	580-589	1	0	0	0
-Other Urinary Dis	590-599	6	1	3	1
-Male Genital Organ Dis	600-608	3	1	0	1
SKIN AND SUBCUTANEOUS TISSUE	680-709	3	2	6	0
-Infections	680-686	3	2	4	0
-Other Inflammatory Conditions	690-698	0	0	1	0
-Other	700-709	0	0	1	0

(Continued)

*Only those diagnostic categories and gender/job category combinations with at least one occurrence appear in this table.

Hanford Site 2009

Absence Data

Appendix I. Number of Diagnoses in Each Diagnostic Category by Gender and Job Category*

		Men			
		Job Category			TOTAL
		Security and Fire	Crafts	Line Operators	
Diagnostic Category	ICD-9-CM Code				
-Other Disorders of Central NS	340-349	2	1	0	9
-Disorders of Peripheral NS	350-359	0	8	7	32
-Disorders of Eye	360-379	2	1	3	16
-Diseases of Ear & Mastoid	380-389	2	1	2	11
CIRCULATORY SYSTEM	390-459	1	7	26	105
-Chronic Rheumatic Heart Dis	393-398	0	0	0	4
-Hypertensive Dis	401-405	0	1	14	44
-Ischemic Heart Dis	410-414	0	3	3	17
-Dis of Pulmonary Circulation	415-417	0	0	0	1
-Other Heart Dis	420-429	1	1	2	18
-Cerebrovascular Dis	430-438	0	1	2	11
-Dis of Arteries & Capillaries	440-449	0	1	0	1
-Dis of Veins, Lymphatics, Other	451-459	0	0	5	9
RESPIRATORY SYSTEM	460-519	8	25	19	99
-Acute Respiratory Infections	460-466	3	9	8	37
-Other Dis Upper Respiratory Tract	470-478	1	1	2	9
-Pneumonia & Influenza	480-488	4	11	6	46
-Chronic Obstructive Dis	490-496	0	2	2	4
-Other Respiratory Dis	510-519	0	2	1	3
DIGESTIVE SYSTEM	520-579	3	25	15	113
-Oral Cavity, Saliva Glands, Jaw	520-529	1	0	0	4
-Esophagus, Stomach, Duodenum	530-538	0	1	2	8
-Appendicitis	540-543	0	1	0	4
-Hernias	550-553	0	8	11	52
-Enteritis, Colitis	555-558	1	2	1	5
-Other Intestinal Dis	560-569	1	5	1	15
-Other Digestive Dis	570-579	0	8	0	25
GENITOURINARY SYSTEM	580-629	3	3	9	32
-Nephritis, Nephrosis	580-589	0	1	0	2
-Other Urinary Dis	590-599	2	0	6	19
-Male Genital Organ Dis	600-608	1	2	3	11
SKIN AND SUBCUTANEOUS TISSUE	680-709	4	8	7	30
-Infections	680-686	2	3	4	18
-Other Inflammatory Conditions	690-698	1	0	0	2
-Other	700-709	1	5	3	10

(Continued)

*Only those diagnostic categories and gender/job category combinations with at least one occurrence appear in this table.

Hanford Site 2009

Absence Data

Appendix I. Number of Diagnoses in Each Diagnostic Category by Gender and Job Category*

		Men			
		Job Category			
		Professional	Administrative Support	Technical Support	Service
Diagnostic Category	ICD-9-CM Code				
MUSCULOSKELETAL & CONNECTIVE TISSUE	710-739	51	5	21	23
-Arthropathies	710-719	23	2	6	12
-Dorsopathies	720-724	15	0	6	7
-Rheumatism, Excluding Back	725-729	11	3	8	3
-Other Dis & Acquired Deformities	730-739	2	0	1	1
CONGENITAL ANOMALIES	740-759	0	1	0	0
SYMPTOMS, SIGNS, & ILL-DEFINED CONDITIONS	780-799	24	10	16	11
-Symptoms	780-789	13	8	12	10
-Non-Specific Abnormal Findings	790-796	11	2	4	1
INJURY & POISONING	800-999	37	7	27	24
-Fracture - Skull	800-804	1	0	0	0
-Fracture - Upper Limb	810-819	1	0	1	0
-Dislocation	830-839	2	0	2	0
-Sprains & Strains - Back	846-847	2	1	1	1
-Sprains & Strains - Other	840-845, 848	9	5	8	11
-Intracranial Injury	850-854	1	0	1	0
-Internal Injury - Thorax, Abdomen, Pelvis	860-869	1	0	0	0
-Open Wound - Head, Neck, Trunk	870-879	3	0	0	0
-Open Wound - Upper Limb	880-887	6	0	4	3
-Open Wound - Lower Limb	890-897	1	1	1	1
-Late Effects of Accident	905-909	0	0	0	0
-Superficial Injury	910-919	3	0	4	2
-Contusion	920-924	1	0	0	0
-Crushing Injury	925-929	0	0	0	2
-Foreign Body Entering Orifice	930-939	0	0	0	1
-Burns	940-949	1	0	0	0
-Poisoning - Medicinal/Biological	960-979	0	0	0	2
-Toxic Effects - Non-medicinal	980-989	4	0	3	1
-Unspecified Effects - External Causes	990-995	0	0	1	0
-Complications of Surgical/Medical Care	996-999	1	0	1	0
HEALTH STATUS/HEALTH SERVICE CONTACT	V01-V89	495	99	235	115
-Communicable Dis	V01-V06	0	0	0	0
-Isolation & Prophylactic Measures	V07-V09	1	0	0	0
-Personal & Family History	V10-V19	4	1	3	1

(Continued)

*Only those diagnostic categories and gender/job category combinations with at least one occurrence appear in this table.

Hanford Site 2009

Absence Data

Appendix I. Number of Diagnoses in Each Diagnostic Category by Gender and Job Category*

		Men			
		Job Category			TOTAL
		Security and Fire	Crafts	Line Operators	
Diagnostic Category	ICD-9-CM Code				
MUSCULOSKELETAL & CONNECTIVE TISSUE	710-739	34	50	41	225
-Arthropathies	710-719	12	22	13	90
-Dorsopathies	720-724	15	20	18	81
-Rheumatism, Excluding Back	725-729	5	7	9	46
-Other Dis & Acquired Deformities	730-739	2	1	1	8
CONGENITAL ANOMALIES	740-759	0	0	0	1
SYMPTOMS, SIGNS, & ILL-DEFINED CONDITIONS	780-799	6	22	17	106
-Symptoms	780-789	5	10	14	72
-Non-Specific Abnormal Findings	790-796	1	12	3	34
INJURY & POISONING	800-999	27	32	35	189
-Fracture - Skull	800-804	0	0	0	1
-Fracture - Upper Limb	810-819	0	0	0	2
-Dislocation	830-839	1	1	2	8
-Sprains & Strains - Back	846-847	3	4	3	15
-Sprains & Strains - Other	840-845, 848	10	11	14	68
-Intracranial Injury	850-854	0	1	0	3
-Internal Injury - Thorax, Abdomen, Pelvis	860-869	0	0	2	3
-Open Wound - Head, Neck, Trunk	870-879	1	1	0	5
-Open Wound - Upper Limb	880-887	2	4	2	21
-Open Wound - Lower Limb	890-897	1	0	0	5
-Late Effects of Accident	905-909	0	0	1	1
-Superficial Injury	910-919	2	1	4	16
-Contusion	920-924	4	2	2	9
-Crushing Injury	925-929	0	0	0	2
-Foreign Body Entering Orifice	930-939	0	0	0	1
-Burns	940-949	1	1	0	3
-Poisoning - Medicinal/Biological	960-979	0	1	0	3
-Toxic Effects - Non-medicinal	980-989	1	3	3	15
-Unspecified Effects - External Causes	990-995	1	0	0	2
-Complications of Surgical/Medical Care	996-999	0	2	2	6
HEALTH STATUS/HEALTH SERVICE CONTACT	V01-V89	156	291	276	1,667
-Communicable Dis	V01-V06	0	0	1	1
-Isolation & Prophylactic Measures	V07-V09	0	0	0	1
-Personal & Family History	V10-V19	0	1	3	13

(Continued)

*Only those diagnostic categories and gender/job category combinations with at least one occurrence appear in this table.

Hanford Site 2009

Absence Data

Appendix I. Number of Diagnoses in Each Diagnostic Category by Gender and Job Category*

		Men			
		Job Category			
		Professional	Administrative Support	Technical Support	Service
Diagnostic Category	ICD-9-CM Code				
-Health Services Reproduction/Development	V20-V29	0	0	0	0
-Health Status	V40-V49	172	34	68	31
-Specific Procedures/Aftercare	V50-V59	17	3	6	0
-Other Circumstances	V60-V69	299	61	157	81
-Examination & Investigation	V70-V82	2	0	1	2
-Other Specified Exposures	V87	0	0	0	0

*Only those diagnostic categories and gender/job category combinations with at least one occurrence appear in this table.

Hanford Site 2009

Absence Data

Appendix I. Number of Diagnoses in Each Diagnostic Category by Gender and Job Category*

		Men			
		Job Category			TOTAL
		Security and Fire	Crafts	Line Operators	
Diagnostic Category	ICD-9-CM Code				
-Health Services Reproduction/Development	V20-V29	0	1	0	1
-Health Status	V40-V49	28	95	76	504
-Specific Procedures/Aftercare	V50-V59	4	5	10	45
-Other Circumstances	V60-V69	121	188	185	1,092
-Examination & Investigation	V70-V82	3	0	1	9
-Other Specified Exposures	V87	0	1	0	1

	Men							
	Job Category							TOTAL
	Professional	Administrative Support	Technical Support	Service	Security and Fire	Crafts	Line Operators	
Diagnostic Category								
Total	809	167	402	203	255	493	486	2,815

*Only those diagnostic categories and gender/job category combinations with at least one occurrence appear in this table.

Hanford Site 2009

Absence Data

Appendix J. Total Number of Calendar Days Absent in Each Diagnostic Category by Gender and Job Category*

		Women			
		Job Category			
		Professional	Administrative Support	Technical Support	Service
Diagnostic Category	ICD-9-CM Code				
INFECTIOUS & PARASITIC DISEASES (DIS)	001-139	52	122	11	6
MALIGNANT NEOPLASMS	140-208, 209.0-209.3, 230-234	66	188	22	4
BENIGN & UNCERTAIN NEOPLASMS	209.4-209.6, 210-229, 235-239	106	271	0	0
ENDOCRINE/METABOLIC/IMMUNITY	240-279	0	89	0	0
MENTAL DISORDERS	290-319	176	254	35	574
NERVOUS SYSTEM (NS) & SENSE ORGANS	320-389	406	534	482	227
CIRCULATORY SYSTEM	390-459	58	206	63	0
RESPIRATORY SYSTEM	460-519	166	367	152	105
DIGESTIVE SYSTEM	520-579	95	195	146	38
GENITOURINARY SYSTEM	580-629	76	304	107	7
SKIN AND SUBCUTANEOUS TISSUE	680-709	1	17	25	0
MUSCULOSKELETAL & CONNECTIVE TISSUE	710-739	523	541	829	442
SYMPTOMS, SIGNS, & ILL-DEFINED CONDITIONS	780-799	19	239	76	109
INJURY & POISONING	800-999	143	643	229	0

*Absences with >1 ICD-9-CM code in the same diagnostic category were counted only once. Only those diagnostic categories and gender/job category combinations with at least one occurrence appear in this table.

Hanford Site 2009

Absence Data

Appendix J. Total Number of Calendar Days Absent in Each Diagnostic Category by Gender and Job Category*

		Women			
		Job Category			TOTAL
		Security and Fire	Crafts	Line Operators	
Diagnostic Category	ICD-9-CM Code				
INFECTIOUS & PARASITIC DISEASES (DIS)	001-139	0	0	19	210
MALIGNANT NEOPLASMS	140-208, 209.0-209.3, 230-234	0	0	0	280
BENIGN & UNCERTAIN NEOPLASMS	209.4-209.6, 210-229, 235-239	0	0	7	384
ENDOCRINE/METABOLIC/IMMUNITY	240-279	0	0	39	128
MENTAL DISORDERS	290-319	39	305	185	1,568
NERVOUS SYSTEM (NS) & SENSE ORGANS	320-389	0	0	402	2,051
CIRCULATORY SYSTEM	390-459	0	0	6	333
RESPIRATORY SYSTEM	460-519	40	18	97	945
DIGESTIVE SYSTEM	520-579	5	15	120	614
GENITOURINARY SYSTEM	580-629	0	0	0	494
SKIN AND SUBCUTANEOUS TISSUE	680-709	7	0	7	57
MUSCULOSKELETAL & CONNECTIVE TISSUE	710-739	0	419	781	3,535
SYMPTOMS, SIGNS, & ILL-DEFINED CONDITIONS	780-799	10	0	131	584
INJURY & POISONING	800-999	19	20	667	1,721

*Absences with >1 ICD-9-CM code in the same diagnostic category were counted only once. Only those diagnostic categories and gender/job category combinations with at least one occurrence appear in this table.

Hanford Site 2009

Absence Data

Appendix J. Total Number of Calendar Days Absent in Each Diagnostic Category by Gender and Job Category*

		Men			
		Job Category			
		Professional	Administrative Support	Technical Support	Service
Diagnostic Category	ICD-9-CM Code				
INFECTIOUS & PARASITIC DISEASES (DIS)	001-139	259	121	170	20
MALIGNANT NEOPLASMS	140-208, 209.0-209.3, 230-234	1,573	37	229	116
BENIGN & UNCERTAIN NEOPLASMS	209.4-209.6, 210-229, 235-239	320	15	36	2
ENDOCRINE/METABOLIC/IMMUNITY	240-279	250	156	232	190
MENTAL DISORDERS	290-319	294	41	121	0
NERVOUS SYSTEM (NS) & SENSE ORGANS	320-389	303	24	662	404
CIRCULATORY SYSTEM	390-459	1,364	138	497	72
RESPIRATORY SYSTEM	460-519	175	55	269	208
DIGESTIVE SYSTEM	520-579	804	287	298	90
GENITOURINARY SYSTEM	580-629	84	21	11	60
SKIN AND SUBCUTANEOUS TISSUE	680-709	29	32	99	0
MUSCULOSKELETAL & CONNECTIVE TISSUE	710-739	937	54	1,020	939
CONGENITAL ANOMALIES	740-759	0	1	0	0
SYMPTOMS, SIGNS, & ILL-DEFINED CONDITIONS	780-799	308	135	178	519
INJURY & POISONING	800-999	538	241	472	513

*Absences with >1 ICD-9-CM code in the same diagnostic category were counted only once. Only those diagnostic categories and gender/job category combinations with at least one occurrence appear in this table.

Hanford Site 2009

Absence Data

Appendix J. Total Number of Calendar Days Absent in Each Diagnostic Category by Gender and Job Category*

		Men			
		Job Category			TOTAL
		Security and Fire	Crafts	Line Operators	
Diagnostic Category	ICD-9-CM Code				
INFECTIOUS & PARASITIC DISEASES (DIS)	001-139	39	28	59	696
MALIGNANT NEOPLASMS	140-208, 209.0-209.3, 230-234	123	194	248	2,520
BENIGN & UNCERTAIN NEOPLASMS	209.4-209.6, 210-229, 235-239	0	32	107	512
ENDOCRINE/METABOLIC/IMMUNITY	240-279	0	116	112	1,056
MENTAL DISORDERS	290-319	1,202	68	176	1,902
NERVOUS SYSTEM (NS) & SENSE ORGANS	320-389	1,369	398	2,936	6,096
CIRCULATORY SYSTEM	390-459	5	151	773	3,000
RESPIRATORY SYSTEM	460-519	91	319	238	1,355
DIGESTIVE SYSTEM	520-579	20	606	633	2,738
GENITOURINARY SYSTEM	580-629	92	99	115	482
SKIN AND SUBCUTANEOUS TISSUE	680-709	109	124	236	629
MUSCULOSKELETAL & CONNECTIVE TISSUE	710-739	2,463	2,552	1,501	9,466
CONGENITAL ANOMALIES	740-759	0	0	0	1
SYMPTOMS, SIGNS, & ILL-DEFINED CONDITIONS	780-799	89	766	263	2,258
INJURY & POISONING	800-999	409	1,695	1,733	5,601

*Absences with >1 ICD-9-CM code in the same diagnostic category were counted only once. Only those diagnostic categories and gender/job category combinations with at least one occurrence appear in this table.

Hanford Site 2009

Absence Data

Appendix K. Age-Adjusted Illness and Injury Rates by Diagnostic Category*

Part 1. Men

		Number of Diagnoses	Age-Adjusted Rate per 1,000**	Lower 95% Confidence Limit per 1,000	Upper 95% Confidence Limit per 1,000
Diagnostic Category	ICD-9-CM Code				
INFECTIOUS & PARASITIC DISEASES (DIS)	001-139	24	2.1	1.3	3.3
-Intestinal Infectious Dis	001-009	2	0.2	0.0	0.7
-Other Bacterial Dis	030-041	4	0.3	0.1	0.7
-Polio & Other Viral CNS Dis	045-049	1	0.1	0.0	0.6
-Viral Dis with Exanthem	050-059	5	0.3	0.1	0.8
-Arthropod-Borne Viral Dis	060-066	2	0.1	0.0	0.5
-Other Viral Dis & Chlamydiae	070-079	5	0.5	0.2	1.2
-Rickettsioses & Other Arthropod	080-088	1	0.1	0.0	0.6
-Mycoses	110-118	2	0.4	0.1	1.5
-Other Infections & Parasitic Dis	130-136	2	0.2	0.0	1.0
MALIGNANT NEOPLASMS	140-208, 209.0-209.3, 230-234	60	4.2	3.2	5.5
-Digestive & Peritoneal	150-159	11	0.8	0.4	1.5
-Respiratory & Intrathoracic	160-165	4	0.3	0.1	0.8
-Bone, Connective Tissue, Skin	170-173, 176	18	1.4	0.8	2.3
-Breast	174-175	1	0.0	0.0	0.3
-Genitourinary	179-189	16	1.0	0.6	1.7
-Nervous System	190-192	1	0.1	0.0	0.6
-Other & Unspecified Sites	195-199, 209.7	3	0.2	0.1	0.6
-Lymphatic & Hematopoietic	200-208	5	0.4	0.1	0.9
-Carcinoma in situ	230-234	1	0.0	0.0	0.3
BENIGN & UNCERTAIN NEOPLASMS	209.4-209.6, 210-229, 235-239	29	2.5	1.7	3.8
ENDOCRINE/METABOLIC/IMMUNITY	240-279	40	2.8	2.0	4.1
-Thyroid Gland Disorders	240-246	1	0.0	0.0	0.3
-Other Endocrine Gland Dis	249-259	20	1.2	0.7	1.8
-Other Metabolic & Immunity Disorders	270-279	19	1.6	1.0	2.8
MENTAL DISORDERS	290-319	23	2.2	1.3	3.5
-Psychoses	290-299	1	0.1	0.0	0.6
-Non-Psychotic Disorders	300-302, 306-316	19	1.8	1.0	3.0
-Alcohol Dependence	303	1	0.1	0.0	0.6
-Drug Dependence	304-305	2	0.2	0.1	1.0
NERVOUS SYSTEM (NS) & SENSE ORGANS	320-389	72	5.8	4.5	7.5
-Inflammatory Dis of Central NS	320-326	1	0.1	0.0	0.6
-Organic Sleep Disorders	327	1	0.1	0.0	0.6

(Continued)

*Only those diagnostic categories with at least one occurrence appear in this table.

**Standardized to age distribution of 2000 U.S. population.

Hanford Site 2009

Absence Data

Appendix K. Age-Adjusted Illness and Injury Rates by Diagnostic Category*

Part 1. Men

		Number of Diagnoses	Age-Adjusted Rate per 1,000**	Lower 95% Confidence Limit per 1,000	Upper 95% Confidence Limit per 1,000
Diagnostic Category	ICD-9-CM Code				
-Pain	338	2	0.1	0.0	0.5
-Other Disorders of Central NS	340-349	9	1.1	0.5	2.3
-Disorders of Peripheral NS	350-359	32	2.5	1.7	3.6
-Disorders of Eye	360-379	16	1.0	0.6	1.7
-Diseases of Ear & Mastoid	380-389	11	0.9	0.5	1.7
CIRCULATORY SYSTEM	390-459	105	7.5	6.1	9.2
-Chronic Rheumatic Heart Dis	393-398	4	0.2	0.1	0.6
-Hypertensive Dis	401-405	44	3.1	2.3	4.2
-Ischemic Heart Dis	410-414	17	1.1	0.7	1.9
-Dis of Pulmonary Circulation	415-417	1	0.0	0.0	0.3
-Other Heart Dis	420-429	18	1.2	0.7	1.9
-Cerebrovascular Dis	430-438	11	0.7	0.4	1.3
-Dis of Arteries & Capillaries	440-449	1	0.1	0.0	0.6
-Dis of Veins, Lymphatics, Other	451-459	9	1.0	0.4	2.2
RESPIRATORY SYSTEM	460-519	99	9.5	7.6	11.8
-Acute Respiratory Infections	460-466	37	3.0	2.1	4.4
-Other Dis Upper Respiratory Tract	470-478	9	1.0	0.5	2.1
-Pneumonia & Influenza	480-488	46	4.9	3.5	6.8
-Chronic Obstructive Dis	490-496	4	0.3	0.1	0.8
-Other Respiratory Dis	510-519	3	0.2	0.1	0.7
DIGESTIVE SYSTEM	520-579	113	8.2	6.7	10.0
-Oral Cavity, Saliva Glands, Jaw	520-529	4	0.3	0.1	1.0
-Esophagus, Stomach, Duodenum	530-538	8	0.5	0.2	0.9
-Appendicitis	540-543	4	0.3	0.1	1.0
-Hernias	550-553	52	3.9	2.9	5.3
-Enteritis, Colitis	555-558	5	0.4	0.2	0.9
-Other Intestinal Dis	560-569	15	1.2	0.7	2.1
-Other Digestive Dis	570-579	25	1.5	1.0	2.3
GENITOURINARY SYSTEM	580-629	32	2.5	1.7	3.6
-Nephritis, Nephrosis	580-589	2	0.1	0.0	0.4
-Other Urinary Dis	590-599	19	1.5	0.9	2.5
-Male Genital Organ Dis	600-608	11	0.9	0.4	1.7
SKIN AND SUBCUTANEOUS TISSUE	680-709	30	2.2	1.5	3.4
-Infections	680-686	18	1.2	0.7	2.0
-Other Inflammatory Conditions	690-698	2	0.1	0.0	0.5

(Continued)

*Only those diagnostic categories with at least one occurrence appear in this table.

**Standardized to age distribution of 2000 U.S. population.

Hanford Site 2009

Absence Data

Appendix K. Age-Adjusted Illness and Injury Rates by Diagnostic Category*

Part 1. Men

		Number of Diagnoses	Age-Adjusted Rate per 1,000**	Lower 95% Confidence Limit per 1,000	Upper 95% Confidence Limit per 1,000
Diagnostic Category	ICD-9-CM Code				
-Other	700-709	10	0.9	0.4	1.9
MUSCULOSKELETAL & CONNECTIVE TISSUE	710-739	225	19.1	16.4	22.2
-Arthropathies	710-719	90	7.8	6.1	9.9
-Dorsopathies	720-724	81	7.1	5.5	9.1
-Rheumatism, Excluding Back	725-729	46	3.5	2.5	4.8
-Other Dis & Acquired Deformities	730-739	8	0.8	0.4	1.7
CONGENITAL ANOMALIES	740-759	1	0.0	0.0	0.3
SYMPTOMS, SIGNS, & ILL-DEFINED CONDITIONS	780-799	106	9.3	7.5	11.6
-Symptoms	780-789	72	6.1	4.6	7.9
-Non-Specific Abnormal Findings	790-796	34	3.2	2.2	4.7
INJURY & POISONING	800-999	189	18.4	15.6	21.7
-Fracture - Skull	800-804	1	0.1	0.0	0.6
-Fracture - Upper Limb	810-819	2	0.3	0.1	1.4
-Dislocation	830-839	8	0.7	0.3	1.6
-Sprains & Strains - Back	846-847	15	1.7	1.0	2.9
-Sprains & Strains - Other	840-845, 848	68	6.0	4.6	7.9
-Intracranial Injury	850-854	3	0.2	0.1	0.7
-Internal Injury - Thorax, Abdomen, Pelvis	860-869	3	0.2	0.1	0.7
-Open Wound - Head, Neck, Trunk	870-879	31	3.0	2.0	4.5
-Late Effects of Accident	905-909	1	0.2	0.0	1.1
-Superficial Injury	910-919	16	1.7	0.9	3.0
-Contusion	920-924	9	1.1	0.5	2.3
-Crushing Injury	925-929	2	0.3	0.1	1.4
-Foreign Body Entering Orifice	930-939	1	0.2	0.0	1.6
-Burns	940-949	3	0.4	0.1	1.5
-Poisoning - Medicinal/Biological	960-979	3	0.5	0.2	1.5
-Toxic Effects - Non-medicinal	980-989	15	1.1	0.6	2.1
-Unspecified Effects - External Causes	990-995	2	0.1	0.0	0.6
-Complications of Surgical/Medical Care	996-999	6	0.5	0.2	1.3
Total		1148	96.2	90.0	102.8

*Only those diagnostic categories with at least one occurrence appear in this table.

**Standardized to age distribution of 2000 U.S. population.

Hanford Site 2009

Absence Data

Appendix K. Age-Adjusted Illness and Injury Rates by Diagnostic Category*

Part 2. Women

		Number of Diagnoses	Age-Adjusted Rate per 1,000**	Lower 95% Confidence Limit per 1,000	Upper 95% Confidence Limit per 1,000
Diagnostic Category	ICD-9-CM Code				
INFECTIOUS & PARASITIC DISEASES (DIS)	001-139	11	2.6	1.4	4.9
-Intestinal Infectious Dis	001-009	4	0.7	0.2	1.8
-Other Bacterial Dis	030-041	1	0.3	0.0	2.2
-Viral Dis with Exanthem	050-059	3	0.8	0.2	2.6
-Other Viral Dis & Chlamydiae	070-079	2	0.7	0.2	2.8
-Mycoses	110-118	1	0.1	0.0	1.0
MALIGNANT NEOPLASMS	140-208, 209.0-209.3, 230-234	11	1.9	1.0	3.5
-Digestive & Peritoneal	150-159	1	0.2	0.0	1.4
-Respiratory & Intrathoracic	160-165	1	0.1	0.0	1.0
-Bone, Connective Tissue, Skin	170-173, 176	4	0.8	0.3	2.2
-Breast	174-175	5	0.8	0.3	1.9
BENIGN & UNCERTAIN NEOPLASMS	209.4-209.6, 210-229, 235-239	9	1.6	0.8	3.0
ENDOCRINE/METABOLIC/IMMUNITY	240-279	8	1.2	0.6	2.4
-Thyroid Gland Disorders	240-246	2	0.3	0.1	1.1
-Other Endocrine Gland Dis	249-259	2	0.3	0.1	1.1
-Nutritional Deficiencies	260-269	1	0.1	0.0	1.0
-Other Metabolic & Immunity Disorders	270-279	3	0.5	0.2	1.5
MENTAL DISORDERS	290-319	20	4.7	2.9	7.5
-Non-Psychotic Disorders	300-302, 306-316	18	4.2	2.5	6.9
-Drug Dependence	304-305	2	0.5	0.1	2.1
NERVOUS SYSTEM (NS) & SENSE ORGANS	320-389	38	7.1	5.1	9.9
-Pain	338	5	0.9	0.4	2.1
-Other Disorders of Central NS	340-349	4	0.7	0.2	1.8
-Disorders of Peripheral NS	350-359	19	3.4	2.1	5.4
-Disorders of Eye	360-379	8	1.8	0.9	3.9
-Diseases of Ear & Mastoid	380-389	2	0.4	0.1	1.5
CIRCULATORY SYSTEM	390-459	17	3.4	2.0	5.6
-Hypertensive Dis	401-405	9	1.4	0.7	2.7
-Ischemic Heart Dis	410-414	1	0.3	0.0	2.2
-Other Heart Dis	420-429	3	0.8	0.3	2.8
-Cerebrovascular Dis	430-438	1	0.1	0.0	1.0
-Dis of Veins, Lymphatics, Other	451-459	3	0.7	0.2	2.2
RESPIRATORY SYSTEM	460-519	83	18.4	14.6	23.3

(Continued)

*Only those diagnostic categories with at least one occurrence appear in this table.

**Standardized to age distribution of 2000 U.S. population.

Hanford Site 2009

Absence Data

Appendix K. Age-Adjusted Illness and Injury Rates by Diagnostic Category*

Part 2. Women

		Number of Diagnoses	Age-Adjusted Rate per 1,000**	Lower 95% Confidence Limit per 1,000	Upper 95% Confidence Limit per 1,000
Diagnostic Category	ICD-9-CM Code				
-Acute Respiratory Infections	460-466	35	7.0	4.9	9.9
-Other Dis Upper Respiratory Tract	470-478	4	0.7	0.3	2.1
-Pneumonia & Influenza	480-488	34	8.2	5.7	11.8
-Chronic Obstructive Dis	490-496	7	1.6	0.7	3.7
-Other Respiratory Dis	510-519	3	0.9	0.3	2.9
DIGESTIVE SYSTEM	520-579	23	4.4	2.8	6.9
-Esophagus, Stomach, Duodenum	530-538	1	0.1	0.0	1.0
-Appendicitis	540-543	1	0.2	0.0	1.4
-Hernias	550-553	2	0.7	0.2	2.6
-Enteritis, Colitis	555-558	5	1.2	0.5	3.0
-Other Intestinal Dis	560-569	4	0.6	0.2	1.5
-Other Digestive Dis	570-579	10	1.7	0.9	3.3
GENITOURINARY SYSTEM	580-629	19	4.1	2.5	6.6
-Nephritis, Nephrosis	580-589	1	0.3	0.0	2.4
-Other Urinary Dis	590-599	12	2.5	1.4	4.7
-Breast Disorders	610-612	1	0.2	0.0	1.4
-Pelvic Inflammatory Dis	614-616	1	0.2	0.0	1.4
-Other Female Disorders	617-629	4	0.8	0.3	2.3
SKIN AND SUBCUTANEOUS TISSUE	680-709	6	1.2	0.5	2.7
-Infections	680-686	1	0.2	0.0	1.4
-Other	700-709	5	1.0	0.4	2.4
MUSCULOSKELETAL & CONNECTIVE TISSUE	710-739	107	23.0	18.8	28.2
-Arthropathies	710-719	37	7.5	5.3	10.6
-Dorsopathies	720-724	44	9.3	6.8	12.8
-Rheumatism, Excluding Back	725-729	25	5.9	3.9	9.1
-Other Dis & Acquired Deformities	730-739	1	0.2	0.0	1.4
SYMPTOMS, SIGNS, & ILL-DEFINED CONDITIONS	780-799	33	7.3	5.1	10.5
-Symptoms	780-789	27	6.0	4.0	8.9
-Non-Specific Abnormal Findings	790-796	6	1.3	0.6	3.2
INJURY & POISONING	800-999	56	13.3	10.0	17.6
-Dislocation	830-839	3	0.7	0.2	2.2
-Sprains & Strains - Back	846-847	3	0.8	0.2	2.5
-Sprains & Strains - Other	840-845, 848	25	5.1	3.4	7.8
-Open Wound - Head, Neck, Trunk	870-879	5	1.4	0.6	3.6

(Continued)

*Only those diagnostic categories with at least one occurrence appear in this table.

**Standardized to age distribution of 2000 U.S. population.

Hanford Site 2009

Absence Data

Appendix K. Age-Adjusted Illness and Injury Rates by Diagnostic Category*

Part 2. Women

		Number of Diagnoses	Age-Adjusted Rate per 1,000**	Lower 95% Confidence Limit per 1,000	Upper 95% Confidence Limit per 1,000
Diagnostic Category	ICD-9-CM Code				
-Late Effects of Accident	905-909	1	0.1	0.0	1.0
-Superficial Injury	910-919	5	1.6	0.6	3.9
-Contusion	920-924	4	1.2	0.4	3.3
-Burns	940-949	1	0.3	0.0	2.2
-Poisoning - Medicinal/Biological	960-979	2	0.7	0.2	2.9
-Unspecified Effects - External Causes	990-995	1	0.3	0.0	2.2
-Complications of Surgical/Medical Care	996-999	6	1.1	0.5	2.5
Total		441	94.1	85.1	104.0

*Only those diagnostic categories with at least one occurrence appear in this table.

**Standardized to age distribution of 2000 U.S. population.

Hanford Site 2009

Absence Data

Appendix K. Age-Adjusted Illness and Injury Rates by Diagnostic Category*

Part 3. Men and Women

		Number of Diagnoses	Age-Adjusted Rate per 1,000**	Lower 95% Confidence Limit per 1,000	Upper 95% Confidence Limit per 1,000
Diagnostic Category	ICD-9-CM Code				
INFECTIOUS & PARASITIC DISEASES (DIS)	001-139	35	2.3	1.6	3.2
-Intestinal Infectious Dis	001-009	6	0.3	0.1	0.7
-Other Bacterial Dis	030-041	5	0.3	0.1	0.8
-Polio & Other Viral CNS Dis	045-049	1	0.1	0.0	0.4
-Viral Dis with Exanthem	050-059	8	0.4	0.2	0.9
-Arthropod-Borne Viral Dis	060-066	2	0.1	0.0	0.4
-Other Viral Dis & Chlamydiae	070-079	7	0.6	0.3	1.3
-Rickettsioses & Other Arthropod	080-088	1	0.1	0.0	0.5
-Mycoses	110-118	3	0.3	0.1	1.0
-Other Infections & Parasitic Dis	130-136	2	0.1	0.0	0.7
MALIGNANT NEOPLASMS	140-208, 209.0-209.3, 230-234	71	3.7	2.9	4.8
-Digestive & Peritoneal	150-159	12	0.7	0.4	1.2
-Respiratory & Intrathoracic	160-165	5	0.3	0.1	0.6
-Bone, Connective Tissue, Skin	170-173, 176	22	1.2	0.8	1.9
-Breast	174-175	6	0.3	0.1	0.6
-Genitourinary	179-189	16	0.8	0.5	1.3
-Nervous System	190-192	1	0.1	0.0	0.5
-Other & Unspecified Sites	195-199, 209.7	3	0.1	0.0	0.5
-Lymphatic & Hematopoietic	200-208	5	0.3	0.1	0.7
-Carcinoma in situ	230-234	1	0.0	0.0	0.3
BENIGN & UNCERTAIN NEOPLASMS	209.4-209.6, 210-229, 235-239	38	2.2	1.6	3.2
ENDOCRINE/METABOLIC/IMMUNITY	240-279	48	2.4	1.7	3.2
-Thyroid Gland Disorders	240-246	3	0.1	0.0	0.3
-Other Endocrine Gland Dis	249-259	22	0.9	0.6	1.4
-Nutritional Deficiencies	260-269	1	0.0	0.0	0.3
-Other Metabolic & Immunity Disorders	270-279	22	1.3	0.8	2.1
MENTAL DISORDERS	290-319	43	3.0	2.1	4.2
-Psychoses	290-299	1	0.1	0.0	0.4
-Non-Psychotic Disorders	300-302, 306-316	37	2.5	1.8	3.7
-Alcohol Dependence	303	1	0.1	0.0	0.4
-Drug Dependence	304-305	4	0.3	0.1	0.9
NERVOUS SYSTEM (NS) & SENSE ORGANS	320-389	110	6.2	5.1	7.6
-Inflammatory Dis of Central NS	320-326	1	0.1	0.0	0.5

(Continued)

*Only those diagnostic categories with at least one occurrence appear in this table.

**Standardized to age distribution of 2000 U.S. population.

Hanford Site 2009

Absence Data

Appendix K. Age-Adjusted Illness and Injury Rates by Diagnostic Category*

Part 3. Men and Women

		Number of Diagnoses	Age-Adjusted Rate per 1,000**	Lower 95% Confidence Limit per 1,000	Upper 95% Confidence Limit per 1,000
Diagnostic Category	ICD-9-CM Code				
-Organic Sleep Disorders	327	1	0.1	0.0	0.4
-Pain	338	7	0.3	0.2	0.7
-Other Disorders of Central NS	340-349	13	0.9	0.5	1.7
-Disorders of Peripheral NS	350-359	51	2.8	2.1	3.7
-Disorders of Eye	360-379	24	1.3	0.8	2.0
-Diseases of Ear & Mastoid	380-389	13	0.8	0.5	1.4
CIRCULATORY SYSTEM	390-459	122	6.6	5.4	8.0
-Chronic Rheumatic Heart Dis	393-398	4	0.2	0.1	0.5
-Hypertensive Dis	401-405	53	2.7	2.0	3.5
-Ischemic Heart Dis	410-414	18	1.0	0.6	1.6
-Dis of Pulmonary Circulation	415-417	1	0.0	0.0	0.3
-Other Heart Dis	420-429	21	1.2	0.7	1.9
-Cerebrovascular Dis	430-438	12	0.6	0.3	1.0
-Dis of Arteries & Capillaries	440-449	1	0.1	0.0	0.5
-Dis of Veins, Lymphatics, Other	451-459	12	0.9	0.5	1.7
RESPIRATORY SYSTEM	460-519	182	11.9	10.1	14.0
-Acute Respiratory Infections	460-466	72	4.1	3.2	5.3
-Other Dis Upper Respiratory Tract	470-478	13	0.9	0.5	1.6
-Pneumonia & Influenza	480-488	80	5.9	4.6	7.5
-Chronic Obstructive Dis	490-496	11	0.6	0.3	1.3
-Other Respiratory Dis	510-519	6	0.4	0.2	1.0
DIGESTIVE SYSTEM	520-579	136	7.2	6.0	8.6
-Oral Cavity, Saliva Glands, Jaw	520-529	4	0.2	0.1	0.7
-Esophagus, Stomach, Duodenum	530-538	9	0.4	0.2	0.8
-Appendicitis	540-543	5	0.3	0.1	0.8
-Hernias	550-553	54	3.0	2.3	4.0
-Enteritis, Colitis	555-558	10	0.7	0.3	1.3
-Other Intestinal Dis	560-569	19	1.0	0.6	1.6
-Other Digestive Dis	570-579	35	1.6	1.2	2.3
GENITOURINARY SYSTEM	580-629	51	3.0	2.2	4.0
-Nephritis, Nephrosis	580-589	3	0.1	0.0	0.5
-Other Urinary Dis	590-599	31	1.9	1.3	2.7
-Male Genital Organ Dis	600-608	11	0.6	0.3	1.2
-Breast Disorders	610-612	1	0.1	0.0	0.4
-Pelvic Inflammatory Dis	614-616	1	0.1	0.0	0.4

(Continued)

*Only those diagnostic categories with at least one occurrence appear in this table.

**Standardized to age distribution of 2000 U.S. population.

Hanford Site 2009

Absence Data

Appendix K. Age-Adjusted Illness and Injury Rates by Diagnostic Category*

Part 3. Men and Women

		Number of Diagnoses	Age-Adjusted Rate per 1,000**	Lower 95% Confidence Limit per 1,000	Upper 95% Confidence Limit per 1,000
Diagnostic Category	ICD-9-CM Code				
-Other Female Disorders	617-629	4	0.3	0.1	0.7
SKIN AND SUBCUTANEOUS TISSUE	680-709	36	1.9	1.3	2.8
-Infections	680-686	19	0.9	0.5	1.5
-Other Inflammatory Conditions	690-698	2	0.1	0.0	0.4
-Other	700-709	15	0.9	0.5	1.7
MUSCULOSKELETAL & CONNECTIVE TISSUE	710-739	332	19.8	17.6	22.4
-Arthropathies	710-719	127	7.5	6.2	9.1
-Dorsopathies	720-724	125	7.7	6.3	9.3
-Rheumatism, Excluding Back	725-729	71	4.1	3.2	5.3
-Other Dis & Acquired Deformities	730-739	9	0.6	0.3	1.2
CONGENITAL ANOMALIES	740-759	1	0.0	0.0	0.3
SYMPTOMS, SIGNS, & ILL-DEFINED CONDITIONS	780-799	139	8.6	7.2	10.4
-Symptoms	780-789	99	6.0	4.8	7.5
-Non-Specific Abnormal Findings	790-796	40	2.6	1.8	3.6
INJURY & POISONING	800-999	245	16.7	14.5	19.2
-Fracture - Skull	800-804	1	0.1	0.0	0.5
-Fracture - Upper Limb	810-819	2	0.2	0.0	0.9
-Dislocation	830-839	11	0.7	0.3	1.3
-Sprains & Strains - Back	846-847	18	1.4	0.8	2.3
-Sprains & Strains - Other	840-845, 848	93	5.7	4.5	7.1
-Intracranial Injury	850-854	3	0.2	0.1	0.5
-Internal Injury - Thorax, Abdomen, Pelvis	860-869	3	0.2	0.0	0.5
-Open Wound - Head, Neck, Trunk	870-879	36	2.5	1.7	3.7
-Late Effects of Accident	905-909	2	0.1	0.0	0.7
-Superficial Injury	910-919	21	1.6	1.0	2.6
-Contusion	920-924	13	1.2	0.7	2.1
-Crushing Injury	925-929	2	0.2	0.0	0.9
-Foreign Body Entering Orifice	930-939	1	0.1	0.0	1.0
-Burns	940-949	4	0.4	0.1	1.1
-Poisoning - Medicinal/Biological	960-979	5	0.5	0.2	1.3
-Toxic Effects - Non-medicinal	980-989	15	0.8	0.5	1.4
-Unspecified Effects - External Causes	990-995	3	0.2	0.1	0.7
-Complications of Surgical/Medical Care	996-999	12	0.7	0.4	1.3
Total		1589	95.6	90.5	101.0

*Only those diagnostic categories with at least one occurrence appear in this table.

**Standardized to age distribution of 2000 U.S. population.

Hanford Site 2009
OSHA Data

Appendix L. Number of Workers with at Least One OSHA Event by Gender, Age, and Job Category*

Job Category	Women					Men					TOTAL
	Age Group				TOTAL	Age Group				TOTAL	
	16 - 29	30 - 39	40 - 49	50 +		16 - 29	30 - 39	40 - 49	50 +		
Professional	0	0	1	7	8	0	2	5	15	22	30
Administrative Support	2	1	1	5	9	0	0	0	6	6	15
Technical Support	0	0	1	1	2	0	1	4	0	5	7
Service	0	1	2	1	4	6	4	6	7	23	27
Crafts	0	0	0	2	2	5	8	12	17	42	44
Line Operators	0	0	0	1	1	1	1	2	2	6	7
TOTAL	2	2	5	17	26	12	16	29	47	104	130

*Only those job categories and gender/age combinations with at least one OSHA event appear in this table.

Appendix M. Total Number of Workdays Lost or with Restricted Activity from OSHA Events by Gender and Age

Age Group	Women			Men			TOTAL		
	Number of Events	Days Restricted	Days Lost	Number of Events	Days Restricted	Days Lost	Number of Events	Days Restricted	Days Lost
16 - 29	2	0	0	12	255	0	14	255	0
30 - 39	2	0	0	19	266	4	21	266	4
40 - 49	5	0	48	32	281	355	37	281	403
50 +	17	127	436	47	426	312	64	553	748
TOTAL	26	127	484	110	1228	671	136	1355	1155

Appendix N. Total Number of Workdays Lost or with Restricted Activity from OSHA Events by Gender and Job Category*

Job Category	Women			Men			TOTAL		
	Number of Events	Days Restricted	Days Lost	Number of Events	Days Restricted	Days Lost	Number of Events	Days Restricted	Days Lost
Professional	8	127	152	23	184	30	31	311	182
Administrative Support	9	0	37	6	13	6	15	13	43
Technical Support	2	0	206	5	14	41	7	14	247
Service	4	0	52	25	382	149	29	382	201
Crafts	2	0	13	44	635	441	46	635	454
Line Operators	1	0	24	7	0	4	8	0	28
TOTAL	26	127	484	110	1228	671	136	1355	1155

*Only those job categories with at least one OSHA event appear in this table.

Hanford Site 2009

OSHA Data

Appendix O. Number of Diagnoses in Each Diagnostic Category by Gender and Age*

		Women				
		Age Group				TOTAL
		16 - 29	30 - 39	40 - 49	50 +	
Diagnostic Category	ICD-9-CM code					
NERVOUS SYSTEM (NS) & SENSE ORGANS	320-389	0	1	0	4	5
-Disorders of Peripheral NS	350-359	0	1	0	2	3
-Disorders of Eye	360-379	0	0	0	2	2
SKIN AND SUBCUTANEOUS TISSUE	680-709	0	0	0	0	0
-Infections	680-686	0	0	0	0	0
-Other Inflammatory Conditions	690-698	0	0	0	0	0
MUSCULOSKELETAL & CONNECTIVE TISSUE	710-739	0	0	1	6	7
-Arthropathies	710-719	0	0	0	1	1
-Dorsopathies	720-724	0	0	1	1	2
-Rheumatism, Excluding Back	725-729	0	0	0	4	4
SYMPTOMS, SIGNS, & ILL-DEFINED CONDITIONS	780-799	0	0	0	0	0
-Symptoms	780-789	0	0	0	0	0
INJURY & POISONING	800-999	2	1	5	15	23
-Fracture - Upper Limb	810-819	0	1	0	0	1
-Fracture - Lower Limb	820-829	0	0	1	1	2
-Dislocation	830-839	0	0	0	1	1
-Sprains & Strains - Back	846-847	0	0	1	2	3
-Sprains & Strains - Other	840-845, 848	1	0	1	7	9
-Intracranial Injury	850-854	0	0	0	0	0
-Open Wound - Head, Neck, Trunk	870-879	0	0	0	0	0
-Open Wound - Upper Limb	880-887	1	0	0	0	1
-Superficial Injury	910-919	0	0	1	0	1
-Contusion	920-924	0	0	0	1	1
-Foreign Body Entering Orifice	930-939	0	0	0	0	0
-Burns	940-949	0	0	0	0	0
-Complications & Unspecified Injuries	958-959	0	0	1	2	3
-Toxic Effects - Non-medicinal	980-989	0	0	0	0	0
-Unspecified Effects - External Causes	990-995	0	0	0	1	1

*Only those diagnostic categories and gender/age combinations with at least one OSHA event appear in this table.

Hanford Site 2009

OSHA Data

Appendix O. Number of Diagnoses in Each Diagnostic Category by Gender and Age*

		Men					
		Age Group				TOTAL	
		16 - 29	30 - 39	40 - 49	50 +		
Diagnostic Category	ICD-9-CM code						
NERVOUS SYSTEM (NS) & SENSE ORGANS	320-389	0	1	0	0	1	6
-Disorders of Peripheral NS	350-359	0	0	0	0	0	3
-Disorders of Eye	360-379	0	1	0	0	1	3
SKIN AND SUBCUTANEOUS TISSUE	680-709	0	0	1	1	2	2
-Infections	680-686	0	0	1	0	1	1
-Other Inflammatory Conditions	690-698	0	0	0	1	1	1
MUSCULOSKELETAL & CONNECTIVE TISSUE	710-739	0	5	7	16	28	35
-Arthropathies	710-719	0	5	2	5	12	13
-Dorsopathies	720-724	0	0	3	7	10	12
-Rheumatism, Excluding Back	725-729	0	0	2	4	6	10
SYMPTOMS, SIGNS, & ILL-DEFINED CONDITIONS	780-799	0	0	1	0	1	1
-Symptoms	780-789	0	0	1	0	1	1
INJURY & POISONING	800-999	14	19	38	49	120	143
-Fracture - Upper Limb	810-819	4	2	5	5	16	17
-Fracture - Lower Limb	820-829	1	2	1	5	9	11
-Dislocation	830-839	0	0	1	0	1	2
-Sprains & Strains - Back	846-847	3	1	4	7	15	18
-Sprains & Strains - Other	840-845, 848	1	2	6	5	14	23
-Intracranial Injury	850-854	1	0	1	0	2	2
-Open Wound - Head, Neck, Trunk	870-879	0	3	2	6	11	11
-Open Wound - Upper Limb	880-887	1	6	3	9	19	20
-Superficial Injury	910-919	0	0	1	0	1	2
-Contusion	920-924	1	0	3	4	8	9
-Foreign Body Entering Orifice	930-939	1	1	2	0	4	4
-Burns	940-949	0	0	0	3	3	3
-Complications & Unspecified Injuries	958-959	1	1	8	4	14	17
-Toxic Effects - Non-medicinal	980-989	0	1	1	1	3	3
-Unspecified Effects - External Causes	990-995	0	0	0	0	0	1

	Women					Men					
	Age Group				TOTAL	Age Group				TOTAL	
	16 - 29	30 - 39	40 - 49	50 +		16 - 29	30 - 39	40 - 49	50 +		
Diagnostic Category											
Total	2	2	6	25	35	14	25	47	66	152	187

*Only those diagnostic categories and gender/age combinations with at least one OSHA event appear in this table.

Hanford Site 2009

OSHA Data

Appendix P. Number of Workdays Lost or with Restricted Activity in Each Diagnostic Category by Gender and Age*

		Women							
		Age Group							
		16 - 29		30 - 39		40 - 49		50 +	
		Days Restricted	Days Lost	Days Restricted	Days Lost	Days Restricted	Days Lost	Days Restricted	Days Lost
Diagnostic Category	ICD-9-CM Codes								
-Disorders of Peripheral NS	350-359	0	0	0	0	0	0	0	13
-Disorders of Eye	360-379	0	0	0	0	0	0	0	0
-Arthropathies	710-719	0	0	0	0	0	0	0	4
-Dorsopathies	720-724	0	0	0	0	0	0	127	43
-Rheumatism, Excluding Back	725-729	0	0	0	0	0	0	0	4
-Fracture - Upper Limb	810-819	0	0	0	0	0	0	0	0
-Fracture - Lower Limb	820-829	0	0	0	0	0	0	0	0
-Dislocation	830-839	0	0	0	0	0	0	0	30
-Sprains & Strains - Back	846-847	0	0	0	0	0	0	127	43
-Sprains & Strains - Other	840-845, 848	0	0	0	0	0	26	0	309
-Open Wound - Upper Limb	880-887	0	0	0	0	0	0	0	0
-Superficial Injury	910-919	0	0	0	0	0	0	0	0
-Contusion	920-924	0	0	0	0	0	0	0	37
-Complications & Unspecified Injuries	958-959	0	0	0	0	0	22	0	30
-Unspecified Effects - External Causes	990-995	0	0	0	0	0	0	0	0

		Men							
		Age Group							
		16 - 29		30 - 39		40 - 49		50 +	
		Days Restricted	Days Lost	Days Restricted	Days Lost	Days Restricted	Days Lost	Days Restricted	Days Lost
Diagnostic Category	ICD-9-CM Codes								
-Disorders of Eye	360-379	0	0	0	0	0	0	0	0
-Infections	680-686	0	0	0	0	0	0	0	0
-Other Inflammatory Conditions	690-698	0	0	0	0	0	0	0	0
-Arthropathies	710-719	0	0	70	0	0	0	31	0
-Dorsopathies	720-724	0	0	0	0	0	8	36	55
-Rheumatism, Excluding Back	725-729	0	0	0	0	0	41	0	0
-Symptoms	780-789	0	0	0	0	0	41	0	0
-Fracture - Upper Limb	810-819	0	0	0	4	121	0	239	23
-Fracture - Lower Limb	820-829	135	0	166	0	0	180	95	219
-Dislocation	830-839	0	0	0	0	0	0	0	0
-Sprains & Strains - Back	846-847	49	0	30	0	0	19	54	25
-Sprains & Strains - Other	840-845, 848	9	0	70	0	10	63	31	9

(Continued)

*OSHA events with >1 ICD-9-CM code in the same diagnostic category were counted only once. Only those diagnostic categories and gender/age combinations with at least one occurrence appear in this table.

Hanford Site 2009

OSHA Data

Appendix P. Number of Workdays Lost or with Restricted Activity in Each Diagnostic Category by Gender and Age*

		Men							
		Age Group							
		16 - 29		30 - 39		40 - 49		50 +	
		Days Restricted	Days Lost	Days Restricted	Days Lost	Days Restricted	Days Lost	Days Restricted	Days Lost
Diagnostic Category	ICD-9-CM Codes								
-Intracranial Injury	850-854	2	0	0	0	0	0	0	0
-Open Wound - Head, Neck, Trunk	870-879	0	0	0	0	0	0	0	0
-Open Wound - Upper Limb	880-887	60	0	0	0	0	0	0	0
-Superficial Injury	910-919	0	0	0	0	0	0	0	0
-Contusion	920-924	2	0	0	0	0	0	6	31
-Foreign Body Entering Orifice	930-939	0	0	0	0	0	0	0	0
-Burns	940-949	0	0	0	0	0	0	0	0
-Complications & Unspecified Injuries	958-959	0	0	0	0	150	232	0	0
-Toxic Effects - Non-medicinal	980-989	0	0	0	0	0	0	0	0

*OSHA events with >1 ICD-9-CM code in the same diagnostic category were counted only once. Only those diagnostic categories and gender/age combinations with at least one occurrence appear in this table.

Hanford Site 2009
OSHA Data

Appendix Q. Number of Occurrences in Each Accident Category by Gender and Age*

		Women				
		Age Group				TOTAL
		16 - 29	30 - 39	40 - 49	50 +	
Type of Accident	E Codes					
Motor Vehicle Nontraffic	E820-E825	0	0	0	1	1
Falls	E880-E888	1	0	1	5	7
Natural/Environmental Factors	E900-E909	0	0	1	1	2
Submersion/Suffocation/Foreign Bodies	E910-E915	0	0	0	0	0
Other Accidents	E916-E928	1	2	3	10	16

		Men					
		Age Group				TOTAL	
		16 - 29	30 - 39	40 - 49	50 +		
Type of Accident	E Codes						
Motor Vehicle Nontraffic	E820-E825	0	0	1	0	1	2
Falls	E880-E888	2	1	6	12	21	28
Natural/Environmental Factors	E900-E909	0	1	2	1	4	6
Submersion/Suffocation/Foreign Bodies	E910-E915	1	1	4	0	6	6
Other Accidents	E916-E928	9	16	19	33	77	93

*Only those accident types and gender/age combinations with at least one occurrence appear in this table.

Hanford Site 2009
OSHA Data

Appendix R. Number of Workdays Lost or with Restricted Activity in Each Accident Category by Gender and Age*

		Women							
		Age Group							
		16 - 29		30 - 39		40 - 49		50 +	
		Days Restricted	Days Lost	Days Restricted	Days Lost	Days Restricted	Days Lost	Days Restricted	Days Lost
Type of Accident	E Codes								
Motor Vehicle Nontraffic	E820-E825	0	0	0	0	0	0	0	105
Falls	E880-E888	0	0	0	0	0	0	0	247
Natural/Environmental Factors	E900-E909	0	0	0	0	0	0	0	0
Other Accidents	E916-E928	0	0	0	0	0	48	127	84

		Men							
		Age Group							
		16 - 29		30 - 39		40 - 49		50 +	
		Days Restricted	Days Lost	Days Restricted	Days Lost	Days Restricted	Days Lost	Days Restricted	Days Lost
Type of Accident	E Codes								
Motor Vehicle Nontraffic	E820-E825	0	0	0	0	0	0	0	0
Falls	E880-E888	137	0	45	0	14	243	233	276
Natural/Environmental Factors	E900-E909	0	0	0	0	0	0	0	0
Submersion/Suffocation/Foreign Bodies	E910-E915	0	0	0	0	0	0	0	0
Other Accidents	E916-E928	118	0	221	4	267	112	193	36

*OSHA events with >1 E code in the same accident type were counted only once. Only those accident types and gender/age combinations with at least one occurrence appear in this table.

Hanford Site 2009

OSHA Data

Appendix S. Number of Diagnoses in Each Diagnostic Category by Gender and Job Category*

		Women						
		Job Category						TOTAL
		Professional	Administrative Support	Technical Support	Service	Crafts	Line Operators	
Diagnostic Category	ICD-9-CM Code							
NERVOUS SYSTEM (NS) & SENSE ORGANS	320-389	2	2	0	0	1	0	5
-Disorders of Peripheral NS	350-359	0	2	0	0	1	0	3
-Disorders of Eye	360-379	2	0	0	0	0	0	2
MUSCULOSKELETAL & CONNECTIVE TISSUE	710-739	4	2	0	1	0	0	7
-Arthropathies	710-719	1	0	0	0	0	0	1
-Dorsopathies	720-724	1	0	0	1	0	0	2
-Rheumatism, Excluding Back	725-729	2	2	0	0	0	0	4
INJURY & POISONING	800-999	7	7	2	5	1	1	23
-Fracture - Upper Limb	810-819	0	0	0	1	0	0	1
-Fracture - Lower Limb	820-829	0	2	0	0	0	0	2
-Dislocation	830-839	0	0	0	1	0	0	1
-Sprains & Strains - Back	846-847	2	0	0	1	0	0	3
-Sprains & Strains - Other	840-845, 848	3	2	2	0	1	1	9
-Open Wound - Upper Limb	880-887	0	1	0	0	0	0	1
-Superficial Injury	910-919	1	0	0	0	0	0	1
-Contusion	920-924	0	1	0	0	0	0	1
-Complications & Unspecified Injuries	958-959	0	1	0	2	0	0	3
-Unspecified Effects - External Causes	990-995	1	0	0	0	0	0	1

	Women						
	Job Category						TOTAL
	Professional	Administrative Support	Technical Support	Service	Crafts	Line Operators	
Diagnostic Category							
Total	13	11	2	6	2	1	35

*Only those diagnostic categories and gender/job category combinations with at least one occurrence appear in this table.

Hanford Site 2009

OSHA Data

Appendix S. Number of Diagnoses in Each Diagnostic Category by Gender and Job Category*

		Men						
		Job Category						TOTAL
		Professional	Administrative Support	Technical Support	Service	Crafts	Line Operators	
Diagnostic Category	ICD-9-CM Code							
NERVOUS SYSTEM (NS) & SENSE ORGANS	320-389	0	0	0	0	1	0	1
-Disorders of Eye	360-379	0	0	0	0	1	0	1
SKIN AND SUBCUTANEOUS TISSUE	680-709	1	1	0	0	0	0	2
-Infections	680-686	1	0	0	0	0	0	1
-Other Inflammatory Conditions	690-698	0	1	0	0	0	0	1
MUSCULOSKELETAL & CONNECTIVE TISSUE	710-739	12	4	2	2	6	2	28
-Arthropathies	710-719	5	0	1	2	3	1	12
-Dorsopathies	720-724	4	3	0	0	3	0	10
-Rheumatism, Excluding Back	725-729	3	1	1	0	0	1	6
SYMPTOMS, SIGNS, & ILL-DEFINED CONDITIONS	780-799	0	0	1	0	0	0	1
-Symptoms	780-789	0	0	1	0	0	0	1
INJURY & POISONING	800-999	21	5	7	29	50	8	120
-Fracture - Upper Limb	810-819	1	0	0	6	6	3	16
-Fracture - Lower Limb	820-829	2	0	0	3	4	0	9
-Dislocation	830-839	0	0	0	0	1	0	1
-Sprains & Strains - Back	846-847	4	2	0	3	6	0	15
-Sprains & Strains - Other	840-845, 848	1	0	1	5	5	2	14
-Intracranial Injury	850-854	1	0	0	0	1	0	2
-Open Wound - Head, Neck, Trunk	870-879	4	1	0	1	5	0	11
-Open Wound - Upper Limb	880-887	0	1	1	6	11	0	19
-Superficial Injury	910-919	0	0	0	1	0	0	1
-Contusion	920-924	2	1	1	1	3	0	8
-Foreign Body Entering Orifice	930-939	0	0	0	2	2	0	4
-Burns	940-949	1	0	0	0	0	2	3
-Complications & Unspecified Injuries	958-959	3	0	4	1	6	0	14
-Toxic Effects - Non-medicinal	980-989	2	0	0	0	0	1	3

*Only those diagnostic categories and gender/job category combinations with at least one occurrence appear in this table.

Hanford Site 2009**OSHA Data****Appendix S. Number of Diagnoses in Each Diagnostic Category by Gender and Job Category***

	Men						
	Job Category						TOTAL
	Professional	Administrative Support	Technical Support	Service	Crafts	Line Operators	
Diagnostic Category							
Total	34	10	10	31	57	10	152

*Only those diagnostic categories and gender/job category combinations with at least one occurrence appear in this table.

Hanford Site 2009

OSHA Data

Appendix T. Number of Workdays Lost or with Restricted Activity in Each Diagnostic Category by Gender and Job Category*

		Women					
		Job Category					
		Professional		Administrative Support		Technical Support	
		Days Restricted	Days Lost	Days Restricted	Days Lost	Days Restricted	Days Lost
Diagnostic Category	ICD-9-CM Codes						
-Disorders of Peripheral NS	350-359	0	0	0	0	0	0
-Disorders of Eye	360-379	0	0	0	0	0	0
-Arthropathies	710-719	0	4	0	0	0	0
-Dorsopathies	720-724	127	43	0	0	0	0
-Rheumatism, Excluding Back	725-729	0	4	0	0	0	0
-Fracture - Upper Limb	810-819	0	0	0	0	0	0
-Fracture - Lower Limb	820-829	0	0	0	0	0	0
-Dislocation	830-839	0	0	0	0	0	0
-Sprains & Strains - Back	846-847	127	43	0	0	0	0
-Sprains & Strains - Other	840-845, 848	0	105	0	0	0	206
-Open Wound - Upper Limb	880-887	0	0	0	0	0	0
-Superficial Injury	910-919	0	0	0	0	0	0
-Contusion	920-924	0	0	0	37	0	0
-Complications & Unspecified Injuries	958-959	0	0	0	0	0	0
-Unspecified Effects - External Causes	990-995	0	0	0	0	0	0

*OSHA events with >1 ICD-9-CM code in the same diagnostic category were counted only once. Only those diagnostic categories and gender/job category combinations with at least one occurrence appear in this table.

Hanford Site 2009

OSHA Data

Appendix T. Number of Workdays Lost or with Restricted Activity in Each Diagnostic Category by Gender and Job Category*

		Women					
		Job Category					
		Service		Crafts		Line Operators	
		Days Restricted	Days Lost	Days Restricted	Days Lost	Days Restricted	Days Lost
Diagnostic Category	ICD-9-CM Codes						
-Disorders of Peripheral NS	350-359	0	0	0	13	0	0
-Disorders of Eye	360-379	0	0	0	0	0	0
-Arthropathies	710-719	0	0	0	0	0	0
-Dorsopathies	720-724	0	0	0	0	0	0
-Rheumatism, Excluding Back	725-729	0	0	0	0	0	0
-Fracture - Upper Limb	810-819	0	0	0	0	0	0
-Fracture - Lower Limb	820-829	0	0	0	0	0	0
-Dislocation	830-839	0	30	0	0	0	0
-Sprains & Strains - Back	846-847	0	0	0	0	0	0
-Sprains & Strains - Other	840-845, 848	0	0	0	0	0	24
-Open Wound - Upper Limb	880-887	0	0	0	0	0	0
-Superficial Injury	910-919	0	0	0	0	0	0
-Contusion	920-924	0	0	0	0	0	0
-Complications & Unspecified Injuries	958-959	0	52	0	0	0	0
-Unspecified Effects - External Causes	990-995	0	0	0	0	0	0

*OSHA events with >1 ICD-9-CM code in the same diagnostic category were counted only once. Only those diagnostic categories and gender/job category combinations with at least one occurrence appear in this table.

Hanford Site 2009

OSHA Data

Appendix T. Number of Workdays Lost or with Restricted Activity in Each Diagnostic Category by Gender and Job Category*

		Men					
		Job Category					
		Professional		Administrative Support		Technical Support	
		Days Restricted	Days Lost	Days Restricted	Days Lost	Days Restricted	Days Lost
Diagnostic Category	ICD-9-CM Codes						
-Disorders of Eye	360-379	0	0	0	0	0	0
-Infections	680-686	0	0	0	0	0	0
-Other Inflammatory Conditions	690-698	0	0	0	0	0	0
-Arthropathies	710-719	0	0	0	0	0	0
-Dorsopathies	720-724	29	30	7	0	0	0
-Rheumatism, Excluding Back	725-729	0	0	0	0	0	41
-Symptoms	780-789	0	0	0	0	0	41
-Fracture - Upper Limb	810-819	0	0	0	0	0	0
-Fracture - Lower Limb	820-829	0	0	0	0	0	0
-Dislocation	830-839	0	0	0	0	0	0
-Sprains & Strains - Back	846-847	47	0	7	0	0	0
-Sprains & Strains - Other	840-845, 848	0	0	0	0	0	0
-Intracranial Injury	850-854	0	0	0	0	0	0
-Open Wound - Head, Neck, Trunk	870-879	0	0	0	0	0	0
-Open Wound - Upper Limb	880-887	0	0	0	0	0	0
-Superficial Injury	910-919	0	0	0	0	0	0
-Contusion	920-924	0	0	6	6	0	0
-Foreign Body Entering Orifice	930-939	0	0	0	0	0	0
-Burns	940-949	0	0	0	0	0	0
-Complications & Unspecified Injuries	958-959	136	0	0	0	14	0
-Toxic Effects - Non-medicinal	980-989	0	0	0	0	0	0

*OSHA events with >1 ICD-9-CM code in the same diagnostic category were counted only once. Only those diagnostic categories and gender/job category combinations with at least one occurrence appear in this table.

Hanford Site 2009

OSHA Data

Appendix T. Number of Workdays Lost or with Restricted Activity in Each Diagnostic Category by Gender and Job Category*

		Men					
		Job Category					
		Service		Crafts		Line Operators	
		Days Restricted	Days Lost	Days Restricted	Days Lost	Days Restricted	Days Lost
Diagnostic Category	ICD-9-CM Codes						
-Disorders of Eye	360-379	0	0	0	0	0	0
-Infections	680-686	0	0	0	0	0	0
-Other Inflammatory Conditions	690-698	0	0	0	0	0	0
-Arthropathies	710-719	25	0	76	0	0	0
-Dorsopathies	720-724	0	0	0	33	0	0
-Rheumatism, Excluding Back	725-729	0	0	0	0	0	0
-Symptoms	780-789	0	0	0	0	0	0
-Fracture - Upper Limb	810-819	151	0	209	23	0	4
-Fracture - Lower Limb	820-829	87	140	309	259	0	0
-Dislocation	830-839	0	0	0	0	0	0
-Sprains & Strains - Back	846-847	49	0	30	44	0	0
-Sprains & Strains - Other	840-845, 848	35	9	85	63	0	0
-Intracranial Injury	850-854	0	0	2	0	0	0
-Open Wound - Head, Neck, Trunk	870-879	0	0	0	0	0	0
-Open Wound - Upper Limb	880-887	60	0	0	0	0	0
-Superficial Injury	910-919	0	0	0	0	0	0
-Contusion	920-924	0	0	2	25	0	0
-Foreign Body Entering Orifice	930-939	0	0	0	0	0	0
-Burns	940-949	0	0	0	0	0	0
-Complications & Unspecified Injuries	958-959	0	0	0	232	0	0
-Toxic Effects - Non-medicinal	980-989	0	0	0	0	0	0

*OSHA events with >1 ICD-9-CM code in the same diagnostic category were counted only once. Only those diagnostic categories and gender/job category combinations with at least one occurrence appear in this table.

Hanford Site 2009

OSHA Data

Appendix U. Number of Occurrences in Each Accident Category by Gender and Job Category*

		Women						
		Job Category						TOTAL
		Professional	Administrative Support	Technical Support	Service	Crafts	Line Operators	
Type of Accident	E CODES							
Motor Vehicle Nontraffic	E820-E825	1	0	0	0	0	0	1
Falls	E880-E888	2	3	1	1	0	0	7
Natural/Environmental Factors	E900-E909	2	0	0	0	0	0	2
Other Accidents	E916-E928	3	6	1	3	2	1	16

		Men						
		Job Category						TOTAL
		Professional	Administrative Support	Technical Support	Service	Crafts	Line Operators	
Type of Accident	E CODES							
Motor Vehicle Nontraffic	E820-E825	1	0	0	0	0	0	1
Falls	E880-E888	5	0	2	3	11	0	21
Natural/Environmental Factors	E900-E909	2	0	0	1	0	1	4
Submersion/Suffocation/Foreign Bodies	E910-E915	0	0	0	2	4	0	6
Other Accidents	E916-E928	15	5	3	19	29	6	77

*Only those accident types and gender/job category combinations with at least one occurrence appear in this table.

Hanford Site 2009

OSHA Data

Appendix V. Number of Workdays Lost or with Restricted Activity in Each Accident Category by Gender and Job Category*

		Women					
		Job Category					
		Professional		Administrative Support		Technical Support	
		Days Restricted	Days Lost	Days Restricted	Days Lost	Days Restricted	Days Lost
Type of Accident	E Codes						
Motor Vehicle Nontraffic	E820-E825	0	105	0	0	0	0
Falls	E880-E888	0	0	0	37	0	180
Natural/Environmental Factors	E900-E909	0	0	0	0	0	0
Other Accidents	E916-E928	127	47	0	0	0	26

		Women					
		Job Category					
		Service		Crafts		Line Operators	
		Days Restricted	Days Lost	Days Restricted	Days Lost	Days Restricted	Days Lost
Type of Accident	E Codes						
Motor Vehicle Nontraffic	E820-E825	0	0	0	0	0	0
Falls	E880-E888	0	30	0	0	0	0
Natural/Environmental Factors	E900-E909	0	0	0	0	0	0
Other Accidents	E916-E928	0	22	0	13	0	24

*OSHA events with >1 E code in the same accident type were counted only once. Only those accident types and gender/job category combinations with at least one occurrence appear in this table.

Hanford Site 2009

OSHA Data

Appendix V. Number of Workdays Lost or with Restricted Activity in Each Accident Category by Gender and Job Category*

		Men					
		Job Category					
		Professional		Administrative Support		Technical Support	
		Days Restricted	Days Lost	Days Restricted	Days Lost	Days Restricted	Days Lost
Type of Accident	E Codes						
Motor Vehicle Nontraffic	E820-E825	0	0	0	0	0	0
Falls	E880-E888	0	0	0	0	14	0
Natural/Environmental Factors	E900-E909	0	0	0	0	0	0
Submersion/Suffocation/Foreign Bodies	E910-E915	0	0	0	0	0	0
Other Accidents	E916-E928	184	30	13	6	0	41

		Men					
		Job Category					
		Service		Crafts		Line Operators	
		Days Restricted	Days Lost	Days Restricted	Days Lost	Days Restricted	Days Lost
Type of Accident	E Codes						
Motor Vehicle Nontraffic	E820-E825	0	0	0	0	0	0
Falls	E880-E888	40	149	375	370	0	0
Natural/Environmental Factors	E900-E909	0	0	0	0	0	0
Submersion/Suffocation/Foreign Bodies	E910-E915	0	0	0	0	0	0
Other Accidents	E916-E928	342	0	260	71	0	4

*OSHA events with >1 E code in the same accident type were counted only once. Only those accident types and gender/job category combinations with at least one occurrence appear in this table.

Hanford Site 2009

OSHA Data

Appendix W. Age-Adjusted OSHA Illness and Injury Rates by Diagnostic Category*

Part 1. Men

		Number of Diagnoses	Age-Adjusted Rate per 1,000**	Lower 95% Confidence Limit per 1,000	Upper 95% Confidence Limit per 1,000
Diagnostic Category	ICD-9-CM Code				
NERVOUS SYSTEM (NS) & SENSE ORGANS	320-389	1	0.2	0.0	1.1
-Disorders of Eye	360-379	1	0.2	0.0	1.1
SKIN AND SUBCUTANEOUS TISSUE	680-709	2	0.1	0.0	0.5
-Infections	680-686	1	0.1	0.0	0.6
-Other Inflammatory Conditions	690-698	1	0.0	0.0	0.3
MUSCULOSKELETAL & CONNECTIVE TISSUE	710-739	28	2.4	1.6	3.6
-Arthropathies	710-719	12	1.4	0.7	2.5
-Dorsopathies	720-724	10	0.7	0.3	1.3
-Rheumatism, Excluding Back	725-729	6	0.4	0.2	0.9
SYMPTOMS, SIGNS, & ILL-DEFINED CONDITIONS	780-799	1	0.1	0.0	0.6
-Symptoms	780-789	1	0.1	0.0	0.6
INJURY & POISONING	800-999	120	12.3	10.0	15.0
-Fracture - Upper Limb	810-819	16	1.8	1.0	3.3
-Fracture - Lower Limb	820-829	9	0.9	0.4	1.9
-Dislocation	830-839	1	0.1	0.0	0.6
-Sprains & Strains - Back	846-847	15	1.6	0.9	2.9
-Sprains & Strains - Other	840-845, 848	14	1.3	0.7	2.4
-Open Wound - Head, Neck, Trunk	870-879	11	1.0	0.5	2.0
-Open Wound - Upper Limb	880-887	19	2.0	1.2	3.2
-Superficial Injury	910-919	1	0.1	0.0	0.6
-Contusion	920-924	8	0.8	0.4	1.7
-Foreign Body Entering Orifice	930-939	4	0.5	0.2	1.6
-Burns	940-949	3	0.2	0.1	0.6
-Toxic Effects - Non-medicinal	980-989	3	0.3	0.1	1.1
-Complications of Surgical/Medical Care	996-999	16	1.7	1.0	2.8
Total		152	15.1	12.6	18.0

*Only those diagnostic categories with at least one occurrence appear in this table.

**Standardized to age distribution of 2000 U.S. population.

Hanford Site 2009

OSHA Data

Appendix W. Age-Adjusted OSHA Illness and Injury Rates by Diagnostic Category*

Part 2. Women

		Number of Diagnoses	Age-Adjusted Rate per 1,000**	Lower 95% Confidence Limit per 1,000	Upper 95% Confidence Limit per 1,000
Diagnostic Category	ICD-9-CM Code				
NERVOUS SYSTEM (NS) & SENSE ORGANS	320-389	5	1.1	0.4	2.8
-Disorders of Peripheral NS	350-359	3	0.8	0.2	2.6
-Disorders of Eye	360-379	2	0.3	0.1	1.1
MUSCULOSKELETAL & CONNECTIVE TISSUE	710-739	7	1.0	0.5	2.2
-Arthropathies	710-719	1	0.1	0.0	1.0
-Dorsopathies	720-724	2	0.3	0.1	1.3
-Rheumatism, Excluding Back	725-729	4	0.6	0.2	1.5
INJURY & POISONING	800-999	23	4.9	3.2	7.7
-Fracture - Upper Limb	810-819	1	0.3	0.0	2.2
-Fracture - Lower Limb	820-829	2	0.3	0.1	1.3
-Dislocation	830-839	1	0.1	0.0	1.0
-Sprains & Strains - Back	846-847	3	0.7	0.2	2.2
-Sprains & Strains - Other	840-845, 848	9	2.2	1.1	4.4
-Open Wound - Upper Limb	880-887	1	0.4	0.1	2.7
-Superficial Injury	910-919	1	0.2	0.0	1.4
-Contusion	920-924	1	0.1	0.0	1.0
-Toxic Effects - Non-medicinal	980-989	1	0.1	0.0	1.0
-Complications of Surgical/Medical Care	996-999	3	0.5	0.2	1.5
Total		35	7.0	4.9	10.1

*Only those diagnostic categories with at least one occurrence appear in this table.

**Standardized to age distribution of 2000 U.S. population.

Hanford Site 2009

OSHA Data

Appendix W. Age-Adjusted OSHA Illness and Injury Rates by Diagnostic Category*

Part 3. Men and Women

		Number of Diagnoses	Age-Adjusted Rate per 1,000**	Lower 95% Confidence Limit per 1,000	Upper 95% Confidence Limit per 1,000
Diagnostic Category	ICD-9-CM Code				
NERVOUS SYSTEM (NS) & SENSE ORGANS	320-389	6	0.4	0.2	0.9
-Disorders of Peripheral NS	350-359	3	0.2	0.1	0.7
-Disorders of Eye	360-379	3	0.2	0.0	0.6
SKIN AND SUBCUTANEOUS TISSUE	680-709	2	0.1	0.0	0.4
-Infections	680-686	1	0.1	0.0	0.4
-Other Inflammatory Conditions	690-698	1	0.0	0.0	0.3
MUSCULOSKELETAL & CONNECTIVE TISSUE	710-739	35	2.0	1.4	2.9
-Arthropathies	710-719	13	1.0	0.6	1.8
-Dorsopathies	720-724	12	0.6	0.3	1.1
-Rheumatism, Excluding Back	725-729	10	0.4	0.2	0.8
SYMPTOMS, SIGNS, & ILL-DEFINED CONDITIONS	780-799	1	0.1	0.0	0.4
-Symptoms	780-789	1	0.1	0.0	0.4
INJURY & POISONING	800-999	143	9.9	8.2	11.9
-Fracture - Upper Limb	810-819	17	1.3	0.8	2.3
-Fracture - Lower Limb	820-829	11	0.7	0.3	1.3
-Dislocation	830-839	2	0.1	0.0	0.4
-Sprains & Strains - Back	846-847	18	1.3	0.8	2.1
-Sprains & Strains - Other	840-845, 848	23	1.5	0.9	2.3
-Open Wound - Head, Neck, Trunk	870-879	11	0.8	0.4	1.4
-Open Wound - Upper Limb	880-887	20	1.5	0.9	2.4
-Superficial Injury	910-919	2	0.1	0.0	0.5
-Contusion	920-924	9	0.6	0.3	1.2
-Foreign Body Entering Orifice	930-939	4	0.4	0.1	1.0
-Burns	940-949	3	0.1	0.0	0.5
-Toxic Effects - Non-medicinal	980-989	4	0.3	0.1	0.8
-Complications of Surgical/Medical Care	996-999	19	1.3	0.8	2.1
Total		187	12.4	10.6	14.6

*Only those diagnostic categories with at least one occurrence appear in this table.

**Standardized to age distribution of 2000 U.S. population.