

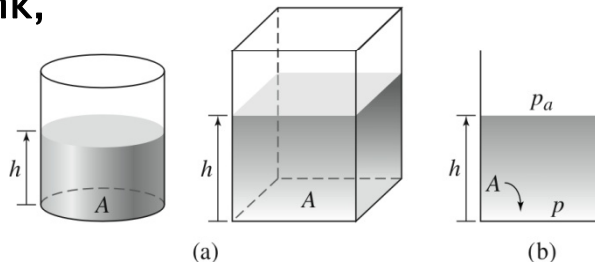
Fluid Systems I



Fluid Capacitance

$$C = \frac{\text{change in stored mass}}{\text{change pressure}} = \frac{dm}{dp}$$

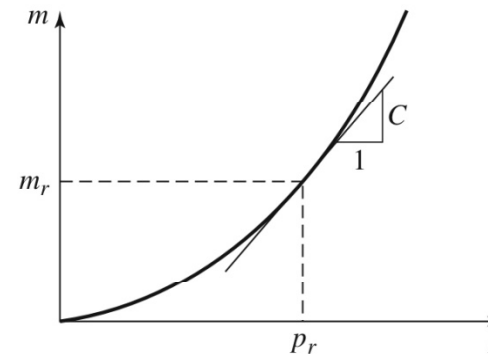
For a tank,



$$C = \rho A \frac{dh}{dp} = \rho A \frac{1}{\rho g} = \frac{A}{g}$$

$$\frac{dm}{dt} = C \frac{dp}{dt} = q_{mi} - q_{mo}$$

$$C \frac{dp}{dt} = \rho A \frac{dh}{dt} = q_{mi} - q_{mo}$$



General fluid capacitance

For liquid level system, C is defined as

$$C = \frac{\text{change in liquid stored } m^3}{\text{change in head } m} = \rho A$$

use h(pressure head) , instead of p.

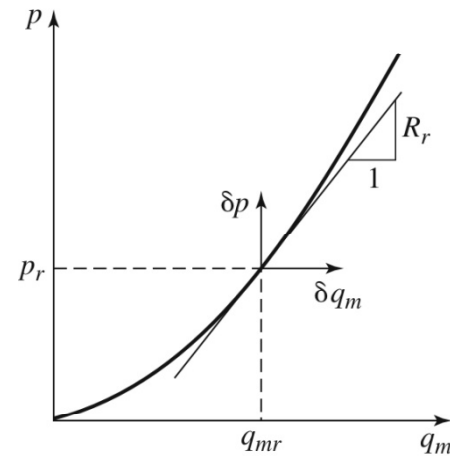


Fluid Resistance

$$R = \frac{\text{change in pressure}}{\text{change in flow rate}} = \left. \frac{dp}{dq_m} \right|_{q=q_{mr}}$$

$$q_m = \frac{p}{R} \quad \text{For laminar flow}$$

$$q_m = \sqrt{\frac{p}{R_l}} \quad \text{For turbulent flow}$$

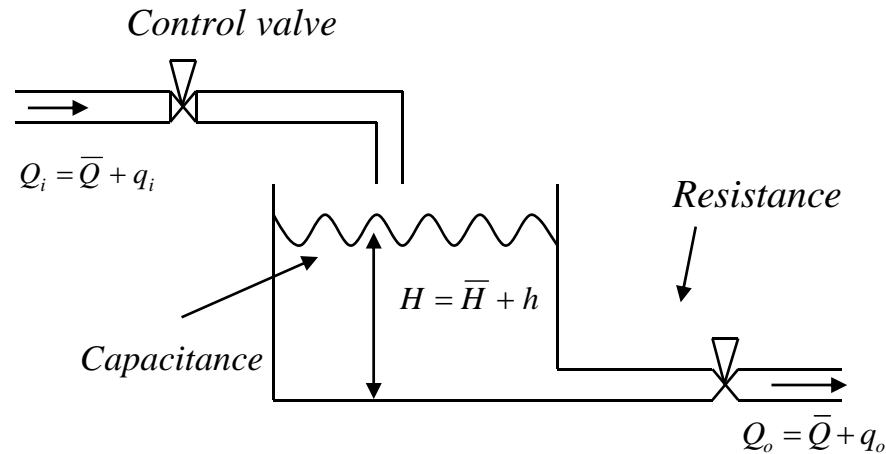


For liquid level system, C is defined as

$$R = \frac{\text{change in level difference}}{\text{change in flow rate}} \frac{m}{m^3 / s} = \frac{dh}{dq_m}$$



Liquid Level Systems



$$R = \frac{\text{change in level difference}}{\text{change in flow rate}} \frac{m}{m^3 / s}$$

$$C = \frac{\text{change in liquid stored } m^3}{\text{change in head}} \frac{m^3}{m}$$

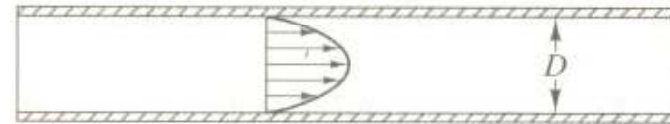
$$\text{Steady state : } Q_i = \bar{Q} = Q_o = \frac{\bar{H}}{R}$$

$$\text{consider, } Q_o = \frac{H}{R}, \quad Q_i - Q_o = C \frac{dH}{dt}$$

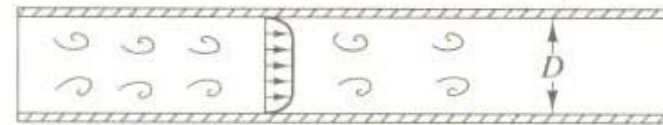


Basic Concepts

Laminar flow : When the viscous forces are dominant (slow flow, low Re) they are sufficient enough to keep all the fluid particles in line, then the flow is laminar.



Turbulent flow : It can be interpreted that when the inertial forces dominate over the viscous forces (when the fluid is flowing faster and Re is larger) then the flow is turbulent.



Reynolds number (Re) : The ratio of inertial forces to viscous forces.

It is used to determine whether a flow will be laminar or turbulent.

$$Re = \frac{\rho v D}{\mu}$$

μ : the dynamic viscosity of the fluid

ρ : density of the fluid

D : diameter

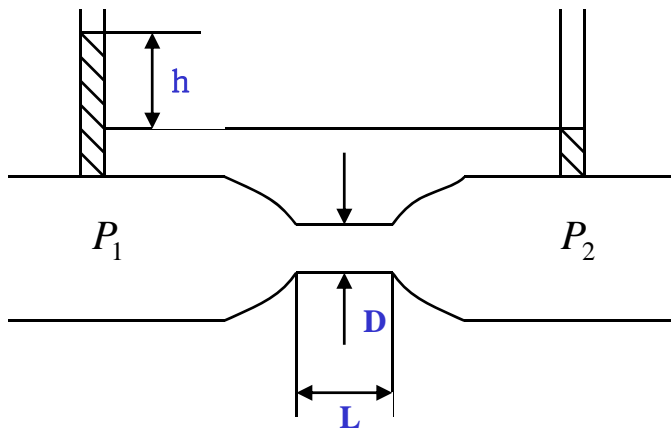
$Re < 2000$: always laminar

$Re > 4000$: always turbulent



Laminar Flow

Cylindrical pipe



$$P_1 - P_2 = \rho g h, \quad Q \frac{128 \nu L}{g \pi D^4} = h$$

ν : viscosity,

L : length of pipe

D : diameter of pipe

$$Q = \frac{h}{R} = K_l h, \quad R = \frac{128 \nu L}{g \pi D^4} \quad [s / m^2]$$

Q : steady – state flow rate

K_l : constant

h : steady – state head



Laminar Flow

Liquid level dynamics :

$$C \frac{dH}{dt} = Q_i - Q_o$$
$$= \bar{Q} + q_i - (\bar{Q} + q_o) = q_i - q_o$$

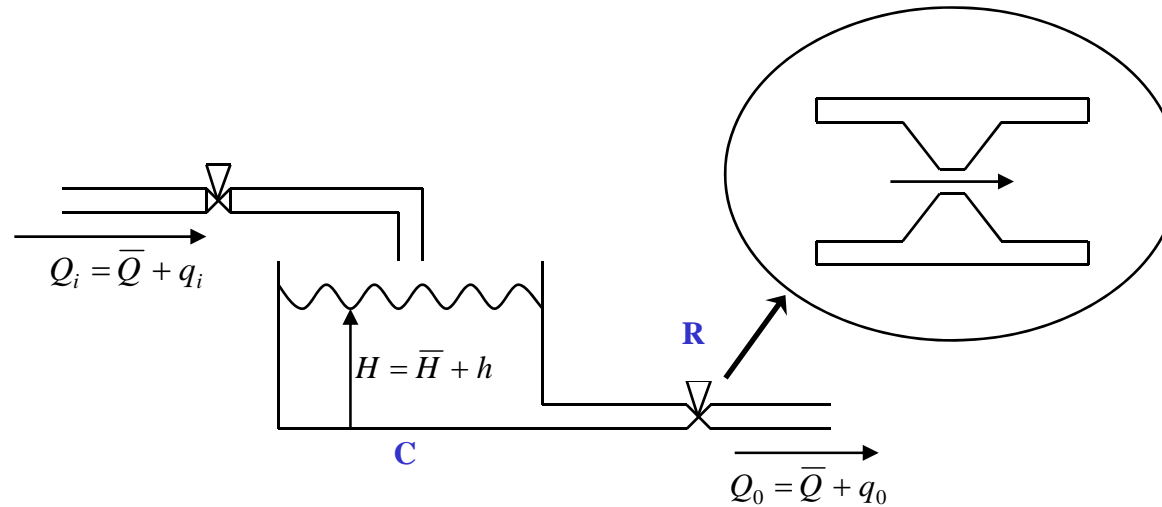
$$\frac{dH}{dt} = \frac{d}{dt}(\bar{H} + h) = \frac{dh}{dt}$$

$$Q_o = \bar{Q} + q_o = \frac{\bar{H} + h}{R}, \quad q_o = \frac{h}{R}$$

$$\rightarrow \frac{dh}{dt} = -\frac{1}{CR}h + \frac{1}{C}q_i$$



Turbulent Flow



$$Q = C_d \cdot a \cdot \sqrt{\frac{2}{\rho}(P_1 - P_2)}$$

ρ : density, a : area, C_d : discharge coefficient

$$\text{steady state: } Q_i = \bar{Q} = Q_o = K_t \sqrt{\bar{H}}$$



Turbulent Flow

Liquid level dynamics

$$C \frac{dH}{dt} = Q_i - Q_o = \bar{Q} + q_i - K\sqrt{H}$$

$$\frac{dH}{dt} = \frac{1}{C} Q_i - \frac{1}{C} K\sqrt{H} = f(Q_i, H)$$

$$f(Q_i, H) = f(\bar{Q}_i, \bar{H}) + \left. \frac{\partial f}{\partial Q_i} \right|_{\bar{Q}, \bar{H}} (Q_i - \bar{Q}) + \frac{1}{2!} \frac{\partial^2 f}{\partial Q_i^2} (Q_i - \bar{Q})^2 + \dots$$

$$\dots + \left. \frac{\partial f}{\partial H} \right|_{\bar{Q}, \bar{H}} (H - \bar{H}) + \frac{1}{2!} \frac{\partial^2 f}{\partial H^2} (H - \bar{H})^2 + \dots$$

$$= \frac{1}{C} \bar{Q} - \frac{1}{C} K\sqrt{\bar{H}} + \left(\frac{1}{C} q_i - \frac{K}{C \cdot 2\sqrt{\bar{H}}} h \right) + \text{high order term}$$



Turbulent Flow

$$\frac{dH}{dt} = \frac{d\bar{H}}{dt} + \frac{dh}{dt}$$

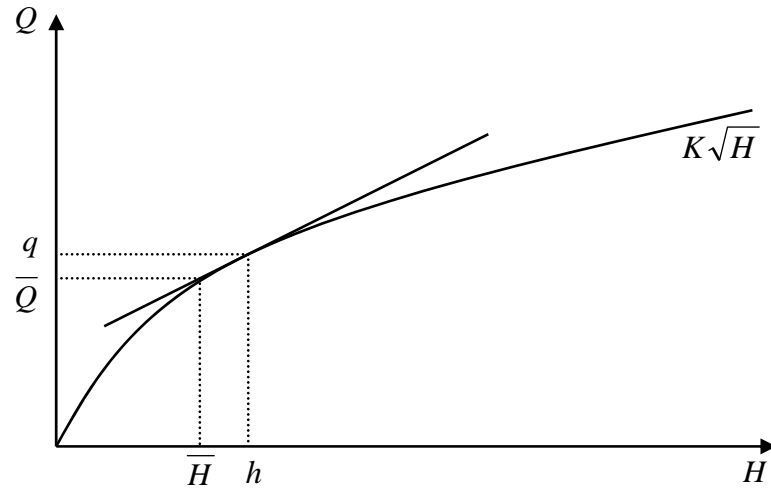
$$\Rightarrow \frac{dh}{dt} = \frac{1}{C} q_i - \frac{K}{C \cdot 2\sqrt{\bar{H}}} h$$

$$q_o = \frac{h}{R}, \quad R = \frac{2\sqrt{\bar{H}}}{K} = \frac{2\bar{H}}{\bar{Q}}, \quad \left(\bar{Q} = K\sqrt{\bar{H}} \right)$$

$$\therefore \begin{cases} \frac{dh}{dt} = -\frac{1}{CR} h + \frac{1}{C} q_i \\ q_o = \frac{h}{R} \end{cases} \quad \text{for small } q_i$$



Linearization



$$Q = \bar{Q} + q = K\sqrt{\bar{H}} + () \cdot h$$

$$y = f(x), \quad \bar{y} = f(\bar{x}), \quad x = \bar{x} + \Delta x$$

$$y = f(\bar{x}) + \left. \frac{\partial f}{\partial x} \right|_{\bar{x}} \cdot \Delta x + \frac{1}{2!} \left. \frac{\partial^2 f}{\partial x^2} \right|_{\bar{x}} \cdot \Delta x^2 + \dots$$

$$\approx \bar{y} + \left. \frac{\partial f}{\partial x} \right|_{\bar{x}} \cdot \Delta x$$

$$y - \bar{y} = \left. \frac{\partial f}{\partial x} \right|_{\bar{x}} (x - \bar{x}) = K(x - \bar{x})$$

$$y = f(x_1, x_2) \approx f(\bar{x}_1, \bar{x}_2) + \left. \frac{\partial f}{\partial x_1} \right|_{\bar{x}_1, \bar{x}_2} (x_1 - \bar{x}_1) + \left. \frac{\partial f}{\partial x_2} \right|_{\bar{x}_1, \bar{x}_2} (x_2 - \bar{x}_2)$$

$$= \bar{y} + K_1(x_1 - \bar{x}_1) + K_2(x_2 - \bar{x}_2)$$

$$\therefore y - \bar{y} = K_1(x_1 - \bar{x}_1) + K_2(x_2 - \bar{x}_2)$$



Summary of Liquid Level Systems

Laminar flow

$$\frac{dh}{dt} = -\frac{1}{CR}h + \frac{1}{C}q_i$$

$$\bar{Q} = K \cdot \bar{H} \quad R = \frac{\bar{H}}{\bar{Q}}$$

$$R = \frac{128\nu L}{g\pi D^4}$$

$$q_o = \frac{h}{R}$$

Turbulent flow

$$\frac{dh}{dt} = -\frac{1}{CR}h + \frac{1}{C}q_i$$

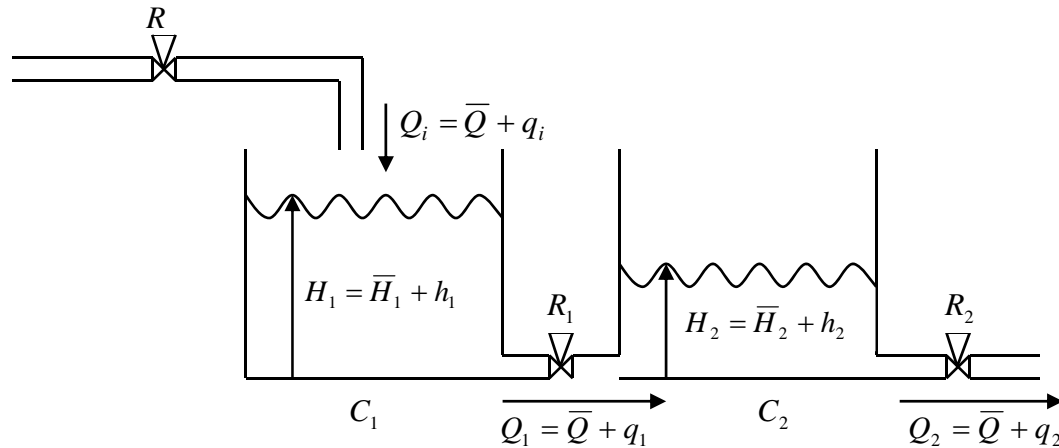
$$q_o = \frac{h}{R}$$

$$R = \frac{2\bar{H}}{\bar{Q}} = \frac{2\sqrt{\bar{H}}}{K} = \frac{2\sqrt{\bar{H}}}{C_d a \sqrt{2g}}$$

$$\left(\because \bar{Q} = K\sqrt{\bar{H}} = C_d a \sqrt{\frac{2}{\rho} \rho g \bar{H}} = C_d a \sqrt{2g} \sqrt{\bar{H}} \right)$$



Liquid Level Systems with Interaction



Steady state :

$$Q_i = \bar{Q} = Q_1 = Q_2$$

$$= \frac{\bar{H}_1 - \bar{H}_2}{R_1} = \frac{\bar{H}_2}{R_2}$$

Liquid level dynamics :

$$C_1 \frac{dH_1}{dt} = \bar{Q} + q_i - (\bar{Q} + q_1) \rightarrow C_1 \frac{dh_1}{dt} = q_i - q_1$$

$$Q_1 = \bar{Q} + q_1 = \frac{1}{R_1} (\bar{H}_1 + h_1 - (\bar{H}_2 + h_2)) \rightarrow q_1 = \frac{h_1 - h_2}{R_1}$$

$$C_2 \frac{dH_2}{dt} = \bar{Q} + q_1 - (\bar{Q} + q_2) \rightarrow C_2 \frac{dh_2}{dt} = q_1 - q_2$$

$$Q_2 = \bar{Q} + q_2 = \frac{\bar{H}_2 + h_2}{R_2} \rightarrow q_2 = \frac{h_2}{R_2}$$



Liquid Level Systems with Interaction

$$\therefore \begin{cases} \frac{dh_1}{dt} = -\frac{1}{C_1} \left(\frac{h_1 - h_2}{R_1} \right) + \frac{1}{C_1} q_i \\ \frac{dh_2}{dt} = \frac{1}{C_2} \left(\frac{h_1 - h_2}{R_1} \right) - \frac{1}{C_2} \frac{h_2}{R_2} \end{cases}$$

$$\text{Transfer Function} = \frac{Q_2(S)}{Q_i(S)} = \frac{1}{R_1 C_1 R_2 C_2 S^2 + (R_1 C_1 + R_2 C_2 + R_2 C_1) S + 1}$$

