

In the Cloud or On the Ground?

Different Strokes for Different Folks

By

Jesse Glasgow

and

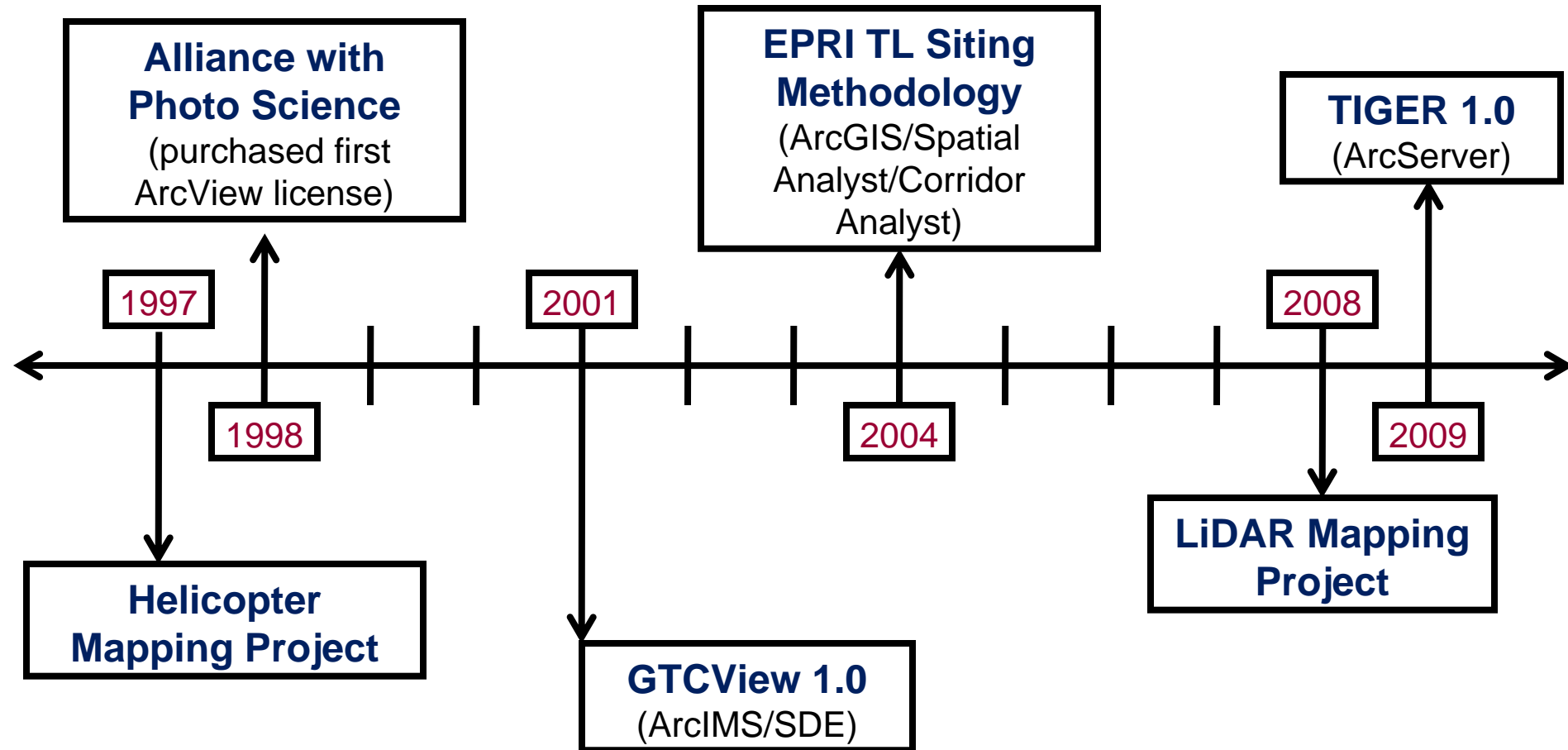
Mike Fourman

Georgia Transmission Corporation

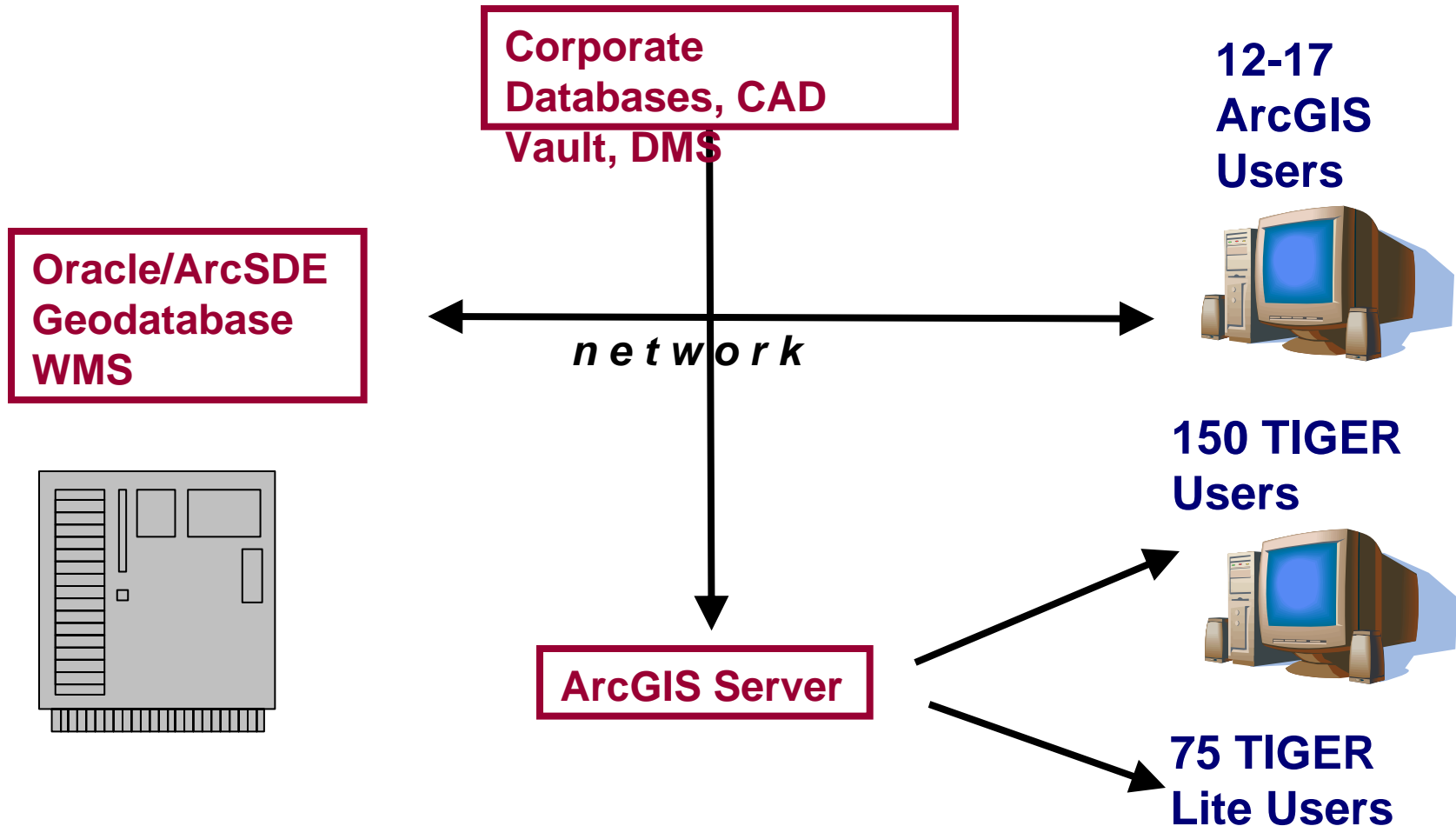
- Not-for-profit cooperative
- Owned by 39 electric membership cooperatives
- Serves 73% of the area of Georgia
- 3072 miles of Transmission Lines
- 644 Substations



GTC GIS History



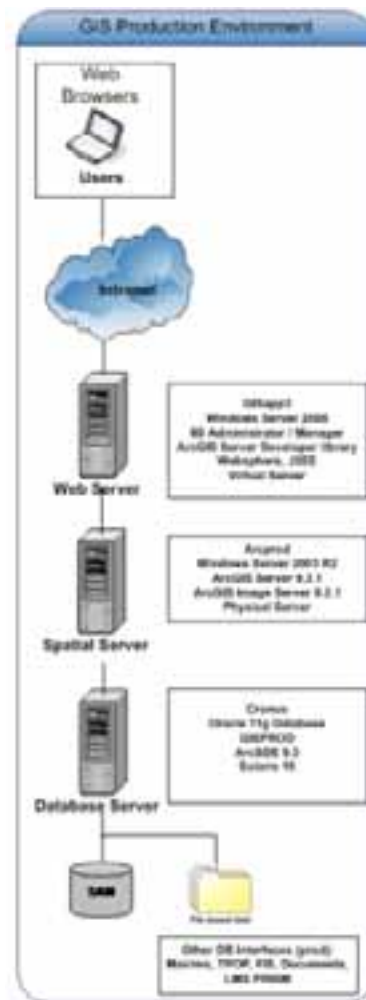
GIS Infrastructure



TIGER

Transmission Integrated Geospatial Enterprise Resource

- Intranet/Web browser
- 150 Trained Users
- > 1 TB of Data
- > 100 Map Layers
- Linked to 3 Enterprise Databases
- Linked to CAD Vault



TIGER

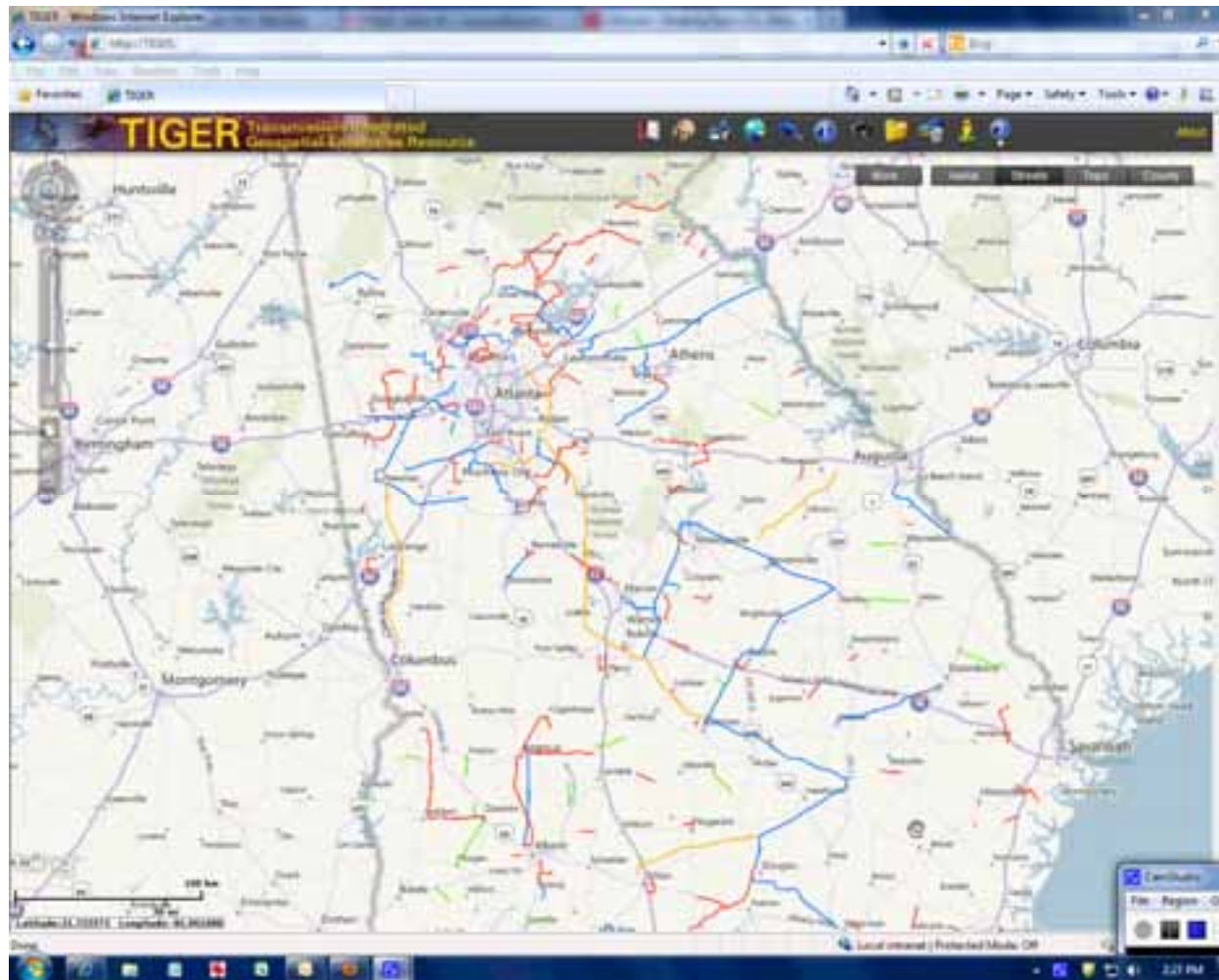


Photo Science

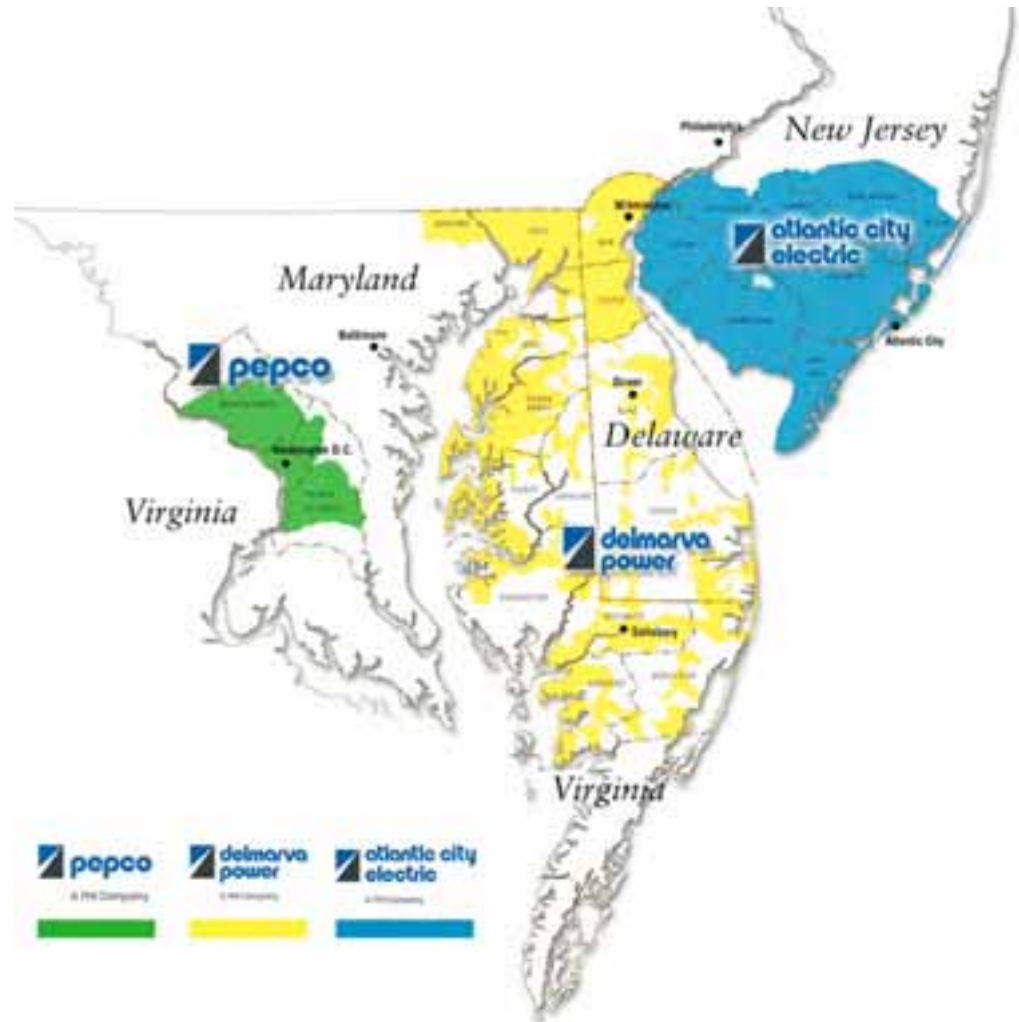
- 200 Employees: Photogrammetrists, Engineers, Surveyors, Developers & Geographers
- Remote Sensing , Aerial Photography, Photogrammetry, LiDAR, Survey
- Siting Analysis, GIS Data Acquisition, Cartography
- Viewshed Analysis and Photo Simulations
- Software Development
- GIS Implementation Services
- **GSaaS** (Geospatial Software as a Service)
- Full Service Geospatial Solutions

Photo Science Office Locations



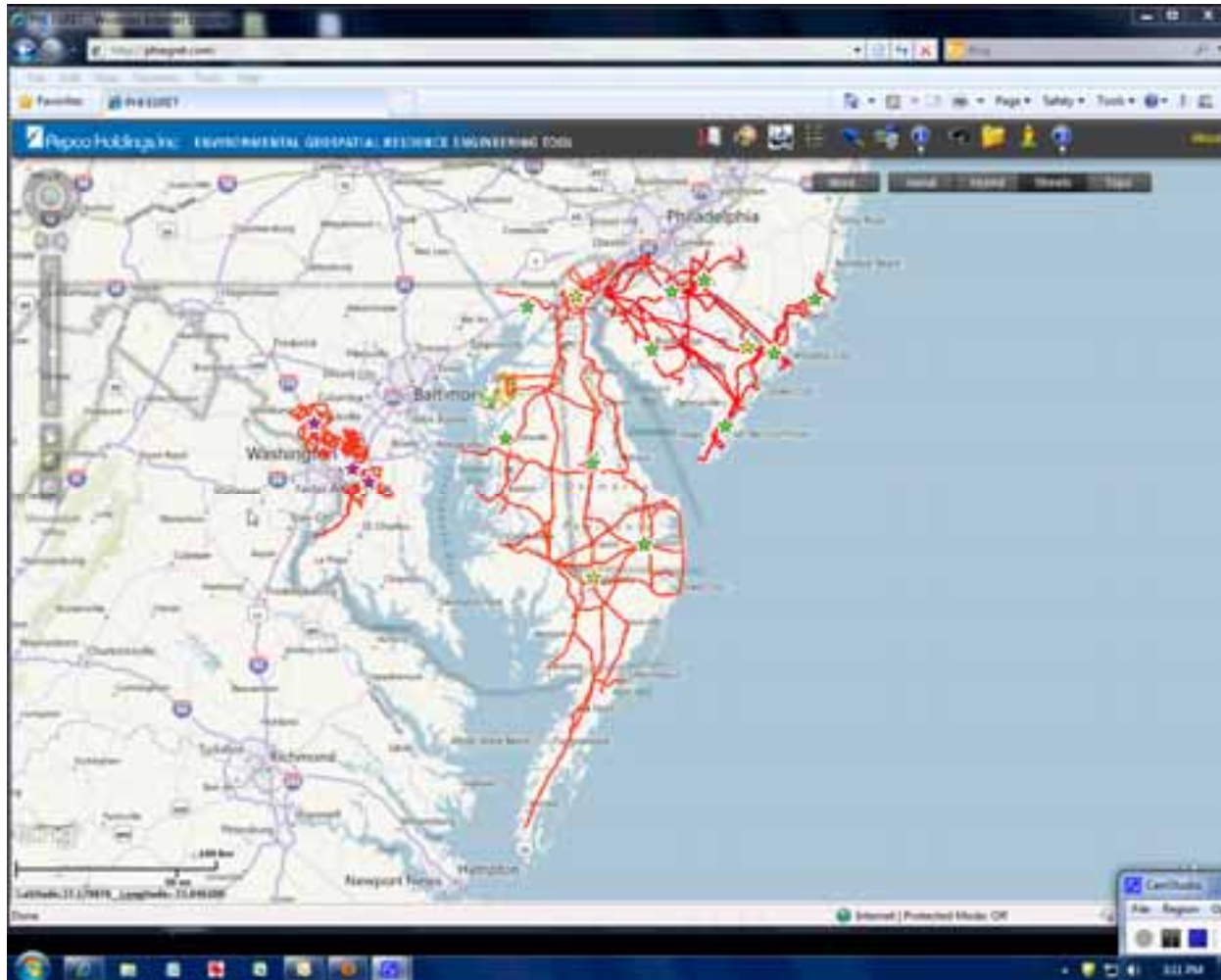
Pepco Holdings, Inc.

- One of the largest energy delivery companies in the mid-Atlantic region
- Serving about 1.9 million customers in Delaware, the District of Columbia, Maryland and New Jersey.



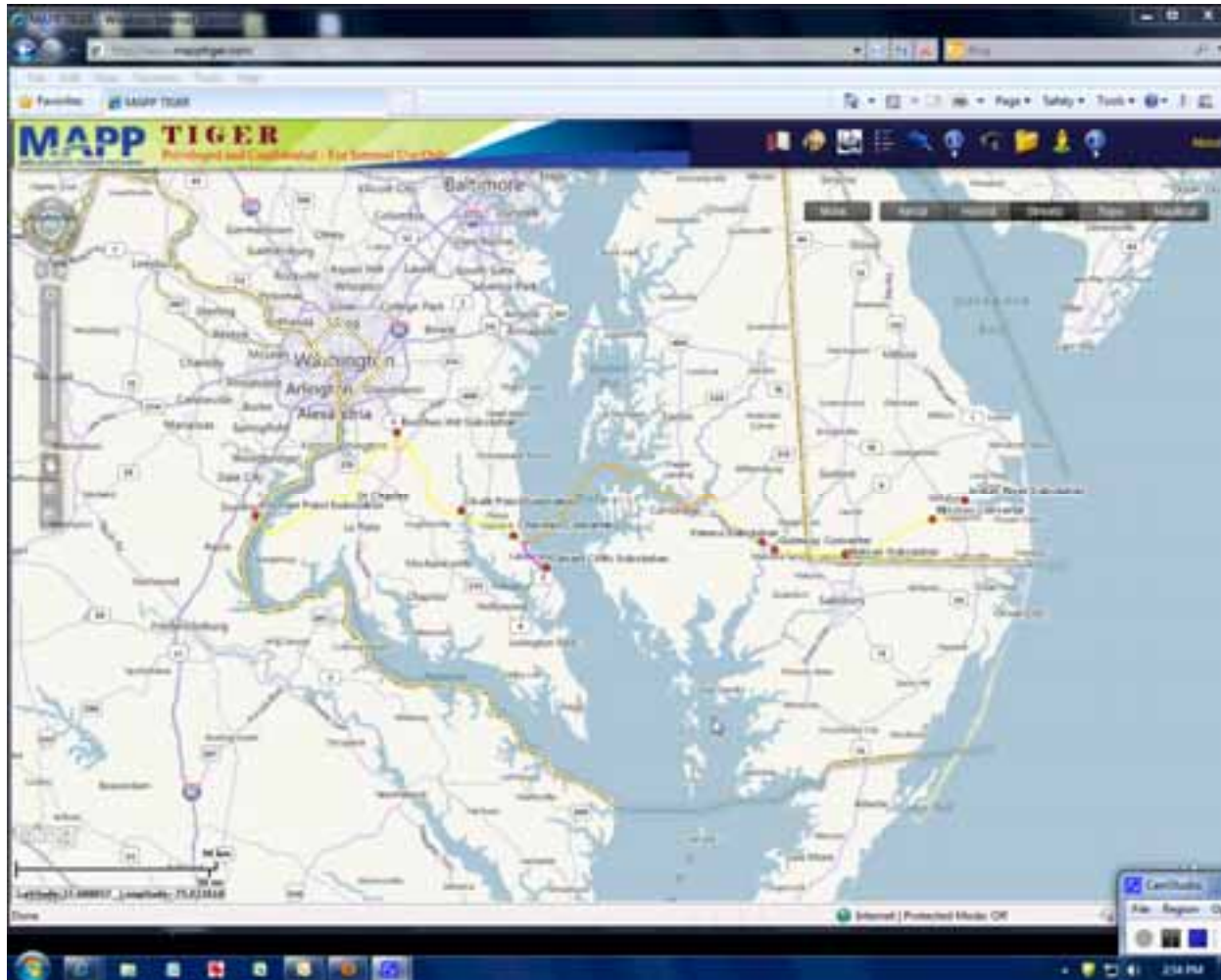
www.PHI EGRET.com

Environmental Geospatial Resource & Engineering Tool

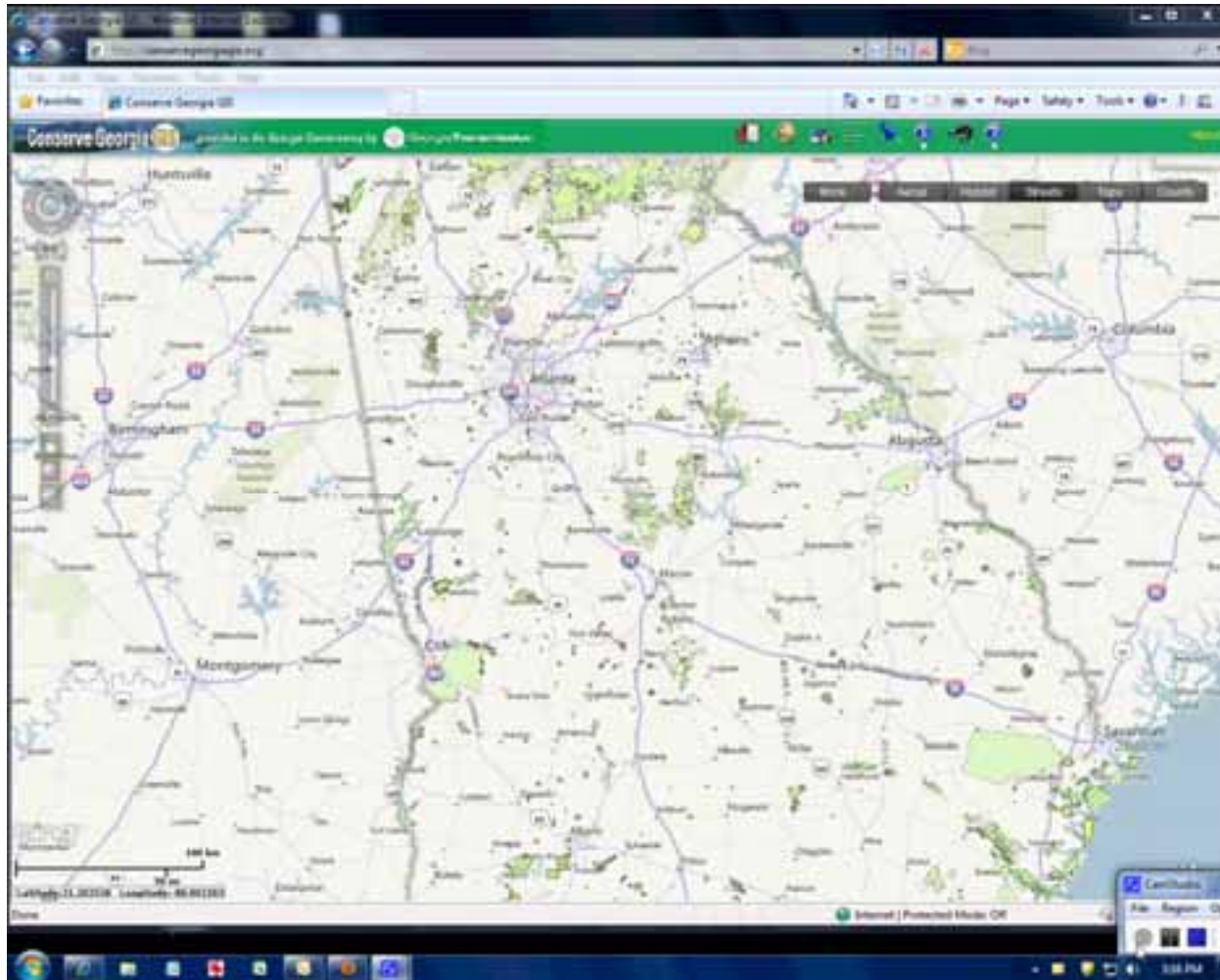


www.MAPP TIGER.com

Mid-Atlantic Power Pathway TIGER



www.ConserveGeorgiaGIS.org



Cloud vs. Ground

Ground	Cloud		
Traditional IT	Infrastructure as a Service IaaS	Platform as a Service PaaS	Software as a Service SaaS
Application	Application	Application	Application
Data	Data	Data	Data
Runtime	Runtime	Runtime	Runtime
Middleware	Middleware	Middleware	Middleware
Operating System	Operating System	Operating System	Operating System
Virtualization	Virtualization	Virtualization	Virtualization
Servers	Servers	Servers	Servers
Storage	Storage	Storage	Storage
Network	Network	Network	Network

Cloud vs. Ground

	Cloud	Ground
Performance	★ ★ ★ ★	★ ★ ★ ★ ★
Functionality	★ ★ ★ ★ ★	★ ★ ★ ★ ★
Integration	★ ★ ★ ★	★ ★ ★ ★ ★
Security	★ ★ ★ ★	★ ★ ★ ★ ★
Reliability	★ ★ ★ ★ ★	★ ★ ★ ★ ★
Scalability	★ ★ ★ ★ ★	★ ★ ★ ★
Support	★ ★ ★ ★ ★	★ ★ ★ ★
Cost	\$\$	\$\$\$\$

Questions?

Jesse Glasgow

JGlasgow@photoscience.com

770-270-7769

Michael Fourman

Michael.Fourman@gatrans.com

770-270-7782