



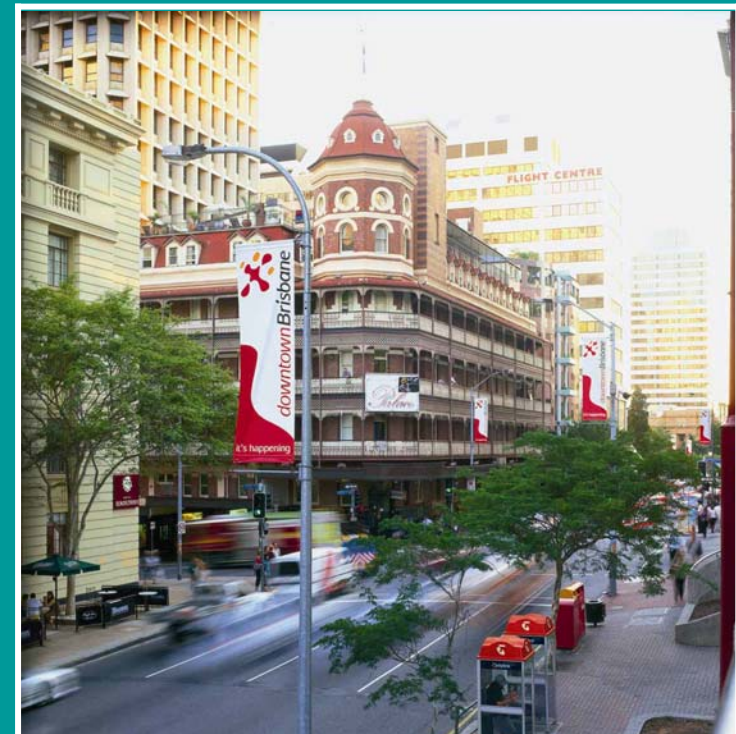
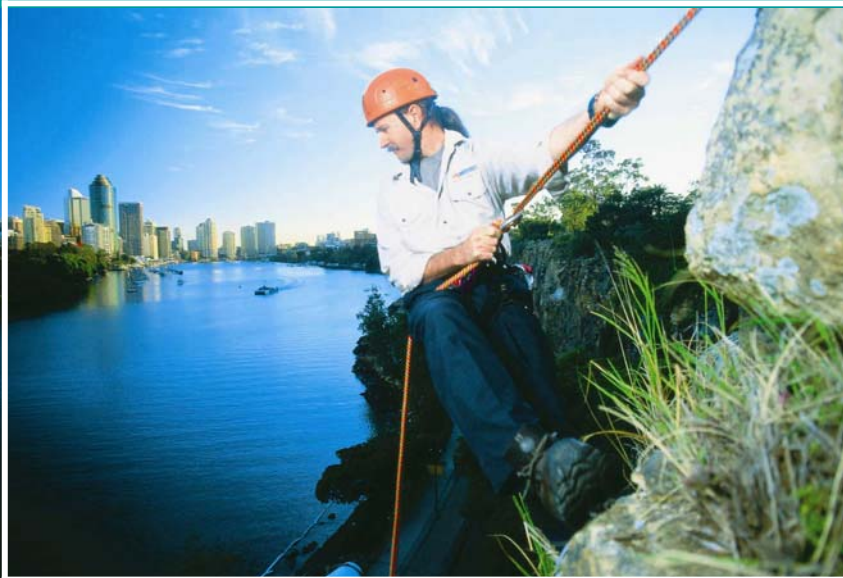
Library

Judy Stokker

Queensland university of Technology
29th annual IATUL Conference

eResearch:
Access and Support to
University Researchers

29th annual IATUL Conference



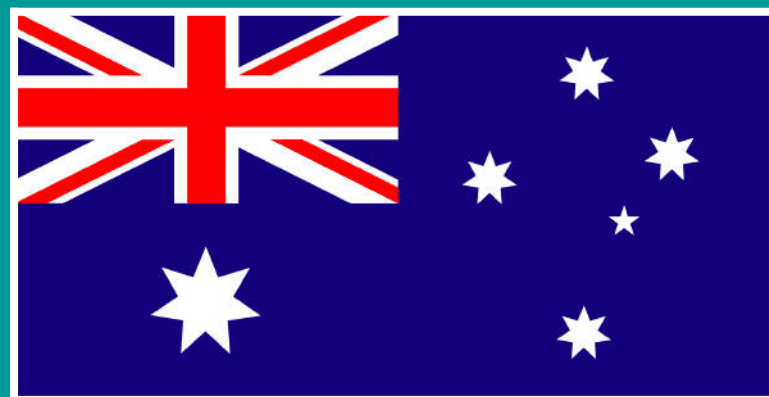
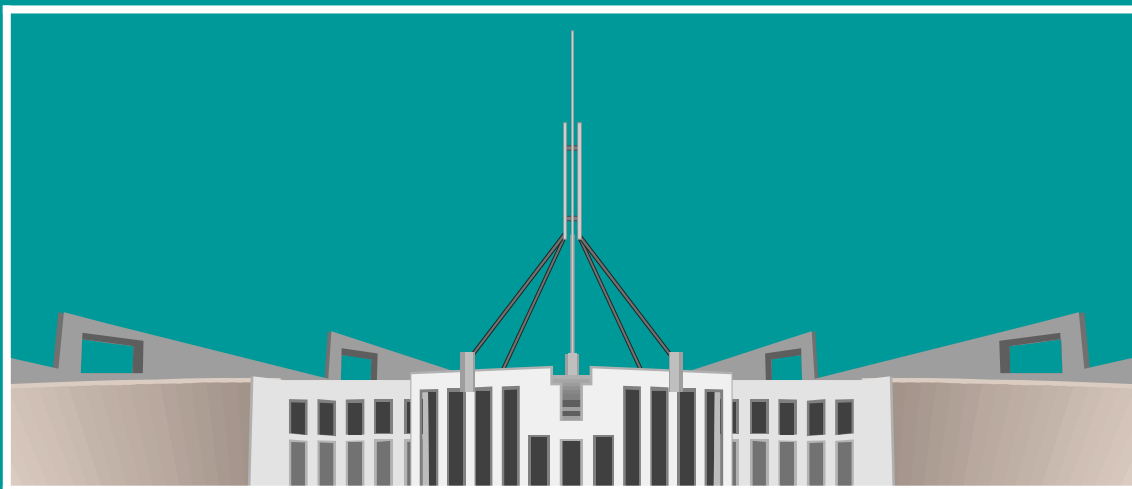
Source: www.dwarbi.com





Australian Government

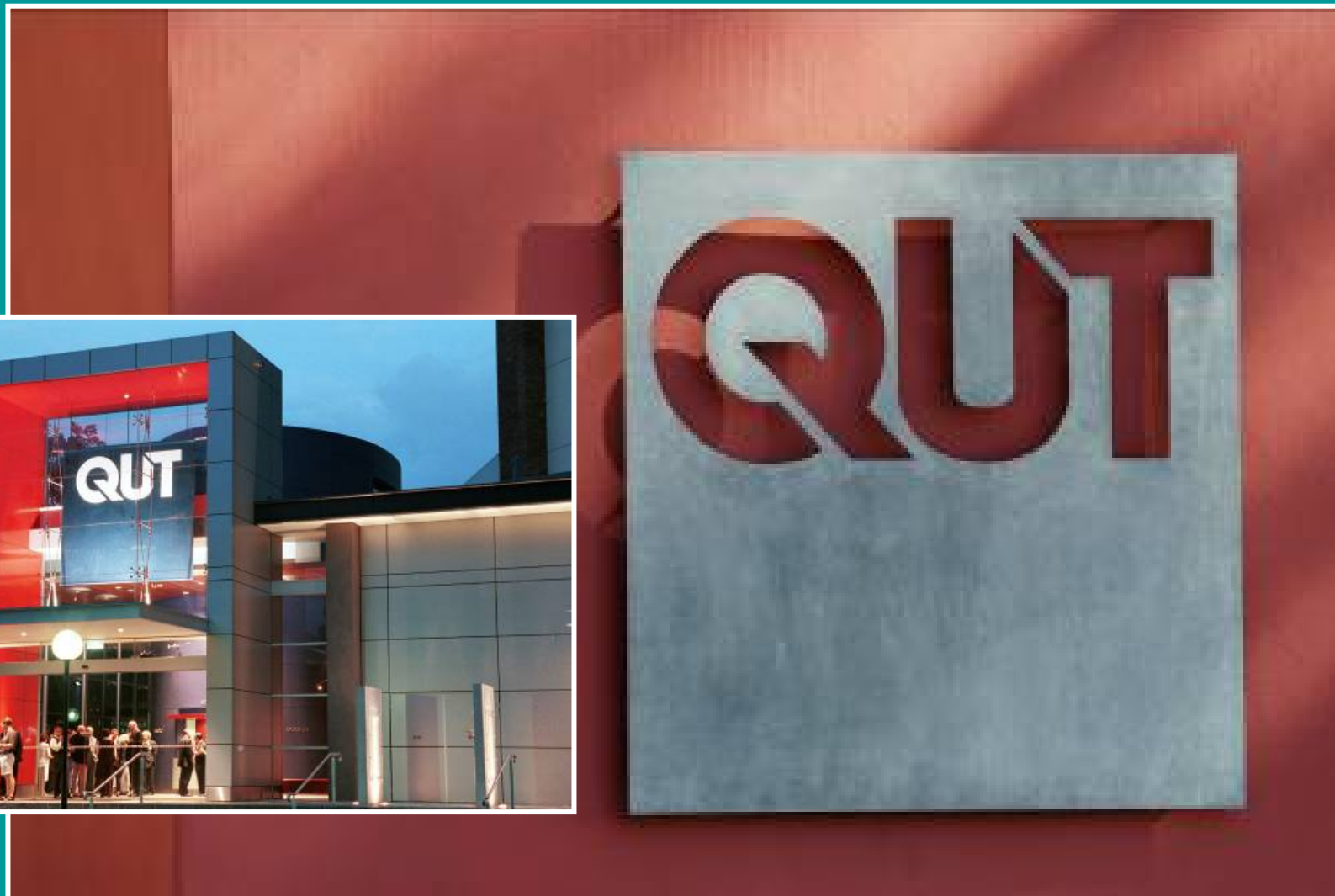
Department of Education, Employment and Workplace Relations



“Australian Code for the Responsible Conduct of Research”

*“Each institution must have a policy on the retention of materials and research data”
(Section 2.1)*

http://www.nhmrc.gov.au/publications/synopses/r39syn_summary.htm



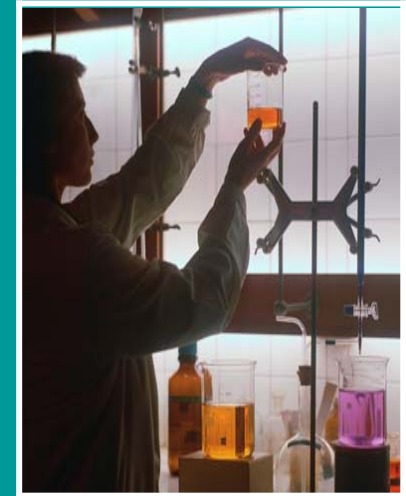
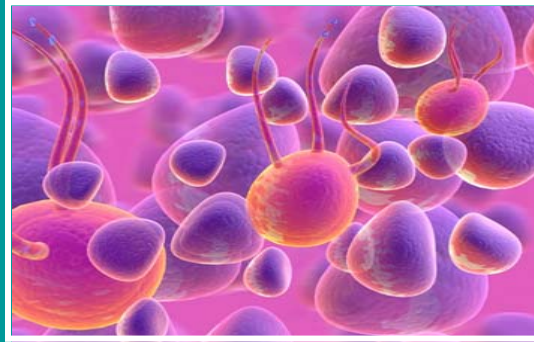
Survey of Research Data Management Practices at QUT

- Storage of digital data (where, type of data, volume)
- Use of a formal research Data Management Plan
- Current data storage/back up methods
- Access, ownership and responsibility of maintenance of research data
- Interest in training related to data management issues



Survey Results

- 76% reporting using USB/flash drives as an option for storing research data
- 50% reported using CDs as an option
- 41% reported using DVDs to store data
- 84% of QUT researchers do not have a Data Management Plan





Survey Responses

"I realise I don't really know what I'm doing because this survey has raised a lot of questions that I hadn't thought about. I would certainly get a lot out of training. I'm guessing the situation would be similar for most students"

Survey Responses

“The amount of video data that we generate in our research will become increasingly problematic to store using current methods as I anticipate we will produce significantly more than 0.5TB a year of raw video through staff and postgraduate student projects.....”



Survey Responses

The university is considering a central data repository, but this is only useful if the data placed there is well organised and is accompanied by metadata which includes the (instrumental) conditions under which it was obtained. For example, spectral or diffraction data tends to be specific to the instrument it was measured on.





Strategies

New roles for the Library

New Service models

Planning



e Research Access Coordinator

Investigate and develop systems for the organisation
and **curation of research datasets**

Coordinating Library support for QUT's researchers by promotion
of publishing through **open access** journals

Set up and promotion of **QUT's ePrints** – digital repository
for QUTs research publications

Provide leadership to the University in issues relating to **research support**

QUTePrints

Open-access archive of QUT research literature

Information & Help

[Contacts & Support](#)
[FAQ](#)
[Publisher Policies](#)
[Deposit guide](#)
[QUT eprint policy](#)

Deposit ePrints

[\(QUT only\)](#)
[Register](#)
[Deposit items](#)



Find ePrints

[Browse QUT ePrints:](#)
[By subject](#)
[By year](#)
[By person](#)

Quick Search

(Title, Abstract, Keywords)

[Advanced search](#)

Access Statistics:

[By Author](#) | [Top 50 authors](#) | [Top 50 papers](#)

Search across multiple eprint archives





IHBI Information Manager

(Institute of Health and Biomedical Innovation)

From traditional reference to value-added information services

Assist with building the collaborative culture

Recording and disseminating of tacit knowledge

Collaborative virtual spaces

Building web based research knowledge database

Complements the subject specialist librarians
– adds a top level research specialist support



A Model for Innovation

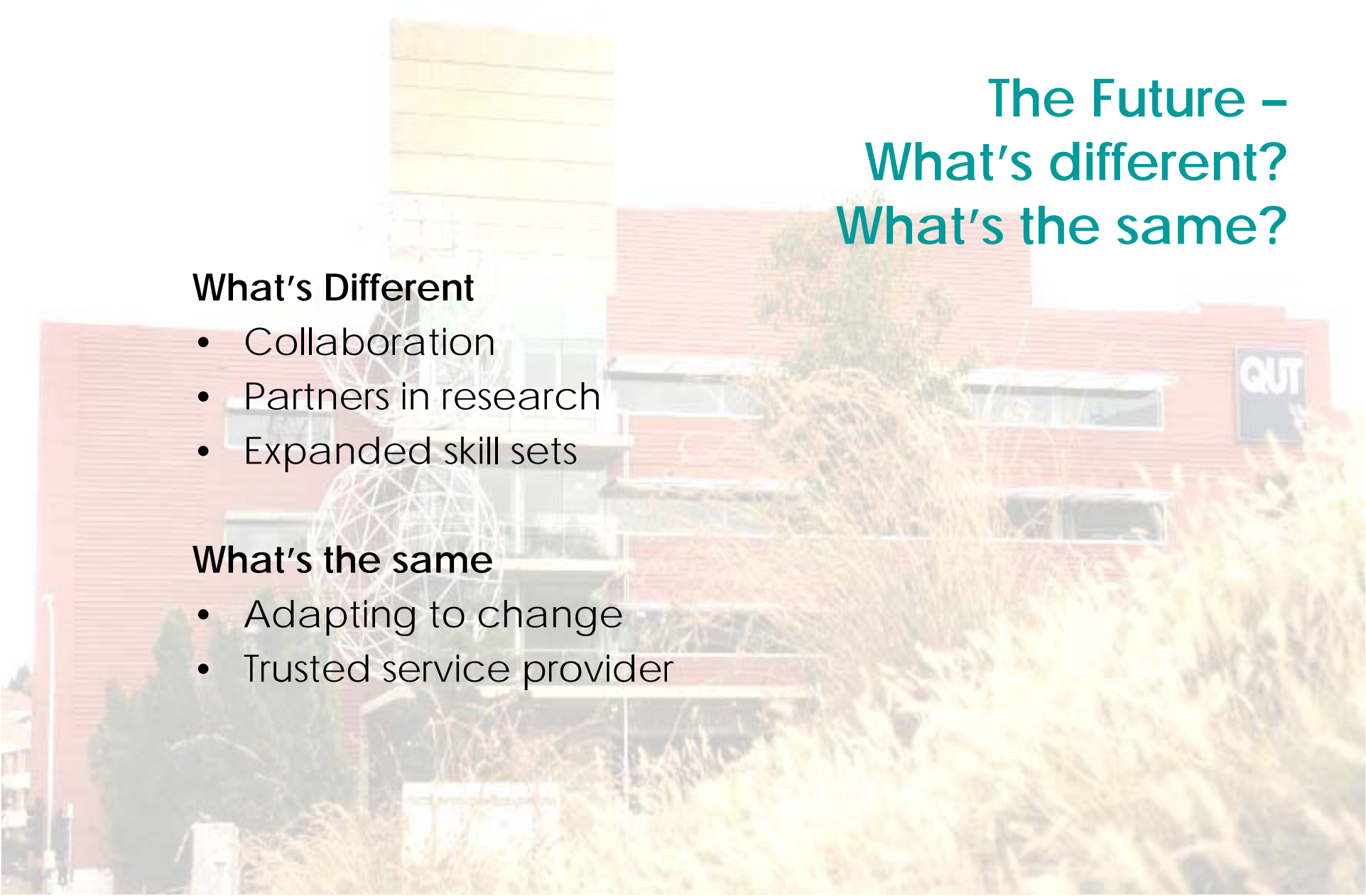


Specialist roles	Strategic planning	Ongoing roles
Targeted high Impact	Wider impact	Ongoing business – all relevant stakeholders
High risk - untested	Considered risk	Low risk
Key individuals – specially recruited	Some specialist but a wider group	All relevant staff
New skill set	New business	Training all relevant staff
Special funding	Planning for funding	Ongoing funding
Awareness raising – general communication to staff	Change Management	Inclusion of new roles in position descriptions



Research Support Plan

- Collaboration
- Participation in University eResearch forums and initiatives
- Liaison Librarians – specialisation
- Divisional Research Support Committee
- eResearch Support Team
- Data management
- Training needs of staff
- Training needs of researchers



The Future – What's different? What's the same?

What's Different

- Collaboration
- Partners in research
- Expanded skill sets

What's the same

- Adapting to change
- Trusted service provider

Thank you

questions | discussion

29th annual IATUL Conference

© QUT Library | judy stokker: 2008

CRICOS No: 00213J